

FALL CONFERENCE OF STATE PARK SUPERINTENDENTS

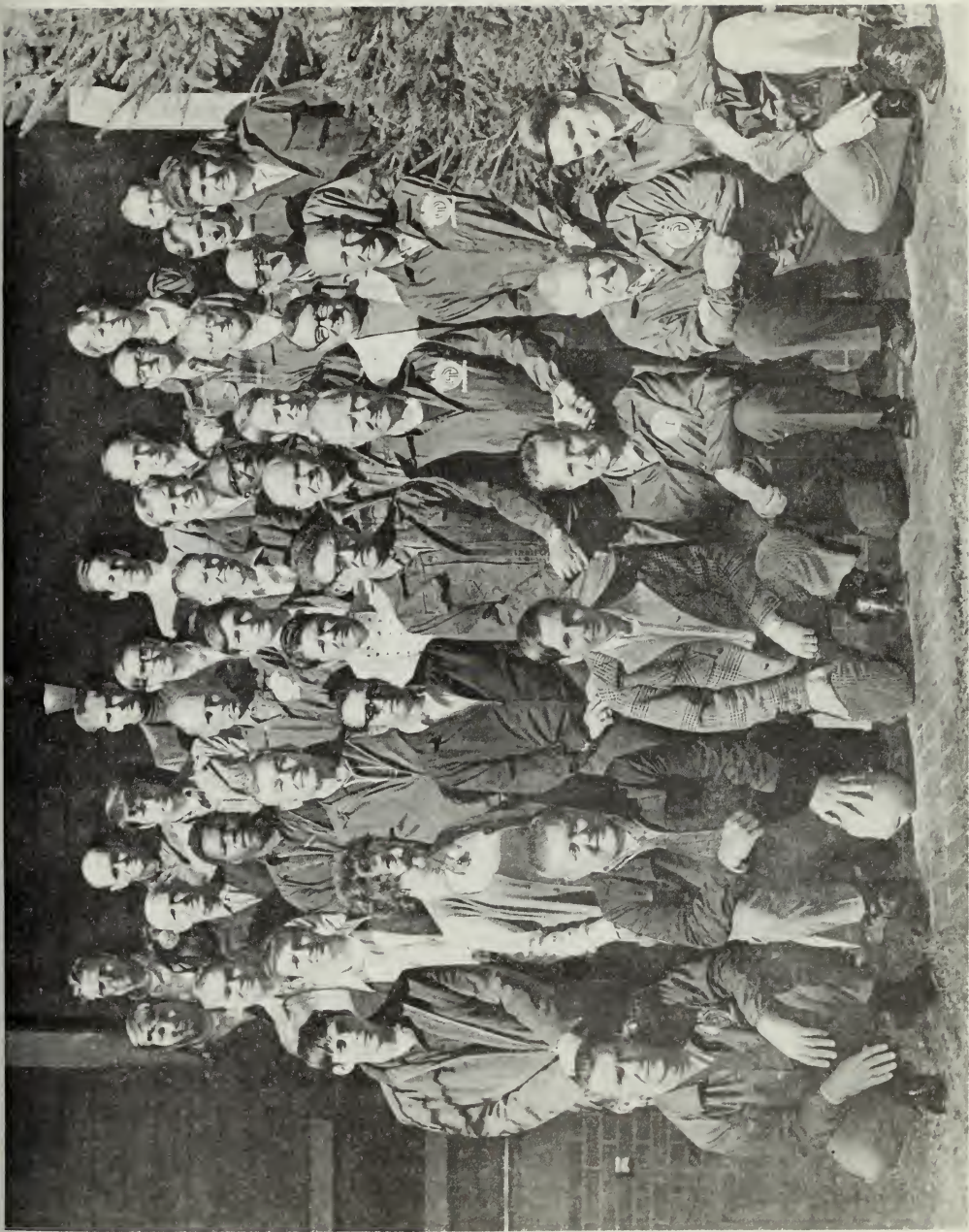
November 12-16, 1973

Oconee State Park


Walhalla, South Carolina



'Parks are for people'



1973 FALL CONFERENCE OF STATE PARK SUPERINTENDENTS — NOVEMBER 12-16, 1973 — OCONEE STATE PARK



Digitized by the Internet Archive
in 2012 with funding from
LYRASIS Members and Sloan Foundation

<http://archive.org/details/fallconferenceof00walha>

FALL CONFERENCE OF STATE PARK SUPERINTENDENTS

November 12 - 16, 1973
OCONEE STATE PARK

Monday, November 12, 1973

10:00 AM - 12:00 PM	Arrival and check-in
12:00 PM - 1:00 PM	Lunch at Lodge
1:00 PM - 1:30 PM	Opening Remarks - Ray Sisk Introduction of new superintendents by district superintendents
1:30 PM - 2:45 PM	District I Report Park Reports - District I Moderator - Norman Cooler
2:45 PM - 3:00 PM	Coffee Break
3:00 PM - 5:00 PM	Defensive Driving
7:00 PM	Supper at Lodge

Tuesday, November 13, 1973

7:30 AM - 8:15 AM	Breakfast at Lodge
8:30 AM - 10:30 AM	Defensive Driving
10:30 AM - 11:00 AM	Coffee Break Group Photographs
11:00 AM - 12:30 PM	District II Report Park Reports - District II Moderator - Oscar Kolb
12:30 PM - 1:30 PM	Lunch at Lodge
1:30 PM - 3:00 PM	District III Report Park Reports - District III Moderator - Bob Jones
3:00 PM - 3:30 PM	Coffee Break
3:30 PM - 5:00 PM	Chain Saw Operation & Maintenance
7:00 PM - 8:00 PM	Supper at Lodge
8:00 PM	Film Presentation - Vandell Davis

Wednesday, November 14, 1973

7:30 AM - 8:15 AM	Breakfast at Lodge
8:30 AM - 10:00 AM	I & E Section presents: John Wrisley - "Why People Act The Way They Do And What To Do About It!"
10:00 AM - 10:15 AM	Coffee Break
10:15 AM - 11:00 AM	Nature Section Presents: John Connell - S. C. National Forests
11:00 AM - 11:30 AM	Presentation of Recreation Section:
11:30 AM - 12:30 PM	History Section Presents: James J. Anderson, Historian Kings Mountain National Military Park
12:30 PM - 1:30 PM	Lunch at Lodge
1:30 PM - 2:45 PM	Presentation of Operations Section
2:45 PM - 3:00 PM	Coffee Break
3:00 PM - 5:00 PM	Defensive Driving
7:00 PM - 8:00 PM	Supper at Lodge
8:00 PM	Slide Presentation by E & P Section Keowee-Toxaway Master Plan

Thursday, November 15, 1973

7:30 AM - 8:15 AM	Breakfast at Lodge
8:30 AM - 10:30 AM	Defensive Driving
10:30 AM - 10:45 AM	Coffee Break
10:45 AM - 11:30 AM	Presentation of E & P Section
11:30 AM	Board bus for Table Rock Lodge
12:45 PM	Lunch at Table Rock Lodge
1:30 PM - 5:00 PM	Tour of Table Rock State Park Treatment Plant Operation Tour of Keowee-Toxaway State Park Return to Oconee State Park
6:00 PM - 8:00 PM	Social Hour
8:00 PM	Banquet at Lodge

Friday, November 16, 1973

7:30 AM - 8:15 AM

Breakfast At Lodge

8:30 AM - 10:00 AM

Remarks by Directorate

10:00 AM - 10:15 AM

Coffee Break

10:15 AM - 12:00 PM

• Group Discussion

12:00 PM

Lunch at Lodge

AIKEN STATE PARK

I began work at Aiken in May and several of the major projects that had been completed prior to my arrival included completion of the carport at the superintendents residence, a new privy in the boy scout area and a new pump at the cabin area.

Once settled in our park the summer season began. All A-2 personnel had been hired and we were ready for a big summer. Red Cross swimming began the second week in June and there were four two-week sessions. The classes began at 8:00 a.m. and lasted until 10:00 a.m. with approximately forty persons attending each session. The instructors were the A-2 lifeguards who had their WSI badges and they certainly did an outstanding job.

There were many firsts at Aiken this summer. One first was a very unfortunate incident when a drowning took place. This was the first drowning in the swimming area, but not the first drowning on the park. Another first for the park was that we had two weddings. Both weddings were exceptionally pretty and both were held at Fishlake Shelter which added to the beauty of the ceremony.

The University of South Carolina Extension at Aiken held their annual affair at the park and built the worlds largest strawberry shortcake which was approximately sixty feet long. After accomplishing the feat, all eight hundred participants sat and listened to the sounds of two of the areas most popular rock bands.

We had at least a dozen family reunions and local mills to gather at the park for picnics in which the attendance was four to five hundred at each event. Several barbecues were held on the fourth of July and the food was delicious. Picnicking is one of the main attractions at the park.

Happy Days Camp, which is for the mentally retarded and the physically handicapped children, had their camp at the park for four two-week sessions. They enjoyed activities such as swimming, pedal boats, arts and crafts, volleyball, and softball. A section of the swimming area was roped off especially for this group. The children and leaders thoroughly enjoyed using the park and plan to have their camp here next year.

All the recreational facilities were heavily used throughout the summer. Several churches in the area formed softball teams and they played games at the park ballfield. This drew an enthusiastic crowd on Sunday afternoons.

The Boy Scouts held their Fall Jamboree in the Scout Area with approximately one hundred and fifty scouts in attendance. Another large group using the primitive area was the New Ellenton Riding Club with two hundred persons attending and one hundred and thirty horses. On Saturday night they presented a country music band and everyone had a wonderful time.

After a most enjoyable and rewarding summer our thoughts turn to the busy winter months ahead of us preparing for next summer. First on our list was obtaining bids for extending the chain link fence around the pedal boat area and tiling the floor and shower stalls in the bathhouses at the campground and replacing the Davis Dock on the river, since this is the most popular spot for night fishing. We will also remove the log wall at the concession stand and replace it with a rock wall and a flower bed. Plans include building a new reservoir at the cabin area, draining the swimming lake, cleaning it out and adding new sand and building a split rail fence at the park entrance.

The campground and concession stand bathhouses have been painted and plans include painting the superintendent's residence. We hope to complete all these things by next summer.

I feel the park could be improved by digging a twelve foot wide canal between the swimming lake and the small adjoining lake with a bridge and adjoining the sides of the canal with rock like the spillway at Fishlake Shelter. This would add to the beauty of this particular area and could increase our pedal boats from four to about eight and also increase our revenue. Another facility which I think would greatly improve the park is carpet golf. We have an excellent area for this and is centrally located near the swimming area and concession stand. One final improvement which so many campers have asked me about is some type of playground equipment in the camping area. Once the swimming area is closed there is not much of interest for the children who are camping.

Marshall West

ANDREW JACKSON STATE PARK

Andrew Jackson continues to expand and update its facilities thereby increasing our attendance and revenue. The big accomplishment during the past year was the completion and opening of our new family camping area, complete with dump station. The camping area has been well received by campers and we are looking forward to greater use in the coming year. Another welcome addition was the completion of new picnic area including a shelter and comfort station.

A total of five pieces of Timberform playground equipment have been erected in the camping and picnic areas. Also additional signs have been placed to direct park visitors to the new facilities.

A new park entrance gate has been erected and a new park entrance sign will be put up in the near future. The oil storage tank supplying the museum had to be replaced with a new five hundred gallon tank. At the same time new fuel supply lines were installed.

With the help of Mike Stevens and Ray Sigmon, an extensive remodeling and restoring job was undertaken in an old log cabin, which was moved to Andrew Jackson from the Wateree area. The job was completed and the cabin is now a useable building.

Lew Griffin

BAKER CREEK STATE PARK

Baker Creek and the newly developed Hamilton Branch are now a part of the Hickory Knob State Resort Park Complex.

Within the new complex system, Baker Creek shares a maintenance supervisor, water and sewage treatment plant operator and recreation director.

The recently opened Information Center serves as a nucleus for the three parks. The entrance road and parking area at the Center have been reconstructed to accommodate more vehicles. The Little River Bridge Boat Ramp area has also been enlarged to meet the demands of the relocated bait and tackle shop.

Baker Creek had a busy summer season. I would like to thank Mrs. Dot Fakkema for her help in planning the recreation programs. A weekly campfire program was held. The series of events for July 4th week included square dancing, water ski exhibitions, water safety and rescue squad demonstrations. The public seemed to enjoy the arts and crafts show held during Labor Day weekend.

Camping is still on the upswing. We have had several trailer clubs and scout troops this fall.

The winter work program includes winterizing the camping area comfort stations, general painting and repair work, cutting and underbrushing throughout the park.

We are looking forward to our continued growth and development.

Wayne Timms

BARNWELL STATE PARK

Barnwell received a lovely new walkway last spring and it has been the topic of many comments from visitors to the park.

Other projects include: installation of a new roof on Shelter #1 which makes it a more comfortable place to picnic.

With the help of Mr. L. R. Batten we found an old septic tank near the bathhouse. We had no idea it was there. Eventually the tank was dug up, cleared out, a new drain field laid and the tank put to use this summer. It worked fine.

We had several young men brought from town to assist us with our regular clean-up program. This program helped us as well as the young men in that it gave us helpers and also kept them off the streets.

We witnessed several unfortunate incidents this summer, one being a near drowning on July 29th. The quick reaction of the lifeguard staff saved the life of a young man who got into trouble. He was quickly taken from the lake and later pronounced A-OK by the attending doctor at the hospital. Also assisting in this incident was the Barnwell County Rescue Squad. The other incident took place when Ranger Zissette was cleaning the shop floor with gasoline. A fire started but we were able to put out the fire without any injuries and moderate damage to one corner of the shop building.

We hosted another successful and enjoyable Easter Seal Camp this year which would not have been so successful had it not been for the lovely assistance given by all persons who helped put this program over. I would like to give special thanks to Mr. Danny Turpin who advised as well as provided labor in getting us equipment and games, which were enjoyed by the young men and women as well as the adults.

On June 2nd a dance was sponsored by the Palmetto Squares. The camping area was filled beyond capacity. That afternoon an aquaduct was held in the lake followed by a covered dish supper. The dance lasted until around 11:30.

Several suggestions to improve our park would be the following;

1. Improve the condition of the water - many complaints come to us concerning this each summer. An inspection by a plant specialist will give up a lot of advice as to what can be done about the problem.

2. Extend the nature trail.

3. Professor James Ward from the University of South Carolina found an old well that runs all the time. It is located near the nature trail and from the looks of the site it used to be a home site.

4. Saving and marking plants along the nature trail would be an asset. A botanist from Columbia has found a rare fern near the bridge. It is believed to be the first found in South Carolina.

Best of luck to all state parks.

Bea Ross

CHARLES TOWNE LANDING

New construction at Charles Towne Landing includes the Geodesic Dome being used for Trade Shows, traveling exhibits, dances, conventions, and banquets. The restroom and the food concession areas have not been completed.

In the Crafts Area, a wood workers shop has been completed and placed in operation along with a saw pit and blacksmith's shop. In the Animal Forest, a snake house was put into operation showing poisonous indigenous snakes for educational purposes.

Other construction in the Animal Forest consists of a holding pen and maternity cage, the alligator habitat has been revamped, and we have begun construction on the turkey habitat.

In our winter painting program, we have completed painting the Geodesic Dome, the three barns, and the gate house. Painting has also been completed on the metal roofs of the residences.

Winter plans call for interior painting of all buildings along with renovations. The porch columns and repairs to shutters at the Warings have been completed. Major overhauling and maintenance has been initiated on the Adventure - caulking, replacing deteriorated beams, scraping of the entire vessel, and applications of new oil.

The Carolina Queens have been completely re-worked. They have come from a daily breakdown to an average of one every two weeks. New wheels and tires will be placed on the Queens over the winter. All equipment will be completely re-worked, cleaned, and painted as necessary. Our major maintenance problem of the past season was the rebuilding of our major 40 ton air handling unit which had to be removed and shipped to Columbia. The Grounds-Maintenance crew is well into the first major catch-up program on the ground and on the gardens

since the Landing opened.

The major damages we had were due to the heavy rain early in the season which resulted in the washing away of the Carolina Queens roadway across the causeway and the washing out of the dam between the bear and puma habitats. The area was rebuilt this fall and the trails are being rebuilt with the stabilization of soil mixture.

During this past year were several favorable events. To mention a few, we have had flower shows, musical festivals, "do-it-yourself" days for the children, Japanese Week, Lollipop Symphony Concert, Weight-Watchers Picnic, Sporting Day, National Dixie Youth, etc. The Landing has become a favorite spot for weddings. For this we have a wedding oak and an area set aside for receptions. We cater numerous picnics and banquets from our Snack Bar. The theater has been used for operas, plays, and film series. Now that we are in our winter season, we are catering to school groups from the three state area, averaging several hundred school children a day. The Landing offers animal and history seminars.

Our group of Animal Forest Volunteers, who are qualified personnel, conduct guided tours for school groups through the Animal Forest (usually done by appointment but are also available to school groups that drop in). During the week members of the Junior League offer the same type of program for the remaining area of the Landing to serve the needs of our educational responsibility. The Landing opens at 8:30 for school groups.

Many of the school groups take advantage of our school group lunches prepared by the Snack Bar. Over the past year, our Gift Shop has progressed to the selling of better merchandise so that a souvenir

purchased is more meaningful. Our craftsmen are offering their works for sale and perform demonstrations for groups. We will have a Crafts Fair in the Geodesic Dome the first week in December. At this time there are approximately 30 craftsmen for the fair.

The newly formed Charles Towne Players will be presenting the first of a series of 16th and 17th century plays Thanksgiving week. The first play is by Oliver Goldsmith, "She Stoops to Conquer." The members of the cast are from the local community.

The first presentation will be at the Northwoods Mall. The Landing will be planting a special Christmas Tree in conjunction with lighting of the large 30 footer. We are looking forward to needed expansion of our educational program entailing outdoor classroom opportunities to study nature, ecology, environment, history, and animal behavior. We are hoping to expand the use of our theater through additional film and drama series.

It is our desire to proceed with the completion of building the facilities at the Crafts Center incorporating a Petting Zoo of domestic animals into that area. This facility, upon completion, would be of great educational and human interest value. We are moving into a construction program in the Animal Forest during the winter months in which we plan to complete two maternity areas and two additional animal display habitats.

It is our intention to move forward as rapidly as possible during the winter months to have all existent facilities in top condition and the planned new facilities operational by April 1, 1974.

Janson Cox

CHERAW STATE PARK

We had a good summer at Cheraw State Park with only twelve water rescues. The lifeguards were very alert and did a great job. Swimming classes were very popular with the local people as we had a good turn out for the beginner's swimming classes. We had only a few taking senior lifesaving. Pedal boats were again very popular and with ten boats this year instead of five we had very good usage. Our recreational program went over big with the campers, with the hay rides being the most popular. The slide shows were very successful also.

Most of the credit has to go to our season recreator Buff Roberson. The archery range is growing in popularity as the archers increase each week. After we got Labor Day out of the way we then turned our attention to the winter work program. We have been concentrating mostly on our family cabin area and have put tile in one of the kitchens. We have several walls to replace and we have already replaced two. We have also replaced the porch on one cabin and have more to replace but are experiencing difficulty in getting the flooring. We have repainted the outside of the recreation building and repaired the front. We also painted the bathrooms and put new commodes in them.

The fox hunters recently built additional kennels and we have painted them. We hope to make even more progress on our work program now that the frost has killed the grass. The dry weather has been good for our work program but it starts a bad fire season. So far we have had no fires on the park but the fish hatchery had one. We have had good season use of our group camps and we still have one more group to go.

We were glad to get the heaters for the campground comfort station, and the campers sure appreciate them. Our geese are beginning to come in now and we have around two hundred on the lake as of now. We recently purchased fifty dollars worth of shelled corn and we are feeding them regularly. They are a big thrill to the park visitors.

Larry Adair

CHESTER STATE PARK

We have had a busy year; we wired and installed four electric heaters in the new camping area rest rooms, replaced fixtures in the old camping area rest rooms and painted them.

We built a 80' by 30' shelter at the Archery Range, rebuilt the road in the new camping area with the help of the County, put in 80 feet septic tank line in the new camping area, did a lot of work on the horse arena, installed 30 garbage can racks, rebuilt the Archery Range after it burned, painted all park signs, cut underbrush on the entrance road and several acres around the camping area.

We cleaned up behind more than 100,000 people and did lots of other jobs.

Clarence Doster

COLLETON STATE PARK

This report of activities covers the period of November 20, 1972 through November 12, 1973. There has been an increase in attendance and revenue during this period. Shelters and picnic areas were kept busy with family reunions and church parties, especially on weekends.

The Timberform playground equipment, spring board and basketball court were used a great deal. Plans for next season are to add horseshoes and badminton.

A few major projects were the roofing of the ranger's residence, pouring a cement floor in the garage and remodeling the bathroom (which was a contract job.)

New signs were erected that read Colleton State Park and should increase camping next season.

Minor maintenance included the cleaning and painting of gratings in the sewerage treatment plant, grills in the picnic and the camping areas and changing all the signs, food chests and camp site numbers to warm brown. Charlie Walters dug a drainage ditch on the hill above the treatment plant to prevent water from entering the plant and washing away the foundation. I would like to give my sincere thanks to the District Superintendent, the Central office staff, Supply Center and everyone connected with the parks for the help and support they have all given me.

Jim Stockman

CROFT STATE PARK

It's hard to believe that another year has passed so quickly but with all the activity at Croft State Park this past season we concede that it has passed indeed. We at Croft lived up to the slogan that says, "Parks are for People" and we would add three more words "the year round."

Returning from last year's Superintendent's conference with an ample supply of warm brown paint we quickly began to repaint all park signs, thus conforming to the new sign color code. Also all doors to comfort stations were painted and kick plates installed which add years of life to the much used doors. We put a new roof on our old comfort station and installed two wall heaters in this area. Campers have expressed their appreciation for the winterization program.

The family realized we had become quite proficient painters so they brought us inside during a rather cold period and we painted two bedrooms and a hallway at the superintendent's residence.

With the weather still a factor we began to repair our six pedal boats and place bumper pads at the boat house. Now it was time to concentrate on the new camping area. We cleared underbrush, filled in washed out roads and pads, made fire rings for each site and repaired food chests.

Perhaps the main attraction at Croft has been the fact that we have had nine recognized horse shows that started in early spring and have just been concluded for 1973. We have had monthly first Sunday shows by the Spartanburg Horseman's Association throughout the entire year, Attendance has been excellent and so good at times that other park personnel were called in to assist us. We are grateful to Mr. Bob

Jones, District III Superintendent, Mr. Fred Belk, Superintendent at Rose Hill, Mr. Edmond Brown, PMA at Kings Mountain and Mr. Robert Mitchell, Ranger at Table Rock, for their assistance.

Many plans and much construction was necessary for the above mentioned horse shows such as building additional jumps for the main show ring, two picket fences, four brush boxes and twenty-four natural wood poles, a coop and eight sets of standards were constructed. A shelter was necessary to store all of this equipment, so we then set about making a 12' by 28' storage shed. To correct a problem between spectators and animals a split rail fence was built to enclose the spectator area and thus alleviated the problems of safety.

Due to the fact that the horse shows go well into the early morning hours, four parking lot lights were installed by an electrical contractor with some assistance from us. Having some left over split rails we enclosed the old Barnett Cemetery.

We feel this will definitely help preserve this landmark.

Perhaps the most major construction done this year was the designing and building of an outside jump course for horse shows. The construction crew, headed by Mr. J. R. Altman, came to Croft the early part of June and cleared the area to be used. Ten jumps were built on this course which includes an Irish Bank, one of the few found in the entire southeast.

Landscaping was done by grading, disking, and seeding of fescue grass. The course has already been used for three shows. A site was chosen, cleared, and landscaped for the new ranger's trailer. Both front and back porches were built for this trailer. This also necessitated laying of a water line, septic tank, and drain field. A sideporch on the superintendent's residence was enclosed to find

more living space.

The wooden main gate was removed and a metal one replaces it now. Also metal garbage can racks were erected throughout the park. This has certainly aided us in saving time and has contributed greatly to a cleaner park for us. Two basketball goals were put up also.

A nature trail has just been made by the Palmetto Area Council of the Boy Scouts of America during their annual fall campout at Croft. Approximately 375 Boy Scouts took part in this project. Additions to this nature trail will be forthcoming.

The Senior Citizens observed their special week at Croft and various church groups held week long day camps. Bethel Methodist Church provided Chapel services each Sunday morning throughout the summer. The three picnic shelters received heavy use and the accommodations have been extended with the two daily use periods of each shelter. Reserved group camping sites were used only three times.

Another first at Croft State Park was the recently held Enduro sponsored by the Palmetto Trailriders Association. There were 400 motorcyclists entered in the Enduro. Needless to say not everyone finished. A good point to make is that no injuries were sustained except minor ones. All reports indicate their delight and gratitude to the Parks Division for allowing them the use of Croft State Park.

The pine beetles have done great damage to our pine trees but the salvage program supervised by Mr. Pete Spearman, S. C. Forestry Commission seems to be going smoothly. Improvements that have been made at Croft in the past two years now require additional personnel so that they can be properly maintained.

During the improvement period we had assistance from the Neighborhood Youth Corp that provided about ten young boys for mainly summer work and three full-time helpers. This enabled us to make necessary and desired improvements, however, this program no longer exists. To maintain the present facilities I feel it is imperative that Croft State Park be given immediate consideration for additional personnel.

We need more recreation equipment and designated areas for general recreation use. A recreational area that would include softball, baseball, soccer, football, basketball, and also shuffleboard is much desired by local people using the park. There is also a need for putt-putt golf, driving range (since there is not a public driving range in the Spartanburg area), horseshoes, volleyball, etc. With the vast acreage we must cover by vehicle it would be great to have a second truck for our park, most especially if additional personnel are assigned to Croft so as to reduce use of one's personal car.

In wrapping up another year I would conclude with a poem that I think sums up my thoughts quite well.

I am only one
But still I am one.
I cannot do everything
But still I can do something;
Because I cannot do everything
I will not refuse to do the something
that I can do.

Ray Hayes

EDISTO BEACH STATE PARK

In the past year at Edisto Beach, the park has seen many changes. When I arrived at Edisto on December 15 of last year, the construction crew was hard at work hauling fill dirt from the back of the park to increase the size of the campground by filling the marsh in.

This continued until early May. The hauling was carried on after April, when the construction crew left, by a private hauler. The plan is to run a road around the outside of the marsh to make a one way circle through the park. Truck loads of granite have been hauled in to be placed on the outside of the fill to prevent wash-outs. Hopefully, this project will be finished by next season.

Other improvements in the campground include the installation of a lift station, septic tank, and a drain field to handle the first restrooms which were not used until this past season because of problems with the Health Department. With those problems cleared up, and the installation of the above items, the restroom was opened for Easter. This facility has helped in a big way in handling the large numbers of campers discovering Edisto Beach this year. Also, campsite markers have been installed temporarily to help keep track of who is who in the campground. After completion of the campground project, new permanent markers will be installed. Small pea gravel was put around the restrooms to help in keeping sand out.

The coming of the new year found the park staff busy completing the winter work program. A lot of work was done to the cabins. All the interiors were painted and three of the cabins bathrooms were painted. Also sink and toilets were installed to replace old fixtures.

Two cabins had new fiberglass shower stalls installed also. In my opinion, the greatest improvement in the inside appearance of the cabins was the replacing of the old bamboo shades with new curtains. The old well house in the cabin area was remodeled and converted into a linen and supply room for the cabins. In February the snow storm hit Edisto. There were four inches of snow on the beach and up to six inches back off the beach. This was the worst storm to hit Edisto in 100 years according to local residents. The damage to the trees and area in the park took six weeks to clean up. In the ranger's residence, we remodeled the kitchen, painted the entire inside, and re-screened the side porch.

A drive-thru shed was built onto the rear of the shop to store equipment. Peg board was employed in the organization of the tools in the shop.

In the day use area, improvements included the placing of grills and garbage racks. The grills were used extensively during the summer and proved to be useful additions to the area.

The garbage racks have helped greatly in controlling the amount of litter on the ground in the picnic area. Fifty five-gallon drums were placed on the beach to provide a place close at hand for beach litter. Picnic tables were assembled and placed in the picnic area to aid in the shortage of tables there. The carpet golf was painted and new vapor lights were installed, attracting more visitors to take advantage of the facility.

With the help of the construction crew, the entrance to the park was landscaped, improving the looks 100%. The one major improvement to the day use area was the completion of the Contact Station at the entrance. The building will serve as an office for the park and as an information center for the campers and visitors to the park.

As the summer season drew near, the two small restrooms near the bathhouse were given a new coat of paint. A new drain field was installed at the bathhouse to handle the large crowds. The old one was insufficient to take care of the people who visited the park.

The summer season began with a large number of campers and great numbers of day users. The carpet golf had a good season with its new colors and lights attracting large numbers of visitors at night. The Fourth of July was the high point of the season with an estimated 13,000 people using the park on that day.

The campers have continued to come to the beach in large numbers every week-end since Labor Day. All in all, Edisto Beach has had a landmark season. A year in which it was discovered by many new visitors and re-discovered by many old visitors.

Cliff Brady

DREHER ISLAND STATE PARK

Since the conference at Oconee State Park last November, quite a bit of construction has taken place.

The parking lots have been cleared and graded, ready for hard surfacing when the utility lines have been put in (water and sewage) hopefully this fall.

As of this date two boat launching ramps 30 ft. wide have been constructed and a 75 foot pier with a floating dock has been installed. The bridge between the second and third island has been constructed and a canal dug which will enable boat traffic to use it year round.

The parking area has drain basins and pipes installed to carry away any water that should fall. The culverts have been built with masonry rock which is very eye catching.

Dreher Island is a very popular place for fishermen from all over South Carolina and as all the facilities that we have and are planned it will be second to none shortly.

Wallace Brock

GIVHANS FERRY STATE PARK

This has been a very successful year, but more important I am happy to report is was a safe one. We had no drownings and the most serious accident reported was a young lady with a splinter in her foot. The Boy Scouts suffered a mishap; however I will cover that later.

Our winter work program went over without any problems that we could help. Due to the lack of funds the chain-link fence along the river bank was held up, and I was unsuccessful in getting the park roads paved for the same reason. The other projects in our program were painting all park signs and the gate warm brown, rebuilding the foot bridge between cabins one and two, replacing damaged screens, gutters, and windows in all four cabins. The rotten floor was also repaired in the bedroom of cabin #2. The Superintendent's residence was painted and gutters were installed over the back door. The last of our projects was the painting of picnic shelter #1, the food chests, and the grills in the picnic and camping areas.

During the summer months we placed the "Kiddie Farm Tractor" in the playground complete with a trailing sand box and installed a volleyball net and a basketball goal. As always the weather had a definite effect on outdoor activities, and this was a year of severe weather.

When we moved here last November this area had not had any rain for almost six weeks, and the Edisto River resembled a wide, shallow creek (about three feet below normal). The drought subsided during the last week of November, and the trend was reversed through

the following nine months.

December was wet and cold; however, the following two months were even more severe. January brought us freezing rain and a record snow fall. However we were lucky and the park sustained no damage from any of these storms. The twelve inches of snow caused quite a bit of excitement and a few problems. Sunday night's 9⁰ temperature gave us a scare, but everything was secure, and we came out in good shape.

February was very cold, but not so wet and there was little activity on the park. Thank heavens for those heated cabins, because it was during this cold weather that we pulled maintenance on them.

March, April and May were cool, windy, and wet; however it was May that gave us a hard time. The last week in the month brought severe thunder storms, and a tornado that ripped through the middle of our picnic area. We sustained a lot of damage to the trees. However, no damage was done to any of the park buildings. A five inch tree was uprooted in our back yard, and fell across the power line, and came to rest on top of the house. No damage was done to the residence, but the power was off for some time.

The swimming and picnic areas were hardest hit, and it appeared that an airplane had skipped through the tops of the trees on it's way to a crash landing. With GOD'S help and hard work we were able to get most of this damage cleaned in time for our June first opening.

The months of June, July and August were also wet, but very hot and unsettled. The entire park crew spent the first day of June getting the swimming area marked and roped off with three hundred feet of ½ inch nylon rope. The rope was held in place by six five-gallon oil cans. Each can was anchored by five concrete blocks, and

fifteen feet of cow chain. When the area had been secured we added four more oil cans (not anchored to the bottom) and thirty foam rubber floats to make sure the rope was buoyant enough to hold up a tired swimmer.

The next ten days were very successful; however mother nature gave us fourteen inches of rain in less than 48 hours, and the river rose five feet from 6 p.m. Monday until 6 a.m. Tuesday. This turned out to be just the beginning, and before it crested the Edisto River rose more than twelve feet. The water came within two inches of the all time high water mark. (An iron spike that Supt. William Wiggins' father drove in a giant live oak in the spring of 1928). In the interest of safety the swimming area was closed and not reopened until the 7th of July. It was during the time that the swimming area was closed that my lifeguards did not cooperate with our work program; consequently I fired one and the other two quit because I would not let them both off to go water skiing on Saturday, the 7th of July, the day we reopened the swimming area. I was able to replace two of them, but was unsuccessful in finding a third one; consequently I shared lifeguard duty on Saturdays and Sundays for the remainder of the season. Thanks to GOD we had no drownings, however many children and adults also were pulled from the swift waters of the Edisto River. This was due largely to the high water which covered the wall at the swimming area. There was a five foot drop off and although it was clearly marked with 100 feet of $\frac{1}{2}$ inch nylon rope and eight five-gallon marker buoys there were those who ignored this safety precaution and stepped off over their heads; consequently there were three of us constantly on duty from 10 a.,. until 7 p.m. on Saturday and Sunday. Labor Day finally arrived and at 7 p.m. we closed the swimming area with no drownings or serious accidents.

I would like to take this opportunity to commend lifeguards Allen Melcher, John Jones and park aid Vernon Jones for the good job they did. I would like to thank Ranger Charles Cumbee for the fine job he did patrolling and maintaining the park on weekends while I was on duty at the swimming area. We had a few special events and the first one was a Boy Scout Camporee made up of 500 live Scouts. Except for one incident the weekend went very smoothly. It seems that four scouts from one troop had smuggled a Bayer aspirin tablet bottle full of M-80 firecracker powder into the park, and about midnight they decided to stick a match to the powder and watch it spew; however they got a tremendous explosion instead. The boys were rushed to a Charleston hospital where glass was removed from all four. It turned out not to be serious, but very painful. We found out the next day that they had done this once before, and the powder reacted as they had planned. However, this time one of the boys had carried the bottle in his pocket for several days, and this caused the powder to become packed in the bottle; consequently it exploded.

In March we had the Girl Scouts for a two day Camporee and it was very successful with no explosions.

The final event was the 4th of July celebration and the park was over run with visitors. The camping area had a couple of spaces open, but the picnic areas were overflowing with people. The highlight of the day was a sky diving exhibition. Three jumpers from the Charleston Parachute Club made a very successful jump, and landed within ten feet of their target, which was a cloth X in the middle of the largest playfield. In summation, we had a very good year. Our camping area did not do as well as we had wished; however this was largely due to the unusual amount of heavy rains and hoards of mosquitoes that plagued

us most of the summer. The gasoline shortage did not help either.

At this time we are thirty cabins ahead of last year, and I think this is due to the fact that more people are finding out we are here.

We are looking forward to next year and hopefully it will be as safe and even more successful than the one we have just completed. In closing I would like to thank all of those responsible for the repair work done to the swimming area after the water receded. Charlie Walters spent eight days hauling fill dirt and sand and it really looked good when Mr. Batten and the C.E.P. crew finished.

Like last year September and October have been very dry, and the river is way below normal. Could it be that 1974 will be a repeat of 1973? Only time will tell.

Glen Farr

GREENWOOD STATE PARK

There have been a number of improvements made at Greenwood State Park during the past year.

The Trading Post was enlarged by seventeen feet. Central heat and air, a display case and shelving were part of the new renovations. The enlargement of the Trading Post made it possible to add additional items we were unable to offer campers prior to the new addition. There have been many nice comments made on the improvement.

Renovations were not complete in time to open at the first of the season, but with the added facilities and improvements for the campers, this year's revenue is exceeding last year's revenue by approximately \$2,500.00.

The restrooms located in the old camping area were renovated. The floors were tiled, new showers were installed, new screens and doors were also part of the renovations. We did necessary plumbing and painted the interiors of these restrooms. With the help of Ralph Shumpert, electric heat was installed in the restrooms which will make it possible for the restrooms to be used year round. A new boat ramp was added at Greenwood this year. The ramp is one hundred and five feet in length, thirty feet wide with dual lanes. The completion of this ramp gives Greenwood State Park a total of three ramps. Since the park is located on Lake Greenwood many of the park visitors are fishermen and people who enjoy boating and water skiing.

The ranger's and superintendent's residences were painted on the outside. The old paint was removed before a new coat was applied, and once this was done the new coat of paint did wonders for the residences.

The concession had to be painted (interior), baskets had to be tagged and made ready for the summer season.

The lifeguard quarters (boathouse) was painted on the inside and made ready for the lifeguards arrival. The ice storm brought with it much cleaning up, with fallen trees and broken limbs. A tree fell on one of the ranger's residences and caused some minor damage. The rangers and I had only completed roofing the residence a few months earlier. After the damage caused by the fallen tree, we had to replace quite a number of shingles. The garage at the same residence was reroofed and minor repairs made and the buildings painted.

March and April found the rangers at Greenwood painting park signs, food chests, site posts and installing trash can racks. May found the personnel doing necessary work in the new camping area where some of the sites had washed out. We laid terra cotta pipe in some areas of the road to help the drainage problem.

Shavings were put around the recreation building and playground equipment. The recreation program proved to be very popular. The children really enjoyed the carpet golf tournaments, water football, frisbee games, volleyball, softball, table tennis and table pool. The pool table was donated to the park by one of the campers, for the children to enjoy when the weather was too hot or raining outside. The horseshoe tournaments were well enjoyed by all ages. Each Friday night there was a slide show and each Saturday night we held our usual square dances. The attendance at the church services was larger than ever this year, with people coming from some of the privately owned cabins to attend the services.

The annual Fourth of July celebration was held at the park with a greased pole climbing contest, water balloons and egg tossing contest, etc. The main attraction proved to be the exhibition put on by the Anderson and Greenville Karate Schools. Some of the things I hope for Greenwood State Park in the future in ways of improvement is that the stone wall at the park entrance may be completed and the erosion at The Point may be stopped and/or slowed down to a great extent.

With the number of camping clubs using the recreation building for club meetings, dinners and recreational activities, I think some time in the near future it will be necessary to enlarge the building to accommodate the growing number of people.

In summary, I would like to give my sincere thanks to the Central Office staff, Mr. Kenneth Kolb and the personnel at Greenwood State Park for all the help they have given me which made it possible for this to be the best year yet at Greenwood.

Marshall Brucke

HAMILTON BRANCH STATE PARK

On June 1, 1973 the area known as Hamilton Branch, which had been operated by the Corps of Engineers, officially became Hamilton Branch State Park. It is located some fifteen miles south of McCormick on Highway 28 and is part of Hickory Knob Resort Complex. It is adjacent to beautiful Clark Hill Lake some five miles above Clark Hill Dam.

When the state obtained Hamilton Branch, there were some eighty-one campsites completed with water, electricity, tables and grills and were being heavily used, especially since the Corps of Engineers were not charging for any of the facilities.

The transition from free camping to \$3.00 per night for camping, effective on June 1, went a great smoother than I had anticipated and effected camper turnout very little, as we were practically full most every weekend during the summer.

The campsites are ideally suited to the individual camper since there is a minimum of approximately one hundred and fifty feet between each site. All campsites are well shaded and all have lake frontage to them. There were also two beautiful winterized shower houses, a boat ramp, and a picnic area completed when the State assumed control of Hamilton Branch. When I arrived at Hamilton Branch it didn't take me long to realize that there was plenty of work to be done immediately. The grass had not been cut by the Corp of Engineers since approximately a year and one-half before it became a state park. There were three water mains that had been leaking for some time that had to be repaired. Park cleanup was another big job.

The Corps of Engineers previously had contracted all garbage pick-up and all that was collected was what trash that was in the can itself. Topsoil was hauled in and grass was sown around the shower houses and the Superintendent's residence. All garbage cans were relocated to aid in garbage pick-up. Campsite numbers had to be placed at each campsite and the Corps of Engineers signs were replaced with state park signs.

New construction is well under way at Hamilton Branch. Under construction at the present time is one hundred and nineteen campsites, which will bring the total number of campsites to two hundred by the spring of 1974. Also under construction are seventy picnic sites, two shower washhouses, two toilets, five picnic shelters, a dumping station, and the paving of five miles of road.

We had a real good turnout this summer at Hamilton Branch and with the new facilities to be completed by spring, I anticipate a much greater turnout for this coming year. I do think, however, that if there were more for the young people to do, such as nature trails, bicycle rentals, playground equipment, etc. our business would be greatly increased.

Frank Baughman

HAMPTON PLANTATION STATE PARK

Since my family and I moved to Hampton Plantation in August we have been doing what could be considered general clean-up. We have done some underbrushing, cutting with the Gravelly, and I have just finished bushhogging in front of the big house. We have a lot of work ahead of us, but the results will be very rewarding.

I am very glad to say that we are getting a new well dug very soon. We need it very badly, and I would like to thank everyone concerned for all they have done for us.

We have many plans for Hampton, such as getting grass planted at the superintendent's residence and getting the residence underpinned. These are only two examples of the many things we hope to do.

I realize I cannot say as much about Hampton as you can about an older established park, but by next year we will have much more to report.

James Ivey

HICKORY KNOB STATE RESORT PARK

Since Hickory Knob State Resort Park is a new complex, this report covers a period from May 1973 through October 1973.

Our first project was the opening of the State Park Information Center which is located on Highway 378 between the entrance to Baker Creek State Park and the Little River Bridge.

The Center not only provides information for the Complex of Hickory Knob, Baker Creek and Hamilton Branch, but other Parks and recreation areas as well. We spent a lot of time underbrushing the area behind the Center to give a pretty view of the lake and the Pavilion at Baker Creek State Park. This information Center is well staffed and has proved to be quite helpful in giving out information to the visitors stopping by.

The opening date of Hickory Knob was delayed from July 1st to October 1st. The reason for this delay was caused by the heavy rainfalls in the early summer which caused the clay roads to be impassible at times. The main road leading into the Park was black topped about one week before the PRT Commission Member Meeting which was held here on September 27th, 28th and 29th.

We spent a good portion of the summer underbrushing the area across from the Lodge and Resturant and behind the cottages to give a good view of the Clark Hill Reservoir.

We also cleared about twelve miles of riding and nature trails. Playground equipment was installed in a wooded area between the lodge and the lake.

Facilities open at present are the 40-room motel units, lodge with recreational facilities, snack bar and gift shop, dining room, nine duplex cottages (18 units), two docking facilities, Tackle Shop and nature trails and the playground area. The barn, stables, and kennels, and riding facilities are completed but as of this date we have no operator for these facilities.

Since Hickory Knob State Resort Park is a new facility, most of the construction was done by contract; however, we had some assistance from a few staff members in erecting the playground equipment, cutting the riding and nature trails, and helping us get ready for the park to open to the public on October 1st. This assistance was greatly appreciated.

On July 2nd, George Settles of Abbeville, joined our staff as Group Sales Specialist and has done an outstanding job in booking the complete facilities for several large groups to hold their meetings here at Hickory Knob.

Dot Fakkema was transferred here as our Social Director and has done an outstanding job during the summer planning programs for Baker Creek and assisting the large groups that we've had here since opening. Since Hickory Knob is only partially completed, there is no doubt in my mind that the facilities here will be in great demand through the coming years.

Ted Barbie

HUNTING ISLAND STATE PARK

This year started off with the whale washing up for the third time. We had to call in the Beaufort County maintenance crew to bury it on higher ground in hopes that it would not wash up again. Also the big snow storm in February brought much excitement and debris to clean up.

In the campground area the new recreation building was completed and ready for use. Mitchell Brothers, under the direction of Buddy Jennings, came in and cleared the area for an additional 100 campsites and new comfort stations. Cabin #13 was purchased and completely renovated by the maintenance crew and ready for summer rental. The maintenance crew is here now to renovate all the cabins this winter. This is needed very much, and we are all excited about this project. Also the cabins will have good water piped to them and cabin users will not be required to haul their drinking water from the concession stand. The concession will be moved it's length from the beach and the old Trading Post in the campground will be moved near the swimming area and used as a restaurant. A new Trading Post is to be erected that will serve the campers and cabin users much better. We are all excited about the personnel barracks to be built. With most of our A-2 personnel from other parts of the State, this will be a welcomed addition to Hunting Island. Plans are also underway for a fishing pier, tackle box, boat dock and wildlife observation towers.

The Lighthouse Complex was restored to its original structure. Drain fields were repaired at Cabin 2, 3 and 7. New wells were put in Cabin 3, 11 and 13. We have had some damage at Hunting Island this year. Northeast winds and unusual high tides have caused much beach

erosion, debris, etc.

Two fires broke out and we had to call Lady's Island Fire Tower for help. After their men and equipment arrived, the fires were under control in a short time. No fatal accidents occurred at Hunting Island this year. One man did get caught out in the surf at the north end of the island, but Ranger Moore got to him in time. A lady had a bad cut on her foot that required stitches. Both were rushed to the emergency room at Beaufort County Memorial Hospital. Nurse Lois Gambrell took care of all minor cuts, sunburn, etc.

The summer programs got off to a big start and were the best I have ever seen. Programs were scheduled from 9 a.m. to 9 p.m. seven days a week. The new recreation building was opened for the Easter Sunrise Service sponsored by the St. Helena Baptist Church. Those responsible for the programs were Bobby Ramey, Recreator, Nick Roark, Naturalist, Bill Gambrell, Camp Chaplain and Lois Gambrell, Nurse.

Many campers volunteered their services and there was much talent among the children as was demonstrated in the skits, arts and crafts and games (indoor and outdoor). Nature trail hikes, scavenger hunts and beach walks looking for big turtles laying and burying their eggs were enjoyed by all.

The Nature Center was enjoyed by all with its many displays of interest. Thanks to Bob Papenfus for his help, and I believe Bob will agree that we had an excellent summer program. I should also mention that Bill and Lois Gambrell had a children's hour every afternoon at their camper in addition to children's hour and worship service on Sunday mornings.

Camping Clubs made use of the facilities here with cookouts and square dancing. Primitive camping was very popular this year at Hunting Island. We had Girl Scouts, Boy Scouts, church groups, and students from universities and colleges all during the year. Groups from Parris Island Marine Corps Depot, Marine Corps Aid Station and clubs used our shelters more this year. The carpet golf was used by many visitors to Hunting Island, as well as children from Fripp Island. The carpet golf tournament was a highlight, and the Palmetto Cup was won by defeating Edisto Beach State Park. This tournament will be continued each year. Bill Gambrell sponsored a table tennis tournament and was won by Bobby Ramey for 1973.

Thanks to PMA Orr, Rangers Martin, Brown and Moore for their extra efforts in taking care of the largest crowds I have ever seen at Hunting Island State Park.

They did all they could to keep everyone happy and have been complimented by many visitors on their nice manner.

Tillman Erwin

HUNTINGTON BEACH STATE PARK

I became superintendent of Huntington Beach State Park on August 22nd of this year. The superintendent before me, Mr. Lee Jordan, became superintendent of Kings Mountain State Park on the same day. Not having been on the park throughout the major portion of the year, I cannot give a full and detailed report on everything that has happened at Huntington since the last meeting. I can, however, with the help of several sources including weekly reports, 1973 winter work program, and park employees give a report on what I believe to be the major happenings which have taken place. Much of the 1973 winter work program consisted of painting the buildings on the park. The trading post was given a new exterior color. It was changed from sagebrush gray to Buckwheat (a light brown). The inside of the trading post was also repainted. Another building to receive a new exterior color was the concession stand. The interior of the concession stand as well as the interior of four restrooms were given a needed coat of paint.

The ranger's residence was an object of major attention last winter. Each room on the interior of the house was given a new color. Colors were selected by the park employees. In addition to the interior, the entire exterior of the house was painted with outside white house paint.

The carpet golf course was painted the new colors selected for all beach parks. At the beginning of the summer, there was a problem with the old flourescent lights at the course. Ralph Shumpert and Lloyd King were sent down, and with the help of the park crew new quartz lights and posts were installed. Repair work on the fence was

also done by the park crew.

Around the first of the year, an ice storm swept through the coast and proved to be quite an interruption in the winter work program. The park crew spent over four weeks picking up debris and broken limbs from the storm.

A welcome addition to the naturalist program was the construction of a spectator platform and feeding ramp located at the gator pond. The platform which was constructed by the park crew with treated lumber has three different levels that when added to the length of the feeding ramp gives everyone a chance to see and take pictures of the gators.

Perhaps the best thing that happened to the park this fall is the addition of a new 65' by 12' mobile home. The home has three bedrooms, an oil furnace, and central air conditioning. It was delivered and set up by Carraway Mobile Homes, Inc. The rangers and I are at this writing in the process of pouring footings and resetting the pillars. After the pillars are set, we will get a bid to have the trailer underpinned. A back porch and steps have already been constructed from scrap lumber on hand. A proposal has been submitted which calls for supplies to add a front porch this winter.

One of the problems which occurred during the summer was with the septic tank in the #1 restroom in the new campground; the tank is located in a low area. Besides the low location, the water table in the tank area is extremely high. The tank fills with liquids, and soon the restroom toilets are overflowing. The tank had to be pumped several times during the summer, which is a very costly service.

There seems to be two possible solutions to the problem 1) there is a possibility that adding more drain field will make the tank operative,

2) the sure solution is to construct a new tank and drain field on higher ground. Sewage would then be pumped from the original tank.

Huntington Beach had one very unwelcomed park visitor this past summer. The visitor was the notorious Southern Pine Beetle. At first it was hoped the beetle would die out after a short life span. Instead, he spread until something had to be done to combat the pine tree killer. Since chemicals are not effective on a large scale beetle epidemic, the only answer was cutting out the infested trees. The Brookgreen Foundation, having reserved the timber rights of the park when leased, brought in logging crews for a salvage operation.

Presently, approximately 60 acres of park property have been cut by logging crews. Most of the logging was done on the south area of the park, however a small cutting was made near the north boundary. Some infested trees were cut near the castle, and others cut around the superintendent's residence. The cutting ceased toward the end of October, but there are other potential problem areas which may have to be cut.

Hopefully, cold weather will slow the beetle. When I arrived on the park in late August, the seasonal recreator was already gone. After talking with other employees, I found that some of his most popular activities were movie nights, volleyball, softball, and inside recreation games. Something new at Huntington this summer was square dancing. A caller was recruited from the Grand Strand Strutters Club. Records furnished music, and the dances were quite successful.

The seasonal naturalist was Colonel Probst. He is an avid bird watcher, and very qualified nature walk interpreter. With out a doubt, his most popular activity was the daily feeding of the alligators. At five p.m. each day the new spectator platform was alive with visitors waiting to see the gators fed.

Before coming to Huntington, I never realized the number of people who visit the castle. Many people are fascinated with the old Huntington Home. At first glance, some think it's a prison, others a fort, and others think it is some kind of mission.

Many visitors can't understand why the building is so run down. They ask if there are any plans for restoration. I think that anything we can do to improve or preserve the building will be a great asset to the park. Since August, my staff and I have painted the outside doors, painted and repaired the storage area, removed the weeds and vines which were choking the bell tower, and kept the building clean. There are major repairs, however, which the park crew does not have adequate time or adequate skills to perform. Hopefully, we will soon be able to see a restoration program of some type. Until then, we will see that this interesting place is kept pleasant for visitors.

The park broke all of its previous records of attendance and revenue this past season. Huntington Beach is still a young park and like most of PRT is growing rapidly. In my opinion, the park is already giving many visitors pleasant recreational experiences. Huntington has the potential as do all South Carolina State Parks to give even better experiences to more people.

This should be a challenge to us as recreation and park professionals.

Larry Duncan

KINGS MOUNTAIN STATE PARK

This report of the activities that took place at Kings Mountain covers a period from November 1, 1972 through August 1973. It is divided into four categories: New facilities, Maintenance, Summer program and a General Summary.

NEW FACILITIES

The construction crew started on finished work of the new campground. Final work was resumed in the spring with completion of all phases of the campground in June.

The new picnic area was finished with a restroom, three shelters, grills and tables. A new parking area was made for this area. We renovated the pedal boat dock to accommodate a total of ten boats. Also a shed was constructed over the boats.

We rewired both group camps, placed all service cables underground, added new wiring and fixtures in all buildings.

MAINTENANCE

The major portion of winter maintenance work was central in the two group camps. Such work as repair to all screens, replacement of some wood work, painting and a thorough cleaning of the mess halls. Grounds maintenance was done in the spring. The water tank at Camp Cherokee was painted inside and out by contract.

The renovation of restroom #1 in the old picnic area was done by the park crew. Plywood paneling was installed and also new fixtures were added.

The rondette building was converted into a craft shop for park visitors to view wood crafts being done by Mr. Timms. The hardest job tackled by the park crew was the replacement of a portion of the roof to Shelter No. 1 and shingling it.

The park crew assisted the contractor in the construction of the rock wall at the trading post. Under normal maintenance procedures, repairs were made to all buildings and equipment prior to another summer season.

SUMMER PROGRAM

The summer season started early with the use of the Group Camps in March with limited weekend use. The pedal boats and carpet golf activities were opened in April. Usage ran high on weekends.

With warm weather and the official opening of the summer season in the parks, the bathhouse, swimming area and concession stand were opened to the public. Camping had already begun and with the addition of 75 new sites and three new restrooms, Kings Mountain became a favorite camping area. As in the past, the trading post was the focal point in the park. It turned out to be not a store for campers, but an information center for all park users.

SUMMARY

Since it is rather hard to enumerate all of the activities of the past year in one report, only the main points were brought out. With the addition of new facilities and plans for future development, not only at Kings Mountain, but throughout the system, the ever increasing needs for recreation areas will be met.

Andrew Kennedy

KINGS MOUNTAIN STATE PARK, PART II

The second half of this report will be brought to you by the present Supt. Lee Jordan from August 24, 1973 to November 11, 1973. Over the past twelve months many new facilities have been placed in operation at Kings Mountain State Park. We owe this thanks to PRT Staff, District III Supt. Robert Jones and the previous Supt. Andrew Kennedy and his Rangers for a job well done.

New Construction

For the past three months there have been no contracts or bids let for new construction.

Under Our Regular Winter Maintenance Program

Some major repairs are being made by local contractors, installing a new oil heater in the Supt. Residence. Also repairs are being made in the bath room by removing the old ceramic tile around the bath tub and replacing it with new tile.

Our other contract was let to renovate the Ranger's Residence bath room, which will consist of a new bath tub with a shower, lavatory, ceramic tile walls and vinyl floor. In our minor work program we have been very busy: The work shop and

Ranger Boulware's residence has a new roof. We propose a new roof for the Lake Crawford Bathhouse before spring if our shingles hold out.

PICNIC SHELTER AREA

Wired three shelters and added light fixtures and one base outlet for each shelter.

CAMPGROUND FACILITIES

In the new part of the campground we dug up the wiring on 15 campsites and rewired them due to electrical shortage. The washing machine and dryer were repaired and remounted. We installed new commode seats and toilet paper holders in most of the restrooms. The plumbing has been repaired, and the exterior and interior of circle "C" building has been painted. Also the exterior of the restroom circle "B" area.

To put the finished touch to our campground, all barbecue grills were painted aluminum and our food chest warm brown and all the rubbish and rocks have been removed from all campsites where campers had fires.

CARPET GOLF COURSE

Landscaping was done around the office building. Some railings and carpet rails were removed and new material was installed and painted.

CAMP YORK

The electrical system has been repaired on the well. The reservoir was filled with water and chlorine added and flushed throughout the plumbing system. We also repaired water fountain and replaced commode and tank in the infirmary building. Then we replaced pull chains and shower heads in all shower stalls. All mattresses from the cabins, diving boards and floats from the lake have been pulled and stored in the mess hall building. The water has been cut off and winterized.

CAMP CHEROKEE

The plumbing fixtures in this area have been inspected and repaired. We still have some minor maintenance to perform in this group camp, such as replacing some rotten sills, screen door and windows, installing hook and eyes on screen doors. This group camp cannot be winterized until after November 23, 1973. We still have one more booking for Thanksgiving.

Lake Crawford Bathhouse: The bathhouse has been scrubbed down, all swimming equipment removed from the lake and stored. The plumbing fixtures checked and repaired. The water cut off and winterized. Pedal boats have been removed from the lake and brought to the work shop. They were found to be in very poor condition for next season's operation. I have requested that we be issued ten new pedal boats to replace the old ones.

CONCLUSION

To improve our operational facilities and to better serve the general public, I suggest that our Trading Post, Carpet Golf Course and Pedal Boats be put on off season hours of operation from Easter to June 1 and from Labor Day until November 1 of each year thereafter. For example: Trading Post, Friday, Saturday and Sunday from 10:00 a.m. until 6:00 p.m.

Carpet Golf Course and Pedal Boats, Saturday and Sunday from 10:00 a.m. until 7:00 p.m.

I am sure if the above operating schedule was put on a permanent basis it would better serve the general public and the part time A-2 help that is employed by the park. I would like to suggest also that all facilities at Kings Mountain State Park be considered to be closed on November 1 of each year with the exception of the old part of the campground and one restroom which is winterized and heated. I think this would help our facilities, general public and enable park personnel to perform better maintenance on all facilities within our park before the next season begins.

Lee Jordan

LANDSFORD CANAL STATE PARK

Landsford Canal is a new park located on the west bank of the Catawba River in the northeast corner of Chester County about fifteen miles south of Rock Hill, South Carolina.

It consists of two hundred acres of land along the river. It encompasses Landsford Canal, which was part of South Carolina's internal improvements program during the early 1820's. The canal has been abandoned since 1837, but the canalway and the locks are still in relatively good shape due to the stone mason who built them. Restoration and clearing of the canal has not yet started.

Preliminary work has been started in the residential area of the park. The highway department has done a fine job making the residential area readily accessible by building a gravel road all the way into the area. At the park entrance they have begun building an intersection, with the curbing already in place, which will not only be attractive, but functional as well.

A six inch well was drilled to a depth of 310 feet which produces approximately 42 G.P.M.'s of excellent water. Water lines have been run to both residence sites and to the site of the partly completed, relocated Lockkeepers' House that was moved from the Rocky Mount Canal.

Underground electric service has been installed and is operable. Work has begun slowly on the superintendent's house.

The brick masons are supposed to start work this week on the period home. It should be completed by mid-March next year. In the years to come, this area should provide valuable insight to a bygone

era of South Carolina's early history, as well as good family recreation.

Jim Work

LEE STATE PARK

Our summer season was successful in every way. Camping was one big use even with the heavy rain in the first of the season. Our summer crew worked together just great and did a fine job.

Kathi Davis, the first girl lifeguard for me, did just fine. We were short of help this year but the kids pitched in and helped out. Thanks kids.

The air conditioners for the community building drew favorable comments from all users. I think they will be a drawing card in the future. The building use was up also.

The Hanes Company picnic was again our largest picnic. Over 1000 persons were in attendance this year and it was a big success as usual. Their program was more diversified this year with more events for the young and old. These people do a great job every year from parking cars to cleaning up when they leave. The picnic lasted from 10:00 a.m. until 4:00 p.m. with one or more supervisors at each event.

We just finished putting in the heaters in the comfort station in the new camping area. I know the campers will love this. So will the Power Company that turns that meter on. That meter sure turns. One thing I think we need for all the parks is a course in Lifeguarding, not lifesaving. A guard may have senior lifesaving or instructor's certificate and still not know how to be a good lifeguard.

Van Pressley

LITTLE PEE DEE STATE PARK

There was no major construction at Little Pee Dee State Park this year. A contractor completed pouring a new concrete spillway, which replaced an old wooden one that had been in use for years.

The ranger and I hauled clay and topsoil and tamped this in as backfill around the sides of the spillway. We then closed the flood control gate and filled the lake. In a few days we discovered we had some leakage around the sides of the spillway. Also at the flood control gate, which was not sealing properly. So we had to drain the lake again, remove the backfill, replace the backfill and tamp again. We used about four bags of cement around the mouth of the spillway. Then we aligned the flood control gate, closed it and crossed our fingers. As the lake filled there was no leakage at either point.

As most of you know I transferred to Little Pee Dee State Park on December 20th, 1972. So in moving and getting acquainted with a new park and all, I didn't take any leave until February of this year. The day we left on our vacation a few flakes of snow fell on us before we had gone fifty miles. The next day we heard on the radio about one of the biggest snows in the history of South Carolina. We spent our vacation in Southern Arizona and Old Mexico in the warm sunshine. How do you like that for timing? Mr. Caulder, Ranger at Little Pee Dee handled things admirably at the park.

Two families, a father and son that usually meet at Little Pee Dee got snowed-in in the old campground. One of their campers, a fold-out, caved in from the weight of the snow.

They moved into one of the restrooms and continued to enjoy their outing. Mr. Caulder offered to move them out with the park tractor but they declined saying they were faring well and having a great time. After vacation we got back to work completing some jobs Mr. Norton had started before his retirement.

At this point, I would like to say that Mr. Norton has been a great help to me since my arrival at Little Pee Dee. He seems to know everyone, especially the people in charge of county prisoners, mainstream, youth corps and the local highway maintenance crews.

These people are an invaluable source of help and as friends. We are all state employees working for the betterment of the state. I have found them all very friendly and helpful here in Dillon County. For instance, we needed quite a lot of fill dirt in an area around the boat dock. This area was boggy and smelly and just by asking we got about sixty loads of fill dirt put into the area. Other minor maintenance jobs i.e. clearing and plowing fire breaks, raking leaves, cleaning grills and fire circles, rescreening, trying to stop erosion, mowing grass, repairing boats, vehicle maintenance, etc. are jobs that have to be done over and over year after year. According to Mr. Caulder this year's attendance was about the same as last year with an increase in day users. The camping area is not used as heavily as it could be and this is where we are trying to increase our attendance. At least two thirds of our campers are from out of state.

We need a community building or a recreation building that can be used by the campers at night and by families and organizations on Saturdays and Sundays. The one picnic shelter we have does not accommodate all the requests we have for such facilities.

I have been in numerous state parks while vacationing and none of them are comparable in cleanliness to South Carolina state parks. In one state park each campsite was black topped and had a pull through, but the grounds and restrooms were not clean. It is the pride of the personnel in their work and their park that is the most noticeable thing in the park.

Marshall Waldt

LYNCHES RIVER STATE PARK

Thanks to the outstanding support from Mr. Sisk, Mr. Cooler, Mr. Jones and his Service and Supply crew, and the rest of the park staff, we feel we have accomplished much more than anticipated since beginning operations at Lynchess River.

Contracts completed include a three bedroom residence, an all metal work center, and a submersible pump and water tank. Plumbing and electrical work at these facilities and the trailer residence was also contracted.

The park crew, wiht the help of Mr. J. C. Truluck from Woods Bay completed initial clearing of approximately forty acres. This includes a small day-use area, two residences and the service area. We have also opened up the old stagecoach road and an old logging road that leads to the area the park pond eventually will be on. We also cleared the private cemetery that runs along the boundaries of the park.

The day-use area includes a twenty table picnic area along the banks of LynchessRiver. We have also started our first nature trail. Clearing has been completed and one footbridge built. We have the material on hand for two more bridges and the signs are being prepared by Service and Supply. We hope to open the trail shortly after the Superintendents Meeting. Use of the area has been fairly good, particularly on weekends. The majority of our visitors are mostly curious as to what the park will include when completed. Thanks to Mr. Dana Sawyer, we now have a park pamphlet, complete with a map, reflecting the programmed facilities.

We have also done extensive work around the two residences. The trailer has been permanently blocked and two porches constructed. A two hundred gallon fuel tank has been installed and a permanent pad laid under the air conditioner for protection. We also built a picket fence around the air conditioner for appearance. Plans are underway to contract underpinning with six blocks.

Cement pads have been constructed at the entrances to both residences and trash can racks installed. The yards have been cleared and graded in preparation for seeding grass.

The entire area around the work center has been cleared and graded. The work center has been set up and includes storage bins, a work bench, tool peg boards and racks for hanging garden tools. A radial saw bench was also constructed and we have improved the restroom by adding toilet tissues and paper towel racks and a mirror, soap dish and Go-Jo dispenser. We have also constructed a fuel tank rack and installed the tank for the work center heater. Additional fluorescent lights were also installed over the work bench and radial saw bench.

Work on the road beds include the grading in of approximately three hundred yards of sand clay in the day-use area. We have also graded in 159 tons of Crusher Run in the residence and service area and installed park signs.

Recommendations for improvements would be impossible at this time as the master plan for the park calls for almost complete use of available land and this leaves little to desire. Reflecting on our winter work program would not be practical as the phased development of the park will determine our work requests and suggestions will be submitted as we move on into the development of Lynches River.

I would like to close by again saying thanks to the park staff for their help and guidance. I would also like to thank Superintendents Craig, Adair and Taylor for putting up with my scrounging trips to their parks.

I would also like to thank Mr. C. B. Askins, District Six Commissioner, for his assistance with local problems.

Bill Bullard

MYRTLE BEACH STATE PARK

The 1973 season at Myrtle Beach has been pretty much successful. To begin with however, we had some bad luck. On January 20 an ice storm moved up the coast bringing some of the worst damage to the Myrtle Beach area in fifty years. Trees and power lines were torn down all over the park. Park personnel were out of power for one week. We were more fortunate than some of the residents as we had kerosene oil heaters which we put in the shop. All of the park personnel and their families stayed there and cooked together for the week. Work began on cleaning the park with the help of Charlie Walters and the chipper. It took eight weeks to clean up the debris from the storm. Three weeks later we had a snowfall of ten inches. This was beautiful and did not cause any damage. It just stopped transportation and held up work for several days. Due to the bad weather we did not accomplish much of our scheduled winter work.

In early spring a contract was let to build a personnel barracks. This building was completed on the first of July. It includes a kitchen, lounge, four bedrooms and two baths. This building housed 16 A-2 personnel. It is completely furnished with kitchen facilities, living room furniture and bedroom furniture.

Another new construction was a small rondette erected for camping, registration and information. It was placed at the entrance to our campground. This is going to help control the great amount of congestion that was created around and in the Trading Post area.

Another improvement was our road from the entrance to the park to the cabins which was resurfaced. This was done by the Highway Department and was greatly appreciated.

Another improvement that was accomplished on our winter work program was staining fifteen rooms in the five cabins. Also, our carpet golf was painted with the new pastel colors. One of the Ranger's residences was painted on the outside. Another was painted on the inside.

Contract has already been let to remodel the fishing pier. Plans are to enclose all porches, update concession, air condition and heat. This will improve the entire building. Having a building such as this will be a great improvement to the park and also will increase revenue.

Our summer season went along smoothly considering the amount of people we had. This year we had one of the best recreation programs that Myrtle Beach has had since I have been here. I give Pam Aiken, our Recreator, all credit for her initiative and interest in making her programs so successful. She had large crowds for all activities that were scheduled. I feel that Myrtle Beach State Park has great potential to be one of the most used parks in the system, because of it being in a resort area. Facilities such as our camping area have become outdated with the large camping units that are now in use. I feel that we are in great need of a new camping area with larger sites and sewer hook-ups. One of our most needed attentions at Myrtle Beach is camping facilities for single groups. We are the only campground in the Myrtle Beach area that will accept single groups to camp. Most of the young people that come to the beach are here to have a good time staying out late at night. Our park stays open until midnight giving everyone the opportunity to stay out and enjoy surrounding entertainment.

When most of the young people do come in they still intend to party by talking and playing loud music. This created problems for families who have small children trying to sleep. There were many nights that myself or a Ranger has had to get up and quieten groups at late hours in the night. I would like to say that not all young people come here to cause disturbances but are here to enjoy camping and park surroundings. This is why my interest is to ask that something be done to provide separate camping facilities for family and single groups.

As the 1973 season is approaching its end I want to thank the Central Office Staff, all my permanent employees and the A-2 personnel who helped to make the season successful.

Bobby Turner

N. R. GOODALE STATE PARK

I am happy to be at N. R. Goodale State Park and would like to thank Mr. Sisk, Mr. Brant, Mr. Kolb and the members of the Central Office Staff for the assistance they gave me in helping to relocate me in this new assignment.

When arriving at Goodale State Park, most of the construction crew was pulling out, leaving a job well done in record time. My new residence was ready to move into, and the park looked good. All the picnic tables with garbage racks and cans had been placed and grills installed. The bathhouse, concession stand and office had been repaired and rewired. Lifeguards had been employed, the concession stand was opened and the summer activities had begun.

The grounds and grass had been cut and the place was clean. Realizing that it was up to me to see that it stayed this way, I jumped right in with it, and I think it is pretty well under control.

From all reports received, it is my understanding that the revenue exceeded that of 1972. The public, as a whole, seemed to be very pleased over the idea of the South Carolina Department of Parks, Recreation and Tourism taking over the park. I am hoping they will continue to feel the same in the future.

The recreation equipment installed by Mr. Turpin is well enjoyed by all. This includes swings, see-saws, monkey-bars, tire trees, basketball courts, volleyball courts, and horse shoe pits. The pedal boats also go over quite well and we could use more.

Goodale is a beautiful park and potentials beyond belief. We have been in the process of trying to renovate a nine hole golf course and I do think for the short time we have had it, there has

been a tremendous improvement. I am hoping that it can be made into an A-1 golf course in the near future.

The lake is ideal for swimming and boating. At the head of the lake is a three mile trail following the main stream that runs through several acres of cypress trees where fish, alligators and wild ducks can be seen. It is quite intriguing to nature lovers as well as fishermen.

As for maintenance, we have painted the bathhouse and fences surrounding it, started on the reroofing of the pump houses, cleared quite a bit with the bush hog, repaired broken water lines and built racks to clean and store our pedal boats for winter. We have removed all of the old fencing and briar beds from around the flood gates, which greatly improved the looks. We also have plans to reseed and fertilize the trees and greens at the golf course.

Tom Wooten

OCONEE STATE PARK

All of us here at Oconee would like to welcome again each of you, especially to the new personnel that might be here for the first time.

Some of the park improvements we enjoyed over last year were:

1. A new amphitheater behind the trading post which was constructed of split oak logs and will seat up to 350 people. This area is utilized in our planned recreation program.
2. We have had many compliments on our newly renovated one room cabins. Numbers 7, 9, 10, 11 and 13 were renovated. This brings all the cabins up to year round use. We have witnessed a big increase in cabin use. Since Labor Day they have had peak use weekends and are now reserved through the first weekend in December.
3. A new tile floor at the bathhouse has been a great improvement.

Maintenance problems appeared to be less this season except in the septic tank department. Plans are now underway to correct this with a treatment system. We also had our share of broken water lines, mostly in the old camping area. Accidents were very low, the worst being a young man breaking his leg on the old ballfield. We called the emergency room at the hospital and some of his friends carried him down in their car.

We had a stroke victim in one of the cabins. We called for ambulance service and the lady was on the way to the hospital in about

twenty minutes.

We feel we had another good year with our planned recreation and naturalist programs. The building was almost full each Friday night with big overflowing crowds for the square dances. It was not unusual to have up to 1000 people for Friday and Saturday night talent shows. Even on Sunday mornings we had overflowing crowds. Another thing that has been helpful was the campground missionary - a position that I hope will be available next season.

We experienced the biggest year ever at Oconee. An increase in every phase with complete peak use on weekends. It appears that there is no turning back; recreation is in an upward climb so I hope each of you enjoy your work as much as I do. Thank you and it is good to have each of you here at Oconee State Park.

Bob Cothran

OLD DORCHESTER STATE PARK

Old Dorchester State Park has had a fairly good year, with the exception of a record breaking snow fall of 9 inches in February. In July we had an unusal amount of rain that resulted in flooding of the surrounding area. The Ashley River, which runs behind the Fort, overflowed its banks to an all time record high level.

There has been a sharp drop in attendance in the last three months, which I think can be contributed to the fuel shortage.

In November, we were host to the South Carolina American Historical Society. The archeologists who were excavating here displayed artifacts which were found.

Everyone from the society enjoyed the outing very much.

Red Hall

PARIS MOUNTAIN STATE PARK

Not as much new construction this year at Paris Mountain as in 1973 but we did get almost all we asked for. The old boat dock was torn down and enlarged to take care of 16 pedal boats. The existing wire fence was extended along with a gate to take care of the boat dock. Tile floors were installed in the restrooms at Sulphur Springs and a new bathroom was added to the superintendent's residence.

We were kept very busy with our maintenance throughout the year. Some of the jobs performed were clearing out and laying crushed stone on the road to the garbage dump. The stone was left over from the resurfacing job that was done on the park roads last year. We painted the check room and basket racks at the bathhouse. We also built a lifeguard stand for use on the diving tower. We had a large oak tree removed from Camp Buckhorn and had the power company to install a pole in the same area. We built steps down the embankment from the bathhouse to the boat dock. These along with the many everyday, every week, every month routine jobs kept us on the move year round.

We had two on-the-job accidents this year, both to the same ranger. One occurred when we were putting in the steps to the boat dock. One ranger was driving a pipe into the ground with a sledge hammer when it must have hit a root, came out of the ground like a shot and struck another ranger who was five feet back. It struck him over the right eye, knocked him out and required six stitches. He lost four days work.

The other accident occurred when we were moving some old

power poles in the camping area. One started rolling down an incline and instead of letting it go he tried to throw a stone under it but it came right over the stone and over his foot, breaking his big toe on the right foot. No time was lost on this accident.

This past February we were very fortunate to receive additional housing in the way of a house trailer. We have three rangers and housing only for one so needless to say this was a very much appreciated addition. It is located near the new BOR picnic area, sitting up on a hillside and with its color and setting I think it makes a nice addition to the park. I am fortunate again in the fact that I have two bachelor rangers and they share the trailer, however this isn't going to last too much longer as one of them has informed me that he is getting married next May. Both men are good rangers and we need them, so I'm hoping that something may work out where we might be able to get another trailer.

In May of this year we received a new Massey-Ferguson tractor and we were like a bunch of kids with a new toy. It is really nice to receive new equipment such as this. Our camping area was very successful this year although we never filled it up...we came close but not full. We are still having some erosion problems but are gradually getting them licked. We have painted the doors of the comfort stations with the new colors and we like them very much.

Some of you will remember that we have a cemetery in the middle of our camping area with eight graves well marked with two stones at each grave. Campers in looking for stones to build a campfire and not knowing that this was a cemetery would remove the stones and of course not replace them. At first a railfence was put up but this did not stop it, so I finally got Ray to have me a sign made. It reads, "Pioneer Cemetery - Please respect this area."

Since that sign was put up not one stone has been removed. Sunday church services were offered each Sunday by the Greenville Ministerial Alliance but I am sorry to say our attendance was very small. We lost seventeen large trees in the camping area to the pine bark beetle. Eight in one area and nine in another. We have already salvaged the trees and limbs and debris have been hauled from the area. While drafting this report I have been informed by my rangers that they have spotted two or three more in the area so it looks like they are still with us.

In our camping program Camp Spearhead served 368 retarded children. They had a daily average of 110 campers for 39 days. The largest single day in attendance was 152. They had a total of 67 counselors to help and served an average of 140 meals a day. Other groups such as Girl Scouts, churches and etc. took advantage of the park with periods averaging one week groups from 9:00 a.m. to 3:00 p.m.

On the waterfront we had a real year with large crowds all season. Swimming classes were held from June through August with an average of three classes a day. We had a turnover with lifeguards at the beginning of the season but we ended up with a good and alert crew. No major accident... a stumped toe or an insect bite being about the most of it.

Pedal boats were as popular as ever. We had sixteen boats in operation and at times if we had had the space and a lake large enough we could have used sixteen more. Pedal boats were in operation on weekends in April, May and September.

Our novelties went as well as expected with our limited space. The throw away bathing suit was by far our greatest seller. We are

into our winter work program now and if I can keep my crew well and intact and with some help from the construction crew we will be ready to go next spring.

Eddie Miller

PLEASANT RIDGE STATE PARK

Most of our work projects for the winter and spring of 1973 are filling washouts and replacing gravel in the camping area. We finally got some grass started on some of the banks which helped greatly. We also changed park colors. All the food boxes and signs were painted warm brown. The water tank was changed from brown to grey. We also enclosed the porch of the cabin where Ranger Michael Coggins lives to provide room for a washing machine and dryer--Mr. Ralph Shumpert connected the electricity and water. In the spring we built a boat dock for four (4) pedal boats and two (2) row boats.

Attendance was good at Pleasant Ridge this past summer. Many groups and families used the park facilities. Some of the groups were day campers, family reunions, church groups, and other organized clubs. Some church groups came early on Sunday morning, had Sunday school and worship services, a fellowship picnic, and then recreational activities.

We were honored to have a few distinguished visitors in our park this summer. One of them was General Westmoreland who visited with us on July 4th along with Mr. Dana Sawyer. He also visited in our home for a short time and had refreshments with us. We felt highly honored to have the General visit with us!

Our swimming area was used heavily on weekends. We are happy to report that there were no accidents !

The camping area was used by visitors from far and near. We even had campers from the British Islands and from up-state New York. We had one family of nine (9) from Kansas traveling and camping in an old school bus. Were we glad to see them leave! The camping area was filled only once--Labor Day weekend. We hope that our number of campers will increase in the future.

Leroy Smith

POINSETT STATE PARK

The period from January 1st to the middle of May, Horace Craig was Superintendent of Poinsett State Park. With the help of the rangers , the following information was given to me on work done before I arrived.

A much needed project was the renovation of the concession stand area. A wall was knocked out, shelves were built, and fresh paint was put on the walls. It made waiting on our customers easier, and the display area made sales much easier.

The dressing rooms in the bathhouse were given a new face. They were painted bright colors which made everything much fresher and more appealing to the eye.

Guttering around the bathhouse and the rewiring of the bathhouse were contracted out. These two jobs helped out a great deal this past summer.

Pedal boats which provide much enjoyment in the spring and summer were patched and the boat dock was painted.

At the entrance to the park, a new steel gate was erected which improved its appearance. The next undertaking was maintenance on the group camps where a lot of time has to be spent every year.

Here the kitchen and cabinets were painted, and formica was put on the tables in the kitchen of Mill Creek. The cabins were screened and cleaned in Burnt Gin before I arrived.

When I arrived at Poinsett about the middle of May, we continued with the readiness of the group camps for the summer.

Since Burnt Gin was completed, we began on Mill Creek's kitchen. We put in a hot water heater and installed a stainless sink. Then we replaced the screens that were damaged from the previous summer.

After the heavy maintenance, we washed down each cabin and the dining hall. With the help of Mr. Batten, we ran a 220V line for a dryer in each camp.

Now we move back to the park, where we painted nature trail signs, warm brown. Using this same warm brown paint, we started painting the food chests and camp site numbers in our camping area. With the available aluminum paint, we started painting the grills.

The doors on the comfort stations in the camping area got a bright look. They were painted Washington blue, gold, and gateway blue.

The recreation building in the camping area was painted sagebrush gray.

Our Kiddie Tractor which is a big attraction for all the children had a sand box added to the back of it.

I bet most people didn't know we had family cabins. We have five cabins, four for public use and one is a ranger's residence, and they do require maintenance.

We started by scraping all the cabins, and then we painted them sagebrush gray. Around the front of two of the cabins, we hauled dirt to help on the erosion problem.

We couldn't forget the inside of our cabins so new curtains were hung in each cabin. It certainly has helped the appearance 100%.

Under cabins three and four, we put doors up to help keep animals and the cold air out. One thing is a must when winter rolls around and that is the winterizing of the park and the group camps. Dennis Gunter is at Poinsett re-doing the Nature Center. When Dennis finishes, I would like to invite every one to see what a fine job he's done. I know that it will bring much more interest to our park.

Our summer programs found much use in the swimming area and our ten pedal boats. During one of our hottest times of the summer, our overlook picnic area was the setting for a wedding of a former lifeguard.

Our naturalist who also filled the position of recreator provided guided tours of the nature trail on the weekends and also provided nature films for our campers on Friday and Saturday nights and the crippled children day camp during the week.

We also had square dances once a month in the recreation building. In finishing, I would like to say that I hope I have given credit where it belongs. Even though Poinsett is one of our oldest parks, I feel that it is still a most beautiful park and can still draw the crowds.

James Taylor

RIVERS BRIDGE STATE PARK

This past year at Rivers Bridge, we have not acquired any new structures, but with the help of Buddy Jennings, Leonard Jones, Andrew Kennedy and Ray Sigmon of the Central Office, we have made a number of improvements.

My ranger and I rented a floor sander and went to work sanding the floors at our recreation building. We added three coats of fabulen, and the floors looked like new.

We also put vinyl tile in the kitchen and the restrooms. We left the recreation building and began our painting, which included all signs, grills, pump house and rest station in the campground which was painted inside and out.

We then mixed our concrete and installed garbage can racks. These racks are a big help in keeping the wildlife from scattering trash all over the park. Central heat was installed in the Superintendent's residence, and the old space heater was put in the shop. A closet was built around the furnace and a disappearing stairway in the hall ceiling. A new counter top and stainless steel sink was installed in the ktichen.

We replaced our water pump with a 3 x 5 Myers pump, which we picked up at Cheraw State Park. We then rebuilt our old pump so we would have a spare in case one quit pumping.

We finally got to our museum, where we have done a complete renovation. We poured a three inch cap of concrete on the floor in order to level it. Central heat and air conditioning was installed. A false suspended ceiling and lighting system was then completed by the park crew. Carpert was placed on the floor and new showcases

installed. Paneling and trim molding was then completed. At the present time Ray Sigmon is in the process of finishing displays and this will finish the renovation.

The showers at the bathhouse were tiled and new fixtures were installed and last, a hot water system was installed. Having hot showers brought more favorable comments from our swimmers than anything else.

At the time of this writing the tiling and plastering of our swimming pool is being completed. Renovation of the bathhouse has begun and a room addition to the Superintendent's residence is underway.

We received twenty one inches of snow last winter at Rivers Bridge. It was truly a beautiful sight, but is also caused considerable damage. The weight of the snow caused two of our small food sheds to collapse and the beams in the memorial shed to sag.

The recreation program at Rivers Bridge was headed up this year by Gordon Dannelly, who did a great job. Recreation events included square dancing, swimming classes, ping pong tournaments, archery, junior and senior life saving classes, basketball and campfire shows. The swimming and life saving classes attracted more than 250 swimmers.

During the past season, we received several comments and suggestions from park visitors. One suggestion was for a nine hole carpet golf course which would involve our elder visitors.

Another comment was for an ice machine so our campers and picnickers wouldn't have to drive 18 miles for ice. At Rivers Bridge we had one of our best years. If the weather and park enthusiasm which we had this year is consistent next year, we will again have another record year.

Jim King

ROSE HILL STATE PARK

At the start of the new year a new ranger was sent to Rose Hill. A new trailer was bought and set up for him and his family as living quarters. Then came the task of teaching him the technique of the things to be done on a small park.

We started our project of improvements by building a wagon shed which is 20' x 30'. After this was finished we moved an old schooner wagon and a buggy (from the 1800's) into it. The next thing was to start the painting of all outside buildings. The biggest job was painting the outside of the mansion. Boy was that a job!

The County Recreation Department was a new group that joined us this year. We had our usual groups, such as the Senior Citizens, Saddle Club, Boy Scout's Camporee, Family reunions, and various school groups on field trips.

We need a picnic shelter real bad. On several occasions we had need of a shelter, because groups would be having a picnic and it would start raining, then we would have to help them move into the kitchen building or the new wagon shed or the old shop building.

We need some more playground equipment. What we already have has really been enjoyed by the youngsters. The playground equipment that we have is a softball and bat, volleyball, badminton, horse shoes and basketball.

It has been a good year at Rose Hill with large crowds all admiring the mansion and the beauty of the Rose Garden.

We are planning our Christmas Affair at Rose Hill sometime about the middle of December. I hope everyone makes it up to see us.

SADLERS CREEK STATE PARK

Sadlers Creek State Park has just completed another highly successful season. Revenue and park attendance have shown a marked improvement over last season.

The pavilion area received quite extensive use this season. Although swimming did not show a large increase, there were more water based activities at the park. The addition of five pedal boats greatly enhanced visitor enjoyment. Swimming classes were productive, with approximately eighty children passing the Red Cross swimming program. The five bicycles had good response again this season, and picnicking as usual was the favorite park activity.

Camping also proved very popular this season, with many campers being turned away each weekend. We hope this problem will be temporarily solved with the completion of our new 75-site campground. There have been several improvements made since last year to include a concrete walk built between the bathhouse and the swimming area.

All park signs were repainted with the warm brown color. New trash can holders were put up throughout the park, and have tremendously cut garbage collection time and a boat dock was constructed to facilitate the pedal boat rentals. We have been very fortunate this year with our maintenance problems. These problems have been few and far between, with the worst being clogged sewer lines. As always the majority of our time has been spent cutting grass throughout the park.

At this time we have started our winter work program, most of which will be centered around the new campground. At this time the new 75 sites should be opened for winter camping within a couple of weeks.

I would also like to take this time to thank the park personnel, Central office, construction crew, and District Superintendent Bob Jones for their time and effort to make this past year successful at Sadlers Creek.

Joe Hambright

SANTEE STATE PARK

I came to Santee in early May and would like to thank Mr. Sisk, Mr. Brant, Mr. Kolb and the members of the Central Office Staff for giving me the opportunity to be in such a fantastic park.

I would also like to thank Leonard Jones, Mr. Batten and all the men at the State Parks Service and Supply Center for all the assistance they have given me and also my crew. Without them we could not operate.

Several projects had been completed before my arrival at Santee last May. There had been extensive work done on the Assistant Superintendent's residence. A new kitchen had been installed, paneling throughout the house, and a lot of plumbing. This was great experience for the rangers and Mac also had a much nicer residence in the end.

The winter would not be complete without some ice damage to one of the parks. Santee received the blows this time with ice breaking a lot of the trees, causing havoc with the power lines. While cleaning up the road shoulder, Mac Flood received a blow to the head, and from the reports I received, he almost went to the big State Park in the sky.

Floating docks were added to the Rondette Piers, which were a welcome addition, because a large percentage of our guests are fishermen with boats.

The old nature center was then reroofed by park personnel to turn the rain when the monsoon season hit us in June with three long weeks of rain and dwindling attendance.

The new boat ramp was also started near the 100 site campground and is now near completion. This ramp has proven to be very popular with sportsmen because it is nice and deep which makes launching an easy chore. At this time the lake level has dropped and Mr. Neal is back at work finishing the steps on the ramp.

Upon my arrival in May, we had quite a task ahead of us, preparing for the NCHA Campout. We had over three hundred units registered, and by Saturday quite a few activities were going on. There were flea markets set up on the roadside in the campground for the campers to bargain with. Mr. Turpin and Mr. Papenfus also had planned activities, such as horseshoes, volleyball tournaments, etc. A dance was held on Saturday night which was enjoyed by young and old alike.

The Spring Camporee kicked off the summer season for us, and from there we had a summer filled with long hours, lots of work and rewarding thanks from our visitors. My first summer season at Santee was quite an active one, with only minor problems. Mr. Buddy Jennings came down for a weekend during my second week at Santee and has not been back. Could it be me or the service he received that's keeping him away?

June passed by rather fast with very good attendance and only minor everyday problems. Mr. Keese, Batten and King installed a new water filter system on the Rondette pump which has certainly helped us with our water problems and also to keep the toilet bowls clean.

In June, Ranger Carroll Leopard joined the Santee staff and we felt very fortunate to have such a fine man working with us. This goes to prove Mr. Brant does a splendid job in selecting park personnel.

July came on real fast with a visit from Mr. Sisk on the 4th. I saw a lot of fireworks that day and by noon, I felt the seat of my pants had a big hole burned in them. The rest of July went smoothly, with everyone working hard and suffering through the almost unbearable heat. July also brought us a much needed front end loader to help us in combating the erosion problems we sometimes have.

August came and found us in the process of helping set up the new I-95 Welcome Center. We built a flagpole and hooked up the air-conditioning unit which was good experience and was also helping our Sister Division. Toward the end of August, the archaeologists that had been working at the Santee Indian Mound were beginning to pull out. These men and women did a fantastic job uncovering an old burial ground. This revealed many interesting skeletons and a lot of other things that I know very little about.

Near the end of August, everyone was looking forward to a long awaited Labor Day and rest, but we still had the Fall NCHA Campout in just a few weeks. We should not have bothered worrying ourselves because we had plenty of help preparing with Mr. Kolb and the CEP crew.

When the weekend of the campout finally arrived, again we had plenty of help from rangers from various parks, Mr. Papenfus and Mr. Turpin and their assistants. Mr. Sisk joined us on Saturday to welcome the campers to Santee and attended the Saturday night dance. Everything went over very well and by Sunday the campers pulled out

very pleased with a most enjoyed campout.

We have built and installed new benches on the fishing pier that have gone over quite well with the fishing set. Instead of standing, now they can sit and fish their hours away.

Recently two new dams were started for ponds near our 100 site campground and from all appearances I believe they will make a beautiful attraction to that area.

In September we lost Assistant Superintendent Don Holloway to Superintendent Barbie at Hickory Knob. Two days later Ranger Nesbitt was transferred to Superintendent Miller at Paris Mountain. These were great losses, but we gained two fine men in maintenance, Assistant Superintendent Don Elliott and Ranger Charles Hatfield.

During the months of September and October, we have completed several projects, like the task of general cleanup around the old CEP area. Assistant Superintendent Flood and Ranger Felder with the able assistance of two CEP's did a superb job in building a new grease rack and pit to do much of our own vehicle maintenance.

Just recently we completed a new septic tank and drainfield for a much needed bathroom at the park shop.

This cool weather has brought in many business groups to our beautiful cottages located around the lake and we have received nothing but favorable comments from these groups, and are looking forward to them returning here when they have their next meeting. Mrs. Kolb and the crew at the grill have been doing a wonderful job keeping these groups happy and their stomachs full.

We are also scheduled to have the Rondette road paved with South Carolina highway funds. I will surely be glad to see this happen. It will cut our A/C filter replacements in half and the dust won't be so unbearable.

We still have a lot of work left for this winter and spring, but we enjoy every minute of it. From Santee we still believe nothing could be finer than a morning in Carolina!!!

Horace Craig

SESQUICENTENNIAL STATE PARK

Disregarding the fact that total park visitors are down, we feel we have had a good year at Sesqui, and we know that we have had a busy year. The decrease in total visitors may be partly due to the fact that undesirable type visitors have increased. Vandalism in many forms has a very discouraging affect when you are trying to build and preserve something for the public. We've had buildings, signs and vending machines defaced and damaged; one straw field burned over by a careless smoker, which fortunately did not seriously damage a stand of six year old slash pine. We find that increasing indications of drug and alcohol use in the park along with irresponsible motorcyclists and auto drivers are giving us fits. Injuries have included a concussion, broken collar bone, broken arm, multiple fractures of the leg and ankle, extensive body bruises and abrasions.

Fortunately, these poeple have injured only themselves and each other, with one exception. A horse, frightened by a motorcycle, threw the rider and dislocated her shoulder.

We are in the process of putting up new and more speed limit signs and marking areas where no vehicles are allowed. Someone even put sharpened stickes on a fire break to slow the bikes down. Luckily, it was found before another accident occurred.

Following our meeting last year and the very unusual winter, we managed a few improvements at Sesqui. The tile roof on the Assistant Superintendents residence was repaired and a new screen wire was installed throughout. Screening was also completed in the bathhouse in the old camping area.

I think we may have to make some changes in the electrical service to the old campsites, as we are beginning to have trouble with the circuit breakers. Three to six sites are on each circuit at present.

As spring appeared, we dropped the water level in the lake and tacked the concrete retaining wall on our beach with an electric impact drill. We finally managed to punch a few holes through cracks that already existed in an effort to get better drainage from the beach which had become a mud hole.

During the swimming season, sand is washed away from the jagged concrete footings causing numerous injuries to swimmers' feet. We had to rent a jack hammer to smooth the front of the beach wall. It sure was funny to see the hammer standing there and little Gus Krajcik bouncing on the top end. The whole park crew shook off a few pounds on that job.

The next project was to remove and rebuild the rusted out ladders and hand rails on the diving platforms in the swimming area. We appreciated the fine assistance we received from Leonard Jones and his crew on this project. (They threaded and put together the new pipe.) We painted and re-installed it.

With the annual repair to Dream Boats, Water Skeeters and row boats, the water front was ready for another season except procuring two new diving boards which arrived before the season opened.

About the middle of the swimming season, Mr. Sisk made it possible for us to fence off part of our swimming area and put up a small slide in the newly created kiddie pool. This addition is very popular with sunbathing mommies who don't want to stay in the water with the little ones. It keeps one lifeguard busy keeping teen-agers

and even adults off the slide and out of the little pool.

Some of our citizens complained that the Nature Trail was too long. (So did some of the younger couples who had to backpack thier kiddies more than half way around.) Bob Papenfus took care of this problem by making a shorter trail by using part of the old trail. He had new numbers made and placed on the trail to match the new brochure he designed. The Sand Hills Nature Trail is now The Wild Plum Trail.

The concession stand in the picnic area was a source of irritation to everyone, expecially the Health Department, due to the many flies, yellow jackets and other insects. Special designed screens were constructed and installed by the contractor, and the situation is much improved. We hope to paint and make other improvements there before next season.

The last addition to the park was our bright red tractor. It now rests on four pillars in the play area, just high enough to make the tires look inflated. It doesn't take much to make the small fry happy. While one is driving, six are playing mechanic and two others are washing it with paper cups of water from the water fountain.

As meeting time approaches again, we have been working our firebreaks over and a new roof is on picnic shelter #2. The central portion of the bathhouse has been painted and the rain gutters repaired. Some picnic tables have been repaired and there are more tables and food chests to be repaired and painted.

The season was saddened by the loss of one of our swimmers. It was my first, and I hope last experience of this nature. A blood test revealed a very high alcohol content in the victim.

In closing, "Gus" Krajcik and "Chuck" Grant send their best regards to everyone and we all from Sesqui wish everyone a Happy Thanksgiving, Merry Christmas and best wishes for the coming year.

Jim Meadors

TABLE ROCK STATE PARK

The year 1973 at Table Rock State Park was a very rewarding one. It seemed as though there were more people on the park and through the park office than could possibly live in the United States.

We had a very good season in all activities. The month of June was a wet one, but things sure picked up in July and made up for lost time. Attendance in swimming was better than ever, as was miniature golf, hiking, the country store, the concesstion stand and camping.

The new addition to our boat dock proved to be a successful one as it added 10 new boats to our fleet making a total of 20. We also replaced the 10 old boats with new ones. On weekends it seemed as though we could use 40.

The campground was filled to the brim every weekend. We also had quite a few camping clubs throughout the summer. On July 13 - 15, the BMW club had a Table Rock Rendezvous Rally in the old campground. There were quite a few representatives from several states. We are looking forward to July '74 when the BMW club will hold their national rally at Table Rock.

All of our cabins stayed booked up the entire summer. We saw quite a few new faces along with old faces of the year past.

We also had some trouble with the dam on the lake. By Labor Day the lake had leaked out 18 inches of water. The diving platform had to be closed the last few days of the summer season due to people getting stuck in the mud. However, Bob Jones, Drew Kennedy and some of the rangers adjusted the shims on the gate which took care of the dam problem.

The chapel had very good attendance this summer with 75-100 people in attendance every Sunday. There were a few weddings in the chapel, including one held on July 4 which added to the festivities of the day.

The A-2 personnel for the summer of '73 proved to be the best ever. They were all very much interested in their job and in doing it well. I was very fortunate to have such a talented group of people on my staff. The regular staff also proved to be the best ever as they coped with the everyday problems that park life brings.

We are well under way with our winter work program. We have reshingled the shop and are now in the process of reshingling 9 of the 12 cabins. We built a new grease rack at the shop which was very much in need. The old one was so rotten we didn't drive the trucks up on it for fear it would fall down.

There have been new lavatories installed in the bathrooms of some of the cabins and also light fixtures. There have been new hot water heaters installed in cabins 10 and 11. We will build new cabinets in cabins 4, 5 and 9. Electric heat will be added to cabins 1, 2 and 12 making all cabins open for year round use.

This spring the grounds around the chapel will be landscaped with new shrubbery making the area even more beautiful.

There will be a lot of work done on the lodge. There will be a dumb waiter installed, heat added to the upstairs, rock work done outside, and the patio will be regrouped. We have also put new light fixtures upstairs.

This winter we will be adding a new touch to the bathhouse with remodeling and tiling the shower stalls and restrooms.

The pine beetles hit us again this year. I hope that the cold weather will get rid of the pesty insects.

The leaves around Table Rock this year were extremely beautiful. It really looked as though Jack Frost had been skipping across the fields and forest with paint brush and easel.

We would like to congratulate Paul Manous, who left the Table Rock staff to join the staff at Greenwood as a Ranger II. Also John Rhodes who was promoted from PMA to Assistant Superintendent at Table Rock. We want to welcome Robert Mitchell to the staff at Table Rock as Ranger I.

Hope to see everyone at Table Rock in the year 1974.

Mike Hendrix

WOODS BAY STATE PARK

Woods Bay was acquired by the Department on July 18, 1973. It is a Carolina Bay and as I understand it is to become the first full scale Nature Park in South Carolina. I don't think we could have made a better choice.

These Carolina Bay's do not occur any other place in the world. It has never been proven what caused the Carolina Bay's. The only study was made by Douglas Johnson and his theory is that the Bays were caused by a shower of meteorites coming in from the southwest. He did establish the age of the bays at 10,000 years old. This theory seems to make sense because all of the parallel axes are alined in the direction. The sand hills are on the northern and southeastern sides of the bays.

Douglas Johnson says that impact and tremendous heat when the meteor hit is how the sand hills were formed. Woods Bay covers an area of over 2,000 acres including the sand hills.

Woods Bay is the home of many alligators and many forms of bird life. Around the edges there have been reports by game wardens of Black Bears on the sand hills. Woods Bay will not only be an attraction for people wanting to see nature but also will be of interest in other ways. We have saved portions of swamps but this is the finest Carolina Bay that will be put in a park. I have been at Woods Bay working for two weeks and not much has been accomplished so far. The Highway Department has put a piece of tile in the ditch. The county used a bulldozer to cut a road to the spillway at the millpond.

They also hauled in 5 dump truck loads of sand clay to fill in the break in the dam. Mr. Cole of the Soil and Water Conservation Department surveyed around the bay to see how much we could raise the bay water. The survey showed we could raise it 2 feet. This would put it back to its normal level.

I have been cleaning up around the area where the mobile home is to be placed. We also cleaned out the spillway at the millpond which was stopped up. Also we bricked up part of one side of the spillway.

Things that I think should be done first would be
1) to raise the dam behind the millpond which holds the bay water back to its normal level. Then we could have canoe trails throughout the bay, 2) Drain and clean the millpond. The millpond is manmade and like anything manmade it has to be restored. The millpond was dammed up during the War Between the States and has been filled in. Fifteen years ago it was one of the prettiest millponds in the state. I would stock it with large mouth bass, bream and crappie. The only thing in the millpond we would want to save is the alligators and when the millpond is drained they will go back in the bay.
3) rebuild the old grist mill at the millpond. Purchase the sandhills which are a major part of the Carolina Bays.

They serve as a natural dam and would give us a way of controlling hunting and dumping around the bay. Without the sandhills we don't have a complete Carolina Bay.

J.C. Truluck

