

The National Parks: Lesser-Known Areas

J84
I 29.9/2
P 21/985



The National Parks: Lesser-Known Areas

**Produced by the Office of Public Affairs
and the Division of Publications
National Park Service**

**U.S. Department of the Interior
Washington, D.C. 1985**

National Park Service U.S. Department of the Interior

As the nation's principal conservation agency, the Department of the Interior has responsibility for most of our nationally owned public lands and natural resources. This includes fostering the wisest use of our land and water resources, protecting our fish and wildlife, preserving the environmental and cultural values of our national parks and historical places, and providing for the enjoy-

ment of life through outdoor recreation. The Department assesses our energy and mineral resources and works to assure that their development is in the best interest of all our people. The Department also has a major responsibility for American Indian reservation communities and for people who live in island territories under United States administration.

Contents

Introduction 4

Maps of the National Park System 6

National Park Service Regional Offices 9

Lesser-Known Areas Listed by State 10

Index 48

98-4

Lesser-Known Parks: Doorways to Adventure

Few travelers are familiar with most parks described here. Many are located away from principal highways or are relatively new to the National Park System. And most, but not all, are smaller than the more popular parks. Yet these sites contain nationally significant scenic and cultural resources, many of comparable quality to the more famous parks.

The natural areas offer a fascinating variety—lush forests, desert landscapes, massive gorges, fields of wildflowers, and natural and man-made lakes. They serve as precious habitat for wild creatures—bears, mountain lions, foxes, bighorn sheep, deer, eagles, owls, and waterfowl.

Many lesser-known parks are historical areas, such as battlefields of the Revolutionary and Civil Wars, forts along the routes of western exploration and migration, ruins of the dwelling places of pre-Columbian native peoples, and homes of Presidents and other men and women who contributed significantly to the nation's progress.

Many of these parks offer both natural beauty and historical interest. Even during busy seasons, they are not heavily used, so you may explore them and learn their secrets at your leisure.

Preparing for a Park Visit

Plan ahead, to make your trip more rewarding. For more information on individual parks, please write to those parks, or to the National Park Service offices listed on page 9.

About one-fifth of these lesser-known parks charge an entrance fee of \$1 to \$3 per private passenger vehicle. If you plan to visit several parks that have entrance fees, you can save money with the \$10 Golden Eagle Passport. It provides entry to all national park areas for one calendar year. Visitors 62 and over qualify for a lifetime Golden Age Passport. It provides free entry and a 50-percent discount on federal camping and other use fees. Proof of age is required; applicants must appear in person. Blind and disabled persons who qualify for disability benefits under one of several federal programs may obtain a free Golden Access Passport. It must be applied for in person and provides the same privileges as the Golden Age Passport.

All three passports are available at the entrances of "fee areas," from National Park Service Regional Offices, or from National Park Service headquarters, U.S. Department of the Interior, Room 1013, 18th and C Streets, N.W., Washington, D.C. The Golden Eagle Passport only can be obtained by mail from the National Park Service, P.O. Box 37127, Washington, DC 20013-7127.

Enjoying Your Visits

Try to make the visitor center your first stop at any park. There you will find information on attractions, facilities, and activities, such as scenic drives, nature trails, and historic tours. Descriptive films, literature, and exhibits will acquaint you with the geology, history, and plant and animal life of the area. The park staff will answer questions about accommodations, services, and the accessibility of attractions. Most parks described in this book do not offer meals and lodging.

Many parks can provide assistance for those who have visual, auditory, or other physical limitations. Most have parking lots, restrooms, and other features that are accessible to disabled persons. If accessibility is important to you, however, inquire in advance.

Care for Persons and Resources

Observe common-sense safety rules. Natural hazards abound in outdoor areas, especially for those unfamiliar with such terrain. Watch

your children. Never approach wild animals, even small ones. If you swim or climb or take hiking trips, do so with a partner, and tell someone on the park staff where you will be. Historic buildings are old; watch for low doorways and steep steps.

Please remember that our parks protect natural and cultural resources that can be fragile. To avoid inadvertent damage, please follow the suggestions of park staffs. Special restrictions sometimes apply to backpacking or boating to protect backcountry areas from overuse. Free permits to use certain backcountry trails and areas are issued at the parks. In some cases, such permits may be obtained by mail in advance.

Other Sites to Visit

Many of these parks are close to state parks, national forests, and other reservations providing additional recreational and camping opportunities. Information on such areas is available from state travel bureaus or from federal land managers. The latter include the Forest Service, U.S. Department of Agriculture; the U.S. Army Corps of Engineers; and the Bureau of Land Management, Fish and Wildlife Service, and Bureau of Reclamation of the U.S. Department of the Interior.

National Park Handbooks

Official National Park Handbooks exist for many of the parks described in this directory and guide. Though many of these areas are not well known, the stories they embrace are integral parts of our history, culture, and heritage. For information about how to obtain the official handbook that explores the area or areas you are interested in, call or write to the park superintendent before your visit. Telephone numbers and addresses are listed for each park.

The National Park System

Lesser-Known areas shown in color





The National Park System (continued)

Alaska



Seven national park areas in Alaska have adjoining national preserves, counted as separate units of the National Park System. They are: Aniakchak, Denali, Gates of the Arctic, Glacier Bay, Katmai, Lake Clark, and Wrangell-St. Elias.

Guam

War in the Pacific

Hawaii

USS Arizona Memorial

Kalaupapa

Haleakala

Puukohola Heiau

Kaloko-Honokohau

Pu'uho'u o Honaunau

Hawaii Volcanoes

Puerto Rico and the Virgin Islands

San Juan

Virgin Islands

Buck Island Reef
Christiansted

Regional Offices of the National Park Service

North Atlantic Region

15 State Street, Boston, MA 02109

Connecticut, Maine, Massachusetts, New Hampshire, New Jersey, New York, Rhode Island, Vermont

Mid-Atlantic Region

143 South Third Street

Philadelphia, PA 19106

Pennsylvania, Maryland, West Virginia, Delaware, Virginia, excluding parks assigned to National Capital Region

National Capital Region

1100 Ohio Drive, S.W., Washington, DC 20242

Metropolitan area of Washington, D.C., some units in Maryland, Virginia, West Virginia

Southeast Region

Richard B. Russell Building

75 Spring Street, S.W., Atlanta, GA 30303

Alabama, Florida, Georgia, Kentucky, Mississippi, North Carolina, South Carolina, Tennessee, Puerto Rico, the Virgin Islands

Midwest Region

1709 Jackson Street, Omaha, NE 68102

Indiana, Illinois, Iowa, Kansas, Michigan, Minnesota, Missouri, Nebraska, Ohio, Wisconsin

Rocky Mountain Region

P.O. Box 25287, Denver, CO 80225

Colorado, Montana, North Dakota, South Dakota, Utah, Wyoming

Southwest Region

P.O. Box 728, Santa Fe, NM 87501

Arkansas, Louisiana, Texas, Oklahoma, New Mexico, northeast corner of Arizona

Western Region

450 Golden Gate Avenue, Box 36063

San Francisco, CA 94102

California, Nevada, most of Arizona, Hawaii

Pacific Northwest Region

2001 6th Avenue, Seattle, WA 98121

Idaho, Oregon, Washington

Alaska Region

2525 Gambell Street, Anchorage, AK 99503

Alaska national parklands

Alabama

Horseshoe Bend National Military Park
Route 1, Box 103, Daviston, AL 36256
(205) 234-7111

Site of the battle of March 27, 1814, on the Tallapoosa River. General Andrew Jackson's forces broke the power of Creek Indian Confederacy and opened Alabama and other Old Southwest areas to settlement. Visitor center, self-guiding tour of battlefield, nature trail, exhibits, flintlock rifle demonstrations, hiking, picnic area, launching ramps.

Location The park is on Ala. 49, 12 miles north of Dadeville and 18 miles northeast of Alexander City via New Site.

Accommodations Meals and lodging available in Dadeville and Alexander City. Camping facilities in Wind Creek State Park, Talledega National Forest, Mt. Cheaha State Park, nearby.

Russell Cave National Monument
Route 1, Box 175, Bridgeport, AL 35740
(205) 495-2672

Archeological site of 8,000 years of human life on this continent, encompassing Archaic, Woodland, and Mississippian Periods. Visitor center with museum, cave shelter audiovisual program, nature trail, hiking trail, horse trail, film and slide programs, archaic weapons demonstrations, lunch area.

Location 8 miles west of Bridgeport. From U.S. Route 72 at Bridgeport, follow Jackson County Roads 91 and 75.

Accommodations Meals and lodging available in South Pittsburg, Tenn., and Stevenson, Ala.

Tuskegee Institute National Historic Site
503 Old Montgomery Road
Tuskegee Institute, AL 36083
(205) 727-6390

Booker T. Washington is credited with having founded this college for black Americans in 1881. Preserved here are student-made brick buildings; The Oaks, family home of Booker T. Washington; the George W. Carver Museum; and an antebellum mansion, Grey Columns, which is the visitor center. Bookstore, exhibits, film and slide presentations, self-guiding tours of historic campus district and Carver Museum, guided tours at The Oaks,



Horseshoe Bend



Tuskegee Institute

self-guiding nature trail.

Location On Old Montgomery Road (State Route 126) adjacent to the city of Tuskegee.

Accommodations Meals and lodging on Tuskegee Institute's campus during regular academic periods, and within the city of Tuskegee. Forest Service camping facilities within 15 miles of the site.

Alaska

Katmai National Park and Preserve

Box 7, King Salmon, AK 99613

(907) 246-3305

Rugged shoreline backed by mountain wilderness and the dying Valley of Ten Thousand Smokes. Home of the brown bear and bald eagle. Fishing, camping, guided tours, hiking, wildlife sanctuary, nature trails, chartered boats available.

Location Katmai is 250 air miles southwest of Anchorage. Travel from King Salmon to Brooks River is by amphibious bush aircraft.

Accommodations Modern facilities at Brooks River Lodge and Lake Grosvenor. Write to the lodges at the park address.

Klondike Gold Rush National Historical Park

Box 517, Skagway, AK 99840

(907) 983-2921

Combining the historic district of downtown Skagway and the old Trail of '98 from Skagway to the Chilkoot and White Passes, the park reflects an atmosphere of the old-time gold rush era. This unit complements the Visitor Center in Seattle's Pioneer Square, where gold seekers took off for the Klondike. Exhibit, museum, self-guiding tour/trail, picnic area, camping, hiking.

Location Skagway, Alaska. Chilkoot Trail begins 12 miles west of Skagway at the ghost town of Dyea and ends at Bennett. Accessible by boat, plane, or highway.

Accommodations Food and lodging in Skagway. Campgrounds at Skagway and Dyea.

Sitka National Historical Park

Box 738, Sitka, AK 99835

(907) 747-6281

Battleground where Russian supremacy over Tlingit Indians was achieved in 1804. Site of Russian fort, totem poles, and other artifacts. Visitor center, self-guiding trails, native crafts workshops, museum exhibits, totem poles, picnic area.

Location Located on Baranof Island in southeastern Alaska, the park may be reached by scheduled airlines from Seattle, Juneau, and Anchorage. Sitka is a port of call on the Alaska Marine Highway System.

Accommodations The park is within walking distance of downtown Sitka's hotel accommodations and meals.

New Alaska Parklands

Ten other lesser-known parks in Alaska were authorized in their present forms by the Alaska National Interest Lands Conservation Act of 1980. These parks have almost no federal facilities and usually no accommodations other than primitive camping. Some can be visited by automobile, bus, or railway; others can be reached only by air.

These parks reward those who can visit them with some of Earth's most magnificent scenery. All exceed one-half million acres in size; Wrangell-St. Elias National Park and Preserve encompasses more than 13 million acres. They provide habitat for a marvelous assortment of wildlife. Subsistence hunting is permitted in some of these national parks. Both subsistence and sport hunting are permitted in the national preserves.

For information on visiting, write the superintendents of the individual parks, or write the Alaska Regional Office, National Park Service, 2525 Gambell Street, Anchorage, Alaska 99503.

Brief descriptions of these 10 areas follow.

Aniakchak National Monument and Preserve

Box 7, King Salmon, AK 99613

(907) 246-3305

Aniakchak Caldera covers some 30 square miles in the volcanically active Aleutian Mountains. Aniakchak last erupted in 1931. Surprise Lake's waters cascade through the crater wall to form Aniakchak Wild River.

Access Scheduled, then chartered airplane or floatplane.

Bering Land Bridge National Preserve

Box 220, Nome, AK 99762

(907) 443-2522

The preserve, on northwest Alaska's Seward Peninsula, is a remnant of the land bridge that connected Asia and North America some 13,000 years ago. Archeological resources abound, and large populations of migratory birds nest here.

Access Scheduled, then chartered aircraft.

Cape Krusenstern National Monument
Box 287, Kotzebue, AK 99752
(907) 442-3890

Archeological sites dating back some 4,000 years along 114 successive lateral beach ridges illustrate Eskimo communities of all known cultural periods in Alaska.

Access Scheduled aircraft, then chartered aircraft and boats.

**Gates of the Arctic
National Park and Preserve**
Box 74680, Fairbanks, AK 99707
(907) 456-0281

Jagged peaks, gentle arctic valleys, and numerous lakes characterize this park and preserve north of the Arctic Circle. Includes part of the Central Brooks Range, the northernmost extension of the Rocky Mountains. Contains all or part of several wild rivers: Alatna, John, Kobuk, Tinayguk, Noatak, and North Fork of the Koyukuk.

Access Scheduled, then chartered aircraft.

Kenai Fjords National Park
Box 1727, Seward, AK 99664
(907) 224-3874

The park is 10 miles from Seward. Contains one of the nation's four major ice caps—700-square-mile Harding Ice Field—coastal fjords, islands, and rich, varied rain forest. Home to sea lions, sea otters, and seals. Breeding grounds for tens of thousands of birds.

Access By air or highway, charter boat or aircraft.

Kobuk Valley National Park
Box 287, Kotzebue, AK 99752
(907) 442-3890

The park embraces the Kobuk River's central valley, north of the Arctic Circle. Wildlife includes brown and black bears, wolf, fox, and migrating caribou. The 25-square-mile Great Kobuk Sand Dunes rise above surrounding terrain. Contains Salmon Wild River.

Access Scheduled aircraft, then chartered aircraft or boats.

Lake Clark National Park and Preserve
701 "C" Street, Box 61, Anchorage, AK 99513
(907) 271-3751

Jagged peaks, granite spires, two active volcanoes and the 50-mile-long lake set in the Chigmit Mountains along Cook Inlet's western shore. The lake, fed by hundreds of waterfalls, provides important red salmon spawning ground. Contains Chilikadrotna, Mulchatna, and Tlikakila Wild Rivers.

Access Chartered aircraft.

Noatak National Preserve
Box 287, Kotzebue, AK 99752
(907) 442-3890

Protects the nation's largest untouched river basin and part of Noatak Wild River, with its 65-mile-long Grand Canyon. A transition zone and migration route for plants and animals between arctic and sub-arctic environments. Contains hundreds of archeological sites and bounteous wildlife populations.

Access Scheduled, then chartered aircraft.

**Wrangell-St. Elias
National Park and Preserve**
Box 29, Glennallen, AK 99588
(907) 822-5234

Chugach, Wrangell, and St. Elias Mountains converge here. This largest National Park System area adjoins Canada's Kluane National Park. Mountains, valleys, and river basins feature abundant wildlife.

Access By highway, then 4-wheel-drive vehicle or chartered aircraft.

Yukon-Charley Rivers National Preserve
Box 64, Eagle, AK 99738
(907) 547-2233

Contains 115 miles of the historic Yukon River, and the entire 88-mile Charley River basin. The Charley boasts outstanding white-water. Old cabins and relics recall the 1898 gold rush. Falcons nest in high bluffs.

Access Highway or scheduled aircraft, then chartered aircraft or boat.

Arizona

Canyon de Chelly National Monument

Box 588, Chinle, AZ 86503

(602) 674-5436

Ruins of Indian villages built between A.D. 350 and 1300 at the base of sheer red cliffs and in caves in canyon walls. Modern Navajo Indian homes and farms. Picnicking, campgrounds, scenic drive, ruins, pictographs, hiking on White House ruin, guided tours, museum.

Location From Gallup, N. Mex., northwest on U.S. 666 to N. Mex. 264 to U.S. 191 to Chinle.

Accommodations Meals, lodging, and jeep tours at Thunderbird Lodge at monument. Write to lodge at Box 548, Chinle, AZ 86503 for reservations.

Casa Grande National Monument

Box 518, Coolidge, AZ 85228

(602) 723-3172

Ruins of massive four-story building constructed of high-lime desert soil by Indians who farmed the Gila Valley 600 years ago. Day use area only. High summer temperatures. Visitor center, museum, guided tours, self-guiding trail, picnicking, private campground nearby.

Location Within the town of Coolidge, on Highway 87, halfway between Phoenix and Tucson.

Accommodations Meals and lodging in Coolidge and city of Casa Grande.

Chiricahua National Monument

Dos Cabezas Box 6500, Willcox, AZ 85643

(602) 824-3560

Varied rock formations created millions of years ago by volcanic activity. Chiricahua Mountains rise steeply from the desert like a forested island. Trails provide views of all park features. Visitor center, campgrounds, scenic drive, hiking, self-guiding trails, picnicking.

Location 36 miles southeast of Willcox, Ariz., off Rt. 186.

Accommodations Meals and lodging and commercial campground in Willcox. Small camping area in monument's Bonita Canyon.

Coronado National Memorial

Rural Route 1, Box 126, Hereford, AZ 85615

(602) 366-5515

Commemorates first European exploration of Southwest, by Francisco Vasquez de Coronado, 1540-42. View of part of route Coronado expedition used to enter present United States from Mexico. High summer temperatures. Hiking, exhibits, trails, picnicking, visitor center.

Location 22 miles south of Sierra Vista, Ariz., and 30 miles southwest of Bisbee, Ariz., off Route 92.

Accommodations Meals and lodging at Sierra Vista and Bisbee. Camping 18 miles west at Forest Service campgrounds at Parker Lake.

Fort Bowie National Historic Site

c/o Chiricahua National Monument

Dos Cabezas Box 6500, Willcox, AZ 85643

(602) 847-2500

Ruins of fort established 1862. Focal point of military operations against Geronimo and his band of Apaches. A walk-in and day use area only. Rugged 1.5-mile sand and gravel trail leads from parking lot to the site. Picnic tables at the site. Ruins of fort, small museum, hiking.

Location From Willcox on Interstate 10, drive 12 miles south on State Route 186 to graded road leading east to Apache Pass. Or from Bowie on Interstate 10, drive 12 miles south on a graded dirt road and bear west into Apache Pass.

Accommodations Meals and lodging at Bowie or Willcox. National Park Service campground 25 miles southwest at Chiricahua National Monument.

Hubbell Trading Post National Historic Site

Box 150, Ganado, AZ 86505

(602) 755-3475

Still-active trading post illustrates the influence of reservation traders on the Indian way of life. Indian crafts for sale, self-guiding trail, interpretive programs, weaving demonstrations.

Location On Navajo Indian Reservation, one mile west of Ganado, and 55 miles from Gallup, N. Mex.

Accommodations Meals and lodging at



Organ Pipe Cactus



Tumacacori

Window Rock, Ariz., 30 miles from Hubbell, off Ariz. 264. College of Ganado (limited motel units). Three Mission Restaurant.

Navajo National Monument
Tonalca, AZ 86044
 (602) 672-2366

Two of the most elaborate and best-preserved cliff dwellings in the Southwest: Betatakin, 135 rooms, and Keet Seel, 157 rooms. Both occupied during late 13th century by Pueblo peoples. Daily guided tours into the canyon/prehistoric sites late spring through early fall.

Limited to 20 people per tour. Self-guiding overlook trail, picnicking, camping, visitor center, exhibits, museum, campfire programs in summer, Navajo art and crafts shops.

Location Twenty miles northwest from Kayenta on Highway 160, turn north on Highway 564 for ten miles. Highway 564 ends at park boundary; not a through highway to Page.

Accommodations Meals and lodging in Kayenta.

Organ Pipe Cactus National Monument
Route 1, Box 100, Ajo, AZ 85321
 (602) 387-6849

Named for cactus species rare in the United States. Protects desert plants, animals, and natural features in segment of the Sonoran Desert, which stretches from northwestern Mexico to southeastern California. Contains traces of the historic trail, Camino del Diablo. Visitor center, interpretive programs, scenic drives and hikes. This area visited mostly during winter months when climate is more temperate.

Location At junction of Interstates 8 and 80, take State Route 85 south. Headquarters is 40 miles south of town of Ajo. From Tucson, take State Route 86 west to Route 85. Headquarters is 12 miles south of this junction.

Accommodations Campground 1.5 miles south of visitor center. Some accommodations in Lukeville and in Sonoita, Mexico. Accommodations in Ajo, 40 miles north.

Pipe Spring National Monument
Moccasin, AZ 86022
 (602) 643-7105

Historic fort and other structures built by Mormon pioneers. Homes, bunkhouses, work sheds, and corrals typical of 19th-century ranches. Tour of fort and grounds, picnicking.

Location Fifteen miles south of Fredonia, Ariz. Reached from U.S. 89 via Ariz. 398. From U.S. 91, Utah 15 and 17 connect with Utah 59 at Hurricane, Utah. Paved road leads to the monument from there.

Accommodations Meals and lodging in Fredonia and Hurricane.

Sunset Crater National Monument
Route 3, Box 149, Flagstaff, AZ 86001
(602) 527-7042

1,000-foot volcanic cinder cone. Formed A.D. 1064-1065, with lava flows and related igneous features. Cinders of Summit Crater give illusion of perpetual sunset. Volcanic crater, visitor center, self-guiding nature trail. Connected to Wupatki National Monument by paved road through Coconino National Forest. Forest Service campground across from visitor center.

Location From Flagstaff, take U.S. 89 north about 16 miles to monument entrance.

Accommodations Meals and lodging in Flagstaff.

Tonto National Monument
Box 707, Roosevelt, AZ 85545
(602) 467-2241

Well-preserved cliff dwelling occupied in 13th and 14th centuries by Solado Indians farming Salt River Valley. Most visitors come in winter, when climate is more temperate. The monument lies above 4,000 feet, however, and receives some summer breezes. Visitor center, Indian ruins, exhibits, self-guiding trails, picnic areas, camping in nearby Tonto National Forest. Day use area only.

Location From Phoenix, take U.S. 60-70 to Apache Junction, take State Route 88 north-east to Roosevelt. Monument turnoff is 2 miles southeast, in Roosevelt.

Accommodations Meals in Roosevelt. Meals and lodging 25 miles southeast at Globe.

Tumacacori National Monument
Box 67, Tumacacori, AZ 85640
(602) 398-2341

Ruins of 19th-century Spanish colonial mission community. Day use area only. Visitor center, self-guiding trails, ruins, museum, weekend craft demonstrations, picnicking. Favorable weather throughout the winter.

Location Exit 29 on Interstate 19, 19 miles north of Nogales and 45 miles south of Tucson.

Accommodations Meals available in nearby restaurants. Meals and lodging at Nogales, Rio Rico (8 miles), and Tucson. Forest Service campground at Pena Blanca Lake, 21 miles south and west of the monument.

Tuzigoot National Monument
Box 68, Clarkdale, AZ 86324
(602) 634-5564

Excavated ruins of large Indian pueblo that flourished in the Verde Valley between 1000 and 1400 A.D. Day use area only. Visitor center, ruins, Indian exhibits.

Location 48 miles southwest of Flagstaff, off U.S. 89A.

Accommodations Meals and lodging in Clarkdale and Cottonwood, 2 miles from the monument.

Walnut Canyon National Monument
Walnut Canyon Road, Flagstaff, AZ 86001
(602) 526-3367

Cliff dwellings in shallow caves under limestone ledges. Built by Pueblo Indians about 800 years ago. Access to cliff dwellings is a steep set of rugged steps. It is a hardy walk. Day use area only. Visitor center, cliff dwellings, self-guiding trail, picnic area.

Location Off U.S. 66, Interstate 40, 12 miles east of Flagstaff.

Accommodations Meals and lodging in Flagstaff.

Wupatki National Monument
HC33, Box 444A, Flagstaff, AZ 86001
(602) 527-7040

Ruins of masonry pueblos built by Sinagua and Anasazi Indian farmers between A.D. 100 and 1225. Part of complex prehistoric story of struggle for survival in a harsh climate. Visitor center, ruins, self-guiding trails, picnic area. Connected to Sunset Crater National Monument by paved road leading from Coconino National Forest. Forest Service campground 18 miles south, across from Sunset Crater visitor center.

Location Off U.S. 89, 30 miles north of Flagstaff.

Accommodations Meals and lodging in Flagstaff.

Arkansas

Arkansas Post National Memorial
Route 1, Box 16, Gillett, AR 72055
(501) 548-2432

Exhibits, visitor center, audiovisual program, historic walking tour, wildlife sanctuary, fishing, picnicking.

Location Arkansas Post is on Ark. 169, 7 miles south of Gillett via U.S. 165, and about 20 miles northeast of Dumas via U.S. 165.

Accommodations Meals and lodging in Gillett and Dumas.

Fort Smith National Historic Site
Box 1406, Fort Smith, AR 72902
(501) 783-3961

One of the first U.S. military posts in the Louisiana Territory. From 1817 to 1896, a center of authority for the untamed region to the west. Visitor center, self-guiding tour of fort, commercial campground nearby. Group tours can be arranged.

Location Downtown Fort Smith, on Rogers Avenue, between Second and Third Streets.

Accommodations Meals and lodging in Fort Smith.

Pea Ridge National Military Park
Pea Ridge, AR 72751
(501) 451-8122

Scene of major Civil War engagement west of the Mississippi, on March 7-8, 1862. Self-guiding auto tour of battlefield, visitor center, museum exhibits, picnic area, commercial campground one mile away, Army Corps of Engineers campground within 10 miles. Guided group tours can be arranged.

Location 98 miles north of Fort Smith on U.S. 62.

Accommodations Meals and lodging at Rogers, Ark., 10 miles southwest.

California

Devils Postpile National Monument
Three Rivers, CA 93271
(619) 934-2289, summer only

Hot lava cooled and cracked 900,000 years ago to form basalt columns 40 to 60 feet high. These resemble a giant pipe organ. Crossed by the John Muir Trail between Yosemite and Kings Canyon National Parks. Monument created from Inyo National Forest lands. Hiking, fishing, camping, horseback riding, picnicking, interpretive talks, small visitor center.

Location Reached by a 16-mile drive from U.S. 395. Shuttle bus operates from Minaret Summit to the monument in summer (nominal fee).

Accommodations Meals and lodging in Mammoth Lakes, 13 miles, or Reds Meadow, 4 miles.

John Muir National Historic Site
4202 Alhambra Avenue, Martinez, CA 94553
(415) 228-8860

John Muir House and adjacent Martinez Adobe commemorate Muir's contribution to conservation and literature. Guided house tours, audiovisual shows, lectures, picnicking. This is a day use area.

Location Martinez, California, San Francisco Bay Area.

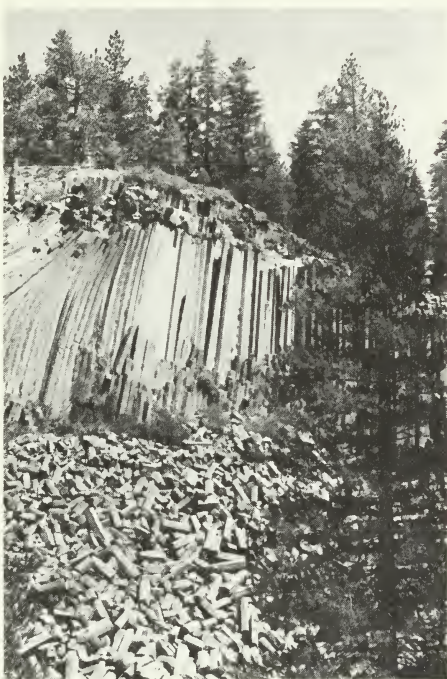
Accommodations Meals and lodging in Martinez.

Lava Beds National Monument
Box 867, Tulelake, CA 96134
(916) 667-2282

Unusual exhibits of volcanic activity, grassland, chaparral, and pine forest communities. Principal theater of Modoc Indian War, 1872-73. Abuts Tule Lake National Wildlife Refuge on north. Scenic Medicine Lake country nearby. Visitor center, hiking, exhibits, museum, nature trails, picnic area, campgrounds (May 1-October 1), cave explorations, summer interpretive programs. No concessioners. Bring film.

Location 30 miles south of Tulelake and 60 miles south of Klamath Falls, Oregon, off California Route 139.

Accommodations Meals and lodging in Tulelake.



Devils Postpile

Pinnacles National Monument
Paicines, CA 95043
 (408) 389-4578

Spire-like rock formations, 500 to 1,200 feet high, with caves and volcanic features. Exemplary Coast Range chaparral. Many colorful wildflowers in spring. Camping, picnicking, visitor center, interpretive talks, hiking and nature trails. Note: Caves may be closed temporarily.

Location East entrance 35 miles south of Hollister on Calif. Route 146. West entrance 11 miles east of Soledad on Calif. Route 146. State route is not a trans-park road. Rugged Gabilan Mountain Range forms principal park features and bisects road.

Accommodations Meals and lodging in Hollister on east, and King City, 30 miles southwest. Commercial campground on the east; short walk into National Park Service campground on the west.

Colorado

Bent's Old Fort National Historic Site
35110 Highway 194 East
La Junta, CO 81050-9523
 (303) 384-2596

Principal outpost of Anglo-American presence on the Southern Plains. A trading center for Indians and a significant fur-trading post on the Santa Fe Trail. Reconstructed adobe fort with rooms furnished in period style, self-guiding tour of the fort, archeological collection, living history interpretation, annual rendezvous re-enactment.

Location 8 miles east of La Junta and 15 miles west of Las Animas, Colo., on Colo. 194. La Junta served by Atchison, Topeka and Santa Fe Railroad. 68 miles east of Pueblo.

Accommodations Meals and lodging in La Junta and Los Animas, Colo.

Black Canyon of the Gunnison National Monument
Box 1648, Montrose, CO 81402
 (303) 240-6522

Sheer-walled canyon. Shadowed depths accentuate darkness of ancient rocks of obscure origin. Camping, fishing, hiking, nature trail, scenic overlooks.

Location 15 miles from Montrose, Colo., on Colo. 347.

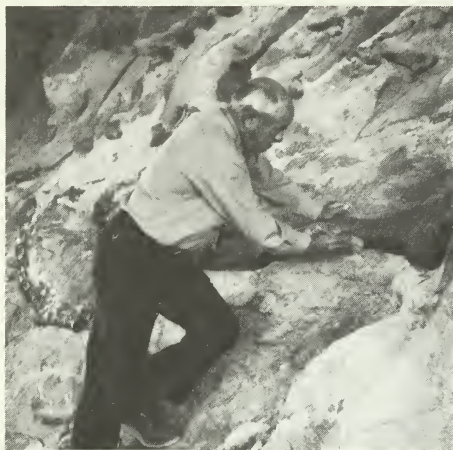
Accommodations Meals and lodging in Montrose.

Colorado National Monument
Fruita, CO 81521
 (303) 858-3617

Deep canyons, towering monoliths, strange rock formations, dinosaur fossils, and remains of a prehistoric Indian culture grace colorful sandstone country. Visitor center, camping, hiking, climbing, scenic overlooks.

Location The monument is 4 miles west of Grand Junction and 3½ miles south of Fruita, Colo. on Colo. 340.

Accommodations Meals and lodging in Grand Junction and Fruita, Colo.



Dinosaur



Hovenweep

Dinosaur National Monument
Box 210, Dinosaur, CO 81610
 (303) 374-2216

Spectacular canyons cut by Green and Yampa Rivers through upfolded mountains. Quarry contains fossil remains of dinosaurs and other ancient animals. Camping, visitor centers, fishing, backcountry camping, hiking, boat trips, campfire programs, exhibits, world-famous display of dinosaur fossils in quarry visitor center.

Location On Colorado-Utah border 20 miles north of Dinosaur, Colo. All dinosaur fossils

and all improved campgrounds are in quarry area 7 miles north of Jensen, Utah.

Accommodations Meals and lodging in Vernal, Utah, 14 miles.

Florissant Fossil Beds National Monument
Box 185, Florissant, CO 80816
 (303) 748-3253

Treasure of paleontological history preserved by volcanic ash. Among world's richest plant and insect fossils groupings. Also bird and mammal fossils. Nature trail, view of Pike's Peak, golden eagles nest in western part, old gold mining town of Cripple Creek to the south, self-guiding trails around fossil beds.

Location The monument is 35 miles southwest of Colorado Springs, Colo., via U.S. 24.

Accommodations Meals and lodging in Colorado Springs and Woodland Park.

Great Sand Dunes National Monument
Mosca, CO 81146
 (303) 378-2312

Among nation's largest and highest dunes. Deposited over thousands of years by south-westerly winds blowing through passes of lofty Sangre de Cristo Mountains. Visitor center, exhibits, hiking on the dunes, picnicking, camping, campfire programs in summer, naturalist walks, self-guiding trail.

Location Follow U.S. 160 east from Alamosa, Colo., to Colo. 150 and the monument.

Accommodations Meals and lodging in Alamosa.

Hovenweep National Monument
c/o Mesa Verde National Park, CO 81330
 (303) 529-4465

Six groups of towers, pueblos, and cliff dwellings built by pre-Columbian Indians. Two groups in Utah, four in Colorado. Camping, hiking, Indian ruins.

Location 45 miles from Cortez, Colo., on Utah-Colorado border. Dirt roads sometimes impassable in bad weather; check locally.

Accommodations Meals and lodging in Blanding and Bluff in Utah; in Cortez in Colorado.

District of Columbia

Frederick Douglass Home
1411 W Street, S.E.
Washington, DC 22020
(202) 426-5960

Cedar Hill, restored home of Frederick Douglass, outstanding 19th-century American black. Remarkable orator and writer, noted abolitionist and antislavery editor. Visitor center, exhibits, audiovisual program, restored home and furnishings, guided home tours.

Location Washington, D.C., 14th and W Streets, S.E.

Accommodations Meals and lodging in D.C. area.

Theodore Roosevelt Island
c/o George Washington Memorial Parkway
Turkey Run Park, McLean, Virginia 22101
(202) 285-2601

88-acre wilderness preserve memorializes President Theodore Roosevelt's contributions to conservation. Tours, interpretive programs, formal memorial with statue, self-guiding trails, aquatic life, bird and animal refuge.

Location In Potomac River in Washington, D.C. Reach parking area from northbound lanes of George Washington Memorial Parkway on Potomac's Virginia side. Footbridge connects island to Virginia shore.

Accommodations Meals and lodging in Washington, D.C., and northern Virginia.

Florida

Biscayne National Park
Box 1369, Homestead, FL 33090-1369
(305) 247-2044

On Florida's southern Atlantic coast, park embraces 175,000 acres, mostly water and living coral reefs. Contains well-sheltered section of Biscayne Bay, about 45 low islands, called "keys," and about 20 miles of mainland mangrove shoreline. Available by private boat or concessioner-operated tour boat: swimming, snorkeling, fishing, camping, picnicking, and hiking on nature trails. (Picnicking, fishing, interpretive activities on mainland.)

Location Park headquarters at Convoy Point, 9 miles east of Homestead, on S.W. 328 Street.

Accommodations Meals and lodging in Homestead.

De Soto National Memorial
75th Street, N.W., Bradenton, FL 33529
(813) 792-0458

Commemorates 16th-century Spanish explorer Hernando de Soto. Led first extensive exploration by Europeans of present southern United States (1539-1542). Visitor center, exhibits, audiovisual program, nature trail, living history program (December-April). Lowest visitation in summer.

Location On Tampa Bay 5 miles west of Bradenton; 40 miles south of Tampa, off State Route 64.

Accommodations Meals and lodging in Bradenton.

Fort Caroline National Memorial
12713 Fort Caroline Road
Jacksonville, FL 32225
(904) 641-7155

Overlooks site of French Huguenot Colony of 1564-65, second French attempt at settlement within present United States. Here, French and Spaniards began two centuries of European colonial rivalry in North America. Scale replica of fort, museum, self-guiding trail.

Location East of downtown Jacksonville, via Fla. 10.

Accommodations Meals and lodging in Jacksonville.

Georgia



Fort Jefferson



Ocmulgee

Fort Jefferson National Monument
c/o U.S. Coast Guard Base
Key West, FL 33040
(305) 247-6211

Largest of a ring of masonry coastal defense forts built in 19th century. Stands on an island in the Gulf of Mexico's Dry Tortugas group, named to warn mariners of no fresh water. During and after Civil War, fort used as federal military prison. Bird refuge, coral formations, marine life, underwater nature trail, camping, fishing, picnicking, self-guiding tour of fort.

Location 68 miles west of Key West. Accessible only by boat or air taxi from Key West area.

Accommodations No housing, water, meals, or supplies.

Andersonville National Historic Site
Andersonville, GA 31711
(912) 924-0343

Confederate prisoner-of-war camp. Commemorates sacrifices borne by American prisoners, not only in the Civil War, but also in all wars. Includes Andersonville National Cemetery. Information station, POW exhibit building, self-guiding tour of prison site, picnicking, summer programs include interpretive talks, walks, and torchlight tours.

Location 9 miles northeast of Americus.

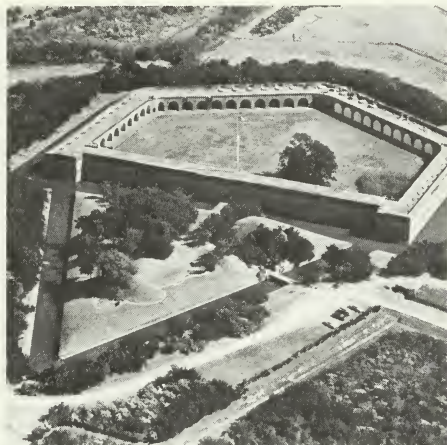
Accommodations Meals available in Andersonville; lodging in Americus and Montezuma.

Fort Frederica National Monument
Route 4, Box 286-C
St. Simons Island, GA 31522
(912) 638-3639

Built by Gen. James E. Oglethorpe during Anglo-Spanish struggle for present southeastern United States. Visitor center, museum exhibits, interpretive and audiovisual programs, self-guiding tour of townsite and fort.

Location On St. Simons Island, 12 miles from Brunswick, Ga. Can be reached via Brunswick-St. Simons toll causeway.

Accommodations Meals and lodging in Brunswick and on St. Simons Island. No picnic facilities at monument; picnic areas on St. Simons Island in Brunswick and Jekyll Island State Park.



Fort Pulaski

Fort Pulaski National Monument
Box 98, Tybee Island, GA 31328
 (912) 786-5787

Early 19th-century fort, whose bombardment by federal rifled cannon in 1862 first demonstrated the ineffectiveness of old-style masonry fortifications. Visitor center, museum exhibits, interpretive programs and displays, self-guiding tour, hiking, picnicking, fishing. Boat ramp and private campground nearby.

Location 13 miles east of Savannah, Ga., off U.S. 80.

Accommodations Meals and lodging in Savannah area.

Ocmulgee National Monument
1207 Emery Highway, Macon, GA 31201
 (912) 742-0447

10,000 years of American Indian heritage preserved here include platform mounds and ceremonial earthlodge abandoned about 1100 A.D. These Indians were an outpost of the Mississippian culture. Visitor center with archeological exhibits, guided tours, self-guiding trail. Summer program includes Indian handicraft demonstrations.

Location On east edge of Macon, Ga., off Interstate 16.

Accommodations Meals, lodging, and campgrounds in Macon.

Guam

War in the Pacific National Historical Park
Box FA, Agana, Guam 96910
 (671) 477-8528

Interprets events in the Pacific theater of World War II. Includes major historic sites associated with 1944 battle for Guam. Exemplifies island-hopping military campaign against the Japanese. Stell Newman Visitor Center, small museum, major invasion beaches.

Location Agana Harbor area.

Accommodations Resort hotels within 5 miles. Tamuning Bay area.

Idaho

Craters of the Moon National Monument
Box 29, Arco, ID 83213
 (208) 527-3257

Fissure eruptions, volcanic cones, craters, lava flows, caves, and other volcanic phenomena. Douglas-fir, limber pine, and sagebrush-grassland communities. Visitor center, picnicking, self-guiding trails, nature trail, naturalist activities. Museum depicts volcanic formations, plants, animals, and history of the park.

Location The monument is 18 miles southwest of Arco, on U.S. 20, 26, and 93.

Accommodations Meals and lodging available in Arco.

Nez Perce National Historical Park
Box 93, Spalding, ID 83551-0093
 (208) 843-2261

Comprises 24 historic sites spread over North Central Idaho. 20 are managed cooperatively with federal, tribal, state, and private agencies. Some sites relate to westward expansion, settlement, and the 1877 War. Others relate to Nez Perce religion and legends. Scenic views, natural formations, historic buildings, visitor center/museum with exhibits and movie, self-guiding facilities, and picnicking.

Location Park headquarters at Spalding, 11 miles east of Lewiston, on U.S. 95. Personal services at Kamiah Site in summer only.

Accommodations Meals and lodging in Lewiston and other communities.

Indiana

**George Rogers Clark
National Historical Park**
401 South Second Street
Vincennes, IN 47591
(812) 882-1776

Classic memorial stands on site of Fort Sackville, which frontier army under Clark captured from British in 1779. This won Old Northwest for the United States. Marble rotunda contains 7 large murals. Visitor center, movie version of Clark's campaign, landscaped grounds, view of the natural Wabash River, statues and markers. No camping or picnicking in the park, but facilities are available nearby.

Location Vincennes, at junction of U.S. Highways 50 and 41, southwestern Indiana.

Accommodations Meals and lodging in Vincennes.

Iowa

Effigy Mounds National Monument
Box K, McGregor, IA 52157
(319) 873-2356

Outstanding examples of Indian burial mounds in shapes of birds and other creatures. Visitor center, museum exhibits, audiovisual presentation, self-guiding trail, scenic views along 300-foot high bluff, trailside exhibits, hiking, guided group tours. State campgrounds and picnic areas nearby.

Location 4 miles north of McGregor and Marquette, Iowa, on Highway 76.

Accommodations Meals and lodging in McGregor.

Kansas



Fort Larned

Fort Larned National Historic Site
Route #3, Larned, KS 67550
(316) 285-3571

Fort protected traffic on Santa Fe Trail from 1859 to 1878. Key military post in Indian War of 1868-69. Served as Indian agency in 1860s. Nine historic military buildings: 5 have exhibits and furnished rooms open to public. Visitor center, audiovisual program, exhibits, history/nature trail, picnic area. Guided tours daily and living history programs on weekends in summer.

Location 7 miles west of Larned, Kans., on U.S. 156.

Accommodations Meals, lodging, and campgrounds in Larned and Great Bend, Kans.



Fort Scott National Historic Site
Old Fort Boulevard, Fort Scott, KS 66701
 (316) 223-0321

Army Post (1842-1853) guarded the permanent Indian frontier. Dispatched troops on expeditions to explore the West, protect Santa Fe Trail traffic, and fight in Mexican War. Served as Union supply base during Civil War (1861-1865). Twenty-one historic military buildings, 13 furnished and open to public. Visitor center, audiovisual program and exhibits, guided tours, living history demonstrations, interpretive programs and special events as scheduled. Small picnic area on site and private campgrounds nearby.

Location 90 miles south of Kansas City, on north edge of town of Fort Scott.

Accommodations Meals and lodging in Fort Scott.

Kentucky

Abraham Lincoln Birthplace
National Historic Site
Route 1, Hodgenville, KY 42748
 (502) 358-3874

Early Kentucky cabin symbolizes that in which Lincoln was born. Enclosed in granite and marble building on birthplace site. Visitor center, audiovisual program, exhibits, memorial building, picnic area, camping facilities nearby.

Location 3 miles south of Hodgenville, Ky., on U.S. 31E-Ky. 61.

Accommodations Meals and lodging in Hodgenville.

Big South Fork National River and Recreation Area A scenic portion of the Cumberland Plateau on the Kentucky-Tennessee border. See listing under Tennessee.

Cumberland Gap National Historical Park
Box 840, Middlesboro, KY 40965
 (606) 248-5766

Mountain pass of the Wilderness Road, explored by Daniel Boone. Main artery of the great trans-Allegheny migration for settlement of the Old West. Important military objective in Civil War. Visitor center, museum, scenic overlooks, Wilderness Road, self-guiding trails, campground, picnic area, hiking trails, privately-operated Cudjo Cave, restored Hensley settlement, peak where Kentucky, Tennessee, and Virginia meet.

Location Kentucky, Virginia, and Tennessee. Visitor center on U.S. 25E, one mile southeast of Middlesboro, Ky.

Accommodations Meals and lodging in Middlesboro and Cumberland Gap, Ky.

Maryland

Antietam National Battlefield
Box 158, Sharpsburg, MD 21782
(301) 977-1133

Scene of bloodiest single-day fight in the battle that ended Gen. Robert E. Lee's first invasion of North in 1862. Visitor center, exhibits, orientation movie, slide program, driving tour of battlefield, National Cemetery, fishing in Antietam Creek.

Location From Sharpsburg, Md., northeast along Md. 34 and Md. 65.

Accommodations Meals and lodging in Hagerstown, 14 miles north.

Clara Barton National Historic Site
5801 Oxford Road, Glen Echo, MD 20812
(301) 492-6246

Built in 1891, this 38-room home of American Red Cross founder was organization's headquarters for 7 years. A living history area. Restored home and furnishings, guided home tours, reservations can be made.

Location Glen Echo, Md., 5801 Oxford Road, adjacent to Glen Echo Park.

Accommodations Meals and lodging in Greater Washington, D.C. area. Glen Echo, Md. is 8 miles from downtown Washington.

Fort Washington Park
c/o National Capital Parks-East
1900 Anacostia Drive, S.E.
Washington, D.C. 20020
(301) 292-2112

On Maryland side of Potomac River, Fort Washington exemplifies early 19th-century coastal defense. Occupies site of earliest fortification erected for defense of National Capital. Altered only slightly since 1824. Fort, park with picnic sites, museum, demonstration of the heavy artillery uniform of the 1860s, with a firing of muskets, artillery demonstrations.

Location Oxon Hill, Md., suburb of Washington, D.C.

Accommodations Meals and lodging in Washington area.

Hampton National Historic Site
535 Hampton Lane, Towson, MD 21204
(301) 823-7054

Includes one of the largest and most ornate mansions of post-Revolutionary period (1790), with complex of historic outbuildings, English formal gardens, and specimen trees. Guided house tours, summer grounds and garden tours, exhibits, seasonal programs.

Location Take Interstate 695 (Baltimore Beltway) to exit 27 North, and follow directional signs.

Accommodations Tearoom on site serves luncheon. Other meals and lodging nearby in Towson.

Piscataway Park
c/o National Capital Parks-East
1900 Anacostia Drive, S.E.
Washington, DC 20020
(301) 472-9227

Preserves the tranquil view of the Potomac River's Maryland shore, as seen from Mount Vernon. National Colonial Farm, an agricultural-historical project of Accokeek Foundation, provides an exhibit and demonstration of agricultural methods, crops, and livestock of a modest tidewater farm of the mid-18th century. Farm animals, woodland foot trail, picnic facilities in Saylor Memorial Grove, fishing pier, visitor center.

Location Park is accessible from the Capital Beltway (Interstate 495) exit 3-A. Go south on Indian Head Highway (Route 210) for 10 miles to Bryan Point Road, then west 4 miles to Potomac River.

Accommodations Meals and lodging available throughout the Prince George's County, Maryland, suburbs of Washington.

Massachusetts

Adams National Historical Site
135 Adams Street, Quincy, MA 02269
(617) 773-1177

The Old House, built in 1731, was purchased by John and Abigail Adams in 1787. Beautiful garden and magnificent library. Tours of The Old House daily in season; gardens and grounds are self-guiding walks. Park open April 19 to November 10. Presidential birthplaces a few miles away also have daily tours.

Location Adams Street and Newport Avenue, just off Quincy Center.

Accommodations Meals and lodging in the Quincy and Greater Boston Areas.

Frederick Law Olmsted
National Historic Site
99 Warren Street, Brookline, MA 02146
(617) 566-1689

"The Father of Landscape Architecture in America" spent some of his busiest years here at Fairsted, which he purchased in 1883. Home and studio still hold thousands of drawings, maps, models, and photographs pertaining to Olmsted's work. House tours show Olmsted's work areas and various projects. Park open Friday, Saturday, and Sunday from noon to 4:30 p.m.

Location Just off Route 9 at Warren and Dudley Streets in Brookline, 4 miles from downtown Boston.

Accommodations Meals and lodging in Greater Boston Area.

John Fitzgerald Kennedy
National Historic Site
83 Beals Street, Brookline, MA 02146
(617) 566-7937

Birthplace and early boyhood home (1917-20) of the 35th President of the United States. Kennedy home; walking tour of neighborhood; audio and self-guiding home tours.

Location 83 Beals Street, Brookline, Mass.

Accommodations Meals and lodging in Greater Boston Area.

Longfellow National Historic Site
105 Brattle Street, Cambridge, MA 02138
(617) 876-4491

Poet Henry Wadsworth Longfellow's home at Cambridge, 1837-82. Also Gen. George Wash-

ington's headquarters during the siege of Boston, 1775-76. Restored home and gardens.

Location 105 Brattle Street, Cambridge.

Accommodations Meals and lodging in Cambridge and Greater Boston Area.

Salem Maritime National Historic Site
Custom House, Derby Street
Salem, MA 01970
(617) 744-4323

Young America's maritime history comes alive in this beautiful harborside setting. The Custom House, Derby House, and West India Goods Store re-create the bustling, late-1700s Derby Wharf scene. Historic Salem abounds with tours and sights. House of Seven Gables, The Witch Museum, and Pickering Wharf Complex. Derby and Custom House tours.

Location Salem Center, off Route 1A, adjacent to Pickering Wharf.

Accommodations Greater Boston's North Shore area—coastal towns of Salem, Beverly, and Marblehead.

Saugus Iron Works National Historic Site
244 Central Street, Saugus, MA 01906
(617) 233-0050

Reconstructed 17th-century iron works re-create the historic process of water wheels, bellows, and forge hammer. Ironmaster's house, reconstructed furnace, forge, rolling and slitting mill, museum.

Location Just east of U.S. 1, about 10 miles north of Boston, in Saugus, Mass.

Accommodations Meals and lodging in Greater Boston Area.

Springfield Armory National Historic Site
One Armory Square, Springfield, MA 01105
(413) 734-6477

Includes Commandant's Quarters and Master Armorer's Home. Main Arsenal holds one of the world's largest collections of small arms. Area includes historic Armory Square and Federal Square. Tours of Main Arsenal and houses. Walking, self-guiding tours of the Arsenal and Federal Square area.

Location Entrance to park off Federal Street; accessible from Armory Street via Interstate 291 or State Street via Interstate 91.

Accommodations Greater Springfield Area.

Michigan



Pictured Rocks

Pictured Rocks National Lakeshore
P.O. Box 40, Munising, MI 49862
(906) 387-2607

Superlative scenic area on Lake Superior. Multicolored sandstone cliffs, broad beaches, sand dunes, waterfalls, inland lakes, ponds, marshes, hardwood and coniferous forests, and numerous birds and other animals. Visitor centers with exhibits, campgrounds, hiking, wilderness camping, boat tours, fishing, and swimming. Winter activities: Cross-country skiing, snowshoeing, and snowmobiling.

Location In the Upper Peninsula of Michigan, southeast of Marquette on M-28.

Accommodations Meals and lodging available in Munising and Grand Marais.

Sleeping Bear Dunes National Lakeshore
400 Main Street, Frankfort, MI 49635
(616) 352-9611

Beaches, massive sand dunes, forests, lakes, two offshore islands, and Lake Michigan shore. Visitor center, exhibits, maritime museum, hiking, canoeing, boating, fishing, birdwatching, wilderness camping, cross-country skiing.

Location North of Frankfort, Mich., on Mich. 22, on shores of Lake Michigan.

Accommodations Meals and lodging in Frankfort and Glen Arbor, Honor, Beulah.

Minnesota



Voyageurs

Grand Portage National Monument
Box 666, Grand Marais, MN 55604
(218) 387-2788

Gateway to the northern plains and woodlands for explorers and traders. Preserves the strategic 8.5-mile Grand Portage and the Lake Superior post (1778-1803) of the North West Company. Reconstructed fur trade post includes the Great Hall of 1797, operating kitchen and pack warehouse housing three birchbark canoes. Hiking trails, tours, exhibits, audiovisual programs, and Chippewa craft demonstrations.

Location Off U.S. 61, 36 miles northeast of Grand Marais, Minn., on the Grand Portage Chippewa Reservation.

Accommodations Meals and lodging in Grand Portage and Grand Marais.

Pipestone National Monument
Box 727, Pipestone, MN 56164
(507) 825-5463

Famed quarry for Indian ceremonial peace pipe materials. Visitor and cultural center, museum exhibits, audiovisual program, upper midwest Indian cultural center, interpretive programs, self-guiding trail, demonstrations of Indian pipes being made from red pipestone, beadmaking, occasional crafts displays.

Location Pipestone, Minn., on U.S. 75,



Missouri



George Washington Carver

Minn. 23, 30, near north boundary of Pipestone.

Accommodations Meals and lodging in Pipestone.

Voyageurs National Park

P.O. Box 50, International Falls, MN 56649

(218) 283-9821

Forested lake country along Minnesota's northern border offers wilderness experience in historical setting—the world of the French-Canadian voyageurs. Fishing, swimming, waterskiing, and bird watching. Motor boat, houseboat, and canoe rentals, and naturalist-guided boat tours and evening programs. Ice fishing, Nordic skiing, and snowmobiling in winter. Private and state campgrounds nearby. *Location* From Duluth, Minn., follow Route 53 north to park.

Accommodations Resort, motel, and hotel facilities in International Falls, Kabetogama Lake, Ash River, and Crane Lake.

George Washington Carver

National Monument

Box 38, Diamond, MO 64840

(417) 325-4151

Site of birthplace and childhood home of famous black scientist. Landmarks include the spring, a grove of trees, and Carver family graves. Self-guiding trail, visitor center, birthplace cabin, Carver family home, limited picnic facilities, private campground nearby.

Location 3 miles from Diamond, Mo. On County Hwy. V, 65 miles west of Springfield, Mo. Interstate 44 is 9 miles north of Diamond.

Accommodations Meals and lodging in Diamond and Joplin, Mo.

Wilson's Creek National Battlefield

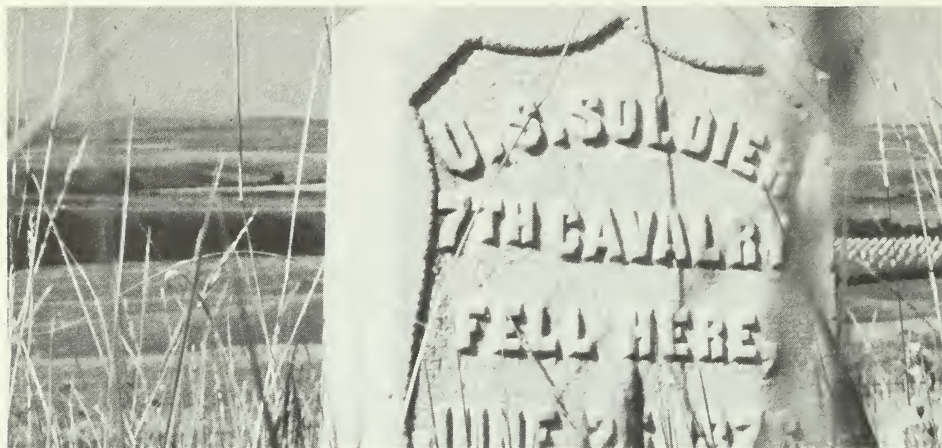
521 N. Highway 60, Republic, MO 65738

(417) 732-2662

Site of Civil War battle, August 10, 1861, for control of Missouri. Visitor center, museum, film, fiber optic map, self-guiding driving tour through the battlefield, interpretive signs, foot trail departure points, picnicking.

Location 3 miles east of Republic and 10 miles southwest of Springfield, off U.S. 60 via Mo. M and ZZ.

Accommodations Meals and lodging in Springfield.



Custer Battlefield

Big Hole National Battlefield
Box 237, Wisdom, MT 59761
(406) 689-3155

Site of turning point in Indian War of 1877, between Nez Perce and U.S. 7th Infantry. Visitor center, museum, exhibits, self-guiding trail through battlefield, picnicking. Forest Service and private campgrounds nearby.

Location On Mont. 43, 10 miles west of Wisdom.

Accommodations Meals and lodging in Wisdom.

Bighorn Canyon National Recreation Area
Box 458, Fort Smith, MT 59035
(406) 666-2412

Yellowtail Dam on the Bighorn River creates a 71-mile-long reservoir that extends 47 miles through spectacular Bighorn Canyon. The Crow Indian Reservation borders much of the area. Boating, camping, picnicking, fishing, hunting, boat rentals.

Location From Hardin, Mont., follow Mont. 313 to Yellowtail Dam, 96 miles southeast of Billings.

Accommodations Meals and lodging in Lovell, Wyo., and in Hardin and Fort Smith.

Custer Battlefield National Monument
P.O. Box 39, Crow Agency, MT 59022
(406) 638-2622

In the famous battle of the Little Big Horn, June 25-26, 1876—between 5 companies of the Seventh U.S. Cavalry and the Sioux and Cheyenne Indians—Lt. Col. George A. Custer and about 268 of his force were killed. Visitor center, National Cemetery, Custer Hill, Battle Ridge, museum exhibits, interpretive programs. Local and private campgrounds nearby, picnicking outside the park area.

Location 17 miles from Hardin, Mont., via Interstate 90, 70 miles east of Billings.

Accommodations Meals and lodging in Hardin.

Grant-Kohrs Ranch National Historic Site
Box 790, Deer Lodge, MT 59722
(406) 846-2070

A complete cattle ranch headquarters of the type operated in the West between 1850 and 1910. Elegant Victorian ranch house, bunkhouse, granaries, carriage sheds, with early ranch implements, wagons, sleighs. Visitor contact station, exhibits, guided tours, ranching demonstrations, active blacksmith, horse-drawn vehicles. Summer programs re-create late 19th-century ranch activities.

Location At the north edge of Deer Lodge, Mont., on Interstate 90.

Accommodations Meals and lodging in Deer Lodge.

Nebraska

Agate Fossil Beds National Monument
c/o Superintendent, Scotts Bluff National
Monument, Box 427, Gering, NE 69341
(308) 668-2211

Well-known quarries—one open for public display—contain numerous, concentrated, well-preserved Miocene mammal fossils. Represent an important chapter in mammalian evolution. Visitor center, fossil exhibits, self-guiding trail to area of exposed fossils.

Location Off Nebr. 29, near Agate, Nebr. Harrison, Nebr., is 30 miles to the north.

Accommodations Meals and lodging in Harrison.

Homestead National Monument of America
Route 3, Beatrice, NE 68310
(402) 223-3514

Site of one of the first claims filed under the Homestead Act of 1862. Includes Freeman School. Visitor center, exhibits, restored cabin and schoolhouses, self-guiding trail, guided tours arranged for groups, home-style grist mill for grinding corn available for visitors to operate. Local and state campgrounds nearby.

Location Off Nebr. 4, 4.5 miles northwest of Beatrice, 50 miles south of Lincoln, Nebr.

Accommodations Meals and lodging in Beatrice.

Scotts Bluff National Monument
Box 427, Gering, NE 69341
(308) 436-4340

This landmark of towering bluffs was passed by tens of thousands of westward-bound pioneers on the Oregon Trail, 1843-1869. In pass through bluffs, ruts are still visible. Visitor center, exhibits, museum, Oregon Trail ruts, covered wagons, living history demonstrations, interpretive programs, self-guiding trail, bicycle trail. Camping and picnicking nearby.

Location 3 miles west of Gering, on Nebr. 92.

Accommodations Meals and lodging in Gering and Scottsbluff (5 miles).

Nevada

Lehman Caves National Monument
Baker, NV 89311
(702) 234-7331

Limestone caverns honeycombed by tunnels and galleries decorated with stalactites and stalagmites. Monument surrounded by Humboldt National Forest. Lies on east side of 6,800-foot Mt. Wheeler. Guided tour of cave, picnicking, concessioner services. Camping in adjacent Humboldt National Forest.

Location At terminus of State Highway 488. From U.S. 6 and 50, take State Route 487 south to Highway 488 west.

Accommodations Food service and gift shop. Meals and lodging in Baker, 5 miles.

New Hampshire

Saint-Gaudens National Historic Site
RR#2, Box 73, Cornish, NH 03745
(603) 675-2175

Memorial to American sculptor, Augustus Saint-Gaudens. Contains his home, Aspet, and studios and gardens. Dramatic view of Mount Ascutney across Connecticut River. Home, Little Studio, new gallery, historic stables, cooperating association-sponsored Sunday concerts and art exhibitions, sculptor-in-residence in summer, nature trails. House and studios closed October to May.

Location Off N.H. 12A in Cornish.

Accommodations Meals and lodging in surrounding area.

New Jersey

Edison National Historic Site
Main St. and Lakeside Ave.
West Orange, NJ 07052
(201) 736-0550

Buildings and equipment used for experiments by Thomas A. Edison. Library, papers, and models commemorate important phase of nation's technological progress. Glenmont, Edison's 23-room house, furnished as he and his family lived in it. Guided tours at laboratory, exhibits, old movies, library, world's first movie studio, Glenmont Home tour.

Location Lakeside Avenue and Main Street, West Orange.

Accommodations Meals and lodging nearby.

New Mexico

Aztec Ruins National Monument

Box U, Aztec, NM 87410

(505) 334-6174

Ruins of large Pueblo Indian community with 12th-century buildings of masonry and timber. Misnamed by early American settlers. Visitor center, museum, native crafts exhibits, self-guiding tours, local campground near monument, picnicking.

Location Outskirts of small northwestern New Mexico city of Aztec.

Accommodations Meals and lodging in Aztec.

Capulin Mountain National Monument

Capulin, NM 88414

(505) 278-2201

Lone symmetrical cinder cone rising above northeastern New Mexico plain, landmark for pioneers on Cimarron cutoff of Santa Fe Trail. Geologically young (10,000 years) volcano. Grassland, forest, wildflowers. Visitor center, exhibits, picnicking, self-guiding nature trails, handicapped access. Private campgrounds nearby.

Location Entrance on N. Mex. 325, 3 miles north of town of Capulin.

Accommodations Meals and lodging in nearby Capulin, Des Moines, Clayton, and Raton, N. Mex.

Chaco Culture National Historical Park

Star Route 4, Box 6500

Bloomfield, NM 87413

(505) 786-5384

Major Indian ruins unsurpassed in the United States. Represent highest point of Pueblo pre-Columbian civilization. Hundreds of smaller ruins. Visitor center, campground, museum, self-guiding trails, hiking, conducted tours, evening programs.

Location N. Mex. 57 in northwestern New Mexico, 64 miles south of Aztec, N. Mex.

Accommodations Meals and lodging in Aztec.

El Morro National Monument

Ramah, NM 87321

(505) 783-5132

Soft sandstone of monolithic Inscription Rock bears hundreds of inscriptions: 17th-century

Spanish explorers, 19th-century American emigrants and settlers. Also pre-Columbian petroglyphs. Visitor center, self-guiding trail, wayside exhibits, picnicking, camping.

Location 58 miles southeast of Gallup, N. Mex., via N. Mex. 32 and 53.

Accommodations Meals and lodging in Grants and Gallup.

Fort Union National Monument

Watrous, NM 87753

(505) 425-8025

100 acres of adobe ruins. Remnants of Southwest's largest frontier fort and supply depot, active 1851-91 as Santa Fe Trail guardian. Key role in Indian Wars and Confederate defeat at Glorieta Pass. Trail ruts still visible on prairie here. Visitor center, museum, self-guiding trail through ruins, picnic area.

Location 90 miles north of Santa Fe via Interstate 25 and New Mexico 477.

Accommodations Meals and lodging in Las Vegas, N. Mex., 26 miles south.

Gila Cliff Dwellings National Monument

Route 11, Box 100, Silver City, NM 88061

(505) 534-9344

Well-preserved cliff dwellings in natural cavities on face of overhanging cliff. Visitor center, hiking, self-guiding trails, guided pack trips. Forest Service and local campgrounds nearby.

Location 44 miles north of Silver City, N. Mex. via N. Mex. 15.

Pecos National Monument

P.O. Drawer 11, Pecos, NM 87552

(505) 757-6414

Foundations of 17th-century mission church praised in Spanish writings. Ruins of 18th-century church. Remains of Pecos Pueblo that housed 2,000 Indians. Restored kivas. Visitor center, museum exhibits, self-guiding ruins trail, introductory film, summer cultural demonstrations.

Location 25 miles southeast of Santa Fe, via Interstate 25.

Accommodations Meals and lodging in Pecos and Santa Fe.



Fort Union

Salinas National Monument
Box 496, Mountainair, NM 87036
 (505) 847-2770

Magnificent ruins of four major mid-17th-century stone Franciscan churches. Walls to 40 feet high. 3 large Pueblo Indian villages (1100 A.D. to 1670s) testify to human ability to evolve in marginal environments. Encompasses former Gran Quivira, Abo, and Quarai State Monuments. Visitor centers, museum exhibits, self-guiding tours, 10- and 40-minute films, picnicking.

Location 75 miles southeast of Albuquerque, N. Mex., off U.S. 60 and N. Mex. 14.

Accommodations Meals and lodging at Mountainair.

New York

Castle Clinton National Monument
c/o NPS Manhattan Sites
26 Wall Street, New York, NY 10005
 (212) 344-7220

Built 1808-11, served first as New York Harbor defense, then promenade and entertainment center, and immigration depot for 8 million people entering nation, 1855-90. Structure being restored to reflect both immigration and promenade eras. Will serve as amphitheater for cultural activities in the New York City area.

Location In Battery Park in New York City.

Accommodations Meals and lodging in New York City.

Eleanor Roosevelt National Historic Site
249 Albany Post Road
Hyde Park, NY 12538
 (914) 229-9422

Mrs. Roosevelt's beloved retreat, Val-Kill. Home and stone cottage set among trees and ponds. Planned shuttle bus to site from FDR Home. Guided tours of stone cottage and Val-Kill home/Depression factory.

Location Entrance off Rt. 9G in Hyde Park. Site about 3 miles from Franklin Roosevelt Home-Library on Rt. 9 via St. Andrew's Road. Off-season personal vehicle parking only; summer-fall bus shuttle.

Accommodations Meals and lodging along Rts. 9 and 9G.

Federal Hall National Memorial
c/o NPS Manhattan Sites, 26 Wall Street
New York, NY 10005
 (212) 264-8711

Graceful 1842 building on site of original Federal Hall, where the Stamp Act Congress convened, 1765; the Second Continental Congress met, 1785; Washington took the oath as first U.S. President, and Bill of Rights was adopted, 1789; and where John Peter Zenger's trial, testing freedom of the press, was held in 1735. Museum, motion picture, displays, audiovisual exhibits.

Location 26 Wall Street, New York City.

Accommodations Meals and lodging in New York City.

Fort Stanwix National Monument
112 East Park Street, Rome, NY 13440
(315) 336-2090

The August, 1777, American stand here helped repulse British invasion from Canada. Site of Treaty of Fort Stanwix, 1768, with the Iroquois. Accurately reconstructed 18th-century fort, living history program May-September, guided fort tours.

Location Downtown Rome, at intersection of State Routes 26, 46, 49, 69, and 365.

Accommodations Meals and lodging in Rome.

General Grant National Memorial
c/o NPS Manhattan Sites
26 Wall Street, New York, NY 10005
(212) 666-1640

Largest mausoleum in America holds remains of General and President Ulysses S. Grant and his wife Julia. "I cannot spare this man—he fights," President Abraham Lincoln said of him. President Grant signed act establishing the first national park, Yellowstone, in 1872. Self-guiding tours, pleasant walks in surrounding Riverside Park.

Location Riverside Drive and 122nd Street, and Henry Hudson Parkway, overlooking Hudson River.

Accommodations In New York City, Upper Manhattan area.

Hamilton Grange National Memorial
c/o NPS Manhattan Sites
26 Wall Street, New York, NY 10005
(212) 283-5154

The Grange, home of Alexander Hamilton, American statesman and first U.S. Secretary of the Treasury. Guided house tour, exhibits.

Location At Convent Avenue and West 141st Street. Can be reached by 8th Avenue IND subway to West 145th Street.

Accommodations Meals and lodging in New York City.

Martin Van Buren National Historic Site
P.O. Box 545, Route 9H
Kinderhook, NY 12106
(518) 758-9689

The Lindenwald, estate of eighth President, Martin Van Buren, the first President born in America. He grew up in this rural, eastern New York State village. Built in 1797, house belonged to life-long friends, the Van Ness family. In 1839, while President, Van Buren bought it and engaged architect Richard Upjohn to design additions and alterations. Guided tours of house, self-guiding walks on grounds. Van Buren gravesite in nearby Kinderhook Village.

Location Off rural Route 9H south of Kinderhook Village.

Accommodations Small towns nearby. Traveler services on nearby New York State Thruway and Taconic Parkway.

Sagamore Hill National Historic Site
Box 304, Cove Neck Road
Oyster Bay, NY 11771
(516) 922-4447

Estate of Theodore Roosevelt from 1885 until his death in 1919. Original furnishings. Guided tours of home and garden.

Location Oyster Bay, N.Y., end of Cove Neck Road, 25 miles from New York City, on Long Island.

Accommodations Meals and lodging on Long Island.

Saratoga National Historical Park
RD 2, Box 33, Stillwater, NY 12170
(518) 664-9821

Scene of American victory over British in 1777; turning point of Revolution and a decisive battle in world history. Maj. Gen. Phillip Schuyler's country home. Visitor center, exhibits, self-guiding tour of battlefield, Schuyler Home.

Location 30 miles north of Albany, N.Y., on U.S. 54 and N.Y. 32.

Accommodations Meals and lodging in Schuylerville, N.Y.

Theodore Roosevelt Birthplace
National Historic Site
c/o NPS Manhattan Sites
26 Wall Street, New York, NY 10005
(212) 260-1616

Birthplace in 1858 of 26th President of United States. Guided tour of furnished Roosevelt

North Carolina

family home, museum, movies, video tapes.
Location 28 E. 20th Street, New York City.
Accommodations Meals and lodging in New York City.

**Theodore Roosevelt Inaugural
National Historic Site**
641 Delaware Avenue, Buffalo, NY 14202
(716) 884-0095

Ansley Wilcox House, where Teddy Roosevelt was sworn in as 26th President, has served as commandant's home, living quarters for famous and successful Buffalo citizens, and as a restaurant. Demolition plans in 1960s were curbed by citizens' campaign. Wilcoxes lived here until 1930s. Guided and self-guiding house tours.

Location North Buffalo on Delaware Avenue near North Street. Reached from Niagara Thruway, Main Street, or Franklin Street.
Accommodations In Greater Buffalo Area.

Women's Rights National Historical Park
P.O. Box 70, Seneca Falls, NY 13148
(315) 568-2991

Focuses on women's rights movement and founders. Bostonian Elizabeth Cady Stanton and friends held famous 1948 convention here to publicize long-standing injustices to women. Sites scattered around Seneca Falls Historic District, which encircles Van Cleef Lake. Visitor center exhibits, Stanton House tours.

Location Visitor Center at 116 Fall Street near State Street, in center of Historic District. Stanton Home at 32 Washington Street. Park near junction of Rts. 414 and 20. New York State Thruway Exit 41 is about 15 miles from park.

Accommodations Small towns in the Finger Lakes section of Upstate New York.



Cape Lookout

Cape Lookout National Seashore
Box 690, Beaufort, NC 28516
(919) 728-2121

Protects undeveloped barrier island environments extending 50 miles between Portsmouth Village and Cape Lookout. Extensive beaches and salt marshes, low dunes, historic Portsmouth, and the 1859 Cape Lookout lighthouse. Surf fishing, shell collecting, boating, lighthouse history talks, naturalist-led walks, hunting, hiking, primitive camping.

Location Visitor center off U.S. 70 on Harkers Island. Seashore reached only by concessioner-operated ferry from Harkers Island, Davis, Atlantic, or Ocracoke.

Accommodations Meals and lodging in Beaufort, Morehead City, and Atlantic Beach.

Carl Sandburg Home National Historic Site
Box 395, Flat Rock, NC 28731
(704) 693-4178

The picturesque 250-acre farm of celebrated poet and Lincoln biographer, Carl Sandburg, includes house, barns, and other buildings, surrounded by rolling pastures, mountainside woods and lakes, and flowering gardens. Information center, self-guiding tours, picnicking, guided tours of Sandburg Home, special interpretive programs, farm animals.

Location 3 miles south of Hendersonville,



Carl Sandburg Home



Knife River Indian Villages

N.C.; 26 miles south of Asheville, N.C., via Interstate 26 or U.S. 25.

Accommodations Meals and lodging in Hendersonville.

Fort Raleigh National Historic Site
Rt. 1, Box 675, Manteo, NC 27954
(919) 473-5772

Site of first English attempt to colonize New World, during 1580s. Home of Lost Colony, whose fate remains a mystery. Visitor center, exhibits, movie, self-guiding trails, reconstructed earthen fort, and interpretive programs in summer.

Location 3 miles north of Manteo on U.S. 64-264.

Accommodations Meals and lodging in Manteo.

Moore's Creek National Battlefield
Box 69, Currie, NC 28435
(919) 283-5591

Scene of February 27, 1776 battle between North Carolina Patriots and Loyalists. Patriot victory advanced revolutionary cause in South, with North Carolina becoming first colony to vote independence. Visitor center, exhibits, self-guiding tours, picnicking.

Location 23 miles northwest of Wilmington, N.C., via U.S. 421 and N.C. 210.

Accommodations Meals and lodging in Wilmington.

Fort Union Trading Post
National Historic Site
Buford Route, Williston, ND 58801
(701) 572-9083

Foundation ruins of largest, most imposing 19th-century trading post on Missouri River. Reconstruction planned; authentic setting preserved. Visitor center, exhibits, guided tours, slide shows.

Location On County Road 4, off U.S. 2, 25 miles southwest of Williston.

Accommodations Meals and lodging in Williston. Camping at Fort Buford State Historic Site.

Knife River Indian Villages
National Historic Site
RR 1, P.O. Box 168, Stanton, ND 58571
(701) 745-3309

Remnants of historic and prehistoric Indian villages, last occupied 1845 by the Hidatsa, contain array of Plains Indian culture artifacts. Visitor contact station, interpretive tours and exhibits, picnicking.

Location 3 miles north of Stanton.

Accommodations Limited meal and lodging services in nearby Stanton, Beulah, and Washburn.

Ohio

Mound City Group National Monument
16062 State Route 104
Chillicothe, OH 45601
(614) 774-1125

Large group of mounds built 200 B.C. to 500 A.D. by Indians, primarily as a burial place. Visitor center, exhibits, self-guiding tour, guided tours in summer. State, private, and Army Corps of Engineers campgrounds nearby.

Location 3 miles north of Chillicothe via State Route 104. 45 miles south of Columbus via U.S. 23.

Accommodations Meals and lodging in Chillicothe.

**Perry's Victory and International
Peace Memorial**
P.O. Box 549, Put-in-Bay, OH 43456
(419) 285-2184

Memorial near site where Commodore Oliver H. Perry won greatest naval battle of War of 1812; World's most massive Doric columns. Observation platform. State and private campgrounds, picnicking nearby.

Location 39 miles from Toledo, on South Bass Island in Lake Erie, about 4 miles from mainland. Reached by autoferry from Catawpa Point and Port Clinton. Air service from Port Clinton airport.

Accommodations Meals and lodging on South Bass Island and on mainland within 10 miles of ferry dock.

Oregon

Fort Clatsop National Memorial
Route 3, Box 604-FC, Astoria, OR 97103
(503) 861-2471

Lewis and Clark Expedition wintered here in 1805-6. Reconstruction of fort site, exhibits, audiovisual programs, self-guiding trails, summer costumed interpretation of Lewis and Clark Expedition—flintlock rifle demonstrations, candle-making, dressing skins, making buckskin clothing, building canoes. Picnicking and state and private campgrounds nearby.
Location 5 miles southwest of Astoria; on U.S. 101, 96 miles northwest of Portland.

Accommodations Meals and lodging in Astoria.

John Day Fossil Beds National Monument
420 W. Main, John Day, OR 97845
(503) 575-0721

Area records last 40 million years of Age of Mammals. Monument has three separate sections. Streams and mountains. Fishing, trails, picnicking, visitor center, overlooks, wayside exhibits.

Location Headquarters at John Day. Visitor center 40 miles west near Dayville.

Accommodations Food and lodging in nearby communities.

Oregon Caves National Monument
19000 Caves Highway
Cave Junction, OR 97523
(503) 592-2100

Poet Joaquin Miller called these caves "The Marble Halls of Oregon." Passages in limestone with intricate flowstone formations. Surrounded by virgin forests of Siskiyou Mountains. Guided cave tour, information station. Campground in Siskiyou National Forest 8 miles on Ore. 46.

Location 20 miles east of Cave Junction on Ore. Route 46; 50 miles south of Grants Pass.

Accommodations Meals and lodging June 11 through September 4, write Oregon Caves Chateau, Box 128, Cave Junction, OR 97523. Food service and child care. Other meals and lodging in Cave Junction.

Pennsylvania

**Allegheny Portage Railroad
National Historic Site**
Box 247, Cresson, PA 16630
(814) 886-8177

Traces and structures of Allegheny Portage Railroad, built 1831-34. Lifted passengers and cargoes of Pennsylvania canal boats over Allegheny Mountains. Visitor center and museum at Lemon House, picnicking half-mile west. Living history demonstrations, interpretive talks, trails, cross-country ski trails.

Location In Blair and Cambria Counties. U.S. 22 is main route through area. Visitor center on U.S. 22, 2 miles east of Cresson.

Accommodations Meals and lodging in Cresson.

Edgar Allan Poe National Historic Site
532 N. Seventh Street
Philadelphia, PA 19123
(215) 597-8780

Edgar Allan Poe's 6 years in Philadelphia were his most productive. He published "The Tell-Tale Heart" and "The Goldbug." Of his Philadelphia residences, only this home survives. House tours, exhibits, audiovisual program, small garden next to site.

Location On 7th St. 6 blocks north of Market St. By car, take 3rd or 5th Sts. north to Spring Garden, then west to 7th. From the Benjamin Franklin Bridge, turn right on 7th to Spring Garden (street will detour). Free parking on street. By public transportation; from Market St. take #47 bus north from 9th St., or from Liberty Bell take #50 trolley north at 5th and Market to Spring Garden, walk 2 blocks west.

Accommodations Meals and lodging in Philadelphia.

Fort Necessity National Battlefield
RD 2, Box 528, The National Pike
Farmington, PA 15437
(412) 329-5512

Scene of battle opening French and Indian War, July 3, 1754. Colonials under Lt. Col. George Washington, aged 22, met French troops and Indians. Also Mount Washington Tavern, refurbished 19th-century stagecoach inn. Visitor center, slide program, archeological exhibits, reconstructed fort, guided tours



Hopewell Village

of tavern, picnicking. Private and state campgrounds nearby.

Location 11 miles east of Uniontown, Pa. on U.S. 40.

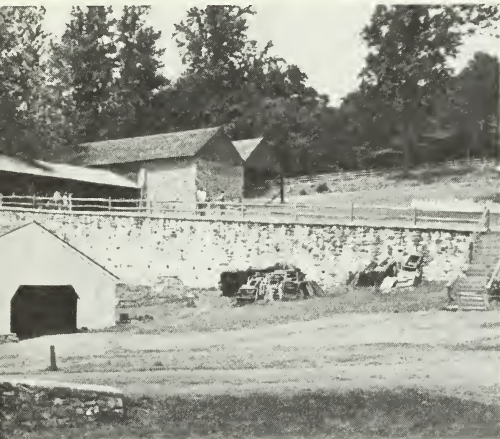
Accommodations Meals and lodging in Uniontown.

Friendship Hill National Historic Site
c/o Fort Necessity National Battlefield
RD 2, Box 528, The National Pike
Farmington, PA 15437
(412) 725-9190

Young Swiss immigrant Albert Gallatin made his home here on frontier's edge in 1780s. Gallatin, Secretary of the Treasury 1801-13, served his adopted country in business, politics, diplomacy, and scholarship. Conducted tours of unrestored 35-room Gallatin house, visitor center with exhibits and slide program, 5.4-mile hiking/cross-country ski trail, limited picnic facilities. Private and state campgrounds within 30 miles.

Location Along State Route 166, 3 miles north of Point Marion, Pa., about midway between Uniontown, Pa. and Morgantown, W. Va.

Accommodations Meals in Point Marion and Masontown, Pa. Meals and lodging in Uniontown and Morgantown.



Roger Williams

Hopewell Village National Historic Site
R.D. #1, Box 345, Elverson, PA 19520
(215) 582-8773

Finest example of early American iron plantation. Hopewell produced iron 1771-1883. Restored charcoal-fueled iron furnace, waterwheel, cast house, ironmaster's mansion, workers' homes, and other industrial and domestic buildings. Visitor center with slide program and exhibits, summer living history program, walking tour. Camping and recreational facilities in adjoining state park.

Location 5 miles south of Birdsboro, Pa., on Pa. Route 345, 45 miles northwest of Philadelphia.

Accommodations Meals and lodging in Reading, Pottstown, and Morgantown.

Johnstown Flood National Memorial
Box 247, Cresson, PA 16630
(814) 886-8176

Memorializes tragic Johnstown Flood of 1889, caused by break in South Fork Dam on Little Conemaugh River tributary. Visitor center at dam site, interpretive talks during summer months, interpretive trails, picnic facilities.

Location Along U.S. 219 and Pa. 869 at the South Fork Dam site, 10 miles northeast of Johnstown near St. Michael, Pa.

Accommodations Meals and lodging in Johnstown.

Roger Williams National Memorial
Box 367 Annex, Providence, RI 02901
(401) 528-5385

Undeveloped site commemorates Roger Williams, 17th-century advocate of religious freedom and democracy, who founded Colony of Rhode Island in 1636. Located in the College Hill Historic District. Slide program, exhibits, area information, and a small formal garden memorializing the Roger Williams Spring.

Location 282 North Main Street, Providence.

Accommodations Meals and lodging in the Greater Providence Area.

South Carolina

Congaree Swamp National Monument

P.O. Box 11938, Columbia, SC 29211

(803) 765-5571

Last significant tract of pristine southern bottomland hardwoods in southeast United States. Great variety of trees, many of state or national record size. Visitor contact and first-aid station, fishing, hiking trails, canoeing, guided walking tours on Saturdays, guided canoe tours on Sundays. Boardwalk under construction.

Location 20 miles southeast of Columbia off S.C. 48 (Bluff Rd.). Signs lead to the park on Old Bluff Road.

Accommodations Meals and lodging available in Columbia.

Cowpens National Battlefield

P.O. Box 308, Chesnee, SC 29323

(803) 461-2828

Site of Brig. Gen. Daniel Morgan's victory over British Lt. Col. Banastre Tarleton on January 17, 1781, about three months after the American success at Kings Mountain. Visitor center, museum exhibits, self-guiding trail, battlefield tour road, picnic facilities, multi-image slide presentation, battlefield map display.

Location 11 miles northwest of Interstate 85 at Gaffney, S.C., and two miles southeast of U.S. 221 at Chesnee, at the intersection of S.C. 11 and 110.

Accommodations Meals and lodging in Gaffney.

Fort Sumter National Monument

1214 Middle Street

Sullivan's Island, SC 29482

(803) 883-3123

Scene of Civil War engagement, April 12, 1861. Also embraces Fort Moultrie, where decisive encounter with a British fleet occurred on eve of Revolution, June 28, 1776. Depicts development of seacoast defense 1776-1947. Site of Seminole Chief Osceola's grave. Interpretive talks, guided tours, museum—at both forts. Visitor center and audiovisual presentations at Fort Moultrie only.

Location Fort Sumter, in Charleston Harbor, is accessible by boat only. Tour boats

leave from Municipal Marina on Lockwood Drive in Charleston. Fort Moultrie is on west Middle Street, Sullivans Island, 10 miles north of Charleston, off U.S. 17 and S.C. 703.

Accommodations Meals and lodging in Charleston, S.C. and surrounding area.

Kings Mountain National Military Park

Box 31, Kings Mountain, NC 28086

(Mailing Address)

(803) 936-7921

Site of important American frontiersmen victory at critical point in Revolution, October 7, 1780. Visitor center, museum exhibits, self-guiding trail, hiking and horse trails, living history camp and evening programs on summer weekends. Camping and picnicking in adjoining state park.

Location In South Carolina, 35 miles north-east of Spartanburg, S.C., on U.S. 29.

Accommodations Meals and lodging in Gaffney and Spartanburg, S.C.

Ninety Six National Historic Site

Box 496, Ninety Six, SC 29666

(803) 543-4068

Important backcountry trading village held briefly by British in Revolution was scene of Nathanael Greene's siege in 1781. Earthwork embankments, remains of two historic villages, colonial plantation, and prehistoric sites. Visitor center, picnicking, Revolutionary War interpretive trails. Camping in Greenwood State Park, 8 miles away.

Location 9 miles east of Greenwood and 2 miles south of Ninety Six, S.C., on State Highway 248.

Accommodations Meals and lodging in Greenwood.

South Dakota



Badlands

Badlands National Park
P.O. Box 6, Interior, SD 57750
(605) 433-5361

Prairie grasslands, wildlife, animal fossils, and beautiful scenery carved by erosion. Visitor center, interpretive programs, self-guiding tours, camping, wayside exhibits.

Location Headquarters is 2 miles northeast of Interior, S.D.

Accommodations Meals and lodging summer only. Meals and lodging all year in nearby towns.

Jewel Cave National Monument
P.O. Box 351, Custer, SD 57730
(605) 673-2288

Caverns in limestone formation. Series of chambers connected by narrow passages. Many side galleries and fine calcite crystal encrustations. Visitor center, cave tours, picnicking.

Location 13 miles west of Custer, on U.S. 16.
Accommodations Meals and lodging in Custer and in Newcastle, Wyo.

Tennessee

Andrew Johnson National Historic Site
Depot Street, Greeneville, TN 37743
(615) 638-3551

Home, tailor shop, and grave of 17th President of United States, 1865-69. Includes Andrew Johnson National Cemetery. Visitor center, museum, tailor shop, Andrew Johnson Home.

Location In Greeneville, Tenn., 70 miles northeast of Knoxville, Tenn.

Accommodations Meals and lodging in Greeneville.

Big South Fork National River and Recreation Area
Drawer 630, Oneida, TN 37841
(615) 569-6389

Scenic portion of Cumberland Plateau bisected by Big South Fork of Cumberland River. Stretches of relatively placid water and of whitewater, sandstone cliffs, natural arches, waterfalls, diverse hardwood and coniferous forests. Visitor center, campground, picnic area, hiking and horse trails, scenic overlooks, canoeing, rafting, hunting, fishing, bird-watching.

Location On Kentucky-Tennessee border between U.S. 27 and 127, 75 miles northwest of Knoxville, Tenn. Visitor center 9 miles west of Oneida, on Leatherwood Ford Road.

Accommodations Meals and lodging in Oneida and Jamestown, Tenn., and Whitney City, Ky.

Fort Donelson National Military Park
Box F, Dover, TN 37058
(615) 232-5348

Site of February, 1862 Civil War battle, first major Union victory. Began Ulysses S. Grant's rise to prominence. Remains of Confederate-built fort, water batteries, and outer defenses. Dover Hotel, restored site of surrender. Visitor center, exhibits, self-guiding auto tour, National Cemetery.

Location West side of Dover on U.S. 79.

Accommodations Meals and lodging in Dover.



Stones River

Shiloh National Military Park

Shiloh, TN 38376

(901) 689-5275

Scene of bitter battle April 6-7, 1862, which destroyed Southern chances for early victory. Well-preserved Indian mounds. Visitor center, audiovisual exhibits in museum, self-guiding tour of battlefield, picnicking. Private campground nearby.

Location 10 miles south of Savannah and Adamsville, Tenn., via U.S. 64 and Tenn. 22. 100 miles east of Memphis, Tenn.

Accommodations Meals and lodging in Pickwick, Tenn. (13 miles), Savannah, Tenn. (10 miles), and Adamsville, Tenn. (10 miles).

Stones River National Battlefield

**Rt. #10, Box 495, Old Nashville Highway
Murfreesboro, TN 37130**

(615) 893-9501

Scene of a fierce mid-winter battle, December 31, 1862-January 2, 1863, which began Union offensive to trisect Confederacy. Visitor center, self-guiding auto tour of battlefield, interpretive exhibits, National Cemetery, picnicking. Army Corps of Engineers and private campgrounds nearby.

Location Northwest corner of Murfreesboro, 30 miles southeast of Nashville, Tenn., on U.S. 40.

Accommodations Meals and lodging in Murfreesboro.



Guadalupe Mountains

Alibates Flint Quarries National Monument

Box 1438, Fritch, TX 79036

(806) 857-3151

Quarries used from 12,000 years ago to 1870s. Multi-colored flint was used for tools of survival. Undeveloped. Guided tours daily Memorial Day to Labor Day; by reservation at other times.

Location Adjoins Lake Meredith Recreation Area, 40 miles north of Amarillo, Tex.

Accommodations Meals and lodging in Fritch and Borger.

Big Bend National Park

Big Bend National Park, TX 79834

(915) 477-2251

Spectacular mountain and desert scenery with unusual geological structures in great bend of the Rio Grande. Camping, hiking, back-country trails, guided horseback trips, chartered river rafting, canoeing, guided nature walks, naturalist programs.

Location From El Paso, 323 miles to park headquarters at Panther Junction via Interstate 10 and U.S. 90 to Alpine, and then Tex. 118. AMTRAK stops at Alpine.

Accommodations Chisos Mountain Lodge, National Park Concessions, Inc., Big Bend National Park, TX 79834.

Big Thicket National Preserve
Box 7408, Beaumont, TX 77706
(713) 839-2691

Great biological diversity. Plants and animals from eastern deciduous forests, southern pine savannahs, and prairies. Visitor information station, hiking, guided walks, self-guiding trails, fishing, boating.

Location Widely separated units scattered north of Beaumont. Information station on FM 420, 2.5 miles east of U.S. 69, 7 miles north of Kountze.

Accommodations Meals and lodging in Beaumont and smaller towns of Woodville, Silsbee, and Kountze.

Chamizal National Memorial
P.O. Box 722, El Paso, TX 79944
(915) 543-7780

Memorializes signing of 1963 treaty resolving 99-year boundary dispute between United States and Mexico. Area presents International Boundary history. Activities preserve cultural heritages of both nations. Visitor center, museum, interpretive exhibits, documentary film, travel information, graphic arts galleries, biking, picnicking, theatrical performances. Auditorium open 8 to 5 daily, evenings as scheduled. Festivals in March, May, July, September, and October.

Location In south-central El Paso on International Boundary. Entrances from San Marcial Street and Delta Drive, easy access to and from Interstate 10.

Accommodations Meals and lodging in El Paso and Juarez, Mexico, adjacent to park.

Fort Davis National Historic Site
Box 1456, Fort Davis, TX 79734
(915) 426-3225

Strategic west Texas defense post from 1854-1891. Troops guarded traffic on the San Antonio-El Paso Road, protected region's settlers, and campaigned against Comanche and Apache Indians. Visitor center with museum and audiovisual program, restored and refurbished historic buildings, interpretive programs, picnic area.

Location Northern edge of town of Fort Davis. Reached from Interstate 10 via Tex. 17 and 118 or from U.S. 90 via 505 and 166 or 17.

Accommodations Meals and lodging in town of Fort Davis and in nearby Davis Mountains State Park.

Guadalupe Mountains National Park
3225 National Parks Highway
Carlsbad, NM 88220
(915) 828-3385

Most extensive exposed fossil reef on Earth. Scenic desert lowlands, rugged canyons, and forested mountains. Highest peak in Texas. Camping, backpacking, hiking, visitor center, guided hikes, primitive roads, and interpretive programs.

Location On U.S. 62-180, 55 miles southwest of Carlsbad, N. Mex., 110 miles east of El Paso, Tex.

Accommodations Meals and lodging in White's City, 34 miles northeast on U.S. 62-180, and in Carlsbad.

San Antonio Missions
National Historical Park
727 East Durango, Room A612
San Antonio, TX 78206
(512) 229-6000

Four 18th-century Spanish colonial missions, farms, and irrigation (or acequia) systems. Missions Concepcion, San Jose, San Juan and Espada, the San Juan and Espada Acequias, and Espada Dam and Aqueduct. Exhibits, small museum, orientation talks, tours by appointment, and self-guiding walking, historical, and nature trails.

Location Southern San Antonio. A signed driving trail that begins downtown at Mission San Antonio Valero (also known as the Alamo) reaches all the park missions. The largest, Mission San Jose, is 2 blocks north of the Roosevelt Avenue (Highway 281) and Southeast Military Drive (Loop 13) intersection. Public bus serves Missions Concepcion and San Jose. Commercial tours to all missions.

Accommodations Meals and lodging in San Antonio.

Utah

Arches National Park
125 West Second, South
Moab, UT 84532
(801) 259-8161

Extraordinary, brilliantly colored erosional features—giant arches, windows, pinnacles, and pedestals. Campfire talks in summer, camping, self-guiding trails, hiking, rock climbing, backcountry trails, wildlife sanctuary, picnicking, (winter camping is without water). *Location* Off U.S. 163 and Utah 128, just north of Moab.

Accommodations Meals and lodging in Moab. Camping for tents and trailers in the park's Devils Garden section.

Canyonlands National Park
125 West Second, South, Moab, UT 84532
(801) 259-7164

Colorful rocks, spires, gorges, and 7,800-foot mesas. Indian petroglyphs of 1,000 years ago. Confluence of Colorado and Green Rivers. Camping, nature sanctuary, hiking, guided tours, picnicking, backcountry trails, fishing, chartered river rafting, 4-wheel drive tours, guided horseback tours. *Location* Off Utah 191, north or southwest of Moab.

Accommodations Meals and lodging in Moab.

Capitol Reef National Park
Torrey, UT 84775
(801) 425-3871

Sixty-mile uplift of sandstone cliffs with highly-colored sedimentary formations dissected by narrow high-walled gorges. Named for dome-shaped whitecap rock along Fremont River. Visitor center, campground, interpretive programs (seasonal), picnicking, guided tours, museum.

Location 5 miles from Torrey via Utah 24.

Accommodations Meals and lodging in Torrey.

Cedar Breaks National Monument
Box 749, Cedar City, UT 84720
(801) 586-9451

Huge natural amphitheater eroded into variegated 2,000-foot-thick Pink Cliffs (Wasatch

Formation). Commonly inaccessible until mid-June because of weather conditions. Visitor center, exhibits, scenic drive, hiking, nature trails, scenic view, camping.

Location 23 miles from Cedar City off Interstate 15.

Accommodations Meals and lodging in Cedar City.

Golden Spike National Historic Site
P.O. Box W, Brigham City, UT 84302
(801) 471-2209

Marks joining of America's first transcontinental railroad. Final spike driven here in 1869, uniting Union Pacific and Central Pacific Railroads. Visitor center, interpretive programs, picnicking.

Location 32 miles west of Brigham City.

Accommodations Meals and lodging in Brigham City and Tremonton.

Natural Bridges National Monument
Star Route, Blanding, UT 84511
(801) 259-7164

Sipapu, Kachina, Owachomo—stream-eroded bridges with lyrical names. From 180 to 268 feet in span and 9 to 93 feet thick. Prehistoric pictographs. Visitor center, campground, exhibits, hiking, nature trails, picnicking, scenic view.

Location 40 miles west of Blanding via Utah 95.

Accommodations Meals and lodging in Blanding.

Rainbow Bridge National Monument
c/o Glen Canyon National Recreation Area
Box 1507, Page, AZ 86040
(602) 645-2471

World's greatest natural bridge. Symmetrical arch of salmon-pink sandstone rises 290 feet above gorge. Camping, picnicking, boating, boat tours by concessioners. Scenic charter flights from Page.

Location Reached by trail from base of Navajo Mountain (15 miles); also by water from Lake Powell in Glen Canyon National Recreation Area.

Accommodations Meals and lodging in Page. Camping in Glen Canyon NRA.

Virginia

**Appomattox Court House
National Historical Park**
Box 218, Appomattox, VA 24522
(804) 352-8987

Scene of surrender, on April 9, 1865, of Confederacy's largest field army, under Gen. Robert E. Lee, to Federal Army under Lt. Gen. Ulysses S. Grant. Courthouse, restored town, visitor center, exhibits, 6-mile hiking trail. Camping and picnic areas nearby.

Location 3 miles northeast of town of Appomattox on Va. 24, and 75 miles from Roanoke.

Accommodations Meals and lodging in Appomattox.

Booker T. Washington National Monument
Route 1, Box 195, Hardy, VA 24101
(703) 721-2094

Site of birthplace and childhood home of black leader and educator. A Living Farm area with crops and farm animals. Park interpreters in period dress, mid-June to Labor Day. Visitor center, exhibits, audiovisual program, self-guiding trail, living history farm and picnic area. Private and public campgrounds nearby.

Location 16 miles northeast of Rocky Mount, Va., via Va. 122N, and 20 miles southeast of Roanoke via Va. 116S and 122N, and 21 miles southwest of Bedford via 122.

Accommodations Meals and lodging in Rocky Mount, Roanoke, and Bedford.

Fredericksburg and Spotsylvania County Battlefields Memorial National Military Park
Box 679, Fredericksburg, VA 22404
(703) 373-4461

Portions of battlefields of Fredericksburg, Chancellorsville, the Wilderness, and Spotsylvania Court House. Major Civil War battles between 1862 and 1864. Visitor center with museum in Fredericksburg, museum displays at Chatham Manor, visitor center with museum in Chancellorsville, outdoor displays at Salem Church and Jackson Shrine, exhibit shelters at the Wilderness and Spotsylvania, self-guiding walking and auto tours, picnic areas, summer schedule of interpretive talks and living history presentations.

Location Parts of 4 battlefields, and 3 re-

lated sites, within 60 miles of Washington, D.C.

Accommodations Meals and lodging in Fredericksburg. Camping near Fredericksburg, and at Prince William Forest Park, 20 miles north.

**George Washington Birthplace
National Monument**
Washington's Birthplace, VA 22575
(804) 224-0196

Birthplace of first U.S. President, memorial mansion, and gardens. Site of tombs of his father, grandfather, and greatgrandfather. Restored and operating Colonial farm complete with crops, plowing, preparation of period food, and guides in period dress. Historic mansion area, colonial farm, burial grounds, hiking trails, picnic areas, visitor center.

Location On Potomac River, 38 miles east of Fredericksburg, Va., reached from Va. 3 via Va. 204. 85 miles southeast of Washington, D.C.

Accommodations Meals and lodging in Fredericksburg, Montross, and Colonial Beach.

**Maggie L. Walker National Historic Site
c/o Richmond National Battlefield Park**
3215 East Broad Street, Richmond, VA 23223
(804) 226-1981

Restored home of black community leader who was first woman president of a U.S. financial institution. Period furnishings. Please call before visit. Guided tours arranged. Restoration underway; projected opening in 1985.

Location Downtown Richmond at 110½ East Leigh Street, in Jackson Ward National Historic Landmark District.

Accommodations Meals and lodging in Richmond.

Manassas National Battlefield Park
Box 1830, Manassas, VA 22110
(703) 754-7107

Scene of two Civil War battles, First and Second Manassas, also known as Bull Run, on July 21, 1861, and August 28-30, 1862. Confederate Gen. Thomas J. Jackson nicknamed "Stonewall" at First Manassas. This is a Living History area. Visitor center with

museum, exhibits, self-guiding tours. Guided tours available on request.

Location 26 miles southwest of Washington, D.C. The visitor center/museum is on Va. 234, a mile from the intersection of Interstate 66 and Va. 234.

Accommodations Meals and lodging in Manassas.

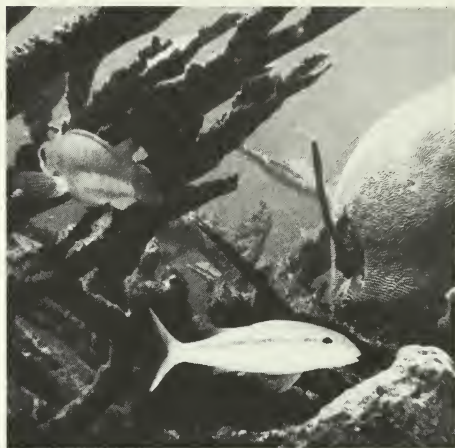
Richmond National Battlefield Park
3215 East Broad Street, Richmond, VA 23223
(804) 226-1981

Scene of several Civil War battles to capture Confederate capital of Richmond. Ten separate units in 3 counties and city of Richmond. Visitor centers at headquarters, Ft. Harrison, and Cold Harbor. Group guided tours on request. Short hiking trails, historic forts, earthworks, and trenches, historic buildings, living history programs, picnic areas.

Location Richmond, Va. Headquarters at 3215 East Broad Street. Begin park tour here.

Accommodations Meals and lodging in Richmond.

Virgin Islands



Buck Island Reef

Buck Island Reef National Monument
Box 160, Christiansted, St. Croix, VI 00820
(809) 773-1460

Among the finest coral reefs and crystal lagoons in the Caribbean. Grottoes, sea fans, gorgonias, and tropical fishes. Underwater trail. Rookery of frigate birds and pelicans. Habitat of sea turtles. Boating tour, swimming, skindiving, underwater trail, nature trail, bathhouse, picnic areas, snorkeling.

Location Off northeast coast of St. Croix, Virgin Islands. Reached only by boat.

Accommodations Meals and lodging in Christiansted.

Christiansted National Historic Site
Box 160, Christiansted, St. Croix, VI 00820
(809) 773-1460

Commemorates colonial development of Virgin Islands. Preserves 18th- and 19th-century Danish colonial structures at former Danish West Indies capital on St. Croix Island. Discovered by Christopher Columbus, 1493. Walking tour of restored buildings, information at Park Service visitor center at Fort Christiansvaern in downtown Christiansted.

Location In city of Christiansted on St. Croix.

Accommodations Meals and lodging in Christiansted.

Washington

Coulee Dam National Recreation Area
Box 37, Coulee Dam, WA 99116
(509) 633-0881

Largest dam on Columbia River. Behind it, Franklin D. Roosevelt Lake stretches 150 miles, nearly to Canada. Camping, picnicking, boating, fishing, visitor center at Grand Coulee and Fort Spokane. Self-guiding trails around remaining buildings and foundations of Fort Spokane, 1880 frontier military outpost. Scenic drives, water skiing, hunting.

Location Headquarters on Columbia River; U.S. 2 to Wilbur, Wash., Wash. 174 to Coulee Dam.

Accommodations Meals and lodging at Coulee Dam and Kettle Falls.

Fort Vancouver National Historic Site
Vancouver, WA 98661
(206) 696-7655

Western headquarters of Hudson's Bay Company, 1825-49. Trading and political hub for Pacific Northwest. Visitor center, museum exhibits, reconstructed stockade, children's playground. Picnicking and private campground nearby.

Location Vancouver, Wash.

Accommodations Meals and lodging in Greater Vancouver Area.

Klondike Gold Rush National Historical Park
117 South Main Street, Seattle, WA 98104
(206) 442-7220

Interprets Seattle's role as main supply center for Alaska and Klondike gold fields, 1897-1898, and relates gold rush drama. Mining exhibits, artifacts, large historic photomurals, audiovisual programs.

Location 117 So. Main in Seattle's historic Pioneer Square area.

Accommodations Meals and lodging in immediate area.

Lake Chelan National Recreation Area
North Cascades Complex, 800 State Street
Sedro Woolley, WA 98284
(206) 855-1331

Lake Chelan and Stehekin River Valley in Cascade Range. Adjoins North Cascades National Park. Hunting, fishing, camping, boat-

ing, hiking, horseback riding, float trips, cross-country skiing.

Location Reached by trail, commercial passenger boat, private boat, or float plane from Chelan, Wash.

Accommodations Meals and lodging in Stehekin.

North Cascades National Park
800 State Street, Sedro Woolley, WA 98284
(206) 855-1331

Remote alpine peaks, glaciers, mountain lakes, and streams beckon backpacker and trailrider. Fishing, hiking, mountain climbing, scenic drives, charter plane tours, camping, backcountry trails, horse trails (rent horses in nearby communities). Professional guide and packtrain services available.

Location Northeast of Seattle-Tacoma area via Interstate 5 and Wash. Rt. 20.

Accommodations Meals and lodging. Also in adjacent communities.

Ross Lake National Recreation Area
North Cascades Complex, 800 State Street
Sedro Woolley, WA 98284
(206) 855-1331

Mountain-ringed reservoirs in Skagit River canyon separating north and south units of North Cascades National Park. Hunting, fishing, camping, boating, horse trails, boat tours, float trips, hiking, cross-country skiing.

Location 61 miles from Sedro Woolley, Wash.

Accommodations Meals and lodging. Also in adjacent communities.

San Juan Island National Historical Park
Box 429, Friday Harbor, WA 98250
(206) 378-2240

Commemorates peaceful relations—United States, Great Britain, and Canada—since 1872 boundary dispute here. Includes English and American campsites. Limited camping in county-owned park, small commercial trailer park, two small commercial campgrounds, remains of earthworks and two structures in American Camp, four remaining structures in English Camp.

Location Reached by autoferry from Anacortes, Wash., about 88 miles north of Seat-



San Juan Island

tle. Also, by private boats, or by air from Seattle to Friday Harbor.

Accommodations Limited overnight accommodations at Friday Harbor and Roche Harbor.

Whitman Mission National Historic Site
Route 2, Box 247, Walla Walla, WA 99362
 (509) 522-6360

Commemorates Marcus and Narcissa Whitman's courage and labor among Native Americans in Old Oregon when American immigrants began coming down the Oregon Trail. Clash between Indian and American cultures led to their deaths in 1847. Visitor center, picnicking, museum, exhibits, self-guiding trails, mission site, pioneer and Indian cultural demonstrations.

Location 7 miles west of Walla Walla off U.S. 12.

Accommodations Meals and lodging in Walla Walla.

West Virginia

New River Gorge National River
Drawer V, Oak Hill, WV 25901
 (304) 465-0508

Includes 50 miles of one of North America's oldest rivers. Spectacular scenery. Historic themes include railroading, coal mining, and lumbering. One of East's best whitewater rivers. Trophy fishing. Visitor center, exhibits, canoe programs, interpretive programs, bus tours.

Location Visitor center 2 miles north of Fayetteville, on east side of New River on U.S. 19. Visitor center at Hinton open seasonally on State Highway 3 bypass.

Accommodations Meals and lodging in nearby communities.

Wisconsin

Apostle Islands National Lakeshore
Route 1, Box 4, Bayfield, WI 54814
 (715) 779-3397

Twenty islands and a 12-mile strip on Lake Superior's south shore. Sandstone cliffs, sea caves, lighthouses, sand beaches. Headquarters and visitor center in Bayfield. Hiking, sailing, boat tours, beachcombing, nature photography, commercial fishing, museum, hunting, fishing, tent camping in designated and backcountry sites on most islands.

Location Mainland unit 13 miles northwest of Bayfield. Islands reached by concession-operated or private boat.

Accommodations Meals and lodging in Bayfield.

Wyoming

Devils Tower National Monument

Devils Tower, WY 82714

(307) 467-5370

The first national monument. An 865-foot tower of columnar rock, remains of a volcanic intrusion. Visitor center, exhibits, self-guiding nature trails, hiking, picnicking, camping.

Location Off Wyo. 24, 7 miles north of U.S. 14; 29 miles northwest of Sundance, Wyo.; and 33 miles northeast of Moorecroft, Wyo.

Accommodations Meals and lodging in Sundance and Hulett, Wyo.

Fort Laramie National Historic Site

Fort Laramie, WY 82212

(307) 837-2221

Site of fur-trading post and surviving buildings of major military post guarding covered-wagon trails to West, 1834-90. Visitor center, self-guiding tours, military and civilian life on a frontier military post portrayed, including loading and firing demonstrations, and post trading operations.

Location 3 miles southwest of town of Fort Laramie on U.S. 26.

Accommodations Meals and lodging in Fort Laramie.

Fossil Butte National Monument

Box 527, Kemmerer, WY 83101

(307) 877-3450

Nation's most extensive concentration of fossilized freshwater fish, in 60 million-year-old layers of shale. Visitor center, hiking, exhibits, picnicking, interpretive programs.

Location 10 miles north of Kemmerer on U.S. 30.

Accommodations Meals and lodging in Kemmerer.

Index

Abraham Lincoln Birthplace 23
Adams 25
Agate Fossil Beds 29
Alabama 10
Alaska 11
Alibates Flint Quarries 40
Allegheny Portage Railroad 36
Andersonville 20
Andrew Johnson 39
Aniakchak 11
Antietam 24
Apostle Islands 46
Appomattox Court House 43
Arches 42
Arizona 13
Arkansas 16
Arkansas Post 16
Aztec Ruins 30

Badlands 39
Bent's Old Fort 17
Bering Land Bridge 11
Big Bend 40
Big Hole 28
Bighorn Canyon 28
Big South Fork 23, 39
Big Thicket 41
Biscayne 19
Black Canyon of the Gunnison 17
Booker T. Washington 43
Buck Island Reef 44

California 16
Canyon de Chelly 13
Canyonlands 42
Cape Krusenstern 12
Cape Lookout 33
Capitol Reef 42
Capulin Mountain 30
Carl Sandburg Home 33
Casa Grande 13
Castle Clinton 31
Cedar Breaks 42
Chaco Culture 30
Chamizal 41
Chiricahua 13
Christiansted 44
Clara Barton 24
Colorado 17
Colorado National Monument 17
Congaree Swamp 38
Coronado 13
Coulee Dam 45

Cowpens 38
Craters of the Moon 21
Cumberland Gap 23
Custer Battlefield 28

De Soto 19
Devils Postpile 16
Devils Tower 47
Dinosaur 18
District of Columbia 19

Edgar Allen Poe 36
Edison 29
Effigy Mounds 22
Eleanor Roosevelt 31
El Morro 30

Federal Hall 31
Florida 19
Florissant Fossil Beds 18
Fort Bowie 13
Fort Caroline 19
Fort Clatsop 35
Fort Davis 41
Fort Donelson 39
Fort Frederica 20
Fort Jefferson 20
Fort Laramie 47
Fort Larned 22
Fort Necessity 36
Fort Pulaski 21
Fort Raleigh 34
Fort Scott 23
Fort Smith 16
Fort Stanwix 32
Fort Sumter 38
Fort Union 30
Fort Union Trading Post 34
Fort Vancouver 45
Fort Washington 24
Fossil Butte 47
Frederick Douglass Home 19
Frederick Law Olmsted 25
Fredericksburg and Spotsylvania 43
Friendship Hill 36

Gates of the Arctic 12
General Grant 32
George Rogers Clark 22
George Washington Birthplace 43
George Washington Carver 27
Georgia 20
Gila Cliff Dwellings 30
Golden Spike 42

Grand Portage 26
Grant-Kohrs Ranch 28
Great Sand Dunes 18
Guadalupe Mountains 41
Guam 21

Hamilton Grange 32
Hampton 24
Homestead 29
Hopewell Village 37
Horseshoe Bend 10
Hovenweep 18
Hubbell Trading Post 13

Idaho 21
Indiana 22
Iowa 22

Jewel Cave 39
John Day Fossil Beds 35
John Fitzgerald Kennedy 25
John Muir 16
Johnstown Flood 37

Kansas 22
Katmai 11
Kenai Fjords 12
Kentucky 23
Kings Mountain 38
Klondike Gold Rush 11, 45
Knife River Indian Villages 34
Kobuk Valley 12

Lake Chelan 45
Lake Clark 12
Lava Beds 16
Lehman Caves 29
Longfellow 25

Maggie L. Walker 43
Manassas 43
Martin Van Buren 32
Maryland 24
Massachusetts 25
Michigan 26
Minnesota 26
Missouri 27
Montana 28
Moores Creek 34
Mound City Group 35

Natural Bridges 42
Navajo 14
Nebraska 29
Nevada 29
New Hampshire 29

The National Parks: Lesser-Known Areas

UNIVERSITY OF GEORGIA LIBRARIES
The National Parks : lesser-kno
I 29.9/2:P 21/985



3 2108 04969 3719

