



3 1604 019 701 525

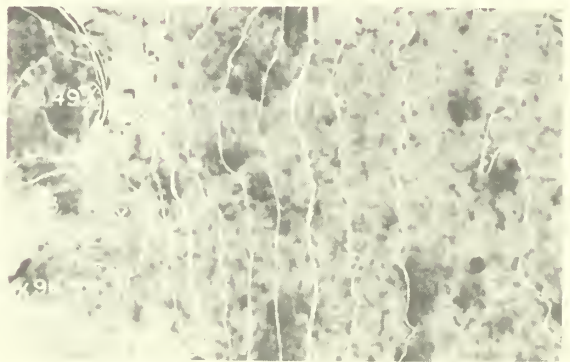
# REMOTE SENSING

## A Bibliography of Cultural Resource Studies

GOVT. DOCUMENTS  
DEPOSITORY ITEM

MAY 9 1980

CLEMSON  
LIBRARY





# REMOTE SENSING

## Aerial Anthropological Perspectives:

### A Bibliography of Remote Sensing in Cultural Resource Studies

Thomas R. Lyons  
Robert K. Hitchcock  
Wirth H. Wills

Supplement No. 3

to Remote Sensing: A Handbook for Archeologists and Cultural Resource Managers

Series Editor: Thomas R. Lyons

Cultural Resources Management  
National Park Service  
U.S. Department of the Interior  
Washington, D.C.  
1980

# Acknowledgments

This bibliography on remote sensing in cultural resource studies has been compiled over a period of about five years of research at the Remote Sensing Division, Southwest Cultural Resources Center, National Park Service. We have been aided by numerous government agencies in the course of this work, including the Department of the Interior, National Park Service, the U.S. Geological Survey EROS Program, and the National Aeronautics and Space Administration (NASA). Financial support has been provided by these agencies as well as by the National Geographic Society (Grant No. 1177). The Department of Anthropology, University of New Mexico, and the administration of the University of New Mexico have been very helpful to us in our work.

Numerous individuals have aided us. We especially wish to acknowledge the aid of Rosemary Ames, Marita Brooks, Galen Brown, Dwight Drager, James Ebert, George Gumerman, James Judge, Stephanie Klausner, Robert Lister, Joan Mathien, Stanley Morain and Gretchen Obenauf. Douglas Scovill, Chief Anthropologist of the National Park Service has also encouraged and supported us in the pursuit of new research directions. Christina Allen aided immeasurably in the compilation of this bibliography, not only in procuring references (especially those dealing with underwater remote sensing), but also in proofreading the entire manuscript. To all of these people, and many others not specifically singled out here, we wish to extend our thanks.

## Library of Congress Cataloging in Publication Data

Main entry under title:

Remote sensing supplement.

Supplements to Remote sensing: a handbook for archeologists and cultural resource managers by T.R. Lyons and T.E. Avery.

1. Aerial photography in archeology—Collected works. 2. Photography in archeology—Collected works. I. Lyons, Thomas R. Remote sensing. CC76.4.L96 Suppl 3 930.1'028 80-81

# Preface

The overall field of Remote Sensing is growing rapidly and there is an ever increasing number of applications of remote sensing techniques in the study of cultural resources. More and more books and reports are being published on this topic in archeology, ethnology and related disciplines. Consequently an updated and extensive—insofar as possible—bibliography of the relevant literature is needed from time to time to assist investigators. This supplement is the first edition in what is planned to be a continuing and expanding effort to that end.

This supplement is designed for use with *Remote Sensing: A Handbook for Archeologists and Cultural Resource Managers*, by Thomas R. Lyons and Thomas Eugene Avery. The handbook may be obtained by writing the Superintendent of Documents, U.S. Government Printing Office, Washington, DC 20402.

Within the next several months, the National Park Service will publish other supplements to the handbook dealing with regional applications of remote sensing for archeologists and cultural resource managers. The reader may receive notification of these publications as they become available by writing the Superintendent of Documents (address above) and asking to be placed on

mailing list N-557.

This is the fourth volume in the series which includes:

1. LYONS, THOMAS R. AND THOMAS EUGENE AVERY  
1977 *Remote Sensing: A Handbook for Archeologists and Cultural Resource Managers.*
2. AVERY, THOMAS EUGENE AND THOMAS R. LYONS  
1978 *Practical Exercises on Remote Sensing in Archeology.*
3. MORAIN, STANLEY A. AND THOMAS K. BUDGE  
1978 *Instrumentation for Remote Sensing in Archeology.*
4. LYONS, THOMAS R., ROBERT K. HITCHCOCK, AND WIRT H. WILLS  
1980 *Aerial Anthropological Perspectives: A Bibliography of Remote Sensing in Cultural Resource Studies.*

DOUGLAS H. SCOVILL  
*Chief Anthropologist  
National Park Service*

# Bibliography

- ACKERMAN, J.S., AND R. CARPENTER  
1963 *Art and Archaeology*. Englewood Cliffs: Prentice-Hall.
- ADAMESTEANU, D.  
1964 Aerial Photography and Archaeological Exploration. *Course on the Methods of Archaeological Prospecting*. Rome: Lerici Foundation.  
1967 Viabilita Antica: Ancient Road Systems in the Plain of the Crati: A Contribution of Air Photography. In *The Search for Sybaris, 1960–1965*, F. Rainey, C.M. Lerici, et al., pp. 265–269. Rome: Lerici Editori.
- ADAMS, R. MCC.  
1968 Archaeological Research Strategies: Past and Present. *Science* 160: 1187–1192.
- ADRIANOV, B.V.  
1956 Archeologotopograficheskie Issledovania na Zemliakh Drevnego Oroshenia Trutkul'skogo i Biruniiskogo Rainonov v 1955–1956 gg. *Materialy Khorezmskoi Ekspeditsii*, Vol. 1. Moscow: Akademia Nauk SSSR.  
1965 Deshifirovanie Aerofotosnimkov pri Izuchenii Drevnikh Orositel'nykh Sistem. In *Estestvennye Nauki v Arkeologii*, p. 261. Moscow: Akademia Nauk SSSR.  
1969 *Drevnie Orositel'nye Sistemy Priaral'ia*. Akademia Nauk SSSR, Institut Etnografii im. N. N. Miklukho-Maklafa. Moscow: Izhatel'stvo "Nauka".
- AGACHE, R.  
1962 Vues Aériennes de la Somme et Recherche du Passé. *Bulletin Spécial de la Société de Préhistoire du Nord*. Amiens: Musée d'Amiens.  
1963 Détection des Fosses Combles sur Terrains sans Végétation Grâce à l'Humidité Remanente des Remblais. La Procédé des Zingueurs. *Société de Préhistoire Française* 60(9–10): 642–647.  
1964 Aerial Reconnaissance in Picardy. *Antiquity* 38: 113–119.  
1964 Archéologie Aérienne de la Somme. *Bulletin Spécial de la Société de Préhistoire du Nord*. Amiens: Musée d'Amiens.  
1965 Découverte Aérienne de la Picardie Antique. *Archéologia* 6: 44–49.  
1966 Etudes d'archéologie aérienne. Paris: Service d'Édition et de Vente des Publications de l'Éducation Nationale.
- 1967 Recherche des Moments Favorable à la Mise en Évidence des Vestiges Archéologiques Arases par l'Agriculture dans le Nord de la France. *Secrétariat de la Commission* 14: 9–18. Paris.
- 1970 Détection Aérienne de Vestiges Proto-Historiques Gallo-Romains et Médiévaux dans le Bassin de la Somme et Ses Abords. *Numéro Spécial du Bulletin de la Société de Préhistoire du Nord* 7. Amiens: Musée d'Amiens.
- 1972 New Aerial Research in Picardy and Artois. *Antiquity* 46:117–123.
- 1973 Carte de l'Habitat Antique de la Somme d'après les Inspections Aériennes. *Revue de Nord* 55:15–16.
- 1975 Aerial Reconnaissance in Northern France. In *Aerial Reconnaissance for Archaeology*, D.R. Wilson, ed., *Council for British Archaeology Research Report* No. 12:70–80.
- AGUILAR, A.M.  
1967 Cost Analysis for Aerial Surveying. *Photogrammetric Engineering* 33:81–91.  
1969 Estimating Costs of Aerial Surveys. *Civil Engineering* 39:70–73.
- AIN SHAMS UNIVERSITY AND STANFORD RESEARCH INSTITUTE  
1975 *Electromagnetic Sounder Experiments at the Pyramids of Giza*. Report Prepared for the Office of International Programs, National Science Foundation, Grant No. GF-38767. On file at National Science Foundation, Washington, D.C.
- AITKEN, M.J.  
1958 Magnetic Prospecting I. *Archaeometry* 1:24–29.  
1959 Magnetic Prospecting II. *Archaeometry* 2:32–36.  
1959 Magnetic Prospecting III: An Archaeological Note About Madmarston. *Archaeometry* 2:37–39.  
1959 Magnetic Prospecting IV: The Proton Magnetometer. *Archaeometry* 2:40–42.  
1959 Magnetic Prospecting—An Interim Assessment. *Antiquity* 33:205–207.  
1960 Magnetic Prospecting: The Proton Gradiometer. *Archaeometry* 3:38–40.  
1960 The Magnetic Survey. In Excavations at Verulamium 1959, 5th Interim Report, S.S. Frere. *Antiquary Journal* 40:21–24.  
1961 The Magnetic Survey. In Excavations at Verulamium 1960, 6th Interim Report, S.S. Frere. *Antiquary Journal* 41:83–85.

- 1961 *Physics and Archaeology*. New York: Interscience Publishers.
- 1964 *The Proton Magnetometer and Its Relationship to Aerial Photography. Colloque International d'Archéologie Aérienne: 255–258.*
- 1969 Magnetic Location. In *Science in Archaeology*, D. Brothwell and E. Higgs, eds., pp. 681–694. London: Thames and Hudson.
- 1970 Magnetic Prospecting. In *Scientific Methods in Medieval Archaeology*, R. Berger, ed., pp. 423–434. Berkeley: University of California Press.
- 1974 *Physics and Archaeology*, 2nd ed. London: Oxford University Press.
- AITKEN, M.J., AND J.C. ALLDRED  
1964 A Simulator-Trainer for Magnetic Prospection. *Archaeometry* 7:28–35.
- AITKEN, M.J., AND M.S. TITE  
1962 Proton Magnetometer Surveying on Some British Hill Forts. *Archaeometry* 5:126–134.
- AITKEN, M.J., G. WEBSTER, AND A. REES  
1958 Magnetic Prospecting. *Antiquity* 32:270–271.
- ALLDRED, J.C.  
1964 A Fluxgate Gradiometer for Archaeological Surveying. *Archaeometry* 7:14–19.
- ALLDRED, J.C., AND A. SHEPHERD  
1963 Trial of Neutron Scattering for the Detection of Buried Walls and Cavities. *Archaeometry* 6:89–92.
- ANDERSON, J.  
1969 A New Technique for Archaeological Field Measuring. *Norwegian Archaeological Review* 2:68–77.
- ARNOLD, J.B., III  
1974 A Magnetometer Survey of the 19th Century Steamboat *Black Cloud*. *Texas Archaeological Society Bull.* 45:225–230.  
1975 A Marine Archaeological Application of Automated Data Acquisition and Processing. *Newsletter of Computer Archaeology* 11(4): 5–12.
- ASCHMANN, H.H., et al  
1975 People: Past and Present. In *Manual of Remote Sensing, Volume II: Interpretation and Applications*, Robert G. Reeves, ed.-in-chief, pp. 1999–2060. Falls Church, Virginia: American Society of Photogrammetry.
- ASPINALL, A., AND J.T. LYMAN  
1968 Induced Polarization as a Technique for Archaeological Surveying. *Prospezioni Archeologiche* 3:91–93.  
1970 An Induced Polarization Instrument for Detection of Near Surfaces Features. *Prospezioni Archeologiche* 5:67–76.
- ASPINALL, A., AND K. PIKARD  
1971 A Direct Reading Earth Resistance Meter. *Prospezioni Archeologiche* 6:21–24.
- ATKINS, H.  
1972 Spying on the Past. *The Sciences* 12(6):22–24.
- ATKINSON, R.J.C.  
1952 Méthodes Électriques de Prospection en Archéologie. In *La Découverte du Passé: Progrès Récents et Techniques Nouvelles en Préhistoire et en Archéologie*, A. Laming, ed. pp. 59–70. Paris: Piccard.  
1953 *Field Archaeology*, 2nd ed. London: Methuen.
- 1956 *Stonehenge*. London: H. Hamilton.  
1963 Resistivity Surveying in Archaeology. In *The Scientist and Archaeology*, E. Pyddoke, ed., pp. 1–30. London: Phoenix House.
- AVERY, T.E.  
1974 Techniques of Aerial Archeology. *International Society of Photogrammetry, Comm. VII, Proceedings*. Banff, Alberta, Canada.  
1977 Prehistoric and Historic Archaeology. In *Interpretation of Aerial Photographs*, 3rd. ed., T.E. Avery, ed., pp. 179–204. Minneapolis: Burgess Publishing Co.
- AVERY, T.E., AND T.R. LYONS  
1978 *Remote Sensing: Practical Exercises on Remote Sensing in Archeology. Supplement No. 1*. Washington, D.C.: Superintendent of Documents, Government Printing Office.
- AVIAS, J.  
1967 Apport de la Photo-Interprétation à la Reconstitution des Peuples Disparus ou Indigènes Anciens en Nouvelle-Caledonie. In *Secrétariat de la Commission* 16:19–24.
- BADEKAS, J. (ed.)  
1975 Photogrammetric Surveys of Monuments and Sites. (Proceedings of the First International Symposium on Photogrammetric Surveys of Monuments and Sites, 1974). *Photogrammetria* 30(3–6).
- BAILLOUD, G., AND P-H. CHOMBART DE LAUWE  
1952 La Photographie Aérienne. In *La Découverte du Passé: Progrès Récents et Techniques Nouvelles en Préhistoire et en Archéologie*, A. Laming, ed., pp. 45–57. Paris: Piccard.
- BAKER, D.  
1975 Problems of Town and Country Planners. In *Aerial Reconnaissance for Archaeology*, D.R. Wilson, ed., pp. 125–131. *Council for British Archaeology Research Report*, No. 12.
- BAKER, W.A.  
1975 Infra-red Techniques. In *Aerial Reconnaissance for Archaeology*, D.R. Wilson, ed., pp. 46–51. *Council for British Archaeology Research Report*, No. 12.
- BANDI, H-G.  
1942 Luftbild und Urgeschichte. *33rd Annuaire*: 145–153. Fraunfeld: Société Suisse de Préhistoire.
- BARADEZ, J.  
1949 *Fossatum Africae. Vue Aérienne de l'Organization Romaine dans le Sud-Algerien*. Paris: Arts et Metiers Graphiques.
- BASCOM, W.R.  
1941 Possible Applications of Kite Photography to Archaeology and Ethnology. *Transactions of the Illinois Academy of Sciences* 34(2):62–63.
- BASS, G.F.  
1965 The Asherah: A Submarine for Archaeology. *Archaeology* 18: 7–14.
- BASS, G.F., AND D.M. ROSENCRANTZ  
1968 *A Diversified Program for the Study of Shallow Water Searching and Mapping Techniques*. Final Report for Contract N00014–67A–0216–0002. Washington, D.C.: U.S. Office of Naval Research.

- 1972 Submersibles in Underwater Search and Photogrammetric Mapping. In *Underwater Archaeology: A Nascent Discipline*, pp. 271–283. Paris: UNESCO.
- BASS, G.F., AND P. THROCKMORTON  
1961 Excavating a Bronze Age Shipwreck. *Archaeology* 14(2):78–87.
- BAUDOIN, M.  
1902 La Photographie Stéréoscopique des Mégalithes. *Société d'Anthropologie de Paris. Bulletins et Mémoires*, Series 5(2): 595–602.
- BEAZELEY, G.A.  
1919 Air Photography in Archaeology. *Geographical Journal* 53:330–335.  
1920 Surveys in Mesopotamia During the War. *Geographical Journal* 55:109–127.
- BENNETT, R.R.  
1931 Cobá by Land and Air. *Art and Archaeology* 31(4):194–206.
- BENSON, D.  
1975 The Application of Aerial Photography in the Oxford Region. In *Aerial Reconnaissance for Archaeology*, D.R. Wilson, ed., pp. 132–136. *Council for British Archaeology Research Reports*, No. 12.
- BENSON, D., AND D. MILES  
1974 Cropmarks near the Sutton Courtenay Site. *Antiquity* 48:223–226.  
1974 *The Upper Thames Valley: An Archaeological Survey of the River Gravels*. Oxford: Oxfordshire Archaeological Unit Survey.
- BERESFORD, M.W.  
1950 Maps and Medieval Landscape. *Antiquity* 24:114–118.  
1951 The Lost Villages of Medieval England. *Geographical Journal* 117:129–147.  
1954 *The Lost Villages of England*. London: Lutterworth Press.
- BERESFORD, M.W., AND J.K.S. ST. JOSEPH  
1958 *Medieval England: An Aerial Survey*, Vol. 2. Cambridge: Cambridge University Press.
- BERLIN, G.L., et al.  
1975 Archaeological Field Patterns Revealed in North-Central Arizona by Aerial Thermography. *The American Society of Photogrammetry, 1975, Proceedings*: 231–243.
- BEVAN, B.  
1973 *Stereo Photography for the Archaeologist: An Extra Dimension for Records and Education* (a report from the Museum Applied Science Center for Archaeology (MASCA), University Museum). Philadelphia: University of Pennsylvania.  
1975 A Magnetic Survey at Les Forges du Saint-Maurice. *MASCA Newsletter* 11(2). Philadelphia: Museum Applied Science Center for Archaeology, University of Pennsylvania.  
1975 An Introduction to Stereo Photography. Appendix to Elevated and Airborne Photogrammetry and Stereo Photography, J.H. Whittlesey. In *Photography in Archaeological Research*, E. Harp, Jr., ed., pp. 259–263. Albuquerque: University of New Mexico Press.
- 1975 Aerial Photography for the Archaeologist (a report from the Museum Applied Science Center for Archaeology (MASCA), University Museum). Philadelphia: University of Pennsylvania.
- BEVAN, B., AND J. KENYON  
1975 Ground-penetrating Radar for Historical Archaeology. *MASCA Newsletter* 11(2). Philadelphia: Museum Applied Science Center for Archaeology, University of Pennsylvania.
- BIDWELL, T.C.  
1975 College and University Sources of Remote Sensing Information. *Photogrammetric Engineering and Remote Sensing* 41(10):1273–1284.
- BIÖRNSTAD, A.  
1955 Fotografering från Mast. *Svenska Museer* 1:14–16.
- BLACK, G.A., AND R.B. JOHNSTON  
1962 A Test of Magnetometry as an Aid to Archaeology. *American Antiquity* 28(2):199–205.
- BORCHERS, P.E.  
1960 Choice of Station and Control for Efficient Orientation and Plotting in Architectural Photogrammetry. *Photogrammetric Engineering* 26(5):713–720.  
1964 Architectural Photogrammetry in Restoration. *Building Research* 1(5):18–19.  
1975 Photogrammetry of the Indian Pueblos of New Mexico and Arizona. *Photogrammetria* 30(3–6):189–196.  
1976 *Terrestrial Photogrammetry of Cliff Dwellings in the Canyons of Arizona*. Report on file at the Remote Sensing Division, SW Cultural Resources Center, National Park Service, Albuquerque, New Mexico.
- BOURAS, C.  
1975 Particular Difficulties in the Conservation and Study of Greek Historical Monuments. *Photogrammetria* 30(3–6):99–105.
- BOWEN, H.C.  
1962 Air Photographs and the Study of Ancient Fields in England. *International Archives of Photogrammetry* 14:411–418.  
1975 Air Photography and the Development of the Landscape in Central Parts of Southern Britain. In *Aerial Reconnaissance for Archaeology*, D.R. Wilson, ed., pp. 103–118. *Council for British Archaeology Research Report*, No. 12.
- BRADFORD, J.S.P.  
1947 Buried Landscapes in Southern Italy. *Antiquity* 21:58–72.  
1947 Etruria from the Air. *Antiquity* 21:74–83.  
1947 A Technique for the Study of Centuriation. *Antiquity* 21:197–204.  
1948 Humanity from the Air. *Archaeological News Letter* 1(4):1–5.  
1949 Buried Landscapes in Southern Italy. *Antiquity* 23:58–72.  
1950 First Farmers in South Italy: Village Life 4000 Years Ago; History and Prehistory Revealed by Aerial Photography. *Illustrated London News* 216:674–675.  
1950 The Apulia Expedition: An Interim Report. *Antiquity* 24:84–95.  
1952 Progress in Air Archaeology. *Discovery* 13(6):177–181.



- 1956 Mapping Two Thousand Tombs from the Air: How Aerial Photography Plays its Part in Solving the Riddle of the Etruscans. *Illustrated London News* 228:736–738.
- 1957 *Ancient Landscapes: Studies in Field Archaeology*. London: G. Bell and Sons.
- 1957 The Ancient City of Arpi in Apulia. *Antiquity* 31:167–169.
- BRADFORD, J.S.P., AND P.R. WILLIAMS-HUNT  
1946 Siticulosa Apulia. *Antiquity* 20:191–200.
- BREINER, S.  
1965 The Rubidium Magnetometer in Archaeological Exploration. *Science* 150:185–193.  
1973 *Applications Manual for Portable Magnetometers*. Palo Alto: Geometrics.
- BREINER, S., AND M.D. COE  
1972 Magnetic Exploration of the Olmec Civilization. *American Scientist* 60:566–575.
- BROADBENT, S.M.  
1968 Crop Marks. *Nawpa Pacha* 6:135–147.
- BRUCE-MITFORD, R.L.S. (ed.)  
1956 *Recent Archaeological Excavations in Britain. Selected Excavations, 1939–1955*. Contains a chapter on recent air-reconnaissance. London: Kegan Paul.
- BRUDER, J.S., E.G. LARGE, AND B.L. STARK  
1975 A Test of Aerial Photography in an Estuarine Mangrove Swamp in Veracruz, Mexico. *American Antiquity* 40(3):330–337.
- BUETTNER-JANUSCH, J.  
1954 Use of Infrared Photography in Archaeological Field Work. *American Antiquity* 20(1):84–87.
- CAILLEMER, A., AND R. CHEVALLIER  
1953 *Atlas des Centuriations Romaines de Tunisie*. Paris: IGN.
- CALZA, G.  
1920 Aviation and Archaeology. *Art and Archaeology* 10(4):148–150.
- CAMERON, H.L.  
1958 History from the Air. *Photogrammetric Engineering* 24(3):366–375.
- CAPPER, J.E.  
1907 Photographs of Stonehenge as Seen from a War Balloon. *Archaeologia* 60:571.
- CARABELLI, E.  
1966 A New Tool for Archaeological Prospecting: The Sonic Stereoscope for the Detection of Cavities. *Prospezioni Archeologiche* 1:25–35.  
1968 Ricerca Delle Cavità Superficiali con l'Impiego di Vibratori: Primi Esperimenti. *Prospezioni Archeologiche* 3:37–43.
- CARABELLI, E., AND F. BRANCALEONI  
1968 Rilievo Electrico di Tombe a Camera con Dispositivo a Doppio Dipolo. *Prospezioni Archeologiche* 3:55–60.
- CARBONNELL, M.  
1965 Les Relèves Photogrammétriques des Monuments de Nubie. *Archaeologia* 3:66–72.  
1974 Historic Center Conservation. *Photogrammetric Engineering* 40(9):1059–1070.  
1975 The Photogrammetric Techniques Applied to (French and Greek) Historic Centres. *Photogrammetria* 30(3–6):175–180.
- 1975 Technical Progress in Architectural Photogrammetry. *Photogrammetric Engineering and Remote Sensing* 41(12):1513–1517.
- CARRELL, T., S. RAYL, AND D. LENIHAN  
1976 *The Effects of Freshwater Inundation of Archaeological Sites Through Reservoir Construction: A Literature Search*. Washington, D.C.: National Park Service.
- CARSON, H.H.  
1962 A Seismic Survey at Harpers Ferry. *Archaeometry* 5:119–122.
- CASSON, S.  
1936 Archaeology from the Air. *Scientific American* 155:130–132.
- CHART, D.A.  
1930 Air-Photography in Northern Ireland. *Antiquity* 4(16):453–459.
- CHEVALLIER, R.  
1957 *Bibliographie des Applications Archéologiques de la Photographie Aérienne*. Rome: Lericci Foundation. [Rev. ed. *Bulletin d'Archéologie Marocaine*, Tome II (supplement).]  
1962 L'Archéologie Aérienne en France. *International Archives of Photogrammetry* 14:401–407.  
1962 *L'Archéologie Aérienne en France*. Rome: Lericci Foundation.  
1963 Ancient and Modern Colonizations. *Photo Interpretation* 63:43–49.  
1964 *L'Avion à la Découverte du Passé*. Paris: Artheme Fayard.  
1964 Détections Aériennes dans le Sud du Département de l'Aisne. *Colloque International d'Archéologie Aérienne* 1962:95–108.  
1964 *L'Étude des Modes Anciens d'Utilization des Teers (Archéologie Agraire) par la Photographie Aérienne et Son Intérêt Pratique*. Paris.  
1965 La Révélation des Paysages Ensevelis. *Archéologia* 3:31–37.  
1965 Photographie Aérienne en Archéologie. In *Photographie Aérienne: Panorama Intertechnique*, R. Chevallier, ed., pp. 97–105. Paris: Gauthier-Villars.
- CHEVALLIER, R., ed.  
1965 *Photographie Aérienne: Panorama Intertechnique*. Paris: Gauthier-Villars.
- CHEVALLIER, R., C. MONGUILAN, R. AGACHE, AND R. GOGUEY  
1969 Archéologie Aérienne en France: Recherches Recentes. *Photogrammetria* 24(5–6):199–221.
- CHOMBART DE LAUWE, P-H.  
1948 Vision Aérienne du Monde. In *La Découverte Aérienne du Monde*, P-H. Chombart de Lauwe, ed., pp. 19–56. Paris: Horizons de France.  
1948 L'Évolution des Rapports entre l'Homme et le Milieu. In *La Découverte Aérienne du Monde*, P-H. Chombart de Lauwe, ed., pp. 209–248. Paris: Horizons de France.  
1948 La Vision Aérienne et les Civilisations Disparues. In *La Découverte Aérienne du Monde*, P-H. Chombart de Lauwe, ed., pp. 249–280. Paris: Horizons de France.  
1948 Exemple d'Exploration d'une Vue Aérienne. In *La Découverte Aérienne du Monde*, P-H. Chombart de Lauwe, ed., pp. 402–406. Paris: Horizons de France.

- 1951 *Photographies Aériennes: l'Étude de l'Homme sur la Terre*. Paris: A. Colin.
- 1951 *Photographies Aériennes, Méthodes et Procédés d'Interpretation*. In *La Découverte du Passé: Progrès Récents et Techniques Nouvelles en Préhistoire et en Archéologie*, A. Laming, ed. Paris: Piccard.
- 1952 *Paris et l'Agglomération Parisienne: L'Étude de l'Espace dans Une Grande Cité, Volume II: Méthodes de Recherche*. Paris: Presses Universitaires de France.
- 1956 *La Fotografía Aérea: Métodos, Procedimientos, Interpretación, el Estudio del Hombre Sobre la Tierra*. Barcelona: Ediciones Omega.
- 1959 Le Milieu et l'Étude Sociologique de Cas Individuels. *Informations Sociales* 2:41–54.
- 1960 Sur l'Évolution de l'Habitation et le Changement Social dans la Société Industrielle. In *Famille et Habitation, Volume II: Un Essai d'Observation Experimentale*, P.-H. Chombart de Lauwe et al., eds., pp. 11–31. Paris: Centre National de la Recherche Scientifique.
- 1965 *Des Hommes et des Villes*. Paris: Editions Payot.
- n.d. *Bibliographie de la Découverte Aérienne Appliquée aux Sciences Humaines*. Paris: L'École Pratique des Hautes Études.
- CHOMBART DE LAUWE, P.-H. (ed.)
- 1948 *La Découverte Aérienne du Monde*. Paris: Horizons de France.
- CLADAS, C.
- 1975 La Découverte de Civilisations Anciennes à l'Aide de la Photogrammétrie. *Photogrammetria* 30(3–6): 213–218.
- CLARK, A.J.
- 1968 A Square Array for Resistivity Surveying. *Prospezioni Archeologiche* 3:111–114.
- 1969 Resistivity Surveying. In *Science in Archaeology*, D. Brothwell and E. Higgs, eds., pp. 695–707. London: Thames and Hudson.
- CLARK, A.J., AND D. HADDON-REECE
- 1972 An Automatic Recording System Using the Plessey Fluxgate Magnetometer. *Prospezioni Archeologiche* 7:107–114.
- CLAUSSEN, C.J.
- 1966 The Proton Magnetometer: Its Use in Plotting the Distribution of the Ferrous Components of a Shipwreck Site as an Aid to Archaeological Interpretation. *Florida Anthropologist* 19(2):77–84.
- 1967 A New Underwater Excavating System for the Archaeologist. *Conference on Historic Site Archaeology Papers* 2(1):98–106.
- COCHRANE-PATRICK, C.K.
- 1931 Aerial Reconnaissance Mapping in Northern Rhodesia. *Geographical Review* 21:213–220.
- 1931 The Aerial Photograph as an Aid to Survey. *South African Survey Journal* 3:367–377.
- COE, M.D.
- 1974 Photogrammetry and the Ecology of the Olmec Civilizations. In *Aerial Photography in Anthropological Field Research*, E.Z. Vogt, ed., pp. 1–13. Cambridge: Harvard University Press.
- COLANI, C.
- 1966 A New Type of Locating Device, I—The Instrument. *Archaeometry* 9:3–8.
- COLANI, C., AND M.J. AITKEN
- 1966 A New Type of Locating Device, II—Field Trials. *Archaeometry* 9:9–19.
- 1966 Utilization of Magnetic Viscosity Effects in Soils for Archaeological Prospection. *Nature* 212:1446–1447.
- COLE, J.R.
- 1972 Time-lapse Photography in Archaeological Data Recording. *Plains Anthropologist* 17(58):347–349.
- COLLIER, G. A.
- 1974 The Impact of Airphoto Technology on the Study of Demography and Ecology in Highland Chiapas. In *Aerial Photography in Anthropological Field Research*, E.Z. Vogt, ed., pp. 78–93. Cambridge: Harvard University Press.
- COLLIER, J., JR.
- 1957 Photography in Anthropology: A Report on Two Experiments. *American Anthropologist* 59:843–859.
- 1967 *Visual Anthropology: Photography as a Research Method*. New York: Holt, Rinehart and Winston.
- COLWELL, R.N.
- 1956 The Taking of Helicopter Photographs for Use in Photogrammetric Research and Training. *Photogrammetric Engineering* 22:613–621.
- 1964 Aerial Photography—A Valuable Sensor for the Scientist. *American Scientist* 52:16–49.
- COLWELL, R.N. (ed.)
- 1960 *Manual of Photographic Interpretation*. Washington, D.C.: American Society of Photogrammetry.
- CONKLIN, H.C.
- 1974 Ethnographic Research in Ifugao. In *Aerial Photography in Anthropological Field Research*, E.Z. Vogt, ed., pp. 140–159. Cambridge: Harvard University Press.
- CONLON, V.M.
- 1973 *Camera Techniques in Archaeology*. London: John Baker.
- CONNAH, G., P. EMERSON, AND J. STANLEY
- 1976 Is There a Place for the Proton Magnetometer in Australian Field Archaeology? *Mankind* 10(3):151–155.
- COOK, J.P., AND W.J. STRINGER
- 1974 *Feasibility Study for Locating Archaeological Village Sites by Satellite Remote Sensing Techniques*. Final report for Contract NAS5-21833, ERTS Project 110-N, prepared for the National Aeronautics and Space Administration. On file at Geophysical Institute, University of Alaska, College, Alaska.
- COOKSON, M.B.
- 1946 Archaeological Photography. *Ancient India* 2:134–137.
- 1951 Photography in Archaeology. *Archaeological News Letter* 3:191–195; 4:11–13, 23–26.
- 1954 *Photography for Archaeologists*. London: Max Parrish.
- CRAWFORD, O.G.S.
- 1923 Air Survey and Archaeology. *Geographical Journal* 61:342–366.
- 1924 Archaeology from the Air. *Nature* 114:580–582.
- 1924 Air Survey and Archaeology. *Ordnance Survey Professional Papers*, No. 7.

- 1927 Lyonesse. *Antiquity* 1(1):5–14.
- 1929 Durrington Walls. *Antiquity* 3:49–59.
- 1929 Woodbury: Two Marvelous Air-Photographs. *Antiquity* 3:452–455.
- 1929 Air Photography for Archaeologists. *Ordnance Survey Professional Papers*, No. 12.
- 1929 Air Photographs of the Middle East. *Geographical Journal* 13:497–512.
- 1933 Some Recent Air Discoveries. *Antiquity* 7:290–296.
- 1934 The Mile Ditches at Royston. *Antiquity* 8:216–218.
- 1938 Luftbildaufnahmen von Archäologischen Bodendenkmalern in England. In *Luftbild und Vorgeschichte*, O.G.S. Crawford, et al., *Luftbild und Luftbildmessung*, No. 16. Berlin: Lillienthal-Gesellschaft für Luftfahrtforschung, Hansa-Luftbild.
- 1939 Air Reconnaissance of Roman Scotland. *Antiquity* 13:280–292.
- 1939 Archaeological Air Photographs in England. *Geographical Review* 29:671–672.
- 1950 Rhodesian Cultivation Terraces. *Antiquity* 24:96–98.
- 1953 *Said and Done: The Autobiography of an Archaeologist*. New York: Humanities Press.
- 1953 *Archaeology in the Field*. London: Phoenix House.
- 1954 A Century of Air-Photography. *Antiquity* 28:206–210.
- 1957 Archaeology from the Air. In *A Book of Archaeology*, M. Wheeler, ed., pp. 83–89. London: Cassell.
- CRAWFORD, O.G.S., AND A. KEILLER  
1928 *Wessex from the Air*. Oxford: Clarendon Press.
- CUMMER, W.W.  
1974 Photogrammetry at Ayia Irini on Keos. *Journal of Field Archaeology* 1(3–4):385–387.
- CUNNINGTON, M.E.  
1927 Prehistoric Timber Circles. *Antiquity* 1:92–94.
- CURWEN, E.C.  
1927 Prehistoric Agriculture in Britain. *Antiquity* 1:261–289.  
1928 Air Photography and Economic History: The Evolution of the Cornfield. *Economic History Society Bibliographies and Pamphlets*, No. 2. London: London School of Economics.  
1930 Neolithic Camps. *Antiquity* 4:22–54.
- DABROWSKI, K., AND R.E. LININGTON  
1967 Test Use of a Proton Magnetometer near Kalisz, Poland. *Prospezioni Archeologiche* 2:29–42.
- DECHERT, P.  
1975 Communication, Photography, and the Archaeologist. In *Photography in Archaeological Research*, E. Harp., Jr., ed., pp. 345–364. Albuquerque: University of New Mexico Press.
- DECKER, K. V., AND I. SCOLLAR  
1962 Iron Age Square Enclosures in Rhineland. *Antiquity* 36:175–178.
- DE LEON, P.G.  
1974 *Recuperación de Datos y la Fotografía Aérea*. 41st Congreso Internacional de Americanistas, Simposio de Arqueología. México, D.F.
- DENEVAN, W.  
1966 The Aboriginal Cultural Geography of the Llanos de Mojas. *Ibero-Americana* 48.  
1970 Aboriginal Drained Field Cultivation in the Americas. *Science* 169:647–654.
- DETWELLER, A.H.  
1948 *Manual of Archaeological Surveying*. New Haven: American Schools of Oriental Research.
- DEUEL, L.  
1969 *Flights into Yesterday: The Story of Aerial Archaeology*. New York: St. Martin's Press.
- DI PESO, C.C.  
1975 Problems of Site Photography. In *Photography in Archaeological Research*, E. Harp, Jr., ed., pp. 211–222. Albuquerque: University of New Mexico Press.
- DRAGER, D.L.  
1976 Anasazi Population Estimates With the Aid of Data Derived from Photogrammetric Maps. In *Remote Sensing Experiments in Cultural Resource Studies: Non-destructive Methods of Archeological Exploration, Survey, and Analysis*, T.R. Lyons, assembler, pp. 157–171, *Reports of the Chaco Center*, No. 1. Albuquerque: Chaco Center, National Park Service and University of New Mexico.
- DRAGER, D.L., AND R.W. LOOSE  
1977 An Ecological Stratification of the Southern Pajarito Plateau. In *An Assessment of Cultural Resources in Cochiti Reservoir*, Vol. 1, J. Biella and D. Chapman, eds., pp. 31–38. Albuquerque: University of New Mexico Press.
- DUNK, A.J.  
1962 An Electrical Resistance Survey Over a Romano-British Villa Site. *Bonner Jahrbücher* 162:272–276.
- DUNNELL, R.C.  
n.d. *Remote Sensing and Photogrammetry in Intrasite Sampling Designs*. Report on file at the Department of Anthropology, University of Washington, Seattle.
- EBERT, J.I.  
1977 Remote Sensing Within an Archeological Research Framework: Methods, Economics, and Theory. In *Aerial Remote Sensing Techniques in Archeology*, T.R. Lyons and R.K. Hitchcock, eds., pp. 169–201. *Reports of the Chaco Center*, No. 2. Albuquerque: Chaco Center, National Park Service and University of New Mexico.
- EBERT, J.I., M.C. EBERT, AND R.K. HITCHCOCK  
1976 *Anthropological, Archaeological, and Ecological Investigations in the Central District of Botswana II: January-June 1976*. Report on File at the Ministry of Local Government and Lands, Republic of Botswana, Gaborone, Botswana.
- EBERT, J.I., AND R.K. HITCHCOCK  
1975 The Mysterious Highways of Chaco Canyon. *Horizon* 17(4):48–53.  
1977 The Role of Remote Sensing. In *Settlement and Subsistence Along the Lower Chaco River: The CGP Survey*, C.A. Reher, ed., pp. 191–215. Albuquerque: University of New Mexico Press.

- EBERT, J.I., AND T.R. LYONS  
 1976 The Role of Remote Sensing in a Regional Archeological Research Design: A Case Study. In *Remote Sensing Experiments in Cultural Resource Studies: Non-destructive Methods of Archeological Exploration, Survey, and Analysis*, T.R. Lyons, assembler, pp. 5-9, *Reports of the Chaco Center*, No. 1. Albuquerque: Chaco Center, National Park Service and University of New Mexico.
- 1978 *Prehistoric Irrigation Canals Identified from Skylab III and Landsat Imagery in Phoenix, Arizona*. Report on file at the Remote Sensing Division, SW Cultural Resources Center, National Park Service, Albuquerque, New Mexico.
- EBERT, M.C., R.K. HITCHCOCK, AND J.I. EBERT  
 1976 *Anthropological, Archaeological, and Ecological Investigations in the Central District of Botswana, III: July-November 1976*. Report on file at the Ministry of Local Government and Lands, Republic of Botswana, Gaborone, Botswana.
- EDEINE, B.  
 1956 Une Méthode Pratique pour la Détection Aérienne des Sites Archéologiques, en Particulier par la Photographie sur Films en Couleurs et sur Films Infrarouges. *Bulletin de la Société Préhistorique Française* 53(9):540-546.
- EDGERTON, H.E.  
 1963 Sub-bottom Penetrations in Boston Harbor. *Journal of Geophysical Research* 68(9):2753-2760.
- 1972 Underwater Archaeology: Sonar Surveys in Greece. *MASCA Newsletter* 8(1):3. Philadelphia: Museum Applied Science Center for Archaeology, University of Pennsylvania.
- ENGL, C.E. (ed.)  
 1968 *Photography for the Scientist*. New York: Academic Press.
- ENGELBACH, R.  
 1929 The Aeroplane and Egyptian Archaeology. *Antiquity* 3:470-473.
- ERLANDSON, J.P., AND S.A. VERESS  
 1974 Contemporary Problems in Terrestrial Photogrammetry. *Photogrammetric Engineering* 40(9):1079-1085.
- ERSKINE, C.A.  
 1965 Photographic Documentation in Archaeological Research: Increasing the Information Content. *Science* 148:1089-1090.
- ESTES, J.E., AND L.W. SINGER  
 1974 *Remote Sensing: Techniques for Environmental Analysis*. Santa Barbara, California: Hamilton Publishing Company.
- EVENARI, M., et al.  
 1961 Ancient Agriculture in the Negev. *Science* 133:979-996.
- FAGAN, B.M.  
 1959 Cropmarks in Antiquity. *Antiquity* 33:279-281.
- FANALE, R.  
 1974 *Utilization of ERTS-I Imagery in the Analysis of Settlement and Land Use of the Dogon of Mali*. Unpublished M.A. thesis, Catholic University, Washington, D.C.
- FANT, J.F., AND W.G. LOY  
 1972 Surveying and Mapping. In *The Minnesota Messenia Expedition: Reconstructing a Bronze Age Regional Environment*, W.A. McDonald and G.R. Rapp, eds. Minneapolis: University of Minnesota Press.
- FITZHUGH, W.W., JR.  
 1967 *Environmental Analysis in Air Photo Archaeology*. Manuscript, unpublished. On file at Peabody Museum, Harvard University, Cambridge, Massachusetts.
- FLOYD, B.N.  
 1966 Landscapes from the Air. *Journal of Geography* 65(3):125-128.
- FORD, J.A., AND G.R. WILLEY  
 1949 Surface Survey of the Viru Valley, Peru. I. Viru Valley: Background and Problems. *American Museum of Natural History Anthropological Papers* 43(1).
- FOSTER, E.J.  
 1968 Further Developments of the Pulsed Induction Metal Detector. *Prospezioni Archeologiche* 3:95-99.
- 1970 A Diver-operated Underwater Metal Detector. *Archaeometry* 12(2):161-166.
- FOSTER, E., AND T. HACKENS  
 1969 Decco Metal Detector Survey on Delos. *Archaeometry* 11:165-172.
- FOSTER, F.W.  
 1951 Some Aspects of the Field Use of Aerial Photographs by Geographers. *Photogrammetric Engineering* 17:771-776.
- FOWLER, M.L.  
 1977 Aerial Archeology at the Cahokia Site. In *Aerial Remote Sensing Techniques in Archeology*, T.R. Lyons and R.K. Hitchcock, eds., pp. 65-80, *Reports of the Chaco Center*, No. 2. Albuquerque: Chaco Center, National Park Service and University of New Mexico.
- FOWLER, P.J.  
 1975 The Distant View. In *Aerial Reconnaissance for Archeology*, D.R. Wilson, ed., pp. 154-158. *Council for British Archaeology Research Reports*, No. 12.
- FREY, D.  
 1972 Sub-bottom Survey of Porto Longo Harbor, Peloponnesus, Greece. *International Journal of Nautical Archeology and Underwater Exploration* 1:170-175.
- FROST, H.  
 1969 On the Plotting of Vast and Partly Submerged Harbor Works from Aerial and Underwater Photographs. In *Surveying in Archeology Underwater*, P. Throckmorton et al., eds., pp. 32-48. London: Bernard Quaritch.
- GHAZALI, N.  
 1975 Photogrammetric Survey of the Masjed-e-Jame Esfahan. *Photogrammetria* 30(3-6):219-235.
- GILLIE, D.  
 1956 Location of Archaeological Sites by Air. *Explorers Journal* 34(2-4):15-18.
- GILHIO, D.A.  
 1970 Use of Infrared Photography in Archeology. *Colorado Anthropologist* 2(2):13-19.
- GODDARD, G.  
 1969 *Overview*. New York: Doubleday and Company.

- GOGUEY, R.  
1967 Recherches Aériennes sur les Structures Archéologiques Rurales et Urbaines et Leur Influence sur le Paysage Actuel en Bourgogne. In *Secrétariat de la Commission* 16:35-40.  
1968 *De l'Aviation à l'Archéologie*. Paris: Editions Technip.
- GONZALEZ, A.R.  
1956 La Fotografía y el Reconocimiento Aéreo en las Investigaciones Arqueológicas del n.o. Argentino. *Anales de Arqueología y Ethnológica* 12:41-63.
- GOODCHILD, R.G.  
1952 Euesperides: A Devastated City Site. *Antiquity* 26:208-212.
- GOODYEAR, F.H.  
1971 Archaeological Prospecting. *Archaeological Site Science*, F.H. Goodyear, Part 4. New York: American Elsevier Publishing Company.
- GOSSEN, G.H.  
1974 Another Look at World View: Aerial Photography and Chamula Cosmology. In *Aerial Photography in Anthropological Field Research*, E.Z. Vogt, ed., pp. 112-124. Cambridge: Harvard University Press.
- GREEN, J.N.  
1970 A New Sea-going Magnetometer Detector Head. *Archaeometry* 12:167-172.
- GREEN, J.N., et al.  
1971 Simple Underwater Photogrammetric Techniques. *Archaeometry* 13(2):221-232.
- GREEN, J.N., E.T. HALL, AND M.L. KATZEV  
1967 Survey of a Greek Shipwreck off Kyrenia, Cyprus. *Archaeometry* 10:46-56.
- GREEN, J.N., AND C. MARTIN  
1970 Metal Detector Survey of the Wreck of the Armada Ship "Santa Maria de la Rosa." *Prospezioni Archeologiche* 5:95-100.  
1970 Metal Detector Survey at Dun an Oir. *Prospezioni Archeologiche* 5:101-106.
- GREEN, N.E.  
1955 *Aerial Photography in the Analysis of Urban Structures: Ecological and Social*. Unpublished Ph.D. dissertation, University of North Carolina, Chapel Hill, North Carolina.  
1957 Aerial Photographic Interpretation and the Social Structure of the City. *Photogrammetric Engineering* 23(1):89.
- GREEN, N.E., AND R.B. MONIER  
1959 Aerial Photographic Interpretation of the Human Ecology of the City. *Photogrammetric Engineering* 25(5):770-773.
- GRIAULE, M.  
1937 L'Emploi de la Photographie Aérienne dans la Recherche Scientifique. *L'Anthropologie* 40:469-475.  
1946 *Emploi de l'Aviation dans la Recherche Ethnographique*. Paris: National Congress of French Aviation.  
1948 L'Ethnographie. In *La Découverte Aérienne du Monde*, P-H. Chombart de Lauwe, ed., pp. 177-208. Paris: Horizons de France.
- GRIMES, W.F. (ed)  
1951 *Aspects of Archaeology in Great Britain and Beyond: Essays Presented to O.G.S. Crawford*. London: H.W. Edwards.
- GRUBER, K.  
1975 A Photogrammetric Equipment for Archaeological Survey. *Photogrammetria* 30(3-6): 127-142.
- GRÜTTER, H.  
1962 Photogrammetrie im Dienste der Archäologie. *Ur-Schweiz* 26(1):1-5.
- GUMERMAN, G.J.  
1971 Archaeology and Aerial Photography. *Proceedings of the Second ARETS Symposium*: 206-212. Tucson: University of Arizona.  
1971 The Identification of Archaeological Sites by False Color Infrared Aerial Photography. *National Technical Information Service Report* PB2-04540.  
1971 The Distribution of Prehistoric Population Aggregates. In *Proceedings of the Southwestern Anthropological Research Group*, G.P. Gumerman, ed. *College Anthropological Reports*, No. 1. Prescott, Arizona: Prescott College Press.
- GUMERMAN, G.J., AND R.R. JOHNSON  
1971 Prehistoric Human Population Distribution in a Biological Transition Zone. In *The Distribution of Prehistoric Population Aggregates*, G.J. Gumerman, pp. 82-102. *Proceedings of the Southwestern Anthropological Research Group*, G.J. Gumerman, ed. *Prescott College Anthropological Reports*, No. 1. Prescott, Arizona: Prescott College Press.
- GUMERMAN, G.J., AND L.D. KRUCKMAN  
1977 The Unrealized Potential of Remote Sensing in Archeology. In *Aerial Remote Sensing Techniques in Archeology*, T.R. Lyons and R.K. Hitchcock, eds., pp. 15-33. *Reports of the Chaco Center*, No. 2. Albuquerque: Chaco Center, National Park Service and University of New Mexico.
- GUMERMAN, G.J., AND T.R. LYONS  
1971 Archaeological Methodology and Remote Sensing. *Science* 1972: 126-132.
- GUMERMAN, G.J., AND J.A. NEELY  
1972 An Archaeological Survey of the Tehuacan Valley, Mexico: A Test of Color Infrared Photography. *American Antiquity* 37(4): 520-527.
- GUTKIND, E.A.  
1952 *Our World from the Air: An International Survey of Man and His Environment*. London: Chatto and Windus.  
1956 *Our World from the Air: Conflict and Adaptation*. In *Man's Role in Changing the Face of the Earth*, W.L. Thomas, ed., pp. 1-44. Chicago: University of Chicago Press.
- GUY, P.L.O.  
1932 Balloon Photography and Archaeological Excavation. *Antiquity* 6:148-155.
- HACKENBERG, R.A.  
1974 Ecosystemic Channeling: Cultural Ecology from the Viewpoint of Aerial Photography. In *Aerial Photography and Anthropological Field Research*, E.Z. Vogt, ed., pp. 28-39. Cambridge: Harvard University Press.

- HAEFNER, H.  
1967 Airphoto Interpretation of Rural Land Use in Western Europe. *Photogrammetria* 22(4):143-152.
- HAJDSCHKI, I.  
1975 Terrestrisch-Photogrammetrische Methoden Zum Aufnehmen von Architektur- und Archäologie-Objekten. *Photogrammetria* 30(3-6):143-146.
- HALL, E.T.  
1962 Some Notes on the Design and Manufacture of Detector Heads for Proton Magnetometers. *Archaeometry* 5:139-145.  
1966 The Use of the Proton Magnetometer in Underwater Archaeology. *Archaeometry* 9:32-44.  
1966 A Sea-going Sonar Position-fixing System. *Archaeometry* 9:45-50.  
1970 Survey Techniques in Underwater Archaeology. *Royal Society of London, Philosophical Transactions, Series A*, 269:121-124.
- HALL, R.L.  
1968 The Goddard-Ramey Cahokia Flight: A Pioneering Aerial Photographic Survey. *The Wisconsin Archaeologist* 49(2):75-79.
- HALLERT, B.  
1971 Photogrammetry and Culture History. *Norwegian Archaeological Review* 4:28-36.
- HAMMOND, A.L.  
1971 Tools for Archaeology: Aids to Studying the Past. *Science* 173:511-512.
- HAMMOND, N.  
1973 A Giant Scale for Long-distance Photography. *Antiquity* 47:144.
- HAMMOND, P.C.  
1974 Magnetometer/Resistivity Prospecting at Petra, Jordan in 1973. *Journal of Field Archaeology* 1(3-4):397.
- HAMPL, F.  
1957 Archäologische Feldphotographie. *Archaeologica Austriaca* 22:54-64.
- HAMPL, F., AND V. FRITSCH  
1959 Geoelektrische Messungen in Ihrer Anwendung für die Archäologie. *Technische Beiträge zur Archäologie, Mainz* 1:116.
- HAMPTON, J.N.  
1974 An Experiment in Multispectral Air Photography for Archaeological Research. *Photogrammetric Record* 8(43):37-64.  
1975 An Experiment in Multispectral Air Photography for Archaeological Research. In *Photography in Archaeological Research*, E. Harp, Jr., ed., pp. 157-210. Albuquerque: University of New Mexico Press.  
1975 The Organization of Aerial Photography in Britain. In *Aerial Reconnaissance for Archaeology*, D.R. Wilson, ed., pp. 118-125. *Council for British Archaeology Research Report*, No. 12.
- HARKNETT, M.R.  
1969 A Proton Magnetometer with Solid State Switching. *Archaeometry* 11:173-177.
- HARNER, M.J.  
1953 Gravel Pictographs of the Lower Colorado River Region. *Reports of the University of California Archaeological Research Facility* 20:1-32.
- HARP, E., JR.  
1966 Anthropology and Remote Sensing. *Proceedings of the Fourth Symposium on Remote Sensing of Environment: 727-279*. Ann Arbor: University of Michigan.  
1967 Experimental Air Photo Interpretation in Archaeology. *Photogrammetric Engineering* 33(6):676.  
1968 Anthropological Interpretation from Color. In *Manual of Color Aerial Photography*, J.T. Smith ed., p. 385. Falls Church, Virginia: American Society of Photogrammetry.  
1968 Optimum Scales and Emulsions in Air Photo Archaeology. *Proceedings, VIIIth International Congress of Anthropological and Ethnological Sciences, III: 163-165*. Tokyo: Science Council of Japan.  
1974 Threshold Indicators of Culture in Air Photo Archaeology: A Case Study in the Arctic. In *Aerial Photography in Anthropological Field Research*, E.Z. Vogt., ed., pp. 14-27. Cambridge: Harvard University Press.  
1975 The Objectives of Archaeological Photography. In *Photography in Archaeological Research*, E. Harp, Jr., ed., pp. 3-13. Albuquerque: University of New Mexico Press.  
1975 Basic Considerations in the Use of Aerial Photography for Archaeological Research. In *Photography in Archaeological Research*, E. Harp, Jr., ed., pp. 97-116. Albuquerque: University of New Mexico Press.  
1977 Aerial Photography for the Arctic Archeologist. In *Aerial Remote Sensing Techniques in Archeology*, T.R. Lyons and R.K. Hitchcock, eds., pp. 51-64. *Reports of the Chaco Center*, No. 2. Albuquerque: Chaco Center, National Park Service and University of New Mexico.
- HARP, E., JR. (ed.)  
1975 *Photography in Archaeological Research*. Albuquerque: University of New Mexico Press.
- HARRELL, D.E., N.C. CRAWFORD, AND R.W. PEPLIES  
1966 Remote Sensor Returns as Historical Documents. *Proceedings of the Fourth Symposium on Remote Sensing of Environment: 599-604*. Ann Arbor: University of Michigan.
- HAWKES, C.  
1929 The Roman Siege of Masada. *Antiquity* 3:195-213.  
1939 The Roman Camp Site Near Castor on the Nene. *Antiquity* 13:178-190.
- HAWKINS, G.S.  
1969 *Final Scientific Report for the National Geographic Society Expedition: Ancient Lines in the Peruvian Desert*. Washington, D.C.: Smithsonian Institution Astrophysical Laboratory.
- HEATH, G.R.  
1957 Correlations between Man's Activity and His Environment Which May Be Analyzed in Photo Interpretation. *Photogrammetric Engineering* 13(1):108-114.
- HESSE, A.  
1966 Perfectionement des Applications Archéologiques de la Prospection Électrique. *Bulletin de la Société Préhistoire Française* 63.  
1966 The Importance of Climatologic Observations in Archaeological Prospecting. *Prospezioni Archeologiche* 1:11-13.

- 1966 *Prospections Géophysiques a Faible Protondeur: Applications à l'Archéologie*. Paris: Dunod.
- HESTER, T.R., R.F. HEIZER, AND J.A. GRAHAM  
1975 *Field Methods in Archaeology*, 6th ed. Palo Alto: Mayfield Publishing Company.
- HITCHCOCK, R.K.  
n.d. *On the Use of Remote Sensing in Archaeological Site Location*. Report on file at the Remote Sensing Division, Southwest Cultural Resources Center, University of New Mexico, Albuquerque, New Mexico.
- HITCHCOCK, R.K., J.I. EBERT, AND M.C. EBERT  
1975 *Preliminary Anthropological, Archaeological, and Ecological Investigations in the Central District of Botswana*. Report on file at the Ministry of Local Government and Lands, Republic of Botswana, Gaborone, Botswana.
- HITCHCOCK, R.K., *et al.*  
1973 *Archeological Research Strategies: The Chaco Canyon Road Survey*. Report on file at the Remote Sensing Division, Southwest Cultural Resources Center, National Park Service, Albuquerque, New Mexico.
- HOHLE, J.  
1971 Reconstruction of the Underwater Object. *Photogrammetric Engineering* 37(9):948-954.
- HOLE, F., AND R.F. HEIZER  
1973 *An Introduction to Prehistoric Archaeology*, 3rd ed. New York: Holt, Rinehart, and Winston.
- HOLLOWAY, R.R.  
1973 A New Lightweight Bipod Camera Support. *Newsletter of the Association for Field Archaeology* 1(2).
- HOLZ, R.L. (ed.)  
1973 *The Surveillant Science: Remote Sensing of the Environment*. Boston: Houghton Mifflin Company.
- HOPKINS, C.  
1939 A Bird's-Eye View of Opis and Seleucia. *Antiquity* 13:440-448.
- HOSKINS, W.G.  
1955 *The Making of the English Landscape*. London: Hodder and Stroughton.  
1957 *Leicestershire: An Illustrated Essay on the History of the Landscape*. London: Hodder and Stroughton.
- HOWELL, M.  
1966 A Soil Conductivity Meter. *Archaeometry* 9:20-23.  
1968 The Soil Conductivity Anomaly Detector (SCM) in Archaeological Prospection. *Prospezioni Archeologiche* 3:101-104.
- HRANICKY, W.J.  
1972 Application of Resistivity Surveying to American Archaeology. *The Chesapeake* 10(2):43-50.
- HUMAN SYSTEMS RESEARCH, INC.  
1973 *Technical Manual: 1973 Survey of the Tularosa Basin, the Research Design*. Albuquerque: Human Systems Research, Inc. On file at Division of Cultural Resources, Southwest Cultural Resources Center, National Park Service, Albuquerque, New Mexico.
- HUME, I.N.  
1975 Keeping the Record and Presenting the Story. In *Historical Archaeology*, I.N. Hume, pp. 194-256. New York: W.W. Norton and Company.
- HURAU, J.  
1963 *Applications de la Photographs Aérienne aux Recherches des Sciences Humaines dans les Regions Tropicales*. Paris: Faculté des Lettres de Bordeaux.
- HUS, J.J.  
1975 Magnetic and Electrical Survey—Powerful Aids for the Location and Confirmation of Archaeological Features Seen on Air Photographs. In *Aerial Reconnaissance for Archaeology*, D.R. Wilson, ed., pp. 98-102. *Council for British Archaeology Research Report*, No. 12.
- HYNIE, K.  
1962 Die Möglichkeiten der Ausnutzung der Fotogrammetrie in der Archäologie. *Bratislava Univerzita Filozoficka Fakulta, Spornik Musaica, Ročník* 13(2):46-55.
- IGONIN, N.I.  
1965 Primenie Aerofotosiemki pri Izuchenii Arkheologicheskikh Pamiatnikov. *Akademia Nauk SSSR, Institut Arkheologii: 257-262*. Moscow: Izhatel'stvo "Nauka".  
1967 Ispol'zovanie Materialov Aerofotosiemki v Etnograficheskikh Issledovaniakh. *Sovietskaiā Etnografaiā* 5:143-153.  
1968 Issledovanie Arkheologicheskikh Pamiatnikov Po Materialam Krupnomasshtabnoi Aerofotosiemki. *Istoraiā, Arkheologiā i Etnografaiā Srednei Azii: 257-268*. Akademia Nauk SSSR, Institut Etnografii im N.N. Miklukho-Maklaia. Moscow: Izhatel'stvo "Nauka".  
1971 *Krupnomasshtabnoe Kartografirovaniē Arkheologicheskikh Pamiatnikov Aridnoi Zony na Osnove Materialov Aerofotosiemki*. Moscow: Moskovskii Institut Inzhenerov Geodezii, Aerofotosiemki i Kartografii.
- IMBODEN, O., JR., AND J.N. RINKER  
1975 Photography in the Field. In *Photography in Archaeological Research*, E. Harp, Jr., ed., pp. 51-96. Albuquerque: University of New Mexico Press.
- ITEK CORPORATION  
1965 Archaeological Photointerpretation. *Technical Report* No. 65-8458. Lexington, Massachusetts: Itek Corporation.
- JOHN, D.H.O.  
1965 *Photography on Expeditions*. New York: Focal Press.
- JOHNSON, G.R., AND R.R. PLATT  
1930 Peru from the Air. *American Geographical Society Special Publication*, No. 12.
- JOHNSON, J.  
1950 The Dura Air Photographs. *Archaeology* 3(3):158-159.
- JOHNSON, P.L.  
1971 Remote Sensing as a Tool for Study and Management of Ecosystems. In *Fundamentals of Ecology*, E.P. Odum, "ed.", pp. 468-483. Philadelphia: W.B. Saunders.
- JOHNSON, P.L. (ed.)  
1969 *Remote Sensing in Ecology*. Athens: University of Georgia Press.
- JOHNSTON, R.B.  
1961 Archaeological Application of the Proton Magnetometer in Indiana (U.S.A.). *Archaeometry* 4:71-72.

- 1964 Proton Magnetometry and Its Application to Archaeology: An Evaluation at Angel Site. *Indiana Historical Society Prehistoric Research Series* 4(2).
- 1965 Trials of the ELSEC Proton Magnetometer at Two Sites on Wetherill Mesa. In *Contributions of the Wetherill Mesa Archaeological Project*, D. Osborne, ed., pp. 180–181. *Society for American Archaeology Memoir*, No. 19.
- JONES, R.J.A., AND R. EVANS.  
1975 Soil and Crop Marks in the Recognition of Archaeological Sites by Air Photography. In *Aerial Reconnaissance for Archaeology*, D.R. Wilson, ed., pp. 1–11. *Council for British Archaeology Research Report*, No. 12.
- JORDE, L.B.  
1975 *Current and Future Applications of Aerospace Remote Sensing in Archaeology: A Feasibility Study*. Report submitted to the National Park Service under Contract No. CX 700030206. On file at the Division of Remote Sensing, Southwest Cultural Resource Center, Albuquerque, New Mexico.
- JORDE, L.B., AND J.B. BERTRAM  
1974 *The Estimation and Comparison of Ground and Aerial Mapping Costs in Archaeology*. Report submitted to the National Park Service under Contract No. CX 700030206. On file at the Chaco Center, University of New Mexico, Albuquerque, New Mexico.
- 1976 Current and Future Applications of Aerospace Remote Sensing in Archeology: A Feasibility Study. In *Remote Sensing Experiments in Cultural Resource Studies: Non-destructive Methods of Archeological Exploration. Survey, and Analysis*, T.R. Lyons, assembler, pp. 11–67, *Reports of the Chaco Center*, No. 1. Albuquerque: Chaco Center, National Park Service and University of New Mexico.
- JUDD, N.M.  
1930 Arizona Sacrifices Her Prehistoric Canals. *Explorations and Fieldwork of the Smithsonian Institution in 1929*:177–182.
- 1931 Arizona's Prehistoric Canals from the Air. *Explorations and Fieldwork of the Smithsonian Institution in 1930*:157–166.
- KAMINSKAS, R., AND R. ŽVIRBLIS  
1975 On the Use of Photogrammetry for Making Necessary Records for Conservation and Restoration of Cultural Property in the U.S.S.R. *Photogrammetria* 30(3–6):237–240.
- KEDAR, E.Y.  
1957 Ancient Agricultural at Shivtah in the Negev. *Israel Exploration Journal* 7(3):178–189.
- 1957 Agricultural Achievements in the Central Negev. *Geographical Journal* 123:179–187.
- 1958 The Use of Aerial Photographs in Research in Physiographic Conditions and Anthropogeographic Data in Various Historic Periods. *Photogrammetric Engineering* 24:584–587.
- KIDDER, A.V.  
1929 Air Exploration of the Maya Country. *Bulletin of the Pan American Union* 63:1200–1205.
- 1930 Colonel and Mrs. Lindbergh Aid Archaeologists. *Mastkey* 3(6):5–17.
- 1930 Five Days over the Maya Country. *Scientific Monthly* 30:193–205.
- KIRKPATRICK, P., AND Y. KIRKPATRICK  
1955 American Antiquity, Aerial Photographs, and Indian Pictographs. *Flying* 56(3):42–43.
- KNOWLES, M.D.  
1966 Air Photography and History. In *The Uses of Air Photography: Nature and Man in a New Perspective*, J.K.S. St. Joseph, ed., pp. 127–137. New York: John Day.
- KNOWLES, M.D., AND J.K.S. ST. JOSEPH  
1952 *Monastic Sites from the Air*. Cambridge: Cambridge University Press.
- KOHN, C.F.  
1951 The Use of Aerial Photographs in the Geographic Analysis of Rural Settlements. *Photogrammetric Engineering* 17:759–771.
- KOLARS, J., AND G. APSBURY  
1967 Settlement Patterns in the Nile Delta and the Salton Sea Area. In *Earth Resource Surveys from Spacecraft*: Washington, D.C.: National Aeronautics and Space Administration.
- KOSOK, P.  
1965 *Life, Land and Water in Ancient Peru*. New York: Long Island University Press.
- KOSOK, P., AND M. REICHE  
1947 The Mysterious Markings of Nazca. *Natural History* 56(5):200–207, 237–238.
- 1949 Ancient Drawings on the Desert of Peru. *Archaeology* 2(4):206–215.
- KRIEGLER, K.  
1928 Über Photographische Augnahmen Prähistorischer Gräber. *Mitteilungen der Anthropologischen Gesellschaft in Wien* 58:113–116.
- KRUCKMAN, L.  
1972 The Techniques and Application of Aerial Photography to Anthropology: A Bibliography. *Exchange Bibliography* 339. Monticello, Illinois: Council of Planning Librarians.
- 1976 Remote Sensing and Archaeology: A Preliminary Bibliography. *RSEMS (Remote Sensing of the Electromagnetic Spectrum)* 3(2):33–45.
- KRUSE, H.  
1942 A Remarkable Aerial Photograph of a Mandan Village Site. *The Minnesota Archaeologist* 8(3):80–81.
- LAMING, A. (ed.)  
1952 *La Découverte au Passé: Progrès Récents et Techniques Nouvelles en Préhistoire et en Archéologie*. Paris: Piccard.
- LANGAN, L.  
1966 Use of New Atomic Magnetometers in Archaeology. *Prospezioni Archeologiche* 1:61–66.
- LARMORE, L.  
1965 *Introduction to Photographic Principles*, 2nd ed. New York: Dover Publications.
- LARRABEE, E. McM.  
1963 The Identification of a Village Site by Aerial Photography. *West Virginia Archaeologist* 16:7–8.



- LI BORGNE, E.  
1965 Les Propriétés Magnétiques du Sol: Application a la Prospection des Sites Archéologiques: *Archaeo-Physika der Beihefte der Bonner Jahrbücher*, Band 15:1–20.
- LEES, G.M., AND N.L. FALCON  
1952 The Geographical History of the Mesopotamian Plains. *Geographical Journal* 118:24–39.
- LENYEL, A., AND R. POULTON  
1976 Geophysical Survey in Carthage, 1976: Preliminary Report. *Journal of Field Archaeology* 3(4):468–469.
- LERICI, C.M.  
1961 Archaeological Survey with the Proton Magnetometer in Italy. *Archaeometry* 4:76–82.
- LERICI, C.M., E. CARABELLI, AND E. SEGRE  
1958 Prospezioni Geofisiche Nella Zona Archeologica di Vulci. *Quaderni di Geofisica Applicata* 19.
- LÉVA, C.  
1973 Archéologie Aérienne en Belgique. *Document Archéologia* 1: 40–45.  
1975 Aerial Reconnaissance and Low-Level Photography for Archaeology. In *Aerial Reconnaissance for Archaeology*, D.R. Wilson, ed., pp. 81–98. *Council for British Archaeology Research Report, No. 12*.
- LIGHT, R., AND M. UPJOHN  
1938 Contrasts in African Farming: Aerial Views from the Cape to Cairo. *Geographical Review* 28(4):529–555.
- LINDBERGH, C.A.  
1929 The Discovery of Ruined Maya Cities. *Science* 70:12–13.
- LININGTON, R.E.  
1963 The Application of Geophysics to Archaeology. *American Scientist* 51:48–70.  
1964 The Use of Simplified Anomalies in Magnetic Surveying. *Archaeometry* 7:3–13.  
1966 An Extension to the Use of Simplified Anomalies in Magnetic Surveying. *Archaeometry* 9:51–60.  
1966 Test Use of a Gravimeter on Etruscan Chamber Tombs at Cerveteri. *Prospezioni Archeologiche* 1:37–41.  
1967 A Short Geophysical Survey Carried Out at Bolonia, Cadiz. *Prospezioni Archeologiche* 2:49–71.  
1967 Magnetic Survey at La Civita, Tarquinia. *Prospezioni Archeologiche* 2:87–89.  
1970 A First Use of Linear Filtering Techniques on Archaeological Prospecting Results. *Prospezioni Archeologiche* 5:43–54.  
1970 Techniques Used in Archaeological Field Surveys. *Royal Society of London, Philosophical Transactions, Series A*, 269:89–108.
- LINTON, D.  
1961 Aerial Aid to Archaeology. *Natural History* 70(10):16–27.
- LONGWORTH, G., AND M.S. TITE  
1977 Mössbauer and Magnetic Susceptibility Studies of Iron Oxides in Soils from Archaeological Sites. *Archaeometry* 19(1):3–14.
- LOOSE, R.W.  
1976 Air-borne TV as an Archeological Remote Sensing Tool. In *Remote Sensing Experiments in Cultural Resource Studies: Nondestructive Methods of Archeological Exploration, Survey, and Analysis*, T.R. Lyons, assembler, pp. 77–79, *Reports of the Chaco Center*, No. 1. Albuquerque: Chaco Center, National Park Service and University of New Mexico.
- LOOSE, R.W., AND T.R. LYONS  
1976 Use of Aerial Photos in Archeological Survey along the Lower Chaco River. In *Remote Sensing Experiments in Cultural Resource Studies: Non-destructive Methods of Archeological Exploration, Survey, and Analysis*, T.R. Lyons, assembler, pp. 69–71, *Reports of the Chaco Center*, No. 1. Albuquerque: Chaco Center, National Park Service and University of New Mexico.  
1976 The Chetro Ketl Field: A Planned Water Control System in Chaco Canyon. In *Remote Sensing Experiments in Cultural Resource Studies: Non-destructive Methods of Archeological Exploration, Survey, and Analysis*, T.R. Lyons, assembler, pp. 133–156, *Reports of the Chaco Center*, No. 1. Albuquerque: Chaco Center, National Park Service and University of New Mexico.
- LYONS, T.R. (assembler)  
1976 *Remote Sensing Experiments in Cultural Resource Studies: Non-destructive Methods of Archeological Exploration, Survey, and Analysis. Reports of the Chaco Center*, No. 1. Albuquerque: Chaco Center, National Park Service and University of New Mexico.
- LYONS, T.R., AND T.E. AVERY  
1977 *Remote Sensing: A Handbook for Archeologists and Cultural Resource Managers*. Washington, D.C.: U.S. Government Printing Office.
- LYONS, T.R., AND D.L. DRAGER  
1977 *Remote Sensing Analysis of Prehistoric Human Occupations at Chaco Canyon, New Mexico*. Final Report on Investigations Supported by National Geographic Society Grant No. 1177. Report submitted to the National Geographic Society, Washington, D.C.
- LYONS, T.R., AND J.I. EBERT  
1976 Introduction. In *Remote Sensing Experiments in Cultural Resource Studies: Non-destructive Methods of Archeological Exploration, Survey, and Analysis*, T.R. Lyons, assembler, pp. 1–3. *Reports of the Chaco Center*, No. 1. Albuquerque: Chaco Center, National Park Service and University of New Mexico.
- LYONS, T.R., J.I. EBERT, AND R.K. HITCHCOCK  
1976 Archeological Analysis of Imagery of Chaco Canyon Region, New Mexico. In *ERTS-1, A new Window on Our Planet*, R.S. Williams, Jr., and W.D. Carter, eds., pp. 304–306. *Geological Survey Professional Paper* 929. Washington, D.C.: U.S. Government Printing Office.
- LYONS, T.R., AND R.K. HITCHCOCK  
1977 Introduction. In *Aerial Remote Sensing Techniques in Archeology*, T.R. Lyons and R.K. Hitchcock, eds., pp. 1–3. *Reports of the Chaco Center* No. 2. Albuquerque: Chaco Center, National Park Service and University of New Mexico.

- 1977 Remote Sensing Interpretation of an Anasazi Land Route System. In *Aerial Remote Sensing Techniques in Archeology*, T.R. Lyons and R.K. Hitchcock, eds., pp. 111–134. *Reports of the Chaco Center*, No. 2. Albuquerque: Chaco Center, National Park Service and University of New Mexico.
- LYONS, T.R., AND R.K. HITCHCOCK (eds.)  
1977 *Aerial Remote Sensing Techniques in Archeology. Reports of the Chaco Center*, No. 2. Albuquerque: Chaco Center, National Park Service and University of New Mexico.
- LYONS, T.R., R.K. HITCHCOCK, AND J.I. EBERT  
1974 *Remote Sensing Analysis of Prehistoric Human Occupations at Chaco Canyon, New Mexico*. Interim Report on Progress of Investigations Supported by National Geographic Society Grant No. 1177. Report submitted to the National Geographic Society, Washington, D.C.
- LYONS, T.R., M. INGLIS, AND R.K. HITCHCOCK  
1972 The Application of Space Imagery to Anthropology. *Proceedings: Third Annual Conference on Remote Sensing in Arid Lands*: 243–264. Tucson: University of Arizona.
- LYONS, T.R., B.G. POULS, AND R.K. HITCHCOCK  
1972 The Kin Bineola Irrigation Study: An Experiment in the Use of Aerial Remote Sensing Techniques in Archaeology. *Proceedings: Third Annual Conference on Remote Sensing in Arid Lands*: 266–283. Tucson: University of Arizona. [Also published in *Remote Sensing Experiments in Cultural Resource Studies: Non-destructive Methods of Archeological Exploration, Survey, and Analysis*, T.R. Lyons, assembler, pp. 115–131, *Reports of the Chaco Center*, No. 1. Albuquerque: Chaco Center, National Park Service and University of New Mexico, 1976.]
- MCDONALD, G.  
1934 Rome in the Middle East. *Antiquity* 8:373–380.
- MCLEAN, R.A.  
1923 The Aeroplane and Archaeology. *American Journal of Archaeology* 27:68–69.
- McFADDEN, C.H.  
1952 The Uses of Aerial Photography in Geographical Research. *Photogrammetric Engineering* 18:732–737.
- McFADGEN, B.G.  
1971 An Application of Stereo-photogrammetry to Archaeological Recording. *Archaeometry* 13(1):71–81.
- MCGEEHEE, M., B. LUYENDK, AND D. BOGOMAN  
1967 *Location of an Ancient Shipwreck by Modern Acoustic Techniques*. Scripps Marine Physical Laboratory.
- MCKINLEY, A.C., AND H.R. WELLS  
1921 Photos of Cahokia Mound. *Explorations and Fieldwork of the Smithsonian Institution in 1921*: 101–104.
- MADEIRA, P.C.  
1931 An Aerial Expedition to Central America. *Museum Journal, University of Pennsylvania* 22(2):95–153.
- MAILLAND, P.  
1927 The “Works of the Old Men” in Arabia. *Antiquity* 1:197–203.
- MALDE, H.E.  
1973 Geological Bench Marks by Terrestrial Photography. *Journal of Research of the U.S. Geological Survey* 1(2):193–206.
- MANSHARD, W.  
1965 Kigezi (Südwest-Uganda): Die Agrargeographische Struktur Eines Ostafrikanischen Bergeslandes. *Die Erdkunde* 19(3):192–210.
- MARGARY, I.D.  
1939 Roman Camp Site near Castor. *Antiquity* 13:455–458.  
1948 *Roman Ways in the Weald*. London: Phoenix House.
- MARMELSTEIN, A.D.  
1971 *A Feasibility Demonstration of Aerial Photographic Support for Marine Archeological Surveys*. Report on Project No. 14X3910. On file at the U.S. Department of the Interior, National Park Service, Washington, D.C.  
1977 Aerial Remote Sensing in Marine Archeology. In *Aerial Remote Sensing Techniques in Archeology*, T.R. Lyons and R.K. Hitchcock, eds., pp. 103–109, *Reports of the Chaco Center*, No. 2. Albuquerque: Chaco Center, National Park Service and University of New Mexico.
- MARSHALL, N.F., AND J.R. MORIARITY  
1964 Principles of Underwater Archaeology. *Pacific Discovery* 17(5):18–25.
- MARTIN, A.-M.  
1966 *Geschichte und Grundsätzliche Möglichkeiten der Luftbild-archäologie in der Modernen Forschung* [includes bibliography]. Magister Artium Thesis, Köln University, Bonn.  
1968 Luftbild Archäologie in der Modernen Forschung. *Bildmessung und Luftbildwesen* 3:178–183.  
1970 Bodenkunde und Klimatologie als Faktoren zur Erfassung Archäologischer Merkmale auf Luftbildern. *Bildmessung und Luftbildwesen* 5:307–310.  
1970 Die Bedeutung de Bodenkunde und Klimatologie zur Erfassung Archäologischer Merkmale auf Luftbildern. *Berichte des III Internationalen Symposiums für Photointerpretation*. Dresden.  
1970 Geschichte und Möglichkeiten der Luftbild-Archäologie. In *Landeskundliche Luftbilddauswertung im Mittel Europäischen Raum*, Vol. 10. Bonn-Bad Godesberg: Institut für Landeskunde.  
1971 Archaeological Sites: Soils and Climate. *Photogrammetric Engineering* 37(4):353–357.
- MARUYASU, T., AND T. OSHIMA  
1965 Photogrammetry in the Precision Measurement of the Great Buddha at Kamakura. *Studies in Conservation* 10(2):53–63.
- MASON, J.A.  
1931 The Air Survey in Central America. *University Museum Bulletin* 2(3):73–75, 78–79.
- MATHENY, R.T.  
1962 Value of Aerial Photography in Surveying Archaeological Sites in Coastal Jungle Regions. *American Antiquity* 28(2):226–230.

- 1971 Possible Approach to Population Distribution Studies in Southeastern Utah. In *The Distribution of Prehistoric Population Aggregates. Proceedings of the Southwestern Anthropological Research Group*, G.J. Gumerman, ed., pp. 152–164. Prescott College Anthropological Reports, No. 1. Prescott, Arizona: Prescott College Press.
- MATTHEWS, S.K.  
1968 *Photography in Archaeology and Art*. London: John Baker.
- MEAD, M.  
1963 Anthropology and the Camera. In *The Encyclopedia of Photography*, Vol. 1, W.D. Morgan, ed., pp. 166–184. New York: Greystone Press.
- MERRILL, R.H.  
1941 Photo-surveying Assists Archaeologists. *Civil Engineering* 11:233–235.  
1941 Photographic Surveying. *American Antiquity* 6(4):343–346.
- MERTENS, J.  
1962 Archéologie et Photographie Aérienne en Belgique. *Bulletin de la Société Française Photogrammétrie* 5:4–8.  
1964 Enkele Beschouwingen over Limburg in de Romeinse Tijd. *Archaeologia Belgica* 75:1–42.
- MEYER, W.  
1977 An Introduction to Remote Sensing Instrumentation. In *Aerial Remote Sensing Techniques in Archeology*, T.R. Lyons and R.K. Hitchcock, eds., pp. 5–13, *Reports on the Chaco Center*, No. 2. Albuquerque: Chaco Center, National Park Service and University of New Mexico.
- MILLER, W.C.  
1957 Uses of Aerial Photographs in Archaeological Field Work. *American Antiquity* 23(1):46–62.
- MILLON, R.  
1964 The Teotihuacan Mapping Project. *American Antiquity* 29(3):345–352.  
1970 Teotihuacan: Completion of Map of Giant Ancient City in the Valley of Mexico. *Science* 170: 1077–1082.
- MILLON, R. (ed.)  
1973 *Urbanization at Teotihuacan, Mexico, Volume 1: The Teotihuacan Map. Part 1: Text*. Austin: University of Texas Press.
- MILLON, R., R.B. DREWITT, AND G.L. COWGILL  
1973 *Urbanization at Teotihuacan, Mexico, Volume 1: The Teotihuacan Map. Part 2: Maps*. Austin: University of Texas Press.
- MONIER, R.B., AND N.E. GREEN  
1957 Aerial Photographic Interpretation and the Human Geography of the City. *Professional Geographer* 9(5):2–7.
- MONKHOUSE, F.J.  
1959 *Landscape from the Air*. Cambridge: Cambridge University Press.
- MONTGOMERY, J.W.  
1974 Religion, Archaeology, and Remote Sensing. *Proceedings of the 9th International Symposium on Remote Sensing of Environment*, Ann Arbor, Michigan.
- MORAIN, S., AND T.K. BUDGE  
1978 *Instrumentation for Remote Sensing in Archeology*. Washington, D.C.: Government Printing Office.
- MORRIS, D.P., AND L. MANIRE  
1976 Site Location Techniques in the Canyon del Muerto Survey. In *Remote Sensing Experiments in Cultural Resource Studies: Non-destructive Methods of Archeological Exploration, Survey, and Analysis*, T.R. Lyons, assembler, pp. 73–75. *Reports of the Chaco Center*, No. 1. Albuquerque: Chaco Center, National Park Service and University of New Mexico.
- MORRISON, H.F.  
1971 High-sensitivity Magnetometers in Archaeological Exploration. In *The Application of the Physical Sciences to Archaeology*, F.H. Stross, ed., pp. 6–20. *Contributions of the University of California Archeological Research Facility* 12.
- MORRISON, H.F., C.W. CLEWLOW, AND R.F. HEIZER  
1970 Magnetometer Evidence of a Structure within the La Venta Pyramid. *Science* 67:1488–1490.
- MORRISON, I.A.  
1973 Geomorphological Investigations of Marine and Lacustrine Environments of Archaeological Sites Using Diving Techniques. In *Science Diving International*, N.C. Fleming, ed., pp. 41–46. Andover, Massachusetts: Standard Press.
- MOUTERDE, R., AND A. POIDEBARDE  
1945 *Les Limes de Chalcis: Organization de la Steppe en Haute Syrie Romaine*. 2 vols. Paris: Librairie Orientaliste Paul Geuthner.
- MUDIE, J.D.  
1962 A Digital Differential Proton Magnetometer. *Archaeometry* 5:135–138.
- MUMBOWER, L.E., AND J. DONOGHUE  
1967 The Use of Aerial Photography to Obtain Socio-economic Information: A Study of Urban Poverty. *Photogrammetric Engineering* 33:610–618.
- MUNSON, P.J.  
1967 A Hopewellian Enclosure Earthwork in the Illinois River Valley. *American Antiquity* 32(3):391–393.
- MUSSON, C.R.  
1968 A Geophysical Survey at South Gadbury Castle, Somerset, Using the Howell Soil Conductivity Anomaly Detector (SCM). *Prospezioni Archeologiche* 3:115–121.
- NAGEL, G.  
1975 Aufgabenstellung und Technischer Aufwand bei Photogrammetrischen Vermessungen für Denkmalpflege und Baugeschichte. *Photogrammetria* 30(3–6):181–187.
- NEALEY, L.D.  
1977 Remote Sensing/Photogrammetry Education in the United States and Canada. *Photogrammetric Engineering and Remote Sensing* 43(3):259–284.
- NELSON, D.A.  
1973 The Hamilton Scourge Project 1973: A Log-Book. *Archaeological Newsletter of the Royal Ontario Museum*, No. 103.
- NEWCOMB, R.M.  
1966 Two Keys for the Historical Interpretation of Aerial Photographs. *California Geographer* 7:37–46.

- 1970 An Example of the Applicability of Remote Sensing: Historical Geography. *Geoforum* 2:89-92.
- 1971 Celtic Fields in Himmerland, Denmark, as Revealed by Vertical Photography. *Photogrammetria* 27: 101-113.
- NEWTON, M.B., JR., AND C.N. RAPHAEL  
1971 Relic Roads of East Feliciana Parish, Louisiana. *Geographical Review* 61(2):250-264.
- NICOLARDOT, J.P.  
1963 Documentation Archéologique en "Trois-Dimensions." *Revue Archéologique de l'Est et de Centre-Est*: 1962 3(4):309-314.
- NISHIO, M.  
1964 A Short Report on the Application of Photo-interpretation to Archaeology in Japan. *Journal of the Japan Society of Photogrammetry*, vol. 1.
- NORMAN, E.R., AND J.K.S. ST. JOSEPH  
1969 *The Early Development of Irish Society: The Evidence of Aerial Photography*. Cambridge: Cambridge University Press.
- NORTH, G.W., AND H.T. SVEHLAK  
1977 Remote Sensing in Archeological Exploration: Project Tattooed Serpent. In *Aerial Remote Sensing Techniques in Archeology*, T.R. Lyons and R.K. Hitchcock, eds., pp. 81-102. *Reports of the Chaco Center*, No. 2. Albuquerque: Chaco Center. National Park Service and University of New Mexico.
- NYLEN, E.  
1949 Lodfotografering. *Tor* 2:16-22.  
1964 A Turret for Vertical Photography. *Antikvariskt Arkiv* 24. Stockholm: Swedish Academy of History and Antiquities.
- OSTERHOUDT, F.  
1965 Land Titles in Northeast Brazil: The Use of Aerial Photography. *Land Economics* 41(4):387-392.
- ÖZDURAL, A.  
1975 Architectural Photogrammetry in Turkey. *Photogrammetria* 30 (3-6):249-255.
- PALMER, L.S.  
1960 Geoelectric Surveying of Archaeological Sites. *Proceedings of the Prehistoric Society* 26:64-75.
- PARSONS, J.J.  
1969 Ridged Fields in the Rio Guayas Valley, Ecuador. *American Antiquity* 34(1):76-80.
- PARSONS, J.J., AND W.A. BOWEN  
1966 Ancient Ridged Fields of the San Jorge River Floodplain, Columbia. *Geographical Review* 56(3):317-343.
- PARSONS, J.J., AND W.M. DENEVAN  
1967 Pre-Columbian Ridged Fields. *Scientific American* 217(1):92-100.
- PATERSON, G.L.  
1971 Photogrammetric Costing. *Photogrammetric Engineering* 37(12):1267-1270.
- PIAKE, H.  
1939 An Ancient Trackway on the English Downs. *Geographical Review* 29:431-446.
- PISCHEL, G.  
1967 Radiometrische Messungen zum Nachweis Verdeckter Archäologischer Objecte. *Ausgrabungen und Funde* 12:287-297.
- PETRE, A.  
1966 Noi Metode Technice de Prospectiuni Archeologice. *Studii se Cercetari de Istorie Veche* 17(1):197-209.
- PHILLIPS, P., J.A. FORD, AND J.B. GRIEEN  
1951 Archaeological Survey in the Lower Mississippi Alluvial Valley, 1940-47. *Papers of the Peabody Museum of American Archaeology and Ethnology* 25.
- PHILPOT, F.  
1972 An Improved Flux Gate Gradiometer for Archaeological Surveying. *Prospezioni Archeologiche* 7-8:99-106.
- PIGGOTT, C.M.  
1944 The Grim's Ditch Complex in Cranborne Chase. *Antiquity* 18:65-71.
- PIGGOTT, S., AND C.M. PIGGOTT  
1939 Stone and Earth Circles in Dorset. *Antiquity* 13:138-158.
- PLOG, F., AND J.N. HILL  
1971 Explaining Variability in the Distribution of Sites. In *The Distribution of Prehistoric Population Aggregates. Proceedings of the Southwestern Anthropological Research Group*, G.J. Gumerman, ed., pp. 7-36. *Prescott College Anthropological Reports*, No. 1. Prescott, Arizona; Prescott College Press.
- POIDEBARD, A.  
1929 Les Révelations Archéologiques de la Photographie Aérienne: Une Nouvelle Méthode de Recherches d'Observations en Région de Steppe. *L'Illustration*, May 25:660-662.  
1931 Sur les Traces de Rome: Exploration Archéologique Aérienne en Syrie. *L'Illustration*, December 19:560-563.  
1932 Photographie Aérienne et Archéologique Recherches de Steppe Syrienne, 1925-1931. *Bulletin de Photogrammétrie* 2:35-49.  
1933 La Photographie Aérienne dans la Lunière Éblouissante du Désert. *L'Illustration*, August 12:312-314.  
1934 La Trace de Rome dans le Désert de Syrie. . . Recherches Aérienne (1925-1932). *Antiquity* 8:373-380.  
1934 *La Trace de Rome dans le Désert de Syrie: Les Limes de Trajan à la Conquête Arabe, Recherches Aériennes (1925-1932)*, 2 vols. Paris: Librairie Orientaliste Paul Geuthner.  
1937 L'Ancien Port de Tyr. *L'Illustration*, June 3:326-328.  
1938 La Recherche des Civilisations Anciennes. *Comptes Rendus du Premier Congrès de Géographie Aérienne*: 258-262.  
1939 *Un Grand Port Disparu, Tyr: Recherches Aériennes et Sous-marines 1934-1936*. Paris: Paul Geuthner.
- POIDEBARD, A., AND J. LAUFERAY  
1951 *Sidon: Amenagements Antiques du Port de Saida. Etude Aérienne au Sol et Sous-marine*. Beirut; publication de Gouvernement Libanais.
- PORTER, J.E.  
1965 Archaeological Applications of Aerial Photography. *Arkansas Archaeologist* 6(1):9-11.

- POULS, B.G., T.R. LYONS, AND J.I. EBERT  
 1976 Photogrammetric Mapping and Digitalization of Prehistoric Architecture: Techniques and Applications in Chaco Canyon National Monument, New Mexico. In *Remote Sensing Experiments in Cultural Resource Studies: Non-destructive Methods of Archeological Exploration, Survey, and Analysis*. T.R. Lyons, assembler, pp. 103-114. Reports of the Chaco Center. No. 1. Albuquerque: Chaco Center, National Park Service and University of New Mexico.
- PRICE, R.  
 1974 Aerial Photography in the Study of Land Use: A Maya Community. In *Aerial Photography in Anthropological Field Research* E.Z. Vogt, ed., pp. 94-111. Cambridge: Harvard University Press.
- QUAM, L.O.  
 1952 The Application of Photointerpretation to Geographic Research. *Photogrammetric Engineering* 18:500-501.
- RAFTERY, J.  
 1944 Air Photography and Archaeology. *Journal of the Royal Society of Antiquaries of Ireland* 74:119.
- RAINEY, F.  
 1960 The Changing Face of Archaeology. *Expedition* 2(3):14-20.  
 1962 Electronics to the Rescue in Search for the Lost City of Sybaris: Discoveries by a Joint U.S.-Italian Expedition, Part I. *Illustrated London News* 241:928-930.  
 1962 Engineering Devices Used in the Excavation of the Lost City of Sybaris: Discoveries by a Joint U.S.-Italian Expedition, Part II. *Illustrated London News* 241:972-974.  
 1966 New Techniques in Archaeology. *American Philosophical Society Proceedings* 110:146-152.  
 1974 Science and Archaeology. *Archaeology* 27(1):10-21.
- RAINEY, F., AND E.K. RALPH  
 1966 Archaeology and Its New Technology. *Science* 153:1481-1491.
- RAINEY, F., E.K. RALPH, AND B. BEVAN  
 1971 Archaeological Prospecting: Search for Shaft-tombs, Jalisco, Mexico. *MASCA Newsletter* 7(1):1-2. Philadelphia: Museum Applied Science Center for Archaeology, University of Pennsylvania.
- RALPH, E.K.  
 1962 *Prospezioni Geofisiche: Relazione Sulla Campagna di Prospezioni, Aprile, Maggio, Giugno 1962, Nella Piana del Fiume Crati. Relazione, Sulla Esplorazione Geofisica (Sibari):*2-32. Milano: Fondazione C.M. Leric del Politecnico.  
 1964 Comparison of a Proton and a Ribidium Magnetometer for Archaeological Prospecting. *Archaeometry* 7:20-27.  
 1965 The Electronic Detective and the Case of the Missing City. *Expedition* 7(2):4-8.  
 1969 Archaeological Prospecting. *Expedition* 11(2):14-21.  
 1973 Magnetometer Survey at Malkata, Egypt. *MASCA Newsletter* 9(2):3-5. Philadelphia: Museum Applied Science Center for Archaeology, University of Pennsylvania.
- RALPH, E.K., AND A. MCPHERRON  
 1970 Magnetometer Location of Neolithic Houses in Yugoslavia. *Expedition* 12(2):10-17.
- RALPH, E.K., F. MORRISON, AND D.P. O'BRIEN  
 1968 Archaeological Surveying Utilizing a High-sensitivity Difference Magnetometer. *Geoexploration* 6:109-122.
- RALPH, E.K., AND F. RAINEY  
 1962 New Instrument Techniques in Archaeology. *Proceedings of the Symposium on Detection of Underground Objects, Materials, and Properties 1962*: 151-155. Fort Belvoir, Virginia: U.S. Army Engineer Research and Development Laboratories.
- RANDALL, H.J.  
 1934 History in the Open Air. *Antiquity* 8:5-23.
- REBIKOFF, D.  
 1961 Restitution Photographique Stéréoscopique des Epaves Immergées. *Congresso Internazionale II di Archeologia Sottomarina*.
- REES, A.I.  
 1962 Electrical Prospecting Methods in Archaeology. *Antiquity* 36: 131-134.
- REES, A.I., AND A.E. WRIGHT  
 1969 Resistivity Surveys at Barnsley Park. *Prospezioni Archeologiche* 4:121-124.
- REES, L.W.B.  
 1929 The Transjordan Desert. *Antiquity* 3:389-407.
- REEVES, D.M.  
 1936 Aerial Photography and Archaeology. *American Antiquity* 2(2):102-107.
- REEVES, R.G., A. ANSON, AND D. LANDEN (eds.)  
 1975 *Manual of Remote Sensing*, 2 vols. Falls Church, Virginia: American Society of Photogrammetry.
- REICHE, M.  
 1949 *Mystery on the Desert: A Study of the Ancient Figures and Strange Delineated Surfaces Seen from the Air near Nazca, Peru*. Lima: Editoria Medica Peruana, S.A.
- REIFENBERG, A.  
 1950 Archaeological Discoveries by Air-Photography in Israel. *Archaeology* 3(1):40-46.
- REINING, P.  
 1973 *Utilization of ERTS-1 Imagery in Cultivation and Settlement Site Identification and Carrying Capacity Estimates in Upper Volta and Niger*. Springfield, Virginia: National Technical Information Service.
- RESSELI, J.E.  
 1952 Use of Air Photographs by Geographers. *Photogrammetric Engineering* 18:737-741.
- REY, P.L.O.  
 1919 La Photographie Aérienne au Service de l'Archéologie. *La Nature* 2360(117).  
 1921 *Observations sur les Premiers Habitats de la Macédoine, Recueillies par le Service Archéologique de l'Armée d'Orient, 1916-1919 (Région de Salonique)*. Paris: E. de Boccard.
- REYNDERS, J.J.  
 1963 The Analysis of Shifting Cultivation Areas. *Transactions of the Symposium on Photo Interpretation, September 1962, Commission VII, ed.* Delft, the Netherlands: International Society of Photogrammetry.
- RHODES, P.P.  
 1959 The Celtic Field Systems of the Berkshire Downs. *Oxoniensia* 15:1-28.

- RICHMOND, I.A.  
1943 Recent Discoveries in Roman Britain from the Air and in the Field. *Journal of Roman Studies* 33:45-54.
- RICKETSON, O., JR., AND A.V. KIDDER  
1930 An Archaeological Reconnaissance by Air in Central America. *Geographical Review* 20(2):177-206.
- RILEY, D.N.  
1943 Archaeology from the Air in the Upper Thames Valley.  
1944 *Oxoniensia* 7-9:64-101.  
1944 The Technique of Air-archaeology. *Archaeological Journal* 101:1-16.  
1945 Aerial Reconnaissance of the Fen Basin. *Antiquity* 19:145-153.  
1946 Groups of Circles in the Silt Fens. *Antiquity* 20:150-153.
- RINKER, J.N.  
1975 Environmental Analysis by Air Photo Interpretation. In *Photography in Archaeological Research*, E. Harp, Jr., ed., pp. 117-153. Albuquerque: University of New Mexico Press.  
1975 Some Technical Aspects of Film Emulsions in Relation to the Analysis and Interpretation of Aerial Photographs. In *Aerial Reconnaissance for Archaeology*, D.R. Wilson, ed., pp. 32-46. *Council for British Archaeology Research Report* No. 12.
- RINKER, J.N., AND R.E. FROST  
1968 *Environmental Analysis and Remote Sensing*. Hanover, New Hampshire: U.S. Army Terrestrial Science Center.
- ROBBINS, C.R.  
1934 Northern Rhodesia: An Experiment in the Classification of Land with the Use of Aerial Photography. *Journal of Ecology* 22(1):88-105.
- ROBERTS, F.H.H., JR.  
1954 River Basin Surveys. In Appendix 5, Report of the Bureau of American Ethnology. *Smithsonian Institution, Annual Report for 1953*:60-62.
- ROSENCRANTZ, D.M.  
1975 Underwater Photography and Photogrammetry. In *Photography in Archaeological Research*, E. Harp, Jr., ed., pp. 265-309. Albuquerque: University of New Mexico Press.
- ROWE, J.H.  
1953 Technical Aids in Anthropology: A Historical Survey. In *Anthropology Today*, A.L. Kroeber, ed., pp. 895-940. Chicago: University of Chicago Press.
- RUDD, R.D.  
1974 *Remote Sensing: A Better View*. North Scituate, Massachusetts: Dusbury Press.
- RUSSELL, J.A., F.W. FOSTER, AND K.C. McMURRAY  
1943 Some Applications of Aerial Photographs to Geographic Inventory. *Michigan Academy of Science, Arts, and Letters, Papers* 29:315-341.
- RYAN, E.J., AND G.F. BASS  
1962 Underwater Surveying and Draughting: A Technique. *Antiquity* 36:252-261.
- ST. JOSEPH, J.K.S.  
1945 Air Photography and Archaeology. *Geographical Journal* 105: 47-61.  
1949 Antiquity from the Air. *Geographical Magazine* 21:401-407.  
1950 Air Reconnaissance and Archaeological Discovery. *Nature* 166:749-750.  
1951 Air Reconnaissance of North Britain. *Journal of Roman Studies* 41:52-65.  
1951 A Survey of Pioneering in Air Photography. In *Aspects of Archaeology in Great Britain and Beyond: Essays Presented to O.G.S. Crawford*, W.F. Grimes, Jr., ed., pp. 303-315. London: H.W. Edwards.  
1953 Air Reconnaissance of South Britain. *Journal of Roman Studies* 43:81-97.  
1955 Air Reconnaissance in Britain, 1951-55. *Journal of Roman Studies* 45:82-91.
- ST. JOSEPH, J.K.S. (ed.)  
1966 *The Uses of Air Photography: Nature and Man in a New Perspective*. New York: John Day.
- SANGER, D.  
1975 Laboratory Photography. In *Photography in Archaeological Research*, E. Harp, Jr., ed., pp. 313-343. Albuquerque: University of New Mexico Press.
- SAUCIER, R.T.  
1966 Soil-Survey Reports and Archaeological Investigations. *American Antiquity* 31(3):419-422.
- SAUTER, M.R.  
1947 L'Exploration Archéologique Aérienne en Suisse. *L'Anthropologie* 51(3-4):362-363.
- SAVILLE, M.H.  
1935 The Ancient Maya Causeways of Yucatan. *Antiquity* 9:67-73.
- SCALERA, M.M.  
1970 *Aerial Archaeology in the Space Age*. Report HHN-107, NASA Historical Division, Office of Policy. Washington, D.C. National Aeronautics and Space Administration.
- SCHABER, G.G., AND G.J. GUMERMAN  
1969 Infrared Scanning Images: an Archaeological Application. *Science* 164:712-713.
- SCHAEDEL, R.P.  
1951 The Lost Cities of Peru. *Scientific American* 185:18-23.
- SCHALK, R.F., AND T.R. LYONS  
1976 Ecological Applications of Landsat Imagery in Anthropology: An Example from the San Juan Basin, New Mexico. In *Remote Sensing Experiments in Cultural Resource Studies: Non-destructive Methods of Archeological Exploration, Survey, and Analysis*, T.R. Lyons, assembler, pp. 173-186. *Reports of the Chaco Center*, No. 1. Albuquerque: Chaco Center, National Park Service and University of New Mexico.  
1958 Air Reconnaissance in Britain, 1955-57. *Journal of Roman Studies* 48:86-101.  
1961 Air Reconnaissance in Britain, 1958-60. *Journal of Roman Studies* 51:119-135.  
1961 Aerial Reconnaissance in Wales. *Antiquity* 35:263-275.  
1962 Air Reconnaissance in Northern France. *Antiquity* 36:279-286.  
1962 Air Photography and Archaeology in Britain: Recent Results. *Proceedings of the International Symposium on Photointerpretation*:398-400. Delft, The Netherlands: International Society of Photogrammetry.  
1964 Air Reconnaissance: Recent Results. *Antiquity* 38 +

- 1966 The Scope of Air Photography. In *The Uses of Air Photography: Nature and Man in a New Perspective*, J.K.S. St. Joseph, ed., pp. 14–35. New York: John Day.
- 1966 Air Photography and Archaeology. In *The Uses of Air Photography: Nature and Man in a New Perspective*, J.K.S. St. Joseph, ed., pp. 113–125. New York: John Day.
- SCHELLART, A.I.
- 1962 Experiences with Aerial Photographs in the Study of Castles. *International Archives of Photogrammetry* 14:425–431.
- SCHMIDT, E.F.
- 1940 *Flights over Ancient Cities of Iran*. Chicago: University of Chicago Press.
- SCHMIEDT, G.
- 1962 *La Prospezione Area Nella Ricerca Archeologica*. Rome: Lerici Foundation.
- 1973 Panorama des Applications de la Photographie Aérienne en Italie dans le Domaine de la Topographie Historique. *Document Archéologia* 1:96–107.
- SCHODER, R.V.
- 1974 *Ancient Greece from the Air*. London: Thames and Hudson.
- SCHORR, T.S.
- 1965 *Cultural Ecological Aspects of Settlement Patterns and Land Use in the Cauca Valley, Columbia*. Unpublished Ph.D. dissertation, Harvard University, Cambridge, Massachusetts.
- 1968 Cauca Valley Settlements. *XXXVII Congreso Internacional de Americanistas, Argentina 1966, Actas y Memorias* 1:449–466. Buenos Aires, Argentina: Librart S.R.L.
- 1974 Aerial Photography in Regional Studies: A Reconnaissance of Adaptive Change in the Cauca Valley of Colombia. In *Aerial Photography in Anthropological Field Research*, E.Z. Vogt, ed., pp. 40–53. Cambridge: Harvard University Press.
- 1974 A Bibliography, with Historical Sketch. In *Aerial Photography in Anthropological Field Research*, E.Z. Vogt, ed., pp. 163–188. Cambridge: Harvard University Press.
- SCHUYLER, R.L.
- 1970 Archaeology in Outer Space. *Space World* 75:13.
- SCHWARZ, G.T.
- 1961 The “Zirkelonde”: A New Technique for Resistivity Surveying. *Archaeometry* 4:67–70.
- 1964 Stereoscopic Views Taken with an Ordinary Single Camera—A New Technique for Archaeologists. *Archaeometry* 7:36–42.
- SCOGINGS, D.A.
- 1973 An Experiment in the Photogrammetric Recording of Petroglyphs. *South African Journal of Photogrammetry* 5(1).
- SCOLLAR, I.
- 1962 Electromagnetic Prospecting Methods in Archaeology. *Archaeometry* 5:146–153.
- 1963 Einige Ergebnisse der Archäologischen Luftbildforschung im Rheinland während des Jahres 1962. *Bonner Jahrbücher* 163:305–310.
- 1963 Review of International Colloquium on Air Archaeology. *Antiquity* 37:296–297.
- 1965 *Archäologie aus der Luft: Arbeitsergebnisse der Flugjahre 1960 und 1961 im Rheinland*. Düsseldorf: Rheinland-Verlag.
- 1965 A Contribution to Magnetic Prospecting in Archaeology. *Archaeophysika Band 15 der Beihefte der Bonner Jahrbücher*, pp. 21–92.
- 1968 Program Package for the Interpretation of Magnetometer Data. *Prospezioni Archeologiche* 3:9–18.
- 1968 Automatic Recording of Magnetometer Data in the Field. *Prospezioni Archeologiche* 3:105–110.
- 1969 Some Techniques for the Evaluation of Archaeological Surveys. *World Archaeology* 1(1):77–89.
- 1970 Fourier Transforms Methods for the Evaluation of Magnetic Maps. *Prospezioni Archeologiche* 5:9–41.
- 1970 Magnetic Methods of Archaeological Prospecting: Advances in Instrumentation and Evaluation Techniques. *Royal Society of London, Philosophical Transactions, Series A*, 269:109–119.
- 1975 Transformation of Extreme Oblique Aerial Photographs to Maps or Plans by Conventional Means or by Computer. In *Aerial Reconnaissance for Archaeology*, D.R. Wilson, ed., pp. 52–59. *Council for British Archaeology Research Report*, No. 12.
- SCOLLAR, I., AND F. KURCKEBERG
- 1966 Computer Treatment of Magnetic Measurements from Archaeological Sites. *Archaeometry* 9:61–71.
- SCOTT, M.L.
- 1975 Sensitive Materials, Photographic Equipment, and Permanence of the Photographic Record. In *Photography in Archaeological Research*, E. Harp., Jr., ed., pp. 15–48. Albuquerque: University of New Mexico Press.
- SCOTT-ELLIOT, J.
- 1958 Archaeological Detection. *Journal of the British Society of Dowsers* 14:338–339.
- SEEGER, E.
- 1976 Orthography in Architectural Photogrammetry. *Photogrammetric Engineering and Remote Sensing* 42(5):625–635.
- SENA, C.
- 1975 Practical Problems in the Photogrammetry of Monuments. *Photogrammetria* 30(3–6):205–211.
- SERVICE D'ÉDITION ET DE VENTE DES PUBLICATIONS DE L'ÉDUCATION NATIONALE
- 1964 *Colloque International de' Archéologie Aérienne*. Paris: Bibliothèque Générale de l'École Pratique des Hautes Études, Section VI.
- SETZLER, F.M.
- 1952 Seeking the Secret of the Giants. *National Geographic Magazine* 102(3):390–404.
- SHERMAN, J.C.
- 1963 Accumulation of Geographic Data Through Remote Sensing Techniques. *Proceedings of the Second Symposium on Remote Sensing of Environment 1962*: 427–429. Ann Arbor, Michigan: University of Michigan.

- SHIPPEE, R.  
 1932 The "Great Wall of Peru" and Other Aerial Photographic Studies by the Shippee-Johnson Peruvian Expedition. *Geographical Review* 22(1):1-29.  
 1932 Lost Valleys of Peru: Results of the Shippee-Johnson Peruvian Expedition. *Geographical Review* 22(4):562-581.  
 1933 Air Adventure in Peru. *National Geographic Magazine* 63(1):80-120.  
 1934 Forgotten Valley of Peru. *National Geographic Magazine* 65(1):111-132.
- SHMIDEK, E.  
 1975 Application of Earth Photogrammetry for Photographing Monuments of Cultural and Architectural Interest in the People's Republic of Bulgaria. *Photogrammetria* 30(3-6):241-247.
- SIEMENS, A.H., AND D.E. PULESTON  
 1972 Ridged Fields and Associated Features in Southern Campeche: New Perspectives on the Lowland Maya. *American Antiquity* 37(2):228-239.
- SILBERMAN, L.  
 1959 Sociogrammetry. *Photogrammetric Engineering* 25:419-423.
- SIMMONS, H.C.  
 1969 *Archaeological Photography*. New York: New York University Press.
- SMITH, C.T. W.M. DENEVAN, AND P. HAMILTON  
 1968 Ancient Ridged Fields in the Region of Lake Titicaca. *Geographical Journal* 134:353-367.
- SMITH, J.T. (ed.)  
 1968 *Manual of Color Aerial Photography*. Falls Church, Virginia: American Society of Photogrammetry.
- SMITH, R.A.  
 1931 Temple Hunting. *The Sportsman Pilot* 5:13-16, 55.
- SOLECKI, R.S.  
 1952 Photographing the Past. *Missouri River Basin Progress Report, September, 1952*. Billings, Montana: United States Department of the Interior, Interior Missouri Basin Field Committee.  
 1957 Practical Aerial Photography for Archaeologists. *American Antiquity* 22(4):337-351.  
 1958 Considerations in the Interpretation of Aerial Views in Archaeology. *Photogrammetric Engineering* 24:798-802.
- SOLECKI, R.S. (author-editor), AND J.S.P. BRADFORD AND A.R. GONZALEZ (contributors)  
 1960 Photo Interpretation in Archaeology. In *Manual of Photographic Interpretation*, R.N. Colwell, ed., pp. 717-733. Washington, D.C.: American Society of Photogrammetry.
- SOUTH, S.A.  
 1963 *The Search for Brice's Fort*. Report on File at the North Carolina Department of Archives and History, Wilmington, North Carolina.  
 1968 Photography in Historical Archaeology. *Historical Archaeology* 1968:78-113.
- SOUTHWESTERN ANTHROPOLOGICAL RESEARCH GROUP (SARG)  
 1974 SARG: A Cooperative Approach towards Understanding the Locations of Human Settlements. *World Archaeology* 6(1):107-116.
- SOYER, J.  
 1963 Heirmont: A Village with a Circular Structure. *Photo Interpretation* 63:50-56.
- STALLARD, A.H., AND T.A. WITTY, JR.  
 1966 *The Use of Photo Interpretation in Archaeological Salvage Programs in Kansas*. State Highway Commission of Kansas, Special Report No. 2.
- STEER, K.  
 1947 Archaeology and the National Air-Photograph Survey. *Antiquity* 21:50-53.
- STEINMANN, M.  
 1970 A Lost City Re-discovered: Space Age Instruments Unlock the Secrets of Sybaris. *Science Annual*. New York: Time-Life Books.
- STEPONAITES, V.P., AND J.P. BRAIN  
 1976 A Portable Differential Proton Magnetometer. *Journal of Field Archaeology* 3(4):455-463.
- STERUD, E.L., AND P.P. PRATT  
 1975 Archaeological Intra-site Recording with Photography. *Journal of Field Archaeology* 2:151-167.
- STEWART, H.M.  
 1973 Photogrammetry in Archaeology. In *Archaeological Theory and Practice*, D.E. Strong, ed., pp. 275-282. London: Seminar Press.
- STOKES, G.A.  
 1950 The Aerial Photograph: A Key to the Cultural Landscape. *Journal of Geography* 49:32-40.  
 1954 Application of Aerial Photographs to Field Research in Cultural Geography. *Photogrammetric Engineering* 20:802-804.
- STONE, K.H.  
 1951 Geographical Air-Photointerpretation. *Photogrammetric Engineering* 17:754-759.  
 1956 Air Photo Interpretation Procedures. *Photogrammetric Engineering* 22(1):123-132.  
 1959 World Air Photo Coverage. *The Professional Geographer* 11(3):2-5.  
 1961 World Air Photo Coverage. *Photogrammetric Engineering* 27(2):214-227.
- STRAFFIN, D.  
 1971 A Device for Vertical Archaeological Photography. *Plains Anthropologist* 16:232-234.
- STRANDBERG, C.H.  
 1962 Ancient Indian Fishtraps in the Potomac River. *Photogrammetric Engineering* 28(3):476-478.  
 1967 *Aerial Discovery Manual*. New York: Wiley.  
 1967 Photoarchaeology. *Photogrammetric Engineering* 33(10):1152-1157.  
 1968 Archaeological Reconnaissance. In *Manual of Color Aerial Photography*, J.T. Smith, ed., pp. 386-387. Falls Church, Virginia: American Society of Photogrammetry.  
 1972 The Pig War. *Photogrammetric Engineering* 38(11):1071-1080.  
 1974 *Fort Frederick Photoarchaeological Study*. Baltimore: Maryland Department of Natural Resources.
- STRANDBERG, C.H., AND R. TOMLINSON  
 1965 *Photoarchaeological Analysis of Potomac River Fish Traps*. Alexandria, Virginia: Itek Data Analysis Center.



- 1969 Photoarchaeological Analysis of Potomac River Fish Traps. *American Antiquity* 34(3):312-319.
- 1970 Analysis of Ancient Fish Traps. *Photogrammetric Engineering* 36(8):865-873.
- STRINGER, W.J., AND J.P. COOK
- 1974 *Feasibility Study for Locating Archaeological Village Sites by Satellite Remote Sensing Techniques*. Report to the National Aeronautics and Space Administration for Contract No. NAS5-21833, Task 110-N. Washington, D.C.: National Aeronautics and Space Administration.
- STRUNK-LICHTENBERG, G.
- 1965 Bodenkundliche Untersuchungen an Archäologischen Objekten, Die Durch Luftbild-Aufnahmen; Entdeckte Wunden. *Archaeo-Physika*, Supplement of the Bonn Yearbook, Vol. 15:175-202. Cologne: Bohlau Verlag.
- STUBBS, S.A.
- 1950 *Bird's-Eye View of the Pueblos*. Norman: University of Oklahoma Press.
- SULLIVAN, A.
- 1974 Remote Imagery Studies in Hidden Valley, Nevada. *Journal of California Anthropology* 1(1):114-117.
- TABBAGH, A.
- 1972 Methode de Prospection Électromagnétique S.G.D. *Prospezioni Archeologiche* 7:125-134.
- TARTAGLIA, L.J.
- 1972 Infrared Photography: Detection of Cultural Anomalies. *MASCA Newsletter* 8(1):3. Philadelphia: Museum Applied Science Center for Archaeology, University of Pennsylvania.
- 1973 Infrared Photography: An Application of Remote Sensing to Archaeology. *Anthropology UCLA* 5(2):1-113.
- 1977 Infrared Archeological Reconnaissance. In *Aerial Remote Sensing Techniques in Archeology*, T.R. Lyons and R.K. Hitchcock, eds., pp. 35-50. *Reports of the Chaco Center*, No. 2. Albuquerque: Chaco Center, National Park Service and University of New Mexico.
- TATOR, B.A.
- 1951 Some Applications of Aerial Photographs to Geographic Studies in the Gulf Coast Region. *Photogrammetric Engineering* 17:716-725.
- TAYLOR, C.C.
- 1975 Aerial Photography and the Field Archaeologist. In *Aerial Reconnaissance for Archaeology*, D.R. Wilson, ed., pp. 136-141. *Council for British Archaeology Research Report*, No. 12.
- THOMSON, M.M., et al. (eds.)
- 1966 *Manual of Photogrammetry*, 2 Vols. Falls Church, Virginia: American Society of Photogrammetry.
- THOMPSON, W.I., III
- 1970 *Earth Survey Bibliography: A KWIC Index of Remote Sensing Information*. Report No. DOT-TSC-NASA-70-1. Cambridge, Massachusetts: DOT/Transportation System Center.
- THORPE, H.
- 1975 Air, Ground, Document. In *Aerial Reconnaissance for Archaeology*, D.R. Wilson, ed., pp. 141-153. *Council for British Archaeology Research Report* No. 12.
- TIDRICK, R.T., AND F.W. KENT
- 1953 Detection of Archaeological Sites from the Air. *Journal of the Iowa Archaeological Society* 3(2-3).
- TINNEY, L.R., J.R. JENSEN, AND J.E. ESTES
- 1977 Mapping Archaeological Sites from Historical Photography. *Photogrammetric Engineering and Remote Sensing* 43(1):35-44.
- TITE, M.S.
- 1966 Magnetic Prospecting Near to the Geomagnetic Equator. *Archaeometry* 9:24-31.
- 1967 The Magnetic Survey. Appendix to Rainsborough, Northants, England—Excavations 1961-65. M. Avery, J.E.G. Sutton, and J.W. Banks. *Proceedings of the Prehistoric Society* 33:296-300.
- 1972 The Influence of Geology on the Magnetic Susceptibility of Soils on Archaeological Sites. *Archaeometry* 14(2):229-236.
- 1972 *Methods of Physical Examination in Archaeology*. New York: Seminar Press.
- TITE, M.S., AND C. MULLINS
- 1969 Electromagnetic Prospecting: A Preliminary Investigation. *Prospezioni Archeologiche* 4:95-102.
- 1970 Electromagnetic Prospecting on Archaeological Sites Using a Soil Conductivity Meter. *Archaeometry* 12:97-103.
- 1971 Enhancement of the Magnetic Susceptibility of Soils on Archaeological Sites. *Archaeometry* 13:209-219.
- TOBLER, W.
- 1967 Evidence of the Central Place Theory in the Nile Delta. In *Earth Resources Surveys from Spacecraft*, Vol. 1. Washington, D.C.: National Aeronautics and Space Administration.
- TOLSTOV, S.P.
- 1948 *Drevnii Khorezm*. Moscow: Akademia Nauk SSSR.
- TOLSTOV, S.P., AND B.V. ANDRIANOV
- 1957 *Novye Materialy Po Istorii Irrigatsii Khorezm. Kratkie Soobshcheniya Instituta Ethnografii* 26. Moscow: Akademia Nauk SSSR.
- TOLSTOV, S.P., B.V. ANDRIANOV, AND N.I. IGININ
- 1962 Ispol'zovanie Aerometodov v Arkheologicheskikh Issledovaniakh. *Sovetskaiā Arkheologiā* 1:1-15.
- TOWNSEND, F.E.
- 1976 A Selected and Annotated Bibliography on the Remote Sensing of Historical and Archaeological Resources. In *Historic Preservation and the Cultural Landscape: An Emerging Land Use Planning Concern*, W.H. Tishler and R. Garber, eds., Madison, Wisconsin: Department of Landscape Architecture and the Environmental Awareness Center.
- TREWARTHA, G.T.
- 1948 Some Regional Characteristics of American Farmsteads. *Annals of the Association of American Geographers* 38:169-225.
- TSUBOI, K., et al.
- 1969 Application of Photogrammetry for Research on Cultural Properties. *Annual Bulletin of Nara National Research, Institute of Cultural Properties*: 1-8.
- TURNER, B.H.L.
- 1974 Prehistoric Intensive Agriculture in the Mayan Lowlands. *Science* 185:118-124.

- ULLIMAN, J.J.  
1975 Cost of Aerial Photography. *Photogrammetric Engineering* 41(4):491-497.
- UNITED NATIONS, ECONOMIC AND SOCIAL COUNCIL  
1940 *Manual on the Technique of Archaeological Excavations*. Paris: International Institute of Intellectual Cooperation, International Museums Office.
- U.S., DEPARTMENT OF INTERIOR, BUREAU OF LAND MANAGEMENT  
1969 Aerial Photography Use for BLM in Archeological Site Survey. *Bureau of Land Management Technical Note* 6230/9163.1. On file at Bureau of Land Management, Denver Service Center, Denver, Colorado.
- U.S., NATIONAL AERONAUTICS AND SPACE ADMINISTRATION  
1970 *Remote Sensing of Earth Resources: A Literature Survey with Indexes*. NASA SP-7036. Washington, D.C. Scientific and Technical Information Division, Office of Technology Utilization, National Aeronautics and Space Administration.
- VAN LIERE, W.  
1962 Aerial Photography in Archaeological Surveys in Syria. *International Archives of Photogrammetry* 14:408-410.
- VAUFREY, R.  
1946 La Photographie Aérienne et la Préhistoire. *L'Anthropologie* 50(1-2):291-293.
- VICKERS, R., AND L.T. DOLPHIN  
1975 A Communication on an Archaeological Radar Experiment at Chaco Canyon. *MASCA Newsletter* 11(1). Philadelphia: Museum Applied Science Center for Archaeology, University of Pennsylvania.
- VICKERS, R., L.T. DOLPHIN, AND D. JOHNSON  
1976 Archeological Investigations at Chaco Canyon Using a Subsurface Radar. In *Remote Sensing Experiments in Cultural Resource Studies: Non-destructive Methods of Archeological Exploration, Survey, and Analysis*, T.R. Lyons, assembler, pp. 81-101. *Reports of the Chaco Center*, No 1. Albuquerque: Chaco Center, National Park Service and University of New Mexico.
- VISSER, J.  
1961- Cost of Aerial Surveys. *Photogrammetria* 18 (1):  
1962 6-12.
- VOGT, E.Z.  
1974 Aerial Photography in Highland Chiapas Ethnography. In *Aerial Photography in Anthropological Field Research*, E.Z. Vogt, ed., pp. 57-77. Cambridge: Harvard University Press.
- VOGT, E.Z. (ed.)  
1974 *Aerial Photography in Anthropological Field Research*. Cambridge: Harvard University Press.
- VOGT, E.Z., AND A.K. ROMNEY  
1971 The Use of Aerial Photographic Techniques in Maya Ethnography. *VII Congrès International des Sciences Anthropologiques et Ethnologiques II*:156-171.
- VORBECK, E., AND L. BECKE  
1973 *Carnutum: Rom an der Donau*. Salzburg, Austria: Otto Muller Verlag.
- WALFORE, A.D.  
1962 *Regional Air Photo Interpretation in an Old Land: The Staffershire Potteries*. Vancouver: Department of Geography, University of British Columbia.
- WALKER, F.  
1953 *Geography from the Air*. New York: Dutton.
- WALKER, P.M., AND DENNIS T. TREXLER  
1977 Low Sun-Angle Photography. *Photogrammetric Engineering and Remote Sensing* 43(4):493-505.
- WALTON, M.G.  
1969 Surveying by Balloon and in Murky Water. In *Surveying in Archaeology Underwater*, P. Throckmorton et al., eds., pp. 66-78. London: Bernard Quaritch.
- WARD, T.E.  
1976 Photographic Aspects of Archaeology. In *Photographic Techniques in Scientific Research*, Vol. 2, A.A. Newman, ed., New York: Academic Press.
- WARE, J.A., AND G.L. GUMERMAN  
1977 Remote Sensing Methodology and the Chaco Canyon Road System. In *Aerial Remote Sensing Techniques in Archeology*, T.R. Lyons and R.K. Hitchcock, eds., pp. 135-167. *Reports of the Chaco Center*, No 2. Albuquerque: Chaco Center, National Park Service and University of New Mexico.
- WARNECK, P.H.  
1963 Photogrammetry and Property Survey. *Photogrammetric Engineering* 29(4):594-595.
- WASTL, J.  
1933 Stereoskopie und Stereophotogrammetrie. *Mitteilungen der Anthropologische Gessellschaft in Wien* 63:91-107.
- WEDEL, W.R.  
1953 Prehistory and the Missouri Development Program. Summary Report on the Missouri River Basin Archaeological Survey in 1948. *River Basin Survey Papers*, No 1, *Bureau of American Ethnology Bulletin* 151:1-59.
- WEYMOUTH, J.W.  
1976 *A Magnetic Survey of the Walth Bay Site (39WW203)*. Lincoln, Nebraska: Midwest Archeological Center.
- WHITTLESEY, J.H.  
1966 Bipod Camera Support. *Photogrammetric Engineering* 32(6):1005-1010.  
1966 Photogrammetry for the Excavator. *Archaeology* 19:273-276.  
1967 Balloon Over Sardis. *Archaeology* 20:67-68.  
1969 Balloon and Airfoil Photography. *MASCA Newsletter* 5(2). Philadelphia: Museum Applied Science Center for Archaeology, University of Pennsylvania.  
1969 Underwater Photogrammetry. *MASCA Newsletter* 5(2). Philadelphia: Museum Applied Science Center for Archaeology, University of Pennsylvania.  
1970 Tethered Balloon for Archeological Photos. *Photogrammetric Engineering* 36(2):181-186.  
1971 Aerial Photo Balloon. *Archaeology* 24(2):174.  
1971 Aerial Photography: Porto Cheli, Greece. *MASCA Newsletter* 7(2):2. Philadelphia: Museum Applied Science Center for Archaeology, University of Pennsylvania.  
1972 A Multi-band Camera for Archaeology. *Photogrammetric Engineering* 38:817-819.

- 1972 A New Camera for Archaeological Use. *Archaeology* 25:234.
- 1972 University Museum Aerial Photo Team. *Newsletter of the Association for Field Archaeology* 1(1).
- 1973 *Whittlesey Foundation Newsletter*. Wilton, Connecticut: Whittlesey Foundation, Inc.
- 1973 Balloons, "Flying Mattresses," and Photography. *Expedition* 15(2):30-39.
- 1973 A Multi-band Camera for Archaeology. *Annual of Fondazioni LERICI 1972-1973*: 153-155. Rome: LERICI Fondazioni.
- 1973 Whittlesey Foundation Activities. *Newsletter of the Association for Field Archaeology* 2(1).
- 1974 Aerial Archaeology: A Personal Account. *Journal of Field Archaeology* 1(1-2):206-208.
- 1974 Whittlesey Foundation Field Activities, 1974. *Journal of Field Archaeology* 1(3-4):315-322.
- 1975 Another Multi-band Camera for Archaeology. *Photogrammetric Engineering and Remote Sensing* 41(6):731-733.
- 1975 Elevated and Airborne Photogrammetry and Stereo Photography. In *Photography in Archaeological Research*, E. Harp, Jr., ed., pp. 223-263. Albuquerque: University of New Mexico Press.
- 1975 A Note on the Early History of Underwater Photography. In *Photography in Archaeological Research*, E. Harp, Jr., ed., pp. 365-367. Albuquerque: University of New Mexico Press.
- WHITTLESEY, J.H., AND J.W. MYERS  
1975 Whittlesey Foundation Field Season, 1975. *Journal of Field Archaeology* 2(4):351-361.
- WILCOCK, J.D.  
1969 Computer Analysis of Proton Magnetometer Readings from South Cadbury 1968: A Long Distance Exercise. *Prospezioni Archeologiche* 4:95-102.  
1970 Some Developments in the Portrayal of Magnetic Anomalies by Digital Incremental Plotter. *Prospezioni Archeologiche* 5:55-58.
- WILLEY, G.R.  
1953 Prehistoric Settlement Patterns in the Viru Valley, Peru. *Bureau of American Ethnology Bulletin* 155.  
1959 Aerial Photographic Maps as Survey Aids in Viru Valley. In *The Archaeologist at Work*, R.F. Heizer, ed., pp. 203-207. New York: Harper and Brothers.
- WILLIAMS-HUNT, P.D.R.  
1948 Archaeology and Topographical Interpretation of Air Photographs. *Antiquity* 22:103-105.  
1949 Anthropology from the Air. *Man* 49:49-51.  
1950 Irregular Earthworks in Eastern Siam: An Air Survey. *Antiquity* 24:30-36.
- WILSON, A.E.  
1970 A Winter Survey with Proton Magnetometers of an Underwater Site. *Prospezioni Archeologiche* 5:89-96.
- WILSON, D.R.  
1975 Photographic Techniques in the Air. In *Aerial Reconnaissance for Archaeology*, D.R. Wilson, ed., pp. 12-31. *Council for British Archaeology Research Report*, No 12.
- 1975 Some Pitfalls in the Interpretation of Air Photographs. In *Aerial Reconnaissance for Archaeology*, D.R. Wilson, ed., pp. 59-69. *Council for British Archaeology Research Report*, No 12.
- WILSON, D.R. (ed.)  
1975 *Aerial Reconnaissance for Archaeology*. *Council for British Archaeology Research Report*, No. 12.
- WILTSHIRE, R.J.  
1967 A Pole for High Viewpoint Photography. *Industrial and Commercial Photographer* 7(7):53-56.
- WOOD, R., AND F. STAPOR  
1974 Remote Sensing Investigation of Fort Poinsett. In *Underwater Archaeology in the National Park Service: A Model for the Management of Submerged Cultural Resources*, D.J. Lenihan, ed., pp. 53-60. Santa Fe, New Mexico: Southwest Regional Office, National Park Service.
- WRAY, J.R.  
1971 *Locating Archaeological Sites by Image Interpretation*. Washington, D.C.: USGS/NASA Geographic Applications Program.
- WREN, L.H.  
1974 Aerial Photography in the Investigation of Settlement and Trail Patterns in Highland Chiapas. In *Aerial Photography in Anthropological Field Research*, E.Z. Vogt, ed., pp. 125-139. Cambridge: Harvard University Press.
- YARNELL, R.A.  
1965 Implications of Distinctive Flora on Pueblo Ruins. *American Anthropologist* 67:662-674.
- ZAMMIT, F.  
1928 Prehistoric Cart-tracks in Malta. *Antiquity* 2:18-25.  
1951 Photographing the Romans: Archaeological Treasures under Fields of England. *Life* 30(26):101-105.



---

As the Nation's principal conservation agency, the Department of the Interior has responsibility for most of our nationally owned public lands and natural resources. This includes fostering the wisest use of our land and water resources, protecting our fish and wildlife, preserving the environmental and cultural values of our national parks and historical places, and providing for the enjoyment of life through outdoor recreation. The Department assesses our mineral resources and works to assure that their development is in the best interests of all our people. The Department also has a major responsibility for American Indian reservation communities and for people who live in Island Territories under United States administration.