

I 29.2: R31 /

Clemson University



3 1604 003 604 958

RESEARCH

ANDERSON COLLEGE LIBRARY
GOVERNMENT PUBLICATIONS

EDUCATION

IN THE

NATIONAL

PARKS!

NATIONAL
PARK SERVICE

THIS TRAIL LEADS
INTO NATURE,
FOLLOW IT AND
READ NATURE'S
STORY.



© Crandall

THE LOFTY TETONS

Viewed from the valley 7,000 feet below the crest of the range. Giant upheavals within the earth's crust brought this mighty range of mountains into existence. Since then glacial sculpture and stream erosion have been at work shaping the present landscape which makes Grand Teton National Park one of the scenic wonderlands of the world.


UNITED STATES
DEPARTMENT OF THE INTERIOR
RAY LYMAN WILBUR, Secretary
NATIONAL PARK SERVICE
HORACE M. ALBRIGHT, Director

RESEARCH AND EDUCATION IN THE NATIONAL PARKS

By
HAROLD C. BRYANT
and
WALLACE W. ATWOOD, Jr.



UNITED STATES
GOVERNMENT PRINTING OFFICE
WASHINGTON : 1932



Digitized by the Internet Archive
in 2012 with funding from
LYRASIS Members and Sloan Foundation

TABLE OF CONTENTS

PART I

THE EDUCATIONAL PROGRAM IN THE NATIONAL PARKS

	Page
Guided trips.....	8
Auto caravans.....	10
Nature trails.....	10
Historic trails.....	12
Exhibits in place.....	13
Wild-flower displays.....	14
Wild-life displays.....	15
Lectures—camp-fire talks.....	16
Museums and observation stations.....	18
Yosemite.....	18
Yellowstone.....	20
Grand Canyon.....	25
Crater Lake.....	29
Rocky Mountain.....	31
Hawaii.....	32
Lassen.....	32
Acadia.....	32
Mesa Verde.....	32
Mount Rainier.....	33
Sequoia.....	33
National monuments.....	34
Libraries.....	35
Nature notes and trail-side notes.....	36
Yosemite School of Field Natural History.....	37
Yosemite Junior Nature School.....	38
College and university field classes.....	39
Research.....	40

PART II

HISTORY OF EDUCATIONAL MOVEMENT

Developments' in the parks.....	47
Committee on Study of Educational Problems in National Parks.....	51
National Park Service Educational Advisory Board joins in program.....	51
Branch of Research and Education is established.....	54
How the Branch of Research and Education operates.....	54
Field headquarters.....	57

APPENDIX

	Page
Selected bibliography of articles relating to educational work in national parks.....	61
National park publications of scientific nature sold by the Superintendent of Documents.....	63
Increase in use of park educational facilities by the visiting public as compared with increase in total park attendance.....	64
Use of park educational facilities by the visiting public.....	65
Summary of current educational activities.....	66

LIST OF ILLUSTRATIONS

	Page
The lofty Tetons viewed from the valley 7,000 feet below the crest of the range.....	Frontispiece
Figure 1. In the midst of a Glacier Park flower garden.....	4
2. A nature-guide party in Bryce Canyon National Park.....	5
3. Close to the tree line in Rocky Mountain National Park.....	6
4. In the flower garden at the foot of Mount Rainier.....	7
5. At the brink of Grand Canyon with the park naturalist.....	8
6. The auto caravan visits Moro Rock, Sequoia National Park..	9
7. An auto caravan conducted by a ranger naturalist.....	11
8. Entrance to the Mammoth Nature Trail in Yellowstone National Park.....	12
9. Trail marker in Grand Canyon National Park.....	13
10. A seasonal flower display at Yosemite Museum.....	14
11. A portion of the Lamar Valley buffalo herd, Yellowstone National Park.....	15
12. A lunch counter for bears only, Sequoia National Park.....	16
13. An evening around the camp fire in Yellowstone National Park.....	17
14. The evening camp-fire talk in Yosemite conducted by the park naturalist.....	18
15. Yosemite Museum.....	19
16. The Yosemite Indians take part in the naturalist program...	20
17. Mariposa Grove Museum in Yosemite National Park.....	21
18. Fishing Bridge Museum.....	23
19. The outdoor lecture amphitheatre at Fishing Bridge Museum, Yellowstone National Park.....	24
20. The small trail-side shrine at Obsidian Cliff, Yellowstone National Park.....	25
21. On the parapet of Yavapai Station, Grand Canyon National Park.....	26
22. The "formations column" showing the succession of rocks in the Grand Canyon.....	27
23. Footprints of 4-footed animals preserved in the rocks of the canyon walls.....	28
24. Crater Lake and Sinnott Memorial as viewed from the rim...	30
25. A view of the Rocky Mountain Front Range from Estes Park.....	31
26. Archeological Museum at Mesa Verde National Park.....	33
27. One of the cliff dwellings at Montezuma Castle National Monument.....	34
28. An interior view of the Yosemite Museum Library.....	35
29. An interior view of the Fishing Bridge Museum.....	36
30. The Yosemite School of Field Natural History.....	37
31. A large labeled photograph which serves to orient the visitor..	39
32. The Yosemite Museum serves as a laboratory for university field classes.....	40

	Page
Figure 33. The small natural history museum in Zion Canyon National Park.....	41
34. Magnificent mountain scenery in the wilderness of Glacier National Park.....	46
35. A naturalist telling the story of Yosemite Valley.....	47
36. A group of tourists visiting Cliff Palace, Mesa Verde National Park.....	48
37. A corner in the museum reading room at Mesa Verde National Park.....	49
38. Lassen Peak from Manzanita Lake.....	50
39. Devil's Tower National Monument.....	52
40. A nature guide party in the Temple of Sinawava, Zion Na- tional Park.....	53
41. Announcement of free Government guide and lecture service..	55
42. The historic Moore House in the Colonial National Monu- ment area.....	56

PART I

THE EDUCATIONAL PROGRAM IN THE NATIONAL PARKS

103495°—32——2

1

PART I

THE EDUCATIONAL PROGRAM IN THE NATIONAL PARKS

Among the most valuable of this country's assets is the system of national parks now comprising 0.017 per cent of the total land owned by the Government. The establishment of these reserves constitutes one of the most important phases of the conservation movement that has characterized our national life during the past 60 years. The people of the United States have seen the wisdom of preserving in national ownership for posterity the conspicuous and unique natural wonderlands of our country.

Complying with the high standards required for the establishment of national parks a remarkable group of reserves has been created for the benefit and enjoyment of the people. These areas are of outstanding value to the Nation because of the permanent inspirational and educational values contained therein. Dr. John C. Merriam, president of the Carnegie Institution of Washington, has defined the use of national parks thus:

While the national parks serve in an important sense as recreation areas, their primary uses extend far into that fundamental education which concerns real appreciation of nature. Here beauty in its truest sense receives expression and exerts its influence along with recreation and formal education. To me the parks are not merely places to rest and exercise and learn. They are regions where one looks through the veil to meet the realities of nature and the unfathomable power behind it.

To provide each visitor to a national park with an opportunity to interpret and appreciate its superlative features has become the goal of all those interested in the highest use of national parks and has led to the establishment of an educational program to attain this end. In this program there is little that pertains to classrooms, textbooks, or other formal educational methods.

The extensive educational program now found in the national parks was brought about as the result of two factors—the need of the average visitor for explanations of major features and the desire of the Park Service to find the highest use of national parks. Both led to emphasis on proper interpretation of the features which characterize the parks.

Nearly every person who visits a national park does so either out of curiosity to see some natural wonder or from a desire to interpret

and appreciate superlative features. No matter what the motive there is always awakened a desire to have phenomena explained. Contact with real things, with unusual things, awakens a desire for explanation, for an increase of knowledge. This awakened craving for knowledge needs to be satisfied when the desire is uppermost.

On the other hand, the National Park Service discovered that in fulfilling its duty to the public the educational and inspirational opportunities must be developed to the fullest and that appreciation



By Hileman

FIGURE 1.—In the midst of a Glacier Park flower garden. The wealth of natural science features along the trail side is unlimited. A ranger naturalist frequently accompanies the horseback parties

of the major features must be actively carried to visitors by means of National Park Service men who have the training to interpret and the enthusiasm to impress the public.

As a result opportunity for improving one's knowledge regarding park features is a stabilized service afforded the public in all major parks. The Park Service feels that a contribution is being made to the enrichment of the lives of the park visitor because opportunities are provided whereby the visitor may learn about his natural environment and the laws of life. It is a program that helps to

make education a continuous process, that emphasizes avocational pursuits, that stimulates the proper use of leisure time.

The exceptional opportunities for outdoor education available in the national parks are being recognized more and more by scien-

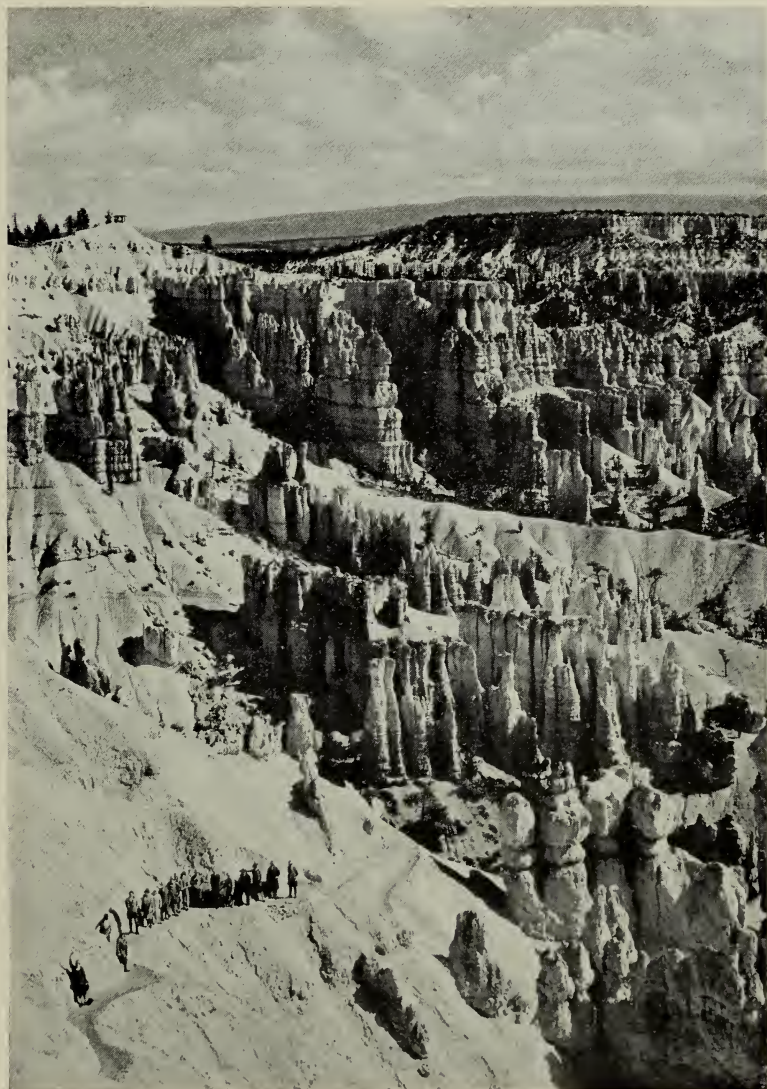


FIGURE 2.—A nature-guide party returning from a visit to Bryce Canyon. In the background are the well-known Queens Garden and Queens Castle. At the left is Sunset Point on which is located a small outlook station

tists and educators throughout the country. Each season numerous college and university classes, science clubs, and nature organizations visit the parks and study the superlative exhibits of geology, biology,

history, and archeology. These trips are encouraged by the Service and every effort is made to assure these groups a worth-while program.

In addition to this educational use there has grown up an actual educational program. Four years after the establishment of the



Courtesy The Colorado Association

FIGURE 3.—Close to the tree line in Rocky Mountain National Park. A horseback trip into this wilderness country is one of the finest ways to become acquainted with nature

National Park Service in 1916, field trips and lecture programs were offered free to all visitors to Yosemite National Park. This small beginning, first supported by individuals keenly interested in the educational possibilities of the parks, has grown until now there is a complete national field trip, lecture, museum, and research program in all major national parks of the country. The history of this educa-

tional movement from the conception of the idea to the establishment of the Branch of Research and Education is told in a later chapter. A discussion of accomplishments is to be considered first.

In the development of the enlarged program of educational activities several main general policies have been followed. Important among these are the following:

1. Simple, understandable interpretation of the major features of each park to the public by means of field trips, lectures, exhibits, and literature.
2. Emphasis upon leading the visitor to study the real thing rather than to utilize second-hand information. Typical academic methods are avoided.



FIGURE 4.—In the flower garden at the foot of Mount Rainier. The ranger naturalist is identifying the flora and explaining the life zones. Later he will take the party to localities where the work of the Mount Rainier glaciers may be seen

3. Utilization of a highly trained personnel with field experience, able to interpret to the public the laws of the universe as exemplified in the parks, and able to develop concepts of the laws of life useful to all.

4. A research program which will furnish a continuous supply of dependable facts suitable for use in connection with the educational program.

Never has there been an idea of making the educational work of purely academic character. Rather has emphasis been placed on a plan to make the work fit the outstanding opportunity—that of stressing first-hand information. Furthermore, the program had to be developed to fit the average park visitor. Lectures and exhibits play their part, but enthusiastic leadership by a nature guide who takes parties afield to study special features is the educational contribution that is unique. The universities may afford better class-

room work, better library facilities, and better lectures, but it is believed that nowhere can people find better objective materials for study or receive better training in interpreting phenomena than is afforded when the student is in direct contact with nature out of doors.

There is hope that new methods in adult education will be discovered, and that the national parks will become the great universities of the out-of-doors for which their superlative scientific exhibits so finely equip them.

GUIDED TRIPS

In commencing this discussion of the educational work in the parks and monuments, it is quite appropriate to refer first to the guided



FIGURE 5.—At the brink of Grand Canyon with the park naturalist. The different stages in the cutting of the great gorge are being explained and the interesting contrasts in vegetation pointed out

trip which has been the outstanding feature in its popularization. There is recognition that "Nature is the supreme school-teacher and master textbook." Walking trips, under the escort of ranger naturalists, are routed through areas rich in the natural phenomena especially exemplified in the park, and the features of outstanding interest along the way are pointed out and explained. (See figs. 4 and 5.) In parks and monuments where history is prominent in the educational program, the ranger historians stress first-hand acquaintance with scenes in which major human events have transpired and in this way motivate interest in our historical heritage.

Guided trips vary in length throughout the national-park system, from a few hours to those of several days' duration, extending into

the mountainous back country. This guide service is offered in all parks where educational work is being carried on. Despite the increase in the educational personnel, it is not possible to handle adequately the increasingly large crowds desiring to take the nature trips.

The method stressed is expressed in Agassiz's old dictum: "Study nature, not books." The enthusiasm of a nature guide is contagious. He is able to make a trail side interesting. He brings senses seldom used into prominence. Plants are recognized by odor and taste. Birds are recognized by call-note and song. Trees are recognized



FIGURE 6.—The auto caravan visits Moro Rock, Sequoia National Park. From this exceptionally fine outlook point the park naturalist calls attention to the principal mountain peaks. He also takes this opportunity to tell the visitors something of the major geologic processes which have combined to produce the rugged High Sierra scenery so magnificently exhibited in the eastern portion of the park

by feeling the bark. Geological stories are made plain through careful observation. Leading events in history are made vitally interesting through acquaintance with historic landmarks and remains of ancient civilizations. Too often a study of biology is sought through tedious dissection and microscopic analysis; too seldom is there study of the living thing in its natural environment.

From an educational standpoint, the method of the field trip has several outstanding advantages:

1. First-hand information involving all five senses is available, real experiences are gained, and better concepts obtained.

2. Common interest is gained because of the superlative teaching materials available. There is opportunity to follow the interest of the group. Individual attention is afforded the student.

3. Aesthetic and inspirational values are realized.

Nature guiding is an inspirational method of teaching. To inspire the student to continue to observe carefully is more important than to make new information stick in his mind. To pay a personal visit to an historic shrine is to give a concept such as no book can supply. As a rule, a ranger naturalist or historian has but a couple of hours in which to impress his followers with the possibilities of a trail side. He has done his work well if he has opened their eyes and unstopped their ears, demonstrated how much fun it is to study geologic and historic features and living things first hand, and left a vision of the great natural processes involved.

It is interesting to note that in 1930 nature-guide service was introduced in the Canadian national parks by the Dominion Government. According to the Canadian Department of the Interior, the nature guides' duties "will be simply to open the eyes of the visitors to the interesting things which most of us miss, and to explain their meaning," and "to act as curator of the natural treasures and curiosities of the parks, and to introduce all who are interested to the flowers, trees, birds, butterflies, and rocks which can be seen along the main trails within easy reach of the chief resorts."

AUTO CARAVANS

One of the most popular innovations in the naturalist program is known as the auto caravan. Visitors driving their own automobiles are conducted to points of special scenic, historic, or scientific interest. Daily caravan trips, under expert guidance of a trained naturalist or historian, are scheduled in all of the major national parks and the demand for this service is increasing rapidly.

NATURE TRAILS

The nature trail, carefully selected and labeled, is proving an efficient method of helping visitors to get acquainted with interesting geologic and biologic features. There are many who prefer studying things quietly by themselves, and labeled rocks, trees, and plants fulfill this requisite. In Yosemite National Park short trails have been built and labels placed to indicate the best localities in which glacial polish and striæ may be seen. In Mount Rainier National Park the former locations of the slowly retreating Nisqually Glacier have been marked. This has proved very interesting and instructive to the thousands of visitors.

While nature trails are very helpful and supplement the guided trips in an excellent manner, they will never gain the popularity which has come to the field trips conducted by ranger naturalists. The chief difficulty with the nature trail is that the animal life can not be labeled. For the naturalist there are few limitations as to what he may bring into his field trip talks, but the self-guiding trail will always be limited to stationary exhibits.

The attractiveness of the label has much to do with the success of a trail. It has been necessary to experiment for several years before deciding on the best type of material to use and the amount of information to place on a single label. An attempt has been made



FIGURE 7.—An auto caravan conducted by a ranger naturalist has stopped to observe interesting features of the plateau vegetation at Grand Canyon National Park. Thus motorists are given an opportunity to see and understand the natural features of the park

to make the labels inconspicuous. Some trouble with collectors of labels was experienced in Yosemite, necessitating abandonment of one trail. This problem is not serious, however, and nature trails are increasing in number throughout the park system. At Mount Rainier National Park there are more than 600 metal labels used on trails.

Self-guiding nature trails are now available to the public in all of the major parks, including Crater Lake, Glacier, Grand Canyon, Mount Rainier, Grand Teton, Rocky Mountain, Sequoia, Yellowstone, Yosemite, Zion, and Carlsbad Caverns. The actual number of visitors served by these trails is not known because of the difficulty in checking.

HISTORIC TRAILS

Comparable to the nature trail is the historic trail. The method used in marking the Yorktown battlefield in Colonial National



FIGURE 8.—Entrance to the Mammoth Nature Trail in Yellowstone National Park. Markers along the way contain short statements, frequently illustrated, regarding the trees, flowers, birds, and principal geologic phenomena

Monument is much the same as is employed on nature trails in western parks. Information is supplied by attractive markers which give the visitor the knowledge necessary to understand the historic events which are associated with the terrain. In many

national parks and monuments the nature and historic trails are often identical, for natural and historic phenomena frequently occur in the same setting.

EXHIBITS IN PLACE

In a number of the parks certain features along permanent trails and roads have been labeled and termed "exhibits in place." A good

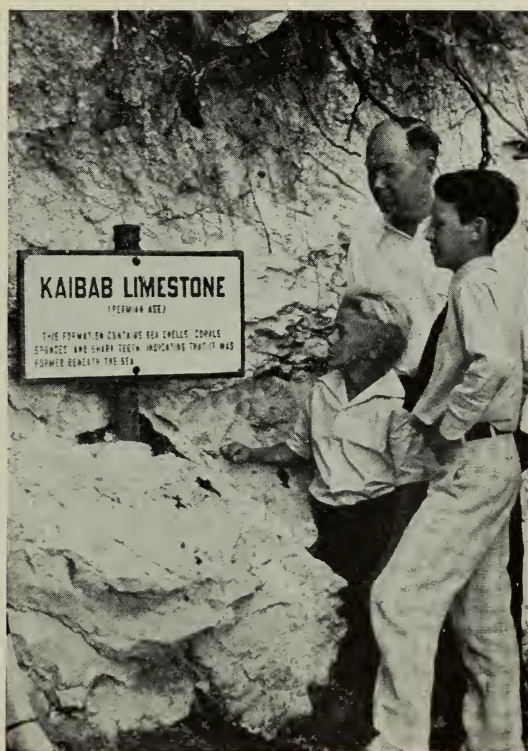


FIGURE 9.—Along the trail the hiker finds interesting, instructive markers. Here his attention is being called to the Kaibab limestone which contains seashells, corals, sponges, and shark teeth indicating that it was laid down beneath the sea

example of this is seen at Grand Canyon, where trails have been constructed to localities where particularly important geologic features are to be found. Figure 9 shows one of the numerous markers calling attention to fossil shells and sponges in the Kaibab limestone. Others are placed at localities where fossil footprints and fossil plants may be seen. In Yosemite the metamorphic rocks near El Portal are labeled as well as numerous other features in various parks.

WILD-FLOWER DISPLAYS

A seasonal wild-flower display is to be found in almost all national parks. By means of specially constructed exhibit cases in certain of the parks, the flowers are kept fresh for several days. (See fig. 10.) Exhibits are commonly located in the hotels and lodges as well as in the museums and information offices.

The planting and labeling of a wild-flower garden as a means of acquainting the visitor with the common plants has received consideration in recent years. In Sequoia such a garden was planted near the museum in Giant Forest. About 70 species of wild flowers

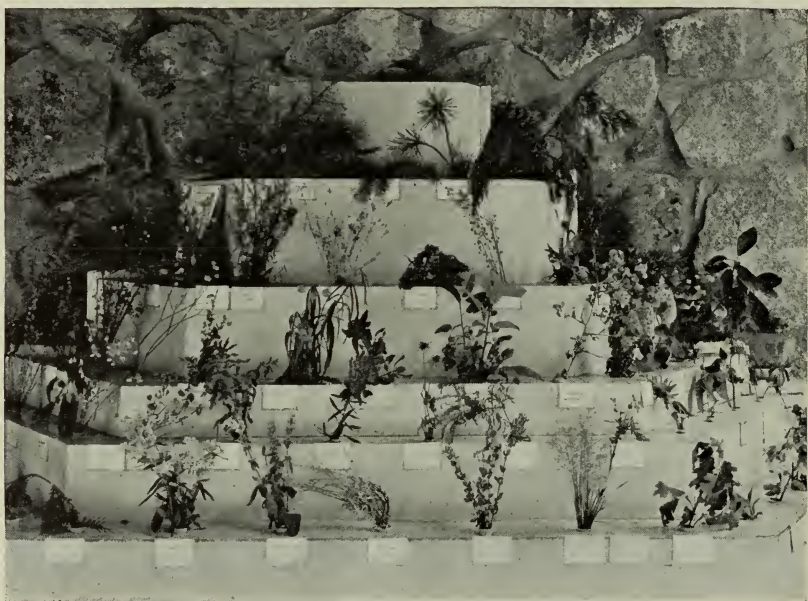


FIGURE 10.—A seasonal flower display at Yosemite Museum where visitors can see and identify the park wild flowers. A specially constructed exhibit case with running water keeps the flowers fresh for several days. A naturalist is constantly adding to the collection and replacing those specimens which have withered

were transplanted and labeled with metal signs. Many were brought down from timber line and others from lower elevations, thus affording a compact, comprehensive view of the more important plants.

At Grand Canyon near Yavapai Station a series of gardens has been arranged which display plants from the different life zones in the canyon. All specimens are properly labeled. Little trouble has been experienced in making the plants grow; consequently this type of exhibit is proving most attractive. In Glacier National Park a wild-flower garden has been established at Many Glacier. The most pretentious in the park system is the fine development just back of

the Yosemite Museum where living plants take the place of artificial exhibits.

WILD-LIFE DISPLAYS

In the course of a trip through a national park it is seldom that the visitor does not catch a glimpse of several different kinds of wild animals. If one is fortunate in Yellowstone, he may see deer, elk, antelope, and bear to his heart's content. These animals are not always seen by the people who hurry through the park in their automobiles, but the quiet watcher on the trails is sure to be rewarded. At certain times of the year the visitor may see mountain sheep, bison, and moose if he journeys into their distant retreats. In other



FIGURE 11.—A portion of the Lamar Valley buffalo herd, Yellowstone National Park. In the summer months when the herd is far away in the range country, a number of the buffalo are kept in a corral at Mammoth, where thousands of tourists go to see them. If it were not for this arrangement, the buffalo would seldom be seen by summer visitors

parks the wild life is likewise abundant and usually to be seen from roads and trails.

Because of frequent disappointment expressed by visitors who have failed to see the wild life which abounds in the parks, certain of the rare animals have been captured and temporarily kept on display. In Yosemite two mountain lions and a wild cat are kept in a small zoo. Yellowstone has a buffalo herd and usually a few coyotes on display in an inclosure. The general policy has been to reduce such displays of captive animals to a minimum.

Reptiles also make a valuable educational display. At Yosemite it has been shown that lizards and snakes may be easily kept during a summer season and then liberated in the fall. Similar displays of

reptiles are found at Grand Canyon and Zion National Parks. By means of such displays the old superstitions and fear of reptiles are dispelled in the minds of visitors who have a chance to study them at close hand.

LECTURES—CAMP-FIRE TALKS

Through the medium of lectures and camp-fire talks, much valuable information relative to the historic and scientific features of the parks is disseminated. The talks are given by members of the educational staff in the hotels and lodges, in community houses, at the

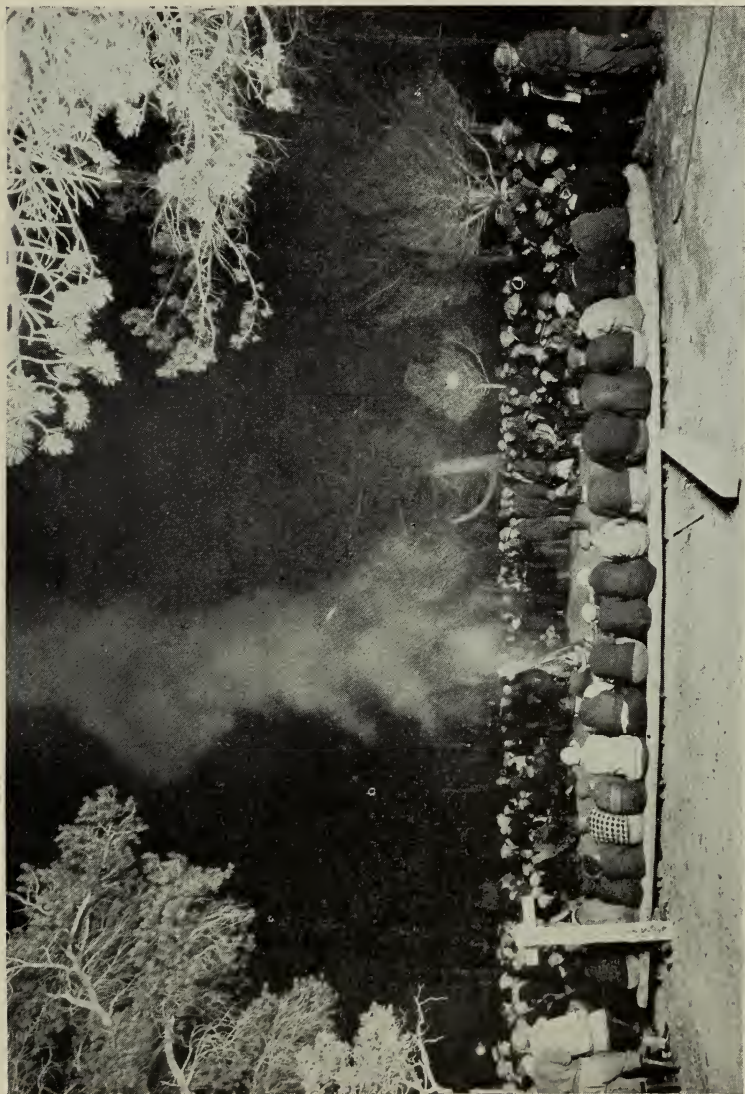


FIGURE 12.—A lunch counter for bears only, located in Sequoia National Park. Throughout the tourist season crowds of people assemble at this feeding ground to watch the "dinner party." In most parks, where bears are common, arrangements have been made by the Park Service so that the great carnivores may be observed without danger to visitors. Frequently talks about the bears are given ranger naturalists in attendance at the feeding grounds

camp fires in the public automobile camp grounds, in the museums or at such specialized places as the Old Faithful Geyser of Yellowstone and at the bear-feeding grounds in many of the parks. Such discussions touch on all phases of park educational work, including geology, vulcanology, zoology, botany, history, and numerous other more specialized fields. The lectures and camp-fire meetings conducted by the naturalists are all informal and usually end in valuable discussion resulting from questions raised by the tourists.

Among the naturalists serving in the parks there are many who can tell the interesting stories of geology and biology with great success. The evening talks are becoming more and more popular, as demon-

strated by the constantly increasing attendance. (See figs. 13 and 14.) Visitors are anxious to learn more about the parks which they have traveled so far to visit. The need is for highly trained men, who can in simple, enthusiastic manner portray to the public the



© J. E. Haynes

FIGURE 13.—An evening around the camp fire in Yellowstone National Park. A ranger naturalist is telling of his experiences with game animals. The listeners are keenly interested for they have seen many animals during the day and wish to know more about them

scientific features and leave an understanding of the great truths best exemplified in the park.

An interesting innovation in Yosemite and Mesa Verde programs has been the special Indian presentation. Local Indians give their native dances, play their games, and sing their tribal songs.

A series of lectures by outside talent also has been tried. Unfortunately, the LeConte Memorial Lectures under the auspices of the Extension Division of the University of California have been discontinued because of lack of funds. A series of lectures on the "Past, Present, and Future of the Giant Sequoia," by Dr. Ralph W. Chaney, was offered in July, 1929, at Sequoia National Park under the auspices of the Carnegie Institution of Washington.

MUSEUMS AND OBSERVATION STATIONS

Museum development has received considerable attention in the past few years with the result that many of the national parks and



FIGURE 14.—The evening camp-fire talk in Yosemite conducted by the part naturalist. The program, always informal, begins with a short talk on the natural phenomena of the park and ends with the naturalist answering questions. As many as 3,000 persons have been known to gather around one of these camp fires

monuments have natural history or historical museums, even though the exhibits are not as yet adequately housed in every case. Three of the national parks have more than one museum building each. Yellowstone has five, Yosemite three, and Grand Canyon two. The national monuments are not so well served, only a few of them having temporary housing facilities for exhibits.

YOSEMITE

In Yosemite the headquarter's museum functions with extraordinary success as a center for educational activities throughout the year. (See fig. 15.) New exhibits are being prepared from time to time by the museum preparators and other members of the perma-

nent naturalist staff. A display of living plants, arranged scientifically, supplements the herbarium specimens.

In the open area back of the museum a replica of one of the early Indian camps has been constructed. An old squaw occupies the camp daily; she demonstrates the weaving of baskets, preparation of

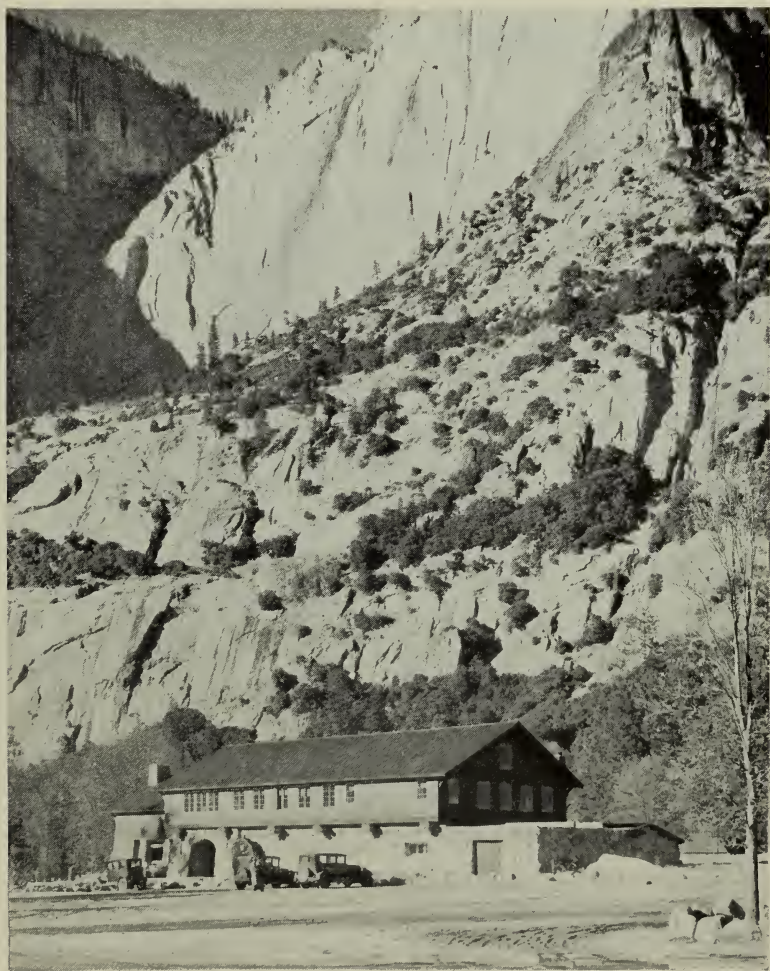


FIGURE 15.—Situated over 2,500 feet below the Yosemite Falls, close to the wall of the canyon, is the central museum, a gift of the Laura Spelman Rockefeller Memorial. In addition to numerous exhibits, the museum building houses the park library and educational headquarters

foodstuffs, and sings Indian songs. This “live exhibit” has proved to be of great interest to Yosemite visitors. (See fig. 16.)

There is much to see on the floor of the Yosemite Valley, but for those who climb out of the gorge there is a still greater thrill. From Glacier Point, 3,254 feet above the valley floor, one can view the sum-

mit of the High Sierra through a sweep of 180°. There is a little stone lookout perched on the very rim of the gorge and here telescopes are available for those who wish to study in detail the waterfalls and granite domes of the Yosemite region. A ranger naturalist is in constant attendance at the trail-side station to answer questions regarding the geology, the trees, wild life, and history of the park. On Sentinel Dome there is another station, established solely for the study of granite. Here the visitor may learn of the giant forces of nature which have produced the granites of Yosemite.

In the Mariposa Grove of Big Trees a very attractive little museum building has been constructed. (See fig. 17.) It is a replica



FIGURE 16.—The Yosemite Indians take part in the naturalist program. Park visitors are invited to watch the Indians at work and learn the secrets of basket weaving. Frequently dance programs are arranged and special ceremonies conducted

of an old log cabin which formerly stood in this grove of giant sequoias. Through the activities of the park naturalist, pertinent exhibits have been installed and the little cabin has been made the center of educational activities in the Mariposa Grove.

YELLOWSTONE

The greatest activity in museum construction in the national parks has been centered in Yellowstone, where under the general supervision of Dr. Hermon C. Bumpus, president of the Association of American Museums, four trail-side museums and a trail-side shrine have been completed.

The Old Faithful Museum was opened to the public in June, 1929. Near the entrance is located the information desk, presided over by a ranger naturalist ready to answer questions. Leading from the



FIGURE 17.—The Mariposa Grove museum in the depths of a giant sequoia forest, Yosemite National Park. This structure, a replica of a log cabin which stood in this grove for many years, serves as a center for educational activities in this portion of the park. The visitors are looking at a section of a giant sequoia tree which has been placed at the end of the museum building

foyer is the museum room proper, in which exhibits are devoted to geyser activities, the geology and physical geography of the geyser basin, and the local fauna and flora. The visitor is invited to sit down, use microscopes, handle and study specimens. An inclosed

area open to the sky forms a delightful auditorium, affording additional exhibit space and an excellent location for a wild-flower garden. Evening lectures are given here, and in the event of rain the audience finds shelter in the covered passageway which surrounds the open-air theater.

The trail-side museum at Madison Junction, which is located near the spot where the Washburn-Langford exploring party of 1870 proposed the establishment of the Yellowstone area as a national park, specializes in the human history of the park. There the information dealing with the history of Yellowstone is furnished by means of charts, maps, transparencies, photographs, and other source materials.

The Norris Museum is located close to the famous geyser basin of that name, easily one of the most interesting features of the park. Twelve miles to the northwest can be seen the Gallatin Mountains, and close at hand the colorful steaming geyser basin. The building is architecturally beautiful. The information desk occupies a central position, and near it are some large rock specimens. On one side an exhibit room contains a series of small realistic groups with transparent backgrounds showing the fauna and flora which the visitor has encountered on the trip from Mammoth to Norris, or anticipates what will be seen on the next section of the loop. The opposite wing contains material designed to explain thermic activity of the area. Charts picture the geologic history of the region. One may learn of rock composition and formation. In fact, a short course in petrology is available. A relief model on the wall at the end of the wing is always a center of attraction.

The fourth Yellowstone museum is at the Fishing Bridge auto camp grounds. Superbly located on a slight elevation overlooking Lake Yellowstone, this rustic little museum takes its place among the most attractive buildings in the park system. (See fig. 18.) The planning of this building, as well as the ones at Norris and Yavapai (Grand Canyon), is the work of Herbert Maier. The exhibits depict the bird life of this locality and the interesting geology of the Yellowstone Lake region. Installations are unique in character and add greatly to the series of educational exhibits in Yellowstone museums. In addition to mounted specimens of the diving birds, there are diagrams and explanations of the anatomy which makes these birds excellent divers. Flight mechanism is explained as a "related-story" exhibit of the pelican group. Relief maps and diagrams with simple text, prepared by Dr. Erwin J. Raisz, of Columbia University, make clear the geologic story of the region. A reference library will be an additional feature. The Fishing Bridge Museum is considered a model of what a trail-side museum should be, both in architecture and installation.

In the woods close by the museum is an attractive outdoor lecture amphitheater. It is equipped for illustrated talks as well as camp-fire demonstrations. (See fig. 19.) Every evening large crowds



FIGURE 18.—A front view of the Fishing Bridge Museum, Yellowstone National Park. Pleasing architectural lines and careful landscaping make this building one of the most attractive of the entire park system.

assemble around the fire to hear the ranger naturalist give his informal presentation.

The trail-side shrine erected at Obsidian Cliff describes and makes understandable this formation. Built of columnar basalt, this unique

structure presents a pleasing appearance, and by chart and specimen tells the story of volcanic glass. (See fig. 20.)

To complete the educational unit, there are contemplated a small museum at Canyon and a larger master museum at Mammoth. The

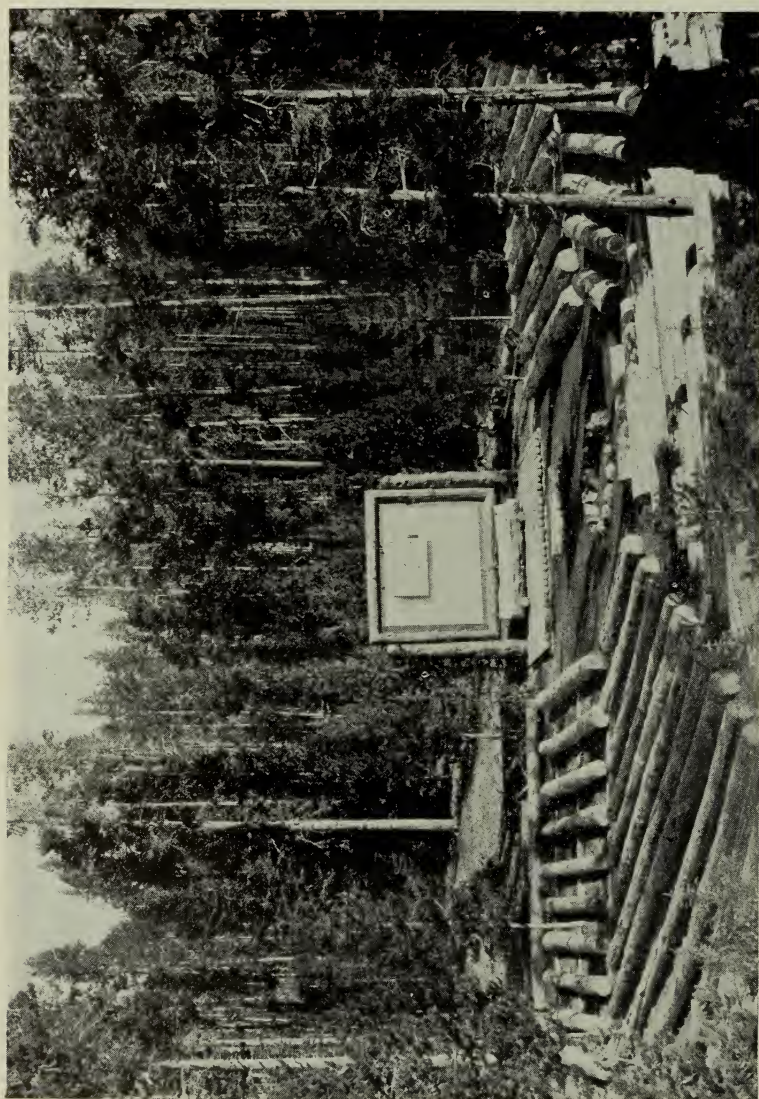


FIGURE 19.—The attractive outdoor amphitheater at Fishing Bridge Museum, Yellowstone National Park. Crowds attend the evening lectures given here regularly throughout the summer season. A special booth containing a lantern slide projector has been constructed, and illustrated talks are now regular features of these outdoor programs

plan envisages a suitable headquarters plant at Mammoth which will provide facilities for the educational staff and exhibits dealing not only with the immediate region but those acting as an index to all of the other museums comprising the unit. This master museum is to occupy a commanding position comparable to the importance of its

service to the public. Years of collecting have made available fine materials already on exhibition in the temporary museum. Dr. Carl P. Russell, field naturalist, has supervised the installation of exhibits and general museum activities.

Thus it can be seen that splendid progress has been made in Yellowstone toward the goal of a "complete educational unit, fully serving the needs of the public."

GRAND CANYON

Development at Grand Canyon has been planned and executed under the general direction of Dr. John C. Merriam, president of



FIGURE 20.—The small trail-side shrine at Obsidian Cliff, Yellowstone National Park. This little structure shelters several very interesting exhibits which explain the origin of obsidian and tell the story of how the rock contributed to the making of fighting implements for the Indians

the Carnegie Institution of Washington. At his request a number of scientists spent several weeks at the Grand Canyon studying the problem of interpreting this masterpiece to the public. As a result of this careful study it was decided to erect a scientific observation station on the rim of the canyon at Yavapai Point. Particular pains were taken that the building should harmonize with the natural surroundings.

In the plan of the station, for it can not be called a museum, the primary objectives are the things of interest as they appear in the canyon, not as artificial representations. The station is in effect a window through which one looks into the canyon from an unusually favorable place.

Operation of the station involves two groups of aids to the visitor; first, the parapet views arranged along the outer or parapet wall of the observation porch (see fig. 21), and second, the supporting exhibits of photographs and specimens in the exhibit room to the rear of the porch.

The parapet views are so arranged as to locate features of extraordinary interest, to give closer views in many instances by telescopes or field glasses, to give small close-up views with photographs accompanying the telescopes, to illustrate the localities with specimens and to point out trails by which they can be reached. One telescope



FIGURE 21.—Viewing the Grand Canyon at close range through the telescopes erected on the parapet at Yavapai. The station is designed to aid visitors to become acquainted with the principal features of the Grand Canyon not easily seen or understood without assistance

permits a view of the rushing, muddy Colorado River, another the top of Cedar Mountain, and still others, certain rock strata. In the boxes may be seen the tools used by the river in cutting its channel—mud, silt, sand, pebbles, and boulders. A sample of the water from the river shows the large amount of sediment carried. Other boxes show specimens indicating crustal movement, oldest rocks of the canyon, remains of ancient life, and present-day life.

A “formations column” constructed of actual rocks brought from the strata in the canyon forms a notable exhibit at the southwest corner of the porch. (See fig. 22.) Alongside is a “fossil column” which shows the evidence of life that has been found in the different

horizons. A remarkable block illustrating an unconformity of hundreds of millions of years is displayed at the rear of the observation porch. Here also are several large sandstone slabs exhibiting fossil footprints. Some of these are pictured in Figure 23.

Supporting exhibits in the interior room amplify by means of transparencies, specimens, motion pictures, and lantern slides the story of the canyon as told on the parapet. Exhibit cases are oriented to correspond to the parapet views and are similarly numbered. Automatic machines show films of the Colorado River in action.

The cutting of the Grand Canyon has made visible to the eye one of the greatest geologic time-tables in the world. Although it takes us but a moment to shift our glance from the depths of the



FIGURE 22.—On the parapet of the Yavapai Station, Grand Canyon National Park.

At the left is a geologic map of the region. At the extreme right is a "formations column" showing the succession of rocks in the Grand Canyon by use of actual specimens placed in the order in which they appear in the canyon walls

inner gorge to the canyon rim above, the time period recorded in that mile of sediments is many hundreds of millions of years. With this tremendous story of earth history before the visitor at Yavapai Station there is a chance to teach geology as in no other part of the world. In order to link this story with the physiographic history of the surrounding country, a large airplane diagram of the entire canyon region has been prepared and placed on the parapet of the Yavapai Station. This has proved of real assistance to the geologist as well as to the lay visitor.

As an aid to visitors using the Yavapai Station a carefully prepared guidebook interpreting the parapet views and exhibits has been issued. The story of the canyon as brought out in this little book-

let is divided into four stages: (1) Forces which produced the canyon and its walls; (2) history of earth building; (3) record of life through the ages; (4) forming of Grand Canyon as affecting life of to-day. The 15 views illustrating these stages are indicated in table form in the booklet as follows:



FIGURE 23.—Footprints of 4-footed animals preserved in the rocks of the canyon walls. These tracks were made by amphibians and reptiles that lived in the Grand Canyon region many thousands of years ago. Although several good specimens are on exhibit in the Yavapai Station, the visitor is urged to follow some one of the trails into the canyon where he may observe the footprints in place

VIEWS FROM PARAPET OF YAVAPAI STATION

	View number
FORCES INVOLVED IN MAKING CANYON AND WALLS	1. How the Colorado River cuts its canyon.
	2. How the Canyon walls were built.
	Movement of earth's crust makes possible canyon cutting and formation building.
	Evidence of movement in earth's crust.
HISTORY OF EARTH BUILDING	Colorado River makes new formations from products of canyon erosion accumulated at its mouth.
	3. Oldest rocks in the canyon, and among the oldest in the world—so old that their original character has been lost.
	4. Oldest rocks which retain their original character as gravels, sands, muds, etc.
	5. Greatest single geological story told by the canyon.
	6. Tremendous changes in surface of the earth shown by widely differing formations of the upper canyon walls.

- | | |
|--|--|
| RECORD OF
LIFE
THROUGH
THE AGES | 7. Most ancient relics of life preserved in walls of Grand Canyon, primitive plants.
8. Oldest remains of animals in Grand Canyon walls, crab-like creatures and shell fish—true fishes in still higher strata.
9. Earliest imprints of ferns and insects in canyon formations.
10. Oldest traces of four-footed animals preserved in canyon walls.
11. Continuation of Grand Canyon story of earth history and of life through isolated hill of strata near canyon rim at Cedar Mountain. |
| FORMING OF
GRAND
CANYON AS
AFFECTING
LIFE OF
TO-DAY | 12. Cutting of Grand Canyon as influencing variation of life by geographical separation of North and South Rim plateaus.
Distribution of animals and plants to-day according to zones of climate developed in cutting Grand Canyon.
13. Life of highest land in North Rim area, like that of southern Canada.
14. Life of the South Rim area.
15. Life of the canyon floor region, like that of desert areas in Sonora, Mexico. |

The Yavapai project is best considered as an educational experiment to determine the best methods to employ in interpreting national parks to visitors. In construction, installation, and method of presentation it is unique. It is designed to be self-operating. The visitor may, on his own initiative, obtain such general or orientation views as will present the major features in their natural relation to each other. Emphasis is upon leading the visitor to see and interpret the thing itself from the best viewpoint rather than lead him away from it to see fragments or artificial explanations.

Near Lipan Point, some 15 miles to the east of Yavapai Point, several Indian ruins have been excavated under the supervision of Dr. Harold S. Gladwin, of the Gila Pueblo. Mrs. Winifred MacCurdy donated funds for the construction of a small museum to house the artifacts found in this and other ruins. The building was completed during the summer of 1931.

CRATER LAKE

In recognition of many years of service as chairman of the Committee on Public Lands of the House of Representatives, during which time important park legislation was enacted, Congress authorized, by act approved May 14, 1930, the construction within the boundaries of Crater Lake National Park of a memorial to the late Representative Nicholas J. Sinnott of Oregon.

Following this recommendation an attractive stone building was constructed on Victor Rock just inside the rim of Crater Lake. The

structure, with its broad parapet looking out over the lake, serves as an orientation point for all park visitors. (See fig. 24.) A gift of \$5,000 from the Carnegie Corporation has made possible the installation of instruments and numerous exhibits which assist the visitor in



FIGURE 24.—A view of Crater Lake as seen from the rim wall. Wizard Island, a perfect little volcano, is reflected in the deep blue waters of the lake. At the left partially hidden in a stand of mountain hemlock is the Sinnott Memorial building where visitors may view the lake from an unusually fine vantage point and at the same time learn something of the geologic history of the region

interpreting the geologic history of the lake and in appreciating the relationships between the scenic and the scientific. The installations at Sinnott Memorial as well as the general development of the educational program at Crater Lake have likewise been carried on under

the supervision of Dr. John C. Merriam. Here again, as at Grand Canyon and at Yellowstone, an educational experiment has been arranged to determine the best means of presentation.

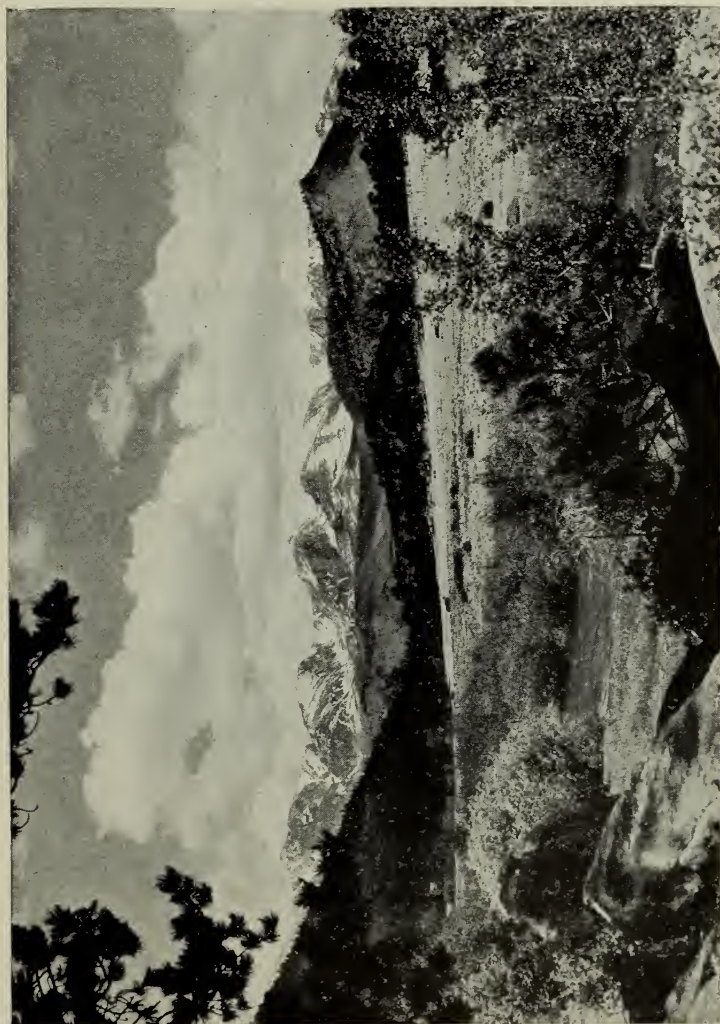


FIGURE 25.—A view of the Rocky Mountain Front Range from Estes Park. The small glaciers and snow fields hidden away among the higher peaks are remnants of mighty ice masses which sculptured the U-shaped valleys of the park. Guided trips into the high country are regular features of the educational program of the park

ROCKY MOUNTAIN

In 1931 Government appropriations made possible the construction of a museum and information office in Rocky Mountain National Park. The building contains several very attractive habitat groups of local birds and small mammals donated by the Jonas Brothers, of Denver. The Colorado Museum of Natural History cooperated in securing specimens and in the preparation of accessories to the

groups. The museum serves as the center of educational activities in the park.

HAWAII

Through the generosity of the Hawaiian Volcano Research Association and the contribution from Hui O Pele funds, an excellent museum building has been constructed of volcanic rock at Uwekahuna Bluff and donated to Hawaii National Park. It consists of a large lecture room, approximately 50 by 25 feet, with adjoining small rooms for office and photographic laboratory space, and a museum room, 40 by 20 feet, adjoining which is the seismograph room.

LASSEN

Between Manzanita and Reflection Lakes in Lassen Volcanic National Park, Mr. and Mrs. B. F. Loomis established a museum as a memorial to their daughter, Mae. The gift was made in order that the many valuable photographs of the eruption might be properly housed. This museum, constructed of softly tinted native stone, and 40 acres of land were donated to the National Park Service in 1929. The main building is 72 feet long and 27 feet wide and has an oval roof with 20 skylights. Extending from this main building in the form of a T is another building, 27 by 52 feet, which contains wild-life exhibits. The main building is devoted primarily to volcanic exhibits, including a photographic history of Lassen Peak during its recent eruptions.

In a separate building, constructed on the same plan as the central museum, is an exhibition seismograph so arranged that the public may watch its operations at all times. The seismograph instruments were installed by the United States Geological Survey.

ACADIA

An interesting museum containing relics of the Stone Age period of Indian culture, established near the Sieur de Monts Spring in Acadia National Park, was deeded to the Government in August, 1930. The museum and its equipment, together with an endowment, were provided through the generosity of the late Dr. Robert Abbe, of Bar Harbor and New York, and friends inspired by his interest and rare enthusiasm. A perpetual lease for its maintenance and operation was given the museum trustees by the Government, as the trustees hold an endowment fund of \$60,000 for this purpose. An archeologist is in charge of the museum during the summer season.

MESA VERDE

Unique among national-park buildings is the Mesa Verde archeological museum constructed in 1924 along the lines of pueblo archi-

texture. (See fig. 26.) The original structure was made possible by the generous donations of Mrs. Stella M. Leviston, of San Francisco, and John D. Rockefeller, jr. Additional units have been added in recent years, and the installations have been augmented with archeological material of prime importance. The quality and scope of the exhibits make this little museum one of the most valuable in the United States in its specialized field.

MOUNT RAINIER

The small museum at Longmire Springs in Mount Rainier National Park, although temporary in character, has materially con-



FIGURE 26.—The archeological museum at Mesa Verde National Park. Many fine relics of pueblo culture are to be found in the exhibit rooms. The accumulation of valuable material taken from the cliff dwellings makes this little museum one of the finest of its kind in the country

tributed to the educational program. New displays have been prepared and several donations from the University of Washington have added to the exhibit collection.

In the community building at Paradise a temporary museum has been established. Hotel guests and campers visit the exhibits which portray the park features.

SEQUOIA

Extensive collections dealing with the natural-history features of Sequoia National Park are exhibited in the small museum at Giant Forest. Indian baskets given to the park by the late Jesse B.

Agnew, of Visalia, Calif., constitute one of the principal attractions in the exhibit rooms. Due to limited space and the fire hazard in the temporary museum building, many exhibits can not be displayed.

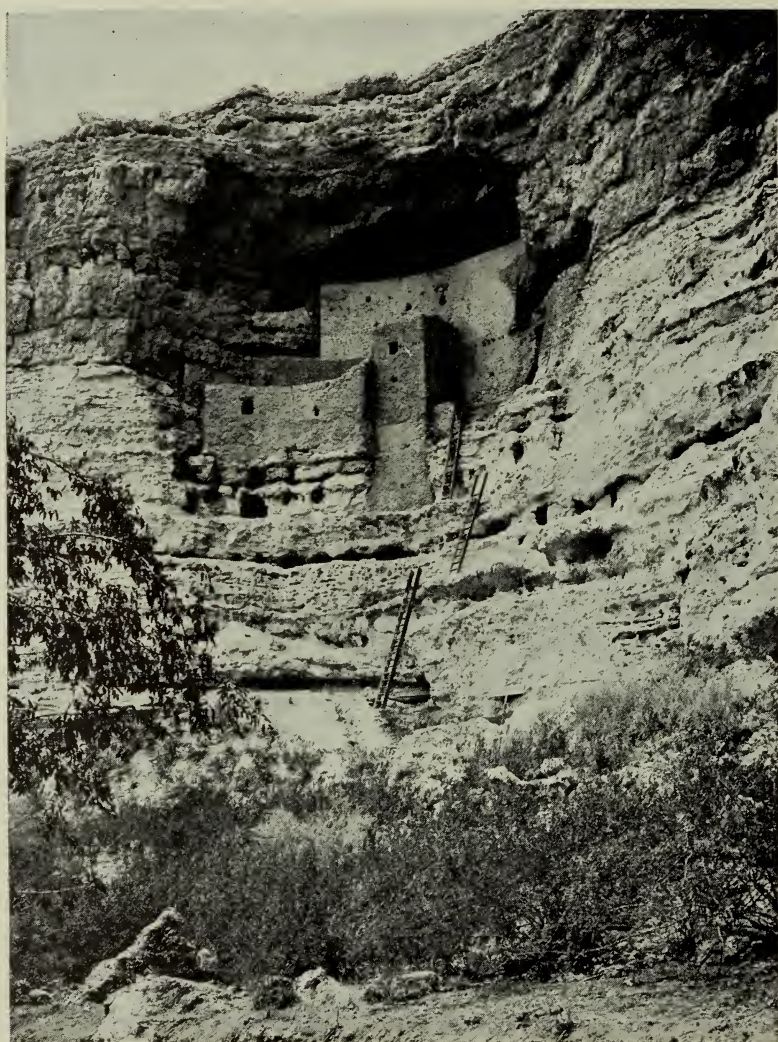


FIGURE 27.—One of the cliff dwellings at Montezuma Castle National Monument, Ariz. Archeological and historic record found here indicate that an advanced civilization existed in this region in prehistoric times

NATIONAL MONUMENTS

Several of the national monuments have museum collections which are inadequately housed in temporary buildings. This situation occurs at Aztec Ruins, Gran Quivira, Montezuma Castle, and Tuma-cacori. Other monuments have recently acquired museum space. At Petrified Forest National Monument a combined museum and

administration building was completed in 1931. Exhibits explaining the geology of the region are being installed. At Casa Grande National Monument one wing of the new administration building has been made available for museum purposes.

Museum development throughout the park system is moving ahead steadily, and plans are under way for the installation of exhibits in several of the parks where new buildings are now being constructed. It is essential, however, that this phase of the educational work move cautiously. The Service is feeling its way toward an ideal relationship between field and museum activities in the national parks. There is a place for both in the educational program.



FIGURE 28.—An interior view of the Yosemite Museum Library, which is available to visitors at all seasons. Valuable reference books and current nature magazines are to be found here

LIBRARIES

Most of the major parks have built up small reference libraries for the use of the educational staff. In only a few instances, however, has it been possible to provide a public reading room. In Yosemite there is a very attractive library in the museum building. (See fig. 28.)

Yellowstone also has developed a fine technical reference library much used by the staff and open also to the public. Branch county libraries have been established in two or three parks, but in such cases the books available are not of particular value to the naturalist or historian. With the increase in use of the park educational facilities by field classes from colleges, universities, and high schools, it is

becoming essential that complete reference libraries be available in all major parks. This need is being met as rapidly as possible.

NATURE NOTES AND TRAIL-SIDE NOTES

In all national parks where permanent naturalists are in charge of the educational activities there is issued each month an attractively illustrated mimeographed publication known as *Nature Notes*. This contains a series of short articles on natural-history subjects and serves to acquaint the visitor with the interesting features of the park. In many cases the historic element is prominent in the edu-



FIGURE 29.—An interior view of the Fishing Bridge museum, where special exhibits have been prepared to illustrate the bird life of the Yellowstone Lake region. The second room is devoted to geology, and at the extreme end of the building is a small library and reading room

cational program, and articles pertaining to discovery, early trade routes, and happenings with the Indians are frequently included in the publication. This has resulted in the building up of a mailing list composed of many who have visited the parks and also of many who have never had this opportunity. Hundreds of schools receive *Nature Notes* regularly from several different parks. These serve as excellent natural-history material for the classroom.

In Yosemite, through the cooperation of the Yosemite Natural History Association, *Nature Notes* has been published as a printed booklet with several photographic illustrations. Rocky Mountain *Nature Notes* was the second to appear in printed form.

In connection with the development of a complete educational unit in Yellowstone, it was evident that the motorist needed some guidance in the understanding of park features. This realization led to the preparation of a publication entitled "*Trail-side Notes*." The pamphlet is arranged in two columns with vignettes giving the outlines of the particular points of interest to be noted along the route. Below each drawing is a brief but reliable statement regarding the natural-history features. *Trail-side Notes* have been worked up for several of the main-traveled routes in Yellowstone, with the result that the motorist may add greatly to the value of his visit to the park. More and more the visitor is learning how to appreciate



FIGURE 30.—The Yosemite School of Field Natural History gathered around the camp fire for informal discussion. Several members of the Park Service naturalist staff are present, each contributing to the program

the country through which he travels. The reaction to *Trail-side Notes* is such as to warrant the extension of this means of helping the public.

YOSEMITE SCHOOL OF FIELD NATURAL HISTORY

The Yosemite School of Field Natural History is a summer school for the training of naturalists, where emphasis is placed on the study of living things in their natural environment. The school was founded in 1925 in answer to a demand for better trained naturalists for the Yosemite Nature Guide Service. Furthermore, there was need for a training not furnished by the universities. The California Fish and Game Commission cooperated with the National Park Service in making this school possible. The staff is composed of

Dr. Harold C. Bryant, assistant director of the National Park Service, Charles A. Harwell, park naturalist, and the regular Yosemite ranger-naturalist force. The term lasts seven weeks, corresponding with the University of California summer session at Berkeley. The last week of the field period is spent in making studies at timber line.

Two years of college work, or the equivalent, is required of those registering. There is no tuition but there is a registration fee of \$5. Thus far each class has been limited to 20. Students are housed in a circle of tents.

As the name implies, emphasis is placed on intensive field work and each student is expected to know and to identify all of the more common Yosemite trees, shrubs, wild flowers, insects, fishes, amphibians, reptiles, birds, and mammals. The work is of university grade, although for the present no university credit is offered. A certificate showing that the work has been satisfactorily completed is issued. The course is not a duplicate of university summer work but is supplementary thereto, for it stresses first-hand information gained from the living thing. Field observation and identification occupies 60 per cent of the student's time. Graduates of this school are filling positions as nature guides in parks and summer camps throughout the country. Many of the naturalist positions in the National Park Service are held by graduates of this field school.

THE YOSEMITE JUNIOR NATURE SCHOOL

The Yosemite Junior Nature School is planned for those children wishing to study the wild life of Yosemite National Park under the leadership of a ranger naturalist. Many features of the trail-side are brought to the attention of the keen young observers. There are usually several volunteer workers who assist the ranger naturalist during the 6-week session.

The work is divided into six subjects. Each subject is taken the same day every week, the course being organized so that a child attending only one day will learn a complete lesson. To those attending any one course throughout the full session, and showing satisfactory progress, a certificate of completion is awarded.

Classes meet at the museum building each morning, where fine relief maps of the park, a collection of mounted and fresh flowers, specimens of trees, etc., are available for study. A nature walk follows the discussion at the museum and during its course children are encouraged to ask questions as to the "why" of the objects encountered along the way. The school is divided into groups based on ages and grades.

The valley itself is one of nature's greatest outdoor museums. An abundance of material within easy walking distance of the museum makes it possible to conduct practically all of this work out of doors.

COLLEGE AND UNIVERSITY FIELD CLASSES

Utilization of the national parks and national monuments by universities and colleges as outdoor classrooms to supplement academic study of the natural sciences is increasing. Many of the outstanding educational institutions of the country are taking advantage of the exceptional opportunities for such field work, notably Princeton



FIGURE 31.—A large labeled photograph which serves to orient the visitor. Several of these have been covered with glass to protect them against the rain and placed at exceptionally good orientation points in Yosemite National Park. They are proving very popular and instructive

University, Clark University, University of Virginia, Western Reserve University, Montana State University, University of Missouri, University of North Carolina, and University of California. (See fig. 32.)

It is desired to encourage this use of the parks and monuments, for it is realized that these areas are the ideal outdoor laboratories for practical study of geology, biology, archeology, and other field sciences.

The National Park Service cooperates gladly with all such study groups, arranging facilities so that field work and demonstrations

can be most effectively accomplished. Members of the educational staff in the various parks render valuable assistance.

RESEARCH

Proper interpretation of park features by ranger naturalists is dependent upon the possession of accurate scientific knowledge. This needed basis for the educational work is being secured through the cooperation of Government bureaus, universities, and scientific institutions, and through the building up of a staff of field naturalists equipped to undertake scientific research. The intention of the Park Service in launching a research program is not to duplicate



FIGURE 32.—The Yosemite Museum serves as a laboratory for field classes. This class, conducted by Prof. Edward O. Essig of the University of California, shown in the foreground, spent seven weeks in Yosemite National Park. The museum served as headquarters throughout this period

work done elsewhere nor to trespass upon fields amply covered by other Government bureaus, but solely to gather the scientific information necessary to the development of the museum, educational, and wild-life administration programs of the national parks.

Studies undertaken by the Park Service deal with questions of particular interest to science, and the publication of the results contribute to the furtherance of knowledge and education throughout the country. Such researches serve as an extraordinary stimulus for development of knowledge in the fields represented, by reason of the fact that they come to the attention of a large majority of investigators and students visiting the parks in a state of open-mindedness

and relaxation, and desirous of learning something of the unique phenomena there presented.

In 1929, as a privately supported enterprise under the auspices of the National Park Service, George M. Wright, Joseph S. Dixon, and Ben H. Thompson undertook a survey of animal life in the national parks to determine the problems most needing solution and to secure basic data for the building of a wild-life policy for the parks. Realizing the importance of this wild-life survey, the Park Service in 1931 appointed Mr. Dixon field naturalist, and Mr. Wright and Mr. Thompson park naturalist aids. The work is now being carried on

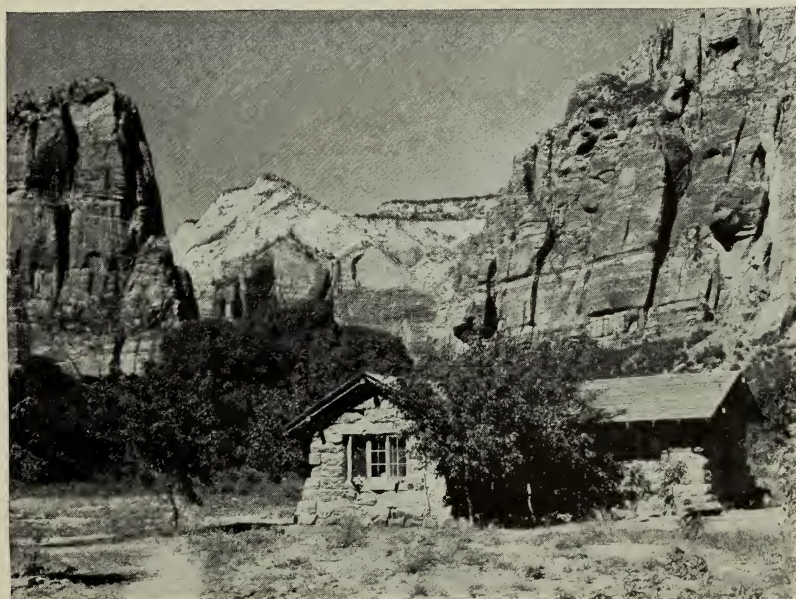


FIGURE 33.—The small natural history museum in Zion National Park. Many excellent rock specimens and biologic exhibits are on display. In a special cage close to the museum building is a collection of reptiles and amphibians

under a cooperative arrangement, funds being supplied by Mr. Wright and the National Park Service. This field research staff undertakes the solution of wild-life problems of purely national-park importance.

In the field of earth sciences research is being carried on by members of the Park Service scientific staff. During the summer season of 1931 Dr. Wallace W. Atwood, Jr., one of the assistants in the Washington office, conducted special physiographic studies in Crater Lake National Park. The results of his investigations have been incorporated in the Crater Lake educational program. Associated with the researches in geology and physiography are those dealing

with history and archeology. It is anticipated that studies in these fields will be conducted by the Park Service historian and other members of the historical staff recently appointed.

A number of geological, geophysical, and paleontological studies in Grand Canyon, Yellowstone, Yosemite, Lassen, and certain other parks have been carried forward by the Carnegie Institution of Washington and the National Academy of Sciences. A study of the geology of Yosemite National Park, by François E. Matthes, of the United States Geological Survey, has been brought to completion and a report published. The University of California Museum of Vertebrate Zoology made a thorough biological survey of Lassen Volcanic National Park and published a report thereon. There have been many archeological studies carried on in Southwestern parks and monuments by the Bureau of Ethnology, the Carnegie Institution of Washington, and other scientific organizations. The Bureau of Plant Industry has cooperated in plant disease investigations and the Bureau of Entomology in insect investigations and control.

This brief review of researches, carried on by Government bureaus, scientific institutions, and individuals, gives an idea of the character and amount of material which is being made available for the educational work in the national parks. The Branch of Research and Education has developed its unique program on the basis of authentic scientific and historic information. It is believed that in this way only can the educational program achieve the success which is essential to its growth and inclusion in the National Park System.

PART II

HISTORY OF EDUCATIONAL MOVEMENT

PART II

HISTORY OF EDUCATIONAL MOVEMENT

The use of the national park domain as field laboratories began many years ago when a few universities conducted field courses into the wilderness areas which later became national parks. As early as 1899 Prof. Rollin D. Salisbury escorted University of Chicago geological classes into what afterwards became Glacier National Park. Drs. Thomas C. Chamberlin, Wallace W. Atwood, and J. Paul Goode followed his example. Harvard University classes visited Grand Canyon under the guidance of Prof. William Morris Davis. Dr. Douglas W. Johnson took Columbia University classes into several national parks. In this manner a dozen universities might be listed that took advantage of the exceptional opportunity to study science in the Nation's parks.

Shortly after the establishment of the National Park Service in 1916 the germ of the educational idea came into being. As first director of the National Park Service, Stephen T. Mather early launched his plans for the development of an educational program. In 1917 Robert Sterling Yard was appointed as chief of the educational division. Additional information circulars were prepared and a beautifully illustrated National Parks Portfolio was issued. These publications contained material of particular educational value and were enthusiastically welcomed by park visitors.

In the field John Muir, of the Sierra Club, had attracted interest to national parks and stimulated in many persons a desire to study the geologic and biologic features of these areas. Enos Mills, in Rocky Mountain National Park, had developed nature guiding and had written articles describing methods used. Many others interested in the out-of-doors also had a part in drawing attention to the desirability of field studies conducted in the open.

In June of 1918, realizing the growing importance of national parks as field laboratories for educational institutions, a National Park Educational Committee was organized by Dr. Charles D. Walcott, of the Smithsonian Institution. This committee, numbering about 75 members, was composed of university presidents and representatives of leading conservation organizations throughout the country. By May of 1919 this committee merged into the National Parks Association and Mr. Yard left the Park Service to become associated with this new organization.

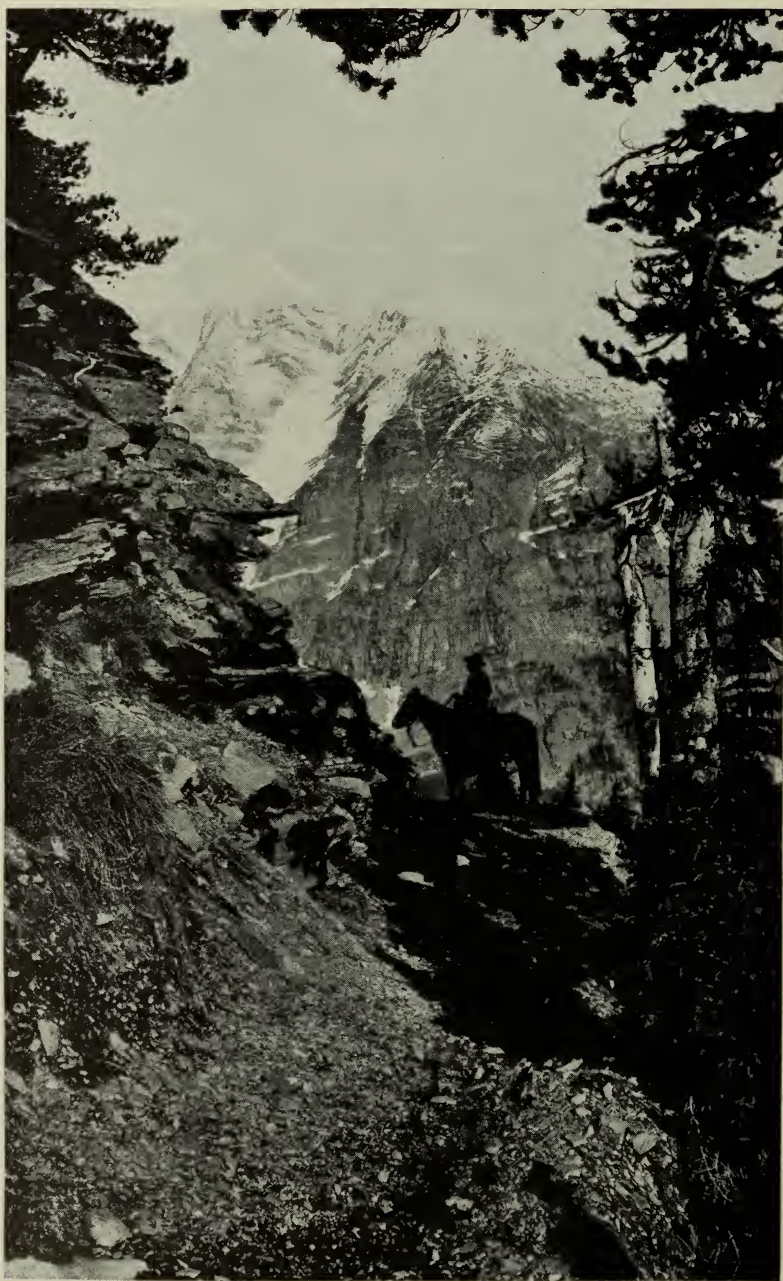


FIGURE 34.—Magnificent mountain scenery in the wilderness of Glacier National Park. On foot or on horseback the traveler may wander over the trails which lead to the beauty spots of the park

DEVELOPMENTS IN THE PARKS

While plans were being formulated in Washington to advance educational work in the parks, far away on the Pacific coast nature-guide work was finding its way into Yosemite. The concept of nature guiding in reality was a product of the world survey which brought the idea from Europe and planted it in America. In 1918 the California Fish and Game Commission sent its educational director to Yosemite National Park to deliver a number of lectures. As a stimulus to further interest in natural sciences, field trips were offered. This service met with immediate popularity and the following year saw a more extensive program developed at other places in California.



FIGURE 35.—A naturalist telling the story of Yosemite Valley to a small group gathered at Glacier Point, Yosemite National Park

Mr. Mather and certain friends having become keenly interested in the educational possibilities of the parks, were greatly attracted by this work, and, in 1920 they supported the movement with private funds. In that year Dr. Harold C. Bryant and Dr. Loye Holmes Miller conducted trips afield and gave lectures in Yosemite and laid the foundation for later work. The same year Milton P. Skinner was appointed park naturalist in Yellowstone National Park and a program of Government guiding and lecture service began. In 1921 two rangers were assigned to educational work, and the following year this number was increased to five. Thereafter the work in this park expanded rapidly.

In the spring of 1921, through a cooperative arrangement with the California Fish and Game Commission, the National Park Service instituted a "free nature guide service" in Yosemite. The aim of this service was to furnish useful information regarding trees, wild flowers, birds, and mammals, and their conservation, and to stimulate interest in the scientific interpretation of natural phenomena. The means used to attain this aim were: Trips afield; formal lectures, illustrated with lantern slides or motion pictures; 10-minute camp-fire talks, given alternately at the main resorts of the park; a stated office hour when questions regarding the natural history of the park could be answered; a library of dependable reference works, and a



FIGURE 36.—A group of visitors at Cliff Palace, Mesa Verde National Park. Specially selected and instructed ranger guides conduct all visitors to and through the ruins. At special gatherings through the day, and around the camp fire in the evening, the superintendent and rangers tell the story of the cliff dwellers and of the prehistoric cultures in the Southwest

flower show where the commoner wild flowers, properly labeled, were displayed. Occasionally, visiting scientists helped by giving lectures.

Coincident with the above development, the National Park Service began the interpretation of park phenomena by means of museum exhibits. Ansel F. Hall, previously in charge of information for Yosemite National Park, was made park naturalist for that park in 1921 and developed a museum which was installed in a temporary building opened to the public in that year.

Enlarged programs marked the year 1922, and by 1923 Glacier National Park, with the aid of Montana State University, had inau-

gured nature-guide service, thus becoming the third park to establish the work. Here also emphasis was placed on a lecture program. In that year Director Mather, realizing the importance of the rapidly expanding educational program at Yosemite, designated Ansel F. Hall as chief naturalist to extend the field of educational development to other parks. The years 1923 and 1924 saw beginnings made at Grand Canyon, Mount Rainier, Rocky Mountain, and Sequoia National Parks. A year later Zion was added to the list of parks undertaking educational work. In 1923 Carl P. Russell was appointed park naturalist in Yosemite National Park and Mr. Hall thereafter devoted himself to developments in all the parks.

In order to develop a plan of operation, Director Mather appointed Dr. Frank R. Oastler to investigate the educational work



FIGURE 37.—A corner in the museum reading room at Mesa Verde National Park. An excellent collection of books on the archeology of southwestern United States is available for use by park visitors

being carried on, and, in collaboration with Chief Naturalist Hall, to draw up a general policy. Doctor Oastler spent four and a half months in the field during the summer of 1924. An organization plan was prepared. This outline of the various educational activities defined the duties of the chief naturalist and of the park naturalists, and advocated the development of an "educational working plan" for each park which would contain a statement regarding the qualifications and training of the staff, an outline of each educational activity, plans of necessary buildings, necessary equipment, and required budget. This report also recommended that "each park should feature its own individual phenomena rather than try to cover the entire field of education."

In 1924 the American Association of Museums made a careful study of the educational opportunities in the national parks and developed certain concrete plans looking toward the establishment of natural history museums in a number of the larger parks. As a result of this study the Laura Spelman Rockefeller Memorial became interested in the museum program and donated funds through that association for the construction of an adequate fireproof museum building, including equipment and other important accessories, in Yosemite. Later, additional donations made further museum construction possible in this and other parks.



FIGURE 38.—Lassen Peak, one of the few active volcanoes in North America. On the slopes of this mountain the student of geology may study many interesting features of volcanic activity

In the spring of 1925, on the occasion of an inspection of the new Yosemite Museum, the Secretary of the Interior approved a plan submitted by Director Mather providing for the establishment of the headquarters of the Educational Division at Berkeley, Calif., under the direction of Chief Naturalist Ansel F. Hall. Administration of the division was handled from these headquarters from July 1, 1925, until the establishment of the Branch of Research and Education in Washington on July 1, 1930. During this period administrative plans were developed for the educational activities of each individual park in cooperation with the park superintendents and the park naturalists. At the same time a plan of administration for the division as a whole was drafted. This was approved by the director on June 4, 1929, and has formed the basis of operation and administration in the field.

COMMITTEE ON STUDY OF EDUCATIONAL PROBLEMS IN THE
NATIONAL PARKS

In 1928, realizing the importance of stimulating this growth of educational activities in the parks, the Secretary of the Interior appointed a committee to make a thorough study of and to report on the educational possibilities of the national parks. The Laura Spelman Rockefeller Memorial covered the expenses of the committee. This group of educators—consisting of Dr. John C. Merriam, chairman, and Drs. Hermon C. Bumpus, Harold C. Bryant, Vernon Kellogg, and Frank R. Oastler—made field studies during the summer of 1928 and rendered a preliminary report full of practical suggestions for promoting the educational and inspirational aspects of the parks.

This preliminary printed report issued January 9, 1929, contained the following:

1. A statement of general principles agreed upon by the committee for guidance in study of the educational problem of national parks.
2. A group of specific recommendations relating to organization of educational work in national parks, together with an outline of program for such work.
3. A memorandum regarding necessity for further research on problems involved in the educational program of national parks.
4. Recommendations by the committee relative to methods of initiation and development of an educational program for Lassen Volcanic National Park, this being a park in which educational work has not been developed. The recommendations presented relative to this park may be considered both as covering a general type of organization and as having reference specifically to the needs of Lassen Park.

Particularly significant among the specific recommendations made by the committee are the two following which relate to organization of educational work in national parks:

1. In view of the fact that the purpose of national parks is to be found in their inspirational and educational values, there should be an advisory body of five to seven of the ablest men conversant with national parks, appointed by the Secretary of the Interior, on nomination by the Director of National Parks, to serve without salary, whose duty it shall be to advise the Director of National Parks on matters pertinent to educational policy and developments in national parks.
2. There should be a division of education coordinate with other divisions of the National Park Service directed by a man with the best of scientific and educational qualifications who shall administer the educational program in the parks.

NATIONAL PARK SERVICE EDUCATIONAL ADVISORY BOARD JOINS
IN PROGRAM

The committee's recommendations were favorably received and on March 29, 1929, the Secretary of the Interior invited several eminent

scientists and educators to serve as members of a National Park Service Educational Advisory Board. The group included those already serving on the educational committee, with the exception of Dr. Harold C. Bryant, and in addition Drs. Clark Wissler, Wallace W. Atwood, and Isaiah Bowman. At the same time the committee on study of educational problems in national parks was enlarged by the appointments of Dr. Atwood and Dr. Wissler.

During the summers of 1929 and 1930 members of the educational committee and advisory board conducted field investigations in the parks and monuments. As an indication of the work accomplished attention is called to the fact that one member of the committee



FIGURE 39.—Devils Tower National Monument, Wyo. A striking view of the huge columns of lava which rise 600 feet into the air to form one of the well-known landmarks of early exploring days. This great monolith records an interesting scientific story

visited 13 of the 22 national parks and 11 of the 36 national monuments. Another member visited 11 of the parks and 3 of the monuments. The chairman visited 9 of the parks and other members a lesser number. Individual reports of these studies have been prepared and put into permanent form by means of gathered proof sheets. These have proved of great assistance to the Park Service in the development of the educational program.

A final report of the committee was submitted to the Secretary of the Interior on November 27, 1929, detailing points discussed at the committee meetings and pointing out responsibilities and opportunities for education and research in the fields of history, earth sciences, and life sciences. The following topics were reviewed:

1. The term "education" with possibility of redefining educational functions with special reference to use and enjoyment of national parks.
2. Limitation of educational functions in accordance with the principle that the Federal Government should handle only such educational matters as may not be cared for adequately by other means.
3. Division of functions into recreational, intellectual, and spiritual. Recognition of recreational use as a naturally correlated function, and expressed both in physical exercise and in mental or spiritual relaxation.
4. Special responsibilities and opportunities for education and research in the field of history.
5. Peculiar responsibilities for education and research in the field of earth sciences.



FIGURE 40.—A nature-guide party in the Temple of Sinawava, Zion National Park. The park naturalist is explaining the origin of the giant red-walled canyon and pointing out certain interesting features of the vegetation peculiar to the region

6. Special opportunities for education and research in the field of life sciences.
7. Exceptional opportunities for education and research in the field of appreciation of nature.
8. Consideration of recommendations which may strengthen the development of education through research in the specific aspects of education mentioned above.
9. Consideration of specific problems of individual national parks with reference to recommendations which may be made for betterment of conditions or initiation of new work.

In addition to the individual and committee reports mentioned above there are certain specific recommendations made by the advisory board.

The following relating to personnel and organization of the proposed educational unit are especially significant:

1. * * * that the position of educational director of the National Park Service should be filled by a man of the best scientific and educational qualifications.

2. * * * that headquarters of the educational division should be a part of the central organization of the National Park Service in Washington.

3. * * * that two assistants be appointed and that the two assistants together with the head should represent the subjects of geology, biology, anthropology, and history.

BRANCH OF RESEARCH AND EDUCATION IS ESTABLISHED

Acting upon the above recommendations of the Educational Advisory Board and the Committee on Study of Educational Problems in National Parks, the Park Service established a Branch of Research and Education in Washington to coordinate the various educational phases of park work. Accordingly, on July 1, 1930, Dr. Harold C. Bryant, a biologist, was appointed assistant director, in charge of all educational activities, and Dr. Wallace W. Atwood, Jr., assistant in charge of work relating to the earth sciences. A year later Verne E. Chatelain was appointed assistant in charge of historical and archeological developments, thus rounding out the Washington office educational personnel as it was originally conceived by the advisory board.

With this recognition of park educational work and the completion of the individual studies within the parks, the main work of the Educational Committee was completed and the group disbanded February 21, 1931.

In the same year Dr. John C. Merriam, chairman of the Advisory Board since its establishment, resigned his position and membership on the board due to increased work in other activities. Dr. Hermon C. Bumpus was appointed to the chairmanship and shortly thereafter Dr. Waldo G. Leland was selected to fill the vacancy caused by Dr. Merriam's resignation. The board continues to function, meeting at least once annually to consider park educational problems, to make recommendations relative to those problems presented by the Director of the National Park Service, and to report on field studies conducted by its members.

HOW THE BRANCH OF RESEARCH AND EDUCATION OPERATES

Administrative activities of the Branch of Research and Education are centered in Washington. The assistant director in charge of the branch organizes and directs all matters pertaining to the conservation and interpretation of the natural phenomena in the national parks and monuments. In association with the two assistants of the

branch, he coordinates the work within the office and the educational and research work in the field to assure economical and efficient administration and development.

Responsibility for the educational program rests with the administrative head of the park or monument in which the program is being conducted. The Branch of Research and Education determines all matters of general educational policy and is helpful in planning park educational work. The formulation of specific policies is left to the superintendent and the park naturalist. The organization of

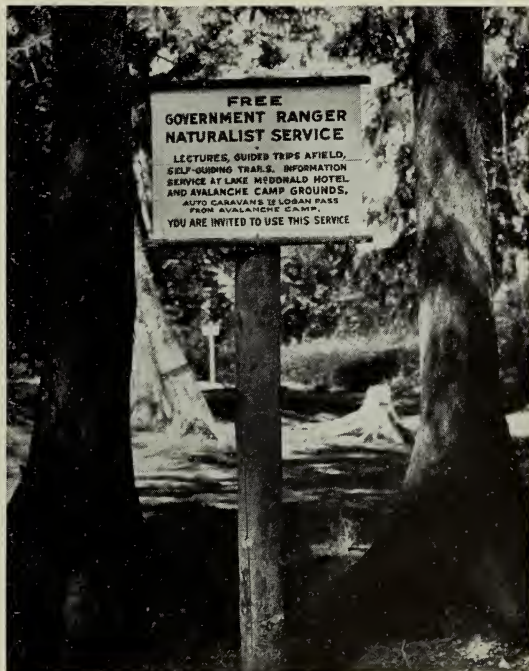


FIGURE 41.—Announcement of free Government naturalist service at Sprague Creek Camp Grounds, Glacier National Park

the ranger-naturalist staff and the execution of the educational program are duties of the park naturalist.

In addition to administrative work, the Washington office educational staff prepares and revises scientific and historical literature dealing with the parks. The assistant director in charge of the Branch supervises the revision of material relating to biology. The assistant in charge of work relating to earth sciences digests special publications on the geology and physical features of the parks, coordinates all geological research projects and prepares useful scientific publications. The assistant in charge of historical and archeological

developments coordinates research in these fields and organizes historical material for presentation to the park visitors.

The work of preparing speeches, radio talks, press releases, special magazine and newspaper articles, and maintaining contact with special organizations interested in park publicity is under the jurisdiction of the division of public relations, a section of the Branch of Research and Education. The activities of this division result in dissemination of accurate information regarding the Park Service and the educational work. This division also edits the various park information circulars, scientific bulletins, and special Park Service



FIGURE 42.—The historic Moore House in the Colonial National Monument area, Yorktown, Va. The photograph was taken following the 1931 restoration. On October 18, 1781, the American, French, and British commissioners met in this house and drew up the articles of surrender for Cornwallis' Army, thus bringing the Revolutionary War to a successful conclusion

booklets. With but few exceptions, all this material is published by the Government Printing Office, Washington, D. C.

Recent educational developments have awakened interest in the national parks to such a degree that it has been necessary to materially increase the scope of the publications. Information circulars are being constantly revised and brought up to date and the scientific material is receiving special attention. A series of scientific booklets is being prepared. This task will require several years, but it is hoped that eventually there will be a complete set of educational booklets for each national park. The subjects covered will include geology, biology, archeology, history, and geography. Each book-

let will be well illustrated, short, and authoritative, the information being secured through careful research by well-known scientists and members of the Park Service research staff. It is anticipated that this series of scientific booklets will supplement the field-naturalist activities and will fill a definite need in the educational program not only in the parks but throughout the country.

Demand for slides, photographs, and motion pictures has increased tremendously in the past years, with the result that the loan service has been greatly augmented. Visual education material available for free public distribution in 1931 amounted to 2,200 slides (all of them colored), 8,000 photographs, and 31 reels of motion-picture film.

Sound pictures are being requested by schools, clubs, and various organizations throughout the country, desiring to feature the national parks in their programs. It is hoped that funds will be provided for the production and distribution of such distinctly educational films.

The recent transfer of George A. Grant, the official park photographer, from field headquarters to the Washington office should operate to make the photographic department far more valuable to the Service and the public. Mr. Grant has secured several thousand excellent negatives of the parks and is contributing much to the visual-education program.

In developing this work, the public utility operators of the parks materially assisted by donating the sum of \$5,000 to be used in purchasing necessary equipment and supplies and for defraying the salary expenses of a clerk to assist in the upkeep of this material. The Service has arranged to continue the work which the operators made possible.

Through the generosity of Dr. Frank R. Oastler, the Service has acquired numerous excellent motion pictures and colored slides of wild animals in the parks. As a result of combined effort there is now available a fine collection of negatives and prints of the chief scenic features and points of educational interest in the parks and monuments.

FIELD HEADQUARTERS

From July 1, 1925, to July 1, 1930, the educational work was coordinated by Ansel F. Hall, chief naturalist, from the field headquarters office of the National Park Service at Berkeley, Calif. Through the courtesy of the University of California, ample space was secured for the educational work. A fine group of office and laboratory rooms in Hilgard Hall was made available to the National Park Service without charge.

Since the establishment of the Branch of Research and Education, with headquarters in Washington, the field office has continued to serve as a laboratory and office for the senior park naturalist and forester, the fire-control expert, field naturalists, and chief photographer. Although the photographic department was transferred to Washington on July 1, 1931, the important work at field headquarters has continued unchanged, the laboratory functioning as a direct aid to the naturalist and museum programs in the parks.

Efforts at field headquarters are being centered on the preparation of relief models and museum exhibits of various kinds. It is planned that a museum preparator work under the direct supervision of the senior park naturalist and field naturalist. Library developments in the parks and the preparation of statistical reports are duties assigned here.

Field headquarters is scheduled to become the winter laboratory for wild-life and museum research and the field educational work of the Service.

On July 1, 1929, Carl Russell, former park naturalist in Yosemite National Park, was appointed field naturalist and assigned to the special field of museum planning and technique. Due to the important museum projects in Yellowstone the greater part of the museum advisor's time has been devoted to Yellowstone problems.

APPENDIX

SELECTED BIBLIOGRAPHY OF ARTICLES RELATING TO EDUCATIONAL WORK IN NATIONAL PARKS

ADAMS, CHAS. C.

1923. The relation of wild life to the public in national and state parks. Proc. Second Nat. Conference of State Parks, 1922, pp. 129-147.

ALBRIGHT, HORACE M.

1929. General plan of administration for the educational division. U. S. Department of the Interior, National Park Service. 16 pp., mimeo. report.

-
1930. A review of national park developments during 1930. American Civic Annual 2:3-6.

-
1930. National park planning. American Civic Annual 2:50-54.

Annual Reports of the Director of the National Park Service. 1917-1931. U. S. Government Printing Office, Washington, D. C.

ATWOOD, WALLACE W.

1930. Mission of the National Parks Association. National Parks Bulletin 10 (58). (March.)

-
1931. What are national parks? The American Forests 37 (9):540. (September.)

ATWOOD, WALLACE W., JR.

1930. Our national parks as field science laboratories. Meeting of National Council of Geography Teachers. (Dec. 27, 1930.)

BRYANT, HAROLD C.

1920. Yosemite nature guide service. Report of the director of the National Park Service to the Secretary of the Interior for fiscal year ending 1920. Government Printing Office, Washington, D. C. 423 pp., illus.

-
1921. Nature play for the kiddies. Outers' Recreation 64:122-124, 153, 9 figs. (February.)

-
1925. Nature guiding. American Nature Association Bul. 17. 12 pp.

-
1929. Nature lore for park visitors. American Forests and Forest Life 35 (8):501-505. (August.)

-
1930. Yosemite School of Field Natural History. The Nature Almanac, Am. Nat. Assoc.:139-140.

-
1931. Research and education in the national parks. American Civic Annual 3:13-17, illus.

1931. Universities of the Out-of-Doors. School Life 16 (8):152. (April.) Committee Report.

BRYANT, HAROLD C.—Continued.

1929. Reports with recommendations from the Committee on Study of Educational Problems in National Parks. (Jan. 9–Nov. 27.)

1931. Individual Reports of the Committee on Educational Problems in National Parks.

DEMARAY, A. E.

1922. Nature guiding in our national parks. *National Municipal Review* 12: 56–58. (February, 1923.)

DUNN, HARRY H.

1921. Uncle Sam teaches nature study to sixty thousand in West. *Dearborn Independent*, p. 11, illus. (Nov. 26.)

GOETHE, C. M.

1915. Learning to read a roadside. *Nature Study Review* 11: 273–279, 3 figs.

HALL, ANSEL F.

1923. The Educational Development of Yosemite National Park. *Sierra Club Bulletin* 9 (4): 413–416.

1927. Educational activities in national parks. First Pan Pacific Conference on Education, Rehabilitation, Reclamation, and Recreation: 397–410. U. S. Government Printing Office.

HAMLIN, CHAUNCEY J.

1927. Studying nature in place. First Pan Pacific Conference on Education, Rehabilitation, Reclamation, and Recreation: 435–438. U. S. Government Printing Office.

HORNADAY, WILLIAM T.

1910. The right way to teach zoology. *The Outlook*: 256–263.

JAGGAR, T. A.

1927. The opportunity for scientific research in the national parks of America. First Pan Pacific Conference on Education, Rehabilitation, Reclamation, and Recreation: 463–470. U. S. Government Printing Office.

LUTZ, FRANK EUGENE.

Nature trails and experience in outdoor education. American Museum of Natural History. Miscellaneous publication No. 21, October, 36, p. 11, pa. 10 cents.

MATHER, STEPHEN T.

1927. Administration of the national parks of the United States. First Pan Pacific Conference on Education, Rehabilitation, Reclamation, and Recreation: 447–450. U. S. Government Printing Office.

1927. National parks as educational centers. *National Republic* 14 (10): 33–34, 60–61. (February.)

MERRIAM, JOHN C.

1926. Educational opportunities in national parks. *Estes Park Trail*: 31. (May 21.)

1927. Inspiration and education in national parks. *National Parks Bulletin* 9 (53). (July.)

1929. The meaning of national parks. *Amer. Forests and Forest Life* 35 (8): 471–473. (August.)

MILLS, ENOS A.

1919. The children of my trail school. *Saturday Evening Post*: 49–53, illus. (Mar. 1.)

MILLS, ENOS A.—Continued.

1920. The adventures of a nature guide; 14:271, illus. (Doubleday, Page & Co., New York.)

National Parks Bulletin.

1929. Park System to be equipped for education, 9 (56):1-2.

The Nature Almanac—a handbook of nature education.

1930. The American Nature Association. 399 pp.

VINAL, WILLIAM G.

1917. Nature Guiding. 486 pp. Slingerland-Comstock Co., Ithaca, N. Y.

WILBUR, RAY LYMAN.

1929. What the national parks mean to the people of the United States. American Civic Annual 1:5-9.

YARD, ROBERT STERLING.

1926. The book of the national parks. 444 pp., illus. Chas. Scribner's Sons, New York City.

NATIONAL-PARK PUBLICATIONS OF SCIENTIFIC NATURE¹

THE NATIONAL PARKS PORTFOLIO

This portfolio is the best descriptive work regarding our national parks and monuments sold by the Government. It contains 274 pages, is securely bound in cloth, and has many beautiful illustrations. The current edition, the sixth, was printed in 1931. Price, \$1.

CRATER LAKE NATIONAL PARK

Forests of Crater Lake National Park, by J. F. Pernot. 1916. 40 pages, including 26 illustrations. Contains descriptions of the forest cover and of the principal species. Price, 20¢.

GLACIER NATIONAL PARK

Origin of the Scenic Features of Glacier National Park, by M. R. Campbell. 1921. 44 pages, including 25 illustrations. Contains a general account of the forces that have caused the development of the mountain ranges, the valleys, and lakes of Glacier National Park. Price, 15¢.

Wild Animals of Glacier National Park. The Mammals, by Vernon Bailey; The Birds, by Florence Merriam Bailey. 210 pages, 94 text figures, 37 plates, including map. 1918. Describes the birds and animals both popularly and scientifically; tells how the visitor may identify them. Price, \$1.

Plants of Glacier National Park, by Paul C. Standley. 1926. 110 pages, including 5 color plates and 150 text figures. Price, 50¢.

MOUNT RAINIER NATIONAL PARK

Features of the Flora of Mount Rainier National Park, by J. B. Flett. 1922. 48 pages, including 40 illustrations. Contains descriptions of the flowering trees and shrubs in the park. Price, 25¢.

Forests of Mount Rainier National Park, by G. F. Allen. 1922. 32 pages, including 26 illustrations. Contains descriptions of the forest cover and of the principal species. Price, 20¢.

Mammals and Birds of Mount Rainier National Park, by Walter P. Taylor and William T. Shaw. 1927. 249 pages, including 109 illustrations and maps. Price, 85¢.

¹ For sale by Superintendent of Documents, Washington, D. C.; also on sale in major national parks.

ROCKY MOUNTAIN NATIONAL PARK

The Geologic Story of Rocky Mountain National Park, by Willis T. Lee, 1930. 89 pages, including 45 plates and 6 text figures. Contains detailed description of trails and scenic features, as well as very interesting account of the geologic and geographic development of the park. Price, 50¢.

Mountaineering in the Rocky Mountain National Park, by Roger W. Toll. 1921. 106 pages, with 25 plates and 1 large map. Contains directions for climbing principal mountains of the Rocky Mountain Park region. For beginners as well as experienced mountaineers. Price, 50¢.

SEQUOIA AND GENERAL GRANT NATIONAL PARKS

See publications listed under "Yosemite National Park."

YELLOWSTONE NATIONAL PARK

Geological History of Yellowstone National Park, by Arnold Hague. 1928. 24 pages, including 10 illustrations. Contains a general résumé of the geologic forces that have been active in the Yellowstone National Park. Price, 10¢.

Geysers of the Yellowstone National Park, by Walter Harvey Weed. 1928. 32 pages, including 23 illustrations. In this pamphlet is a description of the forces which have produced the geysers. Price, 10¢.

Fossil Forests of Yellowstone National Park, by F. H. Knowlton. 1928. 32 pages, including 15 illustrations. Contains descriptions of the fossil forests of the Yellowstone National Park and an account of their origin. Price, 10¢.

Fishes of the Yellowstone National Park, by Hugh M. Smith and W. C. Kendall. (Bureau of Fisheries Document 904.) 1921. 30 pages, including 16 illustrations. Contains descriptions of the species and lists of streams where found. Price, 5¢.

YOSEMITE NATIONAL PARK

Geologic History of Yosemite Valley, by François E. Matthes. 137 pages, including 87 illustrations and 5 maps. 1930. An authoritative account of the evolution of the Yosemite Valley based on detailed geologic investigations. Describes the successive ice invasions that took place during the glacial epoch and for the first time traces the preglacial history of the valley back to its beginning. Besides numerous illustrations of the present features of the Yosemite Valley the volume contains a series of bird's-eye views showing the general form and character of the valley at each stage in its development. Price, \$1.10.

Forests of Yosemite, Sequoia, and General Grant National Parks, by C. L. Hill. 1928. 40 pages, including 23 illustrations. Contains descriptions of the forest cover and of the principal species. Price, 10¢.

The Secret of the Big Trees, Yosemite, Sequoia, and General Grant National Parks, by Ellsworth Huntington. 1928. 24 pages, including 44 illustrations. Contains an account of the climatic changes that are indicated by the thickness of the growth rings in the big trees, and gives a comparative statement of the climatic conditions in California and Asia during a period of 3,400 years. Price, 5¢.

The Story of Yosemite Valley, by F. E. Matthes. Making of American Scenery. Paper No. 1. 1922. 4 pages. Price, 5¢.

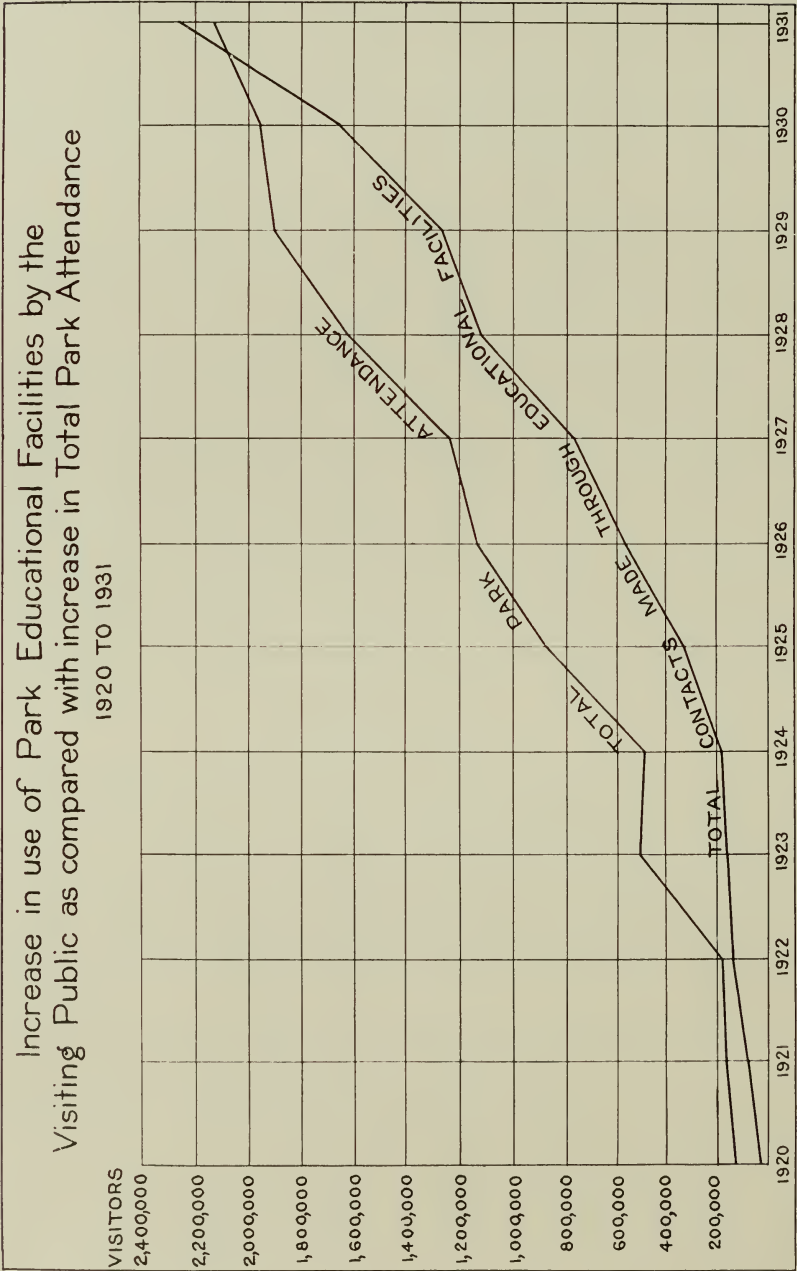
PANORAMIC VIEWS

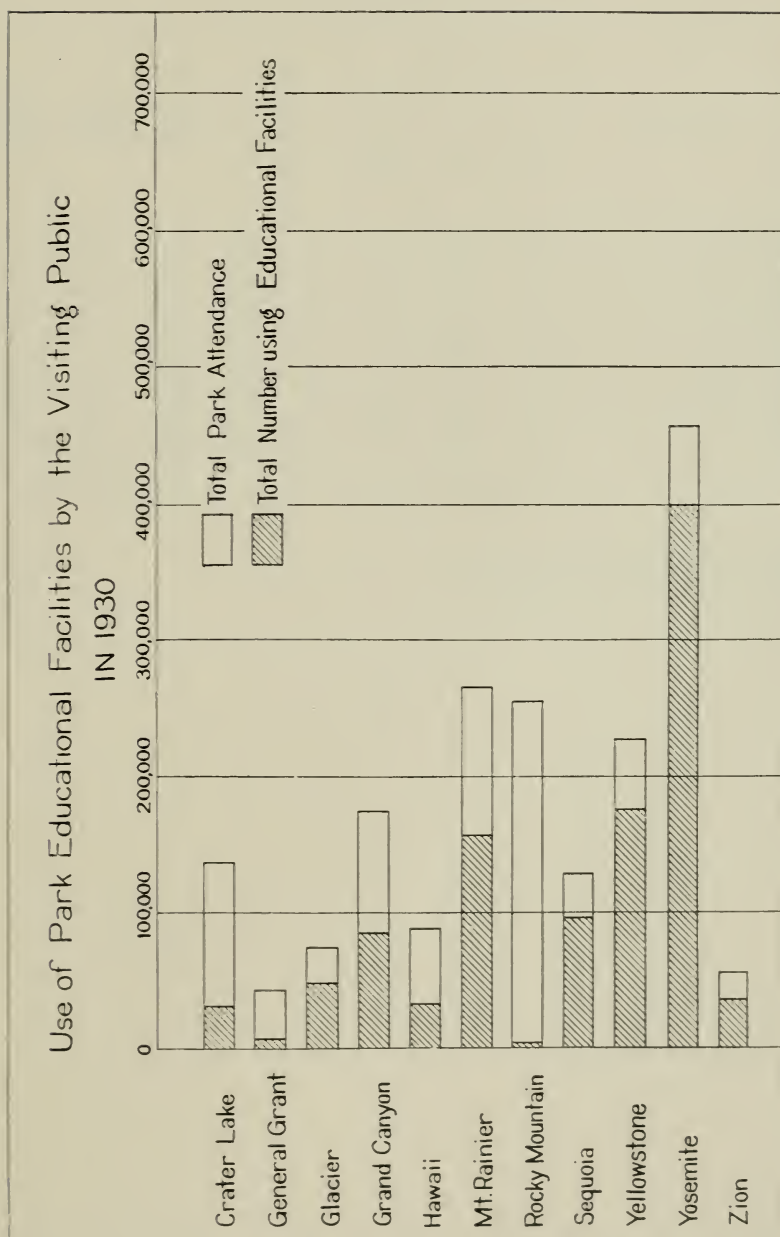
The panoramic views listed below are based on accurate surveys and give an excellent idea of the configuration of the surface as it would appear to a person flying over it. The meadows and valleys are printed in light green, the streams and lakes in light blue, and cliffs and ridges in combinations of color, and the roads in light brown. The lettering is printed in light brown and is easily read on close inspection, but merges into the other colors when the sheet is held at some distance.

Panoramic View of Crater Lake National Park. 16½ by 18 inches; scale 1 mile to the inch. Price, 25¢.

Panoramic View of Glacier National Park. 18½ by 21 inches; scale 3 miles to the inch. Price, 25¢.

Panoramic View of Mesa Verde National Park. 19 by 22½ inches; scale, three-fourths mile to the inch. Price, 25¢.





SUMMARY OF CURRENT EDUCATIONAL ACTIVITIES IN THE
NATIONAL PARKS*Year ended September 30, 1931*

National park	Field trips			Lectures		Museum attend- ance	Total contacts made	Park visitors during period
	Num- ber	Attend- ance	Auto cara- vans, attend- ance	Num- ber	Attend- ance			
Bryce Canyon.....	170	2,994		278	13,353		16,347	41,572
Crater Lake.....	132	1,608	1,860	123	14,051	18,347	35,866	170,284
General Grant.....	43	1,365		47	15,686	8,080	25,131	51,995
Glacier.....	575	7,856	2,717	426	28,180	26,400	65,153	63,497
Grand Canyon.....	274	4,468	6,995	1,008	48,698	65,637	125,798	156,964
Grand Teton.....				63	2,675	3,970	6,645	62,000
Hawaii.....	110	1,251		190	6,062	4,834	12,147	124,932
Lassen.....	21	154		4	188	8,677	9,019	56,833
Mesa Verde.....	226	4,090	15,103	118	7,301	13,669	40,163	18,003
Mount Rainier.....	444	7,421		425	71,854	299,325	378,600	293,562
Rocky Mountain.....	54	759	148	78	4,139	13,429	18,475	265,663
Sequoia.....	104	3,711	2,151	468	69,458	22,506	97,826	143,573
Yellowstone.....	1,579	80,318	42,394	1,315	553,633	216,064	892,409	221,248
Yosemite.....	678	19,029	5,636	1,672	251,949	274,989	551,603	461,855
Zion.....	203	6,802		389	18,127	13,710	38,639	59,186
Total.....	4,613	141,826	77,004	6,604	1,105,354	989,637	2,313,821	2,191,167

Total number of contacts on all field trips..... 141,826

Total number of contacts on all auto caravans..... 77,004

Total number of contacts at all lectures..... 1,105,354

Total number of contacts at all museums..... 989,637

Grand total..... 2,313,821



