

THE

ADAMS NATIONAL HISTORIC SITE

Quincy, Massachusetts

ADAM 7


AUTHOR	
Wilhelmina S. Harris	
TITLE	
Furnishings Report of the Old House	
DATE	ISSUED TO
2/15/79	RAY BRICKER

ADAM 7

Property of
The National Park Service

~~Quincy, Mass
Nov 24, 1970~~

ADAM 7



Digitized by the Internet Archive
in 2012 with funding from
LYRASIS Members and Sloan Foundation

<http://archive.org/details/furnishingsrepor06harr>

THIS IS THE FURNISHINGS

REPORT

OF THE OLD HOUSE

THE ADAMS NATIONAL HISTORIC SITE

QUINCY, MASSACHUSETTS

VOLUME VII

PREPARED BY

WILHELMINA S. HARRIS

SUPERINTENDENT

THE ADAMS NATIONAL HISTORIC SITE

DATE: 1966 - 1968

TABLE OF CONTENTS

VOLUME VII

	Page
Description of the China and Porcelain of the Pan Closet	623 - 646
Historical Association of the Middle Pantry	647
Description of the China and Porcelain of the Middle Pantry	648 - 693
Historical Association of the Butler's Pantry	694
Description of the Furnishings, China and Porcelain of the Butler's Pantry	695 - 721



ILLUSTRATION 383VIEW OF THE FLOOR OF THE PAN CLOSET

The Pan Closet in which there is a display of china was formerly the storage room for groceries, cooking utensils, and kitchen china. When the area was given to the United States Government, there was neither cooking utensils nor kitchen china left in the Old House. Since there were so many pieces of important china stored away, the Adams family suggested a display of this china in the Pan Closet where it could be seen by the visitor.

On the floor of the Pan Closet are three English Silver plated Covers for large platters which were used at the Embassy in London by Mr. and Mrs. Charles Francis Adams. These covers were used to keep the roasts warm while being taken from the Kitchen to the Dining Room. It seems only natural that they would have needed protection of the hot dishes since the kitchens in England are usually some distance from the dining room.

In the southeast corner is a mid-nineteenth century earthenware whiskey bottle with black lettering: Glen Gary Very Old Scotch Whiskey
Trade mark - (a corkscrew form)
Proprietors John Hopkins & Co.
London and Glasgow

Mark: pressed underglaze - Port-Dundas
Pottery Co.
Glasgow

As you look straight ahead in the Pan Closet, there are two tall milk glass vases. These vases were also used at the Embassy in London and were never put on display at the Old House since the Adams family thought them inappropriate for such a simple house. These Vases have floral and gold decorations. Size: Height - 24 1/2", Diameter - 8".

In the southwest corner on the floor are four wrought iron tongs which were originally intended for coal; however, in the Brooks Adams era he always kept a new one which he had put on the table for him to steady the turkey or large roast of beef while he carved it.

Not shown in the illustration, but located in the northwest corner are two silver Warming plates described earlier in Illustration 381.



ILLUSTRATION 384FIRST SHELF OF PAN CLOSET

In the extreme left corner of the first shelf of the Pan Closet is a view of the Gold Service showing first, a large Bon Bon Dish, a cluster of glasses, the gilded bronze large Fruit Dish, another cluster of glasses and a matching Bon Bon Dish. Standing against the wall are two Coalport Plates with the green band bordered on either side by gold which will be described in a separate illustration. The gilded, bronze Dessert Service was used by Mr. and Mrs. Charles Francis Adams when they were in London. There is an interesting reference which we quote from Edward Brooks to Charles Francis Adams in London and also a portion of a letter written by Henry Adams to his father, Charles Francis Adams, from Paris in February, 1862:

"Paris Jan'y 17. 1862.

Yours of the 16th came to hand this morning and I lost no time in attending to your commission. Unluckily my wife is unable to go out, and Fanny, owing to a cold and the very severe weather today, is also confined to the House. I however read your letter to her and she said that a diplomatic gentleman whom you know had dined lately with the Emperor and told her what the decorations of the table were and which he assured her were the very last style. I then took Sidney into my counsel, and we went together to Odiot who is the great man in that line. We had a service spread on a table, and after mature deliberation fixed on the following. A superb centre basket for flowers very elaborately ornamented, but low, as the style now is, so as not to intercept the view across the table. Two Side Baskets for fruit, and two stands for the end of the table for bon-bons, or whatever you please. These two last have glass dishes instead of being solid like the others. The whole in gilt bronze. He promises to have them ready to send on Monday, so that you will have them in London on Tuesday morning. Now for the price. We found one hundred pounds we could not get what would produce a good effect. The set will cost 3,500 francs or \$700 which is considerably beyond the mark

ILLUSTRATION 384 (Continued)

but we thought it best to exercise the discretion you gave and not limit ourselves to the 1100. The candelabra are separate. The lights are not attached to the dishes. If you wish for candelabra you can order them at any time. I did not think to ask whether the packing was included but the Bill will show.... I shall be curious to know how our purchase will turn out, which if you are too busy let Abby tell us, because I know she will tell the truth.

Yours faithfully
Edward Brooks"

Portion of Henry Adams' letter to Charles Francis Adams:

"Paris Jan 20th., 1862

...it was thought best to send duplicates of the moveable glass dishes for sweetmeats for the two smallest vases. This will cause an addition of from 35 to 40 francs. But in case of accident it would be inconvenient not to have them. I followed your directions in getting one centre vase with four side ones. ...nervous till we know for certain how they are thought of. At all events they are in the very last style and by the tip top artists at this moment in Paris.

Paris 28 Feby. 1862. Your two dishes are ordered Cost fr. 750 (\$150). You could have four still smaller ones for fr. 800 if you thought them of more use... but I think you meant to complete the service you have...not enlarge it...

Henry Adams"

All of this tends to explode the theory that the younger Adamses had during the Adams Memorial Society Era when they attributed the Gold Service as something which was bought for the celebration of the Golden Wedding Anniversary of Mr. and Mrs. Charles Francis Adams. These references also confirm the opinion of Mr. Brooks Adams that it was a service used in London by his parents.

ILLUSTRATION 384 (Continued)SECOND SHELF OF PAN CLOSET

On the second shelf of the Pan Closet the visitor can see more of the Gold Service. The two Bon-Bon Dishes on this shelf have glass plates of high quality. At either end are Waterford Glass Funnels. Exactly which Adams bought them is not known, but by Brooks Adams tradition, it was his father. There are four Chinese export plates standing against the wall. These plates will be described in a later illustration. In the center of the shelf is a perfectly clear glass cake plate.

TOP SHELF OF PAN CLOSET

On the top shelf are two more Bon-Bon Dishes of the Gold Service, two clusters of glasses and a smaller clear glass cake stand in the center. Standing against the wall are two very fine porcelain plates which will be described in a later illustration. On either side of this shelf are clear glass funnels, and in each corner leaning against the wall are glass bowls. The one to the far left is Waterford Glass, while the one at the extreme right corner is English Cut Glass.

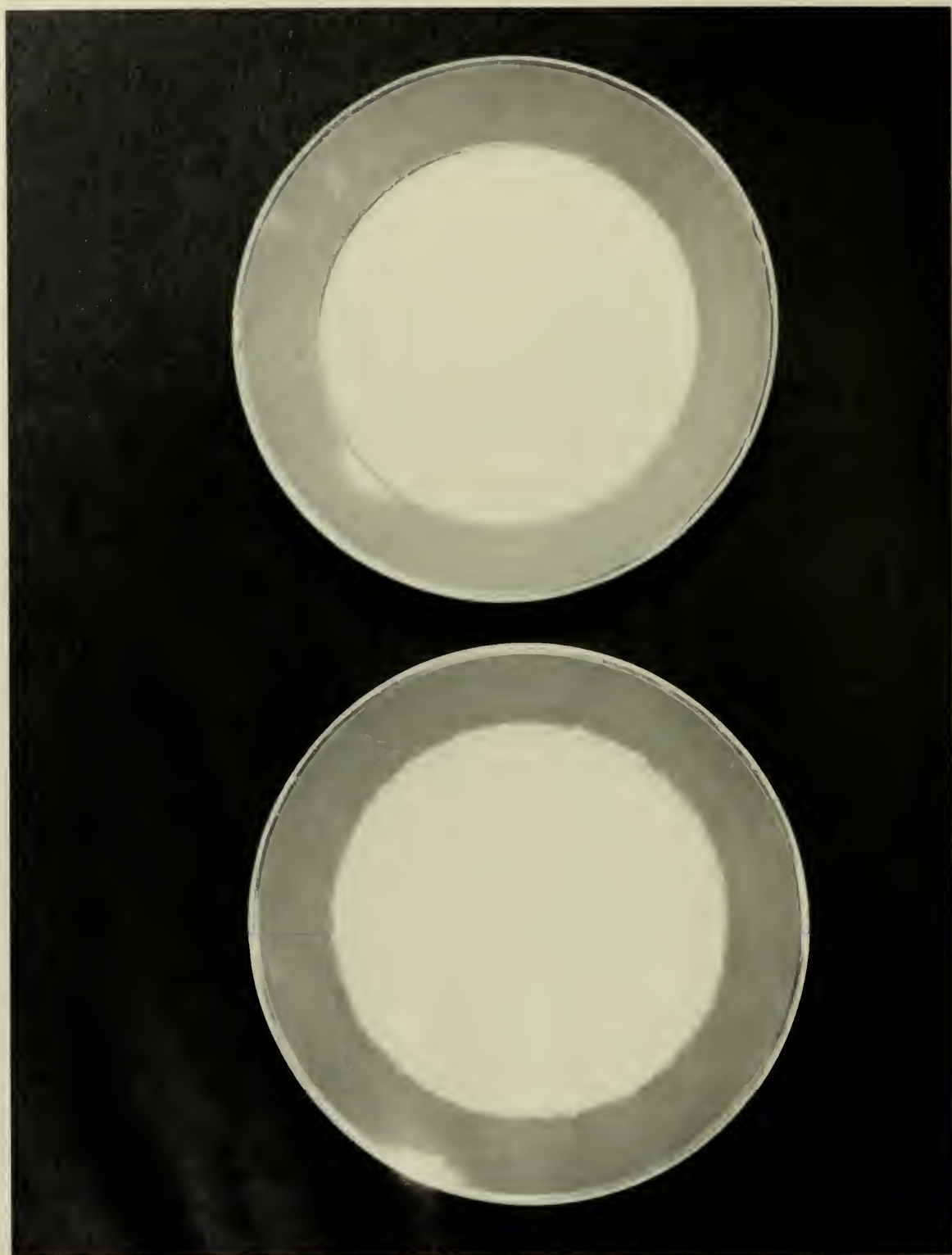


ILLUSTRATION 385

Title: Coalport China Plates

Date: 1840

Description: These plates are English Coalport China with a green and gold band around the outer edge. This set of china consists of one hundred and thirty-six pieces.

Size: Diameter - 9".

Reference: This Coalport China set has always been attributed to John Quincy Adams who is said to have used it in Russia. This apparently is in error because the china authorities all agree that this type of Coalport China was not made before 1840 - only eight years prior to John Quincy Adams' death.

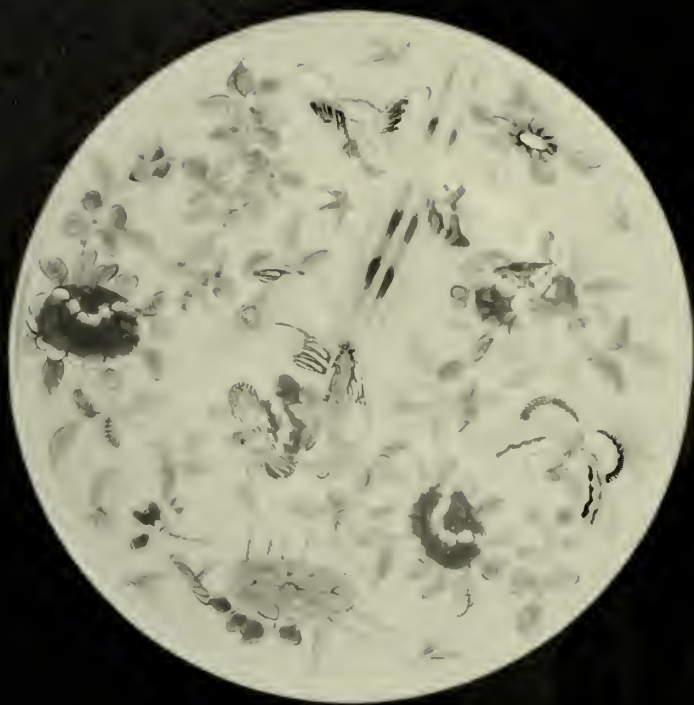


ILLUSTRATION 386

- Title: Chinese Export Plates
- Date: Early Nineteenth Century
- Description: These plates are of the finest Chinese Export porcelain. They have an underglaze field of Celadon green with a gilt edge and polychrome overglaze decoration of flowers, butterflies and in the center is a long plumed bird. On the back is a blue chop mark underglaze. They are in mint condition at the present time (1968). Size: Diameter - 9".
- Reference: It has not been determined as to who bought these plates.



ILLUSTRATION 387


- Title: Corn Flower Plates (Top Shelf)
- Date: 1785-1790
- Description: On the top shelf are two white porcelain plates which are decorated with blue corn-flower sprigs, green leaves and gilt trim design. They have an underglaze blue marking,  (The crossed flambeaux here shown are typically irregularly drawn.). This marking is similar to the Meissen and yet it has some French appearance. The plates were probably from the Paris manufacturer, Rue Fontaine au Roi, called "De la Courtille." Diameter - 9 1/4".
- Reference: These plates are attributed to John Quincy Adams.
- Comment: The corn-flower blue decoration was originated by Marie Antoinette and taken up elsewhere in Europe, notably Dresden and Nyon, Switzerland. The mark here, however, indicates a French origin.



ILLUSTRATION 388WEST VIEW OF THE PAN CLOSET

Most of the objects in this illustration of the west side of the Pan Closet will be described individually in illustrations to follow.

On the bottom shelf in this illustration is a small covered dish. Both the dish and cover are Chinese Export China, but they are not a matching set. They are Canton blue design.

On the second shelf is a modernistic cut glass sugar and creamer. Mrs. Brooks Adams enjoyed this set on her bed tray when her breakfast was served. The blue finger bowl with insert was probably bought by John Quincy Adams. The outside bowl was for washing the fingers, and the insert was for rinsing the mouth.

On the third shelf are three small English porcelain egg cups. On the bottom of each egg cup is the word "England," and underneath are the figures 9704 with an x under the figures. These numbers probably are the identification of the manufacturer. The decorations on the egg cups are flowers and tiny geometric circles with an aqua thread-like line around the top and bottom of the decoration. One of these is mended. Size: Height - 2 1/2", Diameter - 1 7/8".

On the top shelf are odds and ends of glass which Mr. Brooks Adams attributed to his mother. The pitcher will be described in a later illustration.



ILLUSTRATION 389FIRST SHELF WEST SIDE OF PAN CLOSET

- Title:** Tea Service (See Illustration 388)
- Date:** Late 18th century
- Description:** In the left hand corner of the first shelf on the west side of the Pan Closet is a Tea Set consisting of eleven pieces. It is creamware with a maroon transfer print of children at play. Mark: pressed, underglaze - WEDGEWOOD 36 JML
Printed, overglaze in black - Manfd for T. Goode & Co.
South Audley St.
London. W.
- Printed, overglaze in maroon - Personages
Wedgewood
Etruria England
Importe d'Angleterre
- The handle of the cream pitcher has been mended.
- Reference:** This Tea Service was used by Mr. and Mrs. Brooks Adams in the Paneled Room each afternoon for afternoon tea. It was Mrs. Adams' favorite Tea Service.



ILLUSTRATION 390

Title: Butter Dish (See Illustration 388)

Date: Early 19th century

Description: To the right of the Tea Service is a creamware butter dish with green and pink underglaze shell and floral swag decoration. There is a bee in a large gold cartouche which was the symbol of Napoleon. In the medallion is an eagle, and the medallion is enclosed with double laurel branches, suggestive of the United States seal emblems. Floral scrolls, swags and ribbons connect the designs. Cover has entwined laurel branches for inner border.

Mark: underglaze green -



FRANCE

(Perhaps Sevres with the monogram of an artist.)

Printed overglaze - Fabrique en France
Richard Briggs Co., Boston
Patented

Size: Height - 4", Diameter - 8".

Reference: This butter dish was used during the Charles Francis Adams Era and was much appreciated by Mr. and Mrs. Brooks Adams.




ILLUSTRATION 391

Title: Cruet

Date: 1795

Description: This interesting French Cruet with stopper has a shell skirt and scroll foot and a pineapple and shell finial. The salmon fluting extends from lip to hip with gilt flowers. There is also purple fluting from hip to base. It has a gilt lip and handle. The marking on the bottom is as follows:

heavy, underglaze  Fontainebleau, France Factory
Jacob Petit, 1795 onwards.

Size: Height - 9 1/2".

Reference: History is unknown.



ILLUSTRATION 392

Title: Plate, Cup and Saucer

Date: Early 19th century

Description: To the right of the French Cruet is a cup and saucer and a matching plate as seen in the general view, Illustration 388. The decoration on these china pieces consists of a white porcelain background, a blue border of yellow marguerite daisies, a row of aqua beads on each side of the blue border and a gilt edge around the center and outside edge of the plate. This porcelain china was made by Wedgwood in England. Mark: incised - Wedgwood.
Stamped:

Size of Plate - Diameter - 9"

Size of Saucer - Diameter - 5 3/4"

Size of Cup - Diameter - 3 1/2", Height - 3 1/2"



MARGUERITE

Reference: This china was used during the Brooks Adams Era but was said to have been purchased by Mrs. Charles Francis Adams during her sojourn in England, 1862 to 1868.

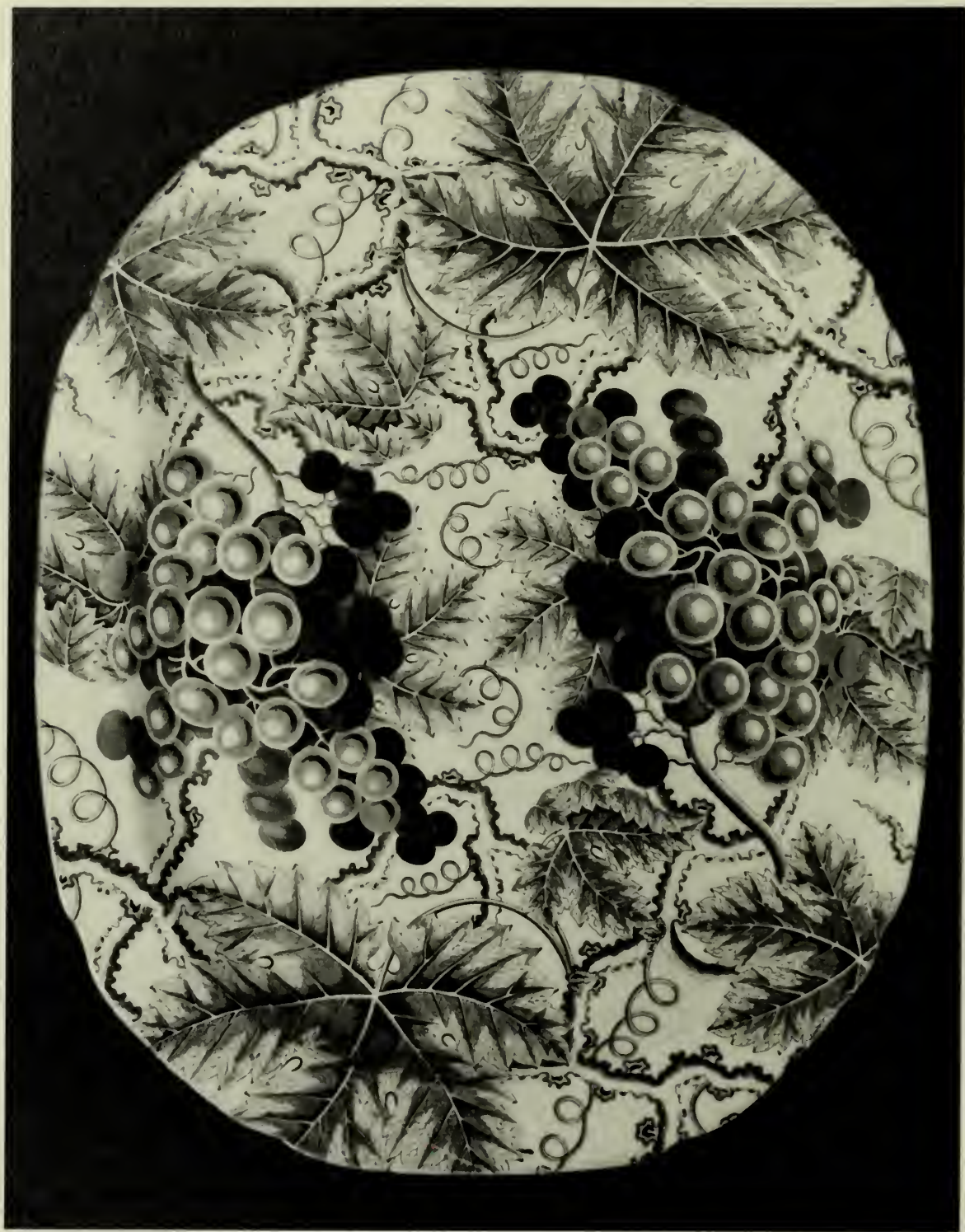


ILLUSTRATION 393

- Title: Platter
- Date: c. 1850
- Description: This earthenware, Staffordshire serving platter is much admired by the visitors. With a blue and white underglazed decoration of large bunches of grapes and full leaved vine, it makes an interesting display piece. It has crackled glaze and is almost rectangular in shape. Size: Length - 20",
Width - 17" approx.
- Reference: This platter goes back to the Charles Francis Adams Era and was used frequently by Brooks Adams.



ILLUSTRATION 394SECOND SHELF, SOUTHWEST CORNER

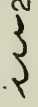
- Title:** Tea Service
- Date:** Late 18th century
- Description:** On the second shelf in the southwest corner is a white porcelain tea service with ribbed surface. The blue and white underglaze decoration is in three panels, each containing a delicate peony and branch design. Some pieces are stamped on the back in green, Royal Copenhagen with a mark:  23, 33, 53, and 55 on the different pieces. One d'emitasse cup has a broken handle.
- Reference:** Family tradition attributes this tea service to Mrs. John Quincy Adams. She was in Prussia in 1797 to 1801 while her husband was serving as minister, which serves to give creditability to the tradition.



ILLUSTRATION 395

- Title: Bowl and Saucer
- Date: c. 19th century
- Description: To the right of the modernistic cut glass sugar and creamer are three small Chinese Export porcelain bowls and saucers. There are six of these bowls and saucers. The other three are on display in the Middle Pantry. Each saucer has four floral designs separated by a sort of geometric line. The cups have the same type of floral design separated by cross marks. The color of blue is not of high quality.
- Reference: All tradition is lost, but this Chinese Export porcelain dates before 1890 when Brooks Adams assumed responsibility for the Old House.





ILLUSTRATION 396

- Title: Pitcher
- Date: Early to mid 19th century
- Description: On the top shelf in the west side view of the Pan Closet, Illustration 388, is a porcelain pitcher which has a narrow neck and is shaped like an hourglass. At the top of the handle is a masque head. The meandering branches with leaves and flowers is underglazed on the purple ground. It originated in England and was listed in the 1911 inventory. Though repaired, it is in good condition (1968).
- Reference: By family tradition it was purchased by Mrs. Charles Francis Adams in England before her return to the United States in 1868.



ILLUSTRATION 397GENERAL VIEW OF THE EAST SIDE OF PAN CLOSET

The more important objects in this section of the closet will be given separate illustrations. There are interesting odd bits of china and glass in this exhibit.

FIRST SHELF

Next to the platter is a Chinese Export small dish and cover - neither match. Both are Canton blue design. Next to the small dish is a covered glass syrup jar. The glass is English and of good quality, and the cover is porcelain with a bird perched in a bouquet of flowers painted upon it. The cover is encased in metal. To the right of the syrup jar is a fruit bowl which will be described in a later illustration. The plate standing against the wall is described in Illustration 392. Near the wall in the corner are two small black tin tea cans decorated with a Japanese floral design.

SECOND SHELF

In front of the Wedgwood plate on the second shelf are three tea bowls with saucers. These pieces of china have a blue and white transfer pattern decoration. They are of poor quality. In the corner is a serving dish which will be described in a later illustration.

THIRD SHELF

To the right of the green glass bowl on the third shelf is a beautiful crystal pitcher which will appear in a separate illustration. Near the corner is a curious porcelain fruit basket formed of fluted latticed stripes. It is mustard color with traces of red. The handles are pressed to the body of the basket.



ILLUSTRATION 398

- Title:** Fruit Bowl
- Date:** Late 18th century
- Description:** On the first shelf in the corner is a beautiful urn-shaped fruit bowl with a scalloped edge and a graceful pedestal. Both the pedestal and fruit bowl have a blue and white landscape transfer print decoration. It is Staffordshire. The English scene in the center of the fruit bowl is framed in a border of blue floral pattern decoration. Size: Height - 6 1/2", Diameter - 11".
- Reference:** This fruit bowl is attributed to Abigail Adams. She wrote to John Adams in France about wanting blue china. It seems likely that she purchased this before she left England in 1788. The Blue Canton, the Staffordshire and the Wedgwood were attributed to her by Brooks Adams. It is interesting to note that in the inventory of items sent from The Hague to John Adams there was a great deal of blue china included.



ILLUSTRATION 399

- Title:** Platter
- Date:** Late 18th century
- Description:** The large platter on the second shelf is creamware. The blue and white underglazed shell has a floral swag decoration. There is a small inner blue floral chain separating the border from the white part of the platter. Impressed on the under side is: Wedgwood, underglaze blue - Grosvenor Etruria, England.
- Size:** Length - 20".
- Reference:** The date of this china and the fact that on two occasions, November 13, 1780 and March 17-25, 1782, Abigail had written to John Adams to remind him of the blue dishes which she wished him to purchase indicates that all this pattern dates back to Abigail Adams.



ILLUSTRATION 400

Title: Cup and Saucer

Date: 1820-50

Description: The decoration on this pottery cup and saucer is Spatterware. The background is red and green, and the little schoolhouse shows three windows, a door and a chimney. The cup is handle^{le}ss. Pressed on the bottom of the saucer is the number "14". This type of pottery originated in Leeds or Staffordshire, England.

Size of Cup: Height - 2 1/2", Diameter - 4".

Size of Saucer: Diameter - 6".

Reference: Original ownership is not known.



ILLUSTRATION 401


- Title: Serving Dish
- Date: 1780
- Description: This Staffordshire serving dish and cover has a blue and white landscape scene print decoration. It is footed, and the edge of both the cover and the serving dish is scalloped. Mark: incised underglaze: *
- Size: Length - 12 1/2", Diameter - 10".
- Reference: These pieces are a part of the blue service which has always been attributed to Abigail Adams. The fact is substantiated by frequent references in her letters to John in the 1780's that she wished a large set of blue table porcelain.



ILLUSTRATION 402

Title: Plate

Date: Early 19th century

Description: On the third shelf in back of the crystal pitcher is a white porcelain plate. The decoration on this plate is a very classical styled initial "A" in pink and a pink band with red line edge. Underglazed and incised is the mark: 

Size: Diameter - 9".

Reference: There are several pieces of this service. It is the opinion of the writer that it must have been used by Mr. and Mrs. Charles Francis Adams. Constant use would account for there being only a few remaining plates of different sizes and a large platter. This china was not used during the residence of Brooks Adams, 1920 to 1927.



ILLUSTRATION 403

Title: Pitcher

Date: Unknown

Description: This cut glass pitcher is included because of it's beautiful proportions and the nice quality of clear cut glass. Any definitive judgment on this pitcher must be reserved for later study. Height - 7 1/2".

Reference: History unknown.

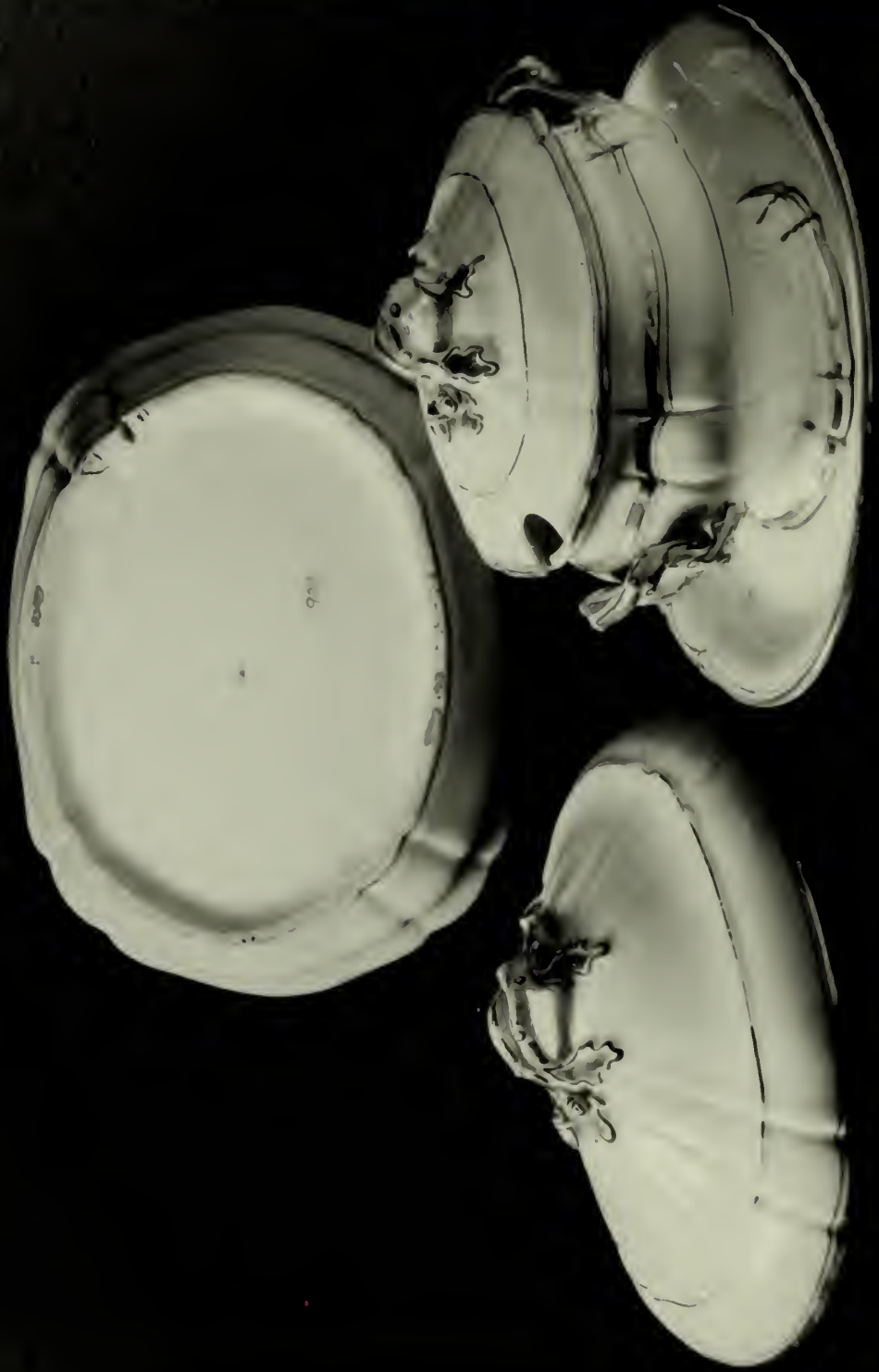


ILLUSTRATION 404

- Title:** Gravy Boat and Serving Dish
- Date:** Late 18th century
- Description:** On the top shelf in the west side view of the Pan Closet is a gravy boat and a serving dish of English porcelain which were at one time part of a large set of china. The gravy boat and cover have fluted edges with blue and gilt trim. The handles at the top are finished with a leaf design which resembles an oak leaf. Impressed underneath is the number "106".
- Reference:** Much of this set apparently was broken as a complete service cannot be assembled. Odd pieces indicate there was once a large dinner set.

HISTORICAL ASSOCIATION OF THE MIDDLE PANTRY

During the occupancy of Brooks Adams all the shelves on the south, west and north walls of the middle pantry were used for the storage of china. These closets containing the china had solid wooden doors. When the doors were open, you saw endless stacks of plates, saucers and serving dishes. During the regime of the Adams Memorial Society, glass doors were installed. The china was arranged in exhibit form - not exactly as it is today - because more patterns are included now than were used by the Adams Memorial Society. In order to make it easier, as an interpretive device, the shelves have been arranged somewhat according to ownership. For example, in Illustration 405 the lower shelf contains the Meissen China which was used by President John Quincy Adams and succeeding generations. The three top shelves show the china which was used from the time of President John Adams through the four generations. In this room, along with the Pan Closet in the kitchen, practically every type of china the Adamses used is exhibited for the visitor to enjoy.



ILLUSTRATION 405GENERAL VIEW OF THE SOUTH SIDE OF THE MIDDLE PANTRY

The china on the lower shelf is Meissen. The pieces shown are all serving dishes. There are no plates of this pattern at the Old House. Each of the serving dishes has a scalloped edge, and the decoration is blue and white onion pattern. Marked on the bottom of each plate is the Meissen stamp:



It is also included in the stem of the flower.

On the second, third and fourth shelves is the Chinese Export china which was used by President John Adams and his wife Abigail Adams. As mentioned several times previously, this china is attributed to Abigail due to her correspondence with her husband between 1780 and 1782.

On the second shelf on each side of the large platter are two Chinese Export soup plates with blue and white Willoware central decoration and the Fitzhugh border. Special mention is made of these plates since they are of very poor quality as compared with the other Chinese export china. On this shelf are two shell plates which will be described in a later illustration.

On the second and third shelves are a number of odd cups, some with handles and some without, but all are Chinese Export with the Canton blue design.

The top shelf contains plates and finger bowls which will also be described later.

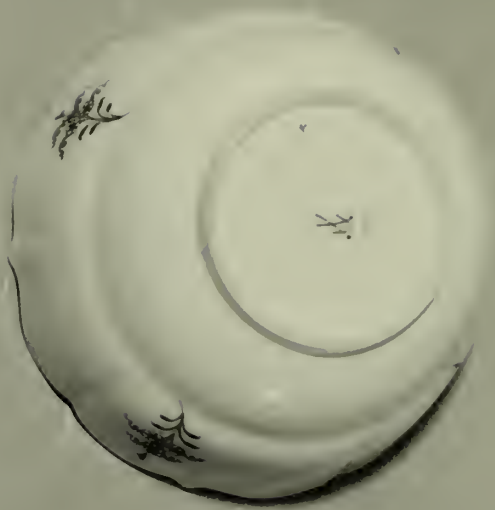


ILLUSTRATION 406

Title: Bowls

Date: c. 1775-1800

Description: On the bottom shelf of the general view is an impressive collection of Meissen china. This particular illustration shows two of the deep bowls with the full flower pattern used on all of the pieces. The blue is a clear bright blue; the outside border is decorated with small sprays, leaves and onions - hence it is often referred to as the onion pattern. In the center is a large branch with leaves and blossoms. Attention is called to the end of the stem which includes the cross swords marking used in the Meissen factory. The outside of the bowl also has blue sprays for decoration. Both the white and the blue are in sharp contrast to each other, making a very beautiful picture. On the bottom is the Mark:



Size: Height - 3 1/2", Diameter - 8".

Reference: It was Mr. Brooks Adams' theory that the reason there are only serving dishes in the Old House is that packing for travel was more difficult for the serving dishes than for plates. When Mrs. John Quincy Adams went to Washington as the wife of the Secretary of State, she is said to have taken with her the plates to this set which she had brought back from Prussia in 1801. The writer is informed that the Adams-Clement Collection has only one deep dish but a number of plates of this set. In the terms of the Will the household articles in Washington were left to the heirs of Mrs. John Quincy Adams' deceased son John. The Adams-Clement Collection was finally given to the Smithsonian Institute.

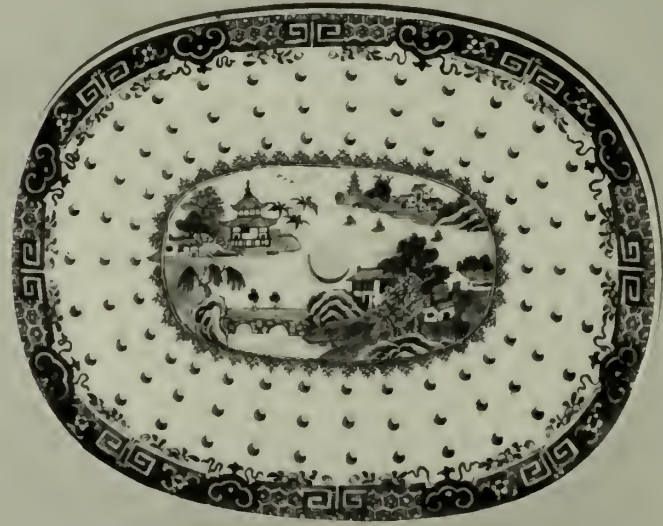


ILLUSTRATION 407

Title: Platter and Insert

Date: Late 18th century

Description: The large Chinese Export porcelain platter and perforated steamer attachment is of Willoware design and has a blue and white Fitzhugh border. This is a fish "drainer" since the liquid from the fish would not be desirable as gravy for the food.

Size of Platter: Length - 16", Height - 2 1/4".

Size of Insert: Length - 12 1/2", Width - 9 1/2".

Reference: This is a part of the service listed in the inventory of John Adams' Estate.



ILLUSTRATION 408

- Title: Serving Dish
 Date: Early 19th century
 Description: The blue serving dish with cover beside it is Chinese Export porcelain with the Canton blue and white design. Not only is the bottom of the dish decorated, but the outside of the bowl has a flower decoration. This dish has been repaired.
 Length - 19".
- Title: Sauce Boat
 Date: Early 19th century
 Description: The Chinese Export covered sauce boat has boar's head handles and a stem finial. The finial is a broken branch. The decoration is blue and white chrysanthemum and peony design. Length - 7".
- Reference: This piece is listed in the 1911 inventory.



ILLUSTRATION 409

Title: Bowl

Date: Late 18th century

Description: Against the wall on the second shelf are two Chinese Export porcelain leaf-shaped bowls. They each have a double whalehead upper edge. The decoration is Canton blue and white design. Size: Length - 10", Diameter - 9 1/2".

Reference: Part of the original set.



ILLUSTRATION 410

- Title:** Covered Custard Cups
- Date:** Late 18th century
- Description:** In this illustration are two covered custard cups of Chinese Export porcelain which have interesting strap handles and the lid has a strawberry finial. The design of both the covers and the cups is Canton blue and white.
- Size:** Diameter of Cups - 2 1/2", Height to top of Cover - 3".
- Reference:** Part of the original set.
- Title:** Sauce Boat
- Date:** Late 18th century
- Description:** The partially scalloped edge on each side of this sauce boat makes it very interesting. The stand is leaf-shaped. Both of these pieces have the Canton blue and white design decoration. **Size:** Length - 7 3/4", Height - 2".
- Reference:** Part of the original set.



ILLUSTRATION 411

- Title: Plate
- Date: Late 18th or 19th century
- Description: There are only a few pieces of Chinese porcelain in the Old House which was not intended to be exported. This plate, however, is one of the examples. It has a very simple scalloped edge. The decoration is blue and white design, and the border is of petals and the inner border a floral motif. The central medallion is a chrysanthemum and leaf design representing the month of October. Mark: underglaze blue - signifies one of the Pa Pao (the Eight Precious Things), part of a group of artistic devices called the Po ku (Hundred Antiques).
- Size: Diameter - 9". Symbol of Victory
- Reference: History unknown.





ILLUSTRATION 412

- Title: Meat Platter
- Date: Late 18th century
- Description: As contrasted with the fish platter in Illustration 407, this platter is for meat and is depressed at one end for the gravy. It is Chinese Export porcelain with Canton blue and white design decoration. The back of the meat platter is shown because it contains intermittent low brackets which accommodate the escape of the heat from the meat, thus, protecting the table finish. Length - 15 1/2".
- Reference: Always used by Mr. Brooks Adams but is a part of the large blue set. The Hague inventory and Estate of John Adams both list this service.



ILLUSTRATION 413

- Title: Serving Bowl
- Date: Late 18th or 19th century
- Description: To the left and right of the platters on the third shelf of the south side of the Middle Pantry are pottery serving bowls decorated with the blue and white transfer print, Willoware design. The mark underneath is in blue and contains an "S" for Staffordshire. Size: Length - 12 1/2", Width - 8", Depth - 3 3/4".
- Reference: Listed in the 1911 inventory.

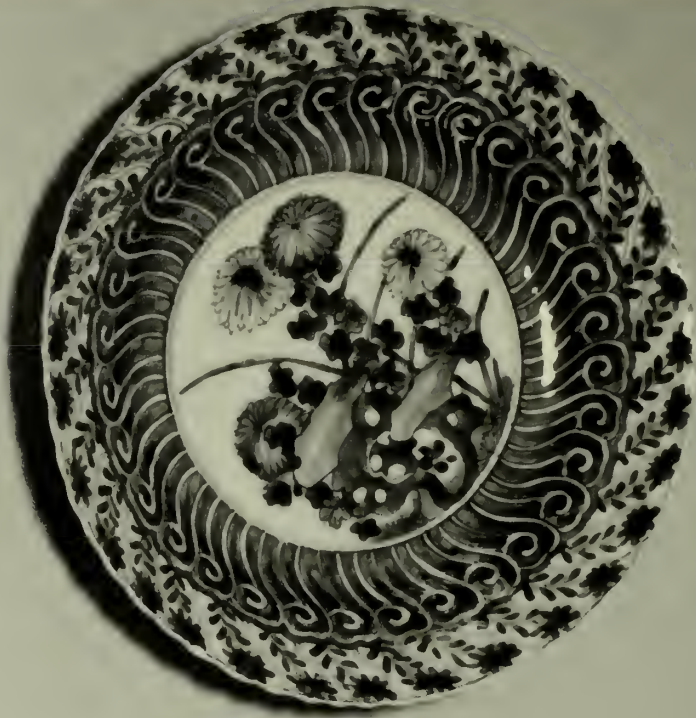


ILLUSTRATION 414

- Title: Soup Plate
- Date: Late 18th or early 19th century
- Description: On the top shelf of the general view of this Middle Pantry is more of the Chinese porcelain not intended for export. This plate has a scalloped edge. The decoration is oblique blue and white floral panels in the outer border and extended scrolls in the inner border. There is a central floral medallion. Mark: underglaze blue - signifies one of the Pa pao (the Eight Precious Things), part of a group of artistic devices called the Po ku (Hundred Antiques).
- Size: Diameter 8 1/4".
- Reference: History unknown.



ILLUSTRATION 415

- Title: Finger Bowls
- Date: Unknown
- Description: Between each one of the Chinese porcelain plates are Waterford Glass Finger Bowls. They are magnificently cut, and the glass is very clear and sparkling. No definitive study has been made of the glassware at the Adams National Historic Site. Size: Height - 4 1/2".
- Reference: These finger bowls were used during the Brooks Adams regime, and he attributed them to his mother, Mrs. Charles Francis Adams.
- Comment: They were used when the First Lady, Mrs. Lyndon B. Johnson, had luncheon in the Old House on June 9, 1967.



ILLUSTRATION 416GENERAL VIEW OF THE WEST SIDE OF THE MIDDLE PANTRY

Since most of the pieces of porcelain will have separate illustration in the following pages, this view is included to show the reader the general effect.

The top shelf contains glass finger bowls and wine glasses brought into the Old House by Mrs. Charles Francis Adams and used by her family and later by Brooks Adams when he occupied the house.



ILLUSTRATION 417

- Title: Cup and Saucer
- Date: Mid 19th century
- Description: On the bottom shelf of the west view of the Middle Pantry are four cups and four saucers of Chinese Export porcelain. Both saucers and cups have overglaze, polychrome decoration of bright blue field, lavender and red flowers. The decoration is completed with red, black and yellow butterflies. The mark underneath is red, overglaze - Chinese characters.
- Size of Saucers: Diameter - 4 1/2".
- Size of Cups: Height - 2 7/8", Diameter - 2 1/4".
- Reference: Family tradition attributes these coffee cups and saucers to Mrs. Charles Francis Adams. They were used during the Brooks Adams Era.



ILLUSTRATION 418

Title: Glass Bon Bon Dish
Date: c. 1782
Description: Part of the Waterford glass collected by Abigail
Adams.



ILLUSTRATION 419

- Title: Plate
- Date: Early 19th century
- Description: On the bottom shelf are four Chinese Export porcelain plates. These plates have a central decoration of two writhing dragons in combat, one red and the other green. The border pattern is a quadrant design of four blue edged frames on gilt field with four red medallions flanked by spread-winged birds. The back of the plate shows no mark. Diameter - 9 1/2".
- Reference: These plates evidently belonged to Brooks Adams. A descendant used six plates of this pattern recently (1968) at a luncheon the writer attended. The descendant remarked that her plates were a part of the Brooks Adams, Boston House china - since Old House things were always kept in Quincy, it seems in character with Mr. Brooks Adams to share interesting porcelain with the house he loved so dearly.



ILLUSTRATION 420

Title: Waterford Glass Bowl

Date: Unknown

Description: On the bottom shelf in front of the dragon plate is a perfectly plain octagonal Waterford glass bowl. The mate to this bowl is on the second shelf on the north side of the Middle Pantry. One of these bowls is chipped. Size: Length - 8 1/4", Width - 6 1/2".

Reference: These bowls were used by the four generations of Adamases who occupied the Old House.

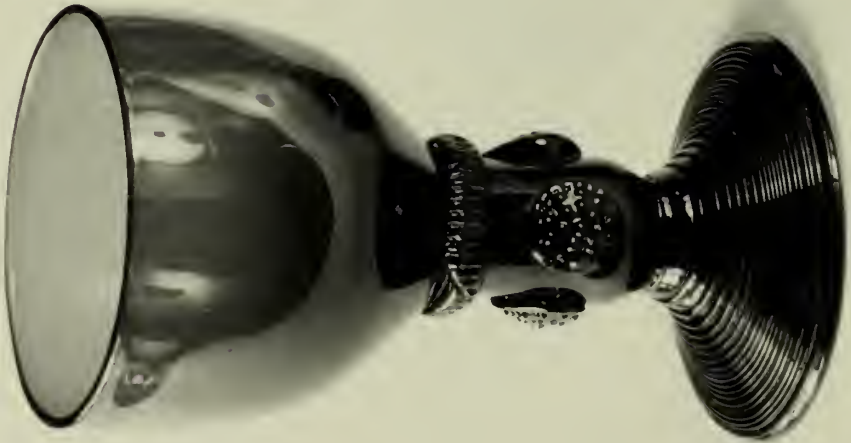


ILLUSTRATION 421

Title: Wine Glasses

Date: Unknown

Description: These wine glasses are green and have a plain bowl. At the top of the stem is a raised panel of vertical lines, and below the stem are three medallions of raised beading. At the bottom of the glass is a ridged circle.

Size: Height - 4 1/2", Diameter - 2 1/2".

Reference: Belonged to Mrs. Charles Francis Adams.



ILLUSTRATION 422

- Title: Plate
- Date: Late 18th century
- Description: A central large rose, a bamboo inner border with four smaller roses and an outer border of gilt spear heads form the decoration of this Chinese Export porcelain plate. Diameter - 9".
- Reference: These plates are attributed to Abigail Adams. Only eight plates remain.
- Comment: They were used on June 9, 1967 when the First Lady, Mrs. Lyndon B. Johnson had luncheon at the Old House.



ILLUSTRATION 423

- Title: Tea Set
- Date: Late 18th century
- Description: This large tea set is Chinese Export porcelain. The tea pot is drum-shaped. The handles are crossed strap, and the finial is a strawberry. The cup is without handle. The sugar bowl has the crossed strap handles like the tea pot. The plate is deep like a shallow bowl. The entire set is decorated with a drooped-winged eagle, sunburst in sepia and gilt. The monogram J. A. is on the eagle's shield of each piece.
- Reference: Undoubtedly made for John Adams.



ILLUSTRATION 424

THIS ILLUSTRATION IS AN ENLARGED VIEW OF A CUP TO THE TEA SET DESCRIBED IN THE PREVIOUS ILLUSTRATION SHOWING THE DETAIL OF THE DECORATION.



ILLUSTRATION 425

- Title: Plate
- Date: Late 18th century
- Description: A central floral design and two narrow borders at the plate edge and at the depression adorn these Chinese Export porcelain plates. The blue and white underglaze decoration is impressive in it's simplicity. Diameter - 9".
- Reference: Family tradition has always attributed all Chinese Export porcelain at the Old House to Abigail Adams. No research so far has negated that tradition.

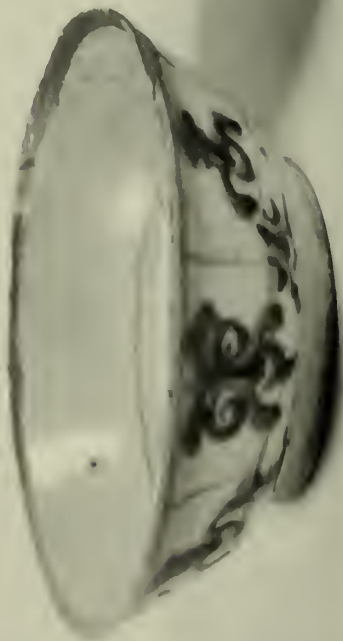
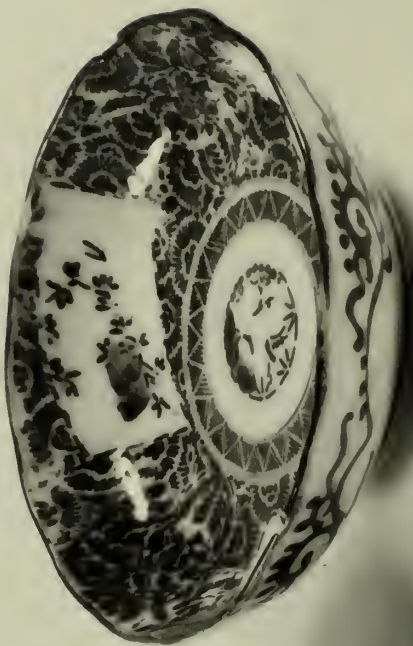


ILLUSTRATION 426

Title:

Blue Bowls

Date:

Late 18th century

Description:

The general view of the third shelf shows two bowls that stand in front of the floral plates. These bowls have blue and white decoration. The bowl at the right of this illustration has three medallions around the inside and a center medallion of stylized floral pattern. It is chipped. Size: Height - $1 \frac{3}{4}$ ", Diameter - $5 \frac{1}{2}$ ".

The bowl on the left of this illustration has a plain interior except for two blue lines around the bottom. In the center of the inside is a geometric square made of blue lines. It has a blue irregular line around the edge of the bowl inside. The outside has a stylized floral pattern. This bowl also is chipped. Size: Height - $1 \frac{3}{4}$ ", Diameter - $5 \frac{3}{4}$ ".

Comment:

History unknown.



ILLUSTRATION 427

Title: Cruets and Stand

Date: Unknown

Description: These glass Cruets were either manufactured in England or Ireland. The stand is wooden. Size: Height without stopper - 8", with stopper - 9 1/4".

Reference: Nothing definitive can be stated about this cruet stand and cruets. It has been attributed to Abigail Adams. Perhaps future research will reveal accurate information.



ILLUSTRATION 428TOP SHELF WEST VIEW OF MIDDLE PANTRY

The glass mug on the right of this illustration is smaller at the bottom and has a panel side. Not seen in the general view, but shown on the left side of this illustration is another glass mug. It is cut with panels going from top to bottom. Both of the mugs are of very clear glass. Size of Mug: Height - 2 1/2", Diameter - 2 1/2". Straight Mug: Height - 3 1/4", Diameter - 2 1/2".

In the center are two very beautiful wine goblets. They are etched with a floral swag design and bird with out-stretched wings. Size: Height - 2 1/2", Diameter - 2 1/2".

This glassware belonged to Mrs. Charles Francis Adams. Mrs. Adams had a large set of these wine glasses.



ILLUSTRATION 429

- Title: Compotier
- Date: Early 19th century
- Description: The porcelain compotier shown on the opposite page is English porcelain, is white and has gilt trim. The top edge is scalloped. The decoration is clear cut but elaborate. There is a floral salmon and gilt border around the top. The bowl is pierced, giving it a paneled effect. The handles are masque heads. The shaft of the bowl is decorated with a vine relief design growing almost diagonally up to the bowl. The base is decorated with gilt bands of various widths. Diameter - 12 1/2".
- Reference: The collection at the Adams National Historic Site contains two smaller compotiers of exactly the same design. They are on the second and third shelves. All were used at the embassy in London by Ambassador and Mrs. Charles Francis Adams.

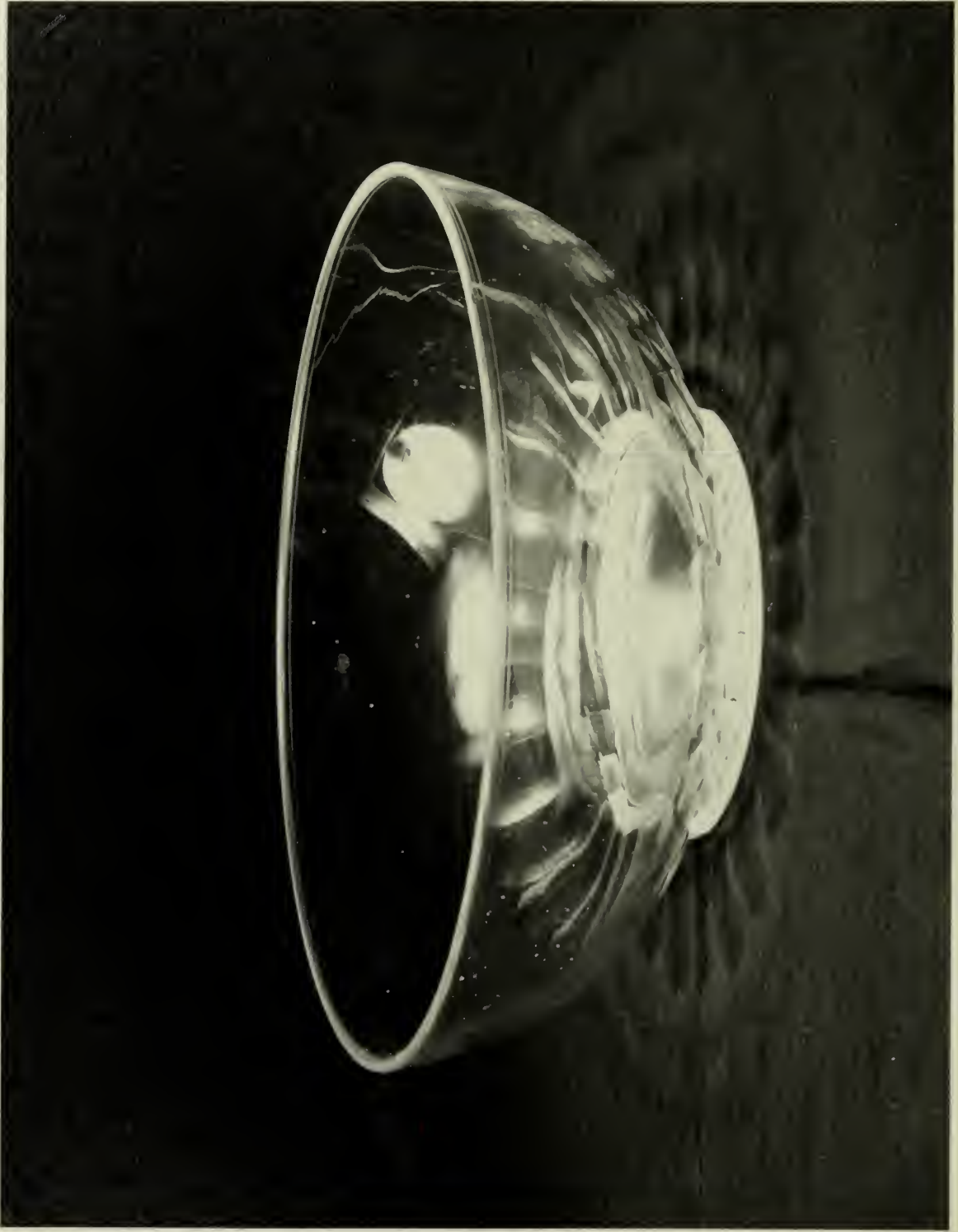


ILLUSTRATION 430

- Title:** Glass Bowl
- Date:** Early 19th century
- Description:** This clear cut panel Waterford glass bowl is of fine quality. Size: Height - 3 1/2", Diameter - 9".
- Reference:** This bowl was used by Brooks Adams for fresh fruit at the breakfast meal. He disclaimed adding any glassware to the Old House. He said his mother had a special taste for fine glassware and indulged herself whenever she wished.



ILLUSTRATION 431GENERAL VIEW OF NORTHWEST SIDE OF MIDDLE PANTRYLOWER SHELF

- Title: Pot-au-creme
- Date: 1840
- Description: The two-tier stand with covered cups is English Coalport China. The porcelain is white, and the decoration is gilt stripes on either side of a green band.
- Reference: This is a part of the large set bought by Mrs. Charles Francis Adams in London to use at the embassy with the gilt Dessert Service described in the kitchen pan closet.

SECOND SHELF

- Title: Bowl and two Cups
- Date: Late 19th century
- Description: This little group of English porcelain dishes on the second shelf has an acanthus leaf decoration with floral swags outside and a broad gilt border inside. The background near the rim is dotted. The mark underneath is: Underglaze scratch - ////
- Reference: Both the date of the porcelain and the family tradition indicate it undoubtedly was brought to the Old House by Mrs. Charles Francis Adams.

THIRD SHELF

Items on this shelf will be described separately.



ILLUSTRATION 432

- Title: Oil and Vinegar Cruets
- Date: Late 18th century
- Description: These cruets do not have matching stoppers, but the handles are identical. Mr. Brooks Adams used to say that the handles reminded him of a fish. They appear to be English glass. Height - 3 1/2".
- Reference: Family tradition attributes these cruets to Louisa Catherine Adams. More research is needed on all glassware.



ILLUSTRATION 433

- Title: Porcelain Pitcher
- Date: 1825-1830
- Description: American porcelain is represented by this handsome Tucker Pitcher. The proportions are superb. It is Empire shape with fluted foot. There are polychrome floral bouquets on the body. Gilt lines decorate the handle, the top and the bottom of the pitcher. It is cracked. Size: Height - 7 1/2", Diameter - 4 3/4".
- Comment: Tucker's father ran a china shop in Philadelphia in 1820. He had two sons, William and Thomas Tucker, and they did much decorating of china in their china shop. In 1825 they began to make hard paste porcelain. The Tuckers, it would appear, were not business people, and they were plagued with financial reverses. In 1832 it was necessary for them to take in Joseph Hemphill as a financial backer. Even with his help their business ended in 1838.
- Reference: This pitcher was probably brought into the Old House by Mrs. Charles Francis Adams.



ILLUSTRATION 434GENERAL VIEW OF THE NORTH WALL OF THE MIDDLE PANTRY

On the first shelf of this illustration there is German porcelain. On the second shelf there is French porcelain. Against the wall on the first shelf are four plates which are normally referred to as Meissen China because of the marking on the back which is so similar to the cross swords. The border, however, gives it a French appearance. These plates are described in detail in Illustration 387. On the third shelf is English glassware and porcelain. Individual illustrations will give a more detailed description.

- Title: Cup and Saucer
- Date: Late 1840 (Probably)
- Description: On the second shelf, the third cup and saucer from the left is of white porcelain with the Greek key border in gilt and red. Mark Underglaze green COPELAND. Diameter - 5 1/2".
- Reference: This cup and saucer was probably made in the late 1840's when the firm was Copeland late Spode, then W. T. Copeland & Son.



ILLUSTRATION 435

Title: Cups and Saucers

Date: Late 18th century

Description: On the first shelf are Dresden cups and saucers. The decoration is a very delicate floral design. One cup and saucer is oval and the other is heart-shaped. It is not shown in the general view, Illustration 434.

Size of Oval Cup: Height - 1 1/2", Diameter - 2 1/2".

Size of Oval Saucer: Diameter - 4 1/2".

Size of Heart-shaped Cup: Height - 4 1/2", Diameter - 2 1/2".

Size of Heart-shaped Saucer: Diameter - 5".

Reference: These cups and saucers are said to have been a part of Henry Adams' collection. They were inherited from him by Elizabeth O. Adams who gave them to the Old House during the Adams Memorial Society Era.



ILLUSTRATION 436





- Title: Cups and Saucers
- Date: 18th century
- Description: On the first shelf are six cups and saucers, each decorated with different floral bouquets. The edges are slightly scalloped. These handsome Meissen cups and saucers have an underglaze blue mark:  On only one set are there double scratches over the glaze denoting an imperfection. There is not a chip in the entire set (1968).
- Reference: In his Letters on Silesia John Quincy Adams mentioned that he and Mrs. Adams visited Meissen which he spoke of as the great manufacturing center of Saxon porcelain. On February 18, 1810 John Quincy Adams recorded in his financial ledger that he bought a large amount of Meissen. This china was used by Brooks Adams.



ILLUSTRATION 437

Title: Cup, Saucer and Pitcher

Date: 1770-1800

Description: Each piece of this Zurich chinaware is very slightly fluted. The pitcher is pear-shaped, has an underglaze blue in quadrants with fine floral, berry and branch design. The mark under the cup is ID underglaze blue . The saucer is underglaze blue  for Zurich, Switzerland where it was made. The pitcher is incised III underglaze blue .

Reference: On the way to Geneva in 1872 Mrs. Charles Francis Adams bought this tea service. China experts agree that it is not only rare but superb in quality.



ILLUSTRATION 438


- Title:** Teapot
- Date:** 1770-1775
- Description:** On the first shelf in front of the center plate is a porcelain teapot. It is inverted pear-shape with a rosebud finial and branch handle. The spout has a silver cover with incised decoration on top of a clown's head. There are raised fluted rays from the top end at the curve of the body of the teapot and the lower area is enclosed with rococo feathers forming a cartouche for four overglaze initials in floral forms: J C M V. There are additional floral bouquets on the body. Mark: faint, underglaze  Probably the mark of King's Porcelain Manufactory (KPM), Berlin. (The sceptre mark, such as this, has several variations.) It is cracked. Height - 3 3/4".
- Reference:** Family tradition attributes this teapot to Louisa Catherine Adams. It seems likely since she appeared to collect German china, while Abigail Adams preferred Chinese Export. John Quincy Adams' Diary also records the purchase of German china.



ILLUSTRATION 439

Title: Glass Goblet

Date: Unknown

Description: On the first shelf in the right hand corner of the general view, Illustration 434, is a beautiful crystal goblet with red rim and etched decorations of German scenes on the surface. The base of the goblet is serrated into six sections which fan into three parts for each section. The stem is beautifully cut in the shape of a ball with hexagonal sides. The photograph shows the detail of each of the three cartouches. Height - 7 1/4".

Reference: History unknown.

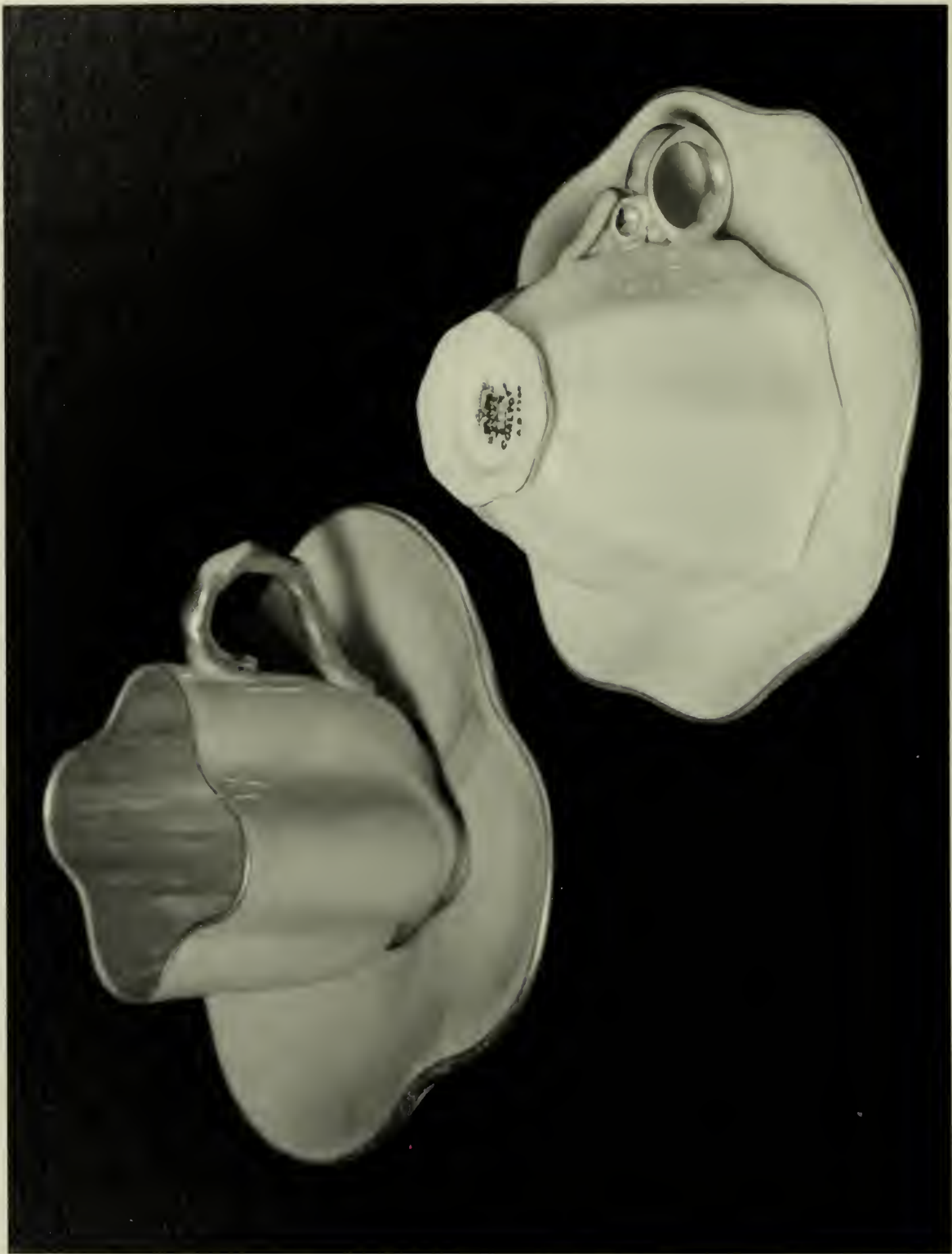


ILLUSTRATION 440

- Title:** Cup and Saucer
- Date:** Late 18th century
- Description:** On the second shelf are six Coalport demitasse cups and saucers of soft paste porcelain. This illustration shows one of the cups and saucers in the shape of a four-leaf clover. It has a blue twisted handle. Mark: both cup and saucer are stamped in green underglaze with royal crown seal and COALPORT, A.D. 1758. They all have a gold lining but are different colors on the outside - yellow, ivory, pink, bright yellow, maroon, blue.
- Size of Cups:** Diameter - 2", Height - 1 1/2".
- Size of Saucers:** Diameter - 3 1/2".
- Reference:** These cups and saucers were collected by Mrs. Brooks Adams.



ILLUSTRATION 441

- Title:** Cup and Saucer
- Date:** Late 18th century
- Description:** On the second shelf is a cup and saucer. The cup is decorated with a pencil polychrome scene of three women reading, talking and winding flax. Mark: Underglaze blue - ~~f~~. The decoration on the saucer is a central message on green base: Qu'elles veillent sur Votre Sort. Both the cup and saucer have purple and gilt trim. This mark is probably the mark of King's Porcelain Manufactory (KPM), Berlin. (The sceptre mark, such as this, has several variations.) It is not unusual that the saucer should bear a French motto. The KPM pieces often printed foreign words or sayings. Size of Cup: Height - 2 1/4", Diameter - 2 1/2".
- Size of Saucer:** Diameter - 5 1/2".
- Reference:** Part of Henry Adams' collection.



ILLUSTRATION 442

Title: Cup and Saucer

Date: Early 19th century

Description: On the second shelf is a white cup and saucer made of porcelain with wide gold bands on the rims and base. In between there is a decoration of narrow gold lines. The gilt handle is in the form of a serpent's head ending in an acanthus leaf on the body.

Size of Cup: Height - 2 1/2", Diameter - 3 3/4".

Size of Saucer: Diameter - 5 1/2".

Reference: These cups and saucers are listed in the 1911 inventory.

Comment: These were used on special occasions by Brooks Adams. He associated them with his parents while they were in London from 1862 to 1868.

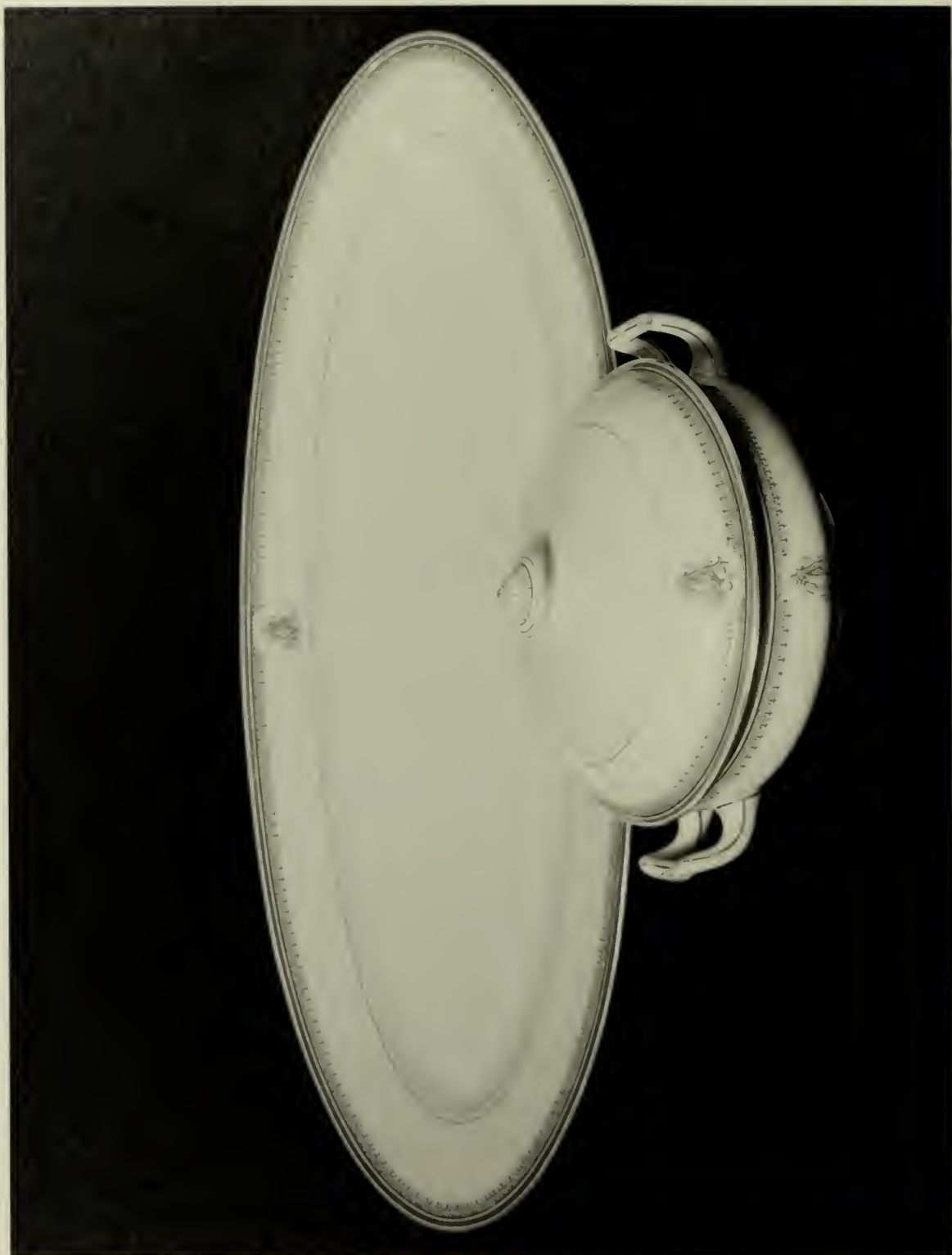


ILLUSTRATION 443

Title: Fish Platter

Date: 1867

Description: This long narrow platter is one used for baked fish, such as a salmon. It has a black and gilt border. The monogram CFA is in gilt, and the letters are Gothic style. Overglaze print in red - C. H. Pillivuyt & Cie

Paris

Exp. 1867

Madaille d'Or

Underglaze, scratched - 43 25

Size: Length - 28", Diameter - 9 3/4".

Reference:

When Charles Francis Adams went to Geneva, Switzerland to serve on the Arbitration Commission regarding the Alabama Claims, he instructed his son Brooks Adams to stop in Paris and purchase a dinner service and a dessert service for the Adams family to use in their entertaining while in Geneva. Both the dinner service and dessert service had been awarded the Gold Medallion in the Exposition of 1867. For this reason, it seemed natural that Brooks Adams would be attracted to this set. There are many pieces stored; some are badly chipped from careless handling over the years.

Title: Serving Dish

Date: 1867

ILLUSTRATION 443 (Continued)

- Description: This porcelain serving dish and cover has double handles and has a red, black and gilt border. The Monogram is the same as on the platter and also the mark with the exception of the underglaze, scratched 10/.
- Reference: This porcelain belonged to Charles Francis Adams and was purchased in 1872. It is listed in the 1911 inventory.

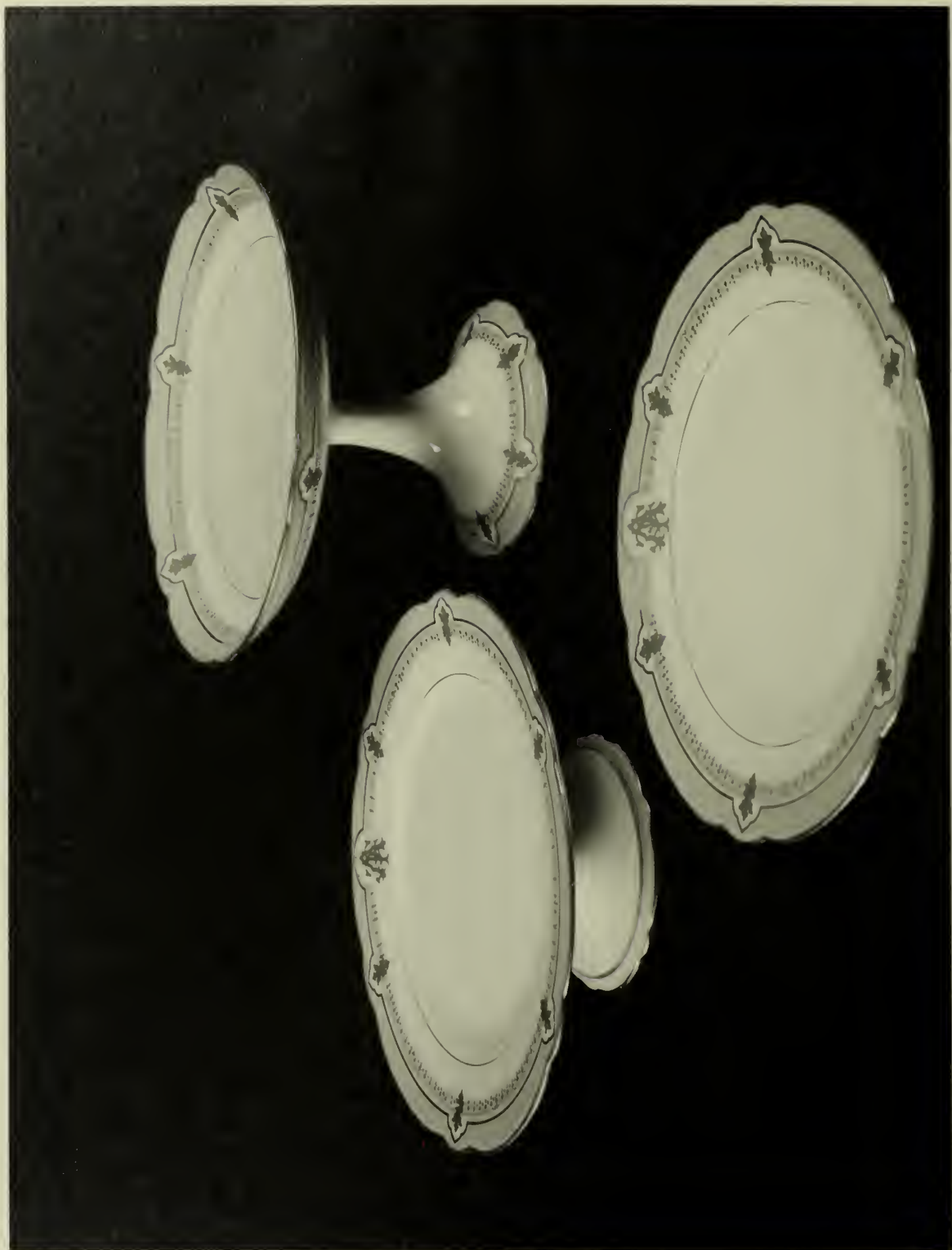


ILLUSTRATION 444

- Title:** Low Cake Stand, Compote and Plate
- Date:** 1867
- Description:** These porcelain pieces are all decorated with gilt and salmon borders and the edges of the cartouches are red with a center of blue. The plate and low cake stand are visible in the general view, Illustration 434, on the second shelf. The Monogram, CFA, is in gilt Gothic letters. Mark on plate: overglaze print, red - C. H. Pillivuyt & Cie, Paris, Exp. 1867 Medaille d'Or. Mark on plate underglaze, scratched - 8.
- Size of Compote:** Height - 5 1/2", Diameter - 9".
- Size of Low Cake Stand:** Height - 3", Diameter - 9".
- Size of Plate:** Diameter - 9".
- Reference:** Part of the dessert service listed in the 1911 inventory belonging to Charles Francis Adams.



ILLUSTRATION 445

Title: Cup and Saucer

Date: Late 18th or early 19th century

Description: On the third shelf is a very beautiful cup and saucer of Coalport china. The decoration of the cartouche of flowers is in sharp contrast to the rich green background. Height of Cup - 3".

Reference: Part of Henry Adams' collection.

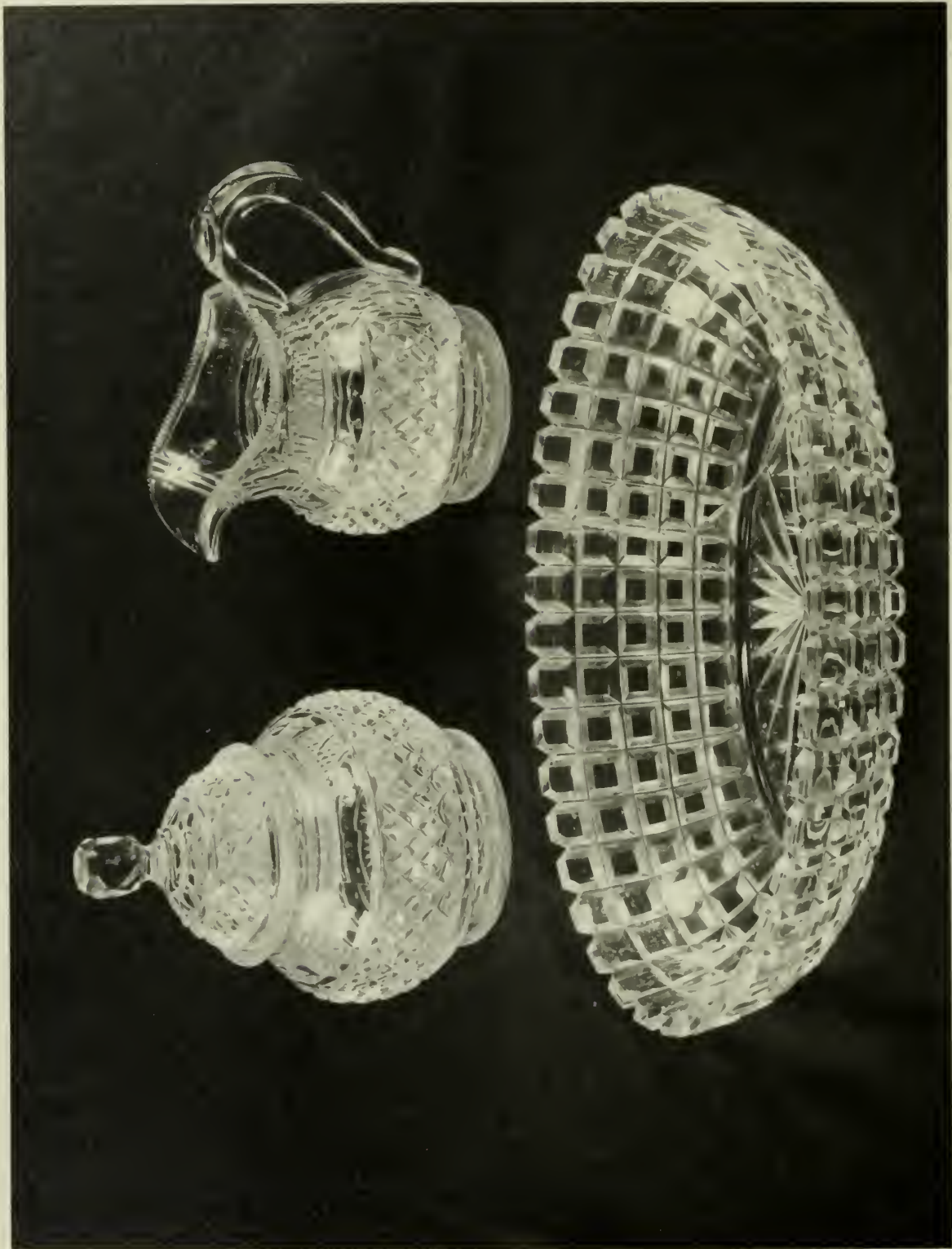


ILLUSTRATION 446GLASSWARE

On the third shelf of the general view of the north side of the Middle Pantry are three pieces of very beautiful English cut glass. The three pieces consist of a sugar bowl and cover, a pitcher and an oval bowl.

Size of Sugar Bowl: Height - 4 1/2".

Size of Pitcher: Height - 5 1/2".

Size of Oval Bowl: Height - 2 3/4", Width - 7", Length - 11".

These pieces are included because of their beauty - more study will be needed to record correct information.



ILLUSTRATION 447

Title: Finger Bowls

Date: 1800

Description: These finger bowls with inserts are dark blue glass with white rims.
Size of outside bowl: Height - 3 1/4", Diameter - 4 1/2"
Size of insert: Height - 3", Diameter - 2 1/2".

Reference: John Quincy Adams mentioned buying finger bowls while he was in Russia.

Comment: The outside of the bowl was used for the washing of the fingers and the insert was used to spit in after rinsing the mouth at the close of the meal. One of these bowls is displayed in the Pan Closet and one on the third shelf of the north wall of the Middle Pantry.



ILLUSTRATION 448

Title: Plate

Date: Early 19th century

Description: Not shown in the general view but on the third shelf of the north side of the Middle Pantry are two floral plates. They are pure white and have a blue cabbage rose decoration underglaze and a semi-crackle finish. They are Royal Worcester. Marking vague underglaze blue mark, indecipherable. Diameter - 9".

Reference: Probably bought by Mrs. Charles Francis Adams.



ILLUSTRATION 449

- Title: Platter
- Date: Early 19th century
- Description: These pottery serving platters are blue and white transfer print of a Gothic English church scene. Around the edge is a wide border consisting of branches and leaves. Mark Underglaze blue:
- Beehive with flowers and leaves
above it - BLENHEIM
below it - FLORENTINE CHINA 2
- Length - 18".
- Reference: It is listed in the 1911 inventory as "1 large Blue and White Staffordshire Platter with Landscape." Probably belonged to Mrs. John Quincy Adams who lived in England while her husband served as Minister to the Court of St. James - 1815 to 1817.

HISTORICAL ASSOCIATION WITH THE BUTLER'S PANTRY

Leaving the Middle Pantry and turning to the left one enters a long passageway used as the Butler's Pantry. The wallpaper is a blue floral design upon a white background. This paper (1968) was silk screened so as to be an exact reproduction of the paper used during the Brooks Adams occupancy, 1890 to 1927. The woodwork is an off white or light cream.

Just when this passageway was added was not clearly established by Architect Wrenn in 1964. Brooks Adams thought Abigail Adams had connected the East Wing to the kitchen by adding the first floor passageway in 1800. In a letter to Abigail Adams dated April 28, 1800 her sister Mary Cranch wrote:

"You have no way to get from your new room to the Kitchin but by going out of the back entry door or thro your other rooms. I see but one way you can have it - you may have an small entry from where your window next to your Kitchin Dresser is to the new entry. it would darken the back window in your north room but you might have another in this little entry & opposite to it which would admit the light from the yard. ..."

Abigail Adams replied from Philadelphia on May 5, 1800:

"...I should like much to have a passage to the Kitchin from the entry: ...I care very little about the North window,... but as you observe a window may be made opposite."

It is of further interest to notice that the first floor passageway has a window opposite the dining room window (now a door), and the lights of that window in the passageway are twelve over twelve. In the second floor passageway which was added by John Quincy Adams in 1836, the lights are six over six.



ILLUSTRATION 450

GENERAL VIEW OF THE BUTLER'S PANTRY

Charles Francis Adams brought running water into the house and probably installed the soapstone sink at that time.

On the north wall (not seen in the illustration) is a map of Quincy with the notation: "From Norton by B. Whitefield 1877."

On the south wall to the left of the sink is an oil painting of the Old House done by Frankenstein in 1849. On April 14, 1851 Charles Francis Adams entered in his financial ledger a payment made to Mr. Frankenstein for his pictures and frames - \$135.00. A letter from Charles Francis Adams, Jr. written 14 July, 1903 and an added explanation by his son Henry March 13, 1936 are quoted here:

"This, and the companion pictures of the two, Adams houses at Penn's Hill, were painted by G. N. Frankenstein, an American artist, who worked about 1850. The small figure¹ in the foreground of this picture is that of Mrs. H. P. Quincy, then not yet four years old. The dog was a pet terrier, named Manche.

(1) Mary Adams, daughter of Charles Francis Adams.

ILLUSTRATION 450 (Continued)

A letter relating to these pictures is contained in Letter-book of C. F. A. dated 1 August 1850 in answer to one from Mr. Frankenstein of July 17, previous.

Also a letter of April 14, 1851, in answer to letter of March 5th and April 14th of same year.

The two pictures always hung over the door in my father's library, 57 Mt. Vernon St., Boston. After his death, and the death of my mother, I took them, for association's sake.

C. F. Adams

Lincoln 14, July, 1903."

"When my father's study in Lincoln was dismantled in October 1935 I took these pictures with the family's consent for their associations, and brought them to the office on Oct 13 1935 Sunday.²

Henry Adams

March 13, 1936
Boston."

Other objects will be described in separate illustrations.

(2) Henry Adams brought these paintings to Quincy a few days previous to his death in 1951.



ILLUSTRATION 451TOP OF SINK TABLE

To the immediate left stands the Sheffield silver tray. From 1920 to 1927 knives for each meal were left in this tray. Extra silver was locked in the closet drawer. Knives were kept on one side and forks and spoons on the other. Size: Length - 12 1/2", Width - 7 1/2", Height - 5".

Title: Cake Server

Date: 1750-1800

Description: The pierced, lattice-bordered, scalloped edge, two-tier cake server has a decoration of medallions; two have floral designs, and one has a British lion with Peter's key. On the lower tier is the initial A. The colors are cobalt blue and white. Height - 12".


Reference: When Charles Francis Adams 3d died in 1956, his sister Mrs. Robert Homans brought several pieces of this Meissen Dessert Service to the Old House. She said that it was family porcelain which Charles Francis Adams 3d had inherited upon the occasion of his marriage. Since it was family porcelain, Mrs. Homans suggested it must be in the Old House. Whether Mrs. Charles Francis Adams, wife of the Civil War Ambassador to Great Britain, or Mrs. John Quincy Adams bought his porcelain cannot be determined at this time. With the date of 1750 to 1800 it could have been purchased by Mrs. John Quincy Adams while she and her husband were in Prussia - 1797 to 1801; thus, the monogram could have been applied at the factory.

ILLUSTRATION 451 (Continued)

Title: Platter (Sevres)

Date: c. 1782

Description: This white porcelain serving platter is decorated with polychrome floral bouquets on the border and in the center. It has overglaze blue and gilt trim.

Mark:  Size: Length - 18 1/2", Width - 14 1/4".

Reference: This platter is on loan from Mrs. Abigail Homans Mason. The service was used by Abigail Adams in the White House in Washington, D. C. Mrs. Mason wanted the Old House to exhibit all types of Abigail Adams' china. She let the area include this piece of White House china in the exhibit also.

To the left of this beautiful porcelain platter is a ceramic tea tile in a wooden stand.
Size: 9 1/2" square.

On the tea tile is a Sheffield silver pitcher with a hinged cover. The hinge of the cover is broken. Height - 12 1/2".

The Bed Tray will be described in a separate illustration. On the Bed Tray is a silver bowl, Monteith. This bowl belonged to John Adams. There is an inscription on the bottom:

E. C. Adams

- from -

Mrs. Dr. Woodward

1869

E A from ECA

1894



ILLUSTRATION 452

Title: Bed Tray

Date: 1815

Description: The walnut bed tray is Sheraton in style. The turnings of the legs are typical of the period of late Sheraton or early Empire. The shaping of the rail and the handgrips are characteristic of the late Sheraton period. It is American.
Size: Length - 24 3/4", Width - 15", Height - 10 1/2".

Reference: According to family tradition, it was used by Mrs. Louisa Catherine Johnson Adams, Mrs. Abigail Brooks Adams, Mrs. Brooks Adams and by Brooks Adams himself during the last year of his life (1926-1927).



ILLUSTRATION 453

Title: Table

Date: 1780-1800

Description: The drop-leaf center of the dining table is Chippendale style with square legs. The wood is mahogany, and the workmanship indicates that it was made in the Boston area. Size: Length - 37 1/2", Width - 18" closed, Height - 29 1/6".

Reference: In the early nineteen twenties the table was kept where it is now (1968). Brooks Adams always maintained it was used in the Paneled Room when that room was used as a Dining Room.



ILLUSTRATION 454

Title: Pitcher and Tray

Date: 1879

Description:

On the mahogany table in front of the window is a sterling silver pitcher and tray richly decorated in raised floral designs and gilded to be appropriate for the Golden Wedding Anniversary. The tray has three claw and ball feet. Both pieces are engraved with the same inscription:

1829

C.F.A. and A.B.A.
from their children

GOLDEN WEDDING

September 3^d

1879

Size of Pitcher: Height - 8 1/4", Diameter from spout to handle at opening - 4".
Size of Tray: Diameter - 10 1/2".

Reference:

The children of Mr. and Mrs. Charles Francis Adams had this pitcher and tray made specially for the Golden Wedding Anniversary for Charles Francis Adams and Abigail Brooks Brown Adams.



ILLUSTRATION 455WEST END VIEW OF THE BUTLER'S PANTRY CHINA CABINET

The general view of this pantry is included to show the exhibit as arranged by Mrs. Louisa Catherine Adams Perkins and Miss Elizabeth Ogden Adams. When the area was given to the people of the United States, the Adams family expressed a desire, although it was not an obligation, that the china should remain exhibited as Mrs. Perkins and Miss Adams had arranged it. Photographs were taken at the time and their wish has been conscientiously carried out. As the china is cleaned, it is put back in the same spot. Most of the items exhibited will be described in separate illustrations.



ILLUSTRATION 456EAST END VIEW OF THE BUTLER'S PANTRY CHINA CABINET

The general view of this pantry is included to show the exhibit as arranged by Mrs. Louisa Catherine Adams Perkins and Miss Elizabeth Ogden Adams. When the area was given to the people of the United States, the Adams family expressed a desire, although it was not an obligation, that the china should remain exhibited as Mrs. Perkins and Miss Adams had arranged it. Photographs were taken at the time and their wish has been conscientiously carried out. As the china is cleaned it is put back in the same spot. Most of the items exhibited will be described in separate illustrations.



ILLUSTRATION 457

Title: Vegetable Dish and Gravy Bowl

Date: 1840

Description: Green and gold band Coalport vegetable dish and gravy bowl are shown separately here to give a more detailed view. Both pieces are octagonal in shape.

Size of Vegetable Dish: Height - 7", Diameter - 10".

Size of Gravy Bowl: Height - 10", Length - 15 1/2".

Reference: These pieces are a part of the large set of one hundred and thirty-six pieces which belonged to Mrs. Charles Francis Adams.



ILLUSTRATION 458

- Title: Wine Glasses
- Date: 19th century
- Description: The simple clear green glass, the well proportioned stems and base make these wine glasses beautiful and decorative for the table. Height - 4 1/4".
- Reference: These wine glasses are said to have been used by President John Quincy Adams. This seems highly logical as Mrs. Charles Francis Adams appears to have preferred etched clear crystal glasses.



ILLUSTRATION 459

- Title:** Soup Plate, Dinner Plate and Platter
- Date:** 18th century
- Description:** In this illustration there are three pieces of Chinese Export porcelain. There is a soup plate, a dinner plate and a large platter. They have a border of flowers around the edge and a bouquet in the center.
- Size of Soup Plate:** Diameter - 9".
- Size of Dinner Plate:** Diameter - 10".
- Size of Platter:** Length - 15".
- Reference:** These Chinese Export porcelain pieces are mentioned in John Adams' Will as "Plates decorated with red flowers."



ILLUSTRATION 460

- Title:** Vegetable Dish and Gravy Boat
- Date:** 18th century
- Description:** The covered vegetable dish of Chinese Export porcelain is decorated with red flowers and is a part of the large set. It is round and has boar's head handles. The finial on the cover is in the shape of a strawberry. The gravy boat is fluted at the top but has the same decoration as the vegetable dish.
- Size of Vegetable Dish:** Height - 4 1/2", Height to top of Cover - 7 1/2", Diameter - 8".
- Size of Gravy Boat:** Length from spout to handle - 7 1/4", Diameter - 3 3/4".
- Reference:** This large set of Chinese Export porcelain belonged to Abigail Adams.

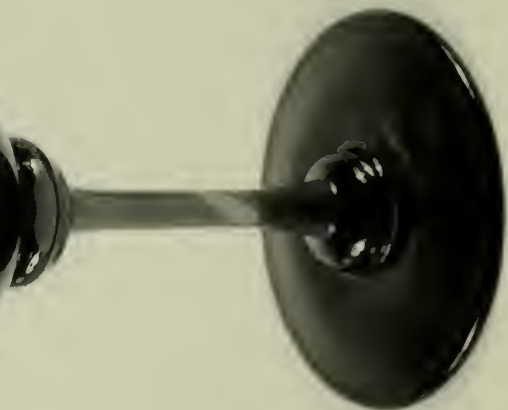
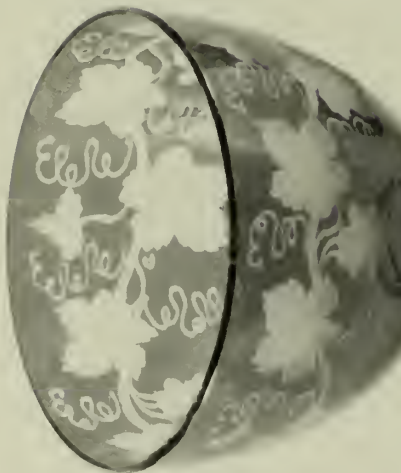


ILLUSTRATION 461

- Title:** Wine Glasses
- Date:** 18th century
- Description:** These red stemmed wine glasses are etched with a grapevine and leaves.
Height - 4 3/4".
- Reference:** Nothing is known about these glasses except it was always the family tradition that they were used by Abigail Adams. Only three of these glasses have survived.

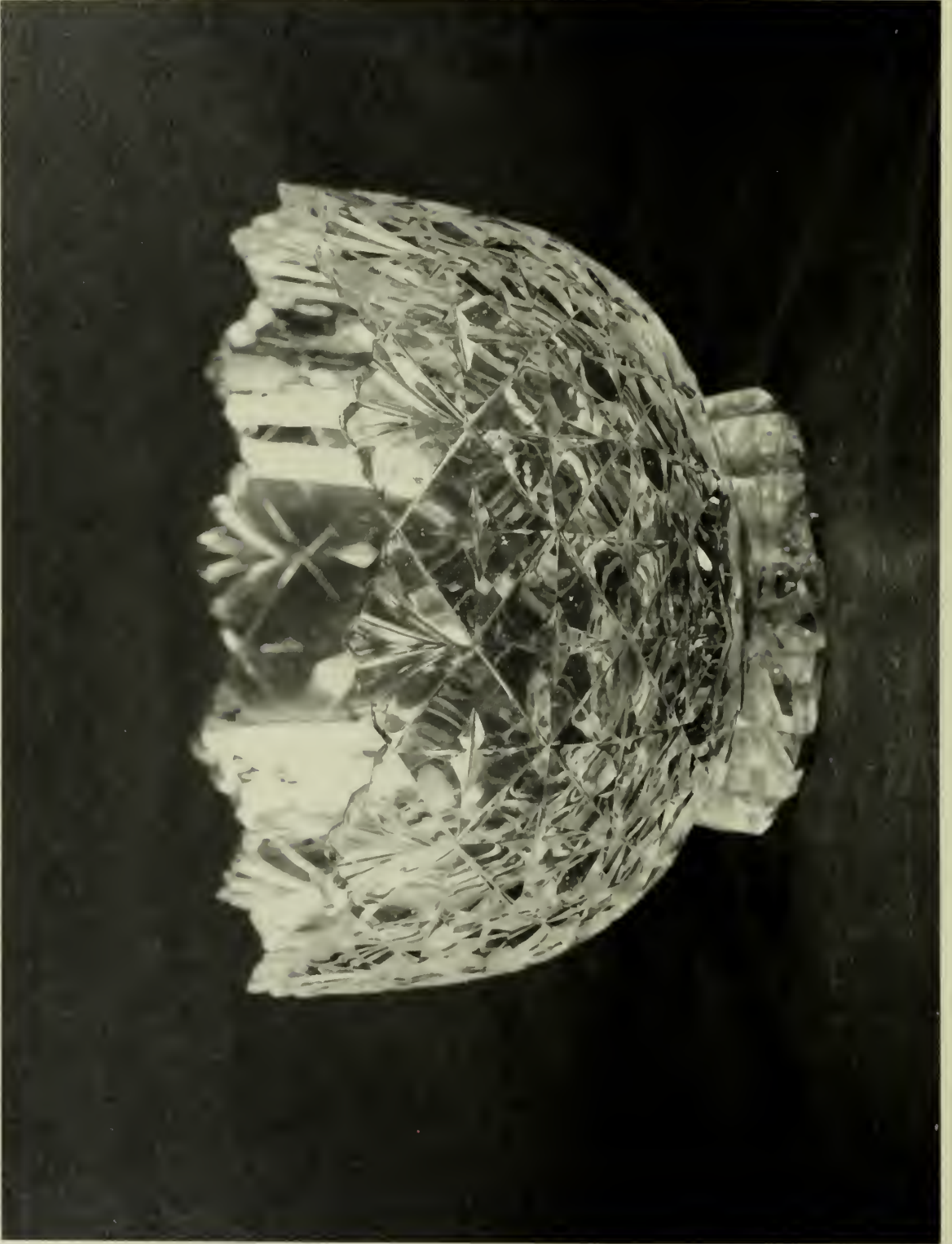


ILLUSTRATION 462

Title: Waterford Glass Bowl

Date: c. 1782

Description: This bowl is round and is of Waterford Glass. The design is in clear cut geometrical lines. It is mended. Diameter - 9".

Reference: The Waterford Glass was Abigail Adams' and goes back to the year the factory started about 1782.



ILLUSTRATION 463

- Title:** Glass Bowl
- Date:** c. 1782
- Description:** This oblong Waterford Glass bowl is interesting because the cutting of the crystal resembles ribbon bows. The edges at the top are fluted and slanted. The bottom of the bowl underneath is carved in a star design. It has been mended. Diameter - 8 1/4".
- Reference:** The family tradition is that President John Quincy Adams sometimes let his nuts sprout in the Waterford Glass bowl so that he could watch the progress through the glass. This accounts for the bowl being cracked. This information is taken from the 1911 inventory.



ILLUSTRATION 464

Title: Covered Bon Bon Dish

Date: c. 1782

Description: The covered Bon Bon Dish is Waterford Glass. There are two of these Bon Bon Dishes displayed in the passageway pantry and one in the middle pantry. Height - 6".

Reference: They belonged to Abigail Adams.



ILLUSTRATION 465LITTLE ETCHED GLASSES

In this illustration are more small etched glasses. The glass on the right is amber in color. The center glass is red. The small glass on the left has an aquamarine bowl with clear pedestal twisted stem. All history of this glass is lost. The amber and red wine glasses are said to have been Abigail Adams'. In this case, ^{these} are the only wine glasses which have survived the years (three red and one amber). Both the red and amber glasses have a grapevine and leaf decoration.

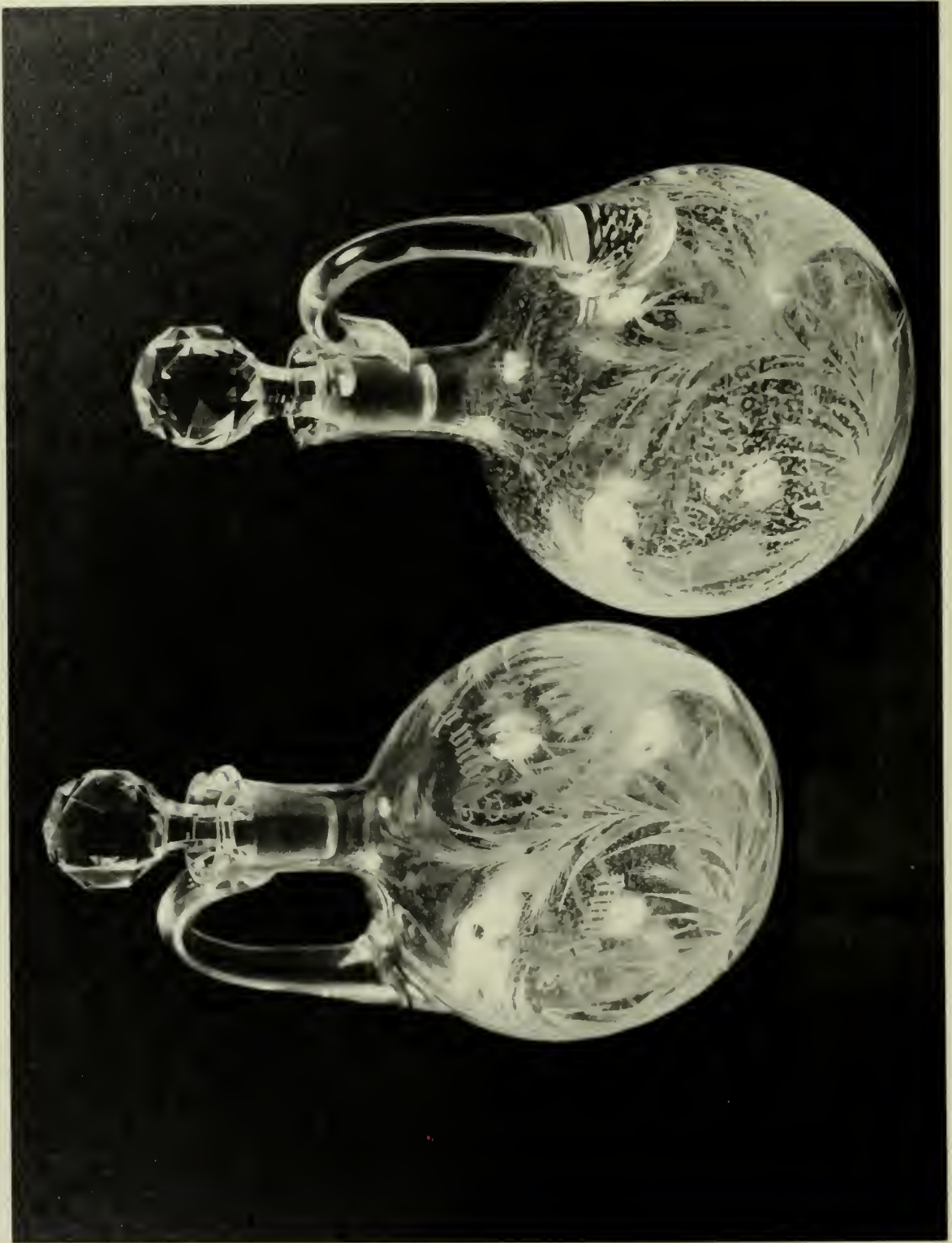


ILLUSTRATION 466

Title: Cruets

Date: 1829 to 1879

Reference: These cruets were a part of Mr. and Mrs. Charles Francis Adams' Golden Wedding Anniversary Celebration. On one is inscribed "Adams" and on the other is the name of "Brooks." They have the date 1829 to 1879 on each.

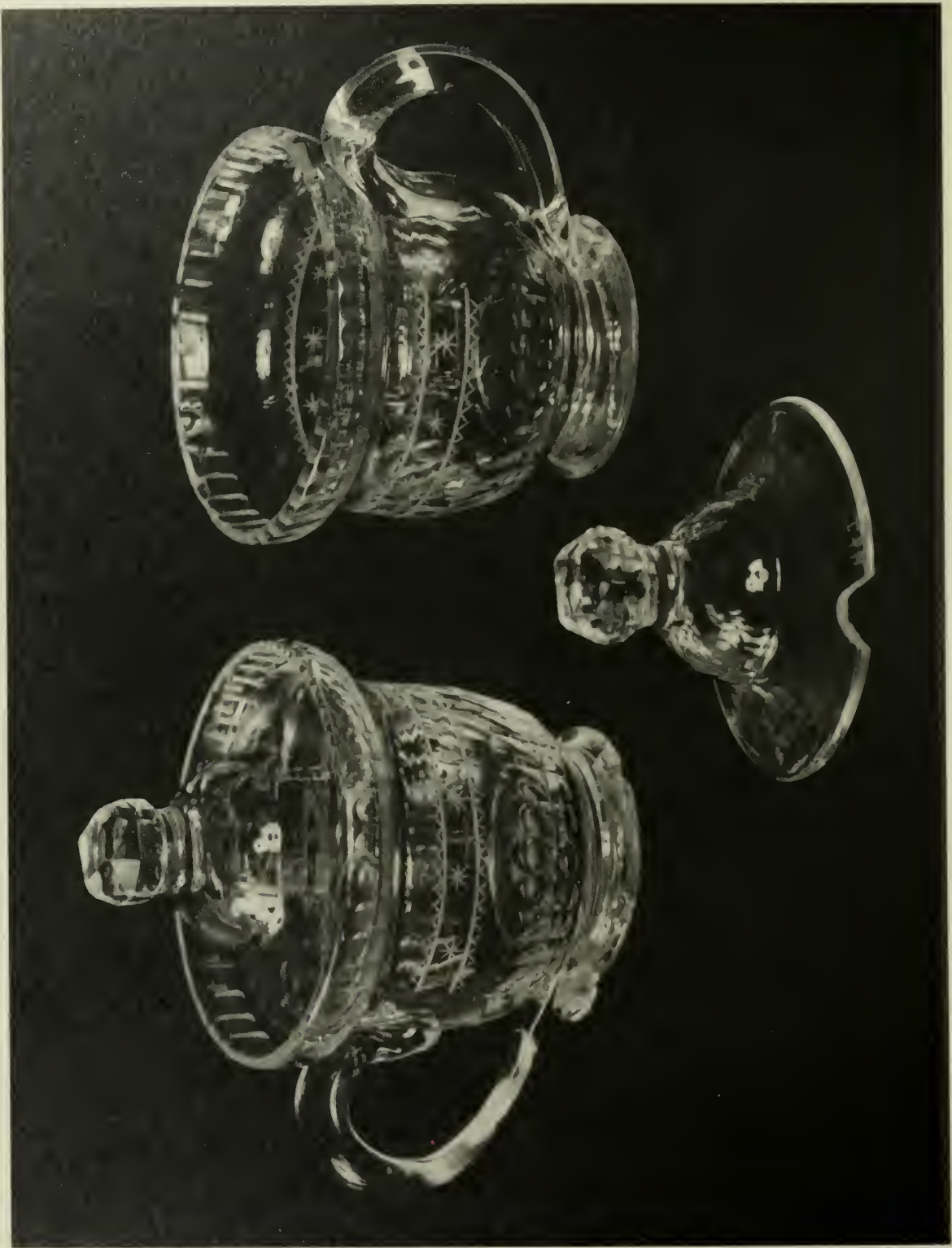


ILLUSTRATION 467

CRYSTAL CUPS

Nothing is known about these handsome crystal cups.

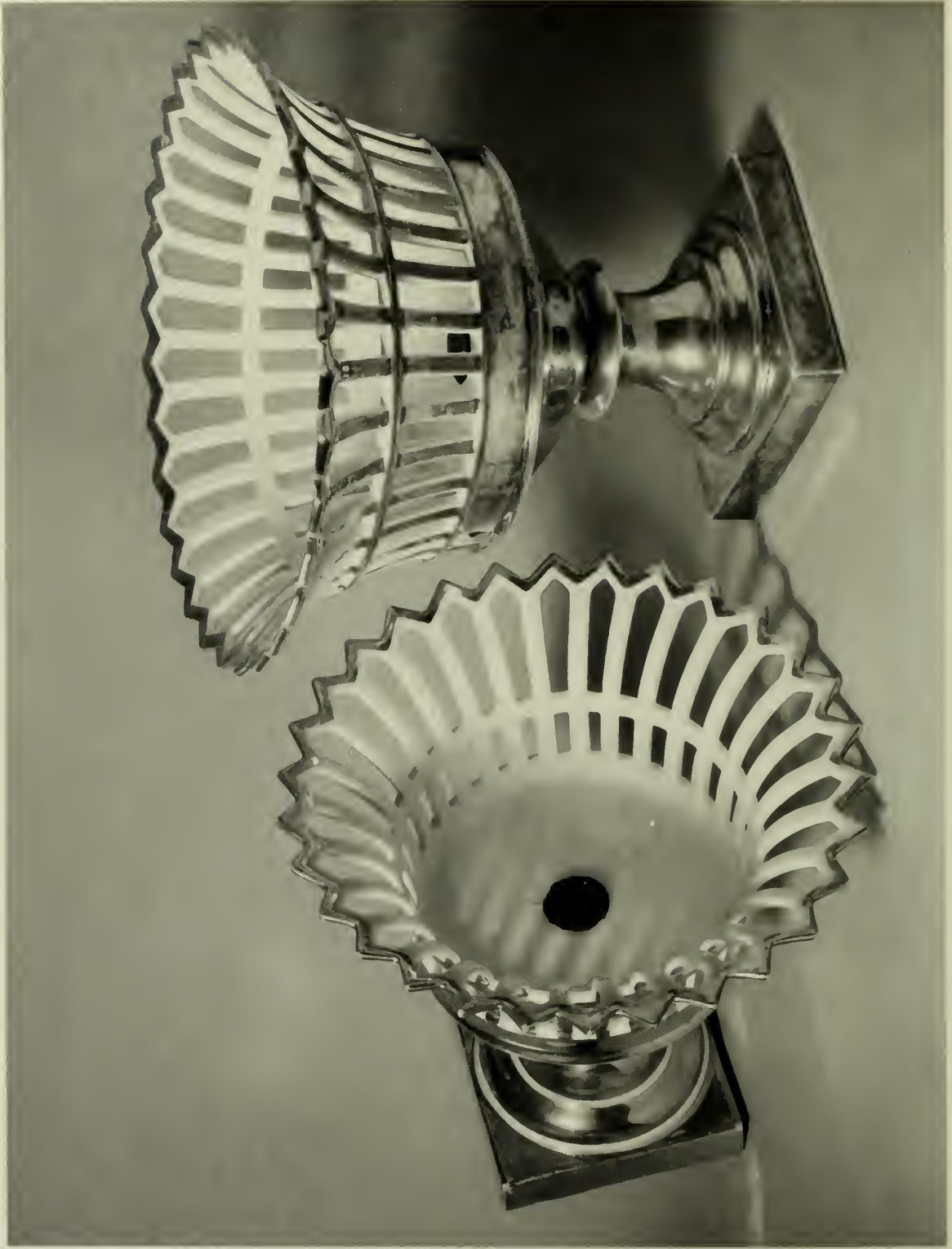


ILLUSTRATION 468

- Title:** Compotiers (French)
- Date:** c. 1840
- Description:** These compotiers are on the top shelf of the cabinet. There are three of them. They are urn-shaped, and the panels are pierced with scallops at the top. The bases are pedestal in style. The interior is white and the exterior is gilt.
- Reference:** These compotiers were used by Mrs. Charles Francis Adams.

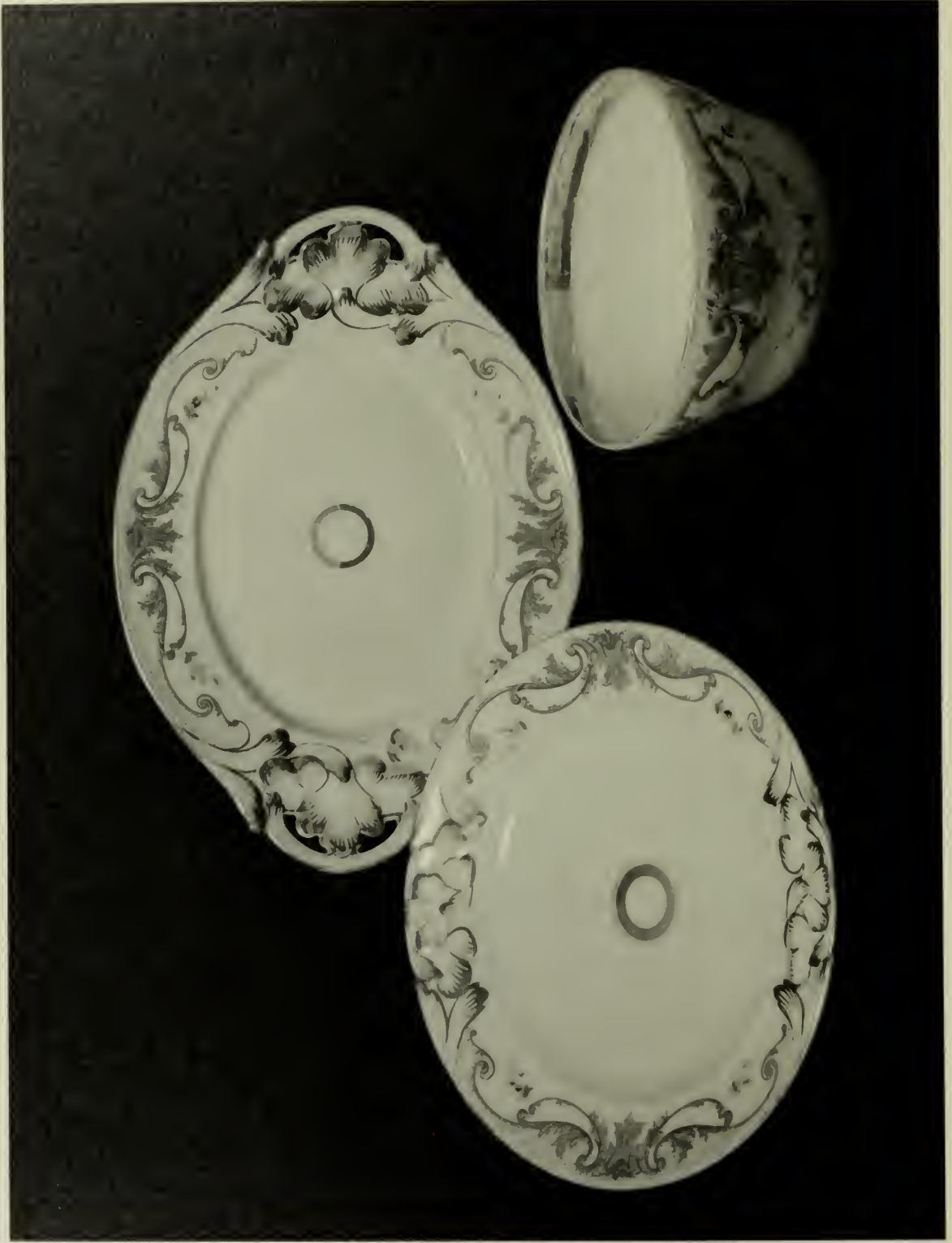


ILLUSTRATION 469


- Title: Platter, Plate and Bowl
- Date: Late 19th century
- Description: In this illustration we see a platter, a plate and a bowl. The decoration on these three pieces is a border of acanthus leaves in sepia and gilt with small floral sprays, roses and violets. Around the very outside edge of each piece in the illustration is a dotted background and in the center is a small gold ring. The Platter is oval in shape. Near the rim of the bowl on the bottom is the mark, , also in sepia brush point dots. (Painter's mark.) They are English.
- Reference: Both the date of the porcelain and the family tradition indicate that these pieces were a part of a set brought to the Old House by Mrs. Charles Francis Adams.



ILLUSTRATION 470

Title: Knives, Forks and Spoons

Date: 1765-1817

Description: The forks and knives have silver handles. The forks have three tines and are made of steel. The blades of the knives are also steel. The spoons are French.

Size of Forks: Length - 8 3/4", Handle - 4 1/4".

Size of Knives: Length - 11 1/4", Handle - 4 1/2".

Reference: The silver knives and forks are English and were made by William H. Abdy in the late eighteenth century. This goldsmith had his silver shop at No. 5 Oat Lane, Noble Street near Cheapside.



ILLUSTRATION 471

Title: Tablespoons

Date: 1783

Description: There are eleven tablespoons. Eight of these have a slightly pointed oval bowl with the initial "A" and hallmarks on the back. The other three have an oval bowl and are marked with cross and hallmarks. By the markings on the back of the tablespoons we have been able to identify that some of these were made by Pierre Guillaume Sallot, some by Pierre Joseph Sant-Pol, and others by Pierre Nicholas Somme. They were bought by Abigail Adams when she was in France and are numbered among the inventory.

Size of spoons marked with "A": Length - 7 3/4".

Size of spoons marked with cross and hallmarks:
Length - 8".

Reference: The forks, knives and spoons were used by Abigail and John Adams when he was President of the United States and when they were in the White House in Washington.



ILLUSTRATION 472

Title: Painting of the Birthplaces
Date: 1849
Artist: G. N. Frankenstein
Description: We quote from the Diary of Charles Francis Adams, March 17, 1851:

"Monday 17th. ...Mr. Frankenstein has sent me the pictures ordered by me long ago. They disappoint me a little. His coloring is cold and thin and he wants fancy, yet he charges me a price high enough for good pictures. I think this will be the last order I give, for they seldom answer expectation."

Charles Francis Adams might not have been satisfied with the paintings of the birthplaces, but they are considered the most authentic available at this time (1968).



ILLUSTRATION 473PAINTING OF JOHN ADAMS

On the right wall of the Butler's Pantry near the Long Hall door is a painting of John Adams by John Singleton Copley. This painting is a very poor copy of the original painting which is at Harvard University. History is unknown. Size: 25" X 30".



ILLUSTRATION 474BACK DOOR KNOCKER

The knocker on the back door is from the house of Miss Elizabeth C. Adams (Cousin Lizzie) and was left by her to the Old House. It has always been the Adams family tradition that the knocker was removed from the house by Thomas Boylston Adams when he moved to his own house in 1829. If that be the case, then this knocker could have been the one used on the door when the 1800 section was added to the house.

WELLS BINDERY INC.
WALTHAM, MASS.
MAY 1970

