

I 29.65:960 ✓
Clemson University



3 1604 019 680 356

OUTDOOR PROGRAM 1960



NATIONAL CAPITAL PARKS



Visitors Enjoying Trip on Historical C & O Canal

The popular "Canal Clipper," in use since 1938, will be replaced during the current season by a new barge designed to more nearly resemble the oldtime freight barges. The new clipper will provide increased conveniences to visitors during canal barge trips.

Cover: View of Potomac River and the Nation's Capital from a recently completed section of George Washington Memorial Parkway near the Virginia shore.—The Washington Star Staff Photo.

MISSION 66

Mission 66 is a program designed to be completed by 1966 which will assure the maximum protection of the scenic, scientific, wilderness, and historic resources of the National Park System in such ways and by such means as will make them available for the use and enjoyment of present and future generations.

UNITED STATES DEPARTMENT OF THE INTERIOR

NATIONAL PARK SERVICE

OUTDOOR PROGRAM

1960



This 20th annual edition of the OUTDOOR PROGRAM presents a schedule of events from April through November in the National Capital Parks, a unit of the National Park Service, United States Department of the Interior.

Contents

	Page
Schedule of Events	1
Supplemental Information	38
Barge Trips—C & O Canal	38
Bird Walks	38
Boat Trips—Potomac and Anacostia Rivers	39
Custis-Lee Mansion	39
Evening Adventures	39
Exploring the Sky	39
Fort Washington, Md.	40
Hikes	40
Historical Tours	40
Historical Tour with Cameras	40
Kenilworth Aquatic Gardens	40
Sylvan Theatre	41
Theodore Roosevelt Island	41
Walks	41
Watergate Concerts	41
Rock Creek Nature Center	43
Related Information	45
Courses for Children or Adults	45
Junior Naturalist Training Course	45
Training Course in Outdoor Leadership	45
Day Camps	45
Great Falls Museum	45
Jefferson Memorial	45
Lincoln Memorial	45
Lincoln Museum and House Where Lincoln Died	45
Pierce Mill	46
School Assembly Talks	46
Spring Hikes	46
Washington Monument	46
Carter Barron Amphitheater	47
Special Events	49

NOTE: *It is important to read the "Supplemental Information" for all activities, but especially for Sylvan Theatre, Evening Adventures, Boat Trips, and Barge Trips.*

April Events

April 3, Sunday:

SPRING FLOWERS 3 p.m. Walk conducted by a Park Naturalist to see wild and cultivated flowers in Dumbarton Oaks Park. Meet at Avon Place and R Street NW.

April 5, Tuesday:

CHERRY BLOSSOM FESTIVAL 3 p.m. Opening ceremony at Japanese Lantern Site, Tidal Basin, Washington, D.C. See your newspaper for program and other related information.

April 9, Saturday:

CHERRY BLOSSOM FESTIVAL 2 p.m. Pageant at Jefferson Memorial. See your newspaper for details.

April 10, Sunday:

BIRD WALK 9 a.m. Dumbarton Oaks Park. Meet a Park Naturalist at Avon Place and R Street NW.

BEAR ISLAND BEAUTY 2 until 6 p.m. Meet in parking area at Cropley, Md., (near Anglers Inn) on C & O Canal. Walk around Bear Island, one of the most scenic areas near D.C. Trail is very rough and unimproved; other than advanced hikers should come another day. Wear leather hiking shoes or boots with nonslip soles. It is also recommended that ladies wear slacks. No public transportation available.

CHERRY BLOSSOM FESTIVAL 2 p.m. Repeat of April 9 pageant at the Jefferson Memorial. See your newspapers for details.

"HOUSE OF DECISION" 2:30 p.m. Historical tour of "Arlington" which was the home of General Robert E. Lee prior to the Civil War. Meet at main entrance to Arlington National Cemetery. (Call KING 9-7800, Ext. 13, for A. B. & W. bus schedule.)

FLOWER WALK 3 p.m. Join a Park Naturalist for walk through Dumbarton Oaks Park. Meet at Avon Place and R Street NW.

April 17, Sunday:

BIRD WALK 9 a.m. Glover and Archbold Parkway. Meet a Park Naturalist at Reservoir Road and Forty-fourth Street NW.

GEOLOGY AT FORT WASHINGTON 10 a.m. until 12 noon. Search for fossils and gypsum crystals with a Park Naturalist and learn about the geologic events of the area. Note: This is not a collecting trip, since it is prohibited by law to collect rocks or minerals in National Park areas. Meet at entrance (sally port) to the old fort. For driving instructions, see *Supplemental Information*. No public transportation available.

FORMAL GARDENS 2 p.m. Conducted tour through a formal park of Italian Renaissance charm. Azaleas and other shrubs are featured. Meet at Meridian Hill Park, Sixteenth and Euclid Streets NW.

FLOWER WALK 3 p.m. Conducted walk through Dumbarton Oaks Park. Meet at Avon Place and R Street NW.

NATURE'S VOICES 7 until 8:30 p.m. Hear a variety of voices as birds settle for the evening, and toads and frogs begin their night's chorus along the C & O Canal. Meet a Park Naturalist at Manning Place and Potomac Avenue NW.

April 24, Sunday:

SPRINGTIME ON BEAR ISLAND 9:30 a.m. until 4 p.m. General nature walk on Bear Island. Bring picnic lunch and water. Trail is very rough and unimproved; other than advanced hikers should come another day. Wear leather hiking shoes or boots with nonslip soles. It is also recommended that ladies wear slacks. Meet in parking area at Cropley, Md., (near Anglers Inn) on C & O Canal. No public transportation available.

NATURE ADVENTURE 2 p.m. Follow a Park Naturalist on a general nature walk in upper Rock Creek Park. Meet at Sixteenth Street and Alaska Avenue NW.

"PLAN FOR PARKS" 2:30 p.m. Historical tour along the Mall as far as the National Gallery of Art and return. Review of the life of Ulysses S. Grant, General and President. Meet at Grant Memorial, First Street and Pennsylvania Avenue NW.

May Events

May 1, Sunday:

BIRD WALK 9 a.m. Meet in Parking Area, Kenilworth Aquatic Gardens.*

LIFE IN A POND 10:30 a.m. Kenilworth Aquatic Gardens.*

May 7, Saturday:

BARGE TRIP 2 p.m. See *Supplemental Information*.

May 8, Sunday:

BIRD WALK 9 a.m. Meet a Park Naturalist at Manning Place and Potomac Avenue NW. for walk along C & O Canal towpath.

FLOWER WALK 10:30 a.m. Meet a Park Naturalist at Manning Place and Potomac Avenue NW. for walk along C & O Canal towpath.

BARGE TRIP 2 p.m. See *Supplemental Information*.

NATURECRAFT SESSION 2 p.m. This activity is planned for adults and junior leaders who desire to learn how to make a fire-by-friction set similar to ones used by Indians before matches were invented. Bring knife and 30¢ for leather thong and wood. Meet at Rock Creek Trail Center on Beach Drive about one-eighth mile south of Military Road NW.

May 14, Saturday:

BARGE TRIP. 2 p.m. See *Supplemental Information*.

May 15, Sunday:

BIRD WALK 9 a.m. Meet in Parking Area, Kenilworth Aquatic Gardens.*

LIFE IN A POND 10:30 a.m. Kenilworth Aquatic Gardens.*

BARGE TRIP 2 p.m. See *Supplemental Information*.

NATURECRAFT SESSION 2 p.m. Learn to use honeysuckle vine in basketry. Primarily for youth leaders. Meet at Rock Creek Trail Center on Beach Drive about one-eighth mile south of Military Road NW.

"THE UNION MUST BE PRESERVED" 2:30 p.m. History of Lincoln Memorial, Ericsson Memorial, Arlington Memorial Bridge, the Equestrian Statues, Roosevelt Island, and buildings along Constitution Avenue. Meet under the inscription of Gettysburg Address in the Lincoln Memorial.

*See *Supplemental Information*.

May 21, Saturday:

BARGE TRIP 2 p.m. See *Supplemental Information*.

May 22, Sunday:

BIRD WALK 9 a.m. Theodore Roosevelt Island. Ferry operates 9 a.m. until 4:30 p.m. today.*

WILDFLOWERS 11 a.m. and 2 p.m. Yellow Irises on Theodore Roosevelt Island present one of the finest wildflower displays of the Washington, D.C. area.*

BARGE TRIP 2 p.m. See *Supplemental Information*.

NATURECRAFT SESSION 2 p.m. Learn to use native clay in modeling. Meet at Rock Creek Trail Center on Beach Drive about one-eighth mile south of Military Road NW.

*See *Supplemental Information*.



Great Falls of the Potomac River.

May 28, Saturday:

BARGE TRIP 2 p.m. See *Supplemental Information*.

May 29, Sunday:

THEODORE ROOSEVELT ISLAND Nature walk, 2 p.m.; campfire, 6:30 p.m.; Nature walk, 7:30 until 8:30 p.m. Ferry runs from 1 until 5:30 p.m. and 6:30 until 8:30 p.m.*

BARGE TRIP 2 p.m. See *Supplemental Information*.

"THE PASSING PARADE" 2:30 p.m. History of Pennsylvania Avenue from Treasury Building to Peace Monument and of past and present buildings and events along the Avenue; memorials to Gen. Sherman, A. R. Shepherd, Gen. Casimir Pulaski, and Gen. W. S. Hancock. Meet at north entrance of Treasury Building, Pennsylvania Avenue at Fifteenth Street NW.

May 30, Monday:

BEAR ISLAND GEOLOGY 9 a.m. until 12 noon. The region near Bear Island has some of the finest geological stories of the Washington area. Explore this Island with a Park Naturalist. Trail is very rough and unimproved; other than advanced hikers should come another day. Wear leather hiking shoes or boots with nonslip soles. It is also recommended that ladies wear slacks. Meet in the parking area at Cropley, Md., (near Anglers Inn) on C & O Canal. Public transportation not available.

THEODORE ROOSEVELT ISLAND 2 p.m. Join a Park Naturalist on a nature walk along the trails of this unusual area.*

BARGE TRIP 2 p.m. See *Supplemental Information*.

*See *Supplemental Information*.

June Events

June 1, Wednesday:

BARGE TRIP 6:30 p.m. See *Supplemental Information*.

June 3, Friday:

SYLVAN THEATRE 8:30 p.m. *Square Dancing*, an exhibition directed by Clair Young. 9 p.m. Certificates will be presented to those youth leaders who completed the Training Course in Outdoor Leadership.

SYLVAN THEATRE LECTURE 9:25 p.m. *Sidelights on an Antarctic Journey*. Color slides by Dr. George Llano, National Academy of Sciences, will portray parts of Australia, New Zealand, and South Africa. In Antarctica we will have glimpses of the bases at McMurdo Sound, Cape Hallett, and Wilkes.

June 4, Saturday:

WATERLILIES 9:30 a.m. Kenilworth Aquatic Gardens. Walk around the pools on a trip conducted by the Park Naturalist.*

ISLAND TREES 2 p.m. With a Park Naturalist as guide, learn some of the trees on Theodore Roosevelt Island.*

BARGE TRIP 2 p.m. See *Supplemental Information*.

CARDEROCK COOKOUT 4:30 until 9:30 p.m. Meet in parking area at Cropley, Md., (near Anglers Inn) on C & O Canal. Walk about two miles each way on towpath. Bring food to cook wrapped in two layers of aluminum foil. No drinking water is available. Return at dusk and hear Nature's night sounds. For those who enjoy being different.

June 5, Sunday:

KENILWORTH AQUATIC GARDENS 9:30 a.m. Park Naturalist conducts walk.*

THEODORE ROOSEVELT ISLAND NATURE WALK 2 p.m.*

BARGE TRIP 2 p.m. See *Supplemental Information*.

GEOLOGY WALK 3 p.m. Join a Park Naturalist to learn about the geological processes and history of this region. Meet at the Harvard Street entrance to the National Zoological Park.

WATERGATE 8:30 p.m. United States Marine Band.*

*See *Supplemental Information*.



"Exploring the Sky" at Fort Reno Park.

June 5, Sunday:

EXPLORING AND PHOTOGRAPHING THE SKY 9 p.m. See and photograph the gibbous moon through powerful telescopes. Also, see several double stars and learn some of the spring constellations.*

June 7, Tuesday:

WATERGATE 8:30 p.m. United States Army Band.*

June 8, Wednesday:

BARGE TRIP 6:30 p.m. See *Supplemental Information*.

June 9, Thursday:

WATERGATE 8:30 p.m. United States Navy Band.*

*See *Supplemental Information*.

June 10, Friday:

SYLVAN THEATRE 8:45 p.m. *Gwalia Chorus* from the young Women's Welsh Club, under the leadership of Mrs. William Story, will sing hymns and folk songs of Wales.

SYLVAN THEATRE TRAVELOGUE 9:15 p.m. *Highways and Byways of Wales* by the veteran traveler, photographer, and delightful speaker, Dr. Henry L. Darner. Using color slides, he will show us the mines, the cities, the people, and the beautiful rolling countryside.

WATERGATE 8:30 p.m. United States Air Force Symphony.*

June 11, Saturday:

KENILWORTH WATERLILIES 9:30 a.m. Enjoy the hardy waterlilies on a guided walk.*

"WASHINGTON FROM THE WATER" 10 a.m. until 12 noon. A historical tour by boat of Potomac landmarks. Hains Point and its development, Tidal Basin outlet, Georgetown, Three Sisters Island, and the Pentagon Lagoon. See *Supplemental Information* for details concerning reservations, fare, and meeting place.

BARGE TRIP 2 p.m. See *Supplemental Information*.

THEODORE ROOSEVELT ISLAND WALK 2 p.m.*

SALAMANDERS AND SNAKES 3 p.m. Learn where and how these secretive creatures live. A few live specimens will be on hand just in case our hunt is not rewarding. Meet at Sixteenth and Geranium Streets NW.

June 12, Sunday:

KENILWORTH AQUATIC GARDENS 9:30 a.m. Learn about the hardy waterlilies on a walk conducted by a Park Naturalist.*

THEODORE ROOSEVELT ISLAND 2 p.m. Explore this wild island with a Park Naturalist.*

BARGE TRIP 2 p.m. See *Supplemental Information*.

LICHEN WALK 3 p.m. A guest expert will introduce us to some of Nature's primitive pioneer plants. Meet at Sixteenth Street and Alaska Avenue NW.

WATERGATE 8:30 p.m. United States Marine Band.*

June 14, Tuesday:

WATERGATE 8:30 p.m. United States Army Band.*

June 15, Wednesday:

BARGE TRIP 6:30 p.m. See *Supplemental Information*.

WATERGATE 8:30 p.m. Summer Symphony Concert.*

*See *Supplemental Information*.

June 16, Thursday:

WATERGATE 8:30 p.m. United States Navy Band.*

June 17, Friday:

SYLVAN THEATRE 8:45 p.m. *Flamenco Fiesta*, a colorful exciting exhibition by the Amor Sirvent Flamenco Dancers.

SYLVAN THEATRE Lecture 9:15 p.m. *Grand Tour, Europa*, a movie travelogue by the well-known photographer and teacher of cinematography, Harrison Houghton. Accompanied by his wife, Virginia, and two daughters, he visited eight European countries. We will see the Changing of the Guard at Buckingham Palace; take a trip on the Rhine

*See Supplemental Information.



Lotus in Bloom at Kenilworth Aquatic Gardens.

June 17, Friday:

River; ride a cog railway in the Swiss Alps; glide about Venice in a gondola; see cathedrals, castles, canals, and gardens besides many other things in Paris, Amsterdam, Rome, and London.

WATERGATE 8:30 p.m. United States Air Force Symphony.*

June 18, Saturday:

WATERLILIES IN ABUNDANCE 9:30 a.m. Kenilworth Aquatic Gardens are world famous. Join a Park Naturalist and enjoy acres of hardy lilies before the season is too far advanced.*

ISLAND ADVENTURE 2 p.m. Explore Theodore Roosevelt Island with a Park Naturalist.*

BARGE TRIP 2 p.m. See *Supplemental Information*.

June 19, Sunday:

BIRD WALK 8 a.m. Go "birding" with a Park Naturalist along the C & O Canal. Meet at Manning Place and Potomac Avenue NW.

KENILWORTH WATERLILIES 9:30 a.m. Accompany a Park Naturalist on a conducted walk.*

THEODORE ROOSEVELT ISLAND 2 p.m. Learn about Nature on a conducted walk by a Park Naturalist.*

BARGE TRIP 2 p.m. See *Supplemental Information*.

FLOOD PLAIN FOREST 3 p.m. Learn about life in the lowland bordering the Potomac River with a Park Naturalist. Meet at Manning Place and Potomac Avenue NW.

WATERGATE 8:30 p.m. United States Marine Band.*

June 21, Tuesday:

FUN WITH NATURE: An Evening Adventure 7 p.m. Theme: Native clay modeling for the hobbyist. Meet Park Naturalists at the Rock Creek Trail Center on Beach Drive about one-eighth mile south of Military Road NW.*

WATERGATE 8:30 p.m. United States Army Band.*

June 22, Wednesday:

BARGE TRIP 6:30 p.m. See *Supplemental Information*.

WATERGATE 8:30 p.m. Summer Symphony Concert.*

June 23, Thursday:

HERPTILES: An Evening Adventure 7:45 p.m. Join the Park Naturalist on a short walk to search out reptiles and amphibians. The evening will be climaxed with a color film. Meet at the *Naturevan* in the parking area at Kenilworth Aquatic Gardens (end of Douglas Street NE.).*

WATERGATE 8:30 p.m. United States Navy Band.*

*See *Supplemental Information*.

June 24, Friday:

SYLVAN THEATRE 8:45 p.m. *Community Singing* to be led by Chief Park Naturalist Maurice Sullivan.

SYLVAN THEATRE TRAVELOGUE 9:15 p.m. *Around the World in Eighty Minutes*. With his slides, Dr. Z. M. Lebensohn will bring to us colorful views from Russia, Afghanistan, Laos, India, and other places in Europe and Asia.

WATERGATE 8:30 p.m. United States Air Force Symphony.*

June 25, Saturday:

KENILWORTH BIRD WALK 8 a.m.*

KENILWORTH WATERLILY WALK 9:30 a.m.*

BARGE TRIP 2 p.m. See *Supplemental Information*.

THEODORE ROOSEVELT ISLAND WALKS 2 and 4 p.m. Ferry runs from 1 until 5:30 p.m.*

THEODORE ROOSEVELT ISLAND CAMPFIRE AND NATURE WALK 7 until 9 p.m. Ferry runs from 6:30 until 9 p.m.*

EXPLORING THE SKY 9 p.m. Observe the thin crescent moon, the moons of Jupiter, star clusters, and nebulae through telescopes. In addition, learn a few summer constellations. Bring pictures taken June 5.*

June 26, Sunday:

WATERLILIES AND POND LIFE 9:30 a.m. On a conducted walk you will learn about the introduced and native plants and as much animal life as can be found at Kenilworth Aquatic Gardens.*

INDIANS ON AN ISLAND 2 p.m. On a walk with a Park Naturalist learn what plants Indians would have used and how they might have lived on Theodore Roosevelt Island.*

BARGE TRIP 2 p.m. See *Supplemental Information*.

"CASCADES AND LILIES" 2:30 p.m. The story of Meridian Hill, Washington's only formal Park, its historical and geographical features, first site of Joaquin Miller Cabin, park development and landscape treatment, memorials to James Buchanan, Dante, Joan of Arc, and La Serenity. Meet at Sixteenth and Euclid Streets NW.

WATERGATE 8:30 p.m. United States Marine Band.*

June 28, Tuesday:

WATERGATE 8:30 p.m. United States Army Band.*

MOUNTAIN TO SEASHORE: An Evening Adventure 9 p.m. Color films will contrast the rugged mountain scenery of Glacier National Park

*See *Supplemental Information*.

June 28, Tuesday:

with the flat subtropical wilderness of Everglades National Park. Meet at the *Naturevan* (near Joan of Arc Statue) in Meridian Hill Park, Sixteenth and Euclid Streets NW.*

June 29, Wednesday:

BARGE TRIP 6:30 p.m. See *Supplemental Information*.

WATERGATE 8:30 p.m. Summer Symphony Concert.

June 30, Thursday:

FUN WITH NATURE: An Evening Adventure 7 p.m. Theme: Leaf printing methods and techniques for the hobbyist. Meet Park Naturalists at the Rock Creek Trail Center on Beach Drive about one-eighth mile south of Military Road NW.*

WATERGATE 8:30 p.m. United States Navy Band.*

*See *Supplemental Information*.

July Events

July 1, Friday:

SYLVAN THEATRE 8:45 p.m. *Around the World in Dance*. The Washington Folk Dance Group, directed by Dave Rosenberg of the District of Columbia Recreation Department, will present a message similar to that of the film to follow. Dances of Germany, Scandinavia, Israel, Yugoslavia, Greece, and Italy will illustrate national similarities and differences.

SYLVAN THEATRE 9:15 p.m. *The Why of Folk Dancing*, a travel movie that is different. Dave Rosenberg will take you to folk festivals in Europe and in the United States.

WATERGATE 8:30 p.m. United States Air Force Symphony.*

July 2, Saturday:

WATERLILIES 9:30 a.m. Walk conducted by a Park Naturalist at Kenilworth Aquatic Gardens.*

THEODORE ROOSEVELT ISLAND WALK 2 p.m.*

BARGE TRIP 2 p.m. See *Supplemental Information*.

July 3, Sunday:

WATERLILIES 9:30 a.m. Walk conducted by a Park Naturalist at Kenilworth Aquatic Gardens.*

THEODORE ROOSEVELT ISLAND WALK 2 p.m.*

BARGE TRIP 2 p.m. See *Supplemental Information*.

JEFFERSON MEMORIAL HISTORICAL TOUR 2:30 p.m. History of the Memorial and the statue of Jefferson; the life of Jefferson; walk under the Japanese cherry trees around the Tidal Basin to the Japanese Pagoda. Meet in front of the statue of Jefferson. Ample parking.

WATERGATE 8:30 p.m. United States Marine Band.*

July 4, Monday:

WATERLILIES 9:30 a.m. Tropical lilies at Kenilworth Aquatic Gardens should be starting to bloom.*

ISLAND DISCOVERY 2 p.m. A Park Naturalist explains features of interest along Theodore Roosevelt Island Trails.*

*See *Supplemental Information*.

July 4, Monday:

BARGE TRIP 2 p.m. See *Supplemental Information*.

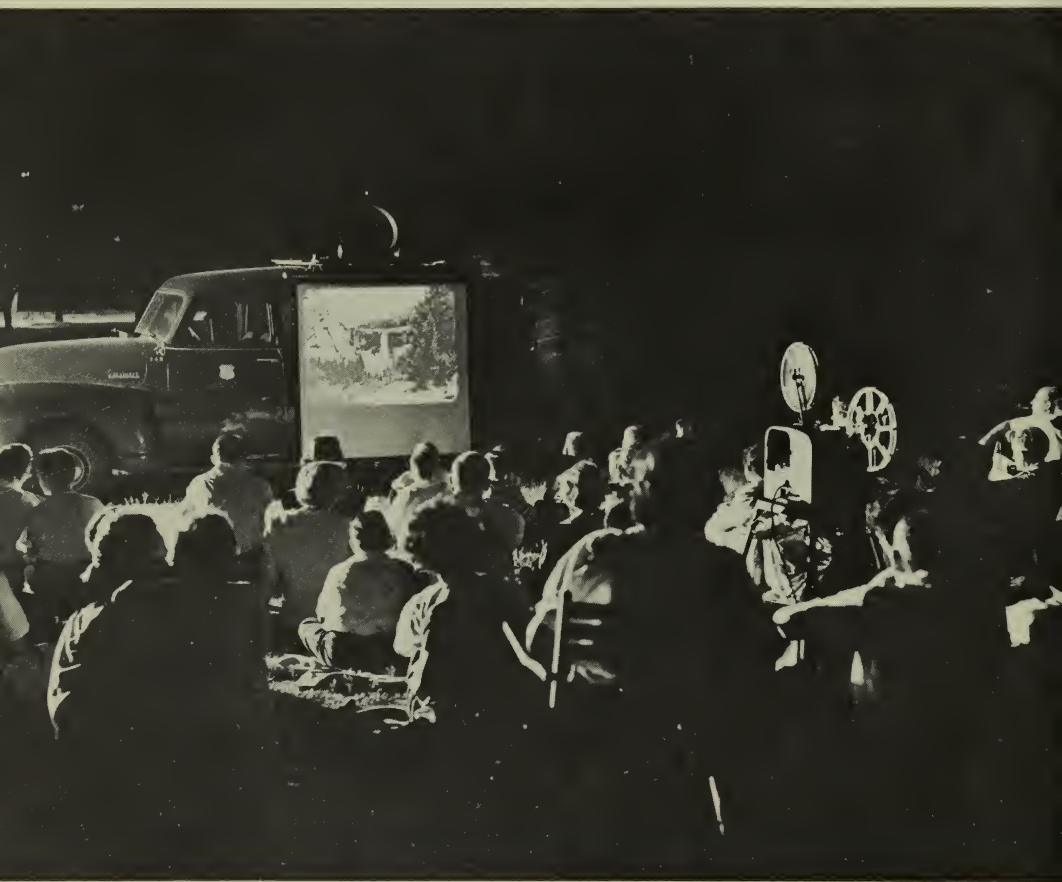
INDEPENDENCE DAY CELEBRATION See your newspaper for details.

July 5, Tuesday:

"BEAVER VALLEY": An Evening Adventure 9 p.m. This brilliant color film depicts the unique life of the beaver and considerable interesting related natural history. Meet at the *Naturevan* in Lincoln Park, East Capital and Twelfth Streets.*

WATERGATE 8:30 p.m. United States Army Band.*

**See Supplemental Information.*



An "Evening Adventure."

July 6, Wednesday:

BARGE TRIP 6:30 p.m. See *Supplemental Information*.

WATERGATE 8:30 p.m. Summer Symphony Concert.*

July 7, Thursday:

THE EARTH'S CHANGING FACE: An Evening Adventure 8 p.m.

Join the Park Naturalist for a short walk to learn something about the geologic processes continually going on around us. The program will be concluded with the showing of a color movie entitled "Understanding our Earth." Meet at the *Naturevan* in Montrose Park, R Street and Avon Place NW.*

WATERGATE 8:30 p.m. United States Navy Band.*

July 8, Friday:

WATERGATE 8:30 p.m. United States Air Force Symphony.*

SYLVAN THEATRE 8:45 p.m. *The Overtones*, a mixed chorus, will present a varied program under the direction of Mrs. Romaldo de Veau.

SYLVAN THEATRE LECTURE 9:15 p.m. *Beauty Surrounds Us* will open your eyes to new natural beauty. In his color slides, Mr. Paul Ehrlich uses the tool of photographic impressionism to make us aware of the beauty that can be found in our daily and seemingly commonplace surroundings. His nature study, closeup, and pattern shots are intended to open our eyes to the poetry of things in the ordinary world around us.

July 9, Saturday:

KENILWORTH AQUATIC GARDENS WALK 9:30 a.m.*

"PHOTOGRAPH SHADOWS OF HISTORY" 10 a.m. Meet with historian at entrance to Fort Washington to take pictures of preselected views of historic and artistic interest. Professional photographs with captions will be available for study. Each must bring his own equipment. See *Supplemental Information* for driving directions.

THEODORE ROOSEVELT ISLAND WALKS 2, 4, and 7 p.m. Ferry will operate from 1 until 5:30 p.m. and from 6:30 until 9 p.m. Campfire at 8 p.m.*

BARGE TRIP 2 p.m. See *Supplemental Information*.

July 10, Sunday:

ANCIENT LOTUSES 9:30 a.m. These lotuses grew from seed which lay dormant in a Chinese sandbank about 1,000 years. See these rare plants in flower at Kenilworth Aquatic Gardens.*

*See *Supplemental Information*.

July 10, Sunday:

THEODORE ROOSEVELT ISLAND WALK 2 p.m.*

BARGE TRIP 2 p.m. See *Supplemental Information*.

FORT STEVENS HISTORICAL TOUR 2:30 p.m. The only restored fortification in Civil War defenses of Washington; story of the Confederate raid on Washington and Battle of Fort Stevens, July 11-12, 1864; visit the smallest National Cemetery in the United States, where 40 of the Union dead are buried. Meet at Fort Stevens, Rittenhouse Street between Georgia Avenue and Thirteenth Street NW.

NATURE WALK 3 p.m. Meet at Rock Creek Trail Center on Beach Drive about one-eighth mile south of Military Road NW.

WATERGATE 8:30 p.m. United States Marine Band.*

July 12, Tuesday:

FUN WITH NATURE: An Evening Adventure 7 p.m. Theme: Leaf printing methods and techniques for the hobbyist. Meet Park Naturalists at the Rock Creek Trail Center on Beach Drive about one-eighth mile south of Military Road NW.*

WATERGATE 8:30 p.m. United States Army Band.*

July 13, Wednesday:

BARGE TRIP 6:30 p.m. See *Supplemental Information*.

WATERGATE 8:30 p.m. Summer Symphony Concert.*

July 14, Thursday:

SUMMER STARS: An Evening Adventure 9 p.m. Learn to identify some of the summer constellations and hear legends relating to them. The program will be concluded with the movie "Exploring the Night Sky." Meet at the *Naturevan* in Fort Reno Park, north of the intersection at Fortieth and Chesapeake Streets NW.*

WATERGATE 8:30 p.m. United States Navy Band.*

July 15, Friday:

SYLVAN THEATRE 8:30 p.m. The *Justin Lawrie Singers* will present a varied program.

SYLVAN THEATRE LECTURE 9 p.m. In commemoration of the establishment of National Capital Parks, July 16, 1790, Mr. T. Sutton Jett, Associate Superintendent, will give a talk on *What the National Capital Parks Offer to You*.

WATERGATE 8:30 p.m. United States Air Force Symphony.* Program will include a salute to National Capital Parks, honoring the anniversary of its establishment on July 16, 1790.

*See *Supplemental Information*.

July 16, Saturday:

LOTUSES AND LILIES 9:30 a.m. Come early to Kenilworth Aquatic Gardens before the tropical lilies close for the day.*

BARGE TRIP 2 p.m. See *Supplemental Information*.

THEODORE ROOSEVELT ISLAND WALKS 2 and 4 p.m. Ferry runs from 1 until 5:30 p.m.*

ISLAND CAMPFIRE AND EVENING WALK 7 until 9 p.m. Ferry operates from 6:30 until 9 p.m.*

July 17, Sunday:

LOTUSES AND LILIES 9:30 a.m. Join a Park Naturalist and enjoy a walk at Kenilworth Aquatic Gardens.*

THEODORE ROOSEVELT ISLAND WALK 2 p.m.*

BARGE TRIP 2 p.m. See *Supplemental Information*.

WATERGATE 8:30 p.m. United States Marine Band.*

July 19, Tuesday:

SUMMER STARS: An Evening Adventure 9 p.m. Learn to identify some of the summer constellations and hear legends relating to them. The program will be concluded with the movie "Exploring the Night Sky." Meet at the *Naturevan* in Fort Reno Park, north of the intersection of Fortieth and Chesapeake Streets NW.*

WATERGATE 8:30 p.m. United States Army Band.*

July 20, Wednesday:

BARGE TRIP 6:30 p.m. See *Supplemental Information*.

WATERGATE 8:30 p.m. Summer Symphony Concert.*

July 21, Thursday:

FUN WITH NATURE: An Evening Adventure 7 p.m. Theme: Native clay modeling for the hobbyist. Meet Park Naturalists at the Rock Creek Trail Center on Beach Drive about one-eighth mile south of Military Road NW.*

WATERGATE 8:30 p.m. United States Navy Band.*

July 22, Friday:

SYLVAN THEATRE 8:30 p.m. The *Scottish Pipe Band and Dancers* will be presented by the St. Andrews Society.

SYLVAN THEATRE LECTURE 9 p.m. *Scotland Calling* will be a color slide presentation of the best pictures obtained by Dr. Fred O. Coe on four trips to Scotland. Lochs and mountains, castles and glens, but

*See *Supplemental Information*.

July 22, Friday:

especially gardens, will be featured. Visit Glencoe, Inverness, Edinburgh, Iona, and many other places.

WATERGATE 8:30 p.m. United States Air Force Symphony.*

July 23, Saturday:

KENILWORTH AQUATIC GARDENS 9:30 a.m. Join the Park Naturalist to learn about the lilies and the lotuses.*

"WASHINGTON FROM THE WATER" 10 a.m. until 12 noon. View historical landmarks: Fort McNair, Naval Gun Factory, Anacostia Bridge (Old Navy Yard Bridge), Naval Air Station, Bolling Air Force Base, early Indian settlements, Washington National Airport, and Arlington. See *Supplemental Information* for details concerning reservations, fare, and meeting place.

ISLAND ADVENTURE 2 p.m. Visit wild Theodore Roosevelt Island with a Park Naturalist.*

BARGE TRIP 2 p.m. See *Supplemental Information*.

FERN WALK 3 p.m. A guest leader will show how to identify native ferns in Rock Creek Park. Meet at Sixteenth and Whittier Streets NW

POWERBOAT REGATTA Potomac River at Washington, D.C. See your newspaper for details.

July 24, Sunday:

KENILWORTH AQUATIC GARDENS 9:30 a.m. Lotuses and lilies will be featured.*

THEODORE ROOSEVELT ISLAND WALK 2 p.m.*

BARGE TRIP 2 p.m. See *Supplemental Information*.

"AND SO THEY MOVED WEST" 2:30 p.m. Brief history of the C & O Canal and its importance to Georgetown, stories of canal life and operation, canal locks 1 to 4, old Wisconsin Avenue Bridge and site of unloading wharves, Alexandria Aqueduct, Foxall Cannon Foundry, and Foundry Branch Tunnel. Meet at Lock 4, one block south of Thomas Jefferson and M Streets NW.*

PARK TREES 3 p.m. Montrose Park has a large variety of trees. On a walk conducted by a Park Naturalist learn to identify some of them. Meet at R Street and Avon Place NW.

POWERBOAT REGATTA Potomac River at Washington, D.C. See newspapers for details.

WATERGATE 8:30 p.m. United States Marine Band.*

July 25, Monday:

WATERGATE: Opera Night 8:30 p.m. Special program by the United States Air Force Symphony.*

*See *Supplemental Information*.

July 26, Tuesday:

WATERGATE 8:30 p.m. United States Army Band.*

AN AMERICAN HERITAGE: An Evening Adventure 8:45 p.m. Colorful films will depict the story of the National Park System and its "new look" through *Mission 66*. Meet at the *Naturevan* in the picnic area on Hains Point, East Potomac Park.*

July 27, Wednesday:

BARGE TRIP 6:30 p.m. See *Supplemental Information*.

WATERGATE 8:30 p.m. Summer Symphony Concert.*

July 28, Thursday:

ANIMALS THROUGH THE SEASONS: An Evening Adventure 8:45 p.m. Come and enjoy these fine color films illustrating the activities of animals at various seasons of the year. Meet at the *Naturevan* in Lincoln Park, East Capitol and Twelfth Streets.*

WATERGATE 8:30 p.m. United States Navy Band.*

July 29, Friday:

SYLVAN THEATRE 8:30 p.m. The *Army Chorus*, under the direction of Captain Samuel Loboda, will present a selection of songs.

SYLVAN THEATRE LECTURE 9 p.m. *Shenandoah National Park, Its People and Natural Scenery* will be presented in movies and stereo color slides by Drs. Lyman Sexton Jr. and Sr. Black and white movies will show the mountain people about 30 years ago, before the National Park was dedicated.

WATERGATE 8:30 p.m. United States Air Force Symphony.*

July 30, Saturday:

TROPICAL WATERLILIES 9:30 a.m. Come to Kenilworth Aquatic Gardens for guided walk.*

BIOLOGY AND GEOLOGY FROM A BOAT 10 a.m. until 12 noon. Naturalist points out geological and natural features, explaining the influence of the Potomac River and how geology has affected the Nation's Capital. See *Supplemental Information* for details concerning reservations, fare, and meeting place.

THEODORE ROOSEVELT ISLAND WALK 2 p.m.*

BARGE TRIP 2 p.m. See *Supplemental Information*.

EXPLORING AND PHOTOGRAPHING THE SKY 9 p.m. Look at and photograph the first quarter moon through fine telescopes. Also, see the moons of Jupiter, the rings of Saturn, and other interesting celestial sights.*

*See *Supplemental Information*.

July 31, Sunday:

KENILWORTH AQUATIC GARDENS 9:30 a.m.*

THEODORE ROOSEVELT ISLAND WALK 2 p.m.*

BARGE TRIP 2 p.m. See *Supplemental Information*.

WATERGATE 8:30 p.m. United States Marine Band.*

*See *Supplemental Information*.

August Events

August 2, Tuesday:

WATERGATE 8:30 p.m. United States Army Band.*

"COTTONTAIL": An Evening Adventure 8:45 p.m. The life of the cottontail and other interesting natural history will be revealed through an excellent color film. Meet at the *Naturevan* (near Joan of Arc statue) in Meridian Hill Park, Sixteenth and Euclid Streets NW.*

August 3, Wednesday:

BARGE TRIP 6:30 p.m. See *Supplemental Information*.

WATERGATE 8:30 p.m. Summer Symphony Concert.*

August 4, Thursday:

POTOMAC INDIANS: An Evening Adventure 7:30 p.m. A short walk to search for wild plants used by the Indians will be followed by a campfire program featuring Indian lore. Meet Park Naturalists at the *Naturevan* in Glover-Archbold Parkway at Reservoir Road and Forty-fourth Street NW.*

WATERGATE 8:30 p.m. United States Navy Band.*

August 5, Friday:

SYLVAN THEATRE 8:15 p.m. *Hawaiian Dances and Songs* will be under the leadership of Mrs. Thomas J. (Lani) O'Connor.

SYLVAN THEATRE LECTURE 8:45 p.m. *Volcanic Wonderland in Our Fiftieth State* is a slide and movie presentation by Mr. Gunnar Fagerlund, formerly Chief Park Naturalist of Hawaii National Park. Eruptions in Mauna Loa and Kilauea Volcanoes will be featured.

WATERGATE 8:30 p.m. United States Air Force Symphony.*

August 6, Saturday:

TROPICAL WATERLILIES 9:30 a.m. Kenilworth Aquatic Gardens.*

THEODORE ROOSEVELT ISLAND WALK 2 p.m.*

BARGE TRIP 2 p.m. See *Supplemental Information*.

VARIETY OF TREES 3 p.m. Native trees and those introduced from other countries will be seen. Meet in Lafayette Park, Sixteenth and H Streets NW.

*See *Supplemental Information*.

August 7, Sunday:

KENILWORTH LILIES 9:30 a.m. Kenilworth Aquatic Gardens.*

THEODORE ROOSEVELT ISLAND WALK 2 p.m.*

BARGE TRIP 2 p.m. See *Supplemental Information*.

WATERGATE 8:30 p.m. United States Marine Band.*

August 9, Tuesday:

NATURE MOVIES: An Evening Adventure 8:45 p.m. The color films "Life in the Forest" and "Life in a Pond" will be shown this evening. Meet at the *Naturevan* in Lincoln Park, East Capitol and Twelfth Streets.*

WATERGATE 8:30 p.m. United States Army Band.*

August 10, Wednesday:

BARGE TRIP 6:30 p.m. See *Supplemental Information*.

WATERGATE 8:30 p.m. Summer Symphony Concert.*

August 11, Thursday:

WATERGATE 8:30 p.m. United States Navy Band.*

SUMMER STARS: An Evening Adventure 9 p.m. Learn to identify some of the summer constellations and hear legends relating to them. The program will be concluded with the movie "Exploring the Night Sky." Meet at the *Naturevan* in Fort Reno Park, north of the intersection of Fortieth and Chesapeake Streets NW.*

August 12, Friday:

SYLVAN THEATRE 8 p.m. *Dances of Bavaria*. The Schuhplattler Verein "Washingtonia," under Mr. Dave Rosenberg, Vorplattler, will present lively dances that might be seen at a Bavarian Alpine Festival. The courtship dance, woodchopper dance, and the Praxplattler, for men only, will be specialties.

SYLVAN THEATRE TRAVELOGUE 8:30 p.m. Mr. William Haussmann, Chief Architect for National Capital Parks, will present a color slide talk on *Mexico, Land of Contrasts*. Visit Mexico City, Monterey, Acapulco, Guadalajara, Tasco, small villages, and the famous Borda Gardens.

WATERGATE 8:30 p.m. United States Air Force Symphony.*

August 13, Saturday:

KENILWORTH AQUATIC GARDENS WALK 9:30 a.m.*

THEODORE ROOSEVELT ISLAND WALK 2 p.m.*

BARGE TRIP 2 p.m. See *Supplemental Information*.

*See *Supplemental Information*.

August 14, Sunday:

KENILWORTH AQUATIC GARDENS WALK 9:30 a.m.*

THEODORE ROOSEVELT ISLAND WALK 2 p.m.*

BARGE TRIP 2 p.m. See *Supplemental Information*.

INSECT WALK 3 p.m. Learn about a variety of insects with a guest leader along the C & O Canal. Meet at Manning Place and Potomac Avenue NW.

WATERGATE 8:30 p.m. United States Marine Band.*

August 16, Tuesday:

SOUNDS OF THE NIGHT: An Evening Adventure 8:45 p.m.
Amazing songs and sounds of nature highlight the evening. Meet at the *Naturevan* in the parking area at Kenilworth Aquatic Gardens (end of Douglas Street NE.)*

WATERGATE 8:30 p.m. United States Army Band.*

August 17, Wednesday:

BARGE TRIP 6:30 p.m. See *Supplemental Information*.

August 18, Thursday:

NATIONAL PARKS: An Evening Adventure 8:30 p.m. We will terminate the series of 1960 *Evening Adventures* with a program in recognition of the establishment of the National Park Service on August 25, 1916. Two outstanding films featuring the national parks will be shown at the *Naturevan* (near the Joan of Arc statue) in Meridian Hill Park, Sixteenth and Euclid Streets NW.*

WATERGATE 8:30 p.m. United States Navy Band.*

August 19, Friday:

SYLVAN THEATRE 8 p.m. The prelude will be announced at a later date.

SYLVAN THEATRE TRAVELOGUE 8:30 p.m. *Travels Through the Philippines* is the story of a year spent on the four major islands by Mr. D. K. Martin. Rice terraces at Bontoc, native villages, scenery, transportation and communication methods, and interesting people will be shown on color slides.

WATERGATE 8:30 p.m. United States Air Force Symphony.*

August 20, Saturday:

WATERLILIES GALORE 9:30 a.m. Tropical waterlilies at Kenilworth Aquatic Gardens should be near their best.*

"WASHINGTON FROM THE WATER" 10 a.m. until 12 noon. A historical tour by boat of Potomac landmarks. Hains Point and its de-

*See *Supplemental Information*.

August 20, Saturday:

velopment, Tidal Basin outlet, Georgetown, Three Sisters Island, and the Pentagon Lagoon. See *Supplemental Information* for details concerning reservations, fare, and meeting place.

THEODORE ROOSEVELT ISLAND WALK 2 p.m.*

BARGE TRIP 2 p.m. See *Supplemental Information*.

August 21, Sunday:

KENILWORTH WALK 9:30 a.m. Enjoy the tropical waterlilies at Kenilworth Aquatic Gardens.*

ISLAND WALK 2 p.m. Visit Theodore Roosevelt Island with a Naturalist.*

BARGE TRIP 2 p.m. See *Supplemental Information*.

*See *Supplemental Information*.



Fort Washington, Sally Port Entrance

August 21, Sunday:

FORT WASHINGTON, MD., HISTORICAL TOUR 2:30 p.m. Approach Fort Washington from the old wharf area. Tour the site of the early fort which burned in 1814 and then the Fort constructed between 1816-1824. Meet at the U.S. Coast Guard bell tower at edge of river. See *Supplemental Information* for driving instructions.

ROWING RACES, PRESIDENT'S CUP REGATTA Potomac River at Washington, D.C. See newspaper for *exact* date and details.

WATERGATE 8:30 p.m. United States Marine Band.*

August 23, Tuesday:

WATERGATE 8:30 p.m. United States Army Band.*

August 24, Wednesday:

BARGE TRIP 6:30 p.m. See *Supplemental Information*.

August 25, Thursday:

WATERGATE 8:30 p.m. United States Navy Band.*

August 26, Friday:

SYLVAN THEATRE 8 p.m. *Community Singing* will be led by Mr. Don Erskine, with Miss Louise Murray at the piano.

SYLVAN THEATRE LECTURE 8:30 p.m. *The National Park Story* will outline the past history, present developments, and some of the future plans for your precious natural possessions. A member of the Director's staff will present color pictures of outstanding areas in the National Park System.

WATERGATE 8:30 p.m. United States Air Force Symphony.*

August 27, Saturday:

KENILWORTH AQUATIC GARDENS WALK 9:30 a.m.*

PIONEER PLANT USES 10 a.m. Meet at Rock Creek Trail Center on Beach Drive about one-eighth mile south of Military Road NW.*

THEODORE ROOSEVELT ISLAND WALK 2 p.m.*

BARGE TRIP 2 p.m. See *Supplemental Information*.

August 28, Sunday:

KENILWORTH AQUATIC GARDENS WALK 9:30 a.m.*

ISLAND SANCTUARY 2 p.m. Learn some of the interesting plants and animals on Theodore Roosevelt Island.*

BARGE TRIP 2 p.m. See *Supplemental Information*.

*See *Supplemental Information*.

August 28, Sunday:

CANOE RACES, PRESIDENT'S CUP REGATTA Potomac River at Washington, D.C. See newspaper for *exact* date and details.

EXPLORING THE SKY 8:15 p.m. See the first quarter moon, the bands in the atmosphere of Jupiter, the rings of Saturn, double stars, star clusters, and other interesting astronomical objects by means of telescopes. Bring photographs taken July 30.*

August 31, Wednesday:

BARGE TRIP 6:30 p.m. See *Supplemental Information*.

*See *Supplemental Information*.

September Events

September 3, Saturday:

KENILWORTH AQUATIC GARDENS WALK 9:30 a.m.*

ISLAND FLOWERS 2 p.m. Visit Theodore Roosevelt Island to learn some late summer flowers.*

BARGE TRIP 2 p.m. See *Supplemental Information*.

September 4, Sunday:

MARSH LIFE 9:30 a.m. Cultivated and wild plants are well displayed at Kenilworth Aquatic Gardens.*

THEODORE ROOSEVELT ISLAND WALK 2 p.m.*

BARGE TRIP 2 p.m. See *Supplemental Information*.

"MEET OUR FRIENDLY ALLIES" 2:30 p.m. Phases of national history as reflected by Lafayette Park; history of nearby homes and statues in park; stories about Randolph-Clay duel, Peggy O'Neal, St. John's Church, and the "Little White House." Life of Lafayette reviewed on this anniversary of his birth. Meet at Jackson Statue in center of Park.

POND LIFE 3 p.m. Learn about food chains and animal life in ponds at Kenilworth Aquatic Gardens.*

September 5, Monday:

BARGE TRIP 2 p.m. See *Supplemental Information*.

September 7, Wednesday:

BARGE TRIP 6:30 p.m. See *Supplemental Information*.

September 10, Saturday:

KENILWORTH AQUATIC GARDENS WALK 9:30 a.m.*

"WASHINGTON FROM THE WATER" 10 a.m. until 12 noon. View historical landmarks; Fort McNair, Naval Gun Factory, Anacostia Bridge (Old Navy Yard Bridge), Naval Air Station, Bolling Air Force Base, Early Indian settlements, Washington National Airport, and Arlington. See *Supplemental Information* for details concerning reservations, fare, and meeting place.

THEODORE ROOSEVELT ISLAND WALK 2 p.m.*

BARGE TRIP 2 p.m. See *Supplemental Information*.

*See *Supplemental Information*.

September 11, Sunday:

KENILWORTH AQUATIC GARDENS WALK 9:30 a.m.*

THEODORE ROOSEVELT ISLAND WALKS 2 and 4 p.m. Ferry runs from 1 until 5:30 p.m.*

ISLAND CAMPFIRE AND NATURE WALK 7 until 9 p.m. Ferry operates 6:30 until 9 p.m.*

BARGE TRIP 2 p.m. See *Supplemental Information*.

"MAN-MADE CHANNEL" 2:30 p.m. Tour of Canal Museum; history of Potomac Canal, C & O Canal, and Great Falls Tavern Building; stories of life on the Canal, canal engineering, and operation, including inspection of locks and other canal structures. Meet at Museum entrance, Great Falls, Md. No public transportation available.

September 17, Saturday:

THEODORE ROOSEVELT ISLAND WALK 2 p.m.*

BARGE TRIP 2 p.m. See *Supplemental Information*.

LICHEN WALK 3 p.m. Nature's plant pioneers are interesting and valuable, but usually unnoticed. Join a guest expert in Rock Creek Park. Meet at Sixteenth Street and Alaska Avenue NW.

POWERBOAT RACES FOR PRESIDENT'S CUP REGATTA Potomac River at Washington, D.C. See your newspaper for details.

September 18, Sunday:

THEODORE ROOSEVELT ISLAND WALK 2 p.m.*

BARGE TRIP 2 p.m.*

INTRODUCTION TO LOCAL GEOLOGY 3 p.m. Join a guest leader on a short walk in the vicinity of the Zoo and learn about the Piedmont Province and the Coastal Plain, including types of rocks found in both areas. Meet at the Harvard Street entrance to the National Zoological Park. Note: This is the first in a series of five geology walks and hikes. See September 24 and October 8, 15, and 30 for additional trips.

POWERBOAT RACES FOR PRESIDENT'S CUP REGATTA Potomac River at Washington, D.C. See your newspaper for details.

September 24, Saturday:

NATURALIST BOAT TRIP 10 a.m. Much of geological and biological interest may be seen on a boat ride up the Potomac River. See *Supplemental Information* for details concerning reservations, fare, and meeting place.

*See *Supplemental Information*.



Geology Walk With a Guest Leader

September 24, Saturday:

FORESTED ISLAND 2 p.m. Join a Park Naturalist and enjoy the Island's wide variety of trees, shrubs, and woody vines.*

NATURECRAFT SESSION 2 p.m. This activity is planned for adults and junior leaders who desire to learn how to make a fire-by-friction set similar to ones used by Indians before matches were invented. Bring knife and 30¢ for leather thong and wood. Meet at Rock Creek Trail Center on Beach Drive about one-eighth mile south of Military Road NW.

BARGE TRIP 2 p.m. See *Supplemental Information*.

COASTAL PLAIN ROCKS AND MINERALS 3 p.m. View in detail the characteristics of the Coastal Plain, and learn something about bog iron and petrified wood. Meet at Hawaii Avenue and Allison Street NE. near Fort Totten Park. Note: This is the second in a series of five

*See *Supplemental Information*.



The Old Stone House

This historic house, located at 3051 M Street NW., was opened January 24, 1960. Visiting hours are 1 until 5 p.m., Wednesday through Sunday. See historical tour scheduled Sunday, September 25, 1960.

September 24, Saturday:

geology walks and hikes. See October 8, 15, and 30 for additional trips.

SAILING RACES—PRESIDENT'S CUP REGATTA Potomac River at Washington, D.C. See newspaper for *exact* date and details.

September 25, Sunday:

INDIANS ON ROOSEVELT ISLAND 2 p.m. Learn how the Indians would have used the plants, animals, and rocks found on Theodore Roosevelt Island.*

BARGE TRIP 2 p.m. See *Supplemental Information*.

OLD STONE HOUSE AND VICINITY 2:30 p.m. View this historic house built in 1765, believed to be one of the oldest houses in Georgetown, D.C., and stroll leisurely along Old Bridge Street and the C & O Canal towpath for an introduction to the historic heritage of the Nation's Capital. Meet at the Old Stone House, 3051 M Street NW.

MUSHROOM WALK 3 p.m. A guest leader will introduce to us the interesting fungi of Rock Creek Park and explain their role in Nature. Meet at Trail Center on Beach Drive about one-eighth mile south of Military Road NW.*

SAILING RACES—PRESIDENT'S CUP REGATTA Potomac River at Washington, D.C. See newspaper for *exact* date and details.

EXPLORING THE SKY 7:30 p.m. Observe the mountains and craters of the moon, Venus, Jupiter, Saturn, and the great galaxy in Andromeda through powerful telescopes. In addition, learn some fall constellations.*

*See *Supplemental Information*.

October Events

October 1, Saturday:

BARGE TRIP 2 p.m. See *Supplemental Information*.

THEODORE ROOSEVELT ISLAND WALKS 10 a.m. and 2 p.m.

Ferry operates from 9:30 a.m. until 4 p.m.*

MOSS WALK 3 p.m. / A guest leader will conduct a walk to assist you in learning about these interesting plants. Meet at Sixteenth and Whittier Streets NW.

October 2, Sunday:

INDIANS ALONG THE ANACOSTIA 10 a.m. Join a Park Naturalist at Kenilworth Aquatic Gardens and visit one of the sites where Indians once lived.*

THEODORE ROOSEVELT ISLAND WALKS 2 and 4 p.m. Autumn is a wonderful season to explore. Join a Park Naturalist at 2 or 4 p.m. Ferry operates from 1:30 until 5:30 p.m.*

BARGE TRIP 2 p.m. See *Supplemental Information*.

AUTUMN FLOWER WALK 3 p.m. Join a Park Naturalist at Kenilworth Aquatic Gardens.*

October 8, Saturday:

BIRD WALK 9 a.m. Go "birding" with a Park Naturalist along the C & O Canal. Meet at Manning Place and Potomac Avenue NW.

ISLAND ADVENTURES 10 a.m. and 2 p.m. Learn about the plants, animals, and rocks on Theodore Roosevelt Island. Ferry operates from 9:30 a.m. until 4 p.m.*

BARGE TRIP 2 p.m. See *Supplemental Information*.

INSECT WALK 3 p.m. Learn about a variety of insects with a guest leader at Kenilworth Aquatic Gardens. Meet in the parking area (end of Douglas Street NE.).*

ROCKS AND MINERALS OF THE PIEDMONT 3 p.m. View in detail the rocks and minerals of the Piedmont as they are exposed in an abandoned quarry. Meet a Park Naturalist in Montrose Park, R Street and Avon Place NW. Note: This is the third in a series of five geology walks and hikes. See October 15 and October 30 for additional trips.

*See *Supplemental Information*.

October 9, Sunday:

THEODORE ROOSEVELT ISLAND WALKS 2 and 4 p.m. Ferry operates from 1:30 until 5:30 p.m.*

BARGE TRIP 2 p.m. See *Supplemental Information*.

"A MAN AND A PLAN" 2:30 p.m. The Washington Monument and points of interest along the Mall as far as the Smithsonian Institution are an interesting physical introduction to the history of city planning and General Washington's contribution to the Nation and City. Meet at the Monument entrance.

OAKS AND ACORNS WALK 3 p.m. A guest expert will show us how to identify the oaks, including some hybrids. Meet at the Rock Creek Trail Center on Beach Drive about one-eighth mile south of Military Road NW.

October 15, Saturday:

THEODORE ROOSEVELT ISLAND WALKS 10 a.m. and 2 p.m. Ferry operates from 9:30 a.m. until 4 p.m.*

BARGE TRIP 2 p.m. See *Supplemental Information*.

POTOMAC RIVER IN THE PIEDMONT 2 p.m. until 5 p.m. This trip and the next in the series provide a contrast of topographic features of the Potomac River in the Piedmont with those in the Coastal Plain. Only opportunity during series to see certain rock types and structural forms. Trail is very rough and unimproved; other than advanced hikers should come another day. Wear leather hiking shoes or boots with non-slip soles. It is also recommended that ladies wear slacks. Meet in parking area at Copley, Md., (near Anglers Inn) on C & O Canal. No public transportation available. Note: This is the fourth in a series of five geology walks and hikes. See October 30 for final trip.

October 16, Sunday:

ISLAND VARIETY 2 and 4 p.m. Theodore Roosevelt Island offers variety from marsh, swamp, and flood plain to ridges. Ferry operates from 1:30 until 5:30 p.m.*

BARGE TRIP 2 p.m. See *Supplemental Information*.

"A NIGHT OF TERROR" 2:30 p.m. The story of the life and death of Abraham Lincoln, the flight of assassin John Wilkes Booth, and a tour of the buildings. Meet at Lincoln Museum, 511 Tenth Street NW.

PIONEER PLANT USES 3 p.m. Rock Creek Park still contains many kinds of plants which your pioneer forefathers found essential. Find out what these plants were and how they served man's needs. Meet at Sixteenth Street and Alaska Avenue NW.

*See *Supplemental Information*.



Lincoln Museum (Ford's Theatre)

October 22, Saturday:

BIRD WALK 9 a.m. Meet at Rock Creek Trail Center on Beach Drive about one-eighth mile south of Military Road NW.

THEODORE ROOSEVELT ISLAND WALKS 10 a.m. and 2 p.m.

Ferry operates from 9:30 a.m. until 4 p.m.*

BARGE TRIP 2 p.m. See *Supplemental Information*.

October 23, Sunday:

THEODORE ROOSEVELT ISLAND WALKS 2 and 4 p.m. Ferry operates from 1:30 until 5:30 p.m.*

BARGE TRIP 2 p.m. See *Supplemental Information*.

October 29, Saturday:

BARGE TRIP 2 p.m. See *Supplemental Information*.

FALL IN THE FOREST 3 p.m. Learn what changes occur in plants and animals as winter approaches. Meet at Forty-fourth Street and Reservoir Road NW, adjoining Glover-Archbold Parkway.

EXPLORING AND PHOTOGRAPHING THE SKY 7 p.m. Observe and photograph the gibbous moon through reflecting and refracting telescopes. Also, see Venus, the moons of Jupiter, the rings of Saturn, star clusters, and other interesting objects in the sky. Dress warmly.*

October 30, Sunday:

POTOMAC RIVER IN THE COASTAL PLAIN 2 p.m. until 5 p.m.

Contrast the drowned river valley and terraces of the Coastal Plain with the narrow rugged valley in the Piedmont. Also, search for marine fossils and gypsum crystals. Meet at the entrance (sally port) to the old fort at Fort Washington. For driving instructions, see *Supplemental Information*. Public transportation not available. Note: This is not a collecting trip, since it is prohibited by law to collect rocks and minerals in National Park areas.

BARGE TRIP 2 p.m. See *Supplemental Information*.

*See *Supplemental Information*.

November Events

Weather during November can be quite variable. Wear hiking shoes or boots and bring an extra sweater. Toughen up before cold weather, and see how Nature prepares for the winter season.

November 5, Saturday:

ROCK CREEK PARK HIKE 2 until 5 p.m. Meet at Sixteenth Street and Alaska Avenue NW. Hike ends same place.

November 6, Sunday:

CARDEROCK COOKOUT AND HIKE 2 until 6 p.m. Bring your own food wrapped in two layers of aluminum foil. Also, bring your own water and instant mixes. Water will be heated for hot drinks. Meet in parking area at Cropley, Md., (near Anglers Inn) on C & O Canal. Hike about two miles each way on canal towpath. No public transportation available.

November 12, Saturday:

GLOVER-ARCHBOLD PARKWAY HIKE 2 until 5 p.m. Meet at P and Forty-fourth Streets NW. Return to starting point.

November 13, Sunday:

ROCK CREEK AND POTOMAC PARKWAY HIKE 2 until 5 p.m. Meet at Connecticut Avenue entrance to Zoo for a hike along Rock Creek. Hike ends near Pennsylvania Avenue and M Street NW.

November 19, Saturday:

BEAR ISLAND HIKE 2 until 5 p.m. Visit again this wild interesting area. Meet in parking area at Cropley, Md., (near Anglers Inn) on C & O Canal. No public transportation available.

November 20, Sunday:

VIRGINIA SHORE, POTOMAC RIVER HIKE 2 until 5 p.m. Meet at Rosslyn Circle near Key Bridge. Hike ends at Chain Bridge. Trail is very rough and unimproved; other than advanced hikers should come another day. Wear leather hiking shoes or boots with nonslip soles. It is also recommended that ladies wear slacks.

November 26, Saturday:

FORT WASHINGTON, MD., HIKE 2 until 4 p.m. Meet at entrance (sally port) to the old fort. Hike ends at same point. For driving directions, see *Supplemental Information*. No public transportation.

November 27, Sunday:

ROCK CREEK PARK HIKE 2 until 5 p.m. Meet at Trail Center, on Beach Drive about one-eighth mile south of Military Road NW., for hike in central part of Park. Return to starting point.

Supplemental Information

All interpretive events listed in this program are conducted by Park Historians or Park Naturalists who accompany those participating to provide interpretation and answer questions. These activities are free except for transportation on barge and boat trips.

Public transportation is available to most meeting places. Call the proper transportation company for details on how to reach each meeting place. If in the District, call D.C. Transit, FEderal 7-1300.

BARGE TRIPS: Mule-drawn barge trips on the Chesapeake and Ohio Canal are conducted in cooperation with Government Services, Inc. A Park Historian or Park Naturalist accompanies the visitors on each scheduled trip to interpret the history of the Canal and natural features along the way. Trips are made regardless of inclement weather.

Because of limited seating capacity, tickets are on sale at the office of Government Services, Inc., 1135 Twenty-first Street NW. (call FEderal 7-8080), from 8 a.m. until 4:30 p.m., Monday through Friday. Tickets are also available at the barge before departure. (On weekends and holidays, call NAational 8-0037 for information.) Soft drinks, ice cream, candy, cookies, and postcards are sold on the barge. Organized groups may charter the barge on Monday, Tuesday, Thursday, and Friday evenings through Government Services, Inc.

Schedule

May 7 through October 30 (Saturdays, Sundays, and holidays):

Adults, \$1 round trip; children 12 and under, 60¢ round trip.

At 2 p.m. the barge leaves Lock 3, located one block south of Thirtieth and M Streets NW., and proceeds upstream to Lock 5, Brookmont, Md.

Following a 10-minute rest stop, the barge returns to Lock 3, arriving about 6 p.m.

June 1 through September 7 (Wednesday evenings):

Adults, 75¢; children 12 and under, 50¢.

At 6:30 p.m. the barge leaves Lock 3, one block south of Thirtieth and M Streets NW. Barge returns to Lock 3 at 9:30 p.m.

BIRD WALKS: The trips are led by Park Naturalists trained in both bird lore and techniques of bird watching. Binoculars are helpful, but they are not absolutely necessary.

BOAT TRIPS: Six motorboat trips are scheduled on the Anacostia and Potomac Rivers. Four trips will be led by Park Historians on June 11, July 23, August 20, and September 10. Park Naturalists will conduct a trip July 30 and another September 24. All are two hours in length and leave at 10 a.m. from the float on the Potomac River at the foot of Wisconsin Avenue in Georgetown. An open-type motorboat without overhead cover or cabin is used for these trips. Reservations *must* be made in advance—but *not earlier than two weeks prior to the date a given trip is scheduled*—by calling Government Services, Inc., FEderal 7-8080. The fare for adults is \$1.50 and for children 12 or under, 80¢.

CUSTIS-LEE MANSION: This "House of Decision," completed between 1804 and 1818, was known as Arlington House and became the home of General Robert E. Lee for 30 years before the Civil War. Interpretive personnel is on duty, when the Mansion is open, to answer questions and acquaint visitors with its unique history. Located in Arlington National Cemetery, it is open from 9:30 a.m. until 6 p.m. from April 1 until October 1. From October until April it closes at 4:30 p.m. Admission fee of 25¢ is charged all over 18 years of age. To arrange tours for organized groups, call JACkson 2-3000, Ext. 2146. (Call KIng 9-7800, Ext. 13, for AB&W bus schedule.)

EVENING ADVENTURES: These activities are designed primarily for family groups and children. They are scheduled at various locations on Tuesday and Thursday evenings from June 21 through August 18. No seating is provided; so bring a blanket to spread on the ground or a folding chair. The majority of programs feature movies projected at the *Naturevan*, a unique, mobile, audiovisual unit.

Interspersed through the season, however, are four programs titled *Fun with Nature* scheduled at 7 p.m. Each of them will include a short nature walk, a talk-demonstration, and actual opportunity to have some practice in the nature hobby theme of the evening.

If raining at the scheduled time, the event is canceled.

EXPLORING AND PHOTOGRAPHING THE SKY: Members of the National Capital Astronomers bring their telescopes to these evening events and focus them on the moon, planets, and stars. They point out the constellations and tell about the legends and mythology associated with them. If you have a pair of binoculars, bring them and learn how to use them to make astronomical observations. In order to take satisfactory telescopic pictures of the moon when photographing the sky is scheduled, a camera with adjustable diaphragm and shutter speeds is necessary; single-lens reflex cameras are particularly well suited for this purpose. Film with ASA speed 80 or more should be used. On cloudy evenings illustrated talks on astronomy are substituted. If it is raining at the scheduled time, the event is canceled. Astronomy events are held in Fort Reno Park, north of the intersection of Fortieth and Chesapeake Streets NW.

FORT WASHINGTON, MD.: This guardian of the Nation's Capital, the history of which dates from 1808 to the present, was built to protect the City. On the reservation there are excellent sites for picnics. Historical exhibits may be seen at the entrance (sally port) to the old fort between 10 a.m. and 5 p.m. on Saturdays, Sundays, and holidays from June 4 through Labor Day. The fort may be reached via Nichols Avenue and South Capitol Street SE, to Indian Head Road (Maryland State Route 224). Turn right $5\frac{1}{2}$ miles below the District line, and follow directional signs to the parking lot for the old fort. There is no admission fee. Special arrangements for organized groups to tour the fort may be made by calling REpublic 7-1820, Ext. 2565.

HIKES: Hikes are those longer, more difficult walks scheduled for November. Sturdy shoes and warm field clothing should be worn. One of these trips includes a cookout; come prepared with your own food and eating utensils. Interpretation is carried out on these trips, and questions are welcomed.

HISTORICAL TOURS: Visits to national memorials and sites of national historic interest in and about the Nation's Capital are conducted by Park Historians and provide an opportunity to become acquainted with the history and significance of Washington's historic sites. This series of walks makes available the history of several of the larger memorials and historic sites in greater detail than is usually presented in the areas themselves. The walking distance is short and the pace leisurely.

HISTORICAL TOUR WITH CAMERAS: Catching history with a camera should be an interesting experience for those who wish to take pictures with their own equipment. Fort Washington provides challenges to historical photographers. This tour will be conducted by a Park Historian assisted by a guest photographer.

KENILWORTH AQUATIC GARDENS: Here, in a number of verdant riverside pools, grow hardy and tropical waterlilies and lotuses. Native flowers, birds, and aquatic animals lend variety and excitement to the quiet pools and marshy fringe. Wild irises begin their colorful display by mid-May to be followed by the hardy waterlilies that come into bloom in early June. By mid-July lotuses and tropical varieties make a show with their varied colors which last into October. The gardens are at their best in the mornings.

Park Naturalists conduct a variety of interpretive walks around the pools and through the adjoining marshland each weekend beginning June 4 and continuing through September 11. Consult each month's EVENTS for hours.

To reach Kenilworth Aquatic Gardens by auto, follow Kenilworth Avenue northbound to Quarles Street exit, bear right, across Eastern Avenue overpass, turn left to Douglas Street, then right on Douglas Street to parking area and office. Bus passengers reach the Gardens by taking route U-2, alighting at Kenilworth Avenue and Polk Street NE, using the pedestrian overpass, and walking west on Douglas Street to parking area and office.

SYLVAN THEATRE: Each Friday evening during June, July, and August a distinguished outdoor program is held in the Sylvan Theatre on the Washington Monument grounds. Each opens with a half-hour concert or dance presentation followed by an illustrated talk of approximately an hour by a guest speaker.

The Sylvan Theatre may be reached from streetcars on Fourteenth Street marked "Bureau Engraving." Ample parking space for automobiles is available in the Monument parking lot on Constitution Avenue at Sixteenth Street, on the roadways near the Monument, and along the westbound lane of Independence Avenue.

If weather is unfavorable, the program will be held in the Commerce Department Auditorium on Fourteenth Street between Constitution Avenue and E Street NW. A sign on the Sylvan Theatre stage and at the Commerce Building entrance will announce change of location. If in doubt, call the United State Park Police (REpublic 7-1820, Ext. 3161) after 6:30 p.m. on the program date.

This summer's series again features a wide variety of subjects. The speakers, as well as the dance and music groups, appear as a public service. To them, the sincere thanks of National Capital Parks. For information, call REpublic 7-1820, Ext. 2557.

THEODORE ROOSEVELT ISLAND: This island, accessible only by boat, is preserved as a memorial to President Theodore Roosevelt. A Park Naturalist is on duty during the hours the ferry operates. He leads nature walks starting at the orientation station, where exhibits explain the Island's significance and story.

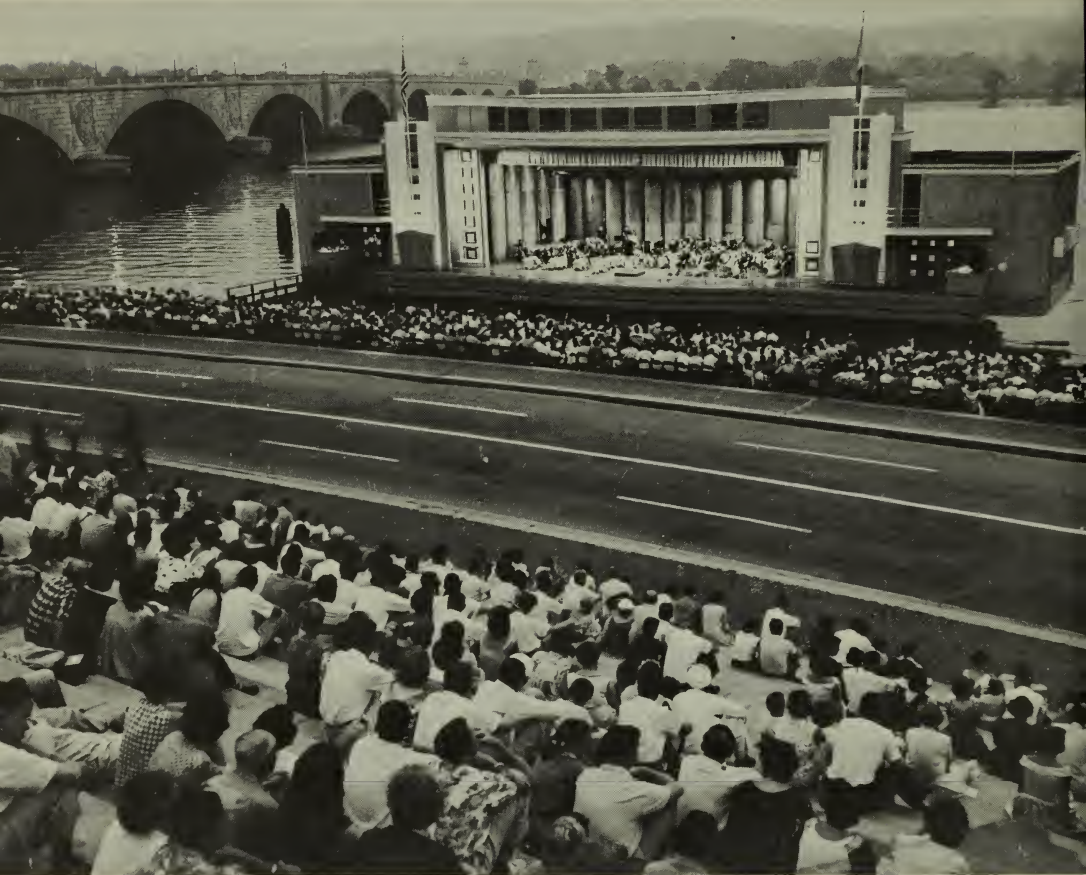
Three and a half miles of foot trails lead through swamp, woodland, and besides one of the few unspoiled marshes in the Washington region. These varied habitats contain a wealth of flowers, trees, birds, and other animals.

The ferry operates from the float on the Potomac River at the foot of Wisconsin Avenue in Georgetown on each Saturday and Sunday from May 29 through October 23—1 until 4:30 p.m., with additional service as shown in each month's EVENTS. There is no charge for the ferry.

WALKS: Park Naturalists lead a variety of nature walks during which they emphasize rocks, plants, animals, and natural processes in the National Capital Parks. Guest leaders occasionally give of their time and experience on special walks. All walks are conducted rain or shine. Come prepared.

WATERGATE THEATER: Concerts are given at 8:30 p.m. from June 5 through August 26 with the United States Marine Band playing on Sunday evenings; the United States Army Band playing on Tuesday evenings; the United States Navy Band playing on Thursday evenings; and the United States Air Force Symphony Orchestra playing on Friday evenings. In addition, *Summer Symphony Concerts* sponsored by the D.C. Recreation Department; Local 161, American Federation of Musicians; and Music Performance Trust Fund of the

Recording Industry will be given on Wednesday evenings at 8:30 p.m. from June 15 through August 10. The *Watergate Theater* is located on the Potomac River near the Lincoln Memorial, just north of the Arlington Memorial Bridge. Parking is available on nearby streets and park drives. Potomac Park buses furnish public transportation. Concerts are canceled in case of rain. Admission is free.



Watergate Concert

Rock Creek Nature Center

A highlight of 1960 in your National Capital Parks is the opening of the new Rock Creek Nature Center. Located in an attractive woodland setting in Rock Creek Park about one-fourth mile southeast of the intersection of Military and Glover Roads NW., the Nature Center is designed to help the visitor understand and appreciate his natural surroundings. A modern building houses an exhibit hall, an auditorium, offices, and a planetarium, the latter being the first public "Theater of the Stars" in the Washington area. Although the exhibits and activities at the Nature Center are designed primarily for children, adults likewise find them interesting and enjoyable.

A visitor to the Nature Center can select from several absorbing attractions. The exhibits, many of which are "work-it-yourself" devices, feature the geology, plants, insects, birds, and other wild animals of Rock Creek Park and other National Capital Park areas. In the woodland outside, the visitor can stroll leisurely to observe the abundant plant and animal life, or he can utilize the self-guiding nature trail and other interpretive devices.

In the Nature Center Auditorium, exciting programs on natural history, conservation, and nature hobbies are presented. In the Planetarium the audience is seated comfortably under the 24-foot dome, and as the lights dim a Park Naturalist projects the stars and planets overhead. This creates the illusion of being outdoors on a dark, clear night. Then the story of our neighbors in the solar system and the star-studded reaches of outer space is interestingly told.

As interpreted by the Park Naturalist, Nature comes vividly alive. The outdoors takes on new meaning; with clearer understanding comes a keener appreciation of the natural world—to both child and parent.

The Nature Center exhibit hall is open all day Tuesday through Saturday, and on Sunday afternoon; it is closed Monday. Planetarium programs during school hours are presented by appointment only; late afternoon and Saturday showings are open to the general public. No reservation is necessary for admittance to any regularly scheduled auditorium program.

A brochure, describing the Nature Center, and a schedule of activities are available upon request. To reach the Nature Center, follow the signs from the intersection of Military and Glover Roads NW. (opposite Oregon Avenue). For information and appointments, call REpublic 7-1820, Ext. 638.



Architectural Sketch of New Rock Creek Nature Center.

Related Information

Courses for Children or Adults:

JUNIOR NATURALIST TRAINING COURSE: Park Naturalists conduct a Nature course for 5th and 6th graders which begins in March and continues through April.

TRAINING COURSE IN OUTDOOR LEADERSHIP: Training for persons interested in Nature leadership and techniques of camp counseling is given on the four Saturdays (four 6-hour sessions) in May.

DAY CAMPS: Nature activities are of first importance in D.C. Recreation Department Day Camps where Park Naturalists cooperate with camp leaders to provide thrilling outdoor adventures. Children wishing to attend these free camps may telephone the D.C. Recreation Department (ADams 4-2050) for information and applications.

GREAT FALLS MUSEUM: The Historical and Natural History Museums are open daily from June through Labor Day and on Saturdays and Sundays, weather permitting, for the remainder of the year. The Natural History Wayside Exhibit is open daily except Tuesdays and Wednesdays from late June through Labor Day. By arranging in advance with the Park Naturalist or Park Historian, parties of 15 or more may take short walks to the Great Falls of the Potomac or along the C & O Canal towpath to learn firsthand the story of Nature and history. Call REpublic 7-1820, Ext. 2557.

JEFFERSON MEMORIAL: Reflection on the life of Thomas Jefferson in this memorial is a rewarding experience. Open daily from 9 a.m. until 9 p.m. Special group visits can be arranged by calling REpublic 7-1820, Ext. 2546. Admission free.

LINCOLN MEMORIAL: Visit and meditate on the life of Abraham Lincoln. Open daily from 9 a.m. until 10 p.m. Special group visits may be arranged by calling REpublic 7-1820, Ext. 2573. No admission fee.

LINCOLN MUSEUM AND THE HOUSE WHERE LINCOLN DIED: Ford's Theatre and the Petersen House, located across the street, were made famous during an April night of terror which claimed a President's life. The theatre is now a museum dedicated to a study of Lincoln's life. The exhibit is divided into two sections, the first of which covers the entire life and career of this great "self-made" man. The second part deals solely with Lincoln's assassination and the conspirators. The house across the street is maintained in much the same condition that it was the night Lincoln died there.

The museum is open Sundays and holidays from 12:30 until 9 p.m. and Monday through Saturday from 9 a.m. until 9 p.m. The house is open Sundays and holidays from 12:30 until 5:30 p.m. and Monday through Saturday from 9 a.m. until 5:30 p.m. For group arrangements call REpublic 7-1820, Ext. 2565. Admission fee, 10¢; all under 19 free.

PIERCE MILL: The present structure is believed to have been built about 1820. The mill is located in Rock Creek Park at the intersection of Beach Drive and Tilden Street. It is open to the public as indicated by the following schedule:

June 16 through August 31

Saturdays from 9 a.m. until
5 p.m.

Sundays from 1 until 5 p.m.

September 1 through June 15

Fridays from 9 a.m. until
5 p.m.

Sundays from 1 until 5 p.m.

There is no admission fee. School groups may visit the mill on Fridays from September 1 through June 15. For group arrangements with the miller call FEderal 7-8080.

SCHOOL ASSEMBLY TALKS: Illustrated talks explaining the historical and natural features of National Capital Parks are presented from early October through about mid-March by Park Historians and Park Naturalists. These are planned to complement the school curriculum and may be requested by any school within an 8-mile radius of the White House. An announcement of these talks is issued in early September.

SPRING HIKES: Early spring hikes conducted by Park Naturalists are scheduled on March weekends.

WASHINGTON MONUMENT: This outstanding landmark was constructed between 1848 and 1884. The various memorial stones are focal points of interest for those who take the stairway. An excellent view of the city, which Washington helped plan, is the reward of all who reach the top. Open daily from 9 a.m. until 5 p.m. Ascent may be made by elevator or by stairway. Elevator charge, 10¢; there is no charge for those under 19. For special group arrangements, call REpublic 7-1820, Ext. 2565.

Carter Barron Amphitheater

Each evening from early June through Labor Day special summer entertainment is presented under the stars at Carter Barron Amphitheater in Rock Creek Park adjacent to Sixteenth Street and Colorado Avenue NW. It is reached via the Sixteenth Street bus line and Fourteenth Street streetcars. Special buses await theater-goers at the theater entrance after each performance. A paved parking area accommodates about 1,100 automobiles.

Programs feature Musicals and Operettas direct from Broadway, Symphony Concerts, Folk Music with outstanding guest artists, and Ballets featuring internationally famous dancing stars. All performances begin at 8:30 p.m. The complete summer schedule is available about May 1.

Tickets are on sale at Carter Barron Amphitheater Box Office, Rock Creek Park (Phone Tuckerman 2-2620), and at the Super Music City Box Office, 1350 F Street NW. (Phone STerling 3-3234). For program information write: Superintendent, National Capital Parks, Room 1211, Interior Building, Washington 25, D.C.



An Evening at Carter Barron Amphitheater.

Special Events

The CHERRY BLOSSOM FESTIVAL, INDEPENDENCE DAY CELEBRATION, POWERBOAT REGATTA, and PRESIDENT'S CUP REGATTA are among the special celebrations held throughout the year. Dates for these occasions are shown in the monthly EVENTS of the preceding pages. Watch the newspapers or call RRepublic 7-1820, Ext. 2095, for detailed information.



Cherryblossomtime at the Tidal Basin.

OUTDOOR PROGRAM
FOR 1961
WILL BE PUBLISHED NEXT MARCH

FOR COPIES, WRITE
THE SUPERINTENDENT
NATIONAL CAPITAL PARKS
UNITED STATES DEPARTMENT OF THE INTERIOR
WASHINGTON 25, D.C.



Winter in Rock Creek Park

Many varied activities form the winter program of National Capital Parks. Interesting background history of many national memorials and historic sites, wise use of city parks, and thrilling stories of the wildlife living there are given as illustrated school assembly talks upon request. At the Rock Creek Nature Center, a full schedule of exciting natural history, conservation, nature hobby, and planetarium programs is presented. Illustrated talks with color film are presented by guest speakers in the Interior Department Auditorium. For information, write the Superintendent, National Capital Parks.

U.S. Department of the Interior
National Park Service
National Capital Parks
Washington 25, D.C.



Park Historian Conducting Lafayette Park Tour

For additional copies of the *Outdoor Program 1960*, or
for further information, call:

The Park Naturalist, REpublic 7-1820, Ext. 2557
or

The Park Historian, REpublic 7-1820, Ext. 2565

Saturdays, Sundays, and holidays call

The Park Police, REpublic 7-1820, Ext. 3161

