

29.65:959

Clemson University



3 1604 019 680 380

OUTDOOR PROGRAM 1959



NATIONAL CAPITAL PARKS



Visitors Enjoying Great Falls of the Potomac

Cover: Wood Thrush. *This attractive and melodious songster adds a distinctive atmosphere to many woodland areas, especially in the evening. Photo by Roger Tory Peterson.*

MISSION 66

Mission 66 is a program designed to be completed by 1966 which will assure the maximum protection of the scenic, scientific, wilderness, and historic resources of the National Park System in such ways and by such means as will make them available for the use and enjoyment of present and future generations.

UNITED STATES DEPARTMENT OF THE INTERIOR

NATIONAL PARK SERVICE

OUTDOOR PROGRAM

1959



This 19th annual edition of the OUTDOOR PROGRAM presents a schedule of events from April through November in the National Capital Parks, a unit of the National Park Service, United States Department of the Interior

Contents

| | Page |
|---|------|
| Schedule of Events | 1 |
| Supplemental Information | |
| Barge Trips—C & O Canal | 44 |
| Bird Walks | 45 |
| Boat Trips—Potomac & Anacostia Rivers | 45 |
| Custis-Lee Mansion | 45 |
| Evening Adventures | 45 |
| Exploring the Sky | 46 |
| Fort Washington, Md | 46 |
| Hikes | 46 |
| Historical Tours | 46 |
| Historical Tours With Cameras | 46 |
| Kenilworth Aquatic Gardens | 48 |
| Rock Creek Nature Center | 48 |
| Sylvan Theatre | 48 |
| Theodore Roosevelt Island | 49 |
| Walks | 49 |
| Watergate—Concerts | 49 |
| Related Information | |
| Courses for Children or Adults | 51 |
| Conservation Roundup | 51 |
| Field Leadership Course in Bird Study | 51 |
| Junior Naturalist Training Course | 51 |
| Training Course in Outdoor Leadership | 51 |
| Day Camps | 51 |
| Great Falls Museum | 51 |
| Jefferson Memorial | 52 |
| Lincoln Memorial | 52 |
| Lincoln Museum & House Where Lincoln Died | 52 |
| Pierce Mill | 52 |
| School Assembly Talks | 52 |
| Spring Hikes | 53 |
| Washington Monument | 53 |
| Carter Barron Amphitheater | 54 |
| Special Events | 55 |

NOTE: *It is important to read the "Supplemental Information" for all activities, but especially for Sylvan Theatre, Evening Adventures, Boat Trips, and Barge Trips.*

APRIL EVENTS

April 5, Sunday:

SPRING FLOWERS 2 & 4 p.m. Walks conducted by a Park Naturalist to see wild and cultivated flowers in Dumbarton Oaks Park. Meet at Avon Pl. & R St., NW.

April 7, Tuesday:

CHERRY BLOSSOM FESTIVAL 3 p.m. Official opening ceremony at Japanese Lantern in West Potomac Park. See your newspaper for program and other related information.

April 11, Saturday:

CHERRY BLOSSOM FESTIVAL 2 p.m. Pageant at Jefferson Memorial. See your newspaper for details.

CHERRY BLOSSOM FESTIVAL 7:30 p.m. Parade on K Street from 9th to 17th Street, NW.

April 12, Sunday:

BIRD WALK 9 a.m. Dumbarton Oaks Park. See April 5 entry.

FLOWER WALKS 11 a.m., 1:30 & 3 p.m. Conducted tours through Dumbarton Oaks Park.

BEAR ISLAND BEAUTY 2 until 6 p.m. Meet in parking area at Cropley, Md., (near Anglers Inn) on C & O Canal. Walk around Bear Island, one of the most scenic areas near D.C. Wear rugged hiking shoes. No public transportation available.

CHERRY BLOSSOM FESTIVAL 2 p.m. Repeat of April 11 pageant at the Jefferson Memorial. See your newspaper for details.

April 19, Sunday:

BIRD WALK 9 a.m. C & O Canal.. Meet at MacArthur Blvd. & Cornell Ave., Glen Echo, Md. (Stop 39, Cabin John street-car line.)

April 19, Sunday:

FLOWER WALKS 11 a.m., 1:30 & 3 p.m. Conducted tours through Dumbarton Oaks Park. Meet at Avon Pl. & R Sts., NW.

FORMAL GARDENS 2 p.m. Conducted tour through a formal park of Italian Renaissance charm. Azaleas and other shrubs are featured. Meet at 16th & Euclid Sts., NW., Meridian Hill Park.

"HOUSE OF DECISION" 2:30 p.m. Historical tour of "Arlington" which was the home of General Robert E. Lee prior to the Civil War. Meet at main entrance to Arlington National Cemetery. (Call KIng 9-7800, Ext. 38 for A. B. & W. bus schedule.)

Brady Photo of "Arlington House" During Civil War



April 19, Sunday:

NATURE'S VOICES 6:30 until 8:30 p.m. Hear a variety of voices as birds settle for the evening and toads and frogs begin their night's chorus. Bring picnic supper and drink. After supper there will be a walk along the C & O Canal. Meet at MacArthur Blvd. & Cornell Ave., Glen Echo, Md. (Stop 39, Cabin John streetcar line).

April 26, Sunday:

SPRINGTIME ON BEAR ISLAND 9:30 a.m. until 4 p.m. General nature walk on Bear Island. Bring picnic lunch and water. Wear sturdy hiking shoes. Meet in parking area at Cropley, Md. (near Anglers Inn) on C & O Canal. No public transportation available.

NATURE ADVENTURE 2 p.m. Follow a park naturalist on a general nature walk in upper Rock Creek Park. Meet at 16th St. & Alaska Ave., NW.

"PLAN FOR PARKS" 2:30 p.m. Historical tour along the Mall as far as the National Gallery of Art and return. Review of the life of Ulysses S. Grant, General and President. Meet at Grant Memorial, 1st St. & Pennsylvania Ave., NW.

MAY EVENTS

May 2, Saturday:

BARGE TRIP 2 p.m. See *Supplemental Information*.

May 3, Sunday:

BIRD WALK 9 a.m. Meet at Stop 24 (Broad & 61st Sts., Brookmont, Md.) on Cabin John streetcar line for walk along C & O Canal towpath.

FLOWER WALK 10:30 a.m. Stop 24 (See Bird Walk.)

BARGE TRIP 2 p.m. See *Supplemental Information*.

NATURECRAFT SESSION 2 p.m. This activity is planned for adults and junior leaders who desire to learn how to make a fire-by-friction set similar to ones used by Indians before matches were invented. Bring knife and 20¢ for leather thong. Meet at Rock Creek Nature Center. See *Supplemental Information*.

May 9, Saturday:

BARGE TRIP 2 p.m. See *Supplemental Information*.

May 10, Sunday:

BIRD WALK 9 a.m. Meet in Parking Area, Kenilworth Aquatic Gardens. See *Supplemental Information*.

LIFE IN A POND 10:30 a.m. Kenilworth Aquatic Gardens.

BARGE TRIP 2 p.m. See *Supplemental Information*.

NATURECRAFT SESSION 2 p.m. Learn to use honeysuckle vine in basketry. Primarily for youth leaders. Meet at Rock Creek Nature Center. See *Supplemental Information*.

“THE UNION MUST BE PRESERVED” 2:30 p.m. History of Lincoln Memorial, Ericsson Memorial, Arlington Memorial Bridge, the Equestrian Statues, Roosevelt Island, and buildings along Constitution Ave. Meet under the inscription of Gettysburg Address in the Lincoln Memorial.



Pennsylvania Avenue—Scene of “The Passing Parade”

May 16, Saturday:

BARGE TRIP 2 p.m. See *Supplemental Information*.

May 17, Sunday:

BIRD WALK 9 a.m. Theodore Roosevelt Island. Ferry operates 9 a.m. until 4:30 p.m. today. See *Supplemental Information*.

WILDFLOWERS 11 a.m. & 2 p.m. Yellow irises on Theodore Roosevelt Island present one of the finest wildflower displays of the Washington, D.C., area. See *Supplemental Information*.

BARGE TRIP 2 p.m. See *Supplemental Information*.

NATURECRAFT SESSION 2 p.m. Learn to use native clay in modeling. Meet at Rock Creek Nature Center. See *Supplementary Information*.

May 17, Sunday:

EXPLORING AND PHOTOGRAPHING THE SKY. 9 p.m.
Ft. Reno Park. The Moon is two days past first quarter.
Jupiter, Mars, and Venus should be visible. Bring a camera
if you wish to take pictures. See *Supplemental Information*.

May 23, Saturday:

BARGE TRIP 2 p.m. See *Supplemental Information*.

May 24, Sunday:

THEODORE ROOSEVELT ISLAND Nature walk, 2 p.m.;
campfire, 6:30 p.m.; animal stalk, 7:30 until 8:30 p.m. Ferry
runs from 1 until 5:30 p.m. and 6:30 until 9 p.m. See *Supple-
mental Information*.

BARGE TRIP 2 p.m. See *Supplemental Information*.

"THE PASSING PARADE" 2:30 p.m. History of the Avenue
from Treasury Building to Peace Monument and of past and
present buildings and events along the Avenue; memorials to
Gen. Sherman, A. R. Shepherd, Gen. Casimir Pulaski, and
Gen. W. S. Hancock. Meet at north entrance of Treasury
Building, Pa. Ave. at 15th St., NW.

MODEST MOSSES 3 p.m. Join a guest expert and learn
something about these very common and interesting small plants.
Meet at 16th & Whittier Sts., NW.

May 30, Saturday:

BEAR ISLAND GEOLOGY 9 a.m. until 12 noon. The re-
gion near Bear Island has some of the finest geological stories
of the Washington area. Learn to read these stories with a
Park Naturalist. Wear sturdy hiking shoes. Bring picnic lunch
and water. Meet in parking area at Cropley, Md., (near
Anglers Inn) on C & O Canal. Public transportation not
available.

THEODORE ROOSEVELT ISLAND 2 p.m. Join a Park
Naturalist on a nature walk along the trails of this unusual area.
See *Supplemental Information*.

BARGE TRIP 2 p.m. See *Supplemental Information*.

May 31, Sunday:

WATERLILIES 9:30 a.m. Kenilworth Aquatic Gardens. Go on a walk conducted by a Park Naturalist. See *Supplemental Information*.

ISLAND TRAILS 2 p.m. Explore Theodore Roosevelt Island with a Park Naturalist. See *Supplemental Information*.

BARGE TRIP 2 p.m. See *Supplemental Information*.

WOODLAND ADVENTURE 3 p.m. See remnants of an upland forest which once covered millions of acres in eastern North America. Meet in Rock Creek Park at Military Rd. & Oregon Ave., NW.

JUNE EVENTS

June 3, Wednesday:

BARGE TRIP 6:30 p.m. See *Supplemental Information*.

June 5, Friday:

SYLVAN THEATRE 8:30 p.m. *Square Dance Exhibition*, directed by Clair Young. 9 p.m. Youth leaders who have completed the National Capital Parks' Training Course in Outdoor Leadership will be presented certificates.

SYLVAN THEATRE LECTURE. 9:25 p.m. *As Maine Goes*, a color movie by Harrison F. Houghton, will take us on a tour of the Pine Tree State. Visit the coast at Boothbay Harbor, Rockport, Pemaquid, and Acadia National Park. Go inland to Rangeley, Mooselookmeguntic, Schoodic Lake, and other areas. Enjoy scenic views, fishing scenes, birds, deer, and wild flowers.

June 6, Saturday:

WATERLILIES 9:30 a.m. Kenilworth Aquatic Gardens. Walk around the pools on a trip conducted by the Park Naturalist. See *Supplemental Information*.

ISLAND TREES 2 p.m. With a Naturalist as guide learn some of the trees on Theodore Roosevelt Island. See *Supplemental Information*.

BARGE TRIP 2 p.m. See *Supplemental Information*.

CARDEROCK COOKOUT 4 until 9:30 p.m. Meet at MacArthur Blvd. & Cornell Ave., Glen Echo, Md. (Stop 39, Cabin John streetcar line). Walk about 3 miles each way on towpath. Bring food to cook wrapped in 2 layers of aluminum foil. No drinking water is available. Return at dusk and hear Nature's night sounds. For those who enjoy being different.

June 7, Sunday:

KENILWORTH AQUATIC GARDENS 9:30 a.m. Park Naturalist conducts walk. See *Supplemental Information*.

June 7, Sunday:

THEODORE ROOSEVELT ISLAND NATURE WALK. 2 p.m. See *Supplemental Information*.

BARGE TRIP 2 p.m. See *Supplemental Information*.

FLOOD PLAIN FOREST 3 p.m. Meet at Stop 20 on Cabin John streetcar line (Sherrier & Manning Pls., NW.) Learn about life in the lowland bordering the Potomac River.

WATERGATE 8:30 p.m. United States Marine Band. See *Supplemental Information*.

EXPLORING THE SKY 9 p.m. Ft. Reno Park. See the moons of Jupiter, Mars, and Venus through telescopes. Bring pictures taken May 17. See *Supplemental Information*.

June 9, Tuesday:

WATERGATE 8:30 p.m. United States Army Band. See *Supplemental Information*.

June 10, Wednesday:

BARGE TRIP 6:30 p.m. See *Supplemental Information*.

June 11, Thursday:

WATERGATE 8:30 p.m. United States Navy Band. See *Supplemental Information*.

June 12, Friday:

SYLVAN THEATRE 8:45 p.m. *Dance Exhibition*, by the Amor Sirvent Spanish Flamenco Troupe, a group of young ladies in authentic Spanish Costume.

SYLVAN THEATRE LECTURE 9:15 p.m. *Denmark, a Charming and Historic Land*, is featured on color slides by Dr. Henry L. Darner, who is well known to Sylvan Theatre audiences.

WATERGATE 8:30 p.m. United States Air Force Symphony. See *Supplemental Information*.

June 13, Saturday:

KENILWORTH WATERLILIES 9:30 a.m. Enjoy the hardy waterlilies on a guided walk. See *Supplemental Information*.

"WASHINGTON FROM THE WATER" 10 a.m. until 12 noon. A historical tour by boat of Potomac landmarks. Hains



Waterlilies in bloom at Kenilworth Aquatic Gardens

June 13, Saturday:

Point and its development, Tidal Basin outlet, Georgetown, Three Sisters Island, and the Pentagon Lagoon. See *Supplemental Information* for information concerning reservations, fare, and meeting place.

BARGE TRIP 2 p.m. See *Supplemental Information*.

THEODORE ROOSEVELT ISLAND WALK 2 p.m. See *Supplemental Information*.

SALAMANDERS & SNAKES 3 p.m. Learn where and how these secretive creatures live. A few live specimens will be on hand just in case our hunt is not rewarding. Meet at 16th & Geranium Sts., NW.

June 14, Sunday:

KENILWORTH AQUATIC GARDENS 9:30 a.m. Learn about the hardy waterlilies on a walk conducted by a Park Naturalist. See *Supplemental Information*.

THEODORE ROOSEVELT ISLAND 2 p.m. Explore this wild island with a Park Naturalist. See *Supplemental Information*.

BARGE TRIP 2 p.m. See *Supplemental Information*.

"FROM THE HALLS OF MONTEZUMA" (Iwo Jima) 2:30 p.m. History of conception and erection of the Marine Corps War Memorial. Story of the raising of the Stars and Stripes on Mount Suribachi; the memorial site and its relationship to the National Capital. Meet at Marine Corps War Memorial, Arlington Ridge Rd. & Arlington Blvd., Arlington, Va. Call Jackson 8-4000 for WV&M bus schedule.

LICHEN WALK 3 p.m. A guest expert will introduce us to some of Nature's primitive pioneer plants. Meet at 16th St. & Alaska Ave. NW.

WATERGATE 8:30 p.m. United States Marine Band. See *Supplemental Information*.

June 16, Tuesday:

WATERGATE 8:30 p.m. United States Army Band. See *Supplemental Information*.

June 17, Wednesday:

BARGE TRIP 6:30 p.m. See *Supplemental Information*.

June 18, Thursday:

WATERGATE 8:30 p.m. United States Navy Band. See *Supplemental Information*.

June 19, Friday:

SYLVAN THEATRE 8:45 p.m. *Community Singing*, led by Maurice Sullivan.

June 19, Friday:

SYLVAN THEATRE LECTURE 9:15 p.m. Outstanding color slides, *Rambling Through the Seasons with Wildflowers*, offers much to novice and advanced flower students. Mr. George Gruber of Camp Hill, Pennsylvania, has spent many days developing this excellent talk. Don't miss it!

WATERGATE 8:30 p.m. United States Air Force Symphony. See *Supplemental Information*.

June 20, Saturday:

WATERLILIES IN ABUNDANCE 9:30 a.m. Kenilworth Aquatic Gardens are world famous. Join a Park Naturalist and enjoy acres of hardy lilies before the season is too far gone. See *Supplemental Information*.

ISLAND ADVENTURE 2 p.m. Explore Theodore Roosevelt Island with a Park Naturalist. See *Supplemental Information*.

BARGE TRIP 2 p.m. See *Supplemental Information*.

MYSTERY WALK 3 p.m. Meet a Park Naturalist at Stop 24, Cabin John streetcar line (Broad & 61st Sts., Brookmont, Md.).

June 21, Sunday:

BIRD WALK 8 a.m. Go "birding" with a Park Naturalist along the C & O Canal. Meet at Stop 24, Cabin John streetcar line, Brookmont, Md.

KENILWORTH WATERLILIES 9:30 a.m. Accompany a Park Naturalist on a conducted walk. See *Supplemental Information*.

THEODORE ROOSEVELT ISLAND 2 p.m. Learn about Nature on a conducted walk by a Park Naturalist. See *Supplemental Information*.

BARGE TRIP 2 p.m. See *Supplemental Information*.

GEOLOGY WALK 3 p.m. Join a Park Naturalist to learn something of geological processes and history of this region. Meet at Harvard St. entrance to the National Zoological Park.

WATERGATE 8:30 p.m. United States Marine Band. See *Supplemental Information*.

June 23, Tuesday:

WATERGATE 8:30 p.m. United States Army Band. See *Supplemental Information*.

FUN WITH NATURE: An Evening Adventure 7 p.m.
Theme: leaf printing methods and techniques for the hobbyist.
Meet Park Naturalists at the Rock Creek Trail Center on Beach Drive near Military Road, NW. See *Supplemental Information*.

June 24, Wednesday:

BARGE TRIP 6:30 p.m. See *Supplemental Information*.

June 25, Thursday:

WATERGATE 8:30 p.m. United States Navy Band. See *Supplemental Information*.

"OUR MR. SUN": An Evening Adventure 9 p.m. This brilliant color film depicts the dependence of all earth life upon the sun and tells many of the scientific facts man has discovered about this planet. Meet at the *Naturevan* (near Joan of Arc statue) in Meridian Hill Park, 16th & Euclid Sts., NW. See *Supplemental Information*.

June 26, Friday:

SYLVAN THEATRE 8:45 p.m. The *Justin Laurie Singers* always give a varied and interesting program.

SYLVAN THEATRE LECTURE 9:15 p.m. Mr. Paul Ehrlich, well-known photographic expert, will present *Mexican Impressions*, a slide talk covering a wide range of territory and subjects. Colorful costumes, gay folk dances, distinctive architecture, busy market places, our neighbors at work and play are features of the program.

WATERGATE 8:30 p.m. United States Air Force Symphony. See *Supplemental Information*.

June 27, Saturday:

KENILWORTH BIRD WALK 8 a.m. See *Supplemental Information*.

KENILWORTH WATERLILY WALK 9:30 a.m. See *Supplemental Information*.

June 27, Saturday:

BARGE TRIP 2 p.m. See *Supplemental Information*.

THEODORE ROOSEVELT ISLAND WALKS 2 & 4 p.m.
Ferry runs from 1 until 5:30 p.m. See *Supplemental Information*.

MUSHROOM WALK 3 p.m. A guest leader will introduce us to many interesting fungi. Meet at Rock Creek Nature Center. See *Supplemental Information*.

THEODORE ROOSEVELT ISLAND CAMPFIRE AND ANIMAL STALK 7 until 9 p.m. Ferry runs from 6:30 until 9 p.m. See *Supplemental Information*.

June 28, Sunday:

WATERLILIES & POND LIFE 9:30 a.m. On a conducted walk you will learn about the introduced and native plants and as much animal life as can be found at Kenilworth Aquatic Gardens. See *Supplemental Information*.

INDIANS ON AN ISLAND 2 p.m. On a walk with a Park Naturalist learn what plants Indians would have used and how they might have lived on Theodore Roosevelt Island. See *Supplemental Information*.

BARGE TRIP 2 p.m. See *Supplemental Information*.

"CASCADES & LILIES" 2:30 p.m. The story of Meridian Hill, Washington's only formal Park, its historical and geographical features, first site of Joaquin Miller cabin, park development and landscape treatment, memorials to James Buchanan, Dante, Joan of Arc, and La Serenity. Meet at 16th & Euclid Sts., NW.

LAFAYETTE PARK TREES & SHRUBS 3 p.m. Become acquainted with many native American and foreign trees and shrubs. Meet at 16th & H Sts., NW.

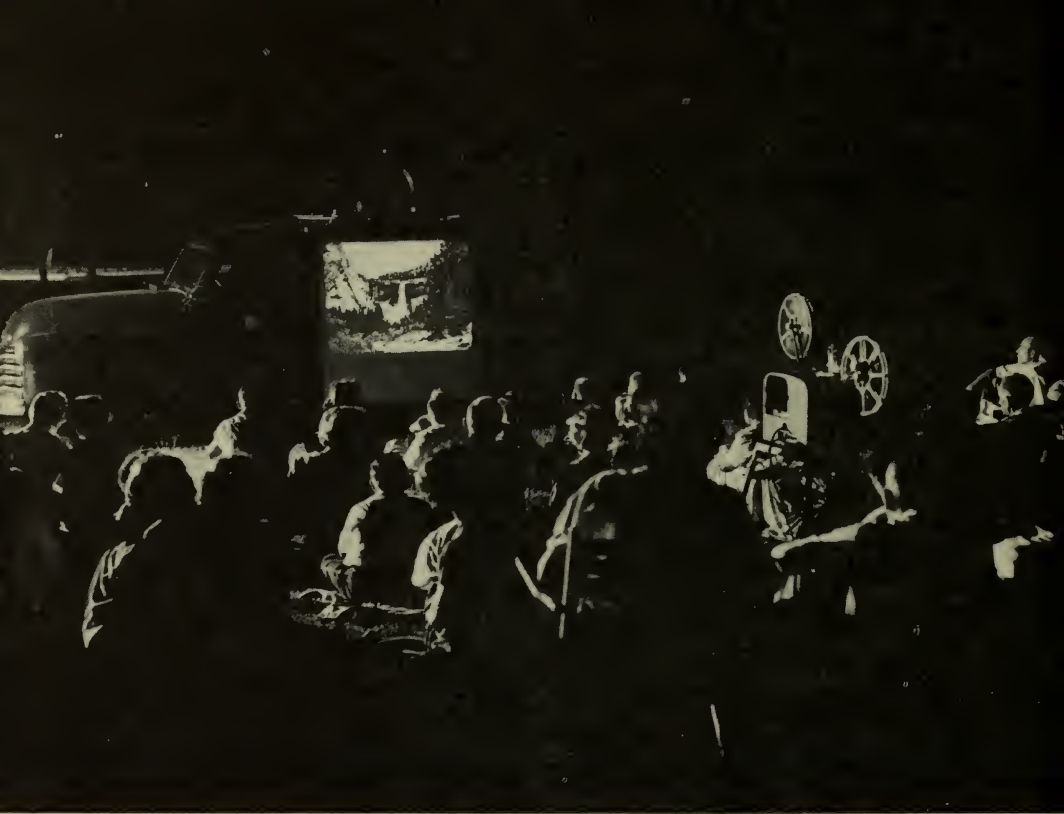
WATERGATE 8:30 p.m. United States Marine Band. See *Supplemental Information*.

EXPLORING AND PHOTOGRAPHING THE SKY 9 p.m.
Ft. Reno Park. Jupiter, the rings of Saturn, and Venus may be seen through telescopes, weather permitting. Bring a camera if you wish to take pictures. See *Supplemental Information*.

June 30, Tuesday:

WATERGATE 8:30 p.m. United States Army Band. See *Supplemental Information*.

"WATER BIRDS": An Evening Adventure 9 p.m. A Park Naturalist will point out identifying characteristics and discuss habits of waterfowl common to the Washington region preceding a showing of an excellent, all-color film. Meet at the *Naturevan* in Montrose Park, R St. and Avon Pl., NW., See *Supplemental Information*.



Evening Adventure program

JULY EVENTS

July 1, Wednesday:

BARGE TRIP 6:30 p.m. See *Supplemental Information*.

July 2, Thursday:

WATERGATE 8:30 p.m. United States Navy Band. See *Supplemental Information*.

NATURE'S SECRETS: An Evening Adventure 9 p.m.
Through the patience of the movie photographer and the brilliance of color film, we will witness many of Nature's secrets seldom observed by man. Meet at the *Naturevan* in Lincoln Park, East Capitol & 12th Sts. See *Supplemental Information*.

July 3, Friday:

SYLVAN THEATRE No program.

WATERGATE 8:30 p.m. United States Air Force Symphony.
See *Supplemental Information*.

July 4, Saturday:

WATERLILIES 9:30 a.m. Tropical lilies at Kenilworth Aquatic Gardens should be starting to bloom. See *Supplemental Information*.

ISLAND DISCOVERY 2 p.m. A Park Naturalist explains features of interest along Theodore Roosevelt Island trails. See *Supplemental Information*.

BARGE TRIP 2 p.m. See *Supplemental Information*.

INDEPENDENCE DAY CELEBRATION See your newspaper for details.

July 5, Sunday:

WATERLILIES 9:30 a.m. Walk conducted around the pools at Kenilworth Aquatic Gardens. See *Supplemental Information*.

THEODORE ROOSEVELT ISLAND WALK 2 p.m. See *Supplemental Information*.

BARGE TRIP 2 p.m. See *Supplemental Information*.

JEFFERSON MEMORIAL HISTORICAL TOUR 2:30 p.m.
History of the Memorial and the statue of Jefferson; the life of Jefferson; walk under the Japanese Cherry trees around the Tidal Basin to the Dutch Carillon. Meet in front of the statue of Jefferson. Ample parking.

WATERGATE 8:30 p.m. United States Marine Band. See *Supplemental Information*.

July 7, Tuesday:

FUN WITH NATURE: An Evening Adventure 7 p.m.
Theme: native clay modeling for the hobbyist. Meet at the Rock Creek Trail Center on Beach Dr. near Military Road, NW. See *Supplemental Information*.

WATERGATE 8:30 p.m. United States Army Band. See *Supplemental Information*.

July 8, Wednesday:

BARGE TRIP 6:30 p.m. See *Supplemental Information*.

July 9, Thursday:

WATERGATE 8:30 p.m. United States Navy Band. See *Supplemental Information*.

WASHINGTON LANDSCAPE: An Evening Adventure 9 p.m. A Park Naturalist will describe the earth forces which molded the Washington landscape of today, and will show a motion picture dealing with the history of the earth and the first living creatures to inhabit it. Meet at the *Naturevan* in the picnic area on Hains Point, East Potomac Park. See *Supplemental Information*.

July 10, Friday:

WATERGATE 8:30 p.m. United States Air Force Symphony. See *Supplemental Information*.

SYLVAN THEATRE 8:45 p.m. *The Overtones*, a mixed chorus under the direction of Mrs. Romaldo de Veau, will present a varied program.

SYLVAN THEATRE LECTURE 9:15 p.m. Visit a mysterious and faraway land. Like surprises? Come and have a pleasant one.

July 11, Saturday:

KENILWORTH AQUATIC GARDENS WALK 9:30 a.m. See *Supplemental Information*.

"PHOTOGRAPH SHADOWS OF HISTORY" 10 a.m. Meet with historian at entrance to Fort Washington to take pictures of pre-selected views of historic and artistic interest. Professional photographs with captions will be available for study. Each must bring his own equipment. See *Supplemental Information* for driving directions.

THEODORE ROOSEVELT ISLAND WALKS 2, 4, & 7 p.m. Ferry will operate from 1 until 5:30 p.m. and from 6:30 until 9 p.m. Campfire at 8 p.m. See *Supplemental Information*.

BARGE TRIP 2 p.m. See *Supplemental Information*.

July 11, Saturday:

LINCOLN'S FRONT YARD 3 p.m. A Park Naturalist will conduct a nature walk near the Lincoln Memorial in West Potomac Park to learn some of the trees and shrubs planted there. Meet near the west end of the Reflecting Pool across from Lincoln Memorial.

July 12, Sunday:

ANCIÉNT LOTUSES 9:30 a.m. These lotuses grew from seed which lay dormant in a Chinese sandbank about 1,000 years. See these rare plants in flower at Kenilworth Aquatic Gardens. See *Supplemental Information*.

THEODORE ROOSEVELT ISLAND 2 p.m. See *Supplemental Information*.

BARGE TRIP 2 p.m. See *Supplemental Information*.

FORT STEVENS HISTORICAL TOUR 2:30 p.m. The only restored fortification in Civil War defenses of Washington; story of the Confederate raid on Washington and Battle of Fort Stevens, July 11-12, 1864; visit the smallest National Cemetery in the United States, where 40 of the Union dead are buried. Meet at Fort Stevens, Rittenhouse St. between Georgia Ave. & 13th St., NW.

NATURE WALK 3 p.m. Meet at Rock Creek Trail Center on Beach Dr. near Military Rd.

WATERGATE 8:30 p.m. United States Marine Band. See *Supplemental Information*.

July 14, Tuesday:

WATERGATE 8:30 p.m. United States Army Band. See *Supplemental Information*.

MOUNTAIN TO SEASHORE: An Evening Adventure 8:45 p.m. Color films will contrast the rugged mountain scenery of Glacier National Park with the flat subtropical wilderness of Everglades National Park. Meet at the *Naturevan* (near Joan of Arc statue) in Meridan Hill Park, 16th & Euclid Sts., NW. See *Supplemental Information*.

July 15, Wednesday:

BARGE TRIP 6:30 p.m. See *Supplemental Information*.

July 16, Thursday:

FUN WITH NATURE: An Evening Adventure 7 p.m.
Theme: plaster casting for the hobbyist. Meet at the Rock Creek Trail Center on Beach Dr. near Military Rd., NW. See *Supplemental Information*.

WATERGATE 8:30 p.m. United States Navy Band. See *Supplemental Information*.

July 17, Friday:

SYLVAN THEATRE 8:30 p.m. The Schuhplatterverein Washingtonia under the leadership of Dave Rosenberg and Lorenz Benedikt will present a program of *Folk Dances*.

SYLVAN THEATRE LECTURE 9 p.m. In observance of the anniversary of the establishment of National Capital Parks, Superintendent Harry T. Thompson will show pictures of and talk about *Your National Capital Parks*.

WATERGATE 8:30 p.m. United States Air Force Symphony. See *Supplemental Information*.

July 18, Saturday:

LOTUSES & LILIES 9:30 a.m. Come early to Kenilworth Aquatic Gardens before the tropical lilies close for the day. See *Supplemental Information*.

STORIES IN STONE AND THE POTOMAC 10 a.m. See and learn about the effects of running water—a powerful erosive force. Meet at Stop 20 on Cabin John streetcar line (Sherrier & Manning Pls., NW.).

BARGE TRIP 2 p.m. See *Supplemental Information*.

THEODORE ROOSEVELT ISLAND WALKS 2 & 4 p.m.
Ferry runs from 1 until 5:30 p.m. See *Supplemental Information*.

ISLAND CAMPFIRE AND ANIMAL STALK 7 until 9 p.m.
Ferry operates from 6:30 until 9 p.m. See *Supplemental Information*.

July 19, Sunday:

LOTUSES AND LILIES 9:30 a.m. Kenilworth Aquatic Gardens. See *Supplemental Information*.

THEODORE ROOSEVELT ISLAND WALK 2 p.m. See *Supplemental Information*.

BARGE TRIP 2 p.m. See *Supplemental Information*.

WATERGATE 8:30 p.m. United States Marine Band. See *Supplemental Information*.

July 21, Tuesday:

POTOMAC INDIANS: An Evening Adventure 8:15 p.m. A short walk to search for wild plants used by the Indians will be followed by an illustrated talk about the Indians of this region. Meet at the *Naturevan* in Rock Creek Park, Picnic Grove No. 7 (near Miller cabin, 1/4 mile north of Military Rd. & Beach Dr., NW.). See *Supplemental Information*.

WATERGATE 8:30 p.m. United States Army Band. See *Supplemental Information*.

July 22, Wednesday:

BARGE TRIP 6:30 p.m. See *Supplemental Information*.

July 23, Thursday:

WATERGATE 8:30 p.m. United States Navy Band. See *Supplemental Information*.

SOUNDS OF THE NIGHT: An Evening Adventure 8:45 p.m. Amazing songs and sounds of nature highlight the evening. Meet at *Naturevan* in Montrose Park, R St. & Avon Pl., NW. See *Supplemental Information*.

July 24, Friday:

SYLVAN THEATRE 8:30 p.m. The St. Andrews Society of Washington, D.C., will present the *Scottish Pipe Band and Dancers*.

SYLVAN THEATRE LECTURE 9 p.m. *Panorama of a Peninsula* by Dr. Charles Stine of Baltimore, Md., will be a color slide talk on plant and animal life at the Delmarva Peninsula.

WATERGATE 8:30 p.m. United States Air Force Symphony. See *Supplemental Information*.

July 25, Saturday:

KENILWORTH AQUATIC GARDENS 9:30 a.m. Join the Park Naturalist to learn about the lilies and the lotuses. See *Supplemental Information*.

"WASHINGTON FROM THE WATER" 10 a.m. until 12 noon. View historical landmarks: Fort McNair, Naval Gun Factory, Anacostia Bridge (Old Navy Yard Bridge), Naval Air Station, Bolling Air Force Base, early Indian settlements, Washington National Airport, and Arlington. See *Supplemental Information* for information concerning reservations, fare, and meeting place.

ISLAND ADVENTURE 2 p.m. Visit wild Theodore Roosevelt Island with a Park Naturalist. See *Supplemental Information*.

BARGE TRIP 2 p.m. See *Supplemental Information*.

FERN WALK 3 p.m. A guest leader will show how to identify native ferns in Rock Creek Park. Meet at 16th & Whittier Sts., NW.

EXPLORING THE SKY 9 p.m. Ft. Reno Park. View the moons of Jupiter, the rings of Saturn, galaxies, and multiple stars through a telescope. Also, learn some of the summer constellations. Bring photographs taken June 28. See *Supplemental Information*.

POWERBOAT REGATTA Potomac River. See your newspaper for details.

July 26, Sunday:

KENILWORTH AQUATIC GARDENS 9:30 a.m. Lotuses and lilies will be featured. See *Supplemental Information*.

THEODORE ROOSEVELT ISLAND WALK 2 p.m. See *Supplemental Information*.

BARGE TRIP 2 p.m. See *Supplemental Information*.

"AND SO THEY MOVED WEST" 2:30 p.m. Brief history of the C & O Canal and its importance to Georgetown, stories of canal life and operation, canal locks 1 to 4, old Wisconsin Avenue Bridge and site of unloading wharves, Alexandria Aqueduct,

July 26, Sunday:

Foxall Cannon Foundry, and Foundry Branch Tunnel. Meet at Lock 4, one block south of Thomas Jefferson & M Sts., NW. See *Supplemental Information*.

PARK TREES 3 p.m. Montrose Park has a large variety of trees. On a walk conducted by a Park Naturalist, learn to identify some of them. Meet at R St. & Avon Pl., NW.

POWERBOAT REGATTA Potomac River. See newspapers for details.

WATERGATE 8:30 p.m. United States Marine Band. See *Supplemental Information*.

C and O Canal—A Route to the West



July 28, Tuesday:

WATERGATE 8:30 p.m. United States Army Band. See *Supplemental Information*.

“UNCHAINED GODDESS”: An Evening Adventure 8:45 p.m. What man has learned about weather and the development of storms is effectively illustrated in this beautiful color film. Meet at the *Naturevan* in Lincoln Park, East Capitol & 12th Sts. See *Supplemental Information*.

July 29, Wednesday:

BARGE TRIP 6:30 p.m. See *Supplemental Information*.

July 30, Thursday:

FUN WITH NATURE: An Evening Adventure 7 p.m. Theme: the creative hobby of making *doodads* from Nature's storehouse of material. Meet at the Rock Creek Trail Center on Beach Dr. near Military Rd., NW. See *Supplemental Information*.

WATERGATE 8:30 p.m. United States Navy Band. See *Supplemental information*.

July 31, Friday:

SYLVAN THEATRE 8:30 p.m. *Army Chorus*, under the direction of Captain Samuel Loboda, will present a variety of songs.

SYLVAN THEATRE LECTURE 9 p.m. *Ice, Birds, and Men* is a movie of the Antarctic to be shown by Karl Eklund, Wilkes Station Scientific Leader, I.G.Y., 1957-58. Unusual color movies of Emperor and Adelie Penguins, Giant Fulmars, Snow Petrels, Skuas, Seals, and other Antarctic wildlife will be shown along with activities of the hardy men at Wilkes Station.

WATERGATE 8:30 p.m. United States Air Force Symphony. See *Supplemental Information*.

AUGUST EVENTS

August 1, Saturday:

TROPICAL WATERLILIES 9:30 a.m. Come to Kenilworth Aquatic Gardens for guided walk. See *Supplemental Information*.

BIOLOGY & GEOLOGY FROM A BOAT 10 a.m. until 12 noon. Naturalist points out geological and natural features, explaining the influence of the Potomac River and how geology has affected the Nation's Capital. See *Supplemental Information* for information concerning reservations, fare, and meeting place.

THEODORE ROOSEVELT ISLAND WALK 2 p.m. See *Supplemental Information*.

BARGE TRIP 2 p.m. See *Supplemental Information*.

August 2, Sunday:

KENILWORTH AQUATIC GARDENS 9:30 a.m. See *Supplemental Information*.

THEODORE ROOSEVELT ISLAND WALK 2 p.m. See *Supplemental Information*.

BARGE TRIP 2 p.m. See *Supplemental Information*.

WATERGATE 8:30 p.m. United States Marine Band. See *Supplemental Information*.

August 4, Tuesday:

WATERGATE 8:30 p.m. United States Army Band. See *Supplemental Information*.

"COTTONTAIL": An Evening Adventure 8:45 p.m. The life of the cottontail and other interesting natural history will be revealed through an excellent color film. Meet at the *Naturevan* in the picnic area on Hains Point, East Potomac Park. See *Supplemental Information*.

August 5, Wednesday:

BARGE TRIP 6:30 p.m. See *Supplemental Information*.

August 6, Thursday:

"HERPTILES": An Evening Adventure 8 p.m. Join the Park Naturalists on a short walk to search out hiding places of reptiles and amphibians. Live specimens will be on hand to supplement those found on the walk. The evening will be climaxed with a color film on reptiles. Meet at the *Naturevan* (near the clubhouse adjoining the old Parade Grounds) Fort Hunt, Va., off Mt. Vernon Memorial Highway about 6½ miles south of Alexandria. No public transportation. Shelter available in case of rain. See *Supplemental Information*.

WATERGATE 8:30 p.m. United States Navy Band. See *Supplemental Information*.

August 7, Friday:

SYLVAN THEATRE 8:15 p.m. A Washington Folk Dance Group, under the sponsorship of the D.C. Recreation Department and leadership of Dave Rosenberg, will present *Folk Dances From Many Lands*.

SYLVAN THEATRE LECTURE 9 p.m. *The Forty-ninth State* will be featured with color slides by Mr. Floyd Threet, who has lived there and flown over a great deal of it. Modern cities contrasted with great wilderness areas; fishing and mining scenes; farming areas; the Aurora and many other subjects are featured.

WATERGATE 8:30 p.m. United States Air Force Symphony. See *Supplemental Information*.

August 8, Saturday:

TROPICAL WATERLILIES 9:30 a.m. Kenilworth Aquatic Gardens. See *Supplemental Information*.

GEOLOGY WALK 10 a.m. Geology of the District of Columbia will be stressed. Meet at Harvard St. entrance to the Zoo.

THEODORE ROOSEVELT ISLAND WALK 2 p.m. See *Supplemental Information*.

BARGE TRIP 2 p.m. See *Supplemental Information*.

VARIETY OF TREES 3 p.m. Native trees and those introduced from other countries will be seen. Meet in Lafayette Park, 16th & H Sts., NW.

August 9, Sunday:

KENILWORTH LILIES 9:30 a.m. Kenilworth Aquatic Gardens. *See Supplemental Information.*

THEODORE ROOSEVELT ISLAND WALK 2 p.m. *See Supplemental Information.*

BARGE TRIP 2 p.m. *See Supplemental Information.*

"THE OPEN SPACES" 2:30 p.m. History of Pierce Mill and explanation of its operation, the story of the establishment of Rock Creek Park and its importance to the residents of the City of Washington, a walk through the park to the Jusserand Bench and return. Other points of historical interest will be mentioned on the tour. Meet at Pierce Mill (Beach Dr. & Tilden St., NW.).

WATERGATE 8:30 p.m. United States Marine Band. *See Supplemental Information.*

August 11, Tuesday:

FUN WITH NATURE: An Evening Adventure 7 p.m. Theme: nature trail labeling techniques. Meet at Rock Creek Nature Center. *See Supplemental Information.*

WATERGATE 8:30 p.m. United States Army Band. *See Supplemental Information.*

August 12, Wednesday:

BARGE TRIP 6:30 p.m. *See Supplemental Information.*

August 13, Thursday:

WATERGATE 8:30 p.m. United States Navy Band. *See Supplemental Information.*

AN AMERICAN HERITAGE: An Evening Adventure 8:45 p.m. Colorful films will depict the story of the National Park System and its "new look" through *Mission 66*. Meet at the *Naturevan* in Montrose Park, R St. & Avon Pl., NW. *See Supplemental Information.*

August 14, Friday:

SYLVAN THEATRE 8 p.m. *The Singing Capital Chorus*, Francis H. Townsend and Lewis Sims, Directors, and *Barbershop Quartets* of the D.C. Chapter of S.P.E.B.S.Q.S.A. will sing.

August 14, Friday:

SYLVAN THEATRE LECTURE 8:30 p.m. Mr. A. H. Lochner will present his excellent color movie, *Vanishing America*, a story of old railroads, covered bridges, frontier and pioneer life with water power, horse power, oxen power and other features of early American life.

WATERGATE 8:30 p.m. United States Air Force Symphony.
See Supplemental Information.

August 15, Saturday:

KENILWORTH AQUATIC GARDENS WALK 9:30 a.m.
See Supplemental Information.

THEODORE ROOSEVELT ISLAND WALK 2 p.m. See
Supplemental Information.

BARGE TRIP 2 p.m. *See Supplemental Information.*

August 16, Sunday:

KENILWORTH AQUATIC GARDENS WALK 9:30 a.m.
See Supplemental Information.

THEODORE ROOSEVELT ISLAND WALK 2 p.m. See
Supplemental Information.

BARGE TRIP 2 p.m. *See Supplemental Information.*

ROWING RACES, PRESIDENT'S CUP REGATTA Potomac River. See your newspaper for details.

WATERGATE 8:30 p.m. United States Marine Band. See
Supplemental Information.

August 18, Tuesday:

FUN WITH NATURE: An Evening Adventure 7 p.m. Theme: insect collecting for the hobbyist. Meet Park Naturalists at the clubhouse adjoining the old Parade Grounds, Fort Hunt, Va., off Mt. Vernon Memorial Highway about 6½ miles south of Alexandria. No public transportation. Shelter available in case of rain. *See Supplemental Information.*

WATERGATE 8:30 p.m. United States Army Band. See
Supplemental Information.

August 19, Wednesday:

BARGE TRIP 6:30 p.m. *See Supplemental Information.*

August 20, Thursday:

NATIONAL PARKS: An Evening Adventure 8:30 p.m. We'll terminate the series of 1959 *evening adventures* with a program in recognition of the establishment of the National Park Service on August 25, 1916. Two fine films on the national parks will be shown at the *Naturevan* (near the Joan of Arc statue) in Meridian Hill Park, 16th & Euclid Sts., NW. See *Supplemental Information*.

WATERGATE 8:30 p.m. United States Navy Band. See *Supplemental Information*.

August 21, Friday:

SYLVAN THEATRE 8 p.m. *Community Singing* will be led by Mr. Donald Erskine with Miss Louise Murray at the piano.

SYLVAN THEATRE LECTURE 8:30 p.m. In observance of Founder's Day, commemorating the anniversary of the birth of the National Park Service, a member of the Director's staff will talk and show color pictures of *Your National Parks*.

WATERGATE 8:30 p.m. United States Air Force Symphony. See *Supplemental Information*.

August 22, Saturday:

WATERLILIES GALORE 9:30 a.m. Tropical waterlilies at Kenilworth Aquatic Gardens should be near their best. See *Supplemental Information*.

"WASHINGTON FROM THE WATER" 10 a.m. until 12 noon. A historical tour by boat of Potomac landmarks. Hains Point and its development, Tidal Basin outlet, Georgetown, Three Sisters Island, and the Pentagon Lagoon. See *Supplemental Information* for information concerning reservations, fare, and meeting place.

GEOLOGY WALK 10 a.m. Fort Totten Park. Find petrified wood and study coastal plain deposits. Meet at Hawaii Ave. & Allison St., NE.

THEODORE ROOSEVELT ISLAND WALK 2 p.m. See *Supplemental Information*.

BARGE TRIP 2 p.m. See *Supplemental Information*.

August 23, Sunday:

KENILWORTH WALK 9:30 a.m. Enjoy the tropical water-lilies at Kenilworth Aquatic Gardens. See *Supplemental Information*.

ISLAND WALK 2 p.m. Visit Theodore Roosevelt Island with a Naturalist. See *Supplement Information*.

BARGE TRIP 2 p.m. See *Supplemental Information*.

FORT WASHINGTON, MD., HISTORICAL TOUR 2:30 p.m. Approach Fort Washington from the old wharf area. Tour the site of the early fort which burned in 1814 and then the Fort constructed between 1816-1824. Meet at the U.S. Coast Guard bell tower at edge of river. See *Supplemental Information* for driving instructions.

EXPLORING THE SKY 8:30 p.m. Ft. Reno Park. See multiple stars, clusters, galaxies, and nebulae through a telescope. In addition, learn some of the constellations. See *Supplemental Information*.

"Exploring the Sky" is Fascinating.



August 23, Sunday:

WATERGATE 8:30 p.m. United States Marine Band. See
Supplemental Information.

August 25, Tuesday:

WATERGATE 8:30 p.m. United States Army Band. See
Supplemental Information.

August 26, Wednesday:

BARGE TRIP 6:30 p.m. See *Supplemental Information.*

August 27, Thursday:

WATERGATE 8:30 p.m. United States Navy Band. See
Supplemental Information.

August 28, Friday:

SYLVAN THEATRE 8 p.m. Mr. Stephen H. Prussing will
direct the *New York Avenue Presbyterian Church Choir* in a
variety program.

SYLVAN THEATRE LECTURE 8:30 p.m. If you like
outstanding color movies of birds, don't miss Mr. Ralph Law-
rence's *Living Marsh and Shore*, a story of gulls, terns, rails,
sandpipers, herons, and other birds with turtles, flowers, crabs,
and starfish for added variety.

WATERGATE 8:30 p.m. United States Air Force Symphony.
See *Supplemental Information.*

August 29, Saturday:

KENILWORTH AQUATIC GARDENS WALK 9:30 a.m.
See *Supplemental Information.*

PIONEER PLANT USES 10 a.m. Meet at Rock Creek Trail
Center on Beach Dr. near Military Rd.

THEODORE ROOSEVELT ISLAND WALK 2 p.m. See
Supplemental Information.

BARGE TRIP 2 p.m. See *Supplemental Information.*

August 30, Sunday:

KENILWORTH AQUATIC GARDENS WALK 9:30 a.m.
See *Supplemental Information.*

August 30, Sunday:

ISLAND SANCTUARY 2 p.m. Learn some of the interesting plants and animals on Theodore Roosevelt Island. See *Supplemental Information*.

BARGE TRIP 2 p.m. See *Supplemental Information*.

CANOE RACES, PRESIDENT'S CUP REGATTA Potomac River. See your newspaper for details.

SEPTEMBER EVENTS

September 2, Wednesday:

BARGE TRIP 6:30 p.m. See *Supplemental Information*.

September 5, Saturday:

KENILWORTH AQUATIC GARDENS WALK 9:30 a.m.
See *Supplemental Information*.

ISLAND FLOWERS 2 p.m. Visit Theodore Roosevelt Island to learn some late summer flowers. See *Supplemental Information*.

BARGE TRIP 2 p.m. See *Supplemental Information*.

GEOLOGY FROM A FORT 3 p.m. See and learn about interesting land forms, fossils, and minerals in the vicinity of Fort Washington. Meet at entrance (sally port) to the old fort. For driving directions see *Supplemental Information*. No public transportation available.

September 6, Sunday:

MARSH LIFE 9:30 a.m. Cultivated and wild plants are well displayed at Kenilworth Aquatic Gardens. See *Supplemental Information*.

THEODORE ROOSEVELT ISLAND WALK 2 p.m. See *Supplemental Information*.

BARGE TRIP 2 p.m. See *Supplemental Information*.

POND LIFE 3 p.m. Learn about food chains and animal life in ponds at Kenilworth Aquatic Gardens. See *Supplemental Information*.

September 7, Monday:

BARGE TRIP 2 p.m. See *Supplemental Information*.

"MEET OUR FRIENDLY ALLIES" 2:30 p.m. Phases of national history as reflected by Lafayette Park; history of nearby homes and statues in park; stories about Randolph-Clay duel, Peggy O'Neal, St. John's Church, and the "Little White House."

September 7, Monday:

Life of Lafayette reviewed on this anniversary of his birth. Meet at Jackson Statue in center of Park.

September 9, Wednesday:

BARGE TRIP 6:30 p.m. See *Supplemental Information*.

September 12, Saturday:

KENILWORTH AQUATIC GARDENS WALK 9:30 a.m.
See *Supplemental Information*.

"WASHINGTON FROM THE WATER" 10 a.m. until 12 noon. View historical landmarks; Fort McNair, Naval Gun Factory, Anacostia Bridge (Old Navy Yard Bridge), Naval Air Station, Bolling Air Force Base, Early Indian settlements, Wash-

Park Historian Conducting Lafayette Park Tour.



September 12, Saturday:

ington National Airport, and Arlington. See *Supplemental Information* for information concerning reservations, fare, and meeting place.

THEODORE ROOSEVELT ISLAND WALK 2 p.m. See *Supplemental Information*.

BARGE TRIP 2 p.m. See *Supplemental Information*.

FERN WALK 3 p.m. A Park Naturalist will increase your appreciation for many kinds of ferns. Meet in Rock Creek Park at 16th & Whittier Sts., NW.

POWERBOAT RACES FOR PRESIDENT'S CUP REGATTA
Potomac River. See your newspaper for details.

September 13, Sunday:

KENILWORTH AQUATIC GARDENS WALK 9:30 a.m.
See *Supplemental Information*.

THEODORE ROOSEVELT ISLAND WALKS 2 & 4 p.m.
Ferry runs from 1 until 5:30 p.m. See *Supplemental Information*.

ISLAND CAMPFIRE & ANIMAL WALK 7 until 9 p.m.
Ferry operates 6:30 until 9 p.m. See *Supplemental Information*.

BARGE TRIP 2 p.m. See *Supplemental Information*.

"MAN-MADE CHANNEL" 2:30 p.m. Tour of Canal Museum; history of Potomac Canal, C & O Canal, and Great Falls Tavern Building; stories of life on the Canal, canal engineering, and operation, including inspection of locks and other canal structures. Meet at Museum entrance, Great Falls, Md. No public transportation available.

POWERBOAT RACES FOR PRESIDENT'S CUP REGATTA
Potomac River. See newspapers for details.

EXPLORING AND PHOTOGRAPHING THE SKY 8 p.m.
Ft. Reno Park. See the Moon and Saturn through a telescope. Bring a camera, as phase and position of the Moon make this a good evening for pictures. See *Supplemental Information*.

September 19, Saturday:

THEODORE ROOSEVELT ISLAND WALK 2 p.m. See *Supplemental Information*.

BARGE TRIP 2 p.m. See *Supplemental Information*.

LICHEN WALK 3 p.m. Nature's plant pioneers are interesting and valuable, but usually unnoticed. Join a guest expert in Rock Creek Park. Meet at 16th St. & Alaska Ave. NW.

September 20, Sunday:

BEAR ISLAND GEOLOGY WALK AND COOKOUT 9:30 a.m. until 4 p.m. Visit an old gold mine dump; find galena and pyrite; learn to read the stories written in stone. Bring lunch and water. Cooking may be arranged using aluminum foil. Wear rugged hiking shoes. Meet in parking area at Cropley, Md. (near Anglers Inn), on C & O Canal. No public transportation available.

THEODORE ROOSEVELT ISLAND WALK 2 p.m. See *Supplemental Information*.

BARGE TRIP 2 p.m. See *Supplemental Information*.

September 26, Saturday:

NATURALIST BOAT TRIP 10 a.m. Much of geological and biological interest may be seen on a boat ride up the Potomac River. See *Supplemental Information* for information concerning reservations, fare, and meeting place.

FORESTED ISLAND 2 p.m. Theodore Roosevelt Island has a wide variety of trees, shrubs, and woody vines. See *Supplemental Information*.

BARGE TRIP 2 p.m. See *Supplemental Information*.

SAILING RACES—PRESIDENT'S CUP REGATTA Potomac River. See your newspaper for details.

September 27, Sunday:

INDIANS ON ROOSEVELT ISLAND 2 p.m. Learn how the Indians would have used the plants, animals, and minerals found on Theodore Roosevelt Island. See *Supplemental Information*.

BARGE TRIP 2 p.m. See *Supplemental Information*.

September 27, Sunday:

"TOWN, GOWN & CAPITAL CITY" 2:30 p.m. Colorful stories of life in Old George Town told along Bridge (M) Street from Key Bridge to 30th & M Sts., NW. History of George Town taverns, the Old Stone House, and C & O Canal. Meet at M St. end of the Key Bridge, Georgetown.

MUSHROOM WALK 3 p.m. A guest leader will introduce to us the interesting fungi of Rock Creek Park and explain their role in Nature. Meet at Trail Center on Beach Dr. near Military Rd.

SAILING RACES—PRESIDENT'S CUP REGATTA Potomac River. See your newspaper for details.

OCTOBER EVENTS

October 3, Saturday:

BARGE TRIP 2 p.m. See *Supplemental Information*.

THEODORE ROOSEVELT ISLAND WALKS 10 a.m. & 2 p.m. Ferry operates from 9:30 a.m. until 4 p.m. See *Supplemental Information*.

MOSS WALK 3 p.m. A guest leader will conduct a walk to assist you in learning about these interesting plants. Meet at the Rock Creek Nature Center. See *Supplemental Information*.

October 4, Sunday:

THEODORE ROOSEVELT ISLAND WALKS 2 & 4 p.m. Autumn is a wonderful season to explore. Join a Park Naturalist at 2 or 4 p.m. Ferry operates from 1:30 until 5:30 p.m. See *Supplemental Information*.

BARGE TRIP 2 p.m. See *Supplemental Information*.

"TOWN, GOWN & CAPITAL CITY" 2:30 p.m. Colorful stories of life in Old George Town told along Bridge (M) Street from Key Bridge to 30th & M Sts., NW. History of George Town taverns, the Old Stone House, and C & O Canal. Meet at M St. end of the Key Bridge, Georgetown.

AUTUMN FLOWERS 3 p.m. Fort Totten Park, Hawaii Ave. & Allison St., NE.

October 10, Saturday:

BIRD WALK 9 a.m. Meet at Stop 39 on Cabin John streetcar line (MacArthur Blvd. & Cornell Ave.), Glen Echo, Md.

ISLAND ADVENTURES 10 a.m. & 2 p.m. Learn about the plants, animals, and rocks on Theodore Roosevelt Island. Ferry operates from 9:30 a.m. until 4 p.m. See *Supplemental Information*.

BARGE TRIP 2 p.m. See *Supplemental Information*.

October 10, Saturday:

EXPLORING AND PHOTOGRAPHING THE SKY 7:30 p.m. Ft. Reno Park. View the *heavens* through a telescope. Bring a camera if you wish to take telescopic pictures of the Moon. Bring pictures taken Sept. 13. See *Supplemental Information*.

October 11, Sunday:

THEODORE ROOSEVELT ISLAND WALKS 2 & 4 p.m. Ferry operates from 1:30 until 5:30 p.m. See *Supplemental Information*.

BARGE TRIP 2 p.m. See *Supplemental Information*.

"A MAN AND A PLAN" 2:30 p.m. The Washington Monument and points of interest along the Mall as far as the Smithsonian Institution are an interesting physical introduction to the history of city planning and General Washington's contribution to the Nation and the City. Meet at the Monument entrance.

OAKS & ACORNS WALK 3 p.m. A guest expert will show us how to identify the oaks, including some hybrids. Meet at the Rock Creek Trail Center on Beach Dr. near Military Rd.

October 17, Saturday:

FORT WASHINGTON, MD., NATURE WALK 3 until 5 p.m. Meet at entrance (sally port) to the old fort. Hike ends at same point. For driving directions see *Supplemental Information*. No public transportation available.

THEODORE ROOSEVELT ISLAND WALKS 10 a.m. & 2 p.m. Ferry operates from 9:30 a.m. until 4 p.m. See *Supplemental Information*.

BARGE TRIP 2 p.m. See *Supplemental Information*.

October 18, Sunday:

ISLAND VARIETY 2 & 4 p.m. Theodore Roosevelt Island offers variety from marsh, swamp, and flood plain to ridges. Ferry operates from 1:30 until 5:30 p.m. See *Supplemental Information*.

BARGE TRIP 2 p.m. See *Supplemental Information*.



Fort Washington, Sally Port Entrance

October 18, Sunday:

“A NIGHT OF TERROR” 2:30 p.m. The story of the life and death of Abraham Lincoln, the flight of assassin John Wilkes Booth, and a tour of the buildings. Meet at Lincoln Museum, 511 10th St., NW.

PIONEER PLANT USES 3 p.m. Rock Creek Park still contains many kinds of plants which your pioneer forefathers found essential. Find out what these plants were and how they served man's needs. Meet at 16th St. & Alaska Ave., NW.

October 24, Saturday:

BIRD WALK 9 a.m. Meet at Rock Creek Trail Center on Beach Dr. near Military Rd.

October 24, Saturday:

THEODORE ROOSEVELT ISLAND WALKS 10 a.m. & 2 p.m. Ferry operates from 9:30 a.m. until 4 p.m. See *Supplemental Information*.

BARGE TRIP 2 p.m. See *Supplemental Information*.

October 25, Sunday:

THEODORE ROOSEVELT ISLAND WALKS 2 & 4 p.m. Ferry operates from 1:30 until 5:30 p.m. See *Supplemental Information*.

BARGE TRIP 2 p.m. See *Supplemental Information*.

GEOLOGY WALK 3 p.m. Learn interesting highlights about the geological story in the vicinity of Montrose Park with a Park Naturalist. Includes walk to an abandoned quarry. Meet at R St. & Avon Pl., NW. Trip ends at starting point.

October 31, Saturday:

FALL IN THE FOREST 3 p.m. Learn what changes occur in plants and animals as winter approaches. Meet at 44th St. & Reservoir Rd., NW, adjoining Glover-Archbold Parkway.

NOVEMBER EVENTS

Weather during November can be quite variable. Wear hiking shoes or boots and bring an extra sweater. Toughen up before cold weather, and see how nature prepares for five months of winter.

November 1, Sunday:

BEAR ISLAND HIKE 2 until 5 p.m. Visit again this wild, interesting area. Meet in parking area at Cropley, Md., (near Anglers Inn) on C & O Canal. No public transportation available.

EXPLORING THE SKY 7 p.m. Ft. Reno Park. Learn some of the fall constellations. Make telescopic observations of galaxies, multiple stars, clusters, and nebulae. Bring pictures taken May 17 and Oct. 10. Dress warmly. See *Supplemental Information*.

November 7, Saturday:

ROCK CREEK PARK HIKE 2 until 5 p.m. Meet at 16th St. & Alaska Ave., NW. Hike ends same place.

November 8, Sunday:

CARDEROCK COOKOUT & HIKE 2 until 6 p.m. Bring your own food wrapped in 2 layers of aluminum foil. Water will be heated for hot drinks. Bring your own water and instant mixes. Meet at Stop 39, Cabin John streetcar line (MacArthur Blvd. & Cornell Ave., Glen Echo, Md.). Hike 3 miles each way on canal towpath.

November 14, Saturday:

GLOVER-ARCHBOLD PARKWAY HIKE 2 until 5 p.m. Meet at Stop 3, Cabin John streetcar line (Foxhall Rd. & MacArthur Blvd.). Return to starting point.

November 15, Sunday:

ROCK CREEK PARK HIKE 2 until 5 p.m. Meet at Conn. Ave. entrance to Zoo for a hike along Rock Creek. Hike ends near Pa. Ave. & M St., NW.

November 21, Saturday:

FORT WASHINGTON, MD., HIKE 2 until 4 p.m. Meet at entrance (sally port) to the old fort. Hike ends at same point. For driving directions see *Supplemental Information*. No public transportation.

November 22, Sunday:

VIRGINIA SHORE, POTOMAC RIVER HIKE 2 until 5 p.m. Meet at Rosslyn Circle near Key Bridge. Hike ends at Chain Bridge near streetcar line. Trail is rough and unimproved; small children and inexperienced hikers should come another day.

November 28, Saturday:

C & O CANAL TOWPATH HIKE 2 until 5 p.m. Meet at Stop 39 on Cabin John streetcar line (MacArthur Blvd. & Cornell Ave., Glen Echo, Md.). Hike ends at Stop 3 (MacArthur Blvd. & Foxhall Rd.).

November 29, Sunday:

ROCK CREEK PARK HIKE 2 until 5 p.m. Meet at Trail Center on Beach Dr. near Military Rd. for hike in central part of Park. Return to starting point.

SUPPLEMENTAL INFORMATION

All interpretive events listed in this program are conducted by Park Historians or Park Naturalists who accompany the groups to provide interpretation and answer questions. These activities are free except for transportation on barge and boat trips.

Public transportation is available to most meeting places. Call the proper transportation company for details on how to reach each meeting place. If in the District, call D.C. Transit, FEderal 7-1300.

BARGE TRIPS: Mule-drawn barge trips on the Chesapeake and Ohio Canal are conducted in cooperation with Government Services, Inc. A Park Historian or Park Naturalist accompanies each scheduled trip to interpret the history of the Canal and natural features along the way. Trips are made regardless of inclement weather.

Because of limited seating capacity, tickets are on sale at the office of Government Services, Inc., 1135 21st St., NW. (call NAational 8-7363), from 8 a.m. until 4:30 p.m., Monday through Friday. Tickets are also available at the barge before departure. (On week ends and holidays call NAational 8-0037 for information.) Soft drinks, ice cream, candy, cookies, and post cards are sold on the barge. Organized groups may charter the barge on Monday, Tuesday, Thursday, and Friday evenings through Government Services, Inc.

Schedule

May 2 through October 25 (Saturdays, Sundays, and holidays):

Adults, \$1 round trip; children 12 and under, 60¢ round trip.

At 2:00 p.m. the barge leaves Lock 3, located one block south of 30th & M Sts., NW., and proceeds upstream to Lock 5, Brookmont, Md., down steps from Ridge Dr. & 61st St. (Stop 24, Cabin John streetcar line). Following a 10-minute rest stop, the barge returns to Lock 3.

One-way passengers may leave the barge at the upper terminus, Lock 5, or embark at that point for the downstream portion of the trip. All passengers pay round-trip fare regardless of distance traveled.

June 3 through September 9 (Wednesday evenings):

Adults, 75¢; children 12 and under, 50¢.

At 6:30 p.m. the barge leaves Lock 3, one block south of 30th & M Sts., NW. Barge returns to Lock 3 at 9:30 p.m.

BIRD WALKS: The trips are led by Park Naturalists trained in both bird lore and techniques of bird watching. Binoculars are helpful, but they are not absolutely necessary.

BOAT TRIPS: Six motorboat trips are scheduled on the Anacostia and Potomac Rivers. Four trips will be led by Park Historians on June 13, July 25, August 22, and September 12. Park Naturalists will conduct a trip August 1 and another September 26. All are two hours in length and leave at 10 a.m. from the float on the Potomac River at the foot of Wisconsin Avenue in Georgetown. An open-type motorboat without overhead cover or cabin is used for these trips. Reservations *must* be made in advance by calling Government Services, Inc., National 8-7363. The fare for adults is \$1.50 and for children 12 or under, 80¢.

CURTIS-LEE MANSION: This "House of Decision," completed between 1804 and 1818, was known as Arlington House and became the home of General Robert E. Lee for 30 years before the Civil War. Interpretive personnel is on duty, when the Mansion is open, to answer questions and acquaint visitors with its unique history. Located in Arlington National Cemetery, it is open from 9:30 a.m. until 6 p.m. from April 1 until October 1. From October until April it closes at 4:30 p.m. Admission fee of 25¢ is charged all over 18 years of age. To arrange tours for organized groups, call Jackson 2-3000, Ext. 4102. (Call KIng 9-7800, Ext. 38 for AB & W bus schedule.)

EVENING ADVENTURES: These activities are designed primarily for family groups and children. They are scheduled at various locations on Tuesday and Thursday evenings from June 23 through August 20. No seating is provided; so bring a blanket to spread on the ground or a folding chair. The majority of programs feature movies projected at the *Naturevan*, a unique, mobile, audiovisual unit.

Interspersed through the season, however, are six programs titled *Fun with Nature* scheduled at 7 p.m. Each of them will include a short nature walk, a talk-demonstration, and actual opportunity to have some practice in the nature hobby theme of the evening.

Except for the Evening Adventures at Fort Hunt, the Rock Creek Nature Center, and the Rock Creek Trail Center, all others are canceled in case of rain.

EXPLORING THE SKY: Members of the National Capital Astronomers bring their telescopes to these evening events and focus them on the stars, moons, and planets. They point out the constellations and tell about the legends and mythology related to them. If you have a pair of binoculars, they may be a useful supplement. In case you wish to take telescopic pictures of the moon when photographing the sky is scheduled, cameras with adjustable shutter speeds and diaphragms are best; box cameras are frequently unsatisfactory. Black and white film of A.S.A. speed 80 or more should be used. On cloudy evenings, illustrated talks on astronomy are substituted. If raining at the scheduled time, the event is canceled.

Astronomy events are held in Fort Reno Park, north of the intersection of 40th & Chesapeake Sts., NW.

FORT WASHINGTON, MD.: This guardian of the Nation's Capital, the history of which dates from 1808 to the present, was built to protect the City. On the reservation there are excellent sites for picnics. Historical exhibits may be seen at the entrance (sally port) to the old fort between 10 a.m. and 5 p.m. on Saturdays, Sundays, and holidays from May 3 through Labor Day. The fort may be reached via Nichols Ave. and South Capitol St., SE., to Indian Head Road (Maryland State Route 224). Turn right 5½ miles below the District line, and follow directional signs to the parking lot for the old fort. There is no admission fee. Special arrangements for organized groups to tour the fort may be made by calling REpublic 7-1820, Ext. 2565.

HIKES: Hikes are those longer, more difficult walks scheduled for November. Sturdy shoes and warm field clothing should be worn. Some of these trips include cookouts; come prepared with your own food and eating utensils. Interpretation is carried out on these trips, and questions are welcomed.

HISTORICAL TOURS: Visits to national memorials and sites of national historic interest in and about the Nation's Capital are conducted by Park Historians and provide an opportunity to become acquainted with the history and significance of Washington's historic sites. This series of walks makes available the history of several of the larger memorials and historic sites in greater detail than is usually presented in the areas themselves. The walking distance is short and the pace leisurely.

HISTORICAL TOURS WITH CAMERAS: Catching history with a camera should be an interesting experience for those who wish to take their own pictures. Fort Washington provides challenges to historical photographers. These tours will be conducted by a Park Historian assisted by a guest photographer. Each person is responsible for his own equipment.



School Group at Rock Creek Nature Center

KENILWORTH AQUATIC GARDENS: Here, in a number of verdant riverside pools, grow hardy and tropical waterlilies and lotuses. Native flowers, birds, and aquatic animals lend variety and excitement to the quiet pools and marshy fringe. Wild irises begin their colorful display by mid-May to be followed by the hardy waterlilies that come into bloom in early June. By mid-July lotuses and tropical varieties make a show with their varied colors which last into October. The gardens are at their best in the mornings.

A Park Naturalist conducts interpretive flower and bird walks around the pools and through the adjoining marshland each week end beginning May 31 and continuing through September 13. Consult each month's EVENTS for hours.

To reach Kenilworth Aquatic Gardens by auto, follow Kenilworth Ave. northbound to Quarles St. exit, bear right, cross Eastern Ave. overpass, turn left to Douglas St., then right on Douglas St. to parking area and office. Bus passengers reach the Gardens by taking route U-2, alighting at Kenilworth Ave. & Polk St., NE, using the pedestrian overpass, and walking west on Douglas St. to parking area and office.

ROCK CREEK NATURE CENTER: This facility, housed in the old Klinge Mansion, brings a new approach in translating Nature's ways in the great outdoors. In an attractive setting, children and adults alike spend absorbing and adventure-packed hours learning about plants, rocks, insects, birds, and other wild animals that live in the surrounding woodland.

Exhibits, unique visual devices, and working demonstrations show the amazing ways of animals and plants. Live reptiles, a glass-sided beehive, sound recordings of insect and other animal calls stimulate intense outdoor interests and hobbies.

As Park Naturalists interpret, nature becomes vividly real—alive! The outdoors takes on a new meaning and, with this clearer understanding, a keener appreciation comes to both the child and parent.

Organized groups may visit the Nature Center from Tuesday through Friday *by appointment*. On Saturdays and Sunday afternoons all are invited to enjoy its many unusual features. A brochure giving details concerning the Nature Center is available upon request. Follow signs from Porter St. and Williamsburg La., NW (just north of the National Zoological Park). For information and appointments, call REpublic 7-1820, Ext. 2557.

SYLVAN THEATRE: Each Friday night during June, July (except July 3), and August a distinguished outdoor program is held in the Sylvan Theatre on the Washington Monument grounds. Each

opens with a half-hour concert or dance presentation followed by an illustrated talk of approximately an hour by a guest speaker.

The Sylvan Theatre may be reached from streetcars on 14th St. marked "Bur. Engraving." Ample parking space for automobiles is available on the roadways near the Monument and along the west-bound lane of Independence Ave.

If weather is unfavorable, the program will be held in the Commerce Department Auditorium on 14th St. between Constitution Ave. and E St., NW. A sign on the Sylvan Theatre stage and at the Commerce Building entrance will announce change of location. If in doubt, call the United States Park Police (REpublic 7-1820, Ext. 3161) after 6:30 p.m. on the program date.

This summer's series again features a wide variety of subjects. The speakers, as well as the dance and music groups, appear as a public service. To them, the sincere thanks of National Capital Parks. For information, call REpublic 7-1820, Ext. 2557.

THEODORE ROOSEVELT ISLAND: This island, accessible only by boat, is preserved as a memorial to President Theodore Roosevelt. A Park Naturalist is on duty during the hours the ferry operates. He leads nature walks starting at the orientation station, where exhibits explain the Island's significance and story.

Three and a half miles of foot trails lead through swamp, woodland, and beside one of the few unspoiled marshes in the Washington region. These varied habitats contain a wealth of flowers, trees, birds and other animals.

The ferry operates from the float on the Potomac River at the foot of Wisconsin Ave., in Georgetown on each Saturday and Sunday from May 30 through October 25—1 until 4:30 p.m., with additional service as shown in each month's EVENTS. There is no charge for the ferry.

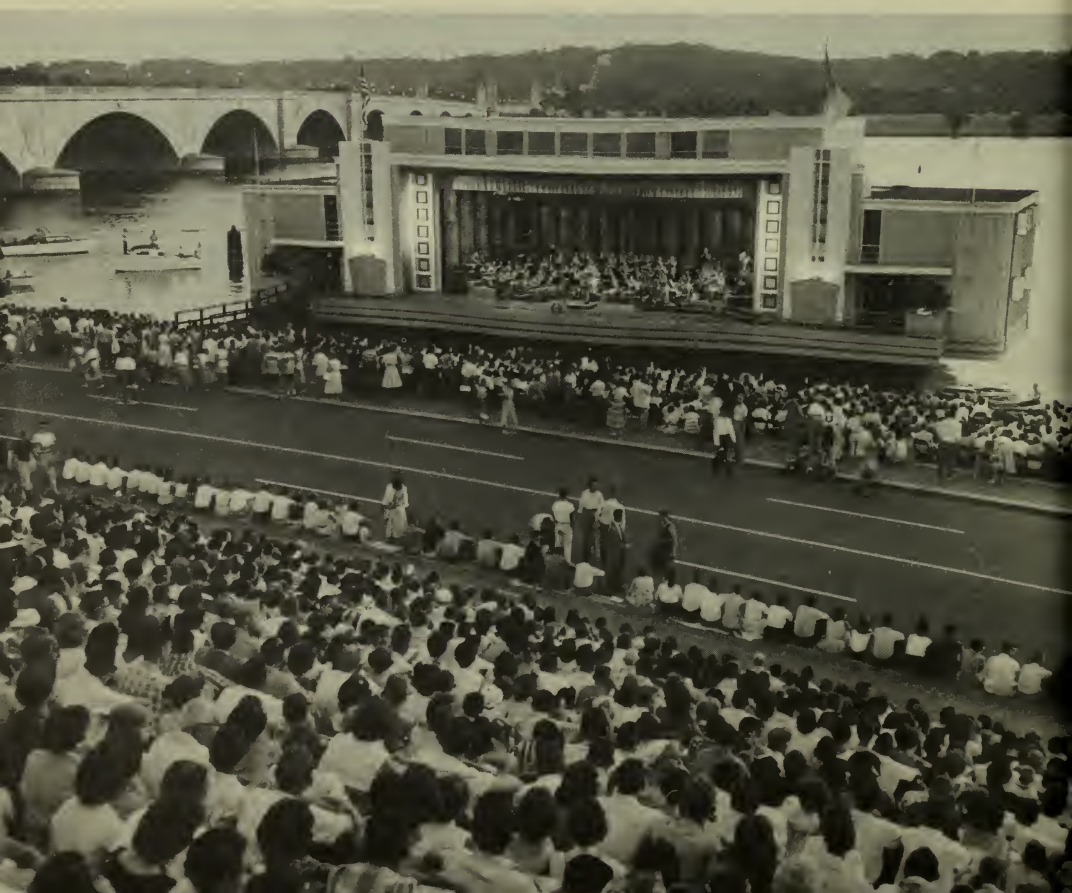
WALKS: Park Naturalists lead a variety of nature walks which emphasize rocks, plants, animals, and natural processes in the National Capital Parks. Guest leaders occasionally give of their time and experience on special walks.

All walks are conducted rain or shine. Come prepared.

WATERGATE: Concerts are given at 8:30 p.m. from June 7 through August 28 with the United States Marine Band playing on Sunday evenings; the United States Army Band playing on Tuesday evenings; the United States Navy Band playing on Thursday evenings; and the United States Air Force Symphony Orchestra playing on Friday evenings. The *Watergate* is located on the Potomac River near the Lincoln Memorial, just north of the Arlington Memorial Bridge. Park-

ing is available on nearby streets and park drives. Potomac Park buses furnish public transportation. Concerts are cancelled in case of rain. Admission is free.

Watergate Concert



RELATED INFORMATION

Courses for Children or Adults:

CONSERVATION ROUNDUP: A week's experience in outdoor activities for young people of junior high or senior high school standing is held in late August. Advance registration is required.

FIELD LEADERSHIP COURSE IN BIRD STUDY: A nine-week course, from the last Saturday in February through April, is conducted by Park Naturalists to train leaders to conduct youth groups on bird study outings. The techniques of leadership and bird identification are both stressed.

JUNIOR NATURALIST TRAINING COURSE: Park Naturalists conduct a nature course for 5th and 6th graders that begins in March and continues through April.

TRAINING COURSE IN OUTDOOR LEADERSHIP: Training for persons interested in nature leadership and techniques of camp counseling is given on the first four Saturdays (four six-hour sessions) in May.

DAY CAMPS: Nature activities are of first importance in D.C. Recreation Department Day Camps where Park Naturalists cooperate with camp leaders to provide thrilling outdoor adventures. Children wishing to attend these free camps may telephone the D.C. Recreation Department (ADams 4-2050) for information and applications.

GREAT FALLS MUSEUM: The Historical and Natural History Museums are open daily from June through Labor Day and on Saturdays and Sundays, weather permitting, for the remainder of the year. The Natural History Wayside Exhibit is open daily except Tuesdays and Wednesdays from late June through Labor Day. By arranging in advance with the Park Naturalist or Park Historian, parties of 15 or more may take short walks to the falls or along the canal towpath to learn firsthand the story of nature and history. Call REpublic 7-1820, Ext. 2557.

JEFFERSON MEMORIAL: Reflection on the life of Thomas Jefferson in this memorial is a rewarding experience. Open daily from 9 a.m. until 9 p.m. Special group visits can be arranged by calling REpublic 7-1820, Ext. 2546. Admission free.

LINCOLN MEMORIAL: Visit and meditate on the life of Abraham Lincoln. Open daily from 9 a.m. until 9 p.m. Special group visits may be arranged by calling REpublic 7-1820, Ext. 2573. No admission fee.

LINCOLN MUSEUM AND THE HOUSE WHERE LINCOLN DIED: Ford's Theatre and the Petersen House located across the street, were made famous during an April night of terror which claimed a President's life. The theatre is now a museum dedicated to a study of Lincoln's life. The exhibit is divided into two sections, the first of which covers the entire life and career of this great "self-made" man. The second part deals solely with Lincoln's assassination and the conspirators. The house across the street is maintained in much the same condition that it was the night Lincoln died there. The museum is open from 9 a.m. until 9 p.m. The house is open from 9 a.m. until 5:30 p.m. For group arrangements call REpublic 7-1820, Ext. 2565. Admission fee, 10¢; all under 19, free.

PIERCE MILL: The present structure is believed to have been built about 1820. The mill is located in Rock Creek Park at the intersection of Beach Dr. and Tilden St. It is open to the public as indicated by the following schedule.

September 1 through June 15
Fridays from 9 a.m. until
5 p.m.
Sundays from 1 until 5 p.m.
June 16 through August 31
Saturdays from 9 a.m. until
5 p.m.
Sundays from 1 until 5 p.m.

There is no admission fee. School groups may visit the mill on Fridays from September 1 through June 15. For group arrangements with the miller, call NAtional 8-7363.

SCHOOL ASSEMBLY TALKS: Illustrated talks explaining the historical and natural features of National Capital Parks are presented from early October through about mid-March by Park Historians and Park Naturalists. These are planned to complement the school curriculum and may be requested by any school within an eight-mile radius

of the White House. An announcement of these talks is issued in early September.

SPRING HIKES: Early spring hikes, conducted by Park Naturalists, are scheduled on March week ends.

WASHINGTON MONUMENT: This outstanding landmark was constructed between 1848 and 1884. The various memorial stones are focal points of interest for those who take the stairway. An excellent view of the city, which Washington helped plan, is the reward of all who reach the top. Open daily from 9 a.m. until 5 p.m. Ascent may be made by elevator or by stairway. Elevator charge, 10¢; there is no charge for those under 19. For special group arrangements, call REpublic 7-1820, Ext. 2565.

CARTER BARRON AMPHITHEATER

Each evening from early June through Labor Day special summer entertainment is presented under the stars at Carter Barron Amphitheater in Rock Creek Park adjacent to 16th St. & Colorado Ave., NW. It is reached via the 16th St. bus line and 14th St. street cars. Special buses await theater-goers at the theater entrance after each performance. A paved parking area accommodates over 700 automobiles.

Programs feature Musicals and Operettas direct from Broadway, Symphony Concerts, Folk Music with outstanding guest artists, and Ballets featuring internationally famous dancing stars. All performances begin at 8:30 p.m. The complete summer schedule is available about May 1.

Tickets are on sale at Carter Barron Amphitheater Box Office, Rock Creek Park (Phone Tuckerman 2-2620), and at the Super Music City Box Office, 1350 F St., NW. (Phone Sterling 3-3916). For program information write: Superintendent, National Capital Parks, Room 1211, Interior Building, Washington 25, D.C.

Carter Barron Amphitheater

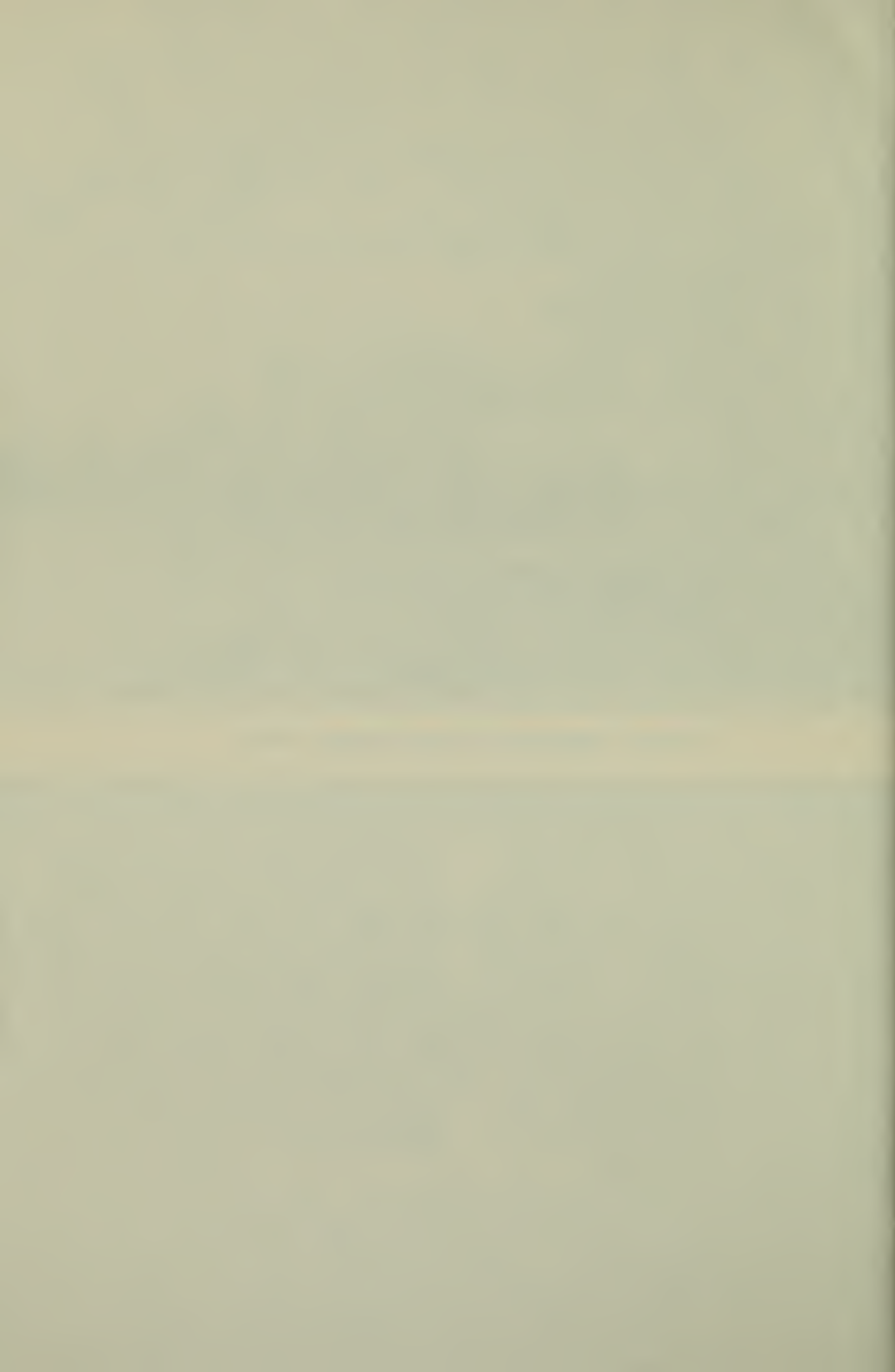




Jefferson Memorial in Cherry Blossom Setting

SPECIAL EVENTS

The CHERRY BLOSSOM FESTIVAL, POWERBOAT REGATTA, PRESIDENT'S CUP REGATTA, and a number of special celebrations are held throughout the year. Dates for these occasions are shown in the monthly EVENTS of the preceding pages. Watch the newspapers or call REpublic 7-1820, Ext. 2095 for detailed information.





OUTDOOR PROGRAM
FOR 1960
WILL BE PUBLISHED NEXT MARCH
FOR COPIES, WRITE
THE SUPERINTENDENT
NATIONAL CAPITAL PARKS
UNITED STATES DEPARTMENT OF THE INTERIOR
WASHINGTON 25, D.C.



Rock Creek Park in Winter

Many varied activities form the winter program of National Capital Parks. Interesting background history of many national memorials and historic sites, wise use of city parks, and thrilling stories of the wildlife living there are given as illustrated school assembly talks upon request. A full schedule of adventurous days exploring Nature's story of the rocks, plants, and animals come to both children and parents at the Rock Creek Nature Center. Illustrated talks with color film are presented by guest speakers at monthly intervals in the Interior Department Auditorium. For information, write the Superintendent, National Capital Parks.

U.S. Department of the Interior
National Park Service,
National Capital Parks
Washington 25, D.C.



For additional copies of the *Outdoor Program 1959*, or for further information, call:

The Park Naturalist, REpublic 7-1820, Ext. 2557
or

The Park Historian, REpublic 7-1820, Ext. 2565

Saturdays, Sundays, and holidays call

The Park Police, REpublic 7-1820, Ext. 3161