

084  
29.72/2  
86/3

# Design

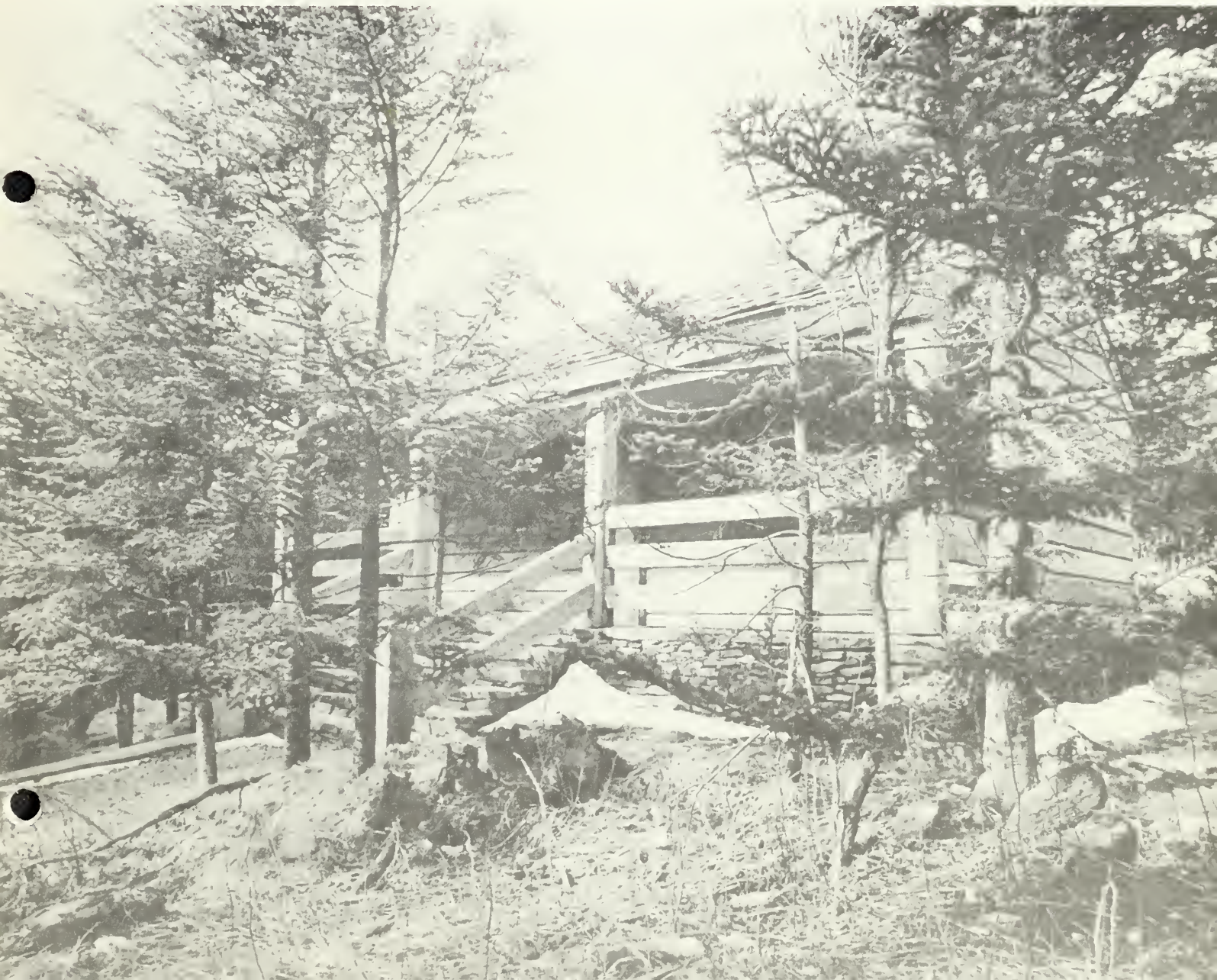
Summer 1986

U.S. Department of the Interior  
National Park Service  
and  
National Recreation and Park  
Association

RECEIVED

NOV 18 2010

U.S. DEPARTMENT OF THE INTERIOR  
NATIONAL PARK SERVICE  
LIBRARY





## Design

A publication of the Park Practice Program

The Park Practice Program is a cooperative effort of the National Park Service and the National Recreation and Park Association.

William Penn Mott, Jr., Director  
National Park Service

R. Dean Tice, Executive Director  
National Recreation and Park Association

### EDITORIAL STAFF

National Park Service  
U.S. Department of the Interior  
Kathleen A. Pleasant, Managing Editor  
Arlene J. Fialkoff, Editorial Assistant

### NRPA PRINTING STAFF

Albert H. Ziegenfuss, Manager

The Park Practice Program includes: *Trends*, a quarterly publication on topics of general interest in park and recreation management and programming; *Crist*, a quarterly publication on practical solutions to everyday problems in park and recreation operations including energy conservation, cost reduction, safety, maintenance, and designs for small structures; *Design*, a quarterly compendium of plans for park and recreation structures which demonstrate quality design and intelligent use of materials.

Membership in the Park Practice Program includes a subscription to all three publications and a library of back issues arranged in binders with indices, and all publications for the remainder of the calendar year.

The initial membership fee is \$105; annual renewal is \$45. A separate subscription to *Design* is \$70 initially, and \$18 upon renewal. Subscription applications and fees, and membership inquiries should be sent *only* to: National Recreation and Park Association, 3101 Park Center Drive, Alexandria, VA 22302.

The information presented in any of the publications of the Park Practice Program does not reflect an endorsement by the agencies sponsoring the program or by the editors.

Articles, suggestions, ideas and comments are invited and should be sent to the Park Practice Program, U.S. Department of the Interior, National Park Service, P.O. Box 37127, Washington, D.C. 20013-7127, Telephone: (202) 343-7067.

## Dear Readers:

This Summer 1986 issue of *DESIGN* features structures that would enhance any park and recreation area. The cover photo and lead article feature a rustic, low maintenance camping area rest room located at Mount Mitchell State Park in North Carolina. Next comes a refreshment shelter constructed at Washington Park, Illinois.

We also have an inexpensive wooden trash can holder from the Sarasota, Florida, County Parks and Recreation Department, and a design for nesting boxes for wood ducks and osprey which were constructed for the Indian Valley Reservoir in Northern California.

## Managing Editor

This chart indicates the proper places to insert new design sheets in your *DESIGN* binder.

<u>Behind Index No.</u>	<u>Insert New Sheet Index No.</u>	<u>Backed by Index No.</u>
B-3871	B-3872	B-3873
B-3873	B-3874	B-3875
B-3875	B-3876	B-3877
R-5009	R-5010	R-5011
I-6946	I-6947	I-6948
I-6948	I-6949	I-6950
B-3877	B-3878	B-3879

All plans contained in *Design* are presented as guidelines and suggestions, not as blueprints for construction. Before building from any plan, be sure to consult federal, state, and local safety and building codes. We particularly recommend your checking building plans for compliance with the National Fire Protection Association's — NFPA No. 101, The Life Safety Code, of 1976.

Also, to assure barrier-free design that permits access for all people, check your plans for com-

pliance with the American National Standards Institute's ANSI A117.1. *American National Standard Specifications for Making Buildings and Facilities Accessible to, and Usable by, the Physically Handicapped.*

When submitting new materials for *Design*: We'd like a black and white glossy photograph showing your structure. The photo should be of good quality and in sharp focus. For best reproduction, we like to receive 8" x 10" photos, but smaller ones can be used if their quality is good.



# Camping Area Rest Room



This rustic, low maintenance camping area rest room is well suited for the severe climate that is characteristic of Mount Mitchell State Park in Yancey County, North Carolina.

The building has an inner heavy timber truss system with tongue and groove pine ceiling in the toilet rooms with integral beams for the porch roof, whole 8x10" treated pine log walls, a natural field stone base and hand-split

oak shake roofing. This gives it a rustic character to fit with the mountain setting.

A special design feature is the glazed block partitions framed with treated wood at the toilets, urinals and lavatories to protect the log walls. This, along with the quarry tile flooring on concrete slab, gives an easy surface for cleaning and keeping the building sanitary.

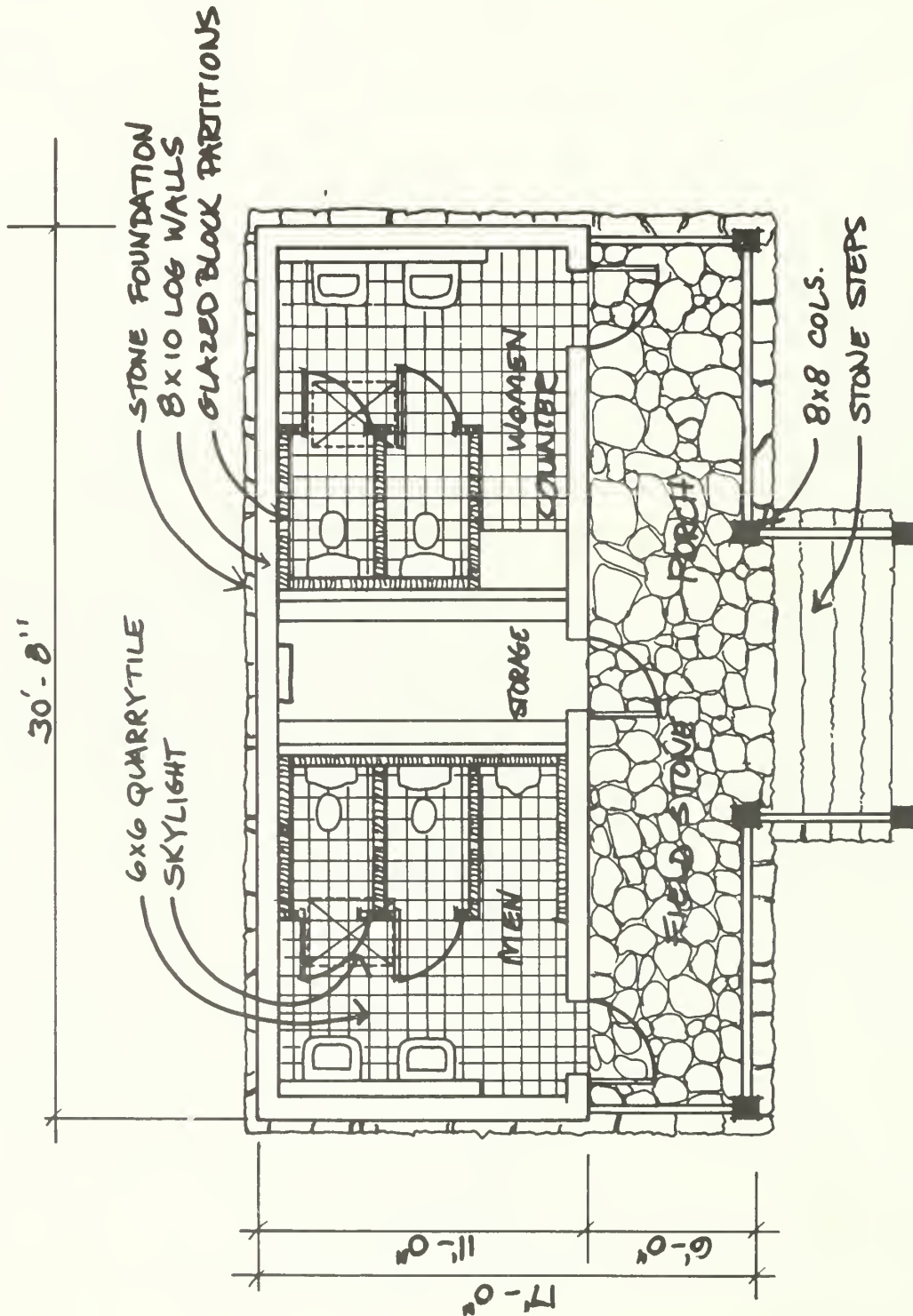
Skylights in each toilet area

give natural lighting and natural ventilation is accomplished with upper latticed vents at the gable ends and wood louvered vents low on the outside wall.

Special note: The camping area in which this structure is located is so remote that it is not accessible to the handicapped. Therefore, a special waiver was received to omit accessibility requirements in its design.

## DESIGN . . . A publication of the Park Practice Program

Camping Area Rest Room		Contributed by Donny Luke Arch. Design Studio
Index	B-3872	
	Control N-1661-B	
Summer 1986		

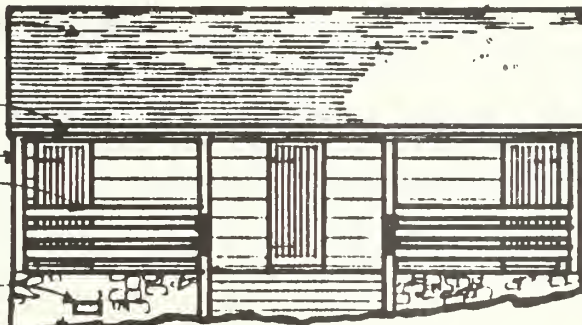


WOOD SHAKE ROOF

CEDAR FACIA

6x6 CEDAR COL.

8x6 CRAWL VENT



SOUTH ELEVATION  
1/4" = 1'-0"

FIXED SKYLIGHTS  
ALTERNATE G-1

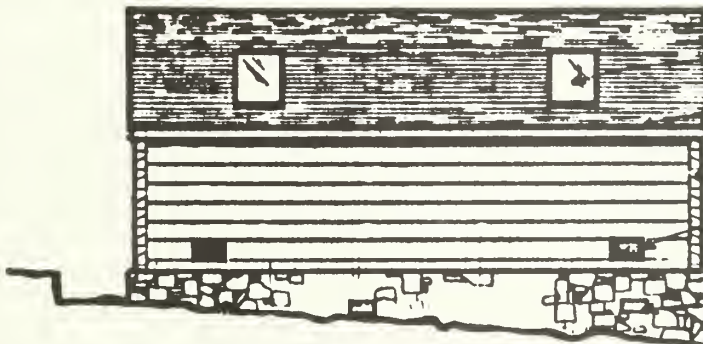
COPPER FLASHING OVER  
CEDAR RAKE BOARD

TYPICAL NOTCHED LOG  
ENDS REFER TO DET

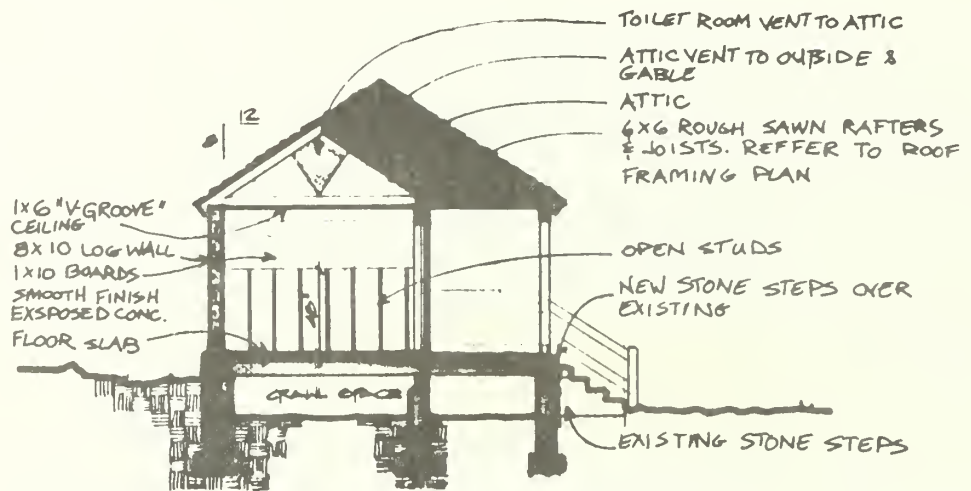
8x10" VENT THRU WALL

6" STONE VENEER

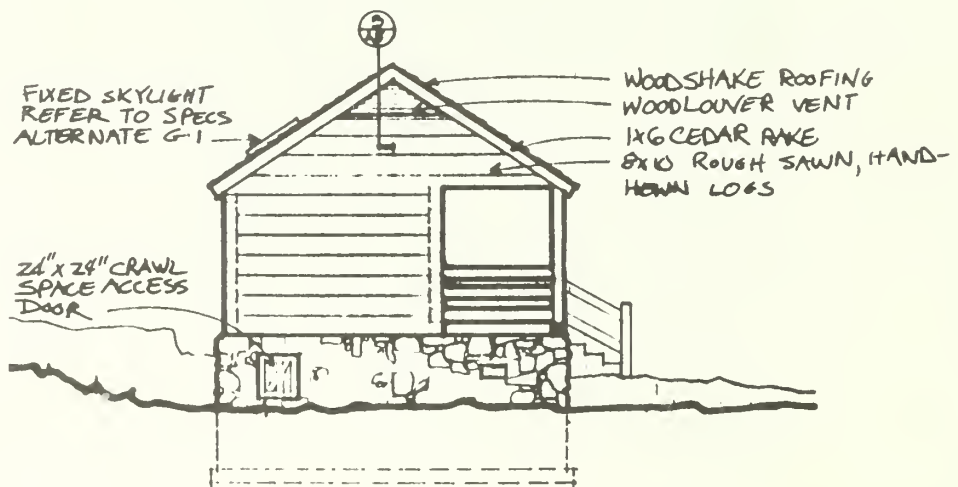
CRAWL VENT



NORTH ELEVATION  
1/4" = 1'-0"



(A) SECTION THRU STORAGE ROOM  
1/4" = 1'-0"



WEST ELEVATION  
1/4" = 1'-0"





Camping Area Rest Room (cont'd) B-3876





# Refreshment Shelter



Through a cooperative effort between the Robinson Park and Recreation Department, Illinois, and the Pepsi Cola Bottling Company, a refreshment shelter has been constructed in Washington Park, Illinois.

A location close to the playground, tennis courts and an exercise course was chosen and the benefits to the public and the park budget have been worthwhile.

The facility was bid out and built with local labor. The roof is a cedar, fire-retardant shingle left over from a local contractor rest stop job.

The four corner poles are made of 6x6 treated wood set in a 4" reinforced concrete pad. The walls are made of 4" blocks with a steel reinforced door put in the back storage area. The ceiling was enclosed and the entire building was

then painted by park employees with a redwood solid color to blend into the area.

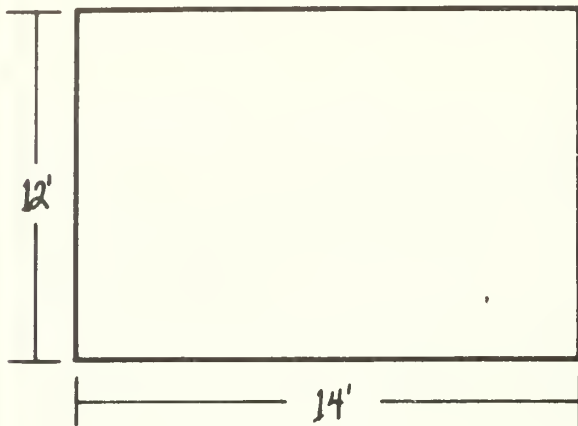
Total cost of the project was approximately \$2,000 with Pepsi providing \$500 plus the machine and filling it free for the first time. They also fill and maintain the machine throughout the summer. During the winter months the machine is removed.

## DESIGN . . . A publication of the Park Practice Program

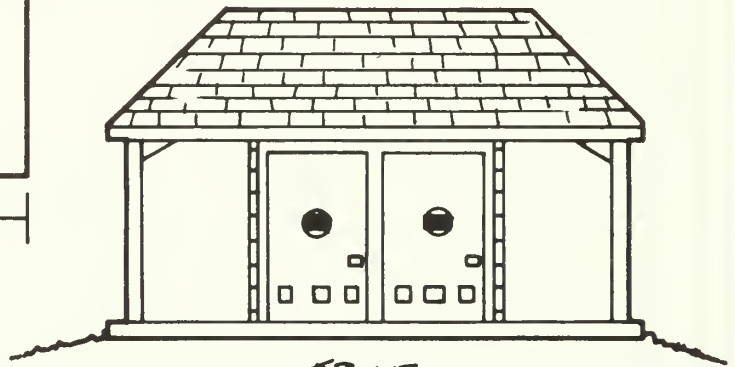
Refreshment Shelter		Contributed by Mikeal Shimer Robinson Rec Dept
Index	R-5010	
	Summer 1986	
	Control N-1665-R	

# REFRESHMENT SHELTER

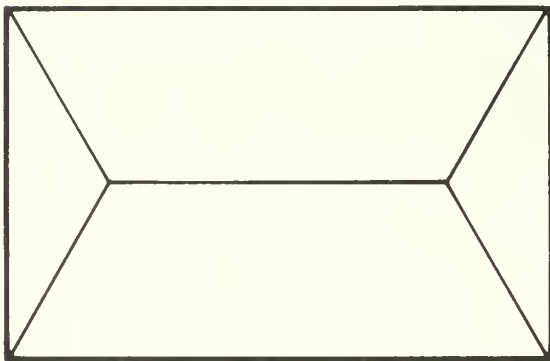
CONCRETE PAD



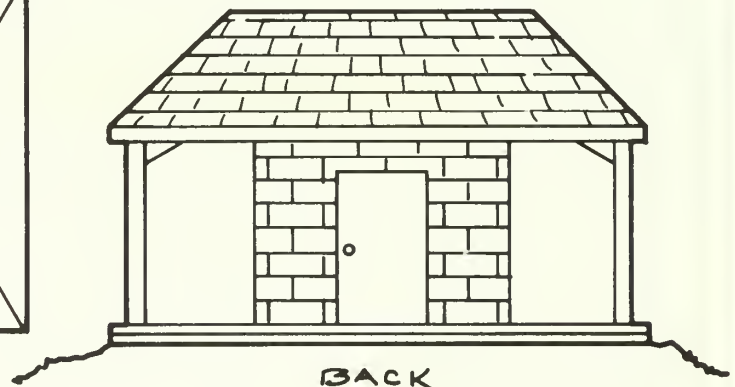
ROOF



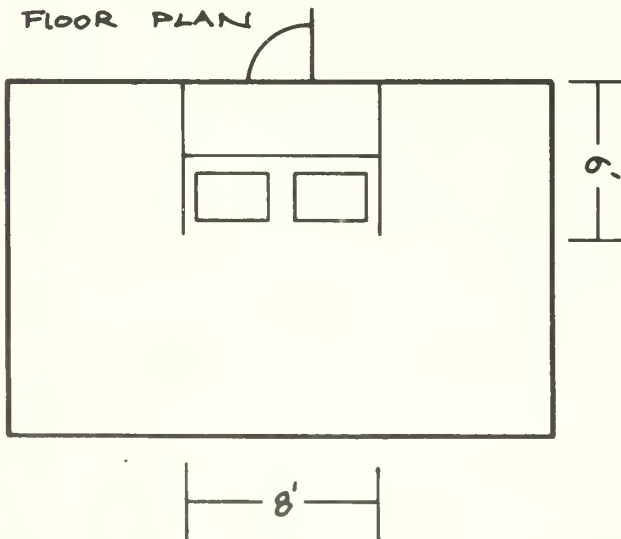
FRONT



FLOOR PLAN



BACK



SIDE

# Nesting Boxes



Wood duck nest is mounted to a tree at Indian Vally Reservoir in northern California. Nests were placed to aid the wood duck population increase its numbers.

New nesting boxes and nesting platforms were built for wood ducks and osprey at the Indian Valley Reservoir in northern California.

Employees from the Bureau of Land Management, California Department of Forestry and volunteers from Konocti Conser-

vation Camp prepared the nesting sites for the birds.

Biologists created prime fisheries at the reservoir by leaving all brush and trees in the valley prior to flooding the reservoir in 1975.

After the valley was flooded, wildlife such as bald eagles,

osprey and wood ducks began to appear at the lake during certain times of the year.

One problem that did exist at the lakes was too few nesting sites for the birds. To alleviate this problem, two dozen wood duck redwood nesting boxes were placed on trees around the

## DESIGN . . . A publication of the Park Practice Program

Nesting Boxes		Contributed by
Index	I-6947	Gregg Mangan
	Summer 1986	Clear Lake Res. Area, CA
Control F-1683-I		

Photos by Gregg Mangan



Before foliage is removed



REMOVING FOLIAGE  
in preparation for osprey  
nesting platforms.

the top of the tree is  
removed to allow room to  
build a nesting platform  
for osprey



After foliage is removed

The top of the tree is removed to allow room to build a nesting platform for osprey.



perimeter of the reservoir.

Wood ducks are becoming more popular as a game species in the fall/winter hunting season. These new nesting sites will eventually aid in the population of the wood ducks for hunting.

Osprey, a unique "fish hawk," subsist solely on the lake's sup-

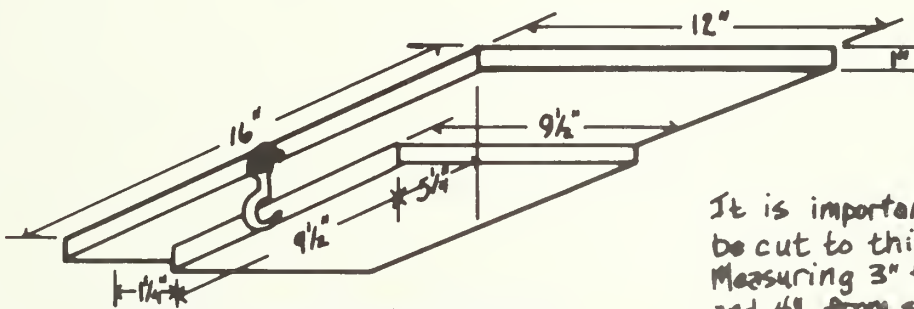
ply of fish. To help this bird species increase its population at Indian Valley, six nesting platforms were erected on trees where the top of the tree had been removed.

The "platform" trees were carefully selected so the nests would be protected and the

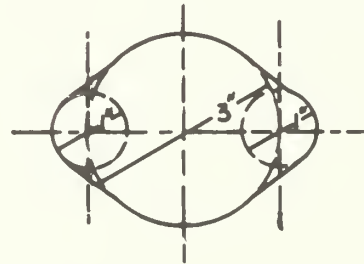
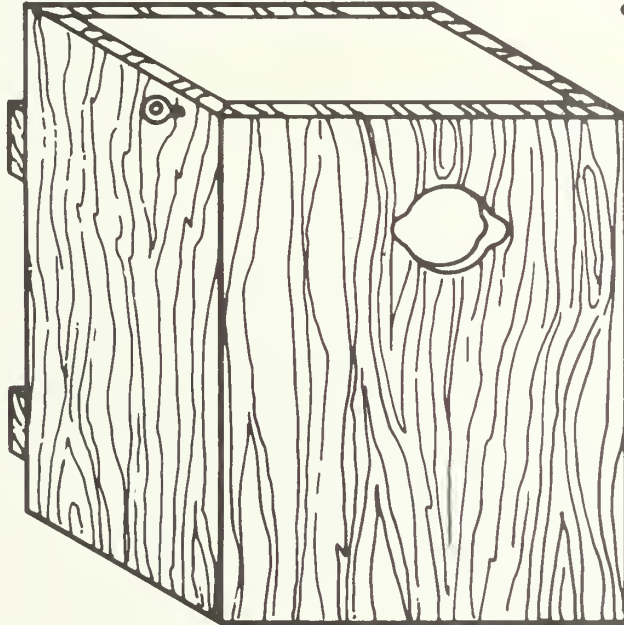
osprey would have a clear view of the lake for food gathering.

Gregg Mangan is a wildlife biologist for the Bureau of Land Management's Clearlake Resource Area in Ukiah, Calif.

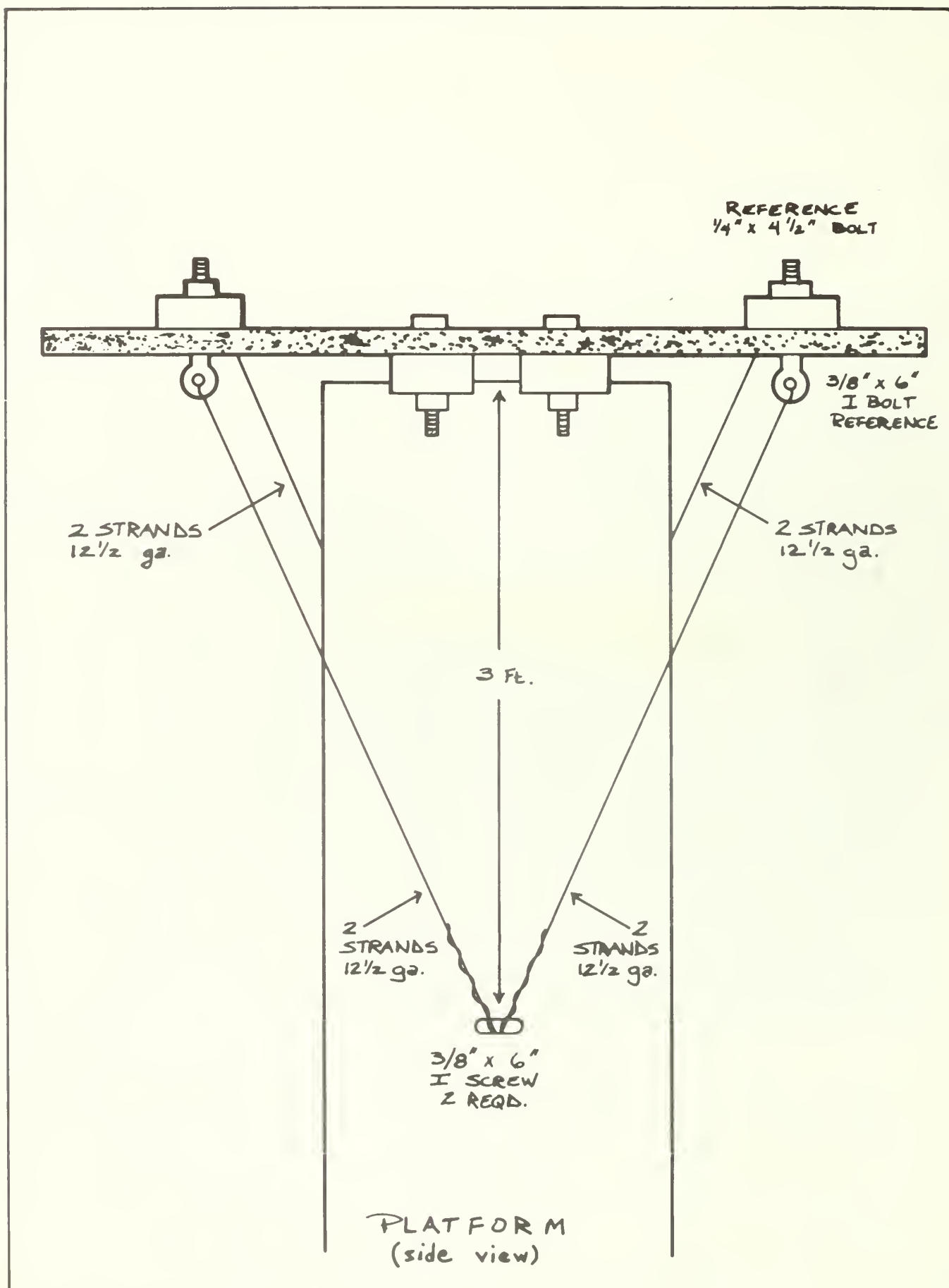
This article is reprinted from the February 1985 issue of BLM's *Newsbeat*.



It is important that the opening be cut to this exact size:  
Measuring 3" from top to bottom  
and 4" from side to side



## NESTING BOXES





# Trash Can Holder



Maintenance Repair Worker Edwin Matthews from the Sarasota (Fla.) County Parks and Recreation Department designed this inexpensive wood structure which conceals a trash can and

holds the can in place to prevent tipping. Constructed of pressure-treated yellow pine, the trash can holder complements other rustic wood structures on the site. Materials for this holder cost approxi-

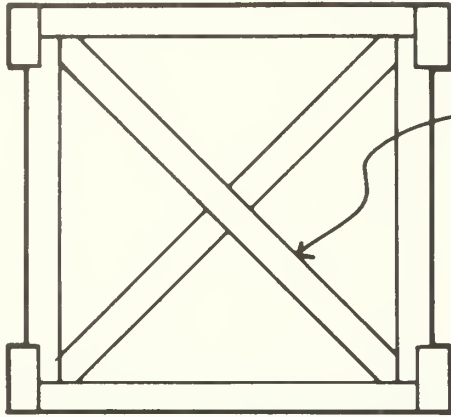
mately \$12.50.

Our thanks to Robert K. Conn, Superintendent of Parks, Sarasota County Parks and Recreation Department, for sharing this idea with DESIGN subscribers and readers.



## DESIGN . . . A publication of the Park Practice Program

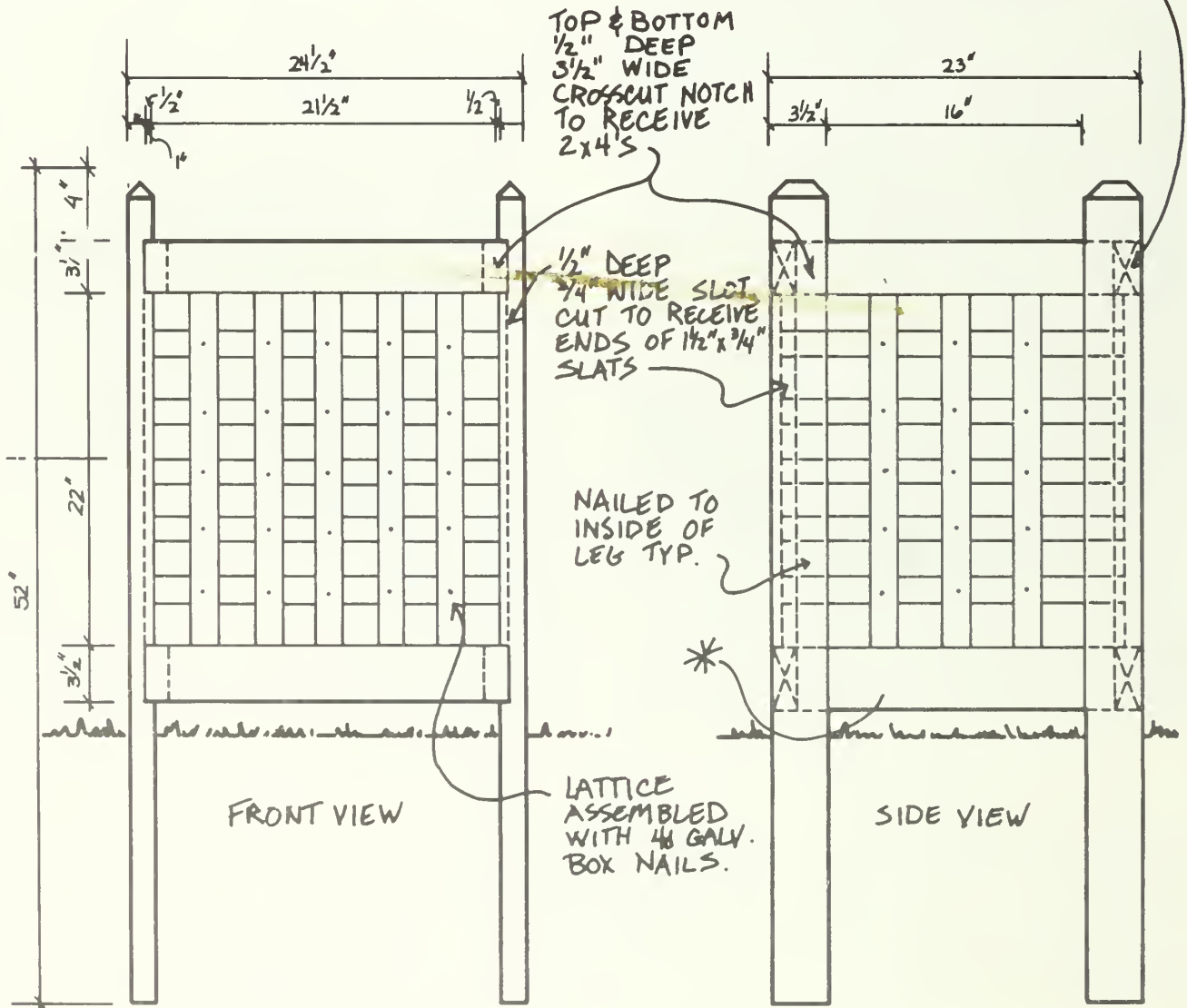
Trash Can Holder		Contributed by Robert K. Conn, Supt Sarasota Parks Dept
Index	Summer 1986	
<b>B-3878</b>	Control <b>N-1684-B</b>	



PLAN VIEW

2x4'S NOTCHED IN THE MIDDLE & CROSSED AT THE BOTTOM OF THE HOLDER

2x4 FRAMING ASSEMBLED WITH 16d GALV. BOX NAILS



## TRASH CAN HOLDER DETAIL

PARKS & RECREATION DEPT.  
SARASOTA COUNTY, FL.