

I 29.124:989

1989 Annual Report of the R...

# Rivers and Trails Conservation

PUBLIC DOCUMENTS  
DEPOSITORY ITEM  
JUN 12 1990  
CLEMSON  
LIBRARY

Clemson University



3 1604 019 688 599



1989 Annual Report  
of the Rivers and  
Trails Conservation  
Programs

U.S. Department  
of the Interior

National Park Service



# 1989 Project Cooperators

## NATIONAL COOPERATORS

American Hiking Society  
American Rivers  
American Trails  
Harvard University, Kennedy School Public  
Space Partnership Program  
National Association of State  
River Conservation Programs  
Pennsylvania State University  
Rails-to-Trails Conservancy  
Regional Plan Association of New York  
Virginia Commonwealth University  
The Walkways Center

## REGIONAL COOPERATORS

### Major Project Cooperators in FY 89

#### Alaska Region

Alaska Department of Fish and Game  
Alaska Department of Natural Resources  
Alaska Geological and Geophysical Survey

#### Mid-Atlantic Region

Allegheny Highland Trail Study Task Force  
Association of New Jersey Environmental  
Commissions  
Ausable River Study Task Force (NY)  
Blair County Rails-to-Trails Association (PA)  
Bucks County Conservancy (PA)  
Bucks County Department of Parks and  
Recreation  
Bucks County Planning Commission  
Connecticut Rivers Advisory Committee  
Connecticut Department of Environmental  
Protection  
Delaware and Raritan Canal Commission  
Delaware and Raritan Greenway  
Essex County, NY  
Friends of the Delaware Canal  
Greenbrier River Planning Council (WV)  
Hoosic River Watershed Association (MA)  
Horse-Shoe Trail Club  
Lackawanna River Conservation Association  
Leesburg/Loudoun County Greenway  
Advisory Committee  
Loudoun County, VA  
Louisiana State Scenic Rivers Program  
Maryland Department of Natural Resources  
Massachusetts Department of  
Environmental Management  
New Jersey Department of Environmental  
Protection  
New York State Department of  
Environmental Conservation  
Northern Virginia Regional Park Authority  
Northampton County Department of Parks  
and Recreation, PA  
Pennsylvania Nature Conservancy  
Pioneer Valley Planning Commission (MA)  
Schuylkill River Greenway Association (PA)  
Tennessee Department of Conservation  
Town of Leesburg, VA  
U.S. EPA (Delaware Estuary Program)  
Watershed Association of the Delaware River  
West Virginia State Heritage Task Force  
West Virginia Department of Natural  
Resources  
Wildlands Trust

#### Midwest Region

Illinois Department of Conservation  
Indiana Department of Natural Resources  
Meramec River Recreation Association (MO)  
Mississippi Headwaters Board (MN)  
Northwestern Indiana Regional Planning  
Commission  
Ohio and Erie Canal Conservation Coalition  
Open Lands Project, Chicago, IL

#### North Atlantic Region

Appalachian Mountain Club Center for  
Rural Massachusetts  
Cesar Pelli and Associates  
City of Salem, MA  
Connecticut Department of Environmental  
Protection  
Connecticut Department of Fisheries  
Countryside Commission for England and  
Wales  
D and H Canal Coalition  
D and H Canal Historical Society  
Farmington Canal Rail-Trail Association  
Green Mountain Club  
Groton, CT  
Hamden, CT  
Hudson River Access Forum  
Hudson River Greenway Coalition  
Ledyard, CT  
Maine Audubon Society  
Maine Rivers Program, Department of  
Conservation  
Merrimack River Watershed Council  
New Hampshire Department of  
Environmental Services  
New Hampshire Office of State Planning  
New Hampshire Parks and Recreation  
Department  
New Hampshire Rivers Campaign  
New York-New Jersey Trail Conference  
New York Parks and Conservation  
Association  
North Stonington, CT  
Pemigewasset River Council (NH)  
Portland Shoreway Access Coalition (ME)  
Quebec Labrador Foundation/Atlantic  
Center for the Environment  
Salem Heritage Partnership  
Salem Maritime NHS  
Scenic Hudson, Inc.  
Society for Protection of New Hampshire  
Forests  
Stonington, CT  
Student Conservation Association, Inc.  
Sudbury Valley Trustees (MA)  
The River Watch Network  
The Walkways Center  
Trout Unlimited  
U.S. Army Corps of Engineers  
U.S. Forest Service Northern Forest Lands  
Study Team  
U.S. Soil Conservation Service  
Vermont Agency of Natural Resources  
Vermont Land Trust

#### Pacific Northwest Region

City of The Dalles, OR  
Idaho Department of Parks and Recreation  
Idaho Trails Council  
Oregon Parks and Recreation  
Port of The Dalles, OR  
Skykomish Scenic River Advisory Board  
Snohomish County Parks and Recreation  
Department  
The Dalles Riverfront Project Advisory  
Committee  
U.S. Forest Service  
U.S. Bureau of Land Management

University of Washington  
Wasco County Planning and Development  
Office, OR  
Washington State Scenic Rivers Program

#### Rocky Mountain Region

Bear River Project, Inc. (WY)  
Black Hills Rails-to-Trails Association (SD)  
Boulder County, CO  
City of Evanston, WY  
City of Grand Junction, CO  
City of Greeley, CO  
Colorado Division of Parks  
Colorado Water Conservation District  
Crystal River Steering Committee (CO)  
Lions Club of Grand Junction, CO  
North St. Vrain Advisory Committee (CO)  
Park City Municipal Corporation (UT)  
San Miguel County, CO  
San Miguel County Trails Advisory Board  
State of South Dakota Division of Parks and  
Recreation  
State of Utah Division of Parks and  
Recreation  
Walkways West  
Waterfront Commission (Grand Junction,  
CO)  
Weld County, CO

#### Southeast Region

Florida Department of Natural Resources  
Florida Resource and Environmental  
Analysis Center  
Florida State University  
Kentucky Department for Environmental  
Protection

#### Southwest Region

Louisiana State Department of Wildlife and  
Fisheries  
Salado Creek Foundation (TX)

#### Western Region

Arizona State Parks Board  
Bay Area Ridge Trail Council (CA)  
California State Department of Parks and  
Recreation  
Chino Hills (County Service Area), CA  
City of Chula Vista, CA  
City of Colton, CA  
City of Corona, CA  
City of Highland, CA  
City of Huntington Beach, CA  
City of Loma Linda, CA  
City of San Bernardino, CA  
City of San Diego, CA  
City of Redlands, CA  
City of Rialto, CA  
City of Riverside, CA  
Friends of the Santa Margarita River (CA)  
Hawaii Department of Land and Natural  
Resources  
Orange County, CA  
Otay Valley Regional Park Citizens Advisory  
Committee (CA)  
Riverside County, CA  
Sacramento County Department of Parks,  
Rec. and Open Space  
San Bernardino County, CA  
San Diego County, CA  
Santa Ana River Coordinating Council, CA  
The Nature Conservancy  
University of Hawaii



# Rivers and Trails Conservation

The National Park Service provides national leadership and assistance on federal, state, and local efforts to protect rivers and establish trails.

The Service's river and trail activities are authorized under the Wild and Scenic Rivers Act (P.L. 90-542) and the National Trails System Act (P.L. 90-543). They include three types of activity:



## Rivers Policy

The Service works with federal and state agencies and the private sector to protect the Nation's outstanding wild, scenic, and recreational rivers. The Service develops policy recommendations for expansion of the federal Wild and Scenic Rivers System and improved management of already-designated rivers, as well as options for non-federal river protection. States are encouraged to apply for National Wild and Scenic Rivers System designation for state-managed rivers. The Service maintains the Nationwide Rivers Inventory, which identifies potential river resources for study. It consults with other Federal agencies to mitigate the impact of their programs on important river values. The Service is also active in representing recreational values of rivers in the relicensing proceedings for hydro-power dams.



## Trails Policy

The Service develops strategies and plans to help establish a nationwide system of trails and recreation corridors. This is accomplished by gathering current data on trail resources nationwide and by developing plans at state or regional levels. The Service, working with other agencies and the private sector, has developed a nationwide agenda for regional, statewide, and metropolitan trail corridor resource assessments and plans. The Service provides assistance throughout the country in identifying and converting abandoned railroad corridors to public trails.



## State and Local Assistance (Rivers and Trails Conservation Assistance)

The Service offers technical assistance to States, local governments, and non-profit organizations to protect rivers and establish trails on lands outside of national parks and forests. Assistance is provided at two levels: statewide; to assess and plan for a broad array of river and trail resources, and local; to assess and plan for the protection or management of a river or trail corridor. The Service conducts training, workshops, consultations, and demonstration projects on conservation methods and also offers guidance on building a public consensus, economic revitalization, developing publications, and fundraising.

# National Rivers Policy

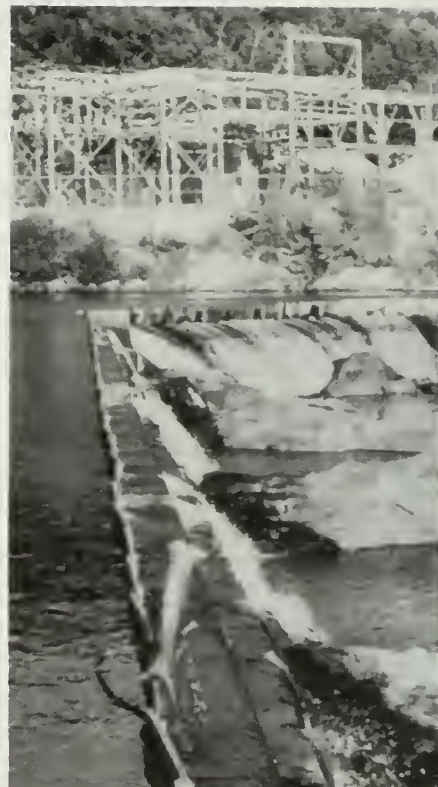
## 1989 Initiatives and Accomplishments

The National Rivers Policy program sponsored (with others) the 20th Anniversary celebration of the Wild and Scenic Rivers Act in November, 1988 (see box, p. 13). Said one participant: "All of you . . . should be justifiably proud of staging one of the most important, timely, and thought-provoking events in many a year. The enthusiasm of everyone present, including many 'battle-scarred veterans' of the conservation movement and/or land managers, was contagious. . . . You've brought back momentum to the side of rivers."

At the conference National Park Service Director William Penn Mott, Jr. announced a river conservation agenda and goals for the NPS designed to put the Service in the leadership position nationally by 1993. As an initial step, the Rivers Policy staff produced an appendix to the Service's Resource Management Guidelines to assist in implementing the identification, evaluation, designation and management of potential Wild and Scenic Rivers in National Park System areas.

The Nationwide Rivers Inventory (a list of potential national Wild and Scenic Rivers) was maintained during the year, with applications for additions to the Inventory reviewed and processed. Rivers identified in Bureau of Land Management and U.S. Forest Service land management plans are likely future additions to the Inventory. Exploratory work has also been initiated with the Corps of Engineers, Farmers Home Administration, Interagency Task Force on Floodplain Management, and U.S. Environmental Protection Agency towards developing strategies and agreements for avoiding, minimizing, and mitigating adverse impacts of those agencies' activities on Inventory rivers.

Rivers policy staff also enabled States to protect outstanding rivers by assisting them in making requests for federal designation under Section 2(a)(ii) of the Wild and Scenic Rivers Act. This provision allows the Secretary of the Interior to give national protection to State-protected rivers and, during 1989, the Middle Fork of the Vermilion River in Illinois was designated (see box, p. 7). River policy staff also worked with the State of North Carolina to examine and report on development threats to the New River corridor, a state-managed river added to the federal system in 1976.



The NPS seeks to balance the many beneficial uses of rivers through its Rivers Policy activities, as here on the Merrimack River in New Hampshire. Credit: American Rivers, Inc.

# National Trails Policy



Diverse uses thrive on trails such as the W & OD Trail (a converted rail line in northern Virginia). NPS Trails Policy staff are working with states, local governments, and the private sector to develop a nationwide system of recreational corridors. Credit: Maria Stenzel

## 1989 Initiatives and Accomplishments

During 1989, the Service took the initiative in three trail program areas:

**Planning**—The NPS worked with a national task force composed of representatives of trail interests throughout the country to develop a national agenda for trails. The overall objective is an integrated system of trails throughout the country, involving Federal, state, local, and the non-profit sector. The agenda is now in draft, and several agencies and non-profit organizations are cooperating with the NPS in its implementation.

In cooperation with the Walkways Center, NPS is developing model community walking programs in Annapolis, Maryland, Fredricksburg, Virginia, Salem, Massachusetts, and Minneapolis, Minnesota. A product of this effort will be the publication of a walkways handbook as a resource for community planning efforts. The Branch is also working with Harvard University and the Regional Plan Association of New York to develop directories of land conservation techniques that specifically apply to the New England states and the tri-state region of the New York metropolitan area.

**Rails-to-Trails**—The NPS conducted a series of eleven one-day seminars throughout the country for public officials. Entitled "Creating Trails from Abandoned Railroad Corridors," the seminars focused on procedures and tools for conversion of abandoned rail lines and were a cooperative project with the Rails-to-Trails Conservancy.

Also in cooperation with the Rails-to-Trails Conservancy, NPS conducted a study of the 1978 Rails-to-Trails grant program which provided grants for acquisition and/or development to nine rail-trail projects. The study, to be published in 1990, has concluded that the grants were critical to the subsequent completion and popularity of the nine trails.

NPS conducted a national Rails-to-Trails Conference in cooperation with the Rails-to-Trails Conservancy in Dayton, Ohio in July, 1989.

**Nationwide Trails Inventory, Trails of the Mid-Atlantic Region**—The NPS published and distributed a directory identifying the multitude of trail opportunities available to the general public in the Mid-Atlantic states. The Directory is a product of the Nationwide Trail Inventory. (See "Publications," page 18).

Additional cooperative activities with states are described in the projects section of this report.



# Rivers and Trails Conservation Assistance Program

## 1989 Initiatives and Accomplishments

During 1989 the Rivers and Trails Conservation Assistance Program continued its strong growth with the addition of 14 new staff in its nine regional offices and 80 projects underway. These included 10 statewide assessments of rivers or trails, 55 river or trail corridor projects, and 15 publications or other developmental projects. State-by-state projects and specific conservation successes are described in the following pages.

Highlights of the year nationally included:

- **Multi-Objective River Corridor workshops**—In response to a Congressional request, the NPS conducted a series of fact-finding workshops across the nation to identify a broader view for planning, managing, and using rivers and their adjacent lands. With leadership from the NPS's Mid-Atlantic Regional Office and co-sponsorship of numerous federal, state, local, and private organizations, six workshops were held in January, 1989 (see projects section and map for workshop locations). The goal for the workshops was to hear from participants on how diverse objectives for a river corridor (e.g., flood protection, navigation, water supply, wildlife habitat, recreation, historic preservation) can be achieved simultaneously. Responses from over 600 participants were compiled into a single summary and recommendations have been used to develop draft legislation on new approaches to river planning and management.

- **Publications**—Draft versions of three national publications were produced: a national "River Conservation Directory," a "Handbook of State Rivers Conservation Programs," and a case book of the "Economics of Greenways" (produced with Western Regional Office). These publications will serve as references for NPS staff, other agencies, and the general public in protecting resources.

In addition, the year was spent on strengthening the program institutionally and preparing for the challenges ahead. Initiatives included preparation of a draft Five-Year Goal Statement and Plan for the Rivers and Trails programs, including project selection criteria and a formal process for project requests. Each regional office is preparing its own long-range plan as part of the Five-Year plan. As the program grows, effective training on the technical aspects of river and trail conservation work becomes increasingly important and three nationwide training classes were held in 1989 to meet that need.



Cooperative projects conducted under the Rivers and Trails Conservation Assistance Program usually include hands-on participation by landowners and other citizens in inventorying their local resources and selecting alternatives for action. Credit: Maria Stenzel

# 1989 Project Highlights

Conservation projects conducted under the Rivers and Trails Conservation Assistance program during 1989.

**A Note on "Conservation Successes":** The Rivers and Trails Conservation Assistance program emphasizes concrete, tangible conservation results. Each year, NPS-assisted projects produce measurable achievements:

- Specific, new protection for a river or trail corridor (e.g., a formal designation, the acquisition of a parcel of land, enactment of new zoning protections, or on-the-ground opening of a new route);
- Passage of new protective legislation;
- Formation of a new stewardship organization for a river or trail;
- New funding for a project leveraged by NPS involvement.

Such successes may often occur months or even years after direct NPS assistance has ceased but are recognized in this report as the fruit of program's work.

## ALASKA

### Susitna Basin Recreation Rivers Plan

As a component of the plan for six state-designated rivers, the NPS assisted in completing instream flow studies, inventoried recreation resources, and developed and conducted a user survey of each river corridor. The Alaska Department of Natural Resources is now using these products to develop management alternatives. A final plan with recommendations will be adopted in 1990.

## ARIZONA

### Arizona Rivers Assessment

The NPS and Arizona State Parks are coordinating a comprehensive statewide assessment of Arizona's rivers and riparian areas. Phase one is underway, evaluating fish, wildlife, riparian vegetation, stream hydrology, geology and cultural resources.

*"Their technical expertise has made my job much easier. Having ready access to information and materials from other states has saved immeasurable amounts of time and reduced "spinning of wheels". The Conservation Assistance Program has brought to the project a wealth of creative ideas and the spectrum of talents and experience have been expanded exponentially."*

—Tanna Thornburg, Streams and Wetlands Coordinator, Arizona State Parks

## CALIFORNIA

### Bay Area Ridge Trail

The NPS provided ongoing assistance to the Bay Area Ridge Trail Council to help realize its goal of a 400-mile trail around San Francisco Bay. Trail celebrations were held to dedicate seventy-one miles of opened, signed trail in six counties. Trail guides have been produced covering 32 miles of trail.

### Cosumnes River

The NPS bolstered efforts to protect the Cosumnes River by producing a poster highlighting its outstanding values. The publicity was part of a cooperative effort to raise awareness of the significance of this 100-mile river network, the only river system in the middle Sierra without significant water impoundments.

### Multi-Objective River Corridor Workshop (San Francisco)

With leadership from the NPS's Mid-Atlantic Regional Office and co-sponsorship of numerous federal, state, local, and private organizations, a series of six workshops was held in January, 1989. The workshops focused on how diverse objectives for a river corridor (e.g., flood water retention, water quality improvement, recreation, wildlife habitat) can be achieved simultaneously. Responses from over 600 participants nationwide were compiled into a summary and recommendations have been used to develop draft legislation on new approaches to river planning and management.

### Otay Valley Regional Park

The NPS coordinated the planning efforts of several levels of local government and a citizens group for a linear park along the Otay River. NPS developed a cooperative workplan and a visitor's guidebook which will facilitate planning for the park. The park will link San Diego Bay with the Jamul Mountains eleven miles to the east.

### Rails-to-Trails Seminar (Sacramento)

The NPS and the Rails-to-Trails Conservancy co-sponsored a series of eleven one-day seminars entitled "Creating Trails from Abandoned Railroad Corridors." Tailored for public officials, the seminar series has resulted in commitment at all levels of government to acquire and convert rail corridors into trails.

### Santa Margarita River Strategy

The NPS is assisting Friends of the Santa Margarita River with public outreach efforts and a resources inventory. The goal is to advance the protection of the southern California river's highly significant wildlife, riparian and open space values. The NPS worked with San Diego County to incorporate the river corridor into its Comprehensive Open Space Plan.

## COLORADO

### Cache La Poudre River Trail Plan

A draft report on the suitability of various trail routings was completed for a 25-mile trail between Greeley and Fort Collins. Suitability data, as well as digitized map and satellite data, were entered into a geographic information system (GIS) for the NPS's first test of applicability of GIS technology to river and trail corridor planning.

### Crystal River Management Plan

The NPS, coordinating with the Crystal River Steering Committee, designed a survey to evaluate a range of conservation and development issues in the river corridor. The survey results will be used in developing a management plan for this highly scenic 60-mile segment of river on Colorado's west slope.

### Grand Junction Riverfront Plan

In 1989 the NPS helped complete a revitalization plan for a segment of the Colorado River at its confluence with the Gunnison River. The City of Grand Junction has moved forward in implementing the plan by purchasing two of four salvage yards in the floodplain and constructing an additional 1000 feet of trail along the riverfront.



# 1989 Project Highlights

## Conservation Success:

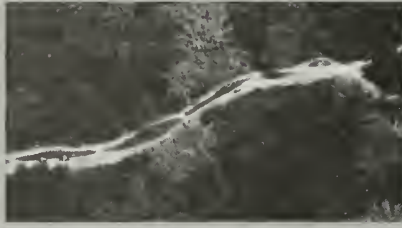
### Santa Ana River Corridor Trail Moves Forward

Where could the 16 million people of Southern California go to find a 112-mile continuous greenway? To the Santa Ana River Corridor Trail, which is being planned with the help of the NPS.

Following the vision for the greenway presented by the NPS in a 1988 concept plan, sixteen agencies signed a joint powers agreement to establish and manage the trail. With NPS assistance, they then jointly raised over \$100,000 to hire a consultant to complete a master plan for the trail system.

To celebrate the year's accomplishments, a 5-day "Crest-to-Coast" event was held in September. Equestrians, hikers, and cyclists traversed the corridor from the San Bernardino Mountains to the Pacific Ocean. When completed in July 1990, the Master Plan will provide for trails and support facilities for multiple uses.

"The participation of NPS in this project increased the leverage that the local agencies had in requesting additional funding from the state legislature for other projects along the Santa Ana River corridor."  
—Barbara Cram Riordan, Chairman, Board of Supervisors, San Bernardino County, California



Riparian corridors make ideal greenways. Here the Santa Ana River corridor shows its potential to provide wildlife habitat as well as mixed recreational uses for 16 million nearby residents of Southern California. Credit: Nancy Stone

### Multi-Objective River Corridor Workshop (Denver)

(See California listing)

### North St. Vrain Creek

The NPS assisted the North St. Vrain Advisory Committee in developing alternative management strategies for this 20-mile undeveloped, scenic river segment in the Front Range of the Rockies. With NPS help, the Committee drafted proposed legislation recommending the river segment for addition to the National Wild and Scenic River System.

### Rails-to-Trails Seminar (Denver)

(See California listing)

### San Miguel County-wide Trail Plan

NPS assisted the San Miguel County Trails Advisory Board in developing a trail plan for the Telluride area, a major tourist mecca. The plan is the first phase of a county-wide trails plan for San Miguel County in southwest Colorado.

## CONNECTICUT

### Connecticut Statewide Rivers Assessment

In April, 1989, the State and the NPS signed a memorandum of agreement to conduct an assessment of the State's significant rivers. The purpose of the assessment is to develop a comprehensive base of information from which to make better decisions about beneficial uses and appropriate management of the State's rivers and related resources.

### Farmington Canal Rail-Trail

The NPS boosted the trail planning process for the historic Farmington Canal corridor by helping to establish an Advisory Committee for the Hamden-Cheshire segment, by conducting a recreational feasibility study of the canal/rail corridor, and by providing design assistance. The Town of Hamden has agreed to purchase 8 miles of the trail.

### Mystic River Watershed Greenway Plan

The NPS completed a protection plan and action agenda with communities along the Mystic River in southern Connecticut. A new "Mystic River Watershed Association" was formed and several recommendations from the plan, including a volunteer water quality monitoring program and installation of a fish ladder, were undertaken.

## FLORIDA

### Florida Rivers Assessment

The NPS, Florida Department of Natural Resources, and Florida State University completed the data collection phase of this study of 50 of Florida's most significant rivers. A computer information system has been developed which will serve as a model for state-wide river assessments nationwide.

### Rails-to-Trails Seminar (Orlando)

(See California Listing)

## GEORGIA

### Multi-Objective River Corridor Workshop (Atlanta)

(See California Listing)

## HAWAII

### Hawaii Streams Assessment

The NPS is assisting in an inventory and evaluation of Hawaii's stream-related resources. The project team is gathering data with specialists in riparian, geologic, recreational and cultural resources. Committees from each of the major islands ensure a comprehensive statewide base of information.

## IDAHO

### Idaho Centennial Trail Plan

The NPS provided guidance and direction on the trail planning process and assisted in the selection of a preliminary trail route. The proposed route will extend from the Nevada-Idaho line to the Canadian border (a distance of approximately 1000 trail miles).



# 1989 Project Highlights

## ILLINOIS

### Chicago Regional Trails

The NPS met with several agencies to develop an inventory of trails and to identify potential corridor linkages in the greater Chicago area.

## INDIANA

### Northwest Indiana Regional Trails Plan

The Northwestern Indiana Regional Planning Commission, Indiana Department of Natural Resources and the NPS prepared a plan identifying trail opportunities in the three counties along Lake Michigan.

### Rails-to-Trails Seminar (Indianapolis)

(See California Listing)

## KENTUCKY

### Kentucky Rivers Assessment

The NPS helped the Kentucky Department for Environmental Protection develop a methodology for its rivers assessment which will examine all significant streams in the state. The NPS assisted in producing a brochure which lists the 605 study rivers, requests nominations of additional rivers for the study, describes the study process, and details the 11 resource categories to be evaluated in the assessment.

" . . . Without it [NPS RTCA program], Kentucky and many other states stand to forfeit outstanding opportunities for developing the recreational and economic potential of their most valuable natural resources."

—Jack A. Wilson, Director, Kentucky Division of Water

## LOUISIANA

### Louisiana State Rivers System Assessment

In 1989, the Governor of Louisiana and the NPS signed an agreement to conduct an assessment of 52 rivers and river segments within the Louisiana Scenic Rivers System. The NPS provided assistance to the State Scenic Rivers Program in developing a methodology for assessing Louisiana's rivers. The NPS helped to form several working committees and assisted them in collecting and evaluating resource information.

## MAINE

### Fore River Trail Plan

The NPS helped with the organization and formation of the Portland Shoreway Access Coalition and is providing assistance in mapping and trail design for a three-mile trail along the north bank of the Fore River in Portland, Maine. Half of the trail has been authorized by the City for development.

### Machias River Conservation Plan

The NPS assisted the Quebec Labrador Foundation/Atlantic Center for the Environment in the preparation of a conservation agenda and resource assessment for the Machias River, a designated state-significant river with extended sections currently for sale.

### Northern Forest Lands Study

The NPS contributed 3 sections to the Congressionally-authorized Northern Forest Lands Study (an assessment of privately-owned, large-parcel forest land in northern

New England and New York). The NPS sections addressed public ways, rivers, and the relevant programs of the NPS.

## MARYLAND

### Chesapeake Bay Project

The NPS worked with Maryland Department of Natural Resources and other agencies to determine a potential role for NPS in the ongoing, multi-state effort to conserve and manage the Chesapeake Bay. As a result, the NPS is currently developing a comprehensive program to assist local watershed groups with the preparation and implementation of plans for all tributaries of the Chesapeake Bay.

## Conservation Success:

### Illinois' Middle Fork, Vermilion River added to Wild and Scenic River System

One of Illinois' finest streams, the Middle Fork of the Vermilion River, was added to the National Wild and Scenic Rivers System in 1989 as a State-administered component. The designation was the culmination of a 20-year effort by local and State conservation groups to permanently protect the scenic, wildlife, and recreational values of this prairie stream which has experienced little of the usual agricultural impacts. The designation also permanently sidelined efforts to impound the river for recreation and water supply.

The 17.1-mile segment of the Middle Fork was added under section 2(a)(ii) of the Wild and Scenic Rivers Act under which the Secretary of the Interior can designate river as a component of the national system upon the request of the governor of the State. Illinois Governor James Thompson requested designation in 1987; the final decision came in May, 1989. Extensive assistance for the designation, including field inspection of the river, analysis of the river's eligibility, and technical assistance to the State in preparing the application, came from the NPS.



An outstanding example of an Illinois prairie stream, the Middle Fork of the Vermilion River is the latest addition to the National Wild and Scenic Rivers System. Credit: National Park Service

# 1989 Project Highlights

## MASSACHUSETTS

### Concord/Sudbury/Assabet Rivers Assistance

The NPS provided support and information to the Sudbury Valley Trustees and the eight towns in the river system as they consider Wild and Scenic River Study status for these rivers. To date, all eight towns have passed resolutions at town meetings endorsing the study; a federal Wild and Scenic River Study bill is expected to be introduced in the spring of 1990.

### Hoosic River Assistance

The NPS worked with local cooperators to develop a river strategy which includes expanding the current citizens water quality program, preparing a recreational guide for use of the river, and inventorying information on riparian landownership.

### Multi-Objective River Corridor Workshop (Boston)

(See California listing)

### Salem Walkways Project

The NPS, as an initial step in an effort to revitalize and expand the Salem Heritage Trail, formed an Advisory Committee and developed a map of opportunities for the City's Master Plan.

### Saugus Iron Works Nature Trail

A nature trail located within the boundaries of the Saugus Iron Works National Historic Site was designated a National Recreation Trail by the Secretary of the Interior in May, 1989. NPS assisted in the review and application for the designation.

### Westfield River Greenway

The NPS assisted the Pioneer Valley Planning Commission in its pursuit of designation for the Westfield as a state-administered component of the National Wild and Scenic Rivers System. As part of the Westfield Greenway Plan, NPS also assisted in developing a model river protection zoning bylaw. In 1989, two towns adopted river protection zoning bylaws based on the NPS model; the remaining four towns are in the process of taking similar actions.

## MICHIGAN

### Rails-to-Trails Seminar (Lansing)

(See California listing)

## MINNESOTA

### Upper Mississippi Protection Strategy

The NPS prepared an options paper on river protection zoning to assist the Mississippi Headwaters Board in its efforts to update the management plan for the upper 460 miles of the Mississippi (see "Publications").

## MISSOURI

### Meramec River Outreach Project

Four workshops were held with the Meramec River Recreation Association to determine the concerns of residents along the 108-mile river. The Meramec River flows through the St. Louis metropolitan area and provides recreation opportunities for the area's 1.5 million people. A follow-up plan will be prepared during 1990.

## NEBRASKA

### Multi-Objective River Corridor Workshop (Omaha)

(See California listing)

### Omaha/Council Bluffs Trails Workshop

An NPS-sponsored workshop resulted in the formation of a new Task Force of agencies focusing on trails in the Omaha/Council Bluffs area.

## NEW HAMPSHIRE

### Merrimack River Wild and Scenic Study Report

The NPS provided assistance to the State and five communities working on protection status for the upper Merrimack. NPS helped develop a slide show to aid in explaining the purpose of federal and State river protection programs. The slide show has been presented at several forums and has helped gen-

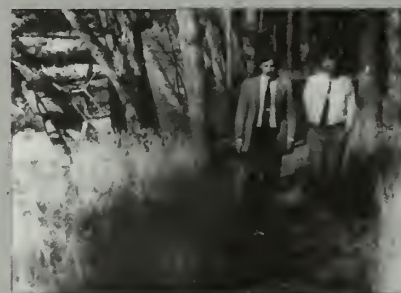
## Conservation Success:

### Pennacook Trail Established

In 1988 and 1989, the NPS worked with the Massachusetts Department of Environmental Management, the Andover Village Improvement Society, the Merrimack River Watershed Council, and the Appalachian Mountain Club to develop a 10.5 mile trail along the Merrimack River linking Lowell National Historic Park and Lawrence State Heritage Park. The numerous boundaries and jurisdictions the trail route had to traverse made the project especially challenging.

Completed in 1989, the trail plan identified significant resources and land ownership, selected a route, and developed a protection strategy and alternatives for management. A promotional brochure (with printing paid for by a local bank) was also produced.

When National Park Service involvement was completed, a permanent cooperative management system involving several jurisdictions had been put in place and most of the trail was on the ground and available for public use. Activities for implementation of the plan are moving ahead.



With cooperative planning from a number of Massachusetts jurisdictions and private interests, a new footpath—the Pennacook Trail—now follows the Merrimack River through riparian woodlands for 10.5 miles. Credit: National Park Service.



## Conservation Success:

### Allegheny Highlands Trail Gains Support

The Allegheny Highlands Trail is currently a 68-mile abandoned railroad right-of-way extending from Cumberland, Maryland to Confluence, Pennsylvania. During 1989, the NPS, in concert with the Rails-to-Trails Conservancy and several local agencies and organizations, conducted a feasibility study of the corridor for possible trail use. Through an extensive public involvement process, the major issues that need to be addressed before the railroad line can be converted into a trail were identified. Through its public workshops and advisory group meetings, the project received significant media attention which led to a surge in popularity of trails, and rail-trails in particular, in Western Maryland. The America's Industrial Heritage Project has dedicated funds for design and engineering studies of the trail.

Local commitment to the project, too, has significantly increased. The Somerset County Rails-to-Trails Association is now involved in negotiations with CSX Railroad for state acquisition of the line, and the Somerset Chamber of Commerce is conducting a recycling drive which generates approximately \$300 a month for the Allegheny Highlands Trail.



Crossing the divide between the Atlantic and Mississippi drainages, a 68-mile abandoned rail corridor will soon become the Allegheny Highlands Trail. Strong local efforts to develop the rail-to-trail conversion have been assisted by the NPS. Credit: Somerset Conservation District

erate public support for Wild and Scenic and State programs. A federal Wild and Scenic study bill was introduced in May, 1989.

### New Hampshire Rivers Management and Protection Program

The NPS assisted with the development of the State's new rivers program by helping the Rivers Advisory Committee to develop the format, classification criteria, and process for nominating rivers to the state program. NPS also prepared a flier describing the State program and worked with the State Rivers Coordinator to promote the program.

### Northern Forest Lands Study

(See Maine listing)

### Pemigewasset River Wild and Scenic Study Support

The NPS provided support and guidance to the Pemigewasset River Council and the nine towns along the river which are seeking

a federal Wild and Scenic River Study. The NPS has produced a "Great Rivers of America" poster featuring the Pemigewasset to help increase local and regional awareness of the Pemigewasset's outstanding resource values. In August, a Wild and Scenic River Study bill was introduced in Congress.

## NEW JERSEY

### Great Egg Harbor River Inventory Amendments

NPS completed an evaluation of 15 tributaries of the Great Egg Harbor River and has submitted proposals to add the rivers, totaling 67 miles, to the Nationwide Rivers Inventory.

### Rails-to-Trails Seminar (Princeton)

(See California listing)

## NEW YORK

### Ausable River Study

NPS has initiated a river conservation strategy for this state-designated Wild and Scenic river by bringing ten Ausable municipalities formally into agreement to work together and by forming the Ausable River Study Task Force.

### D & H Canal Heritage Corridor Plan

The NPS completed planning maps and a brochure and helped in the formation of a new "D & H Canal Coalition." The Coalition will serve as a permanent group committed to the preservation and revitalization of the historic rail and canal corridor which joins the Delaware and Hudson Rivers.

### Hoosic River

(See Massachusetts)

### Hudson River Greenway

The NPS has worked cooperatively on several initiatives to promote and provide direction to one of New York State's major initiatives, the Hudson River Greenway. The NPS has completed a handbook entitled "Building Greenways in the Hudson River Valley: A Guide for Action"; has revised and produced a final Hudson River Public Access Report which discusses access opportunities along the tidal Hudson; and has helped establish a four-mile trail in Hyde Park, connecting Vanderbilt and Roosevelt National Historic Sites.

### Long Path Feasibility Study

The NPS, in cooperation with the New York-New Jersey Trail Conference, completed a draft feasibility study for relocating 36 miles of the Long Path along the Shawangunk and Kittatinny Mountains. Preliminary study findings have been submitted to the Study Advisory Committee.

### New York Rivers Study

NPS and the State of New York completed the first phase of a statewide rivers assessment which evaluated recreational boating and fishing resources and identified 26 river segments in the state providing the northeast with exceptional or unique recreational opportunities. As a result of NPS assistance with phase one of the project, the New York State Legislature and the State Department of Environmental Conservation have provided \$300,000 to conduct phase two of the project, an assessment of river-related natural and cultural resources.

### Northern Forest Lands Study

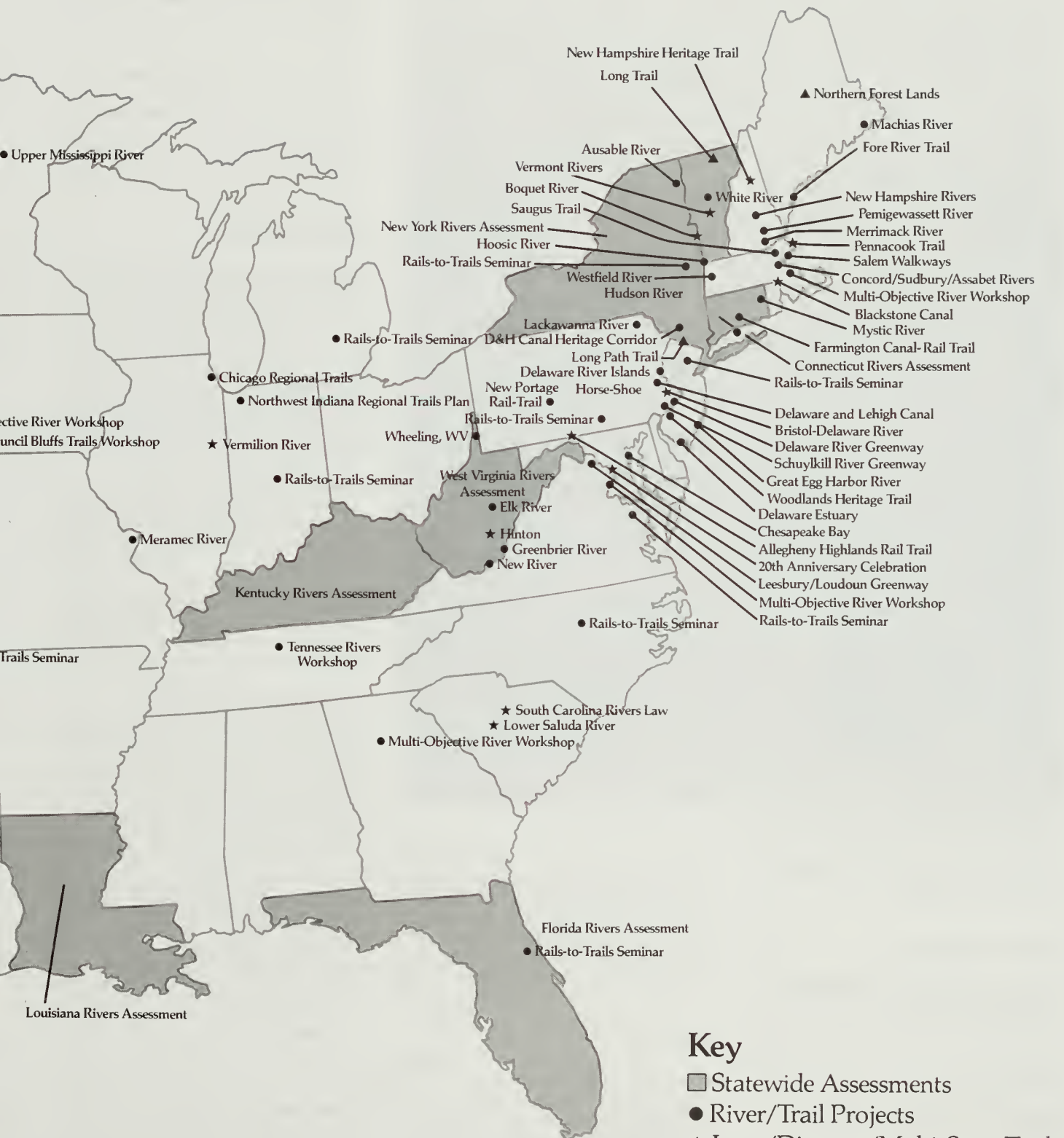
(See Maine listing)

# Rivers and Trails Conservation Assistance Program

## Project Highlights 1989







# 1989 Project Highlights

## Conservation Success:

### First segment of New Hampshire Heritage Trail Opens

In what has been described as "the most ambitious greenway undertaking in the country", the NPS joined forces in 1989 with the New Hampshire Division of Parks and Recreation to develop the 230-mile New Hampshire Heritage Trail. In July, Governor Judd Gregg opened the first 20-mile segment of the trail.

Authorized by the state legislature in 1988, the Heritage Trail will run from Massachusetts to the Canadian border, following river valleys for most of its route. Eventually the entire trail corridor will be in public ownership.

The NPS role has been to create (in consultation with the state) a process for trail development which was documented in a 50-page "Trail Development Workbook". The workbook provides guidelines for trail location, planning and management. In addition, the NPS has helped structure public meetings and workshops to build the community-level support on which the trail concept rests. In 1990, NPS will assist with trail development in three communities eager to participate in the program.

" . . . thank you for the Park Service's continued support and belief in the [New Hampshire Heritage] Trail as a model greenway project for America . . . our success would not have been possible without the outstanding technical assistance the team provided."

—Wilbur F. LaPage, Director, Division of Parks and Recreation, New Hampshire, and Member, President's Commission on Americans Outdoors



New Hampshire Governor Judd Gregg, NPS Deputy Regional Director Steve Lewis, and New Hampshire Parks Director Wilbur LaPage at the June signing of agreement to jointly plan the New Hampshire Heritage Trail. 20 miles of the Trail are now open. Credit: National Park Service

### Rails-to-Trails Seminar (Albany)

(See California listing)

## NORTH CAROLINA

### Rails-to-Trails Seminar (Raleigh)

(See California listing)

## OKLAHOMA

### Rails-to-Trails Seminar (Tulsa)

(See California listing)

### Trestle Pond Trail

A two-and-a-half mile loop trail administered by the U.S. Army Corps of Engineers was designated a National Recreation Trail (NRT) by the Secretary of the Interior in June, 1989. NPS assisted in review and recommendations regarding the designation.

## OREGON

### The Dalles Area Riverfront Improvement Project

The NPS assisted in the completion of The Dalles Area Riverfront Plan, a master plan and action strategy for riverfront improvement. The plan will guide the local commu-

nity's land use, development and policy proposals for a 10-mile stretch of the Columbia River within the Columbia Gorge National Scenic Area.

"This project has excited the whole community and we are looking forward to the future when . . . The Dalles again becomes a "River City."

—Scott McKay, Wasco County Commissioner (Oregon)

## PENNSYLVANIA

### Delaware and Lehigh Navigation Canal National Heritage Corridor

In 1988, Congress passed legislation creating the nation's third National Heritage Corridor along 70 miles of the historic Delaware and Lehigh Canal in Pennsylvania. In 1989, the NPS and several county and state agencies co-sponsored a one-day workshop featuring experts on heritage planning, canal restoration, and historic revitalization.

### Delaware Estuary Assistance

In 1989, NPS and the U.S. Environmental Protection Agency entered into an Interagency Agreement to work cooperatively on the National Estuary Program, specifically on projects in the Delaware Estuary. The NPS participated in the Delaware Estuary Management Conference and assisted with the development of a Comprehensive Conservation Management Plan for the Delaware Estuary.

### Delaware River Greenway

A confederation of 40 agencies and organizations joined together to develop a greenway strategy for the Delaware River and its major tributaries between the Delaware Water Gap and Bristol, Pennsylvania. In May, the NPS assisted in a one-day workshop to identify issues and goals. As a result, and with NPS assistance, the confederation formed a Steering Committee and five working committees, developed a work plan, and began pursuing funding for a staff person to begin demonstration projects.

### Delaware River Islands Study

The Delaware River Islands Study focused on fifty-six islands along the 185-mile segment of the river from the mouth of the Delaware Bay to Easton Pennsylvania. In 1989, NPS held a workshop on land trusts for the Delaware River Islands which was attended by over 30 landowners and river interests. In response to the Islands Study, hearings were held and a bill has been introduced which includes local, state and federal-level initiatives in riverine island conservation.



# 1989 Project Highlights

## Horse-Shoe Trail Study

NPS worked with the Horse-Shoe Trail Club to complete a protection plan which includes a strategy for putting, on the ground, a 140-mile hiking and equestrian trail linking Valley Forge National Historic Park and the Appalachian Trail.

## Lackawanna River Corridor Assistance

The NPS assisted with six workshops to identify river issues, prepared a report highlighting successful national examples of river revitalization and greenway conservation, and developed a river resource inventory for the 38-mile Lackawanna River which flows through 15 northeastern Pennsylvania communities. The NPS initiated coordination with the U.S. Army Corps of Engineers in ongoing flood-control planning on the Lackawanna.

## New Portage Trust Report

The NPS assisted local conservationists in conducting a workshop on conversion of a 12-mile railroad right-of-way to trail use. As a result, the Blair County Rails-to-Trails Association was formed and an agreement was reached with public officials to resolve issues regarding trails use on State Game Lands. The NPS completed a draft report with recommendations for development and maintenance of the trail.

## Rails-to-Trails Seminar (Harrisburg)

(See California Listing)

## Schuylkill River Forum

An NPS-assisted public forum showed strong citizen interest in a more comprehensive, multi-objective greenway plan for the Schuylkill River corridor. One result of the forum (and NPS consultation) is that the Schuylkill River Greenway Association is pursuing State Heritage Corridor designation for the river as part of the newly-created Pennsylvania Heritage Parks program.

## Woodlands Heritage Trail

A ten-mile trail network located within the historic Woodlands Cemetery and gardens in Philadelphia was designated a National Recreation Trail (NRT). NPS assisted in the review and application process for the designation.

## SOUTH DAKOTA

### Historic Burlington Northern Trail

The NPS Rails-to-Trails program staff helped develop a public involvement strategy and provided advice regarding the develop-


## Conservation Success:

### 20th Anniversary of Wild and Scenic Rivers Act Celebrated

The NPS, in cooperation with American Rivers, Inc., the USDA-Forest Service, and the Bureau of Land Management, sponsored a major conference in November, 1988 to celebrate the 20th Anniversary of the Wild and Scenic Rivers Act. Over 600 people attended and commitments were made by all the agency heads present to expand the Wild and Scenic Rivers system.

- F. Dale Robertson, Chief of the Forest Service, promised to recommend 200 rivers to Congress for Wild and Scenic designation by 1993.
- William Penn Mott, Jr., Director of the National Park Service, committed his agency to identifying all potential Wild and Scenic rivers in National Park units and said NPS would redouble its efforts at cooperation with other federal and state agencies on rivers.
- Roland Robinson, Deputy Director of the Bureau of Land Management, agreed that BLM would continue to evaluate potentially eligible rivers for designation.

The commitments are expected to lead to dramatic growth in the Wild and Scenic Rivers System over the next decade.



NPS Director William Penn Mott, Jr, Deputy Director of the Bureau of Land Management Roland Robinson, Chief of the U.S. Forest Service F. Dale Robertson, Former Interior Secretary Stewart Udall, and American Rivers President W. Kent Olson during awards ceremony at 20th Anniversary celebration. Credit: American Rivers, Inc.

ment of a multiple-use trail on a 104-mile abandoned rail line which extends through the Black Hills of South Dakota.

## TENNESSEE

### Tennessee Rivers Workshop

The NPS conducted a one-day workshop on statewide rivers assessments for the state agency staff and river interests; the state is now considering options for funding and staffing a rivers assessment.

## TEXAS

### Salado Creek

The NPS assisted in the development of conservation strategies for Salado Creek, a tributary of the San Antonio River which flows through one of the fastest-growing

metropolitan regions in the country. The NPS provided advice and guidance in the formation of the Salado Creek Foundation, hosted a public workshop to identify river issues and actions, and facilitated a session for the Foundation board of directors to develop a work plan for their future activities.

## UTAH

### Park City Rail-to-Trail Plan

The NPS provided information and guidance to Park City (in the Wasatch range east of Salt Lake City) to assist that community's efforts to secure an abandoned railroad right-of-way for reuse as a trail connecting Park City, Coalville, Echo, and Phoston, Utah.

# 1989 Project Highlights

## Conservation Success:

### President Visits Spokane Centennial Trail

In response to increasing economic growth and development, the citizens along the Spokane River Valley organized a committee to develop a regional trail. The NPS assisted this group in developing a management plan and funding alternatives for the 39-mile river trail during 1987 and 1988, and has provided ongoing consultations since. Eighteen miles of the trail have been secured thus far by the Washington State Parks and Recreation Commission.



President George Bush made the Spokane Centennial Trail part of his September 19, 1989 visit to Washington state. Accompanying the President into his Congressional district was Speaker of the House Tom Foley. The President planted a tree and unveiled a Centennial Trail plaque during his visit. Credit: Chris Kopczynski

### Skykomish River Scenic Resource Study

Several components of an assessment of the visual resources of this 67-mile state-designated scenic river corridor were completed or initiated by the NPS and the University of Washington. The process, to be completed in 1990, will help guide management planning for this and other state scenic rivers.

### Snohomish-Arlington Centennial Trail

The NPS is cooperating in a resource assessment and concept plan for a 17.5 rail-trail which connects Snohomish and Arlington, Washington. The NPS provided guidance in the public involvement process and assisted in the trail concept plan which includes trail policies, management and design. Already the state has committed \$1.1 million in grants for land acquisition and development, which must be matched by the county.

### Virgin and Santa Clara River Greenway Plan

The NPS assisted in the formation of an advisory committee to guide the efforts of Walkways West and several local governments to establish a 76-mile greenway trail.

## VERMONT

### Hoosic River Study

(See Massachusetts)

### Long Trail Protection Study

The NPS coordinated this Congressionally-requested study, including data collection, policy analysis and development of alternative land protection strategies for privately-owned sections of Vermont's premier trail. National Scenic Trail designation is being recommended for the 266-mile trail, which runs from Massachusetts to the Canadian border.

### Northern Forest Lands Study

(See Maine listing)

### White River Assistance

NPS assisted in the completion of a landowner attitude survey and report summarizing its results. The report is being used as a foundation for identifying and developing future river conservation strategies.

## VIRGINIA

### Leesburg/Loudoun County Greenway

NPS helped form an Advisory Committee which will guide the development of a greenway plan for an area experiencing severe development pressures. The plan will help conserve environmentally-sensitive areas and recommend a trail system that links neighborhoods, parks, schools, and other public facilities within the Town of Leesburg, as well as connecting with other towns in Loudoun County.

### Multi-Objective River Corridor Workshop (Washington, DC)

(See California listing)

### Rails-to-Trails Seminar (Richmond)

(See California listing)

## WASHINGTON

### Burke Gilman Trail Extension

The NPS assisted in an inventory and evaluation of the natural and cultural resources within and adjacent to the proposed Burke Gilman Trail extension. The evaluation was used in final design decisions for the trail. The Burke Gilman extension is one of several projects in the recently-passed Kings County Open Space Bond, which devoted over \$2.5 million to this one trail's acquisition and development.

## WEST VIRGINIA

### Elk River Workshops

The NPS conducted three workshops with river interests to identify key issues affecting the Elk River and to discuss local alternatives for conservation and development.

### Greenbrier River Strategy

The NPS assisted in the organization and development of the newly-formed Greenbrier River Planning Council. NPS helped the Council prepare a river resource assessment, develop a survey of landowners and recreational users, identify private options for conserving the river and coordinate events to increase public awareness of the values of Greenbrier. Over 199 miles in length, the Greenbrier is one of the longest remaining free-flowing rivers east of the Mississippi.

### New River Regional Assistance

The NPS conducted workshops in each of the three counties surrounding the New River Gorge National River to help river interests identify resources and issues. This information will be used in further efforts to prepare an action plan for each community and to develop a combined conservation/economic development strategy for the region as a whole.



# 1989 Project Highlights

## West Virginia Rivers Assessment

As an initial step in a statewide assessment of river resources, the NPS helped form a State Heritage Task Force which will guide the development of a planning strategy for the assessment.

## Wheeling

### Ohio River Waterfront Strategy

In February, 1989, the NPS met with community leaders in Wheeling to discuss possible alternatives for economic and community revitalization that would build on the heritage of the city and community assets such as the waterfront and historic district.

## WYOMING

### Bear River Greenway

NPS is working cooperatively with the recently formed Bear River, Inc. to revitalize Evanston, through the development of a greenway along the river. The project recently received a \$100,000 grant from Chevron Corporation.

## Conservation Success:



Local efforts to revive the historic riverfront town of Hinton, West Virginia (located at the confluence of the spectacular Greenbrier and New rivers) have been assisted by the NPS. Credit: National Park Service

### Historic Hinton Waterfront Revitalized

The NPS helped to develop a strategy for community revitalization for the City of Hinton, West Virginia, located at the southern boundary of the New River Gorge National River. The strategy focused on the special features that the City of Hinton and the community have to offer.

With a local task force, the NPS held workshops, produced a promotional poster, and developed an Action Agenda, from which several items have already been implemented, including:

- A Main Street Program has been created, with \$275,000 granted for 1990. (\$250,000 for streetscape improvements and \$25,000 for rehabilitation of the historic Cox Building).
- 24 projects for facade improvements are now underway, with \$83,000 in private investment from June, 1988 to November, 1989.
- The New River Park boundary was expanded to include Hinton riverbank and the historic Railroad station.

# 1989 Conservation Successes From Past Years

## MASSACHUSETTS

### Blackstone Canal National Heritage Corridor

In 1989, a comprehensive management plan was completed for the Blackstone Canal. Volunteers and the Blackstone River Watershed Association have implemented many water quality clean-up and monitoring efforts. The Blackstone Canal was designated a National Heritage Corridor in 1987 following an NPS technical assistance project.

## NEW YORK

### Boquet River

The Boquet River Association initiated an enhanced citizens water quality monitoring program at 15 sites throughout the watershed during 1989. The program builds on the Boquet River Study, a technical assistance project conducted by NPS in 1984.

## PENNSYLVANIA

### Bristol-Delaware River

A ceremony was held in May, 1989, to dedicate design and landscaping improvements to the main street of Bristol, Pennsylvania. Congressman Peter Kostmayer was the keynote speaker for the dedication ceremony. This action is a direct result of the Bristol-Delaware revitalization strategy completed by NPS in 1987.

## SOUTH CAROLINA

### Lower Saluda River Corridor

As a spin-off of the NPS-assisted South Carolina Rivers Assessment (1988), the South Carolina Water Resources Commission and the South Carolina Department of Parks, Recreation and Tourism are co-sponsoring a comprehensive corridor plan for the Lower Saluda River. The Lower Saluda is a relatively undeveloped, ten-mile, whitewater river which runs through the center of the Columbia metropolitan area. The Saluda River was recognized in the Assessment as one of the state's most valuable rivers.

## VERMONT

### Vermont Rivers Comprehensive Program

Building on the earlier NPS-assisted Vermont Rivers Study and state legislation passed in 1987, the Vermont Agency of Natural Resources has created a comprehensive rivers program which will assist in the preparation of river conservation plans for all 17 major watersheds in the State.

## Conservation Success:

### South Carolina Upgrades River Law

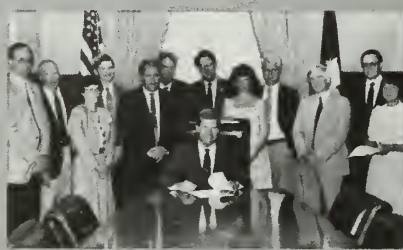
In 1989 the State of South Carolina passed a bill which substantially strengthens its State Scenic Rivers Program. The new legislation was a direct result of a statewide rivers assessment conducted by two NPS regional offices (Mid-Atlantic and Southeast) in cooperation with the state during 1986-1988.

Key provisions in the new law included:

- Provision for local management planning led by local advisory committees for state-designated rivers
- Incentives to private landowners for river conservation activities
- A stronger role for the South Carolina Water Resources Commission in administration of the Scenic Rivers program
- Authority for less-than-perpetual covenants for land protection along designated rivers
- Establishment of a Trust Fund, with a number of public and private sources of revenue, for land protection along rivers

The success of the legislation was in good part due to the cooperative environment fostered by the assessment process. A wide spectrum of business and conservation interests in the state, including key timber companies which had been involved in the assessment, were supporters.

To show his strong support for protecting rivers, South Carolina's Governor Carroll A. Campbell, Jr. wrote a personal check of \$1000 to make the first contribution to the new trust fund.



South Carolina Governor Carroll A. Campbell, Jr. signs 1989 Scenic Rivers bill with public and private interests looking on. Credit: South Carolina Water Resources Commission



# Rivers & Trails Conservation Assistance Funded Projects—Fiscal Year 1990

## Alaska Region

Alaska Recreation Rivers Management Plan  
Fairbanks 100-Mile Loop Trail  
Nenana River Corridor Use Study

## Mid-Atlantic Region

Allegheny Highlands Trail Study (PA)  
Ausable River Corridor Study (NY)  
Casebook of Multi-objective River Corridor  
Planning (with WASO)  
Chesapeake Bay Connection (MD/VA)  
Connecticut Rivers Assessment (with NARO)  
Delaware River Greenway Plan (PA)  
Elk River Corridor Study (WV)  
FERC Relicensing Consultation & Planning  
(with WASO)  
Great Egg Harbor River Conservation Plan  
(NJ)  
Greenbrier River Corridor Study (WV)  
Hoosic River Assistance (NY)  
Horse-Shoe Trail Study (PA)  
Lackawanna County Rails-to-Trails Study  
(PA)  
Lackawanna River Corridor Study (PA)  
Leesburg/Loudoun County Greenway Plan  
(VA)  
Louisiana Rivers Assessment (with SWRO)  
Mid-Atlantic Regional Trail Plan (with  
WASO)  
Multi-Agency Training Seminar in  
Floodplain Corridor Planning (with  
WASO)  
Vermont State Trail Plan (with NARO &  
WASO)  
West Virginia Rivers Assessment (WV)  
Westfield River Greenway Plan (MA)  
White River Study (VT)

## Midwest Region

Chicago Regional Trails Strategy (IL)  
Cuyahoga River/Ohio & Erie Canal Corridor  
Study (OH)  
FERC Relicensing Consultation & Planning  
(with WASO)  
Meramec River Outreach Project (MO)  
Missouri River Corridor Project (NE)  
Omaha/Council Bluffs Regional Trails Plan  
(NE/IA)  
Upper Mississippi Protection Strategy (MN)

## North Atlantic Region

Bay Circuit Greenway Plan (MA)  
Connecticut Rivers Assessment (with  
MARO)  
D & H Canal Heritage Corridor Plan (NY)  
Ecology of Greenways Resource Book (with  
WASO)  
Farmington Canal Rail-Trail Feasibility Study  
(CT)  
Fore River Trail Plan (ME)  
Hyde Park Trail Plan (NY)  
Long Path Relocation Plan (NY)  
New Hampshire Heritage Trail Development  
(NH)  
New Hampshire Rivers Program Planning  
(NH)  
North Atlantic Regional Trail Inventory (with  
WASO)  
Quinebaug Conservation Options Study  
(CT)  
Upper Connecticut River Watershed Plan  
(VT/NH)  
Vermont State Trail Plan (with MARO &  
WASO)

## Pacific Northwest Region

Idaho Centennial Trail (ID)  
Pacific Northwest Regional Trail Inventory  
(with WASO)  
Pacific Northwest Trails Directory (with  
WASO)  
Peninsula Trail (WA)  
Skykomish River Scenic Assessment Project  
(WA)  
Snohomish Trail (WA)  
Success Stories in River Conservation (with  
WASO)  
Washington State Trails Plan (with WASO)

## Rocky Mountain Region

Bear River Project (WY)  
Cache La Poudre River Trail Plan (CO)  
Crystal River Management Plan (CO)  
Historic Burlington Northern Trail Plan (SD)  
North St. Vrain Creek Management Plan  
(CO)  
Park City Rail-to-Trail Plan (UT)  
River & Trail Training (with WASO)  
San Miguel County Trail Plan (CO)  
Virgin and Santa Clara Rivers Greenway Plan  
(UT)

## Southeast Region

Chattanooga Greenways System Plan (TN)  
Florida Rivers Assessment (FL)  
Kentucky Rivers Assessment (KY)  
Little River Corridor Study (AL)

## Southwest Region

Arkansas Rivers Assessment (AR)  
Henryetta to Durant Rails-To-Trails Plan (OK)  
Louisiana Rivers Assessment (with MARO)

## Western Region

Arizona Rivers Assessment (AZ)  
Bay Area Ridge Trail Plan (CA)  
Economics of Greenways Resource Book  
(with WASO)  
Hawaii Streams Assessment (HI)  
Merced River Trail Plan (CA)  
Otay River Valley Corridor Plan (CA)  
Santa Rosa Creek Restoration Corridor Plan  
(CA)  
Santa Margarita River Watershed  
Conservation Plan (CA)  
Santa Ana River Corridor Plan (CA)  
Stream Restoration Case Studies (CA)

## Washington Office

Brochure for River & Trail Program  
Casebook of Multi-objective River Corridor  
Planning (with MARO)  
Confluence '89 River Conference  
Corridorwork Book  
Ecology of Greenways Resource Book (with  
NARO)  
Economics of Greenways Resource Book  
(with WRO)  
FERC Relicensing Consultation (with MWRO  
& MARO)  
Land Use Directory for Northeast States  
Metropolitan Recreation Corridor Plan  
Mid-Atlantic Regional Trail Plan (with  
MARO)  
Multi-Agency Training Seminar in  
Floodplain Corridor Planning (with  
MARO)  
National Trail Symposium  
North Atlantic Regional Trail Inventory (with  
NARO)  
Pacific Northwest Regional Trail Inventory  
(with PNRO)  
Pacific Northwest Trails Directory (with  
PNRO)  
Rail-to-Trail Seminar Series  
Rail-Trail Economic Study  
River & Trail Training (with RMRO)  
Success Stories in River Conservation (with  
PNRO)  
Vermont State Trail Plan (with NARO &  
MARO)  
Washington State Trail Plan (with PNRO)

**Each Region also receives  
allocations for the following:**

1. Program Administration
2. Workshops & consultations
3. National Trail Policy Work
4. National River Policy Work

# 1989 Publications Highlights

## Trails of the Mid-Atlantic Region



U.S. Department of the Interior  
National Park Service

### Trails of the Mid Atlantic

The NPS, working with the Virginia Commonwealth University, published a directory which covers 16,000 miles of trails in the states of Delaware, Maryland, New Jersey, Pennsylvania, Virginia, and West Virginia and the District of Columbia. The attractive, full-color directory describes the regional landscape and, through maps, grids, photographs, and narrative, describes the region's long-distance, cross country trails and the trails systems of more than 400 parks, forests, historic sites, and wildlife management areas.

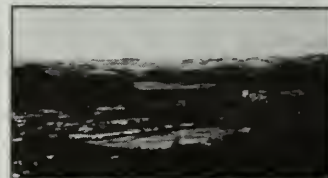


### Building Greenways in the Hudson River Valley: A Guide for Action

The National Park Service and Scenic Hudson, Inc., with assistance from the Hudson River Greenway Coalition, produced a guide for citizen action to help promote and establish greenways. The guide uses twelve case studies of greenways that exist or are underway in the Hudson Valley to illustrate the variety of resources, linkages, partnerships and arrangements that it may take to create a greenway. Many of the situations described in the case studies could be helpful to groups involved in greenways in other parts of the country. The handbook is a colorful, attractive publication which includes a checklist of resources to help citizens and local interest groups identify opportunities for greenways in their communities.

## The Dalles Riverfront Plan

Master Plan and  
Action Recommendations



Riverfront Plan Advisory Committee  
October, 1989

Wasco County • City of The Dalles • Port of The Dalles • National Park Service

### The Dalles Riverfront Plan

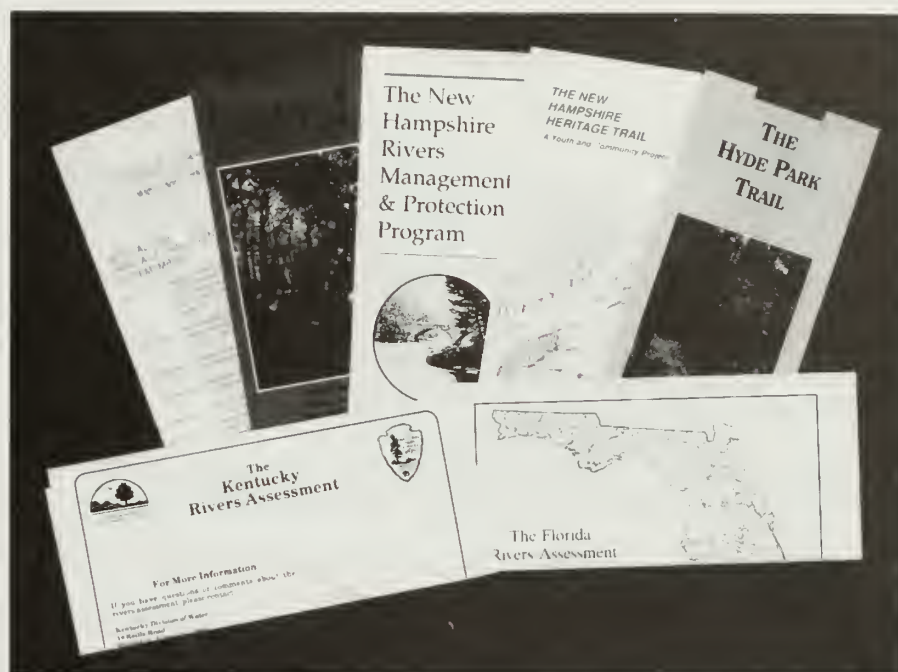
The Dalles Area Riverfront Improvement Project is a cooperative effort among the NPS, Wasco County, the City of The Dalles, and the Port of The Dalles, Oregon. The Plan covers a ten-mile segment of the Columbia River in the Columbia Gorge National Scenic Area. It represents the community's vision for a multi-purpose greenway and trail system linking existing and proposed parks, natural areas, cultural attractions, and commercial and industrial areas. The plan contains specific recommendations for implementation including priorities, timetables, and lead agencies and groups responsible for each task.





## The Mystic River Watershed Greenway Plan

The NPS and the Mystic River Watershed Advisory Committee worked together to create a plan to guide community efforts toward protection of the resources that comprise the Mystic River Watershed. The plan includes recommendations for actions to address water quality, land uses, fisheries, public access, historic preservation, and health and safety issues. Work on some of the actions recommended in this plan has already begun, including the development of a volunteer water quality monitoring program, the organization of a new Mystic River Watershed Association, and the construction of a fish ladder.



## Project Brochures

Often, as part of a cooperative project, NPS will help produce a brochure to enhance public awareness of a river or trail, or to build support and provide information for a particular conservation initiative. For example, the Hyde Park Trail brochure provides information about the cooperative efforts of a variety of organizations to create a greenway linking parks, historic sites, and environmentally protected areas in the Hudson Valley. It also provides specific information about the Hyde Park Trail including access points, points of interest and special resources.



## A Review of Model Land Use Regulations

As part of its assistance to the Mississippi Headwaters Board in Minnesota, the NPS prepared a report which describes options for river protection through zoning and land use regulations. The report presents case examples from ten rivers across the country and provides overviews of a variety of planning and zoning alternatives. The report is part of a cooperative project with the Board to update the management plan for the upper 460 miles of the Mississippi River.

# How To Get Assistance

Advice and technical assistance through the program is available to any Federal, State, or local government agency.

- Citizen organizations must find a local government partner in order to seek assistance.
- Projects may vary from one-time consultations to extended studies.
- Projects are encouraged in urban areas as well as rural and natural areas.
- All projects selected for assistance must involve significant resources, demonstrated public support and commitment, and cost-sharing with public and private interests.

Program funding is on a fiscal-year basis. Applications are accepted from January to July for projects beginning the following fall or winter.

Program information and advice on river or trail conservation issues and projects is available at any time.

For more information, contact the appropriate National Park Service regional office.



Credit: National Park Service

## **Alaska Region**

Planning Division  
2525 Gambell Street, Room 107  
Anchorage, Alaska 99503  
(907) 257-2650 (AK)

## **Mid-Atlantic Region**

143 South Third Street  
Philadelphia, Pennsylvania 19106  
(DE, MD, PA, VA, WV)

### **Rivers:**

Park and Resource Planning Division  
(215) 597-1581

### **Trails:**

Environmental and Recreation Resources  
Assistance Division  
(215) 597-2785

## **Midwest Region**

Planning and Environmental Quality  
Division  
1709 Jackson Street  
Omaha, Nebraska 68102  
(402) 221-3481 (IL, IN, IA, KS, MI, MN,  
MO, NE, OH, WI)

## **North Atlantic Region**

Planning and Design Division  
15 State Street  
Boston, Massachusetts 02109  
(617) 223-5123 (CT, MA, ME, NH, NJ, NY,  
RI, VT)

## **Pacific Northwest Region**

Recreation Programs Division  
83 South King Street, Suite 212  
Seattle, Washington 98104  
(206) 442-5366 (ID, OR, WA)

## **Rocky Mountain Region**

Recreation Grants and Assistance Division  
P.O. Box 25287  
Lakewood, Colorado 80225  
(303) 969-2850 (CO, MT, ND, SD, UT, WY)

## **Southeast Region**

Planning and Federal Programs Division  
75 Spring Street, S.W.  
Atlanta, Georgia 30303  
(404) 331-5838 (AL, FL, GA, KY, MS, NC,  
SC, TN)

## **Southwest Region**

Planning and Design Division  
P.O. Box 728  
Santa Fe, New Mexico 87504  
(505) 988-6881 (AR, LA, NM, OK, TX)

## **Western Region**

Planning, Grants, and Environmental  
Quality Division  
450 Golden Gate Avenue  
P.O. Box 36063  
San Francisco, California 94102  
(415) 556-6481 (AZ, CA, HI, NV)

## **Washington Office**

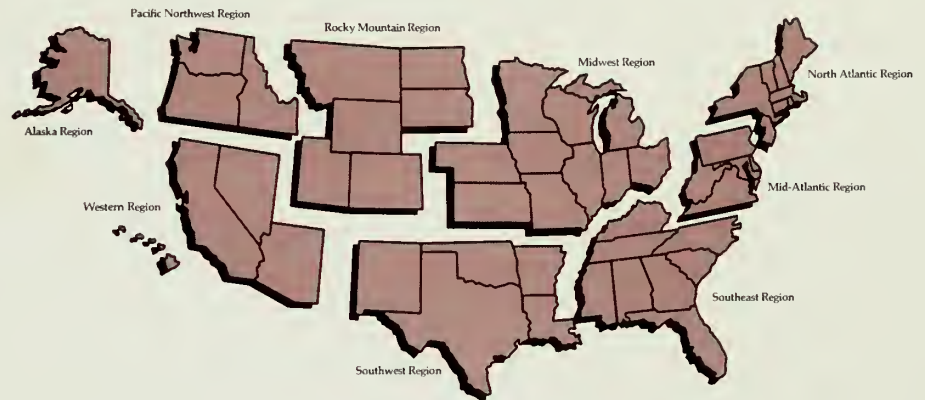
Recreation Resources Assistance Division  
P.O. Box 37127  
Washington, D.C. 20013  
(202) 343-3780





# Rivers and Trails Conservation Assistance Staff—1989

Professional staff who worked all or part of Fiscal Year 1989 on Rivers and Trails programs



## Alaska Region

Linda Nebel, Division Chief  
Jack Mosby, Program Manager  
Lynn Anderson  
Douglas Whittaker

## Mid-Atlantic Region

J. Glenn Eugster, Division Chief (Rivers)  
Robert F. Gift, Division Chief (Trails)  
David Lange, Branch Chief  
Patricia Weber, Branch Chief  
Mark Apel  
Julie Bell  
Donald Briggs  
Lisa Dewey  
Daniel Haas  
Scott Hall  
Michael Jennings  
Elizabeth Koreman  
Paul Labovitz  
Michael Linde  
Richard Lush  
Katherine Newland  
Sherry Peck  
Robert Potter  
Alan Ragins  
Evelyn Swimmer  
Kent Wimmer  
David Wood

## Midwest Region

Alan M. Hutchings, Division Chief  
Dean Alexander, Program Manager  
Wendy Brand  
Rick Clark  
Thomas Gilbert  
June McMillen  
Judith Skipski  
John Sowl

## North Atlantic Region

Terry W. Savage, Division Chief  
Steven Golden, Branch Chief  
Karl Beard  
Eric Hollman  
Phil Huffman  
Beverly Kane  
Matthew Lynaugh  
Burnham Martin  
Linda Neal  
Jennifer Porter  
Daniel Smith  
Charles Tracy  
Jamie Williams

## Pacific Northwest Region

Robert J. Karotko, Division Chief  
Bryan Bowden  
Dennis Canty  
Christine Carlson  
Kathy Maurich  
Kent (Charlie) Sundberg

## Rocky Mountain Region

Robert J. Arkins, Division Chief  
Duane A. Holmes, Program Manager  
Hugh Duffy  
P. Kay Salazar

## Southeast Region

Sharon Keene, Division Chief  
Christopher Abbett  
Wallace Brittain  
Wink Hastings

## Southwest Region

Douglas D. Faris, Division Chief (Rivers)  
Donald Goldman, Branch Chief  
Steven Beesley  
Richard Niemeyer

## Washington Office

William T. Spitzer, Division Chief  
Paul Solomon, Deputy Division Chief  
Christopher N. Brown, Branch Chief  
Bern Collins, Branch Chief  
D. Thomas Ross, Branch Chief  
Susan Bloomfield  
Steven Elkinton  
Elizabeth S. Dillon  
John T. Kelly  
Linda Mazzu  
Einar Olsen  
Alicia Riddell  
Angela Scarborough  
Karl (Chris) Soller  
Laura Szwak

## Western Region

Raymond Murray, Jr., Division Chief  
Nancy Stone, Program Manager  
Martha Crusius  
Gary Guthrie  
Peg Henderson  
Henry Rowlan  
Linda Stonier  
Olman Valverde  
Kathleen Williams

## Acknowledgements:

Text Preparation: Deborah Giles,  
Chris Brown, Alicia Riddell  
Layout/Design: Charles Beyl



January 1990

Cover photos:  
Blaine County Recreation District  
National Audubon Society