


129.6. N217/450

OUTDOOR PROGRAM

Clemson University



3 1604 019 753 450

1956



NATIONAL CAPITAL PARKS



OUTDOORS, 1956

Here is the 16th annual edition of the Outdoor Program, a schedule of activities provided for the public from April through November in National Capital Parks, a unit of the National Park Service, United States Department of the Interior.

UNITED STATES DEPARTMENT OF THE INTERIOR
NATIONAL PARK SERVICE

OUTDOOR PROGRAM



A Public Service of
NATIONAL CAPITAL PARKS
Washington, D. C.



CONTENTS

	Page
Interpretive Activities	1
Walks	1
Hikes	1
Level Walkers Hikes	2
Caravans	2
Historic Tours	2
Bird Observations	2
Bird Walks	2
Early Birders	3
Evening Adventures	3
Barge Trips – C & O Canal	3
Rock Creek Nature Center	4
Exploring The Sky	4
Kenilworth Aquatic Gardens	4
Theodore Roosevelt Island	4
 Other Interpretive Activities	 5
 Schedule of Events	 See Color Insert
 Sylvan Theatre	 8
 Carter Barron Amphitheater	 13
 Special Events	 14
Concerts – Watergate	14



INTERPRETIVE ACTIVITIES

The events listed in this section are organized and conducted by Park Naturalists or Park Historians (except bird observations). There is no charge for their services and the only cost, if any, is for transportation where shown.

Meeting places may usually be reached by regular street cars and buses operated by the Capital Transit Company. Call their Information Department (DUpont 7-7625, Ext. 572) for details.

WALKS: These leisurely walks are led by Park Naturalists who introduce the plants, animals, and geology of your parks. On some, guest experts share their knowledge and experience. Each presents a specific outdoor subject but the unexpected opportunity to observe wildlife in its natural habitat can and does enliven the trips. In National Capital Parks there is a variety of places where these trips are conducted, and some are repeated at different seasons, thus giving a more comprehensive coverage of the natural features.

All activities are conducted regardless of weather and, unless otherwise noted, they start and end at the same place.

HIKES: Longer and more strenuous walking trips are scheduled for the cooler seasons. A Park Naturalist leads these trips and points out natural features along the way. In some cases the trails are steep and rough, and hikers should wear shoes and clothing that are sturdy and comfortable. Those going by chartered bus should make reservations (see ticket information under CARAVANS below).

LEVEL WALKER HIKES: These hikes are conducted on the Chesapeake and Ohio Canal towpath in April, May, and June and are repeated in October and November. To become a certified member of the "Society of Honorary Level Walkers" each hiker must participate in all eight hikes. Ask the Park Naturalist how to earn your membership card.

CARAVANS are half-day or all-day trips by chartered bus to nearby areas administered by the National Park Service. A Park Historian or Park Naturalist is in charge of each trip and presents interpretive talks at the destination. On some of the caravans conducted by the Park Naturalist, there will also be opportunity to hike along woodland trails.

Please make reservations, to assure that seats will be available. Call Capital Transit, Chartered Coach Department, Columbia 5-9215, Ext. 653, 8:30 a.m. to 5 p.m., Monday through Friday. Buses leave from 1013 15th St. NW. Tickets are sold there before departure and fare includes tax.

Each person must bring his own picnic lunch and drink. On all-day trips, evening snacks may be eaten on the buses. Arrangements cannot be made to eat at restaurants and usually there is no place to buy food en route. There are short comfort stops on the longer trips. Caravans leave on schedule regardless of weather.

HISTORICAL TOURS are conducted by Park Historians. They visit national memorials in and about the Nation's Capital and provide an opportunity to become acquainted with the history and significance of Washington's public monuments. In addition, this series of walks makes available the history of several of the larger memorials and public buildings in greater detail than is usually presented in the areas themselves. The walking distance is short and the pace leisurely.

BIRD OBSERVATIONS are led by members of the Audubon Society of the District of Columbia, Inc., experienced bird watchers, who cooperate with National Capital Parks in conducting birding activities during the spring and fall seasons.

BIRD WALKS are led by Park Naturalists, who identify the more common birds and explain the fundamentals of birdwatching.

Suitable footwear is important and binoculars are helpful. Persons bringing children's groups should call the Park Naturalist (REpublic 7-1820, Ext. 2557) at least a week in advance and leadership will be provided if available.

Interpretive Activities

EARLY BIRDERS are short bird walks before office hours during the Spring season. They are led by a Park Naturalist in areas near downtown Washington.

EVENING ADVENTURES. On Tuesday and Thursday evenings colorful programs planned for all ages, especially family groups, are presented by Park Naturalists. Facilities do not permit cooking in these areas but if you wish, bring a picnic supper to eat before the program.

The programs include illustrated talks, movies, demonstrations, walks, singing, stories, games and often live animals. The "Naturevan," a unique and outstanding audio-visual mobile unit, is used in this and many other activities. These events are cancelled in case of rain.

BARGE TRIPS. Mule-drawn barge trips on the Chesapeake and Ohio Canal are conducted in cooperation with Government Services, Inc. A Park Historian or Naturalist accompanies each scheduled trip to interpret the history of the Canal and natural features en route. Trips are made regardless of weather.

Tickets are on sale at the office of Government Services, Inc., 1135 21st St. NW from 8 a.m. to 4:30 p.m., Monday through Friday. For reservations call NAtional 8-7363. Tickets reserved by telephone will be held at the barge until 15 minutes before departure. (On weekends and holidays call NAtional 8-0037 for information.) Soft drinks, ice cream, candy, cookies, and postcards are sold on the barge. Organized groups may charter the barge on Monday, Tuesday, Thursday, and Friday evenings through Government Services, Inc.

Schedule

May 5 to October 28 (Saturdays, Sundays, Holidays):

Adults, \$1 round trip; children under 12, 60¢ round trip.

2 p.m., upstream trip—leave Lock 3, 1 block south of 30th & M Sts. NW.

4 p.m. downstream trip—leave Lock 5, Brookmont, Md., down steps from Ridge Dr. & 61st St. (Stop 24, Cabin John car line).

One-way passengers may leave the barge at the upper terminus, Lock 5, or embark at that point for the downstream trip. All passengers are required to pay round-trip fare regardless of distance traveled.

May 30 to September 5 (Wednesday evenings):

Adults, 75¢; children under 12, 50¢.

6:30 p.m., leave Lock 3, 1 block south of 30th & M Sts. NW.
(Barge returns to Lock 3 at 9 p.m.)



Forest life is discovered on Theodore Roosevelt Island

DAY CAMPS. Nature activities in D. C. Recreation Department Day Camps during the summer are conducted by Park Naturalists and camp leaders. Children wishing to attend these free camps may telephone the D. C. Recreation Department (ADams 4-2050) for information and applications.

At GREAT FALLS, MD., an Historical Museum and Natural History Wayside Exhibit are maintained. The Historical Museum is open daily from June through Labor Day and on Saturdays and Sundays, weather permitting, for the remainder of the year. The Wayside Exhibit is open daily except Tuesdays and Wednesdays from July through Labor Day. By advance arrangement with the Park Naturalist, parties of 15 or more can schedule short walks to the falls or along the canal towpath for first-hand interpretation of natural and historical features of the area. Call the Park Naturalist's Office, REpublic 7-1820, Ext. 2557.

In old FORT WASHINGTON, MD., historical exhibits may be seen at the sally port entrance to the fort between 10 a.m. and 6 p.m. on Saturdays, Sundays, and Holidays from May through Labor Day.

HISTORICAL TALKS are given every hour and half-hour at Custis-Lee Mansion and Lincoln Museum on Saturdays and Sundays from June through Labor Day. Groups and organizations desiring special guide and lecture service at Lincoln Museum (Ford's Theatre), House Where Lincoln Died (Old Petersen House), Custis-Lee Mansion, Washington Monument, Jefferson Memorial, and Lincoln Memorial should telephone REpublic 7-1820, Ext. 2565.

SCHEDULE OF EVENTS - APRIL

April 7 CHERRY BLOSSOM FESTIVAL. See newspapers for program.
Sat.

BIRD OBSERVATION 8 a.m. Meet at Arlington National Cemetery main gate. (Call Jackson 8-4000 for W.V. & M. bus schedule.)

April 8 CHERRY BLOSSOM FESTIVAL. See newspapers for program.
Sun.

HIKE 9 a.m. to 5 p.m. Early spring flowers along the C & O Canal, Swains Lock to Seneca Aqueduct. Distance: 6.2 miles. Meet at Capital Transit Office, 1013 15th St. NW. (Call Columbia 5-9215, Ext. 653 for reservation.) Bring lunch and drink. Fare \$1.65.

SPRING GARDENS 2 p.m. Kenilworth Aquatic Gardens. The flowers and birds of Kenilworth. See page 4.

April 10 EARLY BIRDERS 7 a.m. An hour with the birds of the Ellipse.
Tues. Meet at Constitution Ave. and 17th St. NW.

April 15 BIRD OBSERVATION 8 a.m. Kenilworth Aquatic Gardens. A cool spring morning with Kenilworth birds. See page 4.

TREES IN SPRING 10:30 a.m. A walk in Dumbarton Oaks and Montrose Parks. Meet at Avon Pl. & R Sts. NW.

EARLY SPRING FLOWERS 1:30 and 3 p.m. Tours through Dumbarton Oaks Park. See directions above.

Springtime



Outdoor Program 1956

April 21 BIRD OBSERVATION 8 a.m. Fort Dupont Park. Meet at Ridge Rd.
Sat. & Texas Ave. SE.

BIRD OBSERVATION 8 a.m. Fort Hunt, Va. Meet at junction of
Fort Hunt Rd. & Mt. Vernon Memorial Highway, about 6½ miles
south of Alexandria. No public transportation available.

April 22 BIRD OBSERVATION 8 a.m. Spring birds along the C & O Canal.
Sun. Meet at MacArthur Blvd. & Walthonding Rd. NW. (Stop 30,
Cabin John car line).

DUMBARTON OAKS PARK 2 p.m. Spring birds. Meet at Avon Pl.
& R St. NW.

FLOWERS OF SPRING 2 and 4 p.m. Leisurely walks in Meridian
Hill Park, 16th & Euclid Sts. NW.

VOICES IN THE NIGHT 7:30 p.m. Evening sounds on a stroll
along the C & O Canal. Meet at Ridge Dr. & 61st St., Brook-
mont, Md. (Stop 24, Cabin John car line). Bring flashlight.

April 28 BIRD OBSERVATION 8 a.m. Meet at Arlington National Cemetery
Sat. main gate. (Call Jackson 8-4000 for W.V. & M. bus schedule.)

BIRD OBSERVATION 8 a.m. C & O Canal. Meet at MacArthur
Blvd. & Cornell Ave., Glen Echo, Md. (Stop 39, Cabin John
car line).

April 29 BIRD OBSERVATION 8 a.m. Meet at Virginia end of Chain Bridge
Sun. (about one mile from Stop 20, Cabin John car line).

BIRD WALKS 8:30 and 10:30 a.m. C & O Canal. Meet at
MacArthur Blvd. & Cornell Ave., Glen Echo, Md. (Stop 39, Cabin
John car line).

LEVEL WALKERS HIKE 9 a.m. to 5 p.m. 8.5 miles along C & O
Canal from Seneca Aqueduct to Great Falls Tavern. Meet at
Capital Transit Office, 1013 15th St. NW. (Call Columbia 5-9215,
Ext. 653 for reservation.) Bring lunch and drink. Fare \$1.70.

SPRING WILDFLOWERS 2 p.m. A walk in Rock Creek Park.
Meet at 16th & Geranium Sts. NW.

SCHEDULE OF EVENTS - MAY

May 3 EARLY BIRDERS 7 a.m. An hour with the birds of Potomac Park.
Thur. Meet at Constitution Ave. & 21st St. NW.

May 5 BIRD OBSERVATION 8 a.m. Rock Creek Nature Center. See
Sat. page 4.

BIRD OBSERVATION 8 a.m. Meet at gateway of Leiter Uplands, Va., 2 miles north of Chain Bridge, on State Route 123. No public transportation available.

BARGE TRIPS 2 and 4 p.m. See page 3.

May 6 BIRD OBSERVATION 8 a.m. Dumbarton Oaks Park. Meet at
Sun. Avon Pl. & R St. NW.

BIRD WALKS 8:30 and 10:30 a.m. along C & O Canal. Meet at Ridge Dr. & 61st St., Brookmont, Md. (Stop 24, Cabin John car line).

LEVEL WALKERS HIKE 9 a.m. to 5 p.m. 6 miles along C & O Canal near Shepherdstown. Meet at Capital Transit Office, 1013 15th St. NW. (Call Columbia 5-9215, Ext. 653 for reservation.) Bring lunch and drink. Fare \$3.75.

BARGE TRIPS 2 and 4 p.m. See page 3.

SPRING WILDFLOWERS 2:30 p.m. An afternoon stroll along the C & O Canal. Meet at Ridge Dr. & 61st St., Brookmont, Md. (Stop 24, Cabin John car line).

May 12 ROWING REGATTA, Hains Point. See newspapers for details.
Sat.

BIRD OBSERVATION 8 a.m. Kenilworth Aquatic Gardens. See page 4.

BIRD OBSERVATION 8 a.m. Soldiers Home, Randolph St. & Rock Creek Church Rd. NW.

LEVEL WALKERS HIKE 9 a.m. to 5 p.m. along C & O Canal, 8 miles, Edwards Ferry to Seneca Aqueduct. Meet at Capital Transit Office, 1013 15th St. NW. (Call Columbia 5-9215, Ext. 653 for reservation.) Bring lunch and drink. Fare \$1.95.

Outdoor Program 1956

May 12 BARGE TRIPS 2 and 4 p.m. See page 3.
Sat.

May 13 BIRD OBSERVATION 8 a.m. in Rock Creek Park. Meet at
Sun. 16th St. & Alaska Ave. NW.

BIRD WALKS 8 and 10 a.m. A morning with the birds of Rock
Creek Park. Meet at 16th & Underwood Sts. NW.

BARGE TRIPS 2 and 4 p.m. See page 3.

HISTORICAL TOUR OF PENNSYLVANIA AVENUE 2:30 p.m.
History of the Avenue from Treasury Building to Peace Monument
and of past and present buildings along the Avenue; memorials to
Gen. Sherman, A. R. Shepherd, Gen. Casimir Pulaski, and
Gen. W. S. Hancock. Meet at north entrance of Treasury Building
on Pennsylvania Ave.

FLOWER WALK 3 p.m. in Dumbarton Oaks Park. Meet at Avon Pl.
& R St. NW.

EXPLORING THE SKY 9 p.m. Fort Reno Park. View Venus at its
greatest brilliance through the telescope. See page 4.

May 18 EARLY BIRDERS 7 a.m. An hour with the birds of the Ellipse.
Fri. Meet at Constitution Ave. & 17th St. NW.

May 19 BIRD OBSERVATION 8 a.m. C & O Canal. Meet at MacArthur
Sat. Blvd. & Walhonding Rd. (Stop 30, Cabin John car line).

BARGE TRIPS 2 and 4 p.m. See page 3.

May 20 BIRD OBSERVATION 9 a.m. on Theodore Roosevelt Island.
Sun. Ferry operates from 9 a.m. to 4 p.m. today. See page 4.

LEVEL WALKERS HIKE 10 a.m. to 5 p.m. along C & O Canal
6.6 miles from Cabin John Run to Great Falls. Meet at MacArthur
Blvd. & Cornell Ave., Glen Echo, Md. (Stop 39, Cabin John car
line) and return to city by special bus. Bring lunch and drink.
Fare \$1.10.

BIRD WALK 10 a.m. A quiet morning with the birds on Theodore
Roosevelt Island. Ferry operates from 9 a.m. to 4 p.m. today.
See page 4.

Schedule of Events - May

May 20 WILDFLOWERS 2 p.m. Enjoy the wild iris and other water plants
Sun. on Theodore Roosevelt Island. See page 4.

BARGE TRIPS 2 and 4 p.m. See page 3.

HISTORICAL TOUR OF CUSTIS-LEE MANSION 2:30 p.m., a
tour through the mansion and grounds. Meet at main entrance to
Arlington National Cemetery. (Call King 9-7800 for A.B. & W.
bus schedule.)

May 26 LEVEL WALKERS HIKE 9 a.m. to 5 p.m. along C & O Canal,
Sat. 6.5 miles from Woods Lock to Noland's Ferry. Meet at Capital
Transit Office, 1013 15th St. NW. (Call Columbia 5-9215,
Ext. 653 for reservation.) Bring lunch and drink. Fare \$2.20.

BARGE TRIPS 2 and 4 p.m. See page 3.

May 27 PRINCE WILLIAM FOREST PARK Caravan 10 a.m. to 4 p.m.
Sun. A visit to the new park Nature Center, a picnic in the pines, and
an optional hike over woodland trails to an abandoned mine,
highlight a day at Prince William Forest Park, Va. Meet at Capital
Transit Office, 1013 15th St. NW. (Call Columbia 5-9215, Ext. 653
for reservation.) Bring lunch and drink. Fare \$1.65.

BARGE TRIPS 2 and 4 p.m. See page 3.

HISTORICAL TOUR, MARINE CORPS WAR MEMORIAL (Iwo Jima)
2:30 p.m. History of conception and erection of the Marine Corps
War Memorial. Story of the raising of the Stars and Stripes on
Mount Suribachi; the memorial site and its relationship to the
National Capital. Meet at Marine Corps War Memorial, Arlington
Ridge Rd. & Arlington Blvd., Arlington, Va. (Call W.V. & M.
Coach Co., Jackson 8-4000, for bus schedule.)

MOSESSES 3:30 p.m. A guest expert identifies mosses along the
C & O Canal. Meet at MacArthur Blvd. & Cornell Ave., Glen Echo,
Md. (Stop 39, Cabin John car line).

EXPLORING THE SKY 9 p.m. Fort Reno Park. Jupiter and Venus
prominent. See page 4.

May 30 BARGE TRIPS 2 and 4 p.m. See page 3.
Wed.

SCHEDULE OF EVENTS - JUNE

June 1 SYLVAN THEATRE 8:45 p.m. See page 9.
Fri.

June 2 GEOLOGY HIKE 9 a.m. to 5 p.m. The rocks, minerals and out-
Sat. standing geologic formations of Bear Island are described by a
guest geologist on a hike from Cropley to Great Falls, Md. Meet at
Capital Transit Office, 1013 15th St. NW. (Call COLUMBIA 5-9215,
Ext. 653 for reservation.) Bring lunch and drink. Fare \$1.50.

TREE WALK 10:30 a.m. Lafayette Park, a guide to the trees
of many lands. Meet at 16th & H Sts. NW.

BARGE TRIPS 2 and 4 p.m. See page 3.

June 3 BIRD WALKS 8 and 10 a.m. in Montrose and Dumbarton Oaks
Sun. Parks. Meet at entrance to Montrose Park, Avon Pl. & R St. NW.

LEVEL WALKERS HIKE 9 a.m. to 5 p.m. along C & O Canal
7 miles from Nolands Ferry to Lander. Meet at Capital Transit
Office, 1013 15th St. NW. (Call COLUMBIA 5-9215, Ext. 653
for reservation.) Bring lunch and drink. Fare \$2.20.

TREES: PAGEANT OF GREEN 2 p.m. walk in shady Rock
Creek Park. Meet at 16th & Alaska Ave. NW.

BARGE TRIPS 2 and 4 p.m. See page 3.

HISTORICAL TOUR of the MALL 2:30 p.m., from Grant Memorial
to Washington Monument. History of the Mall from 1791 to the
present, with stories of the park when used for a railroad, canal,
and cow pasture; National Gallery of Art, National Archives,
and Smithsonian Institution. Meet at Grant Memorial, 1st St. &
Pennsylvania Ave. NW.

June 6 BARGE TRIP 6:30 p.m. See page 3.
Wed.

June 8 SYLVAN THEATRE 8:45 p.m. See page 9.
Fri.

Schedule of Events — June

June 9 LEVEL WALKERS HIKE 10 a.m. to 5 p.m. along C & O Canal
Sat. 7.1 miles from Cabin John Run to Rock Creek. Meet at MacArthur
Blvd. & Cornell Ave., Glen Echo, Md. (Stop 39, Cabin John car
line). Bring lunch and drink.

BARGE TRIPS 2 and 4 p.m. See page 3.

WILDLIFE ON LINNAEAN HILL 3 p.m. A tour of the
grounds at Rock Creek Nature Center observing trees,
birds, flowers, and other wildlife in this hilltop sanctuary.
See page 4

CAMPFIRE NIGHT: ANIMALS 7:30 p.m. An evening animal
stalk along the C & O Canal, songs and music around the camp-
fire, and the Naturevan, with pictures in color. Meet at Ridge Dr.
& 61st St., Brookmont, Md. (Stop 24, Cabin John car line).
Bring flashlight.

June 10 BIRD WALKS 8 and 10 a.m. Birdwatching along the forest trails
Sun. of Rock Creek Park. Meet at 16th & Underwood Sts. NW.

CATOCTIN MOUNTAINS IN SPRING 8:30 a.m. to 6 p.m.
Caravan to Catoctin Mountain Park, near Thurmont, Md. Hiking,
picnicking, and exploring are the choices for the day in this
mountain wonderland. Meet at Capital Transit Office,
1013 15th St. NW. (Call Columbia 5-9215, Ext. 653 for reser-
vation.) Bring lunch and drink. Fare \$3.30. See page 2.

BARGE TRIPS 2 and 4 p.m. See page 3.

HISTORICAL TOUR OF LINCOLN MEMORIAL & ENVIRONS
2:30 p.m. History of Lincoln Memorial, Ericsson Memorial,
Arlington Memorial Bridge, the Equestrian Statues, Roosevelt
Island, and buildings along Constitution Avenue. Meet
under the inscription of Gettysburg Address in the Lincoln
Memorial.

VOICES IN THE NIGHT 7:30 p.m. An evening tour through
Kenilworth Aquatic Gardens, listening for the sounds of the night.
Bring flashlight. See page 4.

June 13 BARGE TRIP 6:30 p.m. See page 3.
Wed.

June 14 EARLY BIRDERS 7 a.m. An hour with the birds of Potomac Park.
Thurs. Meet at Constitution Ave. & 21st St. NW.

Outdoor Program 1956

June 14 WATERGATE CONCERT 8:30 p.m. United States Navy Band.
Thurs. See page 14.

June 15 SYLVAN THEATRE 8:45 p.m. See page 9.
Fri.

WATERGATE CONCERT 8:30 p.m. United States Air Force
Symphony Orchestra. See page 14.

June 16 KENILWORTH AQUATIC GARDENS 8:30 and 10 a.m. Conducted
Sat. tours through the gardens. See page 4.

BARGE TRIPS 2 and 4 p.m. See page 3.

NATURE CRAFTS DEMONSTRATIONS 2 and 4 p.m. Things to do
and make with native materials. Rock Creek Nature Center. See
page 4.

AFTERNOON OF DISCOVERY 3:30 p.m. Trailside nature inter-
pretations on a stroll in Rock Creek Park. Meet at Rock Creek
Trail Center, just south of Military Rd. & Beach Dr. NW.

EXPLORING THE SKY 9 p.m. Fort Reno Park. Jupiter and
Saturn in full display will be seen through high-power telescopes.
See page 4.

June 17 BIRD WALK 7 a.m. Early-morning flight and song over ponds
Sun. and marshes. Kenilworth Aquatic Gardens. See page 4.

FLOWER WALKS 8:30 and 10 a.m. Native and exotic flowers
of Kenilworth Aquatic Gardens. See page 4.

LEVEL WALKERS HIKE 9 a.m. to 5 p.m. along C & O Canal
6.5 miles from Woods Lock to Edwards Ferry. Meet at Capital
Transit Office, 1013 15th St. NW. (Call Columbia 5-9215,
Ext. 653 for reservation.) Bring lunch and drink. Fare \$1.95.

BARGE TRIPS 2 and 4 p.m. See page 3.

HISTORICAL TOUR OF LAFAYETTE PARK 2:30 p.m. Story of
the Park, its statues, and nearby structures—including The White
House, Blair House, Decatur House, and Dolly Madison House.
Meet at Jackson Statue in center of Lafayette Park, 16th &
H Sts. NW.

MUSHROOM WALK 3 p.m. A guest expert identifies wild mush-
rooms in the forest shade of Rock Creek Park. Meet at Military Rd.
& Oregon Ave. NW.

Schedule of Events — June

June 17 WATERGATE CONCERT 8:30 p.m. United States Marine Band.
Sun. See page 14.

June 19 WATERGATE CONCERT 8:30 p.m. United States Army Band.
Tues. See page 14.

June 20 BARGE TRIP 6:30 p.m. See page 3.
Wed.

June 21 WATERGATE CONCERT 8:30 p.m. United States Navy Band.
Thurs. See page 14.

June 22 SYLVAN THEATRE 8:45 p.m. See page 9.
Fri.

WATERGATE CONCERT 8:30 p.m. United States Air Force
Symphony Orchestra. See page 14.

June 23 BIRD WALK 7 a.m. Early morning marsh birds at Kenilworth
Sat. Aquatic Gardens. See page 4.

FLOWERS OF KENILWORTH 8:30 and 10 a.m. A Naturalist
conducts morning tours through Kenilworth Aquatic Gardens.
See page 4.

WILD NATURE 10 a.m. and 2 p.m. Theodore Roosevelt Island.
Morning and afternoon tours through forest, marsh and meadow
in this unusual wildlife sanctuary. Ferry operates from 9 a.m. to
4 p.m. today. See page 4.

BARGE TRIPS 2 and 4 p.m. See page 3.

SUMMER ON THE OLD CANAL 3 p.m. Strolling with a Naturalist
along the C & O Canal towpath. Meet at Ridge Dr. & 61st St.,
Brookmont, Md. (Stop 24, Cabin John car line).

June 24 THE BIRDS OF LINNAEAN HILL 8 and 10 a.m. Pleasant morning
Sun. bird walks in a quiet sanctuary. Rock Creek Nature Center.
See page 4.

FLOWER WALKS 8:30 and 10 a.m. A Naturalist describes the
colorful vegetation on walks through Kenilworth Aquatic Gardens.
See page 4.

NATURE CRAFTS DEMONSTRATIONS 2 p.m. What to make (and
how to make it) in the great outdoors. Rock Creek Nature Center.
See page 4.

Outdoor Program 1956

June 24 ON A SUMMER AFTERNOON 2 p.m. Theodore Roosevelt Island.
Sun. A trailside tour through this island preserve in the Potomac River.
See page 4.

BARGE TRIPS 2 and 4 p.m. See page 3.

HISTORICAL TOUR OF MERIDIAN HILL PARK 2:30 p.m. The story of Meridian Hill, its historical and geographical features, first site of historic Joaquin Miller Cabin, park development and landscape treatment; memorials to James Buchanan, Dante, Jeanne d'Arc, La Serenity. Meet at north entrance, 16th & Euclid Sts. NW.

WATERGATE CONCERT 8:30 p.m. United States Marine Band.
See page 14.

June 26 WATERGATE CONCERT 8:30 p.m. United States Army Band.
Tues. See page 14.

June 27 BARGE TRIP 6:30 p.m. See page 3.
Wed.

June 28 WATERGATE CONCERT 8:30 p.m. United States Navy Band.
Thurs. See page 14.

June 29 SYLVAN THEATRE 8:45 p.m. See page 10.
Fri.

WATERGATE CONCERT 8:30 p.m. United States Air Force Symphony Orchestra. See page 14.

June 30 POND TOURS 8:30 and 10 a.m. along lotus and water-lily ponds
Sat. at Kenilworth Aquatic Gardens. See page 4.

GREAT FALLS WONDERLAND 1 to 6 p.m. A caravan to Great Falls, Md. View this rushing torrent of the Potomac from atop high rock bluffs. Trip includes visits to historical museum and natural history exhibits. Meet at Capital Transit Office, 1013 15th St. NW. (Call Columbia 5-9215, Ext. 653 for reservation.) Fare \$1.50.

BARGE TRIPS 2 and 4 p.m. See page 3.

ISLAND WILDERNESS 2 p.m. An afternoon nature walk around Theodore Roosevelt Island. See page 4.

SCHEDULE OF EVENTS - JULY

- July 1 Sun. BIRD WALK 7 a.m. An adventure in birding in an outstanding wildlife sanctuary. Kenilworth Aquatic Gardens. See page 4.
- SUMMER FLOWERS OF KENILWORTH 8:30 and 10 a.m. Tours among the lily ponds at Kenilworth Aquatic Gardens. See page 4.
- BIRDS OF ROCK CREEK PARK 8 a.m. Casual morning bird walk leaves from Rock Creek Trail Center, Military Rd. & Beach Dr. NW.
- BARGE TRIPS 2 and 4 p.m. See page 3.
- NATURE WALK 2 p.m. An afternoon of exploration on Theodore Roosevelt Island. See page 4.
- HISTORICAL TOUR OF THE JEFFERSON MEMORIAL 2:30 p.m. History of the Memorial and Statue of Jefferson; aspects of Jefferson's life as reflected by his memorial; history of the Declaration of Independence, Tidal Basin, and the Japanese Cherry Trees. Meet in front of the Statue in Jefferson Memorial.
- NATURE'S AMAZING INSECTS 2:30 p.m. A guest leader describes the wonderful world of insects on a stroll along the C & O Canal. Meet at MacArthur Blvd. & Cornell Ave., Glen Echo, Md. (Stop 39, Cabin John car line).
- WATERGATE CONCERT 8:30 p.m. United States Marine Band. See page 14.
- July 3 Tues. WATERGATE CONCERT 8:30 p.m. United States Army Band. See page 14.
- SATURN AND OTHER WORLDS: An Evening Adventure 9 p.m. Powerful telescopes focus on Saturn and other wonders of the sky. Special illustrated talk on the planets. Barnard Hill Park -- follow signs from intersection of Bunker Hill Rd. & Eastern Ave. NE.
- July 4 Wed. INDEPENDENCE DAY CELEBRATION Washington Monument. See newspapers for details.
- SUMMER FLOWERS 8:30 and 10 a.m. Tours of the lily ponds in Kenilworth Aquatic Gardens. See page 4.
- ON A SUMMER AFTERNOON 2 p.m. Nature exploration along the trails of Theodore Roosevelt Island. See page 4.



A robin feeds her young

July 4 BARGE TRIPS 2 and 4 p.m. See page 3.
Wed.

July 5 SNAKES ALIVE! An Evening Adventure 8 p.m. Live reptiles and
Thurs. color motion pictures are shown. Meet at the Naturevan in the
Picnic Area on Hains Point, East Potomac Park.

WATERGATE CONCERT 8:30 p.m. United States Navy Band.
See page 14.

July 6 SYLVAN THEATRE 8:45 p.m. See page 10.
Fri.

WATERGATE CONCERT 8:30 p.m. United States Air Force
Symphony Orchestra. See page 14.

July 7 BIRD WALK 7 a.m. An early morning stroll with the summer
Sat. birds of Kenilworth Aquatic Gardens. See page 4.

KENILWORTH'S AQUATIC WORLD 8:30 and 10 a.m. Pleasant
morning tours through Kenilworth Aquatic Gardens. See page 4.

WILDLIFE ON ROOSEVELT ISLAND 10 a.m. and 2 p.m. Discover
the trees, flowers, birds, and animals on Theodore Roosevelt Island.
Ferry operates from 9 a.m. to 4 p.m. today. See page 4.

AN EVENING IN YELLOWSTONE 9 a.m. Adventuring by movies
in Wyoming's wild and wonderful Yellowstone National Park; also
selected short subjects. On the lawn at Rock Creek Nature Center.
See page 4.

July 8 BIRDING ON THE OLD CANAL 8 and 10 a.m. Exciting bird
Sun. walks along the C & O Canal. Meet at Ridge Dr. & 61st St.,
Brookmont, Md. (Stop 24, Cabin John car line).

FLOWER WALKS 8:30 and 10 a.m. Special tours through the flower
wonderland of Kenilworth Aquatic Gardens. See page 4.

Schedule of Events — July

July 8 BARGE TRIPS 2 and 4 p.m. See page 3.

Sun.

AFTERNOON ON THE ISLAND 2 p.m. A conducted tour along forest trails on Theodore Roosevelt Island. See page 4.

HISTORICAL TOUR OF FORT STEVENS 2:30 p.m. The only restored fortification in Civil War defenses of Washington; story of the Confederate raid on Washington and Battle of Fort Stevens, July 11–12, 1864; visit to the smallest National Cemetery in the United States, where 40 of the Union dead are buried. Meet at Fort Stevens, Rittenhouse St. between Georgia Ave. & 13th St. NW.

WILD ANIMAL HOMES 7:30 p.m. Seeking out animal haunts on an evening exploration with a Naturalist. Kenilworth Aquatic Gardens. Bring flashlight. See page 4.

WATERGATE CONCERT 8:30 p.m. United States Marine Band. See page 14.

July 10 WAYS OF THE INDIAN: An Evening Adventure 8 p.m. Story of
Tues. the Indian, how he lived and his skillful use of native foods. Meet at the Naturevan (near Jeanne d'Arc Statue), Meridian Hill Park, 16th & Euclid Sts. NW.

WATERGATE CONCERT 8:30 p.m. United States Army Band. See page 14.

July 11 BARGE TRIP 6:30 p.m. See page 3.

Wed.

July 12 LIFE BENEATH THE WATER: An Evening Adventure 7:30 p.m.
Thurs. Conducted tour through Kenilworth Aquatic Gardens and color movies. Meet at the Naturevan. See page 4.

WATERGATE CONCERT 8:30 p.m. United States Navy Band. See page 14.

July 13 SYLVAN THEATRE 8:30 p.m. See page 10.

Fri.

WATERGATE CONCERT 8:30 p.m. United States Air Force Symphony Orchestra. See page 14.

July 14 BIRD WALKS 8 and 10 a.m. Looking for birds in the early morning.
Sat. C & O Canal. Meet at MacArthur Blvd. & Cornell Ave., Glen Echo, Md. (Stop 39, Cabin John car line).

Outdoor Program 1956

July 14 SUMMER WONDERLAND 8:30 and 10 a.m. Flower walks through
Sat. Kenilworth Aquatic Gardens. See page 4.

TRAILSIDE ADVENTURE 2 p.m. An afternoon nature stroll brings thrilling discoveries on Theodore Roosevelt Island. See page 4.

BARGE TRIPS 2 and 4 p.m. See page 3.

July 15 BIRDS OF POND AND MARSH 7 a.m. A morning bird walk at
Sun. Kenilworth Aquatic Gardens. See page 4.

BIRDS OF LINNAEAN HILL 8 a.m. Discover amazing bird life around Rock Creek Nature Center. See page 4.

THE FOREST IN SUMMER 2 p.m. Observe the infinite variety of life along woodland trails on Theodore Roosevelt Island. See page 4.

BARGE TRIPS 2 and 4 p.m. See page 3.

HISTORICAL TOUR: C & O CANAL IN GEORGETOWN 2:30 p.m. Brief history of the Canal and its importance to Georgetown; stories of canal life and operation, canal locks 1 to 4, Old Wisconsin Avenue Bridge and site of unloading wharves; Alexandria Aqueduct, Foxhall Cannon Foundry, and Foundry Branch Tunnel. Meet at Lock 4, one block south of Thomas Jefferson & M Sts. NW.

FERN WALK 3 p.m. A guest botanist introduces the wonderful world of ferns on an afternoon walk in Rock Creek Park. Meet at 16th & Whittier Sts. NW.

WATERGATE CONCERT 8:30 p.m. United States Marine Band. See page 14.

EXPLORING THE SKY 9 a.m. Fort Reno Park. Saturn displays its spectacular rings through the telescope. See page 4.

July 16 ESTABLISHMENT DAY, National Capital Parks, Sylvan Theatre,
Mon. 8:30 p.m. See newspapers for further information.

July 17 HOLIDAY IN YELLOWSTONE: An Evening Adventure 8 p.m.
Tues. Colorful days in some of the wonder areas of the National Park System. Meet the Naturevan at Picnic Area No. 7, Fort Hunt, Va., off Mt. Vernon Memorial Highway about 6.5 miles south of Alexandria. No public transportation available.

Schedule of Events — July

July 17 WATERGATE CONCERT 8:30 p.m. United States Army Band.
Tues. See page 14.

July 18 BARGE TRIP 6:30 p.m. See page 3.
Wed.

July 19 WILD ANIMALS OF WASHINGTON: An Evening Adventure
Thurs. 7:30 p.m. Live animals and color motion pictures. Meet the Nature-
van at Fort Greble, just off Nichols Ave. & Elmira St. SE.

WATERGATE CONCERT 8:30 p.m. United States Navy Band.
See page 14.

July 20 SYLVAN THEATRE 8:30 p.m. See page 10.
Fri.

WATERGATE CONCERT 8:30 p.m. United States Air Force
Symphony Orchestra. See page 14.

July 21 POWERBOAT REGATTA, Potomac Park. See newspapers for
Sat. details.

BIRD WALK 7 a.m. An early morning walk with a Naturalist
through Kenilworth Aquatic Gardens. See page 4.

LOTUS TIME 8:30 and 10 a.m. Flower walks among the lotus
ponds of Kenilworth Aquatic Gardens. See page 4.

NATURE WALK 10:30 a.m. A morning of discovery along the
C & O Canal. Meet at Ridge Dr. & 61st St., Brookmont, Md.
(Stop 24, Cabin John car line).

TRAIL TOUR 2 p.m. A Naturalist leads an afternoon exploring
trip around Theodore Roosevelt Island. See page 4.

BARGE TRIPS 2 and 4 p.m. See page 3.

ANIMAL HIKE 4 to 10:30 p.m. Twilight animal search along
the C & O Canal 3 miles from Swains Lock to Pennyfields Lock.
Meet at Capital Transit Office, 1013 15th St. NW. (Call
Columbia 5-9215, Ext. 653 for reservation.) Bring supper, drink,
and flashlight. Fare \$1.65.

July 22 POWERBOAT REGATTA, Potomac Park. See newspapers for
Sun. details.

BIRDS OF GARDEN AND FOREST 8 and 10 a.m. Morning bird
walks in Dumbarton Oaks Park. Meet at Avon Pl. & R St. NW.

FLOWER EXPLORATIONS 8:30 and 10 a.m. Conducted tours
among the lily ponds at Kenilworth Aquatic Gardens. See page 4.

July 22 BARGE TRIPS 2 and 4 p.m. See page 3.
Sun.

ANIMAL WALK 2 p.m. Searching for secret hideaways of skunks, foxes and other animals on Theodore Roosevelt Island. See page 4.

HISTORICAL TOUR OF ARLINGTON NATIONAL CEMETERY
2:30 p.m. History of Custis-Lee Mansion, Old Amphitheatre and Old Officers' Section of Cemetery; the Confederate Memorial, Monument of the Unknown Dead of the Civil War, Maine Mast, and Tomb of the Unknown Soldier. Meet at main entrance to Arlington National Cemetery. (Call Jackson 8-4000 for W.V. & M. Coach Co. bus schedule.)

WATERGATE CONCERT 8:30 p.m. United States Marine Band.
See page 14.

July 23 INTRODUCTION TO GEOLOGY 2 p.m. Nature class on minerals,
Mon. fossils, and rocks, with movies and chalk talks. Also meets
Wednesday and Friday at Rock Creek Nature Center. See page 4.

July 24 WONDERS IN MINIATURE: An Evening Adventure 7:30 p.m.
Tues. Exploring the insect world through exhibits and exciting new color
movies. Meet the Naturevan in Fort Reno Park, 40th & Chesapeake Sts. NW.

WATERGATE CONCERT 8:30 p.m. United States Army Band.
See page 14.

July 25 INTRODUCTION TO GEOLOGY 2 p.m. Nature class on rocks,
Wed. minerals and fossils, with movies and chalk talks. Also meets on
Friday of this week at Rock Creek Nature Center. See page 4.

BARGE TRIP 6:30 p.m. See page 3.

July 26 ONE BILLION, B.C. Evening Adventure in Geology 8 p.m. Travel
Thurs. back through time to discover the changing earth's surface. Illustrated talk and spectacular motion picture, "Face of the Earth." Meet the Naturevan at Montrose Park, Avon Pl. & R St. NW.

WATERGATE CONCERT 8:30 p.m. United States Navy Band.
See page 14.

July 27 INTRODUCTION TO GEOLOGY 2 p.m. Nature class on rocks
Fri. and minerals, with specimens, movies and chalk talks. Meet at
the Rock Creek Nature Center. See page 4.

SYLVAN THEATRE 8:30 p.m. See page 11.

Schedule of Events — July

July 27 WATERGATE CONCERT 8:30 p.m. United States Air Force
Fri. Symphony Orchestra. See page 14.

July 28 BIRD WALKS 8 and 10 a.m. Birds on a summer morning along the
Sat. C & O Canal. Meet at Ridge Dr. & 61st St., Brookmont, Md.
(Stop 24, Cabin John car line).

FLOWER WALKS 8:30 and 10 a.m. Summer's peak floral display
at Kenilworth Aquatic Gardens. See page 4.

NATURE CRAFTS DEMONSTRATIONS 2 p.m. What to do and
make with outdoor materials, as shown by a Park Naturalist at
Rock Creek Nature Center. See page 4.

ISLAND IN THE POTOMAC 2 p.m. History and wildlife on a trail
tour around Theodore Roosevelt Island. See page 4.

BARGE TRIPS 2 and 4 p.m. See page 3.

July 29 EXPLORING FOR BIRDS 7 a.m. A bird walk through Kenilworth
Sun. Aquatic Gardens in the cool of the morning. See page 4.

NATURE WALKS 8:30 and 10 a.m. The plants and animals of
Kenilworth Aquatic Gardens. See page 4.

SUMMER IN THE FOREST 2 p.m. Discover life of a forest in
mid-summer on Theodore Roosevelt Island. See page 4.

BARGE TRIPS 2 and 4 p.m. See page 3.

THE TREES OF LINNAEAN HILL 2 and 4 p.m. Tour the mansion
grounds and see native and imported trees at Rock Creek Nature
Center. See page 4.

AN EVENING AT GRAND CANYON 9 p.m. Adventuring by movies
in Grand Canyon National Park, Arizona; also selected short
subjects. At Rock Creek Nature Center. See page 4.

WATERGATE CONCERT 8:30 p.m. United States Marine Band.
See page 14.

July 31 THE WORLD OF REPTILES: An Evening Adventure 8 p.m. Live
Tues. snakes, an illustrated talk, and color movies. Meet the Naturevan
in Rock Creek Park, Picnic Grove No. 7 (near Miller Cabin, 1/4
mile north of Military Rd. & Beach Dr. NW.).

WATERGATE CONCERT 8:30 p.m. United States Army Band.
See page 14.

SCHEDULE OF EVENTS - AUGUST

Aug. 1 BARGE TRIP 6:30 p.m. See page 3.
Wed.

Aug. 2 ROMANCE OF THE NATIONAL PARKS: An Evening Adventure
Thurs. 8 p.m. Travel the magic road to our National Parks with an illustrated talk. Meet the Naturevan at the Jeanne d'Arc Statue in Meridian Hill Park, 16th & Euclid Sts. NW.

WATERGATE CONCERT 8:30 p.m. United States Navy Band.
See page 14.

Aug. 3 SYLVAN THEATRE 8:15 p.m. See page 11.
Fri.

WATERGATE CONCERT 8:30 p.m. United States Air Force Symphony Orchestra. See page 14.

Aug. 4 BIRD WALK 7 a.m. Tours amid full-blooming lotus and water-lilies at Kenilworth Aquatic Gardens. See page 4.
Sat.

FLOWERS 8:30 and 10 a.m. Pleasant hours among the lily and lotus blooms at Kenilworth Aquatic Gardens. See page 4.

ANIMAL WALKS 10 a.m. and 2 p.m. on Theodore Roosevelt Island. Ferry operates today from 9 a.m. to 4 p.m. See page 4.

NATURE CRAFTS DEMONSTRATIONS 2 p.m. Using outdoor materials in nature crafts at Rock Creek Nature Center. See page 4.

BARGE TRIPS 2 and 4 p.m. See page 3.

Aug. 5 FLOWER WALKS 8:30 and 10 a.m. Morning walks through Kenilworth Aquatic Gardens. See page 4.
Sun.

WILDLIFE TOUR 2 p.m. The living story of nature's primitive woodland on Theodore Roosevelt Island. See page 4.

BARGE TRIPS 2 and 4 p.m. See page 3.

HISTORICAL TOUR OF LINCOLN MUSEUM & HOUSE WHERE LINCOLN DIED 2:30 p.m. The story of the assassination and death of Abraham Lincoln, the flight of assassin John Wilkes Booth, and a tour of the buildings. Meet at Lincoln Museum, 511 10th St. NW.



A barge trip on the C & O Canal

- Aug. 5 INSECT WALK 3:30 p.m. A guest expert tells the amazing story of insects along the C & O Canal. Meet at Ridge Dr. & 61st St., Brookmont, Md. (Stop 24, Cabin John car line).

WATERGATE CONCERT 8:30 p.m. United States Marine Band. See page 14.

EXPLORING THE SKY 9 p.m. Fort Reno Park. Wonders of the evening sky with Saturn's rings and moons of Jupiter. See page 4.

- Aug. 7 WONDERS OF WILDLIFE: An Evening Adventure 8 p.m. Outstanding color films on wildlife. Meet the Naturevan at Columbia Island parking area, 3/4 mile south of Memorial Bridge on Mt. Vernon Highway.

WATERGATE CONCERT 8:30 p.m. United States Army Band. See page 14.

- Aug. 8 BARGE TRIP 6:30 p.m. See page 3.

- Thurs. 9 LIFE OF THE INDIANS: An Evening Adventure 7:30 p.m. Lives and lore of Chesapeake Bay Indians. Meet Naturevan at Fort Totten, one block east of Hawaii Ave. & Allison St. NE.

WATERGATE CONCERT 8:30 p.m. United States Navy Band. See page 14.

- Aug. 10 SYLVAN THEATRE 8:15 p.m. See page 12.

Fri. WATERGATE CONCERT 8:30 p.m. United States Air Force Symphony Orchestra. See page 14.

- Aug. 11 NATURE TOURS 8:30 and 10 a.m. Conducted walks among the lily ponds of Kenilworth Aquatic Gardens. See page 4.

Outdoor Program 1956

Aug. 11 TREES---NATIVE AND EXOTIC 10:30 a.m. A naturalist-guided
Sat. walk through Montrose Park, Avon Pl. & R St. NW.

ON A SUMMER AFTERNOON 2 p.m. A trailside tour around
Theodore Roosevelt Island, sanctuary in the Potomac. See page 4.

BARGE TRIPS 2 and 4 p.m. See page 3.

Aug. 12 BIRDS OF MARSH AND POND 7 a.m. An early morning walk
Sun. through Kenilworth Aquatic Gardens. See page 4.

ROCK CREEK BIRDS 8 a.m. Identify summer birds along wooded
trails. Meet at Rock Creek Trail Center, just south of Military Rd.
& Beach Dr. NW.

FLOWER WALKS 8:30 and 10 a.m. Floral displays described on
tours through Kenilworth Aquatic Gardens. See page 4.

ISLAND WILDLIFE 2 p.m. Follow the trails on Theodore Roose-
velt Island, a memorial preserve reached only by boat. See page 4.

BARGE TRIPS 2 and 4 p.m. See page 3.

GEOLOGY WALK 3 p.m. A simple story of rocks and trailside
geology is told by a guest expert along the C & O Canal. Meet at
Sherrier & Manning Pls. NW. (Stop 20, Cabin John car line).

WATERGATE CONCERT 8:30 p.m. United States Marine Band.
See page 14.

Aug. 13 INTRODUCTION TO PLANTS 2 p.m. Use of flowers and plants
Mon. with specimens, chalk talks and movies. Also meets Wednesday and
Friday this week at Rock Creek Nature Center. See page 4.

Aug. 14 "DESTINATION MOON": An Evening Adventure 8:30 p.m. Explore
Tues. earth's closest neighbor through powerful telescopes and by motion
picture. Meet the Naturevan at Rock Creek Park Picnic Grove
No. 17 (1/4 mile south of Military Rd. & Oregon Ave. NW.).

WATERGATE CONCERT 8:30 p.m. United States Army Band.
See page 14.

Aug. 15 INTRODUCTION TO PLANTS 2 p.m. Many flowers and plants are
Wed. described with specimens, chalk talks and movies. Also meets on
Friday this week at Rock Creek Nature Center. See page 4.

BARGE TRIP 6:30 p.m. See page 3.

Schedule of Events - August

Aug. 16 CLOWNS IN THE FOREST: An Evening Adventure 8 p.m. Live
Thurs. animals are displayed, their lives described and followed by color
wildlife movies at Fort Dupont. Meet the Naturevan at Randle
Circle, Minnesota & Massachusetts Aves. SE.

WATERGATE CONCERT 8:30 p.m. United States Navy Band.
See page 14.

Aug. 17 INTRODUCTION TO PLANTS 2 p.m. Uses of mosses, ferns,
Fri. flowers, and trees with specimens, chalk talks and movies. Meet
at the Rock Creek Nature Center. See page 4.

SYLVAN THEATRE 8 p.m. See page 12.

WATERGATE CONCERT 8:30 p.m. United States Air Force
Symphony Orchestra. See page 14.

Aug. 18 BIRD WALK 7 a.m. An early morning stroll through Kenilworth
Sat. Aquatic Gardens. See page 4.

FLOWERS OF KENILWORTH 8:30 and 10 a.m. Morning walks
through Kenilworth's magnificent aquatic gardens. See page 4.

LIFE IN THE FOREST 10:30 a.m. Guided nature walk through
Rock Creek Park. Meet at Rock Creek Nature Center. See page 4.

ISLAND TOUR 2 p.m. The story of wildlife on Theodore Roose-
velt Island is told by a Park Naturalist. See page 4.

BARGE TRIPS 2 and 4 p.m. See page 3.

ANIMAL HIKE 4 to 9 p.m. An evening with a Naturalist, stalking
animals on a hike near Carderock, along the C & O Canal. Meet at
MacArthur Blvd. & Cornell Ave., Glen Echo, Md. (Stop 39, Cabin
John car line). Bring supper, drink, and flashlight.

AN EVENING IN YOSEMITE 8:30 a.m. Adventuring by movies in
Yosemite National Park, California; also selected short subjects.
At Rock Creek Nature Center. See page 4.

Aug. 19 BIRD WALKS 8 and 10 a.m. In cool of morning walk along the
Sun. C & O Canal. Meet at Ridge Dr. & 61st St., Brookmont, Md.
(Stop 24, Cabin John car line).

GARDEN TOURS 8:30 and 10 a.m. Pleasant morning strolls
through Kenilworth Aquatic Gardens. See page 4.

Outdoor Program 1956

Aug. 19 WILDLIFE WALK 2 p.m. Discover forest life along the trails
Sun. of Theodore Roosevelt Island. See page 4.

BARGE TRIPS 2 and 4 p.m. See page 3.

WATERGATE CONCERT 8:30 p.m. United States Marine Band.
See page 14.

Aug. 21 UNLOCKING YOSEMITE'S SECRETS: An Evening Adventure
Tues. 8 p.m. Follow this inviting movie road to Yosemite National Park,
California's land of waterfalls and towering cliffs. Meet the Nature-
van at Hains Point, East Potomac Park.

WATERGATE CONCERT 8:30 p.m. United States Army Band.
See page 14.

Aug. 22 BARGE TRIP 6:30 p.m. See page 3.
Wed.

Aug. 23 SNAKES--FACT AND FICTION: An Evening Adventure 8 p.m.
Thurs. Live reptiles and color movies highlight an exciting evening at
Langdon Park. Meet the Naturevan at Mills Ave. & Hamlin Pl. NE.

WATERGATE CONCERT 8:30 p.m. United States Navy Band.
See page 14.

Aug. 24 NATIONAL PARK SERVICE FOUNDER'S DAY 8 p.m. Sylvan
Fri. Theatre. See newspapers for details. See page 12.

WATERGATE CONCERT 8:30 p.m. United States Air Force
Symphony Orchestra. See page 14.

Aug. 25 FLOWER WALKS 8:30 and 10 a.m. Naturalist-led tours of the
Sat. lily ponds in Kenilworth Aquatic Gardens. See page 4.

MORNING ADVENTURE 10:30 a.m. A Naturalist explores the wild
outdoors on a morning stroll along the C & O Canal. Meet at
Sherrier & Manning Pls. NW. (Stop 20, Cabin John car line).

A SUMMER AFTERNOON 2 p.m. Summer forest life is described on
a trailside tour around Theodore Roosevelt Island. See page 4.

BARGE TRIPS 2 and 4 p.m. See page 3.

Aug. 26 BIRD WALK 7 a.m. An early morning walk in Kenilworth Aquatic
Sun. Gardens. See page 4.

Schedule of Events — August

Aug. 26 **BIRDS OF LINNAEAN HILL** 8 a.m. A quiet morning in this hilltop
Sun. sanctuary near the Rock Creek Nature Center. See page 4.

NATURE TOURS 8:30 and 10 a.m. Plants, birds, and other animals
on morning tours through Kenilworth Aquatic Gardens. See page 4.

ISLAND WALK 2 p.m. Around Theodore Roosevelt Island with a
Naturalist who knows the trailside intimately. See page 4.

BARGE TRIPS 2 and 4 p.m. See page 3.

FERNS 3 p.m. A guest expert identifies and describes wild ferns
on an afternoon stroll through Rock Creek Park. Meet at 16th &
Kalmia Sts. NW.

WATERGATE CONCERT 8:30 p.m. United States Marine Band.
See page 14.

Aug. 28 **LAND OF THE COWBOY: An Evening Adventure** 8 p.m. Cowboys,
Tues. cactus, caves and canyons beckon on a merry movie ride through
National Parks of the Southwest. Meet at the Naturevan in Lincoln
Park at East Capitol & 12th Sts.

Aug. 29 **BARGE TRIP** 6:30 p.m. See page 3.
Wed.

Aug. 30 **VOICES OF THE WILD: An Evening Adventure** 8 p.m. Nature's
Thurs. amazing songs and sounds, presented through color pictures and
special tape recordings. Meet the Naturevan at Jeanne d'Arc
Statue, Meridian Hill Park, 16th & Euclid Sts. NW.

Aug. 31 **SYLVAN THEATRE** 7:45 p.m. See page 12.
Fri.

Lotus in bloom at Kenilworth Aquatic Gardens



SCHEDULE OF EVENTS - SEPTEMBER

Sept. 1 **FOUR LOCKS, MD.** Caravan 8 a.m. to 5 p.m. Enjoy an autumn day in a beautiful section of the C & O Canal, hiking along the towpath for about three miles. Meet at Capital Transit Office, 1013 15th St. NW. (Call Columbia 5-9215, Ext. 653 for reservation.) Bring lunch and drink. Fare \$3.75. See page 2.

SEPTEMBER DAY 10 a.m. and 2 p.m. Early fall on Roosevelt Island. Ferry operates from 9 a.m. to 4 p.m. today. See page 4.

BARGE TRIPS 2 and 4 p.m. See page 3.

Sept. 2 **BIRD WALKS** 8 and 10 a.m. In early morning at Dumbarton Oaks Sun. Park. Meet at Avon Pl. & R St. NW.

ISLAND TRAILS 2 p.m. Explore favorite animal haunts along the trails on Theodore Roosevelt Island. See page 4.

BARGE TRIPS 2 and 4 p.m. See page 3.

ROCKS OF YESTERDAY 3 p.m. A trained geologist translates the story of ancient rocks along Rock Creek. Meet at the Harvard St. entrance to the National Zoological Park.

Sept. 3 **ISLAND SANCTUARY** 2 p.m. A quiet autumn afternoon with the forest life on Theodore Roosevelt Island. See page 4.

BARGE TRIPS 2 and 4 p.m. See page 3.

Sept. 4 **A TREE'S SECRET** 2 p.m. The life story of a tree, how it grows Tues. and the food it eats. See page 4.

UTAH TRAILS 8 p.m. Color movies of Utah's National Parks at the Rock Creek Nature Center. See page 4.

Sept. 5 **BARGE TRIP** 6:30 p.m. See page 3.
Wed.

Sept. 8 **MOSSES** 10 a.m. The story and identification of mosses in Rock Sat. Creek Park is interestingly described by a guest leader. Meet at 16th St. & Alaska Ave. NW.

ANIMAL HAUNTS 2 p.m. Mystery of life in the woods is explained along the trails on Theodore Roosevelt Island. See page 4.

Schedule of Events – September

- Sept. 8 BARGE TRIPS 2 and 4 p.m. See page 3.
Sat. NATURE CRAFTS 2 p.m. Simple hobbies and things to make from outdoor materials at Rock Creek Nature Center. See page 4.
- Sept. 9 BIRD WALK 8 a.m. Early morning walk along the trails of Rock Creek Park. Meet at 16th & Underwood Sts. NW.
Sun. AFTERNOON ON THE ISLAND 2 p.m. Unusual events in the lives of forest dwellers on Theodore Roosevelt Island. See page 4.
- BARGE TRIPS 2 and 4 p.m. See page 3.
- AMAZING INSECTS 3 p.m. Marvels of insect world simply explained by guest leader, along trails of Fort Dupont Park. Meet at Ridge Rd. & Texas St. SE.
- Sept. 15 PRESIDENT'S CUP REGATTA Hains Point. Watch local newspapers for program.
Sat. BIRD OBSERVATION 8 a.m. along the C & O Canal. Meet at MacArthur Blvd. & Cornell Ave., Glen Echo, Md. (Stop 39, Cabin John car line).
- BIRD WALKS 8 and 10 a.m. Early morning walks along the tow-path of the C & O Canal. See instructions above.
- TREES AT DUMBARTON 10:30 a.m. Interesting facts on life, growth and use of trees. Montrose and Dumbarton Oaks Parks. Meet at park entrance at Avon Pl. & R St. NW.
- FOREST LIFE 2 p.m. Explanation of the unusual animal community on Theodore Roosevelt Island. See page 4.
- BARGE TRIPS 2 and 4 p.m. See page 3.
- FLOWERS OF FALL 2:30 p.m. A guest expert identifies fall flowers at Fort Totten Park. Meet at Hawaii Ave. & Allison St. NW.
- Sept. 16 PRESIDENT'S CUP REGATTA Hains Point. Watch local newspapers for program.
Sun. BIRD OBSERVATION 8 a.m. Kenilworth Aquatic Gardens. See page 4.
- BIRD WALKS 8 and 10 a.m. along the C & O Canal. Meet Ridge Dr. & 61st St., Brookmont, Md. (Stop 24, Cabin John car line).

Sept. 16 FORT WASHINGTON, MD. Caravan 1:30 to 5:30 p.m. Tour through
Sun. present fort built between 1815-24, and site of earlier fort destroyed August 27, 1814, during the British attack on Washington. Meet at Capital Transit Office, 1013 15th St. NW. (Call Columbia 5-9215, Ext. 653 for reservation.) Fare \$1.50.

EXPLORING 2 p.m. An afternoon through the woods and along the trails of Theodore Roosevelt Island. See page 4.

BARGE TRIPS 2 and 4 p.m. See page 3.

Sept. 19 CAMPFIRE DAY Watch local newspapers for program. Rock Creek
Sat. Park Picnic Grove No. 7 (near Miller Cabin and 1/4 mile north of Military Road & Beach Dr. NW.)

Sept. 22 BIRD OBSERVATION 8 a.m. at Fort Hunt, Va. Meet at junction
Sat. of Fort Hunt Rd. & Mt. Vernon Memorial Highway, about 6½ miles south of Alexandria. No public transportation available.

MUSHROOMS 10:30 a.m. Exploring for wild mushrooms with a guest expert in Rock Creek Park. Meet at 16th & Kalmia Sts. NW.

SIGNS OF NATURE 2 p.m. A Park Naturalist translates animal signs along the trails on Theodore Roosevelt Island. See page 4.

BARGE TRIPS 2 and 4 p.m. See page 3.

ROMANCE OF THE NATIONAL PARKS 7:30 p.m. It's open house night at the Rock Creek Nature Center, with campfire, music and color movies of National Parks of the fabulous West. See page 4.

Sept. 23 BIRD WALK 8 a.m. Early morning stroll in Kenilworth Aquatic
Sun. Gardens amid migratory birds of marsh and meadow. See page 4.

C & O CANAL AT GREAT FALLS Caravan 1:30 to 5:30 p.m. Tour of Canal Museum; history of Potomac Canal, C & O Canal, and Great Falls Tavern Building; stories of life on the Canal, canal engineering, and operation, including inspection of locks and other canal structures. Meet at Capital Transit Office, 1013 15th St. NW. (Call Columbia 5-9215, Ext. 653 for reservation.) Fare \$1.50.

NATURE HOMES 2 p.m. Homes and haunts of native birds and other animals are explored on Theodore Roosevelt Island. See page 4.

BARGE TRIPS 2 and 4 p.m. See page 3.



Many groups enjoy plant and animal life along the C & O Canal

Sept. 23 **ANIMALS ALONG THE C & O CANAL** 3 p.m. Animal signs along
Sun. the towpath. Meet at Ridge Dr. & 61st St., Brookmont, Md.
(Stop 24, Cabin John car line).

Sept. 29 **LEVEL WALKERS HIKE** 9 a.m. to 5 p.m. along C & O Canal for
Sat. 6.6 miles from Great Falls to Cabin John Run for the first hike of
fall season. Meet at Capital Transit Office, 1013 15th St. NW.
(Call Columbia 5-9215, Ext. 653 for reservation.) Bring lunch
and drink. Fare \$1.10.

BARGE TRIPS 2 and 4 p.m. See page 3.

WILD NATURE 2 and 4 p.m. Afternoon walks through forest,
marsh and meadow for a pleasant adventure on this island
sanctuary. Ferry operates from 1 to 9 p.m. today. See page 4.

CAMPFIRE 6:30 p.m. A wild animal stalk and Indian lore around
the campfire on Theodore Roosevelt Island. Bring flashlight.
Ferry operates from 1 to 9 p.m. today. See page 4.

Sept. 30 **WASHINGTON'S SKYLINE** Caravan 1 to 5:30 p.m. From scenic
Sun. vantage points within the city, a guest geologist translates the
transformation of snow-capped ancient mountains and rushing
rivers to the serene coastal plain on which the city now rests.
Meet at Capital Transit Office, 1013 15th St. NW. (Call
Columbia 5-9215, Ext. 653 for reservation.) Fare \$1.50.

ISLAND WOODLAND 2 p.m. A pleasant afternoon along the
trails of Theodore Roosevelt Island. See page 4.

BARGE TRIPS 2 and 4 p.m. See page 3.

HISTORICAL TOUR OF LAFAYETTE PARK 2:30 p.m. Phases of
our national history as reflected by Lafayette Square; history of
nearby homes and statues in park; stories about Randolph-Clay
duel, Peggy O'Neal, St. John's Church, and the "Little White
House." Meet at Jackson Statue in center of Lafayette Park.

EXPLORING THE SKY 7 p.m. Fort Reno Park. Powerful tele-
scopes focus on Mars, now particularly brilliant. See page 4.

SCHEDULE OF EVENTS - OCTOBER

- Oct. 6 BIRD OBSERVATION 8 a.m. Meet at Leiter Uplands gateway,
Sat. 2 miles north of Chain Bridge on Virginia State Route No. 123.
No public transportation available.

BIRD WALKS 8 and 10 a.m. Fall morning with the birds. Meet at gateway of Leiter Uplands. See directions above.

FALL AFTERNOON 2 p.m. An afternoon stroll along the trails of Theodore Roosevelt Island. See page 4.

BARGE TRIPS 2 and 4 p.m. See page 3.

ADVENTURES IN GEOLOGY 2 p.m. Movies and demonstrations on the earth's amazing rocks, minerals and fossils at the Rock Creek Nature Center. See page 4.

AUTUMN IN ROCK CREEK PARK 2:30 p.m. Hike along a loop trail in Rock Creek Park from the Rock Creek Trail Center just south of Military Rd. & Beach Dr. NW.

EVENING CAMPFIRE 7 p.m. An evening stroll along the C & O Canal is climaxed at the campfire with the Naturevan bringing music and movies. Bring flashlight. Meet at MacArthur Blvd. & Cornell Ave., Glen Echo, Md. (Stop 39, Cabin John car line).

- Oct. 7 BIRD WALK 8 a.m. A morning with the birds of Linnaean Hill
Sun. at the Rock Creek Nature Center. See page 4.

LEVEL WALKERS HIKE 9 a.m. to 5 p.m. 6.5 miles along the C & O Canal from Noland's Ferry to Woods Lock. Meet at Capital Transit Office, 1013 15th St. NW. (Call COLUMBIA 5-9215, Ext. 653 for reservation.) Bring lunch and drink. Fare \$2.20.

AFTERNOON IN FALL 2 p.m. Pleasant hours along the nature trails of Theodore Roosevelt Island. See page 4.

BARGE TRIPS 2 and 4 p.m. See page 4.

MOSESSES 3 p.m. Explore for mosses along shady Rock Creek with a guest leader. Meet at Rock Creek Nature Center. See page 4.

- Oct. 13 LEVEL WALKERS HIKE 9 a.m. to 5 p.m. along the C & O Canal
Sat. 8.5 miles, Great Falls Tavern to Seneca Aqueduct. Meet at Capital Transit Office, 1013 15th St. NW. (Call COLUMBIA 5-9215, Ext. 653 for reservation.) Bring lunch and drink. Fare \$1.70.

Schedule of Events — October

Oct. 13 OCTOBER AFTERNOON 2 p.m. Discover the ways of the woods dwellers of Theodore Roosevelt Island. See page 4.
Sat.

BARGE TRIPS 2 and 4 p.m. See page 3.

WILDLIFE ADVENTURES 2 p.m. Classes, movies and forest animals at the Rock Creek Nature Center. See page 4.

FALL TREES 3 p.m. Stroll along Rock Creek trails on an autumn afternoon. Meet at 16th & Geranium Sts. NW.

Evening Adventure with the Naturevan



Oct. 13 AUTUMN CAMPFIRE 7:30 p.m. Learn the amazing ways of the Indian at Rock Creek Nature Center's campfire. See page 4.
Sat.

EXPLORING THE SKY 7 p.m. Fort Reno Park. View constellations and Mars' grandeur with the astronomers. See page 4.

Oct. 14 SHENANDOAH NATIONAL PARK Caravan 7:30 a.m. to 8 p.m. View lovely autumn colors along famous skyline drive as Park Naturalists translate significant natural features at scenic roadside overlooks. Meet at Capital Transit Office, 1013 15th St. NW. (Call Columbia 5-9215, Ext. 653 for reservation.) Bring lunch and drink. Fare \$5.20. See page 2.
Sun.

FALL ON THE ISLAND 2 p.m. Wonders of the woods appear along the trails of Theodore Roosevelt Island. See page 4.

Outdoor Program 1956

Oct. 14 BARGE TRIPS 2 and 4 p.m. See page 3.
Sun.

HISTORIC TOUR OF BRIDGE STREET (M), GEORGETOWN
2:30 p.m. Colorful stories of life in Old Georgetown told along this
historic street from the Key Bridge to 30th & M Sts. NW. History
of Georgetown taverns, The Old Stone House, and C & O Canal.
Meet at M St. end of the Key Bridge, Georgetown.

Oct. 20 BIRD OBSERVATION 8 a.m. along the Canal. Meet at MacArthur
Sat. Blvd. & Walhonding Rd. (Stop 30, Cabin John car line).

AFTERNOON IN FALL 2 and 4 p.m. Shy creatures are found
along autumn woodland trails on Theodore Roosevelt Island.
Ferry operates from 1 to 9 p.m. today. See page 4.

BARGE TRIPS 2 and 4 p.m. See page 3.

AUTUMN HIKE 2 p.m. Beauty of fall is displayed along
Fort Dupont Park's woodland trails. Meet at Ridge Rd. &
Texas St. SE.

ADVENTURES IN PLANTS 2 p.m. Classes, movies and use of
trees and plants in crafts at Rock Creek Nature Center. See page 4.

ISLAND CAMPFIRE 6:30 p.m. Evening animal stalk with infra-red
light and a romantic hour of singing and nature lore by the camp-
fire on Theodore Roosevelt Island. Bring flashlight. Ferry
operates from 1 to 9 p.m. today. See page 4.

Oct. 21 BIRD WALKS 8 and 10 a.m. Along the fall trails of Rock Creek
Sun. Park. Start the loop walk from the Rock Creek Trail Center just
south of Military Rd. & Beach Dr. NW.

LEVEL WALKERS HIKE 9 a.m. to 5 p.m. Along C & O Canal 8
miles from Seneca Aqueduct to Edwards Ferry. Meet at Capital
Transit Office, 1013 15th St. NW. (Call Columbia 5-9215, Ext. 653
for reservation.) Bring lunch and drink. Fare \$1.95.

OCTOBER ISLAND 2 p.m. Observe the changing season in the
woodland on Theodore Roosevelt Island. See page 4.

BARGE TRIPS 2 and 4 p.m. See page 3.

FALL TREES 3 p.m. On the Canal. Meet MacArthur Blvd &
Cornell Ave., Glen Echo, Md. (Stop 39, Cabin John car line).

Schedule of Events — October

Oct. 27 LEVEL WALKERS HIKE 9 a.m. to 5 p.m. 6 miles along C & O Canal near Shepherdstown. Meet at Capital Transit Office, 1013 15th St. NW. (Call Columbia 5-9215, Ext. 653 for reservation.) Bring lunch and drink. Fare \$3.75.

FALL ISLAND 2 p.m. A quiet afternoon on autumn trails of Theodore Roosevelt Island in the Potomac. See page 4.

BARGE TRIPS 2 and 4 p.m. See page 3.

ADVENTURES IN ASTRONOMY 2 p.m. Classes with movies about the planets and stars at Rock Creek Nature Center. See page 4.

CANAL CAMPFIRE 7 p.m. A twilight walk along the C & O Canal, singing around a campfire and movies from the Naturevan crown an evening's pleasant adventure. Bring flashlight. Meet at Ridge Dr. & 61st St., Brookmont, Md. (Stop 24, Cabin John car line).

Oct. 28 BIRD OBSERVATION 8 a.m. Ducks return. Meet at Roaches Run Waterfowl Sanctuary about ½ mile south of Highway Bridge bus stop on Mount Vernon Memorial Highway. (Call King 9-7800 for A.B. & W. bus schedule.)

BIRD WALKS 8 and 10 a.m. Ducks and other water birds at the Roaches Run Waterfowl Sanctuary. See directions above.

CATOCTIN PARK IN FALL 8:30 a.m. to 6 p.m. Caravan to Catoctin Mountain Park, Thurmont, Md. Picnicking, hiking, and exploring. Meet at Capital Transit Office, 1013 15th St. NW. (Call Columbia 5-9215, Ext. 653 for reservation.) Bring lunch and drink. Fare \$3.30. See page 2.

ISLAND SANCTUARY 2 p.m. An afternoon with the trees and animals on Theodore Roosevelt Island. See page 4.

BARGE TRIPS 2 and 4 p.m. See page 3.

Nature lore is told around the campfire





Early history is explained in Lafayette Park

SCHEDULE OF EVENTS – NOVEMBER

Nov. 3 **AUTUMN HIKE** 2 p.m. Follow Rock Creek trails about 5 miles, see grain ground by water power at historic Pierce Mill and return to Rock Creek Trail Center just south of Military Rd. & Beach Dr. NW.

OUR NATIONAL PARKS 2 p.m. A thrilling adventure through the magic eyes of a color camera to our western National Parks at the Rock Creek Nature Center. See page 4.

Nov. 4 **BEAR ISLAND** 9 a.m. to 5 p.m. Hike from Great Falls to Cropley as a guest expert explains nature's story in Bear Island's rocks. Meet at Capital Transit Office, 1013 15th St. NW. (Call Columbia 5-9215, Ext. 653 for reservation.) Bring lunch and drink. Fare \$1.50.

Nov. 10 **LEVEL WALKERS HIKE** 9 a.m. to 5 p.m. From Edwards Ferry to Woods Lock along C & O Canal 6.5 miles. Meet at Capital Transit Office, 1013 15th St. NW. (Call Columbia 5-9215, Ext. 653 for reservation.) Bring lunch and drink. Fare \$1.95.

PRINCE WILLIAM FOREST PARK Caravan 10 a.m. to 4 p.m. Hike over woodland trails, visit the new nature center and picnic under the pines at Prince William Park. Meet at Capital Transit Office, 1013 15th St. NW. (Call Columbia 5-9215, Ext. 653 for reservation.) Bring lunch and drink. Fare \$1.65.

INDIAN DAY 2 p.m. Classes, movies and tape recordings of Indian dances at the Rock Creek Nature Center. See page 4.

Schedule of Events — November

Nov. 17 POTOMAC HIKE 2 p.m. Travel along Virginia shore of Potomac River 4.5 miles between Chain Bridge and Rosslyn Circle. Primitive trail requires sturdy walking shoes. Meet at Sherrier & Manning Pls. NW. (Stop 30, Cabin John car line).

ADVENTURE WITH BIRDS 2 p.m. Classes, movies, bird games and bird calls at Rock Creek Nature Center. See page 4.

Nov. 18 LEVEL WALKERS HIKE 10 a.m. to 5 p.m. Walk 7.1 miles along the C & O Canal from Rock Creek to Cabin John Run. Meet at M & 28th Sts. NW. Bring lunch and drink.

Nov. 24 LEVEL WALKERS HIKE 9 a.m. to 5 p.m. Follow along C & O Canal 7 miles, Lander to Noland's Ferry. Meet at Capital Transit Office, 1013 15th St. NW. (Call Columbia 5-9215, Ext. 653 for reservation.) Bring lunch and drink. Fare \$2.20.

WINTER FUN 2 p.m. Games, movies, things to see and what to do in winter. Rock Creek Nature Center. See page 4.

Nov. 25 FALL TRAILS 2 p.m. Hike about 5 miles along Rock Creek's woodland trails returning to Rock Creek Trail Center just south of Military Rd. & Beach Dr. NW.

Nov. 30 NOVEMBER HIKE 2 p.m. Travel along 4 miles of Rock Creek trails via Dumbarton Oaks Park to Pennsylvania Ave. for the season's last hike. Meet at the Connecticut Ave. entrance to National Zoological Park.

Ducks are commonly seen at Roaches Run Waterfowl Sanctuary





THE SYLVAN THEATRE

Each Friday night during June, July, and August a distinguished outdoor program is held in the Sylvan Theatre on the Washington Monument grounds. Each includes a half-hour concert or dance presentation and an illustrated talk of approximately an hour by a guest speaker.

The Sylvan Theatre may be reached from street cars on 14th St. marked "Bur. Engraving." Ample parking space for cars is available on the Monument grounds roadways and along the westbound lane of Independence Avenue.

If the weather is unfavorable, the program will be held in the Commerce Department Auditorium on 14th St. between Constitution Ave. & E St. NW. A sign on the Sylvan Theatre stage and at the Commerce Building entrance will announce change of location. If in doubt, call the Park Police (REpublic 7-1820, Ext. 3161) after 6:30 p.m. on the program date.

This summer's series features a wide variety of program destinations, including Mexico, the Alps, America's fabulous Everglades, Australia, and even a journey into outer space -- all told by men who know their subject well. They, and the dance and music groups, appear as a public service. To them, the sincere thanks of National Capital Parks.

SYLVAN THEATRE SCHEDULE

June 1 FOLK SONGS FROM MANY LANDS 8:45 p.m.

Fri.

FABULOUS SWITZERLAND AND SOUTHERN FRANCE 9:15 p.m.
Dr. R. H. Bogue guides us on a scintillating tour of Switzerland and southern France—Murren, the ramparts of the Jungfrau and the Matterhorn, Zermatt and Gornegrat, down the storied Rhone from Lyon to historic Avignon, the gorges of Verdun, and to Cannes, Nice, and Monte Carlo. Dr. Bogue, a consulting engineer formerly with the National Bureau of Standards, illustrates this incomparable tour with distinctive color pictures.

June 8 GILBERT & SULLIVAN SELECTIONS 8:45 p.m. Montgomery

Fri. Light Opera Association, J. Finley Cheston, director.

IT'S ALL WET! People in various parts of the country have different names for similar geographic features. The astonishing variety of such everyday terms is described by Dr. Meredith F. Burrill, Director of the Interior Department's Office of Geography, in a talk about many kinds of wetlands and what they are called, with color photographs from a three-year inquiry into this intriguing facet of Americana.

June 15 CHOIR 8:45 p.m. First Congregational Church, Whitford L. Hall,
Fri. director; Marion E. Gibbons, accompanist.

LAND OF THE SHAMROCK 9:15 p.m. Ireland! Here is a grand tour of the wonderful Emerald Isle — gay, picturesque, irresistible — with Dr. Henry L. Darner as guide and story-teller. Dr. Darner's camera magic captures Erin's exquisite charm and opens a fascinating window on peat digging in the Wicklow Mountains, on fabled Tipperary, on the Giant's Causeway, on the historic region of St. Patrick — all with intimate views of Ireland's unparalleled countryside.

June 22 CHORAL CONCERT 8:45 p.m. Augustana Lutheran Church Choir,
Fri. R. E. Snesrud, director.

COWBOY COUNTRY — MODERN STYLE 9:15 p.m. The romantic old West still lives in the vast, brooding expanses of Federal ranchland where age-old customs survive in tending herds on the range. But how times are changing! Modern methods, ideas, and techniques in range conservation and management have opened new horizons. Royale K. Pierson, Bureau of Land Management, Department of the Interior, illustrates his program with color transparencies and a showing of the new film, "Grass the ELKO Way."

June 29 CONCERT 8:45 p.m. Federation of Churches TV Choir,
Fri. Dr. Orville O. Luedtke, director; Mrs. Mary Moore, accompanist.

EARTH'S SECOND SATELLITE 9:15 p.m. Launching the new space satellite -- MOUSE -- during 1957's Geophysical Year opens undreamed-of possibilities. Here an expert tells what will happen. Dr. S. F. Singer, Associate Professor of Physics at the University of Maryland, describes the tremendous forces which will control the movements of the tiny satellite, how the earth's atmosphere will affect it, what scientists will learn (including weather prediction), and how the results will affect our way of living.

July 6 STRING ENSEMBLE 8:45 p.m. United States Army Band.
Fri.

SCENIC AMERICA 9:15 p.m. From the Statue of Liberty to Key West, from Big Bend's cactus country to the snow-capped Sierra Nevada, this country of ours is an incredible scenic wonderland. Kenneth O. Peters takes us on a tour of it including many of the national parks and some outstanding views of Arizona's Grand Canyon, all in the same fine tradition as his 1955 Sylvan Theatre program on Alaska.

July 13 MADRIGAL SINGERS 8:30 p.m. The Oriana Madrigal Singers,
Fri. Dr. W. LeGrand Maxwell, director.

ANTARCTIC HORIZONS 9 p.m. William E. Davies, who represented the United States Geological Survey on the U.S.S. *Atka* Expedition, describes Antarctica's scientific problems and extraordinary future. Mr. Davies shows scenes just back from Operation Deepfreeze-- and illustrates his talk with pictures from the White Continent: penguins, seals, and skua gulls, shelf ice and snow-covered mountains, buried headquarters of old expeditions, and the adventure of weasel trips into the interior.

July 20 CHORAL CONCERT 8:30 p.m. Pentagon Choral Club,
Fri. Whitford L. Hall, Director; Mrs. Mary-Paget Langalis, accompanist.

YANKEE DOWN UNDER 9 p.m. As a Fulbright lecturer, Dr. T. R. Schellenberg, Director of Archival Management at the National Archives, toured Australia in 1954. Here is Aussie land as he saw it--the cities and their people, universities, farms, vineyards, sheep stations, mines, the coal fields of Victoria and the visit of Queen Elizabeth to Adelaide.



Great Falls of the Potomac River

July 27 FOLK DANCING 8:30 p.m. Washington Folk Dance Group, sponsored by D. C. Recreation Department: Dave Rosenberg, leader.
Fri.

ECLIPSE TRAVELOGUE 9 p.m. From the Applied Physics Laboratory, Johns Hopkins University, a team of scientists visited Ceylon recently to photograph an annular eclipse of the sun. Here, presented by a member of the expedition, is the story of the trip to India and Ceylon—including scenes from Scotland, Tripoli, Cairo, Dhahran, New Delhi, and Colombo.

Aug. 3 DANCE PRESENTATION 8:15 p.m. Washington Dance Company, member Modern Dance Council of Washington.
Fri.

Outdoor Program 1956

Aug. 3 THROUGH THE SEASONS 8:45 p.m. W. Bryant Tyrrell presents a
Fri. discerning motion picture interpretation of the changing outdoor
(con.) world. Against a background of the march of seasons—including
autumn in New England—his camera glimpses growth and progress
of the great horned owl, the crow, and the bobwhite, and catches
illuminating scenes of wild flowers, animals, and other life in the
fields and woods.

Aug. 10 FOLK DANCE PROGRAM 8:15 p.m. Washington Folk Dance Group,
Fri. sponsored by D. C. Recreation Department: Dave Rosenberg, leader.

FROM THE SEINE TO THE ALPS 8:45 p.m. Charles A. Brun
travels to his native Switzerland, with enchanting pauses at the
Eiffel Tower (comparing the striking similarity of views from our
own Washington Monument), with artists on the Montmartre, and in
the gardens of Luxembourg. In Switzerland "time stands still" in
picturesque valleys en route to the resort town of Vevey on
Lake Geneva. A colorful evening in a colorful land.

Aug. 17 BARBERSHOP HARMONY 8 p.m. The Singing Capital Chorus;
Fri. Edward A. Carey, director, and Barbershop Quartets of the
D. C. Chapter S.P.E.B.S.Q.S.A.

GLAMOUR BIRDS OF THE EVERGLADES 8:30 p.m. Back from
the subtropical enchantment of Florida's southern tip,
J. Donald Sutherland, past president of the Washington Society of
Cinematographers, presents motion pictures of the fabulous bird
world of the Everglades. He shows anhingas, flamingoes, ibises,
herons and egrets, crows in a courting sequence, the rare roseate
spoonbill nesting, and a flight squadron of white pelicans winging
in for a school of fish....discriminating pictures from a wild and
watery country.

Aug. 24 NATIONAL PARK SERVICE FOUNDERS DAY 8 p.m. Program
Fri. to be announced.

Aug. 31 CHOIR CONCERT 7:45 p.m. New York Avenue Presbyterian
Fri. Church Choir, Stephen H. Prussing, director.

MEXICO TODAY 8:15 p.m. Setting out from the region of magic
Taxco, an ancient Indian town, this all-color motion picture pro-
duced by A. H. Lochner, Washington Society of Cinematographers,
tours modern Mexico, with scenes of peasant handiwork, still-
primitive farming and burro transport, and the amazing contrast of
ultra-modern highways, homes, schools, and industry. Here you
will enjoy an Independence Day parade, watch a bull fight, and go
boating on the canals of Mexico City's floating gardens.

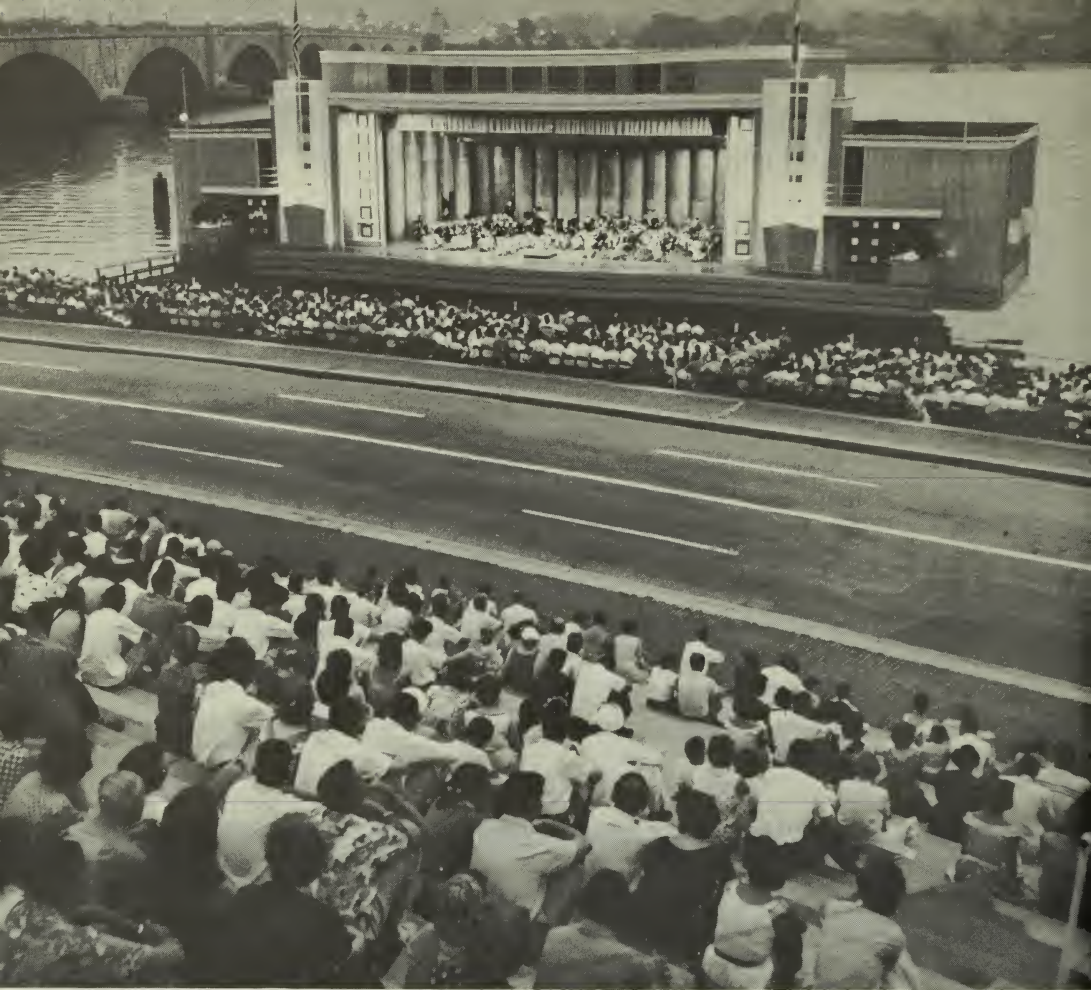
CARTER BARRON AMPHITHEATER

Each evening from about June 1 through Labor Day special summer entertainment is presented under the stars at Carter Barron Amphitheater in Rock Creek Park adjacent to 16th St. & Colorado Ave. NW. It is reached via the 16th St. bus line and 14th St. street cars. Special buses await theatergoers at the theater entrance after each performance. A paved parking area accommodates over 700 automobiles.

Programs feature Musicals and Operettas direct from Broadway, Symphony Concerts and Folk Music with outstanding guest artists and Ballets featuring internationally famous dancing stars. All performances begin at 8:30 p.m. The complete summer schedule is available April 15.

Tickets are on sale at Carter Barron Amphitheater Box Office, Rock Creek Park (Phone TUCKerman 2-2620), and at the Super Music City Box Office, 1350 F St. NW. (Phone STerling 3-3916). For program information write: Superintendent, National Capital Parks, Room 1211, Interior Building, Washington 25, D. C.





SPECIAL EVENTS

The CHERRY BLOSSOM FESTIVAL, several REGATTAS, including the PRESIDENT'S CUP REGATTA and a number of special CELEBRATIONS are held throughout the year. Dates for these events are shown in the color insert. Watch the newspapers or call REpublic 7-1820, Ext. 2095 for detailed information.

WATERGATE CONCERTS. From June 14 through August 26 concerts featuring popular, symphonic, and patriotic music are presented by the United States Air Force Symphony Orchestra, the United States Army Band, the United States Navy Band and the United States Marine Band. All concerts begin at 8:30 p.m. The Watergate is located on the Potomac River near the Lincoln Memorial, just north of Arlington Memorial Bridge. Parking is available on adjacent streets and park drives. The Watergate may also be reached via Potomac Park buses. In case of rain, these concerts are cancelled.

THE 1957 ISSUE OF
OUTDOOR PROGRAM
WILL BE PUBLISHED NEXT MARCH.
FOR COPIES, WRITE:

THE SUPERINTENDENT
NATIONAL CAPITAL PARKS
UNITED STATES DEPARTMENT OF THE INTERIOR
WASHINGTON 25, D. C.



WINTER IN NATIONAL CAPITAL PARKS

The winter program of National Capital Parks includes a variety of activities. School talks about local history and the meaning of natural life in the city parks are given to schools upon request. Nature crafts made from outdoor materials form an important part of the Nature Center program. Talks illustrated with color film are presented by guest speakers at monthly intervals in the Interior Department Auditorium. For information, write the Superintendent, National Capital Parks.

Department of the Interior
National Park Service
National Capital Parks
Washington 25, D. C.



For additional copies of the *Outdoor Program 1956*, or for
further information, please call

The Park Naturalist, REpublic 7-1820, Ext. 2557

or

The Park Historian, REpublic 7-1820, Ext. 2565

Saturdays, Sundays, and holidays call

The Park Police, REpublic 7-1820, Ext. 3161