







UNITED STATES  
DEPARTMENT OF THE INTERIOR  
NATIONAL PARK SERVICE

Yellowstone National Park, Wyoming 83020

PLY REFER TO:

A2823

September 8, 1964

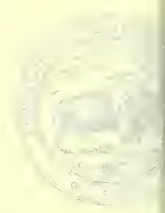
Summary of August 1964 Monthly Narrative Report

GENERAL

Page

<u>Weather.</u>	Summer weather; clear days, cool nights; Temperatures around Park listed. Snow August 18; Beartooth Hwy closed intermittently; <del>boat registration decreased</del>	1
<u>Travel</u>	609,905 visitors, monthly inc. 2.7% over 1963; boat registration decreased	1-2
<u>Range</u>	USFS hopeful to study range-related to aspen	2
<u>Visitors</u>	Mr. Underwood, writer for LIFE Mr. Klotz, NBC, Washington, director of "Beautiful America"	2
<u>Foreign Visitors.</u>	Japanese Park Study Team, July 31-August 2. Japanese Mineral Mining Industry Study Team, 8/2	2/3
	Miss Paparella, Yugoslavia, Aug. 3-4 Mr. Barnabas Sessanga, Uganda, Aug. 5-6 Mr. and Mrs. Fabian Jarrin, Quito, Ecuador, and Mr. REGULO Bala, Philippines, Aug. 16-19	
	Mr. Henry Fosbrooke, Tanganyika, Conservator, 8/18-20 Mr. Khosrow Sariri, Iran, Aug. 20, Wildlife Mr. Bruno Erath, Editor of Alpine Program and Mr. Erwin Rothlauf, writer, Bavarian Radio, Germany, Aug. 21. Touring United States and Canada	
	Mr. Wang Lau, Taiwan, Chinese novelist and painter, in Park Aug. 26 Mr. Walter Leuthold, Switzerland, Aug. 27, discussed wildlife management Dr. Nguyen Quant Trinh, Vietnam, Professor of Physics, Saigon, Aug. 31	2-3-4
	<u>African Students Program.</u> Anthony Antao, John Nguthu, Obasi Onuoha, Joseph Okpahu, arrived August 16 for about two weeks	





UNITED STATES  
DEPARTMENT OF THE INTERIOR  
BUREAU OF LAND MANAGEMENT

Washington, D.C. 20246

September 15, 1964

Mr. J. Edgar Hoover, Federal Bureau of Investigation  
Washington, D.C.

Dear Sir:

Reference is made to your letter of September 10, 1964, regarding the proposed acquisition of certain land in the State of Nevada for the purpose of establishing a new national monument.

The Bureau has reviewed the information submitted to it and has determined that the proposed acquisition is in the public interest.

The Bureau is therefore recommending that the proposed acquisition be approved.

The Bureau is recommending that the proposed acquisition be approved on the basis of the information submitted to it and that the proposed acquisition be approved on the basis of the information submitted to it.

Very truly yours,  
Director, Bureau of Land Management

Enclosed for the Bureau of Land Management are two copies of a letterhead memorandum (LHM) dated and captioned as above, and one copy of a letterhead memorandum (LHM) dated and captioned as above.

- 1. One copy of LHM, dated and captioned as above, to the Bureau of Land Management.
- 2. One copy of LHM, dated and captioned as above, to the Bureau of Land Management.
- 3. One copy of LHM, dated and captioned as above, to the Bureau of Land Management.
- 4. One copy of LHM, dated and captioned as above, to the Bureau of Land Management.

Very truly yours,  
Director, Bureau of Land Management

Enclosed for the Bureau of Land Management are two copies of a letterhead memorandum (LHM) dated and captioned as above, and one copy of a letterhead memorandum (LHM) dated and captioned as above.

Very truly yours,  
Director, Bureau of Land Management

Enclosed for the Bureau of Land Management are two copies of a letterhead memorandum (LHM) dated and captioned as above, and one copy of a letterhead memorandum (LHM) dated and captioned as above.

<u>Special Activities.</u>	Director here Aug. 18-22; Midwest Regional Director here August 18-31	<u>Page</u>
	Meeting on West Yellowstone Airport, Aug. 14 NPS-USFS discuss bridge reconstruction on Beartooth Hwy; Biologists attend bison mgt. meeting Aug. 24-26; Mattison and Mattes, Midwest, discussed historical matters, Aug. 3 & 10	
	Contract to Rogers Engr. for electric power study, August 12; will report in September; Photographer Spring taking pictures for Grant Village exhibits; Dr. and Mrs. Raber, first Millionth Visitor, Sept. 1948, revisited Park with family, Aug. 7;	
	Mo. Basin Field Committee met at C.V., Aug. 19-20, Director attended	
	NPS Master Plan Committee in Yell. Aug. 24-26; NPS Staffing Study Committee in Park, Aug. 26 thru Sept. 4	4-5-6
<u>CIVIL DEFENSE</u>	Meeting to set up civilian training and 2-day school latter part Jan. or Feb.	7
<u>Earthquake</u>	Madison-West Yellowstone, Aug. 18 at 1:50 a.m.	7
	Superintendent's Staff Meetings Aug. 13 and 27	7
<u>ADMINISTRATION</u> <u>Personnel</u>		
<u>Transfers:</u>	<u>Robert O. Binnewies</u> , Park Ranger, GS-7 to GS-9, Dept. Mgr. Training Program, Waso, eff. Aug. 20 <u>Harvey B. Reynolds</u> , Programs, GS-13 to GS-14, Special Asst. to Regional Director (Development) Midwest, eff. Aug. 30	7
<u>Retirements</u>	<u>William A. Olson</u> , painter, retired, August 15 <u>David Harvey Lyons</u> , painter, retired July 1	7-8
<u>Special Assignment</u>	Rangers Thompson and Yestness, Mechanic Abbie, Truck Driver Jump to Flaming Gorge, August 17, dedication ceremonies and transport First Lady, Mrs. Lyndon B. Johnson and Secy of Interior Udall and party in "Meldrum" Photographer Keller in Grand Teton, same mission, Aug. 14-17	8

Division Five, 19-21; Division Six, 22-24

Division Seven, 25-27; Division Eight, 28-30  
Division Nine, 31-33; Division Ten, 34-36  
Division Eleven, 37-39; Division Twelve, 40-42  
Division Thirteen, 43-45; Division Fourteen, 46-48  
Division Fifteen, 49-51; Division Sixteen, 52-54  
Division Seventeen, 55-57; Division Eighteen, 58-60  
Division Nineteen, 61-63; Division Twenty, 64-66  
Division Twenty-One, 67-69; Division Twenty-Two, 70-72  
Division Twenty-Three, 73-75; Division Twenty-Four, 76-78  
Division Twenty-Five, 79-81; Division Twenty-Six, 82-84  
Division Twenty-Seven, 85-87; Division Twenty-Eight, 88-90  
Division Twenty-Nine, 91-93; Division Thirty, 94-96  
Division Thirty-One, 97-99; Division Thirty-Two, 100-102  
Division Thirty-Three, 103-105; Division Thirty-Four, 106-108  
Division Thirty-Five, 109-111; Division Thirty-Six, 112-114  
Division Thirty-Seven, 115-117; Division Thirty-Eight, 118-120  
Division Thirty-Nine, 121-123; Division Forty, 124-126  
Division Forty-One, 127-129; Division Forty-Two, 130-132  
Division Forty-Three, 133-135; Division Forty-Four, 136-138  
Division Forty-Five, 139-141; Division Forty-Six, 142-144  
Division Forty-Seven, 145-147; Division Forty-Eight, 148-150  
Division Forty-Nine, 151-153; Division Fifty, 154-156  
Division Fifty-One, 157-159; Division Fifty-Two, 160-162  
Division Fifty-Three, 163-165; Division Fifty-Four, 166-168  
Division Fifty-Five, 169-171; Division Fifty-Six, 172-174  
Division Fifty-Seven, 175-177; Division Fifty-Eight, 178-180  
Division Fifty-Nine, 181-183; Division Sixty, 184-186  
Division Sixty-One, 187-189; Division Sixty-Two, 190-192  
Division Sixty-Three, 193-195; Division Sixty-Four, 196-198  
Division Sixty-Five, 199-201; Division Sixty-Six, 202-204  
Division Sixty-Seven, 205-207; Division Sixty-Eight, 208-210  
Division Sixty-Nine, 211-213; Division Seventy, 214-216  
Division Seventy-One, 217-219; Division Seventy-Two, 220-222  
Division Seventy-Three, 223-225; Division Seventy-Four, 226-228  
Division Seventy-Five, 229-231; Division Seventy-Six, 232-234  
Division Seventy-Seven, 235-237; Division Seventy-Eight, 238-240  
Division Seventy-Nine, 241-243; Division Eighty, 244-246  
Division Eighty-One, 247-249; Division Eighty-Two, 250-252  
Division Eighty-Three, 253-255; Division Eighty-Four, 256-258  
Division Eighty-Five, 259-261; Division Eighty-Six, 262-264  
Division Eighty-Seven, 265-267; Division Eighty-Eight, 268-270  
Division Eighty-Nine, 271-273; Division Ninety, 274-276  
Division Ninety-One, 277-279; Division Ninety-Two, 280-282  
Division Ninety-Three, 283-285; Division Ninety-Four, 286-288  
Division Ninety-Five, 289-291; Division Ninety-Six, 292-294  
Division Ninety-Seven, 295-297; Division Ninety-Eight, 298-300  
Division Ninety-Nine, 301-303; Division One Hundred, 304-306  
Division One Hundred-One, 307-309; Division One Hundred-Two, 310-312  
Division One Hundred-Three, 313-315; Division One Hundred-Four, 316-318  
Division One Hundred-Five, 319-321; Division One Hundred-Six, 322-324  
Division One Hundred-Seven, 325-327; Division One Hundred-Eight, 328-330  
Division One Hundred-Nine, 331-333; Division One Hundred-Ten, 334-336  
Division One Hundred-Eleven, 337-339; Division One Hundred-Twelve, 340-342  
Division One Hundred-Thirteen, 343-345; Division One Hundred-Fourteen, 346-348  
Division One Hundred-Fifteen, 349-351; Division One Hundred-Sixteen, 352-354  
Division One Hundred-Seventeen, 355-357; Division One Hundred-Eighteen, 358-360  
Division One Hundred-Nineteen, 361-363; Division One Hundred-Twenty, 364-366  
Division One Hundred-Twenty-One, 367-369; Division One Hundred-Twenty-Two, 370-372  
Division One Hundred-Twenty-Three, 373-375; Division One Hundred-Twenty-Four, 376-378  
Division One Hundred-Twenty-Five, 379-381; Division One Hundred-Twenty-Six, 382-384  
Division One Hundred-Twenty-Seven, 385-387; Division One Hundred-Twenty-Eight, 388-390  
Division One Hundred-Twenty-Nine, 391-393; Division One Hundred-Thirty, 394-396  
Division One Hundred-Thirty-One, 397-399; Division One Hundred-Thirty-Two, 400-402  
Division One Hundred-Thirty-Three, 403-405; Division One Hundred-Thirty-Four, 406-408  
Division One Hundred-Thirty-Five, 409-411; Division One Hundred-Thirty-Six, 412-414  
Division One Hundred-Thirty-Seven, 415-417; Division One Hundred-Thirty-Eight, 418-420  
Division One Hundred-Thirty-Nine, 421-423; Division One Hundred-Forty, 424-426  
Division One Hundred-Forty-One, 427-429; Division One Hundred-Forty-Two, 430-432  
Division One Hundred-Forty-Three, 433-435; Division One Hundred-Forty-Four, 436-438  
Division One Hundred-Forty-Five, 439-441; Division One Hundred-Forty-Six, 442-444  
Division One Hundred-Forty-Seven, 445-447; Division One Hundred-Forty-Eight, 448-450  
Division One Hundred-Forty-Nine, 451-453; Division One Hundred-Fifty, 454-456  
Division One Hundred-Fifty-One, 457-459; Division One Hundred-Fifty-Two, 460-462  
Division One Hundred-Fifty-Three, 463-465; Division One Hundred-Fifty-Four, 466-468  
Division One Hundred-Fifty-Five, 469-471; Division One Hundred-Fifty-Six, 472-474  
Division One Hundred-Fifty-Seven, 475-477; Division One Hundred-Fifty-Eight, 478-480  
Division One Hundred-Fifty-Nine, 481-483; Division One Hundred-Sixty, 484-486  
Division One Hundred-Sixty-One, 487-489; Division One Hundred-Sixty-Two, 490-492  
Division One Hundred-Sixty-Three, 493-495; Division One Hundred-Sixty-Four, 496-498  
Division One Hundred-Sixty-Five, 499-501; Division One Hundred-Sixty-Six, 502-504  
Division One Hundred-Sixty-Seven, 505-507; Division One Hundred-Sixty-Eight, 508-510  
Division One Hundred-Sixty-Nine, 511-513; Division One Hundred-Seventy, 514-516  
Division One Hundred-Seventy-One, 517-519; Division One Hundred-Seventy-Two, 520-522  
Division One Hundred-Seventy-Three, 523-525; Division One Hundred-Seventy-Four, 526-528  
Division One Hundred-Seventy-Five, 529-531; Division One Hundred-Seventy-Six, 532-534  
Division One Hundred-Seventy-Seven, 535-537; Division One Hundred-Seventy-Eight, 538-540  
Division One Hundred-Seventy-Nine, 541-543; Division One Hundred-Eighty, 544-546  
Division One Hundred-Eighty-One, 547-549; Division One Hundred-Eighty-Two, 550-552  
Division One Hundred-Eighty-Three, 553-555; Division One Hundred-Eighty-Four, 556-558  
Division One Hundred-Eighty-Five, 559-561; Division One Hundred-Eighty-Six, 562-564  
Division One Hundred-Eighty-Seven, 565-567; Division One Hundred-Eighty-Eight, 568-570  
Division One Hundred-Eighty-Nine, 571-573; Division One Hundred-Ninety, 574-576  
Division One Hundred-Ninety-One, 577-579; Division One Hundred-Ninety-Two, 580-582  
Division One Hundred-Ninety-Three, 583-585; Division One Hundred-Ninety-Four, 586-588  
Division One Hundred-Ninety-Five, 589-591; Division One Hundred-Ninety-Six, 592-594  
Division One Hundred-Ninety-Seven, 595-597; Division One Hundred-Ninety-Eight, 598-600  
Division One Hundred-Ninety-Nine, 601-603; Division Two Hundred, 604-606  
Division Two Hundred-One, 607-609; Division Two Hundred-Two, 610-612  
Division Two Hundred-Three, 613-615; Division Two Hundred-Four, 616-618  
Division Two Hundred-Five, 619-621; Division Two Hundred-Six, 622-624  
Division Two Hundred-Seven, 625-627; Division Two Hundred-Eight, 628-630  
Division Two Hundred-Nine, 631-633; Division Two Hundred-Ten, 634-636  
Division Two Hundred-Eleven, 637-639; Division Two Hundred-Twelve, 640-642  
Division Two Hundred-Thirteen, 643-645; Division Two Hundred-Fourteen, 646-648  
Division Two Hundred-Fifteen, 649-651; Division Two Hundred-Sixteen, 652-654  
Division Two Hundred-Seventeen, 655-657; Division Two Hundred-Eighteen, 658-660  
Division Two Hundred-Nineteen, 661-663; Division Two Hundred-Twenty, 664-666  
Division Two Hundred-Twenty-One, 667-669; Division Two Hundred-Twenty-Two, 670-672  
Division Two Hundred-Twenty-Three, 673-675; Division Two Hundred-Twenty-Four, 676-678  
Division Two Hundred-Twenty-Five, 679-681; Division Two Hundred-Twenty-Six, 682-684  
Division Two Hundred-Twenty-Seven, 685-687; Division Two Hundred-Twenty-Eight, 688-690  
Division Two Hundred-Twenty-Nine, 691-693; Division Two Hundred-Thirty, 694-696  
Division Two Hundred-Thirty-One, 697-699; Division Two Hundred-Thirty-Two, 700-702  
Division Two Hundred-Thirty-Three, 703-705; Division Two Hundred-Thirty-Four, 706-708  
Division Two Hundred-Thirty-Five, 709-711; Division Two Hundred-Thirty-Six, 712-714  
Division Two Hundred-Thirty-Seven, 715-717; Division Two Hundred-Thirty-Eight, 718-720  
Division Two Hundred-Thirty-Nine, 721-723; Division Two Hundred-Forty, 724-726  
Division Two Hundred-Forty-One, 727-729; Division Two Hundred-Forty-Two, 730-732  
Division Two Hundred-Forty-Three, 733-735; Division Two Hundred-Forty-Four, 736-738  
Division Two Hundred-Forty-Five, 739-741; Division Two Hundred-Forty-Six, 742-744  
Division Two Hundred-Forty-Seven, 745-747; Division Two Hundred-Forty-Eight, 748-750  
Division Two Hundred-Forty-Nine, 751-753; Division Two Hundred-Fifty, 754-756  
Division Two Hundred-Fifty-One, 757-759; Division Two Hundred-Fifty-Two, 760-762  
Division Two Hundred-Fifty-Three, 763-765; Division Two Hundred-Fifty-Four, 766-768  
Division Two Hundred-Fifty-Five, 769-771; Division Two Hundred-Fifty-Six, 772-774  
Division Two Hundred-Fifty-Seven, 775-777; Division Two Hundred-Fifty-Eight, 778-780  
Division Two Hundred-Fifty-Nine, 781-783; Division Two Hundred-Sixty, 784-786  
Division Two Hundred-Sixty-One, 787-789; Division Two Hundred-Sixty-Two, 790-792  
Division Two Hundred-Sixty-Three, 793-795; Division Two Hundred-Sixty-Four, 796-798  
Division Two Hundred-Sixty-Five, 799-801; Division Two Hundred-Sixty-Six, 802-804  
Division Two Hundred-Sixty-Seven, 805-807; Division Two Hundred-Sixty-Eight, 808-810  
Division Two Hundred-Sixty-Nine, 811-813; Division Two Hundred-Seventy, 814-816  
Division Two Hundred-Seventy-One, 817-819; Division Two Hundred-Seventy-Two, 820-822  
Division Two Hundred-Seventy-Three, 823-825; Division Two Hundred-Seventy-Four, 826-828  
Division Two Hundred-Seventy-Five, 829-831; Division Two Hundred-Seventy-Six, 832-834  
Division Two Hundred-Seventy-Seven, 835-837; Division Two Hundred-Seventy-Eight, 838-840  
Division Two Hundred-Seventy-Nine, 841-843; Division Two Hundred-Eighty, 844-846  
Division Two Hundred-Eighty-One, 847-849; Division Two Hundred-Eighty-Two, 850-852  
Division Two Hundred-Eighty-Three, 853-855; Division Two Hundred-Eighty-Four, 856-858  
Division Two Hundred-Eighty-Five, 859-861; Division Two Hundred-Eighty-Six, 862-864  
Division Two Hundred-Eighty-Seven, 865-867; Division Two Hundred-Eighty-Eight, 868-870  
Division Two Hundred-Eighty-Nine, 871-873; Division Two Hundred-Ninety, 874-876  
Division Two Hundred-Ninety-One, 877-879; Division Two Hundred-Ninety-Two, 880-882  
Division Two Hundred-Ninety-Three, 883-885; Division Two Hundred-Ninety-Four, 886-888  
Division Two Hundred-Ninety-Five, 889-891; Division Two Hundred-Ninety-Six, 892-894  
Division Two Hundred-Ninety-Seven, 895-897; Division Two Hundred-Ninety-Eight, 898-900  
Division Two Hundred-Ninety-Nine, 901-903; Division Three Hundred, 904-906  
Division Three Hundred-One, 907-909; Division Three Hundred-Two, 910-912  
Division Three Hundred-Three, 913-915; Division Three Hundred-Four, 916-918  
Division Three Hundred-Five, 919-921; Division Three Hundred-Six, 922-924  
Division Three Hundred-Seven, 925-927; Division Three Hundred-Eight, 928-930  
Division Three Hundred-Nine, 931-933; Division Three Hundred-Ten, 934-936  
Division Three Hundred-Eleven, 937-939; Division Three Hundred-Twelve, 940-942  
Division Three Hundred-Thirteen, 943-945; Division Three Hundred-Fourteen, 946-948  
Division Three Hundred-Fifteen, 949-951; Division Three Hundred-Sixteen, 952-954  
Division Three Hundred-Seventeen, 955-957; Division Three Hundred-Eighteen, 958-960  
Division Three Hundred-Nineteen, 961-963; Division Three Hundred-Twenty, 964-966  
Division Three Hundred-Twenty-One, 967-969; Division Three Hundred-Twenty-Two, 970-972  
Division Three Hundred-Twenty-Three, 973-975; Division Three Hundred-Twenty-Four, 976-978  
Division Three Hundred-Twenty-Five, 979-981; Division Three Hundred-Twenty-Six, 982-984  
Division Three Hundred-Twenty-Seven, 985-987; Division Three Hundred-Twenty-Eight, 988-990  
Division Three Hundred-Twenty-Nine, 991-993; Division Three Hundred-Thirty, 994-996  
Division Three Hundred-Thirty-One, 997-999; Division Three Hundred-Thirty-Two, 1000-1002  
Division Three Hundred-Thirty-Three, 1003-1005; Division Three Hundred-Thirty-Four, 1006-1008  
Division Three Hundred-Thirty-Five, 1009-1011; Division Three Hundred-Thirty-Six, 1012-1014  
Division Three Hundred-Thirty-Seven, 1015-1017; Division Three Hundred-Thirty-Eight, 1018-1020  
Division Three Hundred-Thirty-Nine, 1021-1023; Division Three Hundred-Forty, 1024-1026  
Division Three Hundred-Forty-One, 1027-1029; Division Three Hundred-Forty-Two, 1030-1032  
Division Three Hundred-Forty-Three, 1033-1035; Division Three Hundred-Forty-Four, 1036-1038  
Division Three Hundred-Forty-Five, 1039-1041; Division Three Hundred-Forty-Six, 1042-1044  
Division Three Hundred-Forty-Seven, 1045-1047; Division Three Hundred-Forty-Eight, 1048-1050  
Division Three Hundred-Forty-Nine, 1051-1053; Division Three Hundred-Fifty, 1054-1056  
Division Three Hundred-Fifty-One, 1057-1059; Division Three Hundred-Fifty-Two, 1060-1062  
Division Three Hundred-Fifty-Three, 1063-1065; Division Three Hundred-Fifty-Four, 1066-1068  
Division Three Hundred-Fifty-Five, 1069-1071; Division Three Hundred-Fifty-Six, 1072-1074  
Division Three Hundred-Fifty-Seven, 1075-1077; Division Three Hundred-Fifty-Eight, 1078-1080  
Division Three Hundred-Fifty-Nine, 1081-1083; Division Three Hundred-Sixty, 1084-1086  
Division Three Hundred-Sixty-One, 1087-1089; Division Three Hundred-Sixty-Two, 1090-1092  
Division Three Hundred-Sixty-Three, 1093-1095; Division Three Hundred-Sixty-Four, 1096-1098  
Division Three Hundred-Sixty-Five, 1099-1101; Division Three Hundred-Sixty-Six, 1102-1104  
Division Three Hundred-Sixty-Seven, 1105-1107; Division Three Hundred-Sixty-Eight, 1108-1110  
Division Three Hundred-Sixty-Nine, 1111-1113; Division Three Hundred-Seventy, 1114-1116  
Division Three Hundred-Seventy-One, 1117-1119; Division Three Hundred-Seventy-Two, 1120-1122  
Division Three Hundred-Seventy-Three, 1123-1125; Division Three Hundred-Seventy-Four, 1126-1128  
Division Three Hundred-Seventy-Five, 1129-1131; Division Three Hundred-Seventy-Six, 1132-1134  
Division Three Hundred-Seventy-Seven, 1135-1137; Division Three Hundred-Seventy-Eight, 1138-1140  
Division Three Hundred-Seventy-Nine, 1141-1143; Division Three Hundred-Eighty, 1144-1146  
Division Three Hundred-Eighty-One, 1147-1149; Division Three Hundred-Eighty-Two, 1150-1152  
Division Three Hundred-Eighty-Three, 1153-1155; Division Three Hundred-Eighty-Four, 1156-1158  
Division Three Hundred-Eighty-Five, 1159-1161; Division Three Hundred-Eighty-Six, 1162-1164  
Division Three Hundred-Eighty-Seven, 1165-1167; Division Three Hundred-Eighty-Eight, 1168-1170  
Division Three Hundred-Eighty-Nine, 1171-1173; Division Three Hundred-Ninety, 1174-1176  
Division Three Hundred-Ninety-One, 1177-1179; Division Three Hundred-Ninety-Two, 1180-1182  
Division Three Hundred-Ninety-Three, 1183-1185; Division Three Hundred-Ninety-Four, 1186-1188  
Division Three Hundred-Ninety-Five, 1189-1191; Division Three Hundred-Ninety-Six, 1192-1194  
Division Three Hundred-Ninety-Seven, 1195-1197; Division Three Hundred-Ninety-Eight, 1198-1200  
Division Three Hundred-Ninety-Nine, 1201-1203; Division Four Hundred, 1204-1206  
Division Four Hundred-One, 1207-1209; Division Four Hundred-Two, 1210-1212  
Division Four Hundred-Three, 1213-1215; Division Four Hundred-Four, 1216-1218  
Division Four Hundred-Five, 1219-1221; Division Four Hundred-Six, 1222-1224  
Division Four Hundred-Seven, 1225-1227; Division Four Hundred-Eight, 1228-1230  
Division Four Hundred-Nine, 1231-1233; Division Four Hundred-Ten, 1234-1236  
Division Four Hundred-Eleven, 1237-1239; Division Four Hundred-Twelve, 1240-1242  
Division Four Hundred-Thirteen, 1243-1245; Division Four Hundred-Fourteen, 1246-1248  
Division Four Hundred-Fifteen, 1249-1251; Division Four Hundred-Sixteen, 1252-1254  
Division Four Hundred-Seventeen, 1255-1257; Division Four Hundred-Eighteen, 1258-1260  
Division Four Hundred-Nineteen, 1261-1263; Division Four Hundred-Twenty, 1264-1266  
Division Four Hundred-Twenty-One, 1267-1269; Division Four Hundred-Twenty-Two, 1270-1272  
Division Four Hundred-Twenty-Three, 1273-1275; Division Four Hundred-Twenty-Four, 1276-1278  
Division Four Hundred-Twenty-Five, 1279-1281; Division Four Hundred-Twenty-Six, 1282-1284  
Division Four Hundred-Twenty-Seven, 1285-1287; Division Four Hundred-Twenty-Eight, 1288-1290  
Division Four Hundred-Twenty-Nine, 1291-1293; Division Four Hundred-Thirty, 1294-1296  
Division Four Hundred-Thirty-One, 1297-1299; Division Four Hundred-Thirty-Two, 1300-1302  
Division Four Hundred-Thirty-Three, 1303-1305; Division Four Hundred-Thirty-Four, 1306-1308  
Division Four Hundred-Thirty-Five, 1309-1311; Division Four Hundred-Thirty-Six, 1312-1314  
Division Four Hundred-Thirty-Seven, 1315-1317; Division Four Hundred-Thirty-Eight, 1318-1320  
Division Four Hundred-Thirty-Nine, 1321-1323; Division Four Hundred-Forty, 1324-1326  
Division Four Hundred-Forty-One, 1327-1329; Division Four Hundred-Forty-Two, 1330-1332  
Division Four Hundred-Forty-Three, 1333-1335; Division Four Hundred-Forty-Four, 1336-1338  
Division Four Hundred-Forty-Five, 1339-1341; Division Four Hundred-Forty-Six, 1342-1344  
Division Four Hundred-Forty-Seven, 1345-1347; Division Four Hundred-Forty-Eight, 1348-1350  
Division Four Hundred-Forty-Nine, 1351-1353; Division Four Hundred-Fifty, 1354-1356  
Division Four Hundred-Fifty-One, 1357-1359; Division Four Hundred-Fifty-Two, 1360-1362  
Division Four Hundred-Fifty-Three, 1363-1365; Division Four Hundred-Fifty-Four, 1366-1368  
Division Four Hundred-Fifty-Five, 1369-1371; Division Four Hundred-Fifty-Six, 1372-1374  
Division Four Hundred-Fifty-Seven, 1375-1377; Division Four Hundred-Fifty-Eight, 1378-1380  
Division Four Hundred-Fifty-Nine, 1381-1383; Division Four Hundred-Sixty, 1384-1386  
Division Four Hundred-Sixty-One, 1387-1389; Division Four Hundred-Sixty-Two, 1390-1392  
Division Four Hundred-Sixty-Three, 1393-1395; Division Four Hundred-Sixty-Four, 1396-1398  
Division Four Hundred-Sixty-Five, 1399-1401; Division Four Hundred-Sixty-Six, 1402-1404  
Division Four Hundred-Sixty-Seven, 1405-1407; Division Four Hundred-Sixty-Eight, 1408-1410  
Division Four Hundred-Sixty-Nine, 1411-1413; Division Four Hundred-Seventy, 1414-1416  
Division Four Hundred-Seventy-One, 1417-1419; Division Four Hundred-Seventy-Two, 1420-1422  
Division Four Hundred-Seventy-Three, 1423-1425; Division Four Hundred-Seventy-Four, 1426-1428  
Division Four Hundred-Seventy-Five, 1429-1431; Division Four Hundred-Seventy-Six, 1432-1434  
Division Four Hundred-Seventy-Seven, 1435-1437; Division Four Hundred-Seventy-Eight, 1438-1440  
Division Four Hundred-Seventy-Nine, 1441-1443; Division Four Hundred-Eighty, 1444-1446  
Division Four Hundred-Eighty-One, 1447-1449; Division Four Hundred-Eighty-Two, 1450-1452  
Division Four Hundred-Eighty-Three, 1453-1455; Division Four Hundred-Eighty-Four, 1456-1458  
Division Four Hundred-Eighty-Five, 1459-1461; Division Four Hundred-Eighty-Six, 1462-1464  
Division Four Hundred-Eighty-Seven, 1465-1467; Division Four Hundred-Eighty-Eight, 1468-1470  
Division Four Hundred-Eighty-Nine, 1471-1473; Division Four Hundred-Ninety, 1474-1476  
Division Four Hundred-Ninety-One, 1477-1479; Division Four Hundred-Ninety-Two, 1480-1482  
Division Four Hundred-Ninety-Three, 1483-1485; Division Four Hundred-Ninety-Four, 1486-1488  
Division Four Hundred-Ninety-Five, 1489-1491; Division Four Hundred-Ninety-Six, 1492-1494  
Division Four Hundred-Ninety-Seven, 1495-1497; Division Four Hundred-Ninety-Eight, 1498-1500  
Division Four Hundred-Ninety-Nine, 1501-1503; Division Five Hundred, 1504-1506  
Division Five Hundred-One, 1507-1509; Division Five Hundred-Two, 1510-1512  
Division Five Hundred-Three, 1513-1515; Division Five Hundred-Four, 1516-1518  
Division Five Hundred-Five, 1519-1521; Division Five Hundred-Six, 1522-1524  
Division Five Hundred-Seven, 1525-1527; Division Five Hundred-Eight, 1528-1530  
Division Five Hundred-Nine, 1531-1533; Division Five Hundred-Ten, 1534-1536  
Division Five Hundred-Eleven, 1537-1539; Division Five Hundred-Twelve, 1540-1542  
Division Five Hundred-Thirteen, 1543-1545; Division Five Hundred-Fourteen, 1546-1548  
Division Five Hundred-Fifteen, 1549-1551; Division Five Hundred-Sixteen, 1552-1554  
Division Five Hundred-Seventeen, 1555-1557; Division Five Hundred-Eighteen, 1558-1560  
Division Five Hundred-Nineteen, 1561-1563; Division Five Hundred-Twenty, 1564-1566  
Division Five Hundred-Twenty-One, 1567-1569; Division Five Hundred-Twenty-Two, 1570-1572  
Division Five Hundred-Twenty-Three, 1573-1575; Division Five Hundred-Twenty-Four, 1576-1578  
Division Five Hundred-Twenty-Five, 1579-1581; Division Five Hundred-Twenty-Six, 1582-1584  
Division Five Hundred-Twenty-Seven, 1585-1587; Division Five Hundred-Twenty-Eight, 1588-1590  
Division Five Hundred-Twenty-Nine, 1591-1593; Division Five Hundred-Thirty, 1594-1596  
Division Five Hundred-Thirty-One, 1597-1599; Division Five Hundred-Thirty-Two, 1600-1602  
Division Five Hundred-Thirty-Three, 1603-1605; Division Five Hundred-Thirty-Four, 1606-1608  
Division Five Hundred-Thirty-Five, 1609-1611; Division Five Hundred-Thirty-Six, 1612-1614  
Division Five Hundred-Thirty-Seven, 1615-1617; Division Five Hundred-Thirty-Eight, 1618-1620  
Division Five Hundred-Thirty-Nine, 1621-1623; Division Five Hundred-Forty, 1624-1626  
Division Five Hundred-Forty-One, 1627-1629; Division Five Hundred-Forty-Two, 1630-1632  
Division Five Hundred-Forty-Three, 1633-1635; Division Five Hundred-Forty-Four, 1636-1638  
Division Five Hundred-Forty-Five, 1639-1641; Division Five Hundred-Forty-Six, 1642-1644  
Division Five Hundred-Forty-Seven, 1645-1647; Division Five Hundred-Forty-Eight, 1648-1650  
Division Five Hundred-Forty-Nine, 1651-1653; Division Five Hundred-Fifty, 1654-1656  
Division Five Hundred-Fifty-One, 1657-1659; Division Five Hundred-Fifty-Two, 1660-1662  
Division Five Hundred-Fifty-Three, 1663-1665; Division Five Hundred-Fifty-Four, 1666-1668  
Division Five Hundred-Fifty-Five, 1669-1671; Division Five Hundred-Fifty-Six, 1672-1674  
Division Five Hundred-Fifty-Seven, 1675-1677; Division Five Hundred-Fifty-Eight, 1678-1680  
Division Five Hundred-Fifty-Nine, 1681-1683; Division Five Hundred-Sixty, 1684-1686  
Division Five Hundred-Sixty-One, 1687-1689; Division Five Hundred-Sixty-Two, 1690-1692  
Division Five Hundred-Sixty-Three, 1693-1695; Division Five Hundred-Sixty-Four, 1696-1698  
Division Five Hundred-Sixty-Five, 1699-1701; Division Five Hundred-Sixty-Six, 1702-1704  
Division Five Hundred-Sixty-Seven, 1705-1707; Division Five Hundred-Sixty-Eight, 1708-1710  
Division Five Hundred-Sixty-Nine, 1711-1713; Division Five Hundred-Seventy, 1714-1716  
Division Five Hundred-Seventy-One, 1717-1719; Division Five Hundred-Seventy-Two, 1720-1722  
Division Five Hundred-Seventy-Three, 1723-1725; Division Five Hundred-Seventy-Four, 1726-1728  
Division Five Hundred-Seventy-Five, 1729-1731; Division Five Hundred-Seventy-Six, 1732-1734  
Division Five Hundred-Seventy-Seven, 1735-1737; Division Five Hundred-Seventy-Eight, 1738-1740  
Division Five Hundred-Seventy-Nine, 1741-1743; Division Five Hundred-Eighty, 1744-1746  
Division Five Hundred-Eighty-One, 1747-1749; Division Five Hundred-Eighty-Two, 1750-1752  
Division Five Hundred-Eighty-Three, 1753-1755; Division Five Hundred-Eighty-Four, 1756-1758  
Division Five Hundred-Eighty-Five, 1759-1761; Division Five Hundred-Eighty-Six, 1762-1764  
Division Five Hundred-Eighty-Seven, 1765-1767; Division Five Hundred-Eighty-Eight, 1768-1770  
Division Five Hundred-Eighty-Nine, 1771-1773; Division Five Hundred-Ninety, 1774-1776  
Division Five Hundred-Ninety-One, 1777-1779; Division Five Hundred-Ninety-Two, 1780-1782  
Division Five Hundred-Ninety-Three, 1783-1785; Division Five Hundred-Ninety-Four, 1786-1788  
Division Five Hundred-Ninety-Five, 1789-1791; Division Five Hundred-Ninety-Six, 1792-1794  
Division Five Hundred-Ninety-Seven, 1795-1797; Division Five Hundred-Ninety-Eight, 1798-1800  
Division Five Hundred-Ninety-Nine, 1801-1803; Division Six Hundred, 1804-1806  
Division Six Hundred-One, 1807-1809; Division Six Hundred-Two, 1810-1812  
Division Six Hundred-Three, 1813-1815; Division Six Hundred-Four, 1816-1818  
Division Six Hundred-Five, 1819-1821; Division Six Hundred-Six, 1822-1824  
Division Six Hundred-Seven, 1825-1827; Division Six Hundred-Eight, 1828-1830  
Division Six Hundred-Nine, 1831-1833; Division Six Hundred-Ten, 1834-1836  
Division Six Hundred-Eleven, 1837-1839; Division Six Hundred-Twelve, 1840-1842  
Division Six Hundred-Thirteen, 1843-1845; Division Six Hundred-Fourteen, 1846-1848  
Division Six Hundred-Fifteen, 1849-1851; Division Six Hundred-Sixteen, 1852-1854  
Division Six Hundred-Seventeen, 1855-1857; Division Six Hundred-Eighteen, 1858-1860  
Division Six Hundred-Nineteen, 1861-1863; Division Six Hundred-Twenty, 1864-1866  
Division Six Hundred-Twenty-One, 1867-1869; Division Six Hundred-Twenty-Two, 1870-1872  
Division Six Hundred-Twenty-Three, 1873-1875; Division Six Hundred-Twenty-Four, 1876-1878  
Division Six Hundred-Twenty-Five, 1879-1881; Division Six Hundred-Twenty-Six, 1882-1884  
Division Six Hundred-Twenty-Seven, 1885-1887; Division Six Hundred-Twenty-Eight, 1888-1890  
Division Six Hundred-Twenty-Nine, 1891-1893; Division Six Hundred-Thirty, 1894-1896  
Division Six Hundred-Thirty-One, 1897-1899; Division Six Hundred-Thirty-Two, 1900-1902  
Division Six Hundred-Thirty-Three, 1903-1905; Division Six Hundred-Thirty-Four, 1906-1908  
Division Six Hundred-Thirty-Five, 1909-1911; Division Six Hundred-Thirty-Six, 1912-1914  
Division Six Hundred-Thirty-Seven, 1915-1917; Division Six Hundred-Thirty-Eight, 1918-1920  
Division Six Hundred-Thirty-Nine, 1921-1923; Division Six Hundred-Forty, 1924-1926  
Division Six Hundred-Forty-One, 1927-1929; Division Six Hundred-Forty-Two, 1930-1932  
Division Six Hundred-Forty-Three, 1933-1935; Division Six Hundred-Forty-Four, 1936-1938  
Division Six Hundred-Forty-Five, 1939-1941; Division Six Hundred-Forty-Six, 1942-1944  
Division Six Hundred-Forty-Seven, 1945-1947; Division Six Hundred-Forty-Eight, 1948-1950  
Division Six Hundred-Forty-Nine, 1951-1953; Division Six Hundred-Fifty, 1954-1956  
Division Six Hundred-Fifty-One, 1957-1959; Division Six Hundred-Fifty-Two, 1960-1962  
Division Six Hundred-Fifty-Three, 1963-1965; Division Six Hundred-Fifty-Four, 1966-1968  
Division Six Hundred-Fifty-Five, 1969-1971; Division Six Hundred-Fifty-Six, 1972-1974  
Division Six Hundred-Fifty-Seven, 1975-1977; Division Six Hundred-Fifty-Eight, 1978-1980  
Division Six Hundred-Fifty-Nine, 1981-1983; Division Six Hundred-Sixty, 1984-1986  
Division Six Hundred-Sixty-One, 1987-1989; Division Six Hundred-Sixty-Two, 1990-1992  
Division Six Hundred-Sixty-Three, 1993-1995; Division Six Hundred-Sixty-Four, 1996-1998  
Division Six Hundred-Sixty-Five, 1999-2001; Division Six Hundred-Sixty-Six, 2002-2004  
Division Six Hundred-Sixty-Seven, 2005-2007; Division Six Hundred-Sixty-Eight, 2008-2010  
Division Six Hundred-Sixty-Nine, 2011-2013; Division Six Hundred-Seventy, 2014-2016  
Division Six Hundred-Seventy-One, 2017-2019; Division Six Hundred-Seventy-Two, 2020-2022  
Division Six Hundred-Seventy-Three, 2023-2025; Division Six Hundred-Seventy-Four, 2026-2028  
Division Six Hundred-Seventy-Five, 2029-2031; Division Six Hundred-Seventy-Six, 2032-2034  
Division Six Hundred-Seventy-Seven, 2035-2037; Division Six Hundred-Seventy-Eight, 2038-2040  
Division Six Hundred-Seventy-Nine, 2041-2043; Division Six Hundred-Eighty, 2044-2046  
Division Six Hundred-Eighty-One, 2047-2049; Division Six Hundred-Eighty-Two, 2050-2052  
Division Six Hundred-Eighty-Three, 2053-2055; Division Six Hundred-Eighty-Four, 2056-2058  
Division Six Hundred-Eighty-Five, 2059-2061; Division Six Hundred-Eighty-Six, 2062-2



<u>Birth</u>	Daughter to Mr. and Mrs. Williams, YPCo.	8
<u>Deaths</u>	Mr. E. L. Hamilton, Mammoth Hotel, 8/2. A visitor. Mr. Herbert Ziebart, Sr., Cub Creek Curve, Aug. 6. NPS employee Mr. Glen Cushman, Yankee Jim Canyon, 8/9. A visitor. Mr. Rolla E. Ford, Lake Hospital, 8/11. A visitor. Mr. Steven Robert Bailey, fall into Canyon, Aug. 14. A visitor. Mr. Joseph K. Ladd, father of Ranger Benj. Ladd, Aug. 18 in Ipova, Illinois	8-9
<u>Miscellaneous</u>	Nat'l Rep. of NFFE, Wm. Clavier, Portland, visited Park and talked to employees; William A. Olson Coffees: D. Harvey Lyons Harvey and Lois Reynolds Robert and Midge Binnewies Mr. Kimberlin, former YNP employee in Billings hospital; Miss Jean Reynolds, to Camp Woodhaven, Calif. (Girl Scouts) 2½ weeks	9
<u>Mammoth School</u>	School convened Aug. 31. Teachers listed	9

CONSERVATION, INTERPRETATION AND USE

<u>Interpretive Services</u>	Seven activities terminated in North District; Ten activities terminated in South District;	9-10
<u>History</u>	Map Eagle Creek prehistoric Indian site prepared; Placer mines mapped, photographs borrowed and copies from Hall family	10
<u>YLMA</u>	New trend - larger and more expensive books sold; "Studies of Geysers & Hot Springs Along the Fire- hole" by Marler went on sale	10
<u>Research and Observation</u>	STEAMBOAT GEYSER. More active and more regular; 12 eruptions during month. Known Major Eruptions of Steamboat  OLD FAITHFUL GEYSER. Minimum and maximum intervals broken. Shortest 31 minutes, longest 96 minutes; average 67.6 minutes  NORRIS GEYSER BASIN hotter (189.4 degrees) than any time in recorded past	10-11-12

Digitized by the Internet Archive  
in 2013



	SUNDAY GEYSER in Norris Geyser Basin, "born" July 12; a geyser of considerable interest, started shooting 15-20 feet; Aug. 21 began erupting 25-30 feet every 12-15 minutes. At conclusion of eruption, vent roars about 3 min.	<u>Page</u> 12
<u>Audiovisual</u>	Projection and control equipment installed in Canyon Visitor Center	12
<u>Sanitation</u>	Weekly inspection of food establishments by NPS sanitarian; also by USPHS	12
<u>Health</u>	75 water samples collected for analysis	13
<u>Law Enforcement</u>	211 law enforcement incidents during month; 505 for year to date. This exceeds previous reported incidents 142 bonds posted; 17 forfeited for bear feeding	13
<u>Ranger Activities</u>	Patrol cars used as ambulances; Change of entrance station scheduled hours; Cash registers at entrance stations functioning well	13
<u>CONCESSIONERS</u>	Yellowstone Park Company will move to Billings for winter, effective October 1  Yellowstone Park Co. closed Mammoth Cottages, Mammoth Hotel Dining Room, Roosevelt Lodge, food and stage coach, August 29; Bus tour services on limited basis after August 29; Canyon Campers Cabins closed August 30 Stevenson Island Fish Fry not activated this year on account of high water in Lake  Haynes Inc. closed facilities at Lake Lodge Shop, Aug. 24; and Roosevelt Lodge Store-Shop, Aug. 29  Hamilton Stores, Inc. closed Lake Lodge Curio Shop, Aug. 24  YPSS closed Tower Junction Service Station, Aug. 29  NPS-Concessioner meeting postponed to Sept. 4  Three NPS interpretive services concluded in Tower Fall area; and four in Mammoth Area	13-14

[illegible]

© 2000 Blackwell Science Ltd *Journal of Internal Medicine* 247: 395–402

ALL INFORMATION CONTAINED HEREIN IS UNCLASSIFIED  
DATE 08-11-2010 BY 60322 UCBAW

12. When samples contained the following

*(The following information was obtained from the records of the Department of Social Services, State of New York.)*

1993, 1994, 1995, 1996, 1997, 1998, 1999, 2000, 2001, 2002, 2003, 2004, 2005, 2006, 2007, 2008, 2009, 2010, 2011, 2012, 2013, 2014, 2015, 2016, 2017, 2018, 2019, 2020, 2021, 2022, 2023, 2024, 2025, 2026, 2027, 2028, 2029, 2030, 2031, 2032, 2033, 2034, 2035, 2036, 2037, 2038, 2039, 2040, 2041, 2042, 2043, 2044, 2045, 2046, 2047, 2048, 2049, 2050, 2051, 2052, 2053, 2054, 2055, 2056, 2057, 2058, 2059, 2060, 2061, 2062, 2063, 2064, 2065, 2066, 2067, 2068, 2069, 2070, 2071, 2072, 2073, 2074, 2075, 2076, 2077, 2078, 2079, 2080, 2081, 2082, 2083, 2084, 2085, 2086, 2087, 2088, 2089, 2090, 2091, 2092, 2093, 2094, 2095, 2096, 2097, 2098, 2099, 2100, 2101, 2102, 2103, 2104, 2105, 2106, 2107, 2108, 2109, 2110, 2111, 2112, 2113, 2114, 2115, 2116, 2117, 2118, 2119, 2120, 2121, 2122, 2123, 2124, 2125, 2126, 2127, 2128, 2129, 2130, 2131, 2132, 2133, 2134, 2135, 2136, 2137, 2138, 2139, 2140, 2141, 2142, 2143, 2144, 2145, 2146, 2147, 2148, 2149, 2150, 2151, 2152, 2153, 2154, 2155, 2156, 2157, 2158, 2159, 2160, 2161, 2162, 2163, 2164, 2165, 2166, 2167, 2168, 2169, 2170, 2171, 2172, 2173, 2174, 2175, 2176, 2177, 2178, 2179, 2180, 2181, 2182, 2183, 2184, 2185, 2186, 2187, 2188, 2189, 2190, 2191, 2192, 2193, 2194, 2195, 2196, 2197, 2198, 2199, 2200, 2201, 2202, 2203, 2204, 2205, 2206, 2207, 2208, 2209, 2210, 2211, 2212, 2213, 2214, 2215, 2216, 2217, 2218, 2219, 2220, 2221, 2222, 2223, 2224, 2225, 2226, 2227, 2228, 2229, 2230, 2231, 2232, 2233, 2234, 2235, 2236, 2237, 2238, 2239, 2240, 2241, 2242, 2243, 2244, 2245, 2246, 2247, 2248, 2249, 2250, 2251, 2252, 2253, 2254, 2255, 2256, 2257, 2258, 2259, 2260, 2261, 2262, 2263, 2264, 2265, 2266, 2267, 2268, 2269, 2270, 2271, 2272, 2273, 2274, 2275, 2276, 2277, 2278, 2279, 2280, 2281, 2282, 2283, 2284, 2285, 2286, 2287, 2288, 2289, 2290, 2291, 2292, 2293, 2294, 2295, 2296, 2297, 2298, 2299, 2300, 2301, 2302, 2303, 2304, 2305, 2306, 2307, 2308, 2309, 2310, 2311, 2312, 2313, 2314, 2315, 2316, 2317, 2318, 2319, 2320, 2321, 2322, 2323, 2324, 2325, 2326, 2327, 2328, 2329, 2330, 2331, 2332, 2333, 2334, 2335, 2336, 2337, 2338, 2339, 2340, 2341, 2342, 2343, 2344, 2345, 2346, 2347, 2348, 2349, 2350, 2351, 2352, 2353, 2354, 2355, 2356, 2357, 2358, 2359, 2360, 2361, 2362, 2363, 2364, 2365, 2366, 2367, 2368, 2369, 2370, 2371, 2372, 2373, 2374, 2375, 2376, 2377, 2378, 2379, 2380, 2381, 2382, 2383, 2384, 2385, 2386, 2387, 2388, 2389, 2390, 2391, 2392, 2393, 2394, 2395, 2396, 2397, 2398, 2399, 2400, 2401, 2402, 2403, 2404, 2405, 2406, 2407, 2408, 2409, 2410, 2411, 2412, 2413, 2414, 2415, 2416, 2417, 2418, 2419, 2420, 2421, 2422, 2423, 2424, 2425, 2426, 2427, 2428, 2429, 2430, 2431, 2432, 2433, 2434, 2435, 2436, 2437, 2438, 2439, 2440, 2441, 2442, 2443, 2444, 2445, 2446, 2447, 2448, 2449, 2450, 2451, 2452, 2453, 2454, 2455, 2456, 2457, 2458, 2459, 2460, 2461, 2462, 2463, 2464, 2465, 2466, 2467, 2468, 2469, 2470, 2471, 2472, 2473, 2474, 2475, 2476, 2477, 2478, 2479, 2480, 2481, 2482, 2483, 2484, 2485, 2486, 2487, 2488, 2489, 2490, 2491, 2492, 2493, 2494, 2495, 2496, 2497, 2498, 2499, 2500, 2501, 2502, 2503, 2504, 2505, 2506, 2507, 2508, 2509, 2510, 2511, 2512, 2513, 2514, 2515, 2516, 2517, 2518, 2519, 2520, 2521, 2522, 2523, 2524, 2525, 2526, 2527, 2528, 2529, 2530, 2531, 2532, 2533, 2534, 2535, 2536, 2537, 2538, 2539, 2540, 2541, 2542, 2543, 2544, 2545, 2546, 2547, 2548, 2549, 2550, 2551, 2552, 2553, 2554, 2555, 2556, 2557, 2558, 2559, 2560, 2561, 2562, 2563, 2564, 2565, 2566, 2567, 2568, 2569, 2570, 2571, 2572, 2573, 2574, 2575, 2576, 2577, 2578, 2579, 2580, 2581, 2582, 2583, 2584, 2585, 2586, 2587, 2588, 2589, 2590, 2591, 2592, 2593, 2594, 2595, 2596, 2597, 2598, 2599, 2600, 2601, 2602, 2603, 2604, 2605, 2606, 2607, 2608, 2609, 2610, 2611, 2612, 2613, 2614, 2615, 2616, 2617, 2618, 2619, 2620, 2621, 2622, 2623, 2624, 2625, 2626, 2627, 2628, 2629, 2630, 2631, 2632, 2633, 2634, 2635, 2636, 2637, 2638, 2639, 2640, 2641, 2642, 2643, 2644, 2645, 2646, 2647, 2648, 2649, 2650, 2651, 2652, 2653, 2654, 2655, 2656, 2657, 2658, 2659, 2660, 2661, 2662, 2663, 2664, 2665, 2666, 2667, 2668, 2669, 2670, 2671, 2672, 2673, 2674, 26

1. *Journal of the American Medical Association*, 1997; 278: 1039-1044.

Copyright © 2000 John Wiley & Sons, Inc.

...the ... ..

1. The first of these is the fact that the  
2. second of these is the fact that the  
3. third of these is the fact that the  
4. fourth of these is the fact that the  
5. fifth of these is the fact that the

1. The first step is to identify the problem or goal. This involves understanding the current situation and what needs to be achieved.

100-443887-1000

THE UNIVERSITY OF CHICAGO

ALL INFORMATION CONTAINED HEREIN IS UNCLASSIFIED  
DATE 01-21-2001 BY 60322 UCBAW

Page

<u>Complaints.</u>	Many written and oral complaints against Park Concessioners accommodations, housekeeping, food prices, service	14
<u>Roads &amp; Trails</u>	Miscellaneous projects	14-15
<u>Campgrounds</u>	Use extremely heavy during August, completely filled on several days Campgrounds closed: Cascades for repairs - Aug. 27 E-loop of Lewis Lake - Aug. 27 Norris Campground - for season - Aug. 29	
<u>Forest Fire Protection</u>	9 fires during month; 5 man-caused, 4 lightning, 8.83 acres burned. Helicopter and plane service available all month	15
<u>Insects &amp; Tree Diseases</u>	Infestation appears to be lodgepole pine sheath miner along south boundary trail Bechler River Ranger Station area	15
<u>Buildings &amp; Utilities</u>	Work continued Lamar Research Center Additional street lights in Mammoth area New kiosk at South Entrance	15
<u>Soil Conservation</u>	New snow gauging station Thorofare Country can be read by aircraft; one south and west of Phantom Fumarole on Pitchstone can be read by aircraft; Aerial snow survey marker erected on Parker Peak	16
<u>WILDLIFE</u>		
<u>Bear:</u>	Statistics and Incidents listed  Black bear cub shipped to Flagstaff zoo  Grizzly bears observed in Gardiner Dump, O.F. Fire Cache; observed and trapped Canyon and Otter Creek campgrounds	17
<u>Bison:</u>	70 in Lamar Valley Aug. 27	
<u>Bobcat</u>	One seen on Nez Perce Creek, Aug. 2; one seen 6 miles off NHE on Aug. 4	17
<u>Crane</u>	2 sandhill cranes, Hayden Valley. 9 Duck Creek, Aug. 9	17



1961	1961	1961
1962	1962	1962
1963	1963	1963
1964	1964	1964
1965	1965	1965
1966	1966	1966
1967	1967	1967
1968	1968	1968
1969	1969	1969
1970	1970	1970
1971	1971	1971
1972	1972	1972
1973	1973	1973
1974	1974	1974
1975	1975	1975
1976	1976	1976
1977	1977	1977
1978	1978	1978
1979	1979	1979
1980	1980	1980
1981	1981	1981
1982	1982	1982
1983	1983	1983
1984	1984	1984
1985	1985	1985
1986	1986	1986
1987	1987	1987
1988	1988	1988
1989	1989	1989
1990	1990	1990
1991	1991	1991
1992	1992	1992
1993	1993	1993
1994	1994	1994
1995	1995	1995
1996	1996	1996
1997	1997	1997
1998	1998	1998
1999	1999	1999
2000	2000	2000
2001	2001	2001
2002	2002	2002
2003	2003	2003
2004	2004	2004
2005	2005	2005
2006	2006	2006
2007	2007	2007
2008	2008	2008
2009	2009	2009
2010	2010	2010
2011	2011	2011
2012	2012	2012
2013	2013	2013
2014	2014	2014
2015	2015	2015
2016	2016	2016
2017	2017	2017
2018	2018	2018
2019	2019	2019
2020	2020	2020
2021	2021	2021
2022	2022	2022
2023	2023	2023
2024	2024	2024
2025	2025	2025
2026	2026	2026
2027	2027	2027
2028	2028	2028
2029	2029	2029
2030	2030	2030
2031	2031	2031
2032	2032	2032
2033	2033	2033
2034	2034	2034
2035	2035	2035
2036	2036	2036
2037	2037	2037
2038	2038	2038
2039	2039	2039
2040	2040	2040
2041	2041	2041
2042	2042	2042
2043	2043	2043
2044	2044	2044
2045	2045	2045
2046	2046	2046
2047	2047	2047
2048	2048	2048
2049	2049	2049
2050	2050	2050
2051	2051	2051
2052	2052	2052
2053	2053	2053
2054	2054	2054
2055	2055	2055
2056	2056	2056
2057	2057	2057
2058	2058	2058
2059	2059	2059
2060	2060	2060
2061	2061	2061
2062	2062	2062
2063	2063	2063
2064	2064	2064
2065	2065	2065
2066	2066	2066
2067	2067	2067
2068	2068	2068
2069	2069	2069
2070	2070	2070
2071	2071	2071
2072	2072	2072
2073	2073	2073
2074	2074	2074
2075	2075	2075
2076	2076	2076
2077	2077	2077
2078	2078	2078
2079	2079	2079
2080	2080	2080
2081	2081	2081
2082	2082	2082
2083	2083	2083
2084	2084	2084
2085	2085	2085
2086	2086	2086
2087	2087	2087
2088	2088	2088
2089	2089	2089
2090	2090	2090
2091	2091	2091
2092	2092	2092
2093	2093	2093
2094	2094	2094
2095	2095	2095
2096	2096	2096
2097	2097	2097
2098	2098	2098
2099	2099	2099
2100	2100	2100

		<u>Page</u>
<u>Elk:</u>	Long-range wildlife mgt.plan for YNP completed in draft; Recommendation for removal of 1,660 animals from Northern Herd this winter	17
<u>Geese.</u>	Canada geese observed in Lamar Valley	17
<u>Mountain Lion</u>	2 seen in O.F. area; Aug. 15 on Fountain Flats and one on Lone Star Geyser road Aug. 25. Visitor reported one near Canyon Junction	17
<u>PUBLIC AFFAIRS</u>		
<u>Publicity</u>	Yellowstone Weekly News issued each Thursday Three press releases issued: return of first millionth visitor; retirement of W.A.Olson; Director's visit	17
<u>Religious &amp; Chapel Use</u>	Services for all faiths conducted throughout Park	17
<u>Public Relations</u>	Assoc.Supt.Gastelum wrote Guest Editorial, <u>Billings Gazette</u> , Aug. 29 Chief Park Naturalist Good presented talk to Dr. Dorf's class at Specimen Ridge on Aug. 25	17-18
<u>Contracts</u>	Listed	18
<u>Design and Construction</u>	Listed	19-20-21







UNITED STATES  
DEPARTMENT OF THE INTERIOR  
NATIONAL PARK SERVICE

Yellowstone National Park, Wyoming 83020

REPLY REFER TO:

A2823

September 8, 1964

Memorandum

To: Director

From: Superintendent, Yellowstone

Subject: Monthly Narrative Report for August 1964

General

Weather Conditions. The first two weeks of August were typical of summer weather with clear days and warm temperatures. Fall weather arrived, however, on August 18 and snow at higher elevations closed roads on passes or made travel conditions unfavorable. On the nights of August 20-21 and 26-27 and five hours on the 29th the Beartooth Highway was closed because of snow. Craig Pass and Dunraven Pass were snowcovered for brief periods and roads ice in several locations on August 29. Beginning August 18 lower night and daytime temperatures prevailed discouraging visitors from entering and staying in the Park. This weather condition resulted in noticeable drop in travel during the final week of the month as compared to the same time during 1963.

Listed are reported maximum and minimum temperatures:

North Entrance	91 degrees 8/3	40 degrees 8/21
West Yellowstone	91 degrees 8/17	24 degrees 8/22
Tower Fall	88 degrees 8/18	23 degrees 8/25
Headquarters	88 degrees 8/7	33 degrees 8/21
Lamar	86 degrees 8/4	23 degrees 8/25
Old Faithful	84 degrees 8/6	29 degrees 8/21
Northeast	82 degrees 8/17-18	24 degrees 8/30
East	82 degrees 8/28	27 degrees 8/30

Increase or Decrease in Travel. Visitation for August was 609,905 as compared to 593,856 in 1963, an increase of 16,049 or 2.7 percent. Visitors for the month of August 1962, the record year, were 592,606.

Comparison of previous years:

<u>August</u>	<u>Visitors</u>	<u>Vehicles</u>
1964	609,905	169,418
1963	593,856	164,960
1962	592,606	164,614



Travel for the year reached a high increase of 5 percent above that of last year during the beginning of the month and held a substantial increase until unfavorable weather conditions prevailed in late August. At the end of August travel was slightly ahead of the record year, 1962.

All modes of travel showed an increase for the month of June, July and August except boats.

<u>1963-1964</u>	<u>Percent</u>
June	- 21.9%
July	- 3.4%
August	- 12.1%

As there has been no change in boat registration, we assume some of the use is being directed to other water recreational facilities.

Range. Dr. Odell Julander, Project Leader, U.S. Forest Service, Intermountain Forest and Range Experiment Station, Ogden, Utah, met with the Park biologists August 11-12 and discussed and inspected, in the field, range studies related to aspen on the Northern Yellowstone range. Dr. Julander is working on a study of relationships of cattle and wildlife to aspen regeneration in the intermountain area and the permissible use of aspen by these animals. An ecologist will work with him, and they hope that in cooperation with Yellowstone National Park they will be able to include this area in their study. This area will serve as a key area since there are no livestock involved.

Visitors. Mr. Don Underwood, writer for Life magazine was in the Park August 10 to conduct interviews and do research for a book he is writing on the 1959 earthquake. Following the earthquake, Mr. Underwood wrote the feature article describing the earthquake and its effects and furnished the cover photograph for Life.

Mr. Georges Klotz, NBC, Washington, director of "Beautiful America," toured the Park August 1 and 2 searching for scenes to illustrate "Beautiful America" and crowded recreational areas.

Foreign Visitors. Members of a Japanese Park Study Team visited the Park July 31, August 1 and 2. The purpose of the visit was to tour as much of the Park as possible and acquaint themselves with development plans. The visitors were shown various features of the Park by Park personnel and inspected developments and reviewed plans at Grant Village with WODC Landscape Architect William Rosenberg. On the final



At the end of August travel was still slow in the coastal zone. / 10 /

ALL OTHERS TO BE KEPT IN THE HOUSE OF COMMONS FOR THE NEXT 10 DAYS, ONLY ONE

1.  $\frac{1}{2} \times \frac{1}{2} = \frac{1}{4}$   
 2.  $\frac{1}{2} \times \frac{1}{2} = \frac{1}{4}$   
 3.  $\frac{1}{2} \times \frac{1}{2} = \frac{1}{4}$   
 4.  $\frac{1}{2} \times \frac{1}{2} = \frac{1}{4}$   
 5.  $\frac{1}{2} \times \frac{1}{2} = \frac{1}{4}$   
 6.  $\frac{1}{2} \times \frac{1}{2} = \frac{1}{4}$   
 7.  $\frac{1}{2} \times \frac{1}{2} = \frac{1}{4}$   
 8.  $\frac{1}{2} \times \frac{1}{2} = \frac{1}{4}$   
 9.  $\frac{1}{2} \times \frac{1}{2} = \frac{1}{4}$   
 10.  $\frac{1}{2} \times \frac{1}{2} = \frac{1}{4}$

As there has been no change in local registration, we remain in the same position as before.

[illegible][illegible]

1. George Llewellyn, Director of Technical Services, advised the Park Agent that the following items were in the inventory:

[illegible]

day of their visit the entire group met with members of the Park staff and reviewed the Master Plan for Yellowstone. Special interpretive services of Mr. Otake, WODC Engineer assigned to Grand Teton National Park, were obtained through Superintendent Fagergren to assist in the meeting. Mr. Otake's services were extremely helpful, and we are appreciative of his participation.

A Japanese Mineral Mining Industry Study Team composed of 13 company executives and two program coordinator/interpreters sponsored by the Japan Productivity Center toured the Park August 2.

Miss Natasa Paparella of Yugoslavia visited the Park August 3 and 4.

Mr. Barnabas Sessanga, Uganda, Africa, Parks System toured the Park August 5 and 6 in company with Park personnel.

Mr. and Mrs. Fabian Jarrin, Quito, Ecuador, General Director of Forests, Ministry of Development, were in the Park August 16-19.

Mr. Regulo D. Bala, Philippines, Regional Director, Reforestation, Administration, Development of Agriculture and Natural Resources, was in the Park August 16-19.

Messrs. Jarrin and Bala were on Eisenhower Exchange Fellowships and were interested in forests, recreation, fishing, hunting, and National Park uses. They traveled to Yellowstone together.

Mr. Henry Fosbrooke, Conservator of the Ngorongoro Conservation Area, Republic of Tanganyika and Zanzibar, was in the Park August 18-20.

Mr. Khosrow Sariri, Chief Game Warden, Game and Fish Department, Tehran, Iran, arrived August 20. Mr. Sariri was interested in wildlife.

Mr. Bruno Erath, Editor of Alpine Program, Bavarian Radio, and Dr. Erwin Rothlauf, free lance contributor of Bavarian Radio, Germany, arrived August 21. The purpose of their trip was to tour the United States and Canada for information about North American mountains for features on mountain climbing in foreign countries for a series of broadcast features, totaling three hours. Planned features will cover wildlife, conservation, National Parks, mountain sports, etc.

Mr. Wang Lau, Taipei, Taiwan, Executive Director, China Association of Literature and Arts and member of the National Assembly, arrived on August 26. Mr. Wang is an important Chinese novelist. He is also a





water color artist who has been doing work for the United States Information Service and will be painting scenes during his visit.

Mr. Walter Leuthold, Zurich, Switzerland, a graduate ecology student at Washington State University studying under Dr. Buechner, visited the Park August 27 and discussed wildlife management. Mr. Leuthold has worked in Africa on a number of projects with Dr. Buechner and was especially interested in our methods of wildlife control.

Dr. Nguyen Quant Trinh, Vietnam, Professor of Nuclear Physics, Saigon and at the Sorbonne, Rector of the University, Saigon, and Secretary of State for Education, arrived August 31. Dr. Trinh is one of the foremost if not the top authority on atomic physics in Southeast Asia. He is the key figure in Vietnamese scientific delegations in world and regional conferences. He has been associated with the International Commission on National Parks, IUCN, and is a leading supporter of National Park programs throughout Southeast Asia. His special interests are National Parks, Wildlife Reserves, Interpretation and Public Education.

AFRICAN STUDENT PROGRAM. Anthony Antao, Marquette University, Zanzibar, Economics and History; and John Nguthu, Earlham College, Indiana, Kenya, Physical Science, arrived on August 16. Obasi Onuoha, University of Nebraska, Nigeria, Mechanical Engineering, and Joseph Okpahu, Northwestern University, Nigeria, Civil Engineering arrived on August 17.

This group of African students was one of the interested groups to visit Yellowstone. Though they had no knowledge of National Parks, they responded tremendously to their nine-day visit. The Park program was arranged to give them a basic tour of the Park and an opportunity to see, firsthand, many of its features. This was followed by visits and meetings with specific divisions administering programs of interest to the group as a whole or to individuals. The entire pace of the visit was purposely a leisurely one and guided in principle by the interest and spontaneity of the visitors.

Each participant spoke and understood English well and all had a strong desire to learn as much as possible about the Park, its administration and the resulting importance to the local communities and the Nation.

Special Activities. Director George B. Hartzog, Jr. was in Yellowstone August 18 through August 22 and attended several meetings





during his stay. On August 20 a group of employees at headquarters heard the Director speak on National Park Service reorganization and the new Job Corps program.

Midwest Regional Director Lemuel A. Garrison arrived August 18 for the remainder of the month, and attended various meetings with Park and Service officials.

Special Activities. Chief Park Ranger Wayne R. Howe and Fire Control Specialist Louis L. Gunzel attended the West Yellowstone airport meeting on August 14 at Hebgen Lake Ranger Station. This was an inter-agency meeting on airport construction and financing, attended by representatives of U.S. Forest Service, Bureau of Land Management and the National Park Service.

Construction and Maintenance Superintendent (Roads) Arthur Minish met with representatives of the U.S. Forest Service and Bureau of Public Roads concerning the reconstruction of the Clarks Fork and Crazy Creek bridges and reconstruction and realignment of the three-mile section of the Beartooth Highway from the Montana-Wyoming line towards the Sunlight Basin Road.

Chief Park Ranger Wayne R. Howe and Biologists Robert E. Howe and William J. Barmore, Jr. attended a bison management meeting held at Mammoth on August 24-26. Bison brucellosis management control plan for 1964-65 was completed.

Ray H. Mattison, Visitor Service Coordinator (History) Midwest Regional Office, discussed historical matters with Park Historian Haines and Chief Park Naturalist on August 3.

Merrill J. Mattes, Historian from the Midwest Regional Office, discussed historical research with the Park Historian on August 10.

Rogers Engineering of San Francisco, recently awarded a contract to conduct an electric power study for Yellowstone, commenced work August 12 and completed taking field data for the study. A final report is expected by mid-September.

Photographer Bob Spring, contractor to furnish wilderness photographs for exhibits for Grant Village Visitor Center, was in the Bechler area August 2-4 obtaining photographs for the exhibit.



the new Joe Ours company.

RECEIVED  
JAN 10 1964  
U.S. DEPARTMENT OF AGRICULTURE  
WASHINGTON, D.C. 20250

[illegible]

1. The first of these is the fact that the majority of the population of the United States is now living in urban areas. This is a result of the process of urbanization, which has been going on since the beginning of the 20th century. The process of urbanization is the movement of people from rural areas to urban areas. This is a result of the fact that urban areas offer more opportunities for employment and education than rural areas do. The process of urbanization has led to the growth of large cities and the decline of small towns and villages. This has had a major impact on the way of life in the United States. The majority of the population now lives in cities, and this has led to a number of changes in the way of life. For example, the majority of the population now lives in multi-story apartment buildings or houses, and this has led to a change in the way of life. The majority of the population now lives in cities, and this has led to a number of changes in the way of life. For example, the majority of the population now lives in multi-story apartment buildings or houses, and this has led to a change in the way of life.

For 1964-65 see caption.

1. The first step is to identify the problem or question that needs to be answered. This involves understanding the context and the specific information required.

ALL INFORMATION CONTAINED HEREIN IS UNCLASSIFIED EXCEPT WHERE SHOWN OTHERWISE

Report is required to be submitted to the Director of the Bureau of the Census, Washington, D.C. 20540, by the following date:

For details see: Village Village Village, was in the  
area about 1-2 miles from the village.

Yellowstone was revisited on August 7 when Dr. and Mrs. Paul Raber of Decatur, Illinois, made their second visit to the Park. On their first visit in September, 1948, Dr. Raber and his bride of three weeks were greeted as the millionth visitor, the first time in history that Park visitation reached that count. Today, the Rabers' second visit is perhaps as symbolic as the first, for just as Park attendance figures have grown in the last 16 years--so has the Raber family. The Rabers were accompanied by their three children: Martha Jane, 14; Mary Gail, 13; and John, age 10. The Rabers called at Park Headquarters and were warmly greeted by Superintendent John S. McLaughlin. They were much impressed by the number of people in the Park and its clean roadsides. They stated their next visit would probably include their grandchildren.

The Interior Missouri Basin Field Committee met August 19-20 at Canyon Village with approximately 45 people attending. Director George B. Hartzog, Jr. reported on Highlights of the National Park Service Activities to members of the Committee.

The National Park Service Master Plan Committee met in Yellowstone on August 24-26. The Committee composed of Associate Director A. Clark Stratton; Consultant Sigurd Olson; Sanford Hill, Chief, WODC; T. J. Allen, Special Assistant to the Director; and Superintendent McLaughlin met briefly with concessioner representatives to discuss Master Plan objectives. Regional Director Garrison and Thomas F. Flynn also attended as ex-officio members of the group.

The National Park Service Staffing Study Committee was in the Park August 26 through September 4. Members of the Committee were former Park Superintendent and National Park Service Director Horace M. Albright, and former Park Superintendent Edmund B. Rogers; Thomas J. Allen, Special Assistant to the Director; Edwin C. Kenner, Chief of Maintenance; William S. Bahlman, Management Analysis; George F. Baggle, Associate Regional Director (Operations); and Fred J. Novak, Associate Regional Director (Administration). The Committee met with division chiefs and other key Park personnel during their stay in the Park to evaluate the Park's staffing requirements. A report of the Study will be made to the Director at a later date. Pending completion of the Study and its review, all permanent position classification functions are suspended. Considerable time and effort was devoted by all divisions to prepare information and data for the Master Plan Committee and the Staffing Study Committee.





Civil Defense. Mr. G. S. Lugenbeel, Regional Field Officer for Civil Defense, Denver, and Mr. Jerome C. Larsen and Mr. Willard A. Reiling, Coordinators of Civil Defense Education for Wyoming, Laramie, met with officials of Yellowstone National Park on August 14 to set up civilian training, radiological monitoring instructors' school and make plans for connecting Park headquarters Communication Center with the National Warning System. The Headquarters Communication Center is to be an alert center for all the towns surrounding the Park and for Grand Teton National Park.

A "Seminar for Emergency Preparedness" has been planned for October 19 at Mammoth for Park Service and Concessioner employees. A two-day school for Radiological Monitoring and two days training instructors will be held the latter part of January or early February. These dates are tentative at this time.

A small private plane which was reported missing August 26 while en route from Cody to Pinedale, Wyoming was found at 5:00 p.m. on August 27, in the vicinity of Silver Tip Basin, outside the Park and northeast of the East Entrance. One of the three persons aboard survived, Miss Roberta Kowaczek, 25, of Chicago. Her father, Richard, 51, and brother, Peter, 19 were killed. Miss Kowaczek spent two nights in mountain wilderness before being rescued by horsemen.

Earthquake. A window-rattling earth tremor was reported at Madison on August 18 at about 1:50 a.m. This tremor was reported from West Yellowstone also.

Superintendent's Staff Meetings were held August 13 and 27.

### Administration

#### Personnel.

Transfers. Robert O. Binnewies, Park Ranger, GS-7, to GS-9, Department Manager Training Program, Washington Office, effective August 20.

Harvey B. Reynolds, Programs and Plans Officer, GS-13, to Special Assistant to Regional Director (Development), Midwest Region, Omaha, GS-14, effective August 30.

Retirement. William A. Olson, Foreman II, Painter, retired optionally August 15, after more than 22 years of service at Yellowstone. Mr. Olson was presented a Commendable Service Award.



David H. Lyons, Painter, retired July 1 for disability after over nine years of service at Yellowstone. Mr. Lyons was presented a Commendable Service Award.

Special Assignment. On August 14, Rangers Lynn H. Thompson, Jr. and Donald C. Yestness, Mechanic Lester C. Abbie, and Truck Driver George Jump departed Yellowstone with boats "Meldrum" and "Baronett" to Flaming Gorge Area Project for Dedication ceremonies on August 17.

The "Meldrum" was used to transport the First Lady, Mrs. Lyndon B. Johnson, Secretary of the Interior and Mrs. Udall, Director George B. Hartzog, Jr., Senator and Mrs. McGee (Dem-Wyo), Senator and Mrs. Moss (Dem-Utah), Secret Service, press and others across Flaming Gorge Lake.

From August 14 through 17, Park Photographer William S. Keller was on special assignment to Grand Teton National Park for photographic coverage of the visit of Mrs. Lyndon B. Johnson.

Births. A daughter, Tracey Lucille, was born August 7, 1964 at the Lake Hospital to Frederick and Judith Williams. Mr. Williams is a Yellowstone Park Company employee.

Deaths. Mr. E. L. Hamilton, age 75, of 1147 Sanger Street, Philadelphia, Pennsylvania, died August 2 as the result of a heart attack in the Mammoth Hotel. The body was taken to a Livingston mortuary.

Mr. Herbert Ziebart, Sr., NPS employee, 62 years of age, of 1010 Columbia Avenue, Cederburg, Wisconsin died as the result of a heart attack about 1:45 p.m. while driving an NPS truck on the Cub Creek curve of the East Entrance Road, August 6.

Mr. Glen Cushman, age 43, of Rochester, New York suffered a fatal heart attack at 11:25 a.m. on August 9 in the vicinity of Yankee Jim Canyon while en route via the Yellowstone Park Medical Service Ambulance from Mammoth to the Memorial hospital in Livingston, Montana.

Rolla E. Ford, August 11, Sun City, California, age 68 years, died in the Lake Hospital. Burial was in Crest Lawn Cemetery, Norco, Riverside County, California.

Steven Robert Bailey, age 16, son of Robert C. Bailey, 7735 Day St., Tujunja, California was killed in a fall into the Grand Canyon of the Yellowstone between Grand View and Inspiration Point at 12:00 noon, August 14.



Walter H. Evans, President, returned July 1 for duty after a year of service in California. The year was preceded by a period of leave.

Special assignment. On August 14, 1941, Evans was assigned to the position of Executive Director of the California State Board of Corrections, and was also assigned to the position of Executive Director of the California State Board of Prisoners. Evans was also assigned to the position of Executive Director of the California State Board of Prisoners.

The "Yellowstone" was used to transport the first party, Evans, to the State Board of Corrections, and was also used to transport the first party, Evans, to the State Board of Prisoners. Evans was also assigned to the position of Executive Director of the California State Board of Prisoners.

From August 14 through 17, 1941, Evans was assigned to the position of Executive Director of the California State Board of Corrections, and was also assigned to the position of Executive Director of the California State Board of Prisoners.

Evans, a member of the first party, was assigned to the position of Executive Director of the California State Board of Corrections, and was also assigned to the position of Executive Director of the California State Board of Prisoners.

Evans, a member of the first party, was assigned to the position of Executive Director of the California State Board of Corrections, and was also assigned to the position of Executive Director of the California State Board of Prisoners.

Evans, a member of the first party, was assigned to the position of Executive Director of the California State Board of Corrections, and was also assigned to the position of Executive Director of the California State Board of Prisoners.

Evans, a member of the first party, was assigned to the position of Executive Director of the California State Board of Corrections, and was also assigned to the position of Executive Director of the California State Board of Prisoners.

Evans, a member of the first party, was assigned to the position of Executive Director of the California State Board of Corrections, and was also assigned to the position of Executive Director of the California State Board of Prisoners.

Evans, a member of the first party, was assigned to the position of Executive Director of the California State Board of Corrections, and was also assigned to the position of Executive Director of the California State Board of Prisoners.

Joseph Karr Ladd, father of Ranger Benjamin Ladd, passed away August 18 in Ipova, Illinois.

Miscellaneous. Mr. William Clavier, National Representative of the National Federation of Federal Employees, Portland, Oregon, talked to a group of employees on various topics of interest to Federal employees.

A Coffee Hour honoring William "Bill" Olson and David H. Lyons (Painters) retirements was held August 14. Mr. Olson and Mr. Lyons were presented with Commendable Service Awards and lifetime passes to all parks.

A Farewell Coffee honoring Harvey and Lois Reynolds and Robert and Midge Binnewies was held August 28 prior to their transferring to the Midwest Regional Office and the Washington Office, respectively.

Mr. James Kimberlin, former Yellowstone Park employee, was a surgical patient in the Memorial Hospital, Livingston, August 27 and has been moved to a Billings hospital for further observation.

Miss Jean Reynolds, daughter of Mr. and Mrs. Harvey B. Reynolds, attended All-State Girl Scout Encampment at Camp Woodhaven near Redwood City, California. Girl Scouts representing states throughout the nation received 2½ weeks of counselor training on various scouting projects. As a member of the Gardiner Girl Scout Troop, Miss Reynolds was chosen to represent the Midland Empire Council at the Encampment.

Mammoth School. The Mammoth school convened August 31 for a one-half day session. There were 61 students enrolled. Teachers are:

Mr. Fred M. Renfro, Principal and 5-6 Grades Teacher	
Mrs. Myrle Niccoli,	4th Grade
Mrs. Judith H. Harris,	1st Grade
Miss Lorna Rhodes,	2nd-3rd Grades
Mrs. ElClaire Luse,	Music

#### Conservation, Interpretation and Use

Interpretive Services. The following interpretive services terminated during the month:

#### North District

Tower Creek Walk	8/26	Nature Walk	8/26
Tower Creek Campfire Program	8/26	Terrace Coverage	8/27
Bird Search	8/21	Fossil Forest Hike	8/27
Beaver Lakes Hike	8/23		

1. The first step is to identify the problem or issue that needs to be addressed. This involves gathering information and understanding the context of the problem.

1. The first step in the process of the investigation is the identification of the problem. This is done by the investigator who is responsible for the study. The next step is to collect data. This is done by the investigator who is responsible for the study. The next step is to analyze the data. This is done by the investigator who is responsible for the study. The next step is to interpret the results. This is done by the investigator who is responsible for the study. The next step is to draw conclusions. This is done by the investigator who is responsible for the study. The next step is to report the findings. This is done by the investigator who is responsible for the study. The next step is to discuss the implications. This is done by the investigator who is responsible for the study. The next step is to recommend further research. This is done by the investigator who is responsible for the study. The next step is to conclude the study. This is done by the investigator who is responsible for the study.

1. The first part of the document is a letter from the President of the United States to the Congress, dated January 3, 1862. It is a very long letter, and it contains a great deal of information about the state of the country at that time. It is a very important document, and it is one of the most interesting documents in the collection.

[illegible]

1. The following information was obtained from the records of the Department of the Interior, Bureau of Land Management, regarding the land owned by the United States in the State of Nevada:

to receive the following information from the Bureau:

As a result of the Bureau's investigation, the Bureau has received a report of a person who is living in a foreign country, who is a member of the Communist Party, and who is a member of the Bureau.

This report is being furnished to the Bureau for its information.

Very truly yours,  
Special Agent in Charge

1. The first step is to identify the problem. This involves understanding the situation and the goals that need to be achieved. It is important to gather all relevant information and to define the problem clearly.

Mr. J. H. Smith, Jr., President,  
Mr. J. H. Smith, Jr., Secretary,  
Mr. J. H. Smith, Jr., Treasurer,  
Mr. J. H. Smith, Jr., Chairman,  
Mr. J. H. Smith, Jr., Vice-Chairman,

1. The first step in the process is to identify the problem or issue that needs to be addressed. This involves gathering information and understanding the context of the situation.

Figure 1

1/27	1960-1961	1960-1961	1960-1961
1/28	1961-1962	1961-1962	1961-1962
1/29	1962-1963	1962-1963	1962-1963
1/30	1963-1964	1963-1964	1963-1964
1/31	1964-1965	1964-1965	1964-1965
2/1	1965-1966	1965-1966	1965-1966
2/2	1966-1967	1966-1967	1966-1967
2/3	1967-1968	1967-1968	1967-1968
2/4	1968-1969	1968-1969	1968-1969
2/5	1969-1970	1969-1970	1969-1970
2/6	1970-1971	1970-1971	1970-1971
2/7	1971-1972	1971-1972	1971-1972
2/8	1972-1973	1972-1973	1972-1973
2/9	1973-1974	1973-1974	1973-1974
2/10	1974-1975	1974-1975	1974-1975
2/11	1975-1976	1975-1976	1975-1976
2/12	1976-1977	1976-1977	1976-1977
2/13	1977-1978	1977-1978	1977-1978
2/14	1978-1979	1978-1979	1978-1979
2/15	1979-1980	1979-1980	1979-1980
2/16	1980-1981	1980-1981	1980-1981
2/17	1981-1982	1981-1982	1981-1982
2/18	1982-1983	1982-1983	1982-1983
2/19	1983-1984	1983-1984	1983-1984
2/20	1984-1985	1984-1985	1984-1985
2/21	1985-1986	1985-1986	1985-1986
2/22	1986-1987	1986-1987	1986-1987
2/23	1987-1988	1987-1988	1987-1988
2/24	1988-1989	1988-1989	1988-1989
2/25	1989-1990	1989-1990	1989-1990
2/26	1990-1991	1990-1991	1990-1991
2/27	1991-1992	1991-1992	1991-1992
2/28	1992-1993	1992-1993	1992-1993
2/29	1993-1994	1993-1994	1993-1994
2/30	1994-1995	1994-1995	1994-1995
2/31	1995-1996	1995-1996	1995-1996
2/32	1996-1997	1996-1997	1996-1997
2/33	1997-1998	1997-1998	1997-1998
2/34	1998-1999	1998-1999	1998-1999
2/35	1999-2000	1999-2000	1999-2000
2/36	2000-2001	2000-2001	2000-2001
2/37	2001-2002	2001-2002	2001-2002
2/38	2002-2003	2002-2003	2002-2003
2/39	2003-2004	2003-2004	2003-2004
2/40	2004-2005	2004-2005	2004-2005
2/41	2005-2006	2005-2006	2005-2006
2/42	2006-2007	2006-2007	2006-2007
2/43	2007-2008	2007-2008	2007-2008
2/44	2008-2009	2008-2009	2008-2009
2/45	2009-2010	2009-2010	2009-2010
2/46	2010-2011	2010-2011	2010-2011
2/47	2011-2012	2011-2012	2011-2012
2/48	2012-2013	2012-2013	2012-2013
2/49	2013-2014	2013-2014	2013-2014
2/50	2014-2015	2014-2015	2014-2015
2/51	2015-2016	2015-2016	2015-2016
2/52	2016-2017	2016-2017	2016-2017
2/53	2017-2018	2017-2018	2017-2018
2/54	2018-2019	2018-2019	2018-2019
2/55	2019-2020	2019-2020	2019-2020
2/56	2020-2021	2020-2021	2020-2021
2/57	2021-2022	2021-2022	2021-2022
2/58	2022-2023	2022-2023	2022-2023
2/59	2023-2024	2023-2024	2023-2024
2/60	2024-2025	2024-2025	2024-2025
2/61	2025-2026	2025-2026	2025-2026
2/			



### South District

Elephant Back Walk	8/20	West Thumb Evening Programs	8/23
Bridge Bay Evening Programs	8/21	West Thumb Conducted Hike	8/23
Storm Point Walk	8/21	Canyon Rim Talks	8/30
Mt. Washburn Hike	8/22	Fishing Bridge Conducted Hike	8/30
Clear Lake Hike	8/23	Mud Volcano Talks and Walks	8/30

Many informal talks were terminated during the month.

History. A map of the Eagle Creek prehistoric Indian site was prepared by Park Historian Haines. The placer mines at the mouth of Crevice Creek were mapped on August 25 and 26. Photographs were borrowed from the Hall family in Gardiner, Montana, to be copied for interpretive use.

YIMA. A new trend has been noticed this year in that the larger and more expensive books are selling in larger volume than less expensive ones. Mr. Marler's booklet "Studies of Geysers and Hot Springs Along the Fire-hole" was placed on sale during the month.

### Research and Observation.

STEAMBOAT GEYSER. More active and more regular than ever before in its history, Steamboat Geyser had 12 eruptions during the months of June, July and August. They varied between five to nine days with three nine-day intervals in a row in August. The water phase of the north vent varied from three to 30 minutes, while the water phase in the south vent varied from one to two hours. Many attempts were made to find means of predicting the geyser more accurately. At first, gas vents above the geyser seemed promising, but failed to be consistent. Attempts to relate short intervals of Echinus were inconclusive and more data needs to be gathered in this area. It is possible that height of water in the north vent might be an indicator. It appears that the higher the water is in the north vent, the more likely there will be an eruption.

### Known Major Eruptions of Steamboat Geyser:

1878 - At least two plays	1902 - At least one play
1892 - At least one play	1911 - At least one play

1961

<u>Month</u>	<u>Date</u>	<u>Time</u>	<u>Interval</u>
September	2	early a.m.	50 years*

\* indicates undetected eruption(s) may have occurred in this interval.



# Steamboat Geyser (Cont.)

1962

<u>Month</u>	<u>Date</u>	<u>Time</u>	<u>Interval</u>	<u>Month</u>	<u>Date</u>	<u>Time</u>	<u>Interval</u>
August	27	1:25 p.m.	*	October	13		8 days+
September	14		*	November	16	early a.m.	*
September	24		10 days+	December	25		*
October	5		11 days+				

1963

June	20		*	October	5	morning	10½ days+
June	27		7 days+	October	13	late p.m.	8½ days+
July	5		8 days+	October	23	morning	9½ days+
July	15		10 days+	November	1	night	9½ days+
July	30		15 days+	November	23	3:30 p.m.	/*
August	8		9 days+	December	25	morning	*
August	16		8 days+				
August	25		9 days+				
September	5	night	11 days+	/ (However, algae became well established during this period and there were probably no plays.)			
September	15	morning	9½ days+				
September	24	night	9½ days+				

1964

January	2	midafternoon	8½ days+	June	22	11:00 a.m.	7 days	167 hours
January	13	unknown	11 days+	June	28	2:15 a.m.	5½ days	135 hours
January	24	11:00 a.m.	11 days+	July	2	10:00 p.m.	5 days	116 hours
February	3	early a.m.	9½ days+	July	10	6:10 p.m.	8 days	188 hours
February	23	unknown	*	July	16	9:30 p.m.	6 days	147 hours
April	8	3:45 p.m.	45 days/	July	23	4:05 p.m.	7 days	163 hours
May	4	night	*	July	31	1:00 a.m.	7½ days	177 hours
May	17	11:15 p.m.	13 days+	August	8	9:00 p.m.	9 days	212 hours
May	28	10:37 a.m.	10½ days	August	17	8:10 a.m.	8½ days	203 hours
June	9	2:15 p.m.	12 days	August	26	1:53 p.m.	9 days	222 hours
June	15	12:00 noon	6 days	September	5	7:30 a.m.	9½ days	234 hours

/ definitely established interval

+ approximate interval

\* indicates undetected eruption(s) may have occurred in this interval.



Steamship Company (Cont.)

Month	Date	Time	Destination	Days	Remarks
August	27	1:30 p.m.	October	1	
September	16		November	1	
October	14		December	10 days	
November	2		January	11 days	

1911

June	20		October	1	
July	17		November	1	
August	3		December	1	
September	18		January	10 days	
October	20		February	11 days	
November	8		March	1	
December	16		April	1	
January	23		May	1	
February	2		June	11 days	
March	13		July	11 days	
April	24		August	11 days	

1912

January	1		June	11 days	
February	13		July	11 days	
March	24		August	11 days	
April	1		September	11 days	
May	13		October	1	
June	24		November	11 days	
July	1		December	1	
August	13		January	11 days	
September	24		February	11 days	
October	1		March	11 days	
November	13		April	11 days	
December	24		May	11 days	

\* Indefinitely suspended service

\* Indicates scheduled service (may have occurred in this interval)

**BABY SPRING** at Mammoth is becoming increasingly active as is "Cedar Tree" Spring. Several new openings have appeared just south of the platform on the Main Terrace.

**OLD FAITHFUL.** August was a record setting month for Old Faithful Geyser. Both the record minimum and maximum intervals were broken. The shortest interval now is 31 minutes and the longest 96 minutes. The average interval during August was 67.6 minutes; this is a continuation of the gradual increase in average duration of interval between sequential Old Faithful Activity.

Temperatures taken of 65 thermal features in Norris Geyser Basin during the month showed some interesting comparisons with previous records. Perhaps the most significant finding was that Norris now apparently hotter (189.4 degrees) than at any time in its recorded past. A significant increase in thermal energy is apparent at the eastern end of the Porcelain Basin.

**SUNDAY GEYSER**, in lower Norris Geyser Basin, first called Milky Geyser because of its milky water, was "born" July 12. Since this was a Sunday, and since its water may clear, and since it promises to be a geyser of considerable interest, the name SUNDAY GEYSER is suggested. It is located across the walk from Hurricane Vent in an alcove west of Colloidal Pool. When it first began, its water was muddy and full of rocks and was shooting 15-20 feet. The water cleared to a milky color and the eruption was continuous for several days, three to four feet high. Then it became intermittent at three to four feet until August 21, when it began erupting 25 to 30 feet every 12 to 15 minutes. A vent across the walk by Hurricane Vent is associated with Sunday. At the conclusion of an eruption, this vent roars for about three minutes.

**Audiovisual.** On August 17 the newly received projection and control equipment for the automatic interpretive program in the Canyon Visitor Center was installed. As of the end of the month, 303 continuous showings of this program had been accomplished with a total attendance of approximately 8,500. Visitor response has been most gratifying.

**Sanitation.** Park Sanitarian made weekly inspections of various food establishments in all areas. Personnel from the U.S. Public Health Service, also made several inspections in the Park.

At 10:15 a.m. on 10/10/54, a second specimen was taken from the same locality. The specimen was found to be a female of the same species as the first specimen.

The specimen was found to be a female of the same species as the first specimen. The specimen was found to be a female of the same species as the first specimen. The specimen was found to be a female of the same species as the first specimen.

The specimen was found to be a female of the same species as the first specimen. The specimen was found to be a female of the same species as the first specimen. The specimen was found to be a female of the same species as the first specimen.

The specimen was found to be a female of the same species as the first specimen. The specimen was found to be a female of the same species as the first specimen. The specimen was found to be a female of the same species as the first specimen.

The specimen was found to be a female of the same species as the first specimen. The specimen was found to be a female of the same species as the first specimen. The specimen was found to be a female of the same species as the first specimen.

The specimen was found to be a female of the same species as the first specimen. The specimen was found to be a female of the same species as the first specimen. The specimen was found to be a female of the same species as the first specimen.



Health. Park Sanitarian Willett collected 75 water samples for analysis in the Park laboratory, of which 17 showed evidence of contamination. Samples taken from the waters of the Yellowstone River were analyzed to determine if sewage plants created an adverse effect on the river. Results of the tests were favorable.

Law Enforcement. A total of 211 reported law enforcement incidents occurred during the month. As of August 31, reported law enforcement incidents for the year totaled 505. This amount exceeds any previous reported year's incidents.

A total of 142 bonds were posted by violators. To date, 17 bonds totaling \$170 have been forfeited as a result of bear feeding violations.

Ranger Activities. Ranger patrol cars were used as ambulances for a number of emergency runs to the Lake Hospital.

North Entrance went on an 18-hour schedule August 30: 6:00 a.m. to 12:00 midnight; East Entrance began a 12-hour schedule August 30: 6:00 a.m. to 6:00 p.m.

Audits of collection activities of Park entrances using the new cash registers were made without note of discrepancies. The newly adopted system appears to be functioning well with traffic moving with a minimum of delay.

#### Concessioners.

The Yellowstone Park Company has advised they will move their offices to Billings for the winter. New address from October 1 to May 1 will be: 106 North Broadway, Billings, Montana.

The Yellowstone Park Company closed the following facilities:

Mammoth Cottages	August 29
Mammoth Hotel Dining Room	" 29
Roosevelt Lodge, food and stagecoach	" 29
Canyon Campers Cabins	" 30
Bus tour service will be on a limited basis after	" 29

The Stevenson Island Fish Fry activity was not in operation this year, as the water in the Yellowstone Lake was the second highest in 25 years. It was August 27 before the water receded sufficiently to have the Fish Fry and by then there was not time to clear the island for this activity before the usual exodus from the Park.

which, with material already collected is being made for analysis in the laboratory, of which it should be noted that the material is being taken from the water of the Baltimore Harbor and is being analyzed in a special plant located at the site of the river. Results of the tests are favorable.

The Department, a total of 111 reported the following incidents during the month. As of August 31, reported the following incidents for the year ended 1931. This month's results are being reported for the following.

A total of 111 incidents were reported by the Department. It is noted that the following 111 have been reported as a result of the following:

Major Activities. Major activities were reported for the month of emergency work on the Baltimore Harbor.

With incidents were on the 18th and 19th August 1931. As of 12:00 midnight the following were reported for the month ended 12:00 a.m. to 1:00 p.m.

Notice of collection activities of the Department during the month. The following are some of the incidents reported. The only incident reported is the following with the following activity:

#### Summary

The following are the incidents reported for the month ended 12:00 a.m. to 1:00 p.m. on the 18th and 19th August 1931. The following are the incidents reported for the month ended 12:00 a.m. to 1:00 p.m.

The following are the incidents reported for the month ended 12:00 a.m. to 1:00 p.m.

August 19	Incidents reported
20	Incidents reported
21	Incidents reported
22	Incidents reported
23	Incidents reported
24	Incidents reported
25	Incidents reported
26	Incidents reported
27	Incidents reported
28	Incidents reported
29	Incidents reported
30	Incidents reported
31	Incidents reported

The following are the incidents reported for the month ended 12:00 a.m. to 1:00 p.m. on the 18th and 19th August 1931. The following are the incidents reported for the month ended 12:00 a.m. to 1:00 p.m.

Haynes, Inc. closed their facilities at Lake Lodge Shop on August 24 and the Roosevelt Lodge Store Shop on August 29.

Hamilton Stores, Inc. closed the Lake Lodge Curio Shop on August 24.

The Yellowstone Park Service Stations closed the Tower Junction Service Station on August 29.

NPS Interpretive Services concluded at:

Tower Fall Area:

Evening Campfire Program	August 26
Tower Creek Walk	" 26
Fossil Forest Hike	" 27

Mammoth Area:

Mammoth Terrace Walk (3 hours)	August 26
Beaver Lake Hike	" 23
Morning Bird Search	" 21

The National Park Service-Concessioner August meeting was postponed until September 4.

Complaints. Many written and oral complaints have been received about concessioner accommodations and facilities being extremely dirty, poor quality of food and high prices, accommodations overpriced and not ready for occupancy at reasonable time, and inefficient and discourteous service.

Roads and Trails. Five cement driveways are complete at the new residences in the lower Mammoth residential area.

Crews repaired the sink hole in the parking area at the new school, caused by improper drainage of the area. The sewer line was repaired and the area backfilled with select material.

Trail crews began reconstruction of the trail bridge near Giant Geyser at Old Faithful. New Piers have been poured and are in the curing stage. The Beryl Springs bridge timber hand rail was replaced with aluminum hand railing to facilitate viewing Beryl Springs. Trail construction in the vicinity of Grant Village was started, and approximately 0.2 mile of trail was cleared, 0.1 mile based, and preliminary work on a 110 foot suspension bridge completed by the end of the month.



RECEIVED  
JAN 20 1964

Section on August 11, 1964

THE UNIVERSITY OF CHICAGO PRESS

1997-1998

BY KENNETH  
DO: 8  
TO: D

Search for:

10. The following table shows the number of people who attended the concert in each age group.

The National Film Service-Conservation Branch is processing

[illegible]

Source: *The Journal of American Studies*, 1971, 5, 1, 1-14.

These required the ship to be in the vicinity of the ship at the time of the explosion. The ship was not in the vicinity of the ship at the time of the explosion. The ship was not in the vicinity of the ship at the time of the explosion.

[illegible]

Six miles of road from the Beartooth Road Camp to the Sunlight Basin Junction on Route 10 were seal coated during August. Approximately 18 miles of newly sealed and halfsoled road sections throughout the Park were centerline striped this month.

Road resurfacing was accomplished on several portions of the Grand Loop road and the Beartooth Highway.

Crews began the drainage project for Canyon Village area this month with the clearing of timber and installation of approximately 100 feet of curb.

Negotiations were begun with American Snowblast Corporation of Denver, Colorado for the purchase of another Snowblast snowplow. Plans are to have a second machine available by March for spring road opening.

Campgrounds. Campground use was extremely heavy this month with several days of all campgrounds being completely filled. Most major campgrounds were filled each day during August through the 18th of the month.

The following campgrounds were closed during the month:

Cascades closed for repairs	August 27
B-Loop of Lewis Lake Campground closed	August 27
Norris Campground closed for season	August 29

Forest Fire Protection. Nine forest fires occurred during the month: five were man-caused and four were caused by lightning. Acres burned: 8.83. Helicopter service and plane service were available the entire month for forest fire detection.

Insects and Tree Diseases. The white pine disease survey was continued. An infestation of what appears to be lodgepole pine sheath miner was seen along the south boundary trail east of Bechler River Ranger Station.

Buildings and Utilities. Work continued at the Lamar Research Center, with installation of transahomes. Bases were poured for two 1,000-gallon LP tanks. The B&U portion of this project should be completed next month.

Improvements in street lighting in the Mammoth area were made with the installation of new lights in the vicinity of the Mammoth Coffee Shop.

A new kiosk for the South Entrance was constructed and installed during the month, improving entrance station operations considerably.

The office of the State Engineer is located at the corner of the building at  
the intersection of the main highway and the railroad. The building is a  
two-story structure with a gabled roof. It is constructed of brick and  
has a central entrance with a small porch. The building is surrounded by a  
fence and there is a parking lot in front of it.

The building is situated on a corner lot. It is a two-story structure with a gabled roof. It is constructed of brick and has a central entrance with a small porch. The building is surrounded by a fence and there is a parking lot in front of it.

The building is situated on a corner lot. It is a two-story structure with a gabled roof. It is constructed of brick and has a central entrance with a small porch. The building is surrounded by a fence and there is a parking lot in front of it.

The building is situated on a corner lot. It is a two-story structure with a gabled roof. It is constructed of brick and has a central entrance with a small porch. The building is surrounded by a fence and there is a parking lot in front of it.

The building is situated on a corner lot. It is a two-story structure with a gabled roof. It is constructed of brick and has a central entrance with a small porch. The building is surrounded by a fence and there is a parking lot in front of it.

The building is situated on a corner lot. It is a two-story structure with a gabled roof. It is constructed of brick and has a central entrance with a small porch. The building is surrounded by a fence and there is a parking lot in front of it.

The building is situated on a corner lot. It is a two-story structure with a gabled roof. It is constructed of brick and has a central entrance with a small porch. The building is surrounded by a fence and there is a parking lot in front of it.

The building is situated on a corner lot. It is a two-story structure with a gabled roof. It is constructed of brick and has a central entrance with a small porch. The building is surrounded by a fence and there is a parking lot in front of it.

The building is situated on a corner lot. It is a two-story structure with a gabled roof. It is constructed of brick and has a central entrance with a small porch. The building is surrounded by a fence and there is a parking lot in front of it.

The building is situated on a corner lot. It is a two-story structure with a gabled roof. It is constructed of brick and has a central entrance with a small porch. The building is surrounded by a fence and there is a parking lot in front of it.

The building is situated on a corner lot. It is a two-story structure with a gabled roof. It is constructed of brick and has a central entrance with a small porch. The building is surrounded by a fence and there is a parking lot in front of it.



### Soil Conservation.

On August 25-27 Mr. George Peak of the Soil Conservation Service installed a new snow gauging station in the Thorofare country that can be read by aircraft. This station is located near the Continental Divide on the Lynx Creek Trail. Another station is located one-fourth mile south and west of Phantom Fumerole on the Pitchstone Plateau.

An aerial snow survey marker was erected on Parker Peak, August 18-21.

### Wildlife.

Bear Statistics:	Date	District	No. of Bears	No. of Bears	No. of Bears
			1964	1963	1962
	8/7	North	17	21	14
		South	17	14	16
		West	<u>8</u>	<u>15</u>	<u>13</u>
		Total	42	50	43
	8/14	North	4	17	-
		South	13	7	-
		West	<u>14</u>	<u>18</u>	<u>-</u>
		Total	31	42	-
	8/21	North	10	13	9
		South	14	25	14
		West	<u>11</u>	<u>22</u>	<u>18</u>
		Total	35	60	41
	8/28	North	11	13	-
		South	6	11	-
		West	<u>20</u>	<u>21</u>	<u>-</u>
		Total	37	45	-

<u>Bear Incidents:</u>	<u>Through</u> <u>July 1964</u>	<u>Through</u> <u>July 1963</u>	<u>Through</u> <u>July 1962</u>
Injuries	28	27	40
Damages	152	177	98
Killed for Control	8	7	49
Killed by Accident	7	13	7
Shipped to Zoos	2	4	-

A young black bear cub in the Old Faithful area, apparently abandoned by his mother, was caught by the use of a snare and net and shipped to the zoo in Flagstaff, Arizona.

Well Location

On August 23-27, 1947, George W. of the Well Development Division located a new well gaging station in the Teton country near the town of Arden. This station is located near the old station on the Teton River. The new station is located near the old station on the Teton River. The new station is located near the old station on the Teton River.

Aerial view survey under the control of Teton Well, August 1947.

Wells

Well No.	1947	1948	1949	1950
1	17	17	17	17
2	17	17	17	17
3	17	17	17	17
4	17	17	17	17
5	17	17	17	17
6	17	17	17	17
7	17	17	17	17
8	17	17	17	17
9	17	17	17	17
10	17	17	17	17
11	17	17	17	17
12	17	17	17	17
13	17	17	17	17
14	17	17	17	17
15	17	17	17	17
16	17	17	17	17
17	17	17	17	17
18	17	17	17	17
19	17	17	17	17
20	17	17	17	17
21	17	17	17	17
22	17	17	17	17
23	17	17	17	17
24	17	17	17	17
25	17	17	17	17
26	17	17	17	17
27	17	17	17	17
28	17	17	17	17
29	17	17	17	17
30	17	17	17	17
31	17	17	17	17
32	17	17	17	17
33	17	17	17	17
34	17	17	17	17
35	17	17	17	17
36	17	17	17	17
37	17	17	17	17
38	17	17	17	17
39	17	17	17	17
40	17	17	17	17
41	17	17	17	17
42	17	17	17	17
43	17	17	17	17
44	17	17	17	17
45	17	17	17	17
46	17	17	17	17
47	17	17	17	17
48	17	17	17	17
49	17	17	17	17
50	17	17	17	17
51	17	17	17	17
52	17	17	17	17
53	17	17	17	17
54	17	17	17	17
55	17	17	17	17
56	17	17	17	17
57	17	17	17	17
58	17	17	17	17
59	17	17	17	17
60	17	17	17	17
61	17	17	17	17
62	17	17	17	17
63	17	17	17	17
64	17	17	17	17
65	17	17	17	17
66	17	17	17	17
67	17	17	17	17
68	17	17	17	17
69	17	17	17	17
70	17	17	17	17
71	17	17	17	17
72	17	17	17	17
73	17	17	17	17
74	17	17	17	17
75	17	17	17	17
76	17	17	17	17
77	17	17	17	17
78	17	17	17	17
79	17	17	17	17
80	17	17	17	17
81	17	17	17	17
82	17	17	17	17
83	17	17	17	17
84	17	17	17	17
85	17	17	17	17
86	17	17	17	17
87	17	17	17	17
88	17	17	17	17
89	17	17	17	17
90	17	17	17	17
91	17	17	17	17
92	17	17	17	17
93	17	17	17	17
94	17	17	17	17
95	17	17	17	17
96	17	17	17	17
97	17	17	17	17
98	17	17	17	17
99	17	17	17	17
100	17	17	17	17

Well Location

Well No.	1947	1948	1949	1950
1	17	17	17	17
2	17	17	17	17
3	17	17	17	17
4	17	17	17	17
5	17	17	17	17
6	17	17	17	17
7	17	17	17	17
8	17	17	17	17
9	17	17	17	17
10	17	17	17	17
11	17	17	17	17
12	17	17	17	17
13	17	17	17	17
14	17	17	17	17
15	17	17	17	17
16	17	17	17	17
17	17	17	17	17
18	17	17	17	17
19	17	17	17	17
20	17	17	17	17
21	17	17	17	17
22	17	17	17	17
23	17	17	17	17
24	17	17	17	17
25	17	17	17	17
26	17	17	17	17
27	17	17	17	17
28	17	17	17	17
29	17	17	17	17
30	17	17	17	17
31	17	17	17	17
32	17	17	17	17
33	17	17	17	17
34	17	17	17	17
35	17	17	17	17
36	17	17	17	17
37	17	17	17	17
38	17	17	17	17
39	17	17	17	17
40	17	17	17	17
41	17	17	17	17
42	17	17	17	17
43	17	17	17	17
44	17	17	17	17
45	17	17	17	17
46	17	17	17	17
47	17	17	17	17
48	17	17	17	17
49	17	17	17	17
50	17	17	17	17
51	17	17	17	17
52	17	17	17	17
53	17	17	17	17
54	17	17	17	17
55	17	17	17	17
56	17	17	17	17
57	17	17	17	17
58	17	17	17	17
59	17	17	17	17
60	17	17	17	17
61	17	17	17	17
62	17	17	17	17
63	17	17	17	17
64	17	17	17	17
65	17	17	17	17
66	17	17	17	17
67	17	17	17	17
68	17	17	17	17
69	17	17	17	17
70	17	17	17	17
71	17	17	17	17
72	17	17	17	17
73	17	17	17	17
74	17	17	17	17
75	17	17	17	17
76	17	17	17	17
77	17	17	17	17
78	17	17	17	17
79	17	17	17	17
80	17	17	17	17
81	17	17	17	17
82	17	17	17	17
83	17	17	17	17
84	17	17	17	17
85	17	17	17	17
86	17	17	17	17
87	17	17	17	17
88	17	17	17	17
89	17	17	17	17
90	17	17	17	17
91	17	17	17	17
92	17	17	17	17
93	17	17	17	17
94	17	17	17	17
95	17	17	17	17
96	17	17	17	17
97	17	17	17	17
98	17	17	17	17
99	17	17	17	17
100	17	17	17	17

A young black bear was seen in the old well area, apparently killed by the bear, was caught by the bear and was taken to the well in Teton, Idaho.

Bear-Grizzly. August 18, nine adult grizzlies and two cubs were observed in the Gardiner Dump.  
August 22, four grizzly bear were observed visiting the Old Faithful Fire Cache.  
Grizzly bear have been observed and trapped in the Canyon and Otter Creek campgrounds.

Bison. On August 27, a herd of 70 was in the Lamar Valley.

Bobcat. A bobcat was seen on Nez Perce Creek on August 2. One was seen near the road six miles of Northeast Entrance on August 4.

Crane. Two sandhill cranes are in upper Hayden Valley, and nine were counted along Duck Creek on August 9.

Elk. The long-range wildlife management plan for Yellowstone National Park was completed in draft form during the month. Final recommendation was made for the removal of 1,660 animals this coming winter from the Northern Herd.

Geese. Canada geese were observed frequently in the Lamar Valley.

Mountain Lion. Two mountain lions were sighted in the Old Faithful area, one on August 15 on Fountain Flats and the other on the Lone Star Geyser road on August 25. A Park visitor reported observing a mountain lion near Canyon Junction.

#### Public Affairs

Publicity. On each Thursday the Yellowstone Weekly News was issued to keep employees, concessioners, and others currently informed of Park happenings.

Three press releases were issued: return of first millionth visitor; retirement of W. A. Olson; Director George E. Hartzog, Jr.'s visit.

Religious and Chapel Use. Services for all faiths were conducted during the month, as scheduled, throughout the Park.

Public Relations: Associate Superintendent Luis A. Gastelum wrote a Guest Editorial for the Billings Gazette on August 29. A copy is attached.

Chief Park Naturalist John M. Good presented a talk on "Conservation in the National Parks" to Dr. Dorf's class at Specimen Ridge on



Background. August 12, 1964, about 10:00 a.m., two men were  
observed in the downtown area.  
August 13, 1964, about 10:00 a.m., two men were observed in the  
downtown area. The men were wearing dark clothing and were  
driving a dark car. They were observed in the downtown area  
between 10:00 a.m. and 11:00 a.m.

Witness. On August 12, a witness at 70 West 1st Street, Dallas,  
Texas, reported that he saw two men in a dark car.

Investigation. A search was made of the Dallas Police Department files for  
reports of sightings of two men in a dark car in the downtown area.

Results. The search of the Dallas Police Department files for reports of  
sightings of two men in a dark car in the downtown area on August 12,  
1964, resulted in the following information:

Witness. The following witnesses were interviewed for information:  
Witness 1: A witness at 70 West 1st Street, Dallas, Texas, reported  
that he saw two men in a dark car on August 12, 1964, between 10:00  
a.m. and 11:00 a.m.

Investigation. The search of the Dallas Police Department files for reports of  
sightings of two men in a dark car in the downtown area on August 12,  
1964, resulted in the following information:

Witness. The following witnesses were interviewed for information:  
Witness 1: A witness at 70 West 1st Street, Dallas, Texas, reported  
that he saw two men in a dark car on August 12, 1964, between 10:00  
a.m. and 11:00 a.m.

### Witnesses

Witness 1. On August 12, 1964, the following witnesses were interviewed:  
Witness 1: A witness at 70 West 1st Street, Dallas, Texas, reported  
that he saw two men in a dark car on August 12, 1964, between 10:00  
a.m. and 11:00 a.m.

Witness 2. On August 12, 1964, the following witnesses were interviewed:  
Witness 2: A witness at 70 West 1st Street, Dallas, Texas, reported  
that he saw two men in a dark car on August 12, 1964, between 10:00  
a.m. and 11:00 a.m.

Witness 3. On August 12, 1964, the following witnesses were interviewed:  
Witness 3: A witness at 70 West 1st Street, Dallas, Texas, reported  
that he saw two men in a dark car on August 12, 1964, between 10:00  
a.m. and 11:00 a.m.

Witness 4. On August 12, 1964, the following witnesses were interviewed:  
Witness 4: A witness at 70 West 1st Street, Dallas, Texas, reported  
that he saw two men in a dark car on August 12, 1964, between 10:00  
a.m. and 11:00 a.m.

Witness 5. On August 12, 1964, the following witnesses were interviewed:  
Witness 5: A witness at 70 West 1st Street, Dallas, Texas, reported  
that he saw two men in a dark car on August 12, 1964, between 10:00  
a.m. and 11:00 a.m.

August 25. This was a group of 40 teachers studying with Dr. Dorf on a National Science Foundation grant this summer.

Contracts Awarded:

Paul R. Lee  
Bozeman, Montana

\$258,676

Construction of Boat  
Docks and related  
facilities, Grant  
Village.

Figure 11. This was a group of 40 students working with Mr. Day on a Research Project. The students were given this assignment.

CONSTRUCTED ANSWERS:

Paul E. Day  
Johanna, Montana  
\$250.00  
Construction of Road  
Books and Supplies  
Gasoline, Food  
Village.



YELLOWSTONE NATIONAL PARK

DESIGN AND CONSTRUCTION NARRATIVE

AUGUST 1964

Plans, Maps and Surveys: The following drawings were reviewed or approved as indicated:

Concessioner Working Drawing NP-YEL-8898-A, LP Gas Installation, Water Heater Addition, Fishing Bridge Cafeteria.

Revision of 8898 submitted as requested by Acting Regional Chief of Maintenance. Approved by Acting Regional Director 8/25 subject to comment.

Preliminary Drawing NP-YEL-6102, Employee Apartments, 12 units, Grant Village.

Comments submitted.

Preliminary Concessioner Drawing NP-YEL-8911, Laundromat and Shower Building, Old Faithful.

Approved by Acting Regional Director 8/21.

Concessioner Working Drawing NP-YEL-8912, Ice Plant and Storage, Lake Hotel.

Recommended by Acting Superintendent 8/21.

Concessioner Working Drawing NP-YEL-8913, LP Gas Cabin Heating, Canyon Village Cabin Areas.

Recommended by Acting Superintendent 8/20

Concessioner Working Drawing NP-YEL-8550, Employee Residence, Hamilton Stores, Inc., West Yellowstone.

Recommended by Acting Superintendent 8/17.

NP-YEL-2261, Interim Master Plan, Stevens Creek Area, Sheet 2 recommended by Regional Director to show location of Job Corps Camp.

Bids Opened:

August 11: Boat Docks and Related Facilities, Grant Village.  
Four bids received. Intend to award to Paul Lee, Bozeman, Montana, \$258,676.00

August 18: Campground Obliteration, Topsoiling, Planting, Selective Thinning and Seeding, Fishing Bridge Trailer Village, West Thumb, and Grant Village.  
Two bids received. Nelson Bros. Construction Company, Salt Lake City, Utah, low @ \$58,278.00. Schedules A and C to be awarded (omitting West Thumb), for \$49,964.

THE NATIONAL ANTHROPOLOGICAL ARCHIVES

RECEIVED BY THE NATIONAL ANTHROPOLOGICAL ARCHIVES

1911

THE FOLLOWING LIST OF ARTIFACTS WAS RECEIVED BY THE NATIONAL ANTHROPOLOGICAL ARCHIVES

ARTIFACTS RECEIVED BY THE NATIONAL ANTHROPOLOGICAL ARCHIVES  
FROM THE NATIONAL ANTHROPOLOGICAL ARCHIVES  
ARTIFACTS RECEIVED BY THE NATIONAL ANTHROPOLOGICAL ARCHIVES  
FROM THE NATIONAL ANTHROPOLOGICAL ARCHIVES

ARTIFACTS RECEIVED BY THE NATIONAL ANTHROPOLOGICAL ARCHIVES  
FROM THE NATIONAL ANTHROPOLOGICAL ARCHIVES

ARTIFACTS RECEIVED BY THE NATIONAL ANTHROPOLOGICAL ARCHIVES  
FROM THE NATIONAL ANTHROPOLOGICAL ARCHIVES

ARTIFACTS RECEIVED BY THE NATIONAL ANTHROPOLOGICAL ARCHIVES  
FROM THE NATIONAL ANTHROPOLOGICAL ARCHIVES

ARTIFACTS RECEIVED BY THE NATIONAL ANTHROPOLOGICAL ARCHIVES  
FROM THE NATIONAL ANTHROPOLOGICAL ARCHIVES

ARTIFACTS RECEIVED BY THE NATIONAL ANTHROPOLOGICAL ARCHIVES  
FROM THE NATIONAL ANTHROPOLOGICAL ARCHIVES

ARTIFACTS RECEIVED BY THE NATIONAL ANTHROPOLOGICAL ARCHIVES  
FROM THE NATIONAL ANTHROPOLOGICAL ARCHIVES

ARTIFACTS RECEIVED BY THE NATIONAL ANTHROPOLOGICAL ARCHIVES

ARTIFACTS RECEIVED BY THE NATIONAL ANTHROPOLOGICAL ARCHIVES  
FROM THE NATIONAL ANTHROPOLOGICAL ARCHIVES

ARTIFACTS RECEIVED BY THE NATIONAL ANTHROPOLOGICAL ARCHIVES  
FROM THE NATIONAL ANTHROPOLOGICAL ARCHIVES

ARTIFACTS RECEIVED BY THE NATIONAL ANTHROPOLOGICAL ARCHIVES  
FROM THE NATIONAL ANTHROPOLOGICAL ARCHIVES

WASO approval of contract 14-10-0243-592 with Cave Construction, Inc. for Roads, Parking, Walks and Drives at various locations in the Park (\$246,265.94) was received.

Notice to Proceed:

Effective August 17, 1964 - Cave Construction, contract 14-10-0243-592, Roads.

August 17, 1964 - Western Service Contractors, contract 14-10-0243-593, Utilities.

Prefinal Inspection: Project 8, Reconstruction, Northeast Entrance Road and Bridge Approaches, Yellowstone River Bridge through Lamar Canyon - contract WPS-WASO-YELL-7-63/12, Long. Punchlist prepared. Final inspection scheduled for August 28, 1964.

Final Inspection:

July 29: BPR project FLIP 15(1), Beartooth Highway - construction of bridges and approaches at Fox and Index Creeks and installation of approximately 25,000 lineal feet of guardrail - accepted and final payment recommended.

July 30: Water System Improvements (Water Reservoir No. 2), Lake Area, contract 14-10-0243-478, Borgen. Project found complete with exception of minor items listed by Project Inspector, which must be corrected before acceptance is made. It was also recommended that final acceptance be withheld until the system was put into operation by the contractor, which was done by Borgen and his mechanical man August 3.

August 19: Interiors of Five Employee Residences, Mammoth, Floyd Rathway, Schedule I of contract 14-10-0243-540. Accepted (Interiors inspected and accepted March 4, 1964).

There was an on-site inspection of Norris Junction centerline August 17.

A route review of a portion of the Beartooth Highway is scheduled for August 26 with representatives of BPR and the Forest Service - to determine balance of work to be done with funds remaining after reconstruction of Crazy Creek and Clark Fork bridges.

The Superintendent and the Programs Officer met with U. S. Forest Service Regional Forester and Staff, Missoula, to discuss the Master Plan for Yellowstone National Park, August 14.

The Master Plan Study Team (Messers. Stratton, Hendrix, Garrison, Hill, Flynn, Allen and Olson) is meeting in Yellowstone August 24, 25 and 26.

Ralph Thornally, Mechanical and Electrical Engineer, was in the Park August 2-5 to make investigations and determinations regarding heating and air conditioning problems at Canyon Visitor Center and Mammoth Clinic.



1. The first step in the process of developing a business plan is to conduct a thorough market research. This involves identifying the target market, understanding the needs and preferences of the customers, and analyzing the competitive landscape. Market research can be conducted through various methods, including surveys, interviews, focus groups, and secondary research.

© 1999 by The American Psychological Association  
0893-3200/99/\$12.00 DOI: 10.1037/0893-3200.13.4.555

1997-1998, 1998-1999, 1999-2000, 2000-2001, 2001-2002, 2002-2003, 2003-2004, 2004-2005, 2005-2006, 2006-2007, 2007-2008, 2008-2009, 2009-2010, 2010-2011, 2011-2012, 2012-2013, 2013-2014, 2014-2015, 2015-2016, 2016-2017, 2017-2018, 2018-2019, 2019-2020, 2020-2021, 2021-2022, 2022-2023, 2023-2024, 2024-2025, 2025-2026, 2026-2027, 2027-2028, 2028-2029, 2029-2030, 2030-2031, 2031-2032, 2032-2033, 2033-2034, 2034-2035, 2035-2036, 2036-2037, 2037-2038, 2038-2039, 2039-2040, 2040-2041, 2041-2042, 2042-2043, 2043-2044, 2044-2045, 2045-2046, 2046-2047, 2047-2048, 2048-2049, 2049-2050, 2050-2051, 2051-2052, 2052-2053, 2053-2054, 2054-2055, 2055-2056, 2056-2057, 2057-2058, 2058-2059, 2059-2060, 2060-2061, 2061-2062, 2062-2063, 2063-2064, 2064-2065, 2065-2066, 2066-2067, 2067-2068, 2068-2069, 2069-2070, 2070-2071, 2071-2072, 2072-2073, 2073-2074, 2074-2075, 2075-2076, 2076-2077, 2077-2078, 2078-2079, 2079-2080, 2080-2081, 2081-2082, 2082-2083, 2083-2084, 2084-2085, 2085-2086, 2086-2087, 2087-2088, 2088-2089, 2089-2090, 2090-2091, 2091-2092, 2092-2093, 2093-2094, 2094-2095, 2095-2096, 2096-2097, 2097-2098, 2098-2099, 2099-2100, 2100-2101, 2101-2102, 2102-2103, 2103-2104, 2104-2105, 2105-2106, 2106-2107, 2107-2108, 2108-2109, 2109-2110, 2110-2111, 2111-2112, 2112-2113, 2113-2114, 2114-2115, 2115-2116, 2116-2117, 2117-2118, 2118-2119, 2119-2120, 2120-2121, 2121-2122, 2122-2123, 2123-2124, 2124-2125, 2125-2126, 2126-2127, 2127-2128, 2128-2129, 2129-2130, 2130-2131, 2131-2132, 2132-2133, 2133-2134, 2134-2135, 2135-2136, 2136-2137, 2137-2138, 2138-2139, 2139-2140, 2140-2141, 2141-2142, 2142-2143, 2143-2144, 2144-2145, 2145-2146, 2146-2147, 2147-2148, 2148-2149, 2149-2150, 2150-2151, 2151-2152, 2152-2153, 2153-2154, 2154-2155, 2155-2156, 2156-2157, 2157-2158, 2158-2159, 2159-2160, 2160-2161, 2161-2162, 2162-2163, 2163-2164, 2164-2165, 2165-2166, 2166-2167, 2167-2168, 2168-2169, 2169-2170, 2170-2171, 2171-2172, 2172-2173, 2173-2174, 2174-2175, 2175-2176, 2176-2177, 2177-2178, 2178-2179, 2179-2180, 2180-2181, 2181-2182, 2182-2183, 2183-2184, 2184-2185, 2185-2186, 2186-2187, 2187-2188, 2188-2189, 2189-2190, 2190-2191, 2191-2192, 2192-2193, 2193-2194, 2194-2195, 2195-2196, 2196-2197, 2197-2198, 2198-2199, 2199-2200, 2200-2201, 2201-2202, 2202-2203, 2203-2204, 2204-2205, 2205-2206, 2206-2207, 2207-2208, 2208-2209, 2209-2210, 2210-2211, 2211-2212, 2212-2213, 2213-2214, 2214-2215, 2215-2216, 2216-2217, 2217-2218, 2218-2219, 2219-2220, 2220-2221, 2221-2222, 2222-2223, 2223-2224, 2224-2225, 2225-2226, 2226-2227, 2227-2228, 2228-2229, 2229-2230, 2230-2231, 2231-2232, 2232-2233, 2233-2234, 2234-2235, 2235-2236, 2236-2237, 2237-2238, 2238-2239, 2239-2240, 2240-2241, 2241-2242, 2242-2243, 2243-2244, 2244-2245, 2245-2246, 2246-2247, 2247-2248, 2248-2249, 2249-2250, 2250-2251, 2251-2252, 2252-2253, 2253-2254, 2254-2255, 2255-2256, 2256-2257, 2257-2258, 2258-2259, 2259-2260, 2260-2261, 2261-2262, 2262-2263, 2263-2264, 2264-2265, 2265-2266, 2266-2267, 2267-2268, 2268-2269, 2269-2270, 2270-2271, 2271-2272, 2272-2273, 2273-2274, 2274-2275, 2275-2276, 2276-2277, 2277-2278, 2278-2279, 2279-2280, 2280-2281, 2281-2282, 2282-2283, 2283-2284, 2284-2285, 2285-2286, 2286-2287, 2287-2288, 2288-2289, 2289-2290, 2290-2291, 2291-2292, 2292-2293, 2293-2294, 2294-2295, 2295-2296, 2296-2297, 2297-2298, 2298-2299, 2299-2300, 2300-2301, 2301-2302, 2302-2303, 2303-2304, 2304-2305, 2305-2306, 2306-2307, 2307-2308, 2308-2309, 2309-2310, 2310-2311, 2311-2312, 2312-2313, 2313-2314, 2314-2315, 2315-2316, 2316-2317, 2317-2318, 2318-2319, 2319-2320, 2320-2321, 2321-2322, 2322-2323, 2323-2324, 2324-2325, 2325-2326, 2326-2327, 2327-2328, 2328-2329, 2329-2330, 2330-2331, 2331-2332, 2332-2333, 2333-2334, 2334-2335, 2335-2336, 2336-2337, 2337-2338, 2338-2339, 2339-2340, 2340-2341, 2341-2342, 2342-2343, 2343-2344, 2344-2345, 2345-2346, 2346-2347, 2347-2348, 2348-2349, 2349-2350, 2350-2351, 2351-2352, 2352-2353, 2353-2354, 2354-2355, 2355-2356, 2356-2357, 2357-2358, 2358-2359, 2359-2360, 2360-2361, 2361-2362, 2362-2363, 2363-2364, 2364-2365, 2365-2366, 2366-2367, 2367-2368, 2368-2369, 23

WDC Supervisory Landscape Architect Eaclawski was here to review staked line, Route 8, with BPR Engineers and Park personnel, also to review the major road program.

Dou Schworer of the Office of the Solicitor, Department of Labor, was in the Park August 10-11 to check on rates actually paid on construction projects.

August 21 Adrian Malone, contract architect, reviewed Grant Village Visitor Center plans with Staff members prior to revising plans to come within funds available.

Orval Graham of Orr Pickering and Associates was in the Park regarding the drainage difficulties at Canyon Village.

John S. McLaughlin

Intriplicate

cc  
Midwest Regional Director  
Management Assistant  
✓Library  
File  
HTracy:pl

© 2002 Blackwell Science Ltd, *Journal of Internal Medicine* 252: 355–362

and, finally, in a separate, individual cell for further use in research and  
 -and in the future, perhaps, in the development of new, more effective  
 -and, finally, in a separate, individual cell for further use in research and

THESE RESULTS WERE OBTAINED BY USING THE FOLLOWING DATA:

7. Integral 20.5.100

[illegible]





### THREE YELLOWSTONE SUPERINTENDENTS

Three of the six Superintendents of Yellowstone National Park since the National Park Service took control over the Park in 1916 are shown above.

L. to R. Edmund B. Rogers, now retired, who was Superintendent from 1936 to 1956

John S. McLaughlin, the present Superintendent

Horace M. Albright, Superintendent, 1919-1929, and

Director of the National Park Service from 1929-1933.

Messrs. Albright and Rogers were in Yellowstone August 26 to September 4 in connection with a Staffing Study being made for the Park.

NPS Photo



THE UNIVERSITY OF CHICAGO  
LIBRARY  
1215 EAST 58TH STREET  
CHICAGO, ILL. 60637  
TEL. 733-4331  
1968



Dr. and Mrs. Paul Raber  
Decatur, Illinois

Dr. Raber and his bride of three weeks were greeted as the Millionth Visitor, the first time in history that Park visitation reached that count in September 1948.

On August 7, 1964, sixteen years later, they revisited the Park with their family and were greeted by Superintendent John S. McLaughlin.

L. to R. Dr. Raber, Martha Jane, 14; Mary Gail, 13;  
John, 10; Mrs. Raber; and Superintendent McLaughlin

NPS Photo







Japanese National Park Study Team  
visited Yellowstone, August 1-4

This group was headed by Mr. Hata and Mr. Ohi, third and fourth from the left.

Shushiro Hata, Chief of Economic Dept., Iwate,	Prefunctional Government
Michio Ohi, Chief, Landscape-Architect,	
Planning Section, National Park Division	
Masanobu Nagashima, Chief, Landscape-Architect,	
Tourist Section, Tochigi,	" "
Keizo Sasakura, Chief, Landscape-Architect,	
Tourist Section, Toyama,	" "
Tokunosuke Tsuchiya, Chief, Landscape-Architect,	
Tourist Section, Kagawa,	" "







Mr. William A. Olson, was presented with a Commendable Service Award on August 28 by Associate Superintendent Gastellum. Mr. Olson, a painter, retired after more than 22 years service at Yellowstone. Mr. and Mrs. Olson were presented lifetime passes to all areas administered by the National Park Service. Retirement: August 15.

Mr. David Harvey Lyons was presented a Commendable Service Award August 28 by Associate Superintendent Gastellum. Mr. Lyons retired for disability July 1 after over nine years of service at Yellowstone. Mr. Lyons and Mrs. Lyons were presented lifetime passes to all areas administered by the National Park Service.



THE  
OFFICE OF THE  
SECRETARY OF THE  
NAVY  
WASHINGTON, D. C.  
JANUARY 10, 1900

TO THE  
HONORABLE  
THE SECRETARY OF THE  
NAVY  
WASHINGTON, D. C.  
JANUARY 10, 1900



Mr. and Mrs. Harvey B. Reynolds were presented a Scotty Chapman painting August 28, at Coffee. Associate Superintendent Luis A. Gastellum made the presentation.



Mr. Sture T. Carlson, Branch of Park Protection, Washington, D. C. who was here officially, and Associate Superintendent Gastellum at Headquarters.







THE DIRECTOR IN YELLOWSTONE

Director George B. Hartzog, Jr., greets Yellowstone National Park employees after interesting and informative talk given to employees at headquarters, Mammoth, August 20.  
At left is Midwest Regional Director, Lemuel A. Garrison.

NPS PHOTO





# Area Yellowstone National Park

CHECK BELOW THE PROJECT USED:

☒ BUILDINGS AND UTILITIES

☐ NPS ROADS AND TRAILS

☐ BPR ROADS AND TRAILS

REPORT FOR (Month and year)

August 1964

F. Y. PRO-GRAM	WORK ORDER NUMBER, LOCATION WITHIN AREA, AND PROJECT TITLE	PCP NO.	DRAWING NO	AMOUNT ALLOTTED AND DATES	CONSTRUCTION			REMARKS AND CONSTRUCTION AGENCY: (D & C, (R), OR (A)
					COR-TRACT (C) OR DL	ESTIMATED DATE STARTING COMPLETION	% COM-LETE	
1	3	3	4	5	6	7	8	9
1960	B-58-YEL (331.46) Hospital, Dormi- tory & Physicians' Duplex, Lake	B-356 B-357 B-370	3819A 3742A 3743A 2695 1/64 6013 9/63	442885.26	C  DL	8/1961 9/1964	99	D&C Contract No. 14-10-0243-429, Julien Construction Co., Cody, Wyo. \$363,847. 100%  P Equipment \$12,787.26. Fuel oil & gas \$1,346.63. Furniture & equip- ment \$9,750. Hospital furniture & equipment \$20,866.14. Office furniture \$676.50. P.O. Big Horn Electric \$300. Pathological in- cinerator \$4,350.  D&C Landscaping \$2,500.00. 100%
1963	B-94-YEL - Clinic Bldg. incl. Equipment & Heated Ambulance Storage, Mammoth	B-373	3837A	88325.95	C	4/1963 9/1964	98	D&C Contract 14-10-0243-488, Floyd Hathaway, Chester, Ida. \$77,232. 100%  D&C Dental equip. \$4,036.65. Clinic equipment & furniture \$6,175.  P Fuel \$270
1964	B-107-YEL - Rehab. Structures Transferred from Bureau of Sport Fisheries & Wildlife at Lake A. Fish Traps B. Rehab. Bunkhouse C. Remodel Office, Bldg. 725 D. Acquisition & Placing Two Transahomes E. Rehab. Garage F. Rehab. Residence	B-395-1	2685 3919 2142	45656.80	DL	8/1963 9/1964	68	\$15,901.86 100% 7,296.57 100% 5,200.00 100%  4,258.43 65% 3,600.00 -0- 9,400.00 -0-



CHECK BELOW THE PROJECT USED:

☒ BUILDINGS AND UTILITIES☐ NFS ROADS AND TRAILS☐ BPR ROADS AND TRAILS

REPORT FOR (Month and year)

**August 1964**

F. Y. PRO-GRAM	WORK ORDER NUMBER, LOCATION WITHIN AREA, AND PROJECT TITLE	POP NO.	DRAWING NO.	AMOUNT ALLOTTED AND DATES	CONSTRUCTION			REMARKS AND CONSTRUCTION AGENCY: (D & C), (R), OR (A)
					COM-TRACT (C) OR DL	ESTIMATED DATE STARTING COMPLETION	% COM- PLETE	
1964	B-109-YEL - Employee Residences (5) 3-bedroom, Mammoth	B-393-1	6010	88144.79	C	10/1963 8/1964	100	D&C Contract 14-10-0243-540, Floyd Hathaway, Chester, Idaho. \$186,423.00. This portion \$81,248.85. Final inspection & acceptance 8/19/64
1964	B-110-YEL - Comfort Stations (8) with utility connections, Canyon	B-350-1	3949	71592.05	C	10/1963 10/1964	70	P Electric ranges \$804.25; fire extinguishers \$88; refrigerators \$754.00; curtain rods, shades & clotheslines \$407.69. 100%
1964	B-111-YEL - Comfort Stations (4) Fishing Bridge Trailer Village	B-399	6005	33267.60	C	10/1963 11/1964	36	D&C Contract 14-10-0243-540, Floyd Hathaway, Chester, Ida. \$186,423. This por. \$69,907.05
1964	B-115-YEL - Employee Housing, 8-unit apartment, Grant Village	B-199-3	6011A 8/63	63251.19	C	6/1964 11/1964	60	D&C Contract 14-10-0243-548, Elliott Construction, Riverton, Wyoming. \$79,800. This por. \$62,940.
1964	B-116-YEL - Wash House, Employee Trailer Court, Grant Village	B-318-2	6006 7/63	16987.00	C	6/1964 11/1964	65	D&C Contract 14-10-0243-548, Elliott Construction, Riverton, Wyoming. \$79,800. This por. \$16,987.00.





Area Yellowstone National Park

CHECK BELOW THE PROJECT USED:

☒ BUILDINGS AND UTILITIES☐ NPS ROADS AND TRAILS☐ BPR ROADS AND TRAILS

REPORT FOR (Month and year)

August 1964

3

F. Y. PRO- GRAM	1	WORK ORDER NUMBER, LOCATION WITHIN AREA, AND PROJECT TITLE	2	PCP NO.	DRAWING NO.	AMOUNT ALLOTTED AND DATES	CONSTRUCTION			REMARKS AND CONSTRUCTION AGENCY: (D & C), (R), OR (A)
							CON- TRACT (C) OR DL	ESTIMATED DATE STARTING COMPLETION	% COM- PLETE	
1964		B-120-YEL - Concessioner Facilities B-450 (incl. Concessioner Sales Bldg., Boat Repair & Rental Bldg., 1½T Hoist, Clock House & Floating Fuel Dock), Bridge Bay	3		6104 6049 6105 6/64	96,165.00	C	5/1964 6/1965	14	D&C Floating Fuel Dock - Contract 14-10-0243-593, Western Service Contractors, Powell, Wyo. \$67,030.80 This por. \$15,190.00. Notice to Proceed 8/17/64
1964		B-122-YEL - Employee Residences (5) 3-bedroom, Mammoth		B-430	6043 4/64	89,505.00	C	7/1964 1/1965	10	Concessioner Sales Bldg., Contr. 14-10-0243-587, Martel & Lee, Bozeman, Montana, \$79,985. 25%  P P. O. Hathaway, Clock House \$990 100%
1965		B-123-YEL - Comfort Stations with Utility Connections, Grant Village Campground		B-419	6038 4/64	20,235.00	C	7/1964 1/1965	20	D&C Contract No. 14-10-0243-588, Floyd Hathaway, Chester, Ida. \$109,435 (This por. \$89,200)
1964		B-124-YEL - Laundry & Showers - Office & Qtrs. Bldg., Fishing Br.		B-400 B-398	6029 5/64	88,763.00	C	7/1964 1/1965	4	D&C Contract No. 14-10-0243-589, Floyd Hathaway, Chester, Idaho Notice to Proceed 7/27/64
1964		Visitor Center incl. Audio-visual & Exhibits, P. O. & Dispensary, Grant Village		B-376	6012		C			D&C To be readvertised this Fall. Plan to be revised
1963		Terminal Bldg., Utilities, Land- scaping, etc. W. Yellowstone Airport W. Yellowstone, Montana								Mont. Aeronautics Com. Contracts to Diteaman (Bozeman, Mont.), Fullerton's Plumbing & Heating (Hamilton), Van Dyken Drilling (Bozeman) & Bozeman Electric





Area Yellowstone National Park

4

CHECK BELOW THE PROJECT USED

☒ BUILDINGS AND UTILITIES☐ NFS ROADS AND TRAILS☐ BPR ROADS AND TRAILS

REPORT FOR (Month and year)

August 1964

F. Y. PRO- GRAM	WORK ORDER NUMBER, LOCATION WITHIN AREA, AND PROJECT TITLE	POP NO	DRAWING NO	AMOUNT ALLOTTED AND DATES	CONSTRUCTION			REMARKS AND CONSTRUCTION AGENCY: (D & C), (R), OR (A)
					CON- TRACT (C) OR DL	ESTIMATED DATE STARTING COMPLETION	% COM- PLETE	
1		3	4	5	6	7	8	
1965	Ranger Patrol Station, Marina Area Grant Village	B-414-1			Cq			D&C
1965	Utility and Storage Building, Grant Village	B-317			C			D&C
1965	Employee Apartments, 12 units Grant Village	B-405-1	6102 7/64		C			D&C
1965	Boat Patrol Station, Grant Village	B-418			C			D&C
1965	Entrance Station, East Entrance	B-390			C			D&C
1962	B-48-YEL (332.50), Water & Sewer Dock Area, Bridge Bay	U-213 U-213-2	3310 6042 3/64	186992.79	C	6/1961 9/1964	99	D&C Contract 14-10-0243-420, Budd Plumbing & Heating, Bozeman, Mont. \$52,977, sewage treatment, 100%  Contract 14-10-0243-421, Studer Constr., Billings, Mont. water & sewer, \$126,510. 100%  Bridge Creek Well No. 1 - 14-10- 0243-532, Paul Vollmer & Son, Aberdeen, Idaho, \$2,098.95. 100%  D&C P.O. Budd - Insulate standpipes etc. \$250.70.  P.O. Lee-fallout sewer \$1,995  P Hose houses & equip. \$1,996.50. 100%  Pump, line & controls \$6,900.85%



CHECK BELOW THE PROJECT USED

☒ BUILDINGS AND UTILITIES☐ NPS ROADS AND TRAILS☐ BPR ROADS AND TRAILS

REPORT FOR (Month and year)

August 1964

F. Y. PRO- GRAM	WORK ORDER NUMBER, LOCATION WITHIN AREA, AND PROJECT TITLE	PCP NO	DRAWING NO	AMOUNT ALLOTTED AND DATES	CON- TRACT (C) OR DL	CONSTRUCTION		REMARKS AND CONSTRUCTION AGENCY: (D & C), (R), OR (A)
						ESTIMATED DATE STARTING COMPLETION	% COM- PLETE	
1	2	3	4	5	6	7	8	
1963	B-72-YEL (332.57) Water Reservoir No. 2, Lake	U-184-1	3844 5/62	207192.63	C	7/1962 9/1964	99	D&C Contract No. 14-10-0243-478, Borgan Constr. Co., Billings, Mont., \$189,209.86.
1964	B-104-YEL, Construct Utility Ext. & Distrib., Govt. Area, Employees Tr. Ct. & Marina, Grant Village	U-228-2	6003A 5/63	184557.85	C	8/1963 9/1964	90	F Payments to Yellowstone Park Co. for line in place \$4,000.00  D&C Hartwell Excavating, Ida. Falls Ida., contract 14-10-0243-534, \$183,663.85.
1964	B-105-YEL, Water & Sewer Ext. & Connections, Fishing Bridge Trailer Village	U-233 U-234	3946 6109 6/63 5/64	204929.02	C	8/1963 1/1965	90	D&C Contract 14-10-0243-536, Cave Constr., Inc., Great Falls, Mont. \$392,202.83. (This por. 195,857.0 95% Lift station, W. & S. connections Contract 14-10-0243-593, Western Service Contractors \$67,030.80 (this por. \$9,072) Notice to Proceed 8/17/63
1964	B-106-YEL, Electrical Distribution & Service, Fishing Bridge Trailer Village	U-233	3946 6/63	37221.21	C	8/1963 9/1964	90	D&C Contract 14-10-0243-536, Cave Constr., Inc., Great Falls, Mont. \$392,202.83. This por. \$37,221.21.





CHECK BELOW THE PROJECT USED:

☒ BUILDINGS AND UTILITIES☐ NPS ROADS AND TRAILS☐ BPR ROADS AND TRAILS

REPORT FOR (Month and year)

**August 1964**

6

F. Y. PRO- GRAM	WORK ORDER NUMBER, LOCATION WITHIN AREA, AND PROJECT TITLE	PCP NO.	DRAWING NO.	AMOUNT ALLOTTED AND DATES	CONSTRUCTION			REMARKS AND CONSTRUCTION AGENCY: (D & C), (R), OR (A)
					CON- TRACT (C) OR DL	ESTIMATED DATE STARTING COMPLETION	% COM- PLETE	
1	2	3	4	5	6	7	8	9
1964	B-113-YEL, Rehabilitation of Buildings & Utilities (Por.) A. Rehab. of Bunkhouse to Research Center Lab, Lamar Ranger Sta. B. Utilities C. Acquisition and placing four transahomes D. Grounds Improvement & Oblitera- tion of Old Buildings	U-232	958 2690B 8/63 3/64	74,666.00	DL	10/1963 8/1964	81	\$26,166.00 - 92% \$35,000.00 - 65% \$8,600.00 - 85% \$4,900.00 - 90% Program Adjustment
1964	B-119-YEL, Utilities to Serve Con- cessioner Laundry & Shower Bldg. Old Faithful	U-260		7,450.00	DL	9/1964 10/1964	-0-	
1965	B-125-YEL - Trailer Sanitary Dump Stations, Park General	U-246	6108 6/64	22,025.80	C	7/1964 1/1965	5	D&C Contract No. 14-10-0243-593 Western Services Contractors, Powell, Wyo., \$67,030.80 (This por. \$15,025.80). Notice to Proceed 8/17/64
1964	B-126-YEL - Water Valves & Meters Lake	U-247	6040 3/64	27,743.00	C	7/1964 1/1965	5	P Site preparation \$7,000.00 D&C Contract No. 14-10-0243-593, Western Service Contractors, Powell, Wyo. \$67,030.80 (This por. \$27,743). Notice to Proceed 8/17/63
1964	Utilities to Serve Concessioner Laundry & Shower Bldg., Fishing Bridge Trailer Village							

Official Record of the Court  
 (To be filled in by the Court)

Case No.	Date	Plaintiff's Name			Defendant's Name	Amount	Court	Remarks	Judge
		First Name	Middle Name	Last Name					
100-100	1-1-70	John	Robert	Smith	John	100.00	U.S. District Court	Case No. 100-100	100-100
100-101	1-1-70	John	Robert	Smith	John	100.00	U.S. District Court	Case No. 100-101	100-101
100-102	1-1-70	John	Robert	Smith	John	100.00	U.S. District Court	Case No. 100-102	100-102
100-103	1-1-70	John	Robert	Smith	John	100.00	U.S. District Court	Case No. 100-103	100-103
100-104	1-1-70	John	Robert	Smith	John	100.00	U.S. District Court	Case No. 100-104	100-104
100-105	1-1-70	John	Robert	Smith	John	100.00	U.S. District Court	Case No. 100-105	100-105
100-106	1-1-70	John	Robert	Smith	John	100.00	U.S. District Court	Case No. 100-106	100-106
100-107	1-1-70	John	Robert	Smith	John	100.00	U.S. District Court	Case No. 100-107	100-107
100-108	1-1-70	John	Robert	Smith	John	100.00	U.S. District Court	Case No. 100-108	100-108
100-109	1-1-70	John	Robert	Smith	John	100.00	U.S. District Court	Case No. 100-109	100-109
100-110	1-1-70	John	Robert	Smith	John	100.00	U.S. District Court	Case No. 100-110	100-110



CHECK BELOW THE PROJECT USED:

☒ BUILDINGS AND UTILITIES☐ NPS ROADS AND TRAILS☐ BPR ROADS AND TRAILS

REPORT FOR (Month and year)

August 1964

F. Y. PRO- GRAM	WORK ORDER NUMBER, LOCATION WITHIN AREA, AND PROJECT TITLE	PCP NO.	DRAWING NO.	CONSTRUCTION				REMARKS AND CONSTRUCTION AGENCY: (D & C), (R), OR (A)
				AMOUNT ALLOTTED AND DATES	CON- TRACT (C) OR DL	ESTIMATED DATE STARTING COMPLETION	% COM- PLETE	
1964	B-101-YEL, Tables, Fireplaces, Refuse Containers & Site Prepara- tion, Canyon Campground	N-106	3395-4	27,200.00	DL	7/1963 8/1964	98	P
1964	B-103-YEL, Picnic Area Facilities (Tables, Refuse Containers & Misc.) Park General (Arnica Cr., Dunraven Pass - 2, & Crescent Hill)	N-146	3435	6,600.00	DL	7/1963 9/1964	95	P
1964	B-108-YEL, Marina Dredging & Bulk- heading, Grant Village	N-149	3737A 6/63	538002.06	C	8/1963 9/1964	93	D&C Contract 14-10-0243-535, Cave Constr., Inc., Great Falls, Mont. \$445,511.56.
1964	B-114-YEL - Grounds Improvement & Site Protection for School Res. Area & Medical Clinic, Mammoth	N-115-1	6030	23876.13	C	10/1963 10/1964	81	D&C Contract 14-10-0243-545, Gray Landscaping, Ida. Falls \$4367.50 Grading & Topsoiling. 100%
					DL			Contract 14-10-0243-578, Vaughn Landscaping & Tree Service, Twin Falls, Ida. \$16,330.25. Seeding & Planting. 100%
1965	B-121-YEL - Picnic Area Facilities Tables, Fireplaces, Refuse Con- tainers, Misc., Park General	N-141	3435	10,500.00	DL	7/1965 6/1965	15	P Maintenance by Park crews \$2,000
1965	Boat Docks & Related Facilities Grant Village	N-145	6111 6/64		C			D&C Bids opened 8/11/64. Intend award Paul Lee, Bozeman, Mont. \$258,676.00



CHECK BELOW THE PROJECT USED:

☒ BUILDINGS AND UTILITIES☐ NPS ROADS AND TRAILS☐ BPR ROADS AND TRAILS

REPORT FOR (Month and year)

August 1964

F. Y. PRO- GRAM	1	WORK ORDER NUMBER, LOCATION WITHIN AREA, AND PROJECT TITLE	PCP NO.	DRAWING NO.	AMOUNT ALLOTTED AND DATES	CONSTRUCTION			REMARKS AND CONSTRUCTION AGENCY: (D & C), (R), OR (A)
						CON- TRACT (C) OR DL	ESTIMATED DATE STARTING COMPLETION	% COM- PLETE	
1965		Grounds Improvement & Site Restoration (Por.), Grant Village	M-143	6044A 3/64		C			D&C Bids opened 8/18/64
1965		Obliterate Campground & Site Restoration, West Thumb	M-128	6106 5/64		C			D&C Bids opened 8/18/64
1965		Topsoiling, Seeding and Planting Fishing Bridge Trailer Village	M-147	6041A 3/64		C			D&C Bids opened 8/18/64
1965		Amphitheater, Grant Village 750 capacity, incl. audio-visual	M-111-2	6037B 6/64		C			D&C Bids to be opened Sept. 22/64
1965		Grounds Improvement & Site Pro- tection, Mammoth	M-144						





CHECK BELOW THE PROJECT USED:

☐ BUILDINGS AND UTILITIES☒ NPS ROADS AND TRAILS☐ BPR ROADS AND TRAILS

REPORT FOR (Month and year)

August 1964

F. Y. PRO-GRAM	WORK ORDER NUMBER, LOCATION WITHIN AREA, AND PROJECT TITLE	PCP NO.	DRAWING NO	AMOUNT ALLOTTED AND DATES	CONSTRUCTION			REMARKS AND CONSTRUCTION AGENCY: (D & C), (R), OR (A)
					COM-TRACT (C) OR DL	ESTIMATED DATE STARTING COMPLETION	% COM- PLETE	
1	2	3	4	5	6	7	8	
1963	West Yellowstone Airport - Runways Taxi Strips, Aprons, Service Roads, W. Yellowstone, Montana	R-348			C	5/1963 9/1964		Handled by Mont. Aeronautics Com. Robt. V. Burgraf Co., Inc., Ida. Falls, Ida., \$920,485.12
1964	R-65-YEL, Construct Roads, Picnic Areas, Dunraven Pass, Old Dunraven Road & Cascade Meadows, Park Gen.	R-353	2689 8/63	20,000	DL	8/1963 9/1964	95	P
1964	R-66-YEL, Construct Rds. & Parking Grade, Drain, Base, Bitum. Surface Curbs, Barriers & Signs, Fishing Bridge Trailer Village	R-352	6008 5/63	168186.60	C	8/1963 9/1964	95	D&C Contract 14-10-0243-536, Cave Constr., Inc., Great Falls, Mont \$392,202.83 (This por. 159,124.60)
1964	R-67-YEL, Reconstruct Roads and Parking, Lamar Ranger Station	R-355		8,000.00	DL	10/1963 9/1964	75	P
1964	R-68-YEL, Access Road, Parking Areas & Walks to Serve Concessioner Shower & Laundry Bldg., Old Faithful	R-418	8911	5,160.00	DL	9/1964 10/1964		P Program Adjustment
1964	Access Road, Parking Area & Walks to Serve Concessioner Shower & Laundry Bldg., Fishing Bridge Trailer Village							Program Adjustment
1965	R-69-YEL, Trails & Walks, Grant Village	R-357	2600 6/64	33,200.00	DL	7/1964 6/1964	40	P
1965	R-70-YEL, Roads, Picnic Areas (8 Areas), Park General	R-372	2601 6/64	54,400.00	DL	7/1964 6/1965	10	P





CHECK BELOW THE PROJECT USED:

☐ BUILDINGS AND UTILITIES☒ NPS ROADS AND TRAILS☐ BPR ROADS AND TRAILS

REPORT FOR (Month and year)

August 1964

REMARKS AND CONSTRUCTION AGENCY:  
(D & C), (R), OR (A)

F. Y. PRO- GRAM	WORK ORDER NUMBER, LOCATION WITHIN AREA, AND PROJECT TITLE	PCP NO.	DRAWING NO.	AMOUNT ALLOTTED AND DATES	CONSTRUCTION			REMARKS AND CONSTRUCTION AGENCY: (D & C), (R), OR (A)
					CON- TRACT (C) OR DL	ESTIMATED DATE STARTING COMPLETION	% COM- PLETE	
1	2	3	4	5	6	7	8	
1965	R-71-YEL, Reconstruct Trail Bridges at Grand and Castle Geysera, Park General	R-316-1	2683 2684 7/63	35,500.00	DL	7/1964 6/1965	15	P
1965	R-72-YEL, Roads and Drives, Employee Residences, Mammoth	R-360	2602 6/64	4,000.00	DL	7/1964 9/1964	80	P
1965	R-73-YEL, Parking Areas, Grand Loop, Park General	R-377	3696 6/64	15,400.00	DL	7/1964 6/1965	20	P
1965	R-74-YEL, Roads & Parking, Utility Area, Base, Surface, Curbs & Barriers, Grant Village	R-359-1	6100 6110 4/64	136,623.59	C	8/1964 12/1964	-0-	D&C Contract 14-10-0243-592, Cave Constr., Inc., Great Falls, Mont. \$246,266.04 (this por. 136623.59) Notice to Proceed 8/17/64
1965	R-75-YEL, Campground Roads (compl.) Dust Palliative & Barriers Pelican Creek	R-375	6103 4/64	32,710.04	C	8/1964 12/1964	5	D&C Contract 14-10-0243-592, Cave Constr., Inc., Great Falls, Mont. \$246,266.04 (this por. 32710.04) Notice to Proceed 8/17/64
1965	R-76-YEL, Roads & Parking (compl.) Marina Area, Bridge Bay	R-384	6048 4/64	24,750.91	C	8/1964 12/1964	-0-	D&C Contract 14-10-0243-592, Cave Constr., Inc., Great Falls, Mont. \$246,266.04 (this por. 24750.91) Notice to Proceed 8/17/64
1965	R-77-YEL, Rehab. Lodge Cabin Area Old Faithful	R-332	6046 4/64	30,652.30	C	8/1964 12/1964	-0-	D&C Contract 14-10-0243-592, Cave Constr., Inc., Great Falls, Mont. \$246,266.04 (this por. 30,652.20) Notice to Proceed 8/17/64
1965	R-78-YEL, Resurface Employee Tr. Court & Access Rd., Rte. 230, 2.9 miles, Old Faithful	R-323	6046 4/64	21,529.20	C	8/1964 12/1964	-0-	D&C Contract 14-10-0243-592, Cave Constr., Inc., Great Falls, Mont. \$246,266.04 (this por. 21529.20) Notice to Proceed 8/17/64

APRIL 1914

1914

1914

1914

1914

1914

1914

1914

1914

1914

1914

1914

1914

1914

1914

1914

1914

1914

1914

1914

1914

1914

1914

1914

1914

1914

1914

1914

1914

1914

1914

1914

1914

1914

1914

1914

1914

1914

1914

1914

1914

1914

1914

1914

1914

1914

1914

1914

1914

1914

1914

1914

1914

1914

1914

1914

1914

1914

1914

1914

1914

1914

1914

1914

1914

1914

1914

1914

1914

1914

1914

1914

1914

1914

1914

1914

1914

1914

1914

1914

1914

1914

1914

1914

1914

1914

1914

1914

1914

1914

1914

1914

1914

1914

1914

1914

1914

1914

1914

1914

1914

1914

1914

1914

1914

1914

1914

1914

1914

1914

1914

CHECK BELOW THE PROJECT USED:

☐ BUILDINGS AND UTILITIES☒ NPS ROADS AND TRAILS☐ BPR ROADS AND TRAILS

REPORT FOR (Month and year)

**August 1964**

F. Y. PRO- GRAM	WORK ORDER NUMBER, LOCATION WITHIN AREA, AND PROJECT TITLE	PCP NO.	DRAWING NO.	AMOUNT ALLOTTED AND DATES	CONSTRUCTION			REMARKS AND CONSTRUCTION AGENCY: (D & C), (R), OR (A)
					CON- TRACT (C) OR DL	ESTIMATED DATE STARTING COMPLETION	% COM- PLETE	
1	2	3	4	5	6	7	8	
1965	Trails, Paths and Walks, Bridge Bay	R-361			DL			P Plans by WODC
1965	Commercial Parking Area, Clearing and Grubbing, Fishing Bridge	R-376						



IN SENATE

JANUARY 1887

REPORT OF THE COMMISSIONERS OF THE LAND OFFICE

1886

STATE OF NEW YORK

COMMISSIONERS OF THE LAND OFFICE

1886

STATE OF NEW YORK

1886

COMMISSIONERS OF THE LAND OFFICE

1886

REPORT OF THE COMMISSIONERS OF THE LAND OFFICE

1886

1886

COMMISSIONERS OF THE LAND OFFICE

1886

1886

COMMISSIONERS OF THE LAND OFFICE

1886

1886

COMMISSIONERS OF THE LAND OFFICE

1886

1886

COMMISSIONERS OF THE LAND OFFICE

1886

1886

COMMISSIONERS OF THE LAND OFFICE

1886

1886

COMMISSIONERS OF THE LAND OFFICE

1886

1886

COMMISSIONERS OF THE LAND OFFICE

1886

1886

COMMISSIONERS OF THE LAND OFFICE

1886

CHECK BELOW THE PROJECT USED:			REPORT FOR (Month and year)		August 1964				
BUILDINGS AND UTILITIES			BPR ROADS AND TRAILS						
WORK ORDER NUMBER, LOCATION WITHIN AREA, AND PROJECT TITLE			PCP NO.	DRAWING NO.	AMOUNT ALLOTTED AND DATES	CONSTRUCTION	ESTIMATED DATE STARTING COMPLETION	% COM PLETE	REMARKS AND CONSTRUCTION AGENCY: (D & C), (R), OR (A)
F. Y. PRO-GRAM	1	2	3	4	5	6	7	8	
1961	R-39-YEL (521.13) Grand Loop, Rte. 1E, Arnica Creek - Bridge Bay Grade & Base Surface 9.1 mi.	R-55-3	4	886697.70	C	7/1961 8/1964	98	D&C Contract 14-10-0100-1242, Long Constr. Co., Billings, Mont. \$779,110.88. 100%	
					DL			P \$5,000, striping & signing. 95%	
1961	R-46-YEL (521.15) Norris to Canyon Grade & Base Surface 8.4 miles Route 12 (por.) and 2 Bridges	R-62-6		787243.31	C	10/1961 8/1964	96	D&C Contract 14-10-0100-1201, Taggar Constr. Co., Cody, Wyo. \$734,674 100%	
					DL			P Striping & striping \$2,000. 90%	
1963	R-53-YEL (521.17), Grand Loop, Ne-locate Road at Beryl Springs	R-343		161813.59	C	10/1962 9/1964	98	D&C COP Constr. Co., Billings, Mont. \$163,935. NPS-WASO-YEL-V-62/36. 100%	
			6045		DL			P U. S. Geologist \$2,911.47 Striping & signing \$500 Fencing \$1,806.58. 95%	
1963	R-56-YEL - Reconstruction, North-east Entrance Road & Bridge Approaches, Yellowstone River Bridge thru Lamar Canyon (Proj. 8)	R-240-1		239722.00	C	7/1963 9/1964	83	D&C Contract NPS-WASO-YEL-V-63/12, Long Constr., Billings, Mont. \$222,222.00. 95%. Prefinal 8/21 Seeding & mulching \$13,500.00	
					DL			P Striping & signing \$2,000.00	

Field Notes

Date: 10/10/50

Location: [illegible]

Time: 10:00 AM

Observer: [illegible]

1. [illegible]

2. [illegible]

3. [illegible]

4. [illegible]

5. [illegible]

6. [illegible]

7. [illegible]

8. [illegible]

9. [illegible]

10. [illegible]

11. [illegible]

12. [illegible]

13. [illegible]

14. [illegible]

15. [illegible]

16. [illegible]

17. [illegible]

18. [illegible]

19. [illegible]

20. [illegible]

21. [illegible]

22. [illegible]

23. [illegible]

24. [illegible]

25. [illegible]

26. [illegible]

27. [illegible]

28. [illegible]

29. [illegible]

30. [illegible]

31. [illegible]

32. [illegible]

33. [illegible]

34. [illegible]

35. [illegible]

36. [illegible]

37. [illegible]

38. [illegible]

39. [illegible]

40. [illegible]

41. [illegible]

42. [illegible]

43. [illegible]

44. [illegible]

45. [illegible]

46. [illegible]

47. [illegible]

48. [illegible]

49. [illegible]

50. [illegible]

51. [illegible]

52. [illegible]

53. [illegible]

54. [illegible]

55. [illegible]

56. [illegible]

57. [illegible]

58. [illegible]

59. [illegible]

60. [illegible]

61. [illegible]

62. [illegible]

63. [illegible]

64. [illegible]

65. [illegible]

66. [illegible]

67. [illegible]

68. [illegible]

69. [illegible]

70. [illegible]

71. [illegible]

72. [illegible]

73. [illegible]

74. [illegible]

75. [illegible]

76. [illegible]

77. [illegible]

78. [illegible]

79. [illegible]

80. [illegible]

81. [illegible]

82. [illegible]

83. [illegible]

84. [illegible]

85. [illegible]

86. [illegible]

87. [illegible]

88. [illegible]

89. [illegible]

90. [illegible]



CHECK BELOW THE PROJECT USED:

☐ BUILDINGS AND UTILITIES☐ NPS ROADS AND TRAILS☒ BPR ROADS AND TRAILS

REPORT FOR (Month and year)

August 1964

13

F. Y. PRO- GRAM	WORK ORDER NUMBER, LOCATION WITHIN AREA, AND PROJECT TITLE	PCP NO.	DRAWING NO.	AMOUNT ALLOTTED AND DATES	CONSTRUCTION			REMARKS AND CONSTRUCTION AGENCY: (D & C), (R), OR (A)
					CON- TRACT (C) OR DL	ESTIMATED DATE STARTING COMPLETION	% COM- PLETE	
1	2	3	4	5	6	7	8	
1963	Reconstruction, Red Lodge - Cooke City Road (Por.), Montana	R-344			C			BPR and State of Montana; funds carried over.
1965	Reconstruct Red Lodge - Cooke City Approach Road (Por.), Montana	R-410			C			BPR and State of Montana
1964	Reconstruction, Route 5, East Entrance to Parking Area, 6 mi., Base, Bitum. Surface & Shoulders (incl. Relocation of East Entrance Station Road)	R-309-1			C			D&C All bids rejected. To be readvertised in September.
1965	Norris By-pass & Parking Area & Relocate Norris Jct., 3.5 mi.; & Reconstruct Road from Norris By-pass to Gibbon R. Bridge, 2.5 mi., Route 1B & Route 12	R-310-1			C			D&C
1965	Reconstruct Road & Parking Areas, Chittenden Bridge to Artist Point, Route 160, 1.6 miles, Base and Bituminous Surface	R-341-1			C			D&C

Notes

Notes on the ...

Notes on the ...

Notes on the ...

Notes on the ...

Notes on the ...

Notes on the ...

Notes on the ...

Notes on the ...

Notes on the ...

Notes on the ...

Notes on the ...

Notes on the ...

Notes on the ...

Notes on the ...

Notes on the ...

Notes on the ...

Notes on the ...

Notes on the ...

Notes on the ...

Notes on the ...

Notes on the ...

Notes on the ...

# MONTHLY PROGRESS REPORT

Area Big Hole National Battlefield

CHECK BELOW THE PROJECT USED:

☒ BUILDINGS AND UTILITIES

☐ NPS ROADS AND TRAILS

☐ BPR ROADS AND TRAILS

REPORT FOR (Month and year)

August 1964

F. Y. PRO-GRAM	WORK ORDER NUMBER, LOCATION WITHIN AREA, AND PROJECT TITLE	POP NO.	DRAWING NO.	CONSTRUCTION			REMARKS AND CONSTRUCTION AGENCY: (D & C), (R), OR (A)
				AMOUNT ALLOTTED AND DATES	COM. TRACT (C) OR DL	ESTIMATED DATE STARTING COMPLETION	
1965	Utility System (Por.), Water and Sewer (Drill Well, Install Pumps, Distribution Lines and Sewage System)	U-1-4	4		C		D&C Deferred pending acquisition of land





# For the Pioneer Honor Roll

## Yellowstone Park Development Promoted by Early Montanans

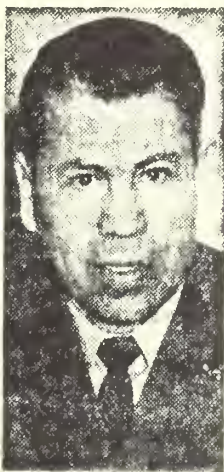
### A Guest Editorial

By **LUIS A. GASTELLUM**

Associate Park Superintendent, Yellowstone National Park

To the long list of celebrated personages who are being honored during Montana's Territorial Centennial, I would like to add a group of Montana citizens whose far-sightedness and energy in the pursuit of an idea have since enriched the experience of millions of people.

One of the most significant ideas in America's social history was nurtured and brought to realization by these Montana Territory men, members of the 1870 expedition to the Yellowstone area. That idea, of course, is what we today call



L. A. GASTELLUM

"The National Park Idea." This idea boldly announced a new philosophy of land use that went against the grain of the American experience. It declared that there were some scenic natural resources that should be preserved for all of the people rather than be exploited

by a few. It is perhaps appropriate that the names of many of these men are now all but forgotten, memorialized only in a few instances by landmarks which bear their names. For these men renounced personal riches and certain fame and sought instead to bring "to the notice of the world" what they "believed to be the greatest wonders of the continent."

\* \* \* \* \*

**BUT IF THESE PIONEERS** were extraordinary in their vision, it is even more remarkable how much support their idea got from the ordinary citizens of the Territory. Although Congress did establish Yellowstone as a national park in 1872, it neglected to give financial support to administer or protect the area properly. In recognition of this need, on Nov. 27, 1873, Montana Territorial Gov. B. F. Potts wrote the following message to the first nominal park superintendent





think national pride should also  
Congress to make a liberal ap-  
portion to employ a resident super-  
intendent of the park, and make such  
as are necessary, and preserve  
spoilation the numberless curiosi-  
ties of that wonderful region. The park  
beauty of scenery and national curi-  
osities eclipses anything the world con-  
fesses of which man has any knowledge."

The governor's letter was soon fol-  
lowed by a memorial from the enlight-  
ened citizens of Bozeman, who appar-  
ently had by now recognized the value  
of this fledgling park. A group of 70  
citizens from Bozeman petitioned the  
legislature for an appropriation to pre-  
vent the vandalism that is rapidly  
destroying the park of its curiosities,  
spoiling off and killing its game, and  
bringing it a disappointment to all  
who desire to see this grand do-  
mained in a state of nature."

\*\*\*  
TODAY, IN AN AGE OF surging  
population growth, expanding leisure  
and sprawling urbanization, and an  
increasing industrialization of our  
land, it is easy to recognize the im-  
portance of natural park values. But  
the vision it must have taken in the  
past to appreciate "natural values"  
in a nature all but swallowed up these  
years when the wilderness daily posed  
a threat to the uninitiated, when the pri-  
mary business of the day was to "civi-  
lize" the West. One can only speculate  
on the influences that motivated these

early settlers to protect the hostile  
wilderness.

Many of them, of course, were fresh  
from the East and knew firsthand the  
crippling effects, both physical and  
spiritual, of industrialization and urban-  
ization. Others undoubtedly were pre-  
pared for a new attitude toward nature  
by such literary men as Emerson, Thor-  
eau and Lowell. But I would like to  
think that the wonders of Yellowstone  
itself worked a transformation on these  
men, that these men were made con-  
verts to a new philosophy wrought by  
the "solemn grandeur of the scene  
which surpasses conception."

\*\*\*

**THE QUALITY OF VISION** of these  
early citizens can be measured in part  
by the fact that there were few models  
to follow in this new use of lands.  
Theirs was the first attempt to involve  
the federal government in administer-  
ing a conservation program for the  
benefit of all its citizens. Their actions  
predated the establishment of the for-  
est preserves by about 19 years. Coin-  
cidentally, the first forest reserve was  
the Yellowstone Forest Reserve, estab-  
lished by presidential proclamation on  
March 30, 1891. This first forest re-  
serve was patrolled by troops of the  
Fort Yellowstone garrison, and at pres-  
ent is known as the Shoshone National  
Forest near Cody, Wyo. The first fed-  
eral wildlife refuges (other than those  
included in National Parks) were not  
set aside until the turn of the century.

\*\*\*

**STRANGELY ENOUGH, THE** fruits  
of the selfless attitude of these high-  
principled men have produced a mate-  
rial prosperity in the surrounding area  
far greater than any personal exploita-  
tion could have realized. Today, be-  
cause of resources that have been pre-  
served rather than exploited, Yellow-  
stone and its natural local area off-  
springs, Glacier and Grand Teton Na-  
tional Parks and Custer and Big Hole

Yellowstone are the center of a tourist  
industry that yearly dwarfs the estimat-  
ed \$100,000,000 strike at Alder Gulch.  
And unlike the gold supply of Alder  
Gulch, which is now exhausted, these  
great scenic and historical resources in-  
crease in value with each passing year.  
However, these values must be jealously  
guarded. We need a wisdom equal to  
that of those early men. We must find  
the judicious balance between present  
use and future preservation. For just  
as the unspoiled lakes, mountains, and  
forests are symbolic of our attitude to-  
ward the past, so too, in a very real  
sense, they represent our stake in the  
future.

\*\*\*

**TODAY, THE NATIONAL PARK**  
idea has indeed been brought "to the  
notice of the world." The idea which  
took root in Montana soil produced not  
only a variety of national parks in our  
own country, but it has been adapted  
to the preservation needs of over 70  
foreign nations. But if the idea has be-  
come world reknown, the men who fos-  
tered it have been almost forgotten at  
home. In this Centennial year, let us  
add to the list of distinguished Montana  
Territory men the names of the mem-  
bers of the Washburn-Langford-Doane  
Expedition. These included Henry D.  
Washburn, surveyor-general of public  
lands for the Montana Territory; Sam-  
uel T. Hauser, president of the First  
National Bank of Helena; Warren C.  
Gillette, pioneer merchant from Ban-  
nock, Virginia City and Helena; Nathan-  
iel P. Langford, collector of internal  
revenue; Truman C. Everts, former as-  
sessor of internal revenue for Montana  
Territory; Asster Trumbull, an assist-  
ant to Everts; Benjamin F. Stickney, a  
miner and logger; and Jacob Smith  
of the Montana Hide and Fur Company.

