



BULLETIN

Volume 7: No. 4

Cultural Resources Management • A National Park Service Technical Bulletin

December 1984

Presenting The Truth About The Past

Theodore Anton Sande

There are, it seems to me, four broad areas of concern under which to consider the fundamental purpose of historic site preservation. They are: 1) continuity, 2) integrity, 3) plausibility, and 4) meaning. Not mutually exclusive categories by any means, they represent four different ways of approaching the same important issue of historic preservation.

Continuity

By continuity, I mean the will and the ability of a society to assure that it retains its memory. We do so in many ways, of course, by the rites and customs we observe, the written records we keep and, for those of us in historic preservation, the way we maintain the continuity of our civilization's history through the conservation and preservation of its physical evidence.

In practical terms there are two things to keep in mind. The first is the extent to which we choose to

reflect the different periods of occupancy at a historic property. Should each prior resident receive equal treatment? If not, why? For example, at Lawnfield in Mentor, Ohio, the original owner is overshadowed by President Garfield and his family. Should this be so? Is it really possible, desirable or reasonable to interpret Lawnfield in a way that would give the Dickey family a larger place in our region's collective memory?

The second consideration is more difficult to come to grips with. To what extent does the organization or agency that controls a historic property at any particular time become a part of the texture of continuity? It would be impossible for it not to be caught up in the process of a site's history, but to what degree does a property steward become a part of a historic site's history? And, to what extent do we in the present have an

continued on page 2

RESTORING THE LINCOLN HOME INTERIOR: AN INTERDISCIPLINARY APPROACH

George L. Painter

In early 1861, Abraham Lincoln was preparing to leave Springfield, Illinois, for his inauguration. As part of these preparations, he rented out the only home he had ever owned, where he and his family had resided for seventeen years. He also sold most of the furniture from the house.

As the decades rolled on, tenants occupying the home brought in new furniture; the original Lincoln furnishings became widely dispersed. In 1887, Lincoln's oldest son, Robert, donated the home to the State of Illinois. While the public was able to view the first floor, the custodian used the second floor as an apartment. The wallpaper was changed and much of the interior took on a very different appearance than it had during the Lincoln's residence.

The alternations created the need for restoration. The first floor underwent gradual treatment during the first half of the twentieth century. In the early 1950s, the Illinois Department of Conservation undertook restoration of both the first and second floors. The house came under the administration of the National Park Service in 1972, when the Lincoln Home National Historic Site was officially established. During recent years, the National Park Service has begun to reexamine the Home interior in the light of new advances in the fields of history, historic architecture, archaeology, historic wallpaper, and furnishings. These disciplines have joined to further elucidate the evidence discovered during the 1950s, as well as to uncover new sources. By these means, the Historic Site is seeking to recapture the appearance of the home as the Lincolns knew it in 1860.



Exterior view of Lawnfield.

Photo: Elroy Sanford

continued on page 2

There are a number of reasons for choosing 1860 as a restoration goal. The Lincolns had enlarged their home in 1856; therefore, any attempt to portray the interior before that date would be impractical. Furthermore, 1860 was the most historically significant year of the family's residence, when Lincoln was nominated and elected to the Presidency. Finally, Lincoln received a great deal of public attention as a candidate and President-Elect, resulting in more abundance documentation for 1860 and early 1861 than for any other period of his years in the Home.

Frank Leslie's Illustrated Newspaper, for example, published engravings of the front parlor, rear parlor, and sitting room on March 9, 1861. The newspaper's artist sketched the rooms while the Lincoln family was still in residence. Since these are the only illustrations of the interior before 1865, they are unique, invaluable sources for the present restoration project.

The *Leslie's Illustrated* engravings provided background for an Historic Furnishings Plan, which was completed in 1983. The drawings helped to authenticate some of the Lincoln-associated furnishings in the Site museum collection. For instance, a set of six side chairs at the site are accompanied by very strong documentation of their association with the Lincoln family and home. Five side chairs of identical design appear in the *Leslie's* drawings of the front and rear parlors. Similarly, the collection contains a sewing table and a mirror with gilt frame which are also highly documented. They strongly resemble the furnishings seen on the right in the *Leslie's* sketch of the sitting room. Thus, the *Leslie's* illustrations and the written history of the artifacts support each other.

Research in written historical sources has shed additional light on the furnishings depicted in the sketches. For example, a bust of Mr. Lincoln appears in the drawing of the front parlor, on the top shelf of the whatnot. The site displays a reproduction of the original statue on that location. In the December 1881 issue of *Century Magazine*, sculptor Leonard Volk described how the bust came to be in the home. During March of 1860, Volk invited Mr. Lincoln to visit his sculpture studio in Chicago, where Lincoln underwent the uncomfortable exper-

continued on page 4

obligation to future generations to remain detached from the historical evidence to retain its validity?

Integrity

John Ruskin, in *The Seven Lamps of Architecture*, argues the merits of carefully tending, but not restoring, old buildings. This attitude came quickly to be labelled by its opponents as the "antiscrape school." By standards of practice today, Ruskin was certainly more conservative than most contemporary historic preservationists.

However, I think it would be unwise to dismiss his position without first understanding his major concern.

Ruskin was deeply troubled over what he saw as an all-too-prevalent tendency to restore old buildings to their presumed original configuration. He questioned the end result—for very good reason. He knew that most restoration involves a great deal of conjecture, and that is equally true today, despite the use of current scientific techniques of physical analysis. And, he knew, that the end result had to be a compromise, since the original fabric had to be in some way altered by the restoration process. Thus, no matter how accurate one's research or how faithful one's restoring of a building's physical appearance, in the end, it would be different from the original; and for Ruskin this meant a loss of historical integrity.

For historic sites, in general, we may enlarge Ruskin's position by ask-

ing two questions that have to do with integrity:

- 1) How much of a site's history are we able to tell?
- 2) How much of a site's history do we choose to tell?

The first has to do with the limits of knowledge of a site and involves the extent to which it is documented or physically accessible. For Lawnfield, there exists excellent archival evidence and a remarkably comprehensive understanding of the buildings and other improvements to these properties. However, that is not typical.

The second question depends upon the first and brings out the issue of discrimination. It is entirely possible, based upon the written and graphic material available and the physical evidence, to interpret a site in different ways. One generation may think it comes close to selecting the most important facet of a site's history to interpret. But another generation may decide to shift the emphasis. What is the historical "truth" and can that "truth" ever be detached from the historian's platform, one's own ear and its preconceptions and prejudices about the past?

Plausibility

If continuity and integrity seem to be preoccupations for the historic preservation professional, the third category, plausibility, brings the professional into a closer relationship to the house museum and historic site visitor. Where continuity and integrity involve intellectual considerations, plausibility introduces the emotional side of the historic site experience.



Lawnfield

Drawing: Scott Duenow, HABS.

FIRST WORLD CONFERENCE ON CULTURAL PARKS: THE PLACE, THE PEOPLE, THE EVENTS

Douglas L. Caldwell

They numbered more than 170 and came from 31 nations. Many had come to the United States before, but relatively few had visited Mesa Verde National Park. They represented government agencies, ministries and legislatures, universities, local planning authorities, the travel industry, economic development planners, private business involved in preservation

planning and development, national and international organizations concerned with the preservation of cultural properties, Australian and Central American aboriginal groups, Native Americans, and the U.S. National Park Service. All were anxious to share their experiences in managing and preserving cultural properties in

continued on page 8

limitation of our human existence that we can only simulate the surface of the past and that we are forever prevented from reaching a deeper understanding through the presentation of its artifacts and places.

Meaning

For the visitor to historic property, meaning is the sum total of the experience gained from the physical evidence of a site or museum, measured against the mythos of contemporary civilization. In *Discovering The Present*, Harold Rosenberg included a 1958 essay titled: "Roadside Arcadia." In his words, "The small town is the stage set of the American Dream. . . the village of the American Dream preserves the warm heart and extended hand of pioneer caravans and of settlements on the edge of the world. . . The order of the small town sustains the freedom of the uprooted individual while restoring his heritage of basic human sentiments." These qualities seem present in many of our open-air museums and historic villages.

How much does a visitor fantasize about these relationships when strolling a historic village lane, leaning on a fence watching the sheep graze or standing beside a blacksmith as he hammers out an iron implement? What are the hopes, dreams, the satisfactions that such sites nurture in those who are embraced by its presence? And, how well do we understand these motivations and desires?

I don't want to suggest to you that meaning, in the broad cultural sense, is confined to or even best expressed through the open-air museum or historic village. A similar line of reasoning can be developed for the Lawnfield

property, taking as another facet of the American mythos that of the Horatio Alger legend; here we have Garfield, the poor boy who, through hard work, bravery and native intelligence, rises above his circumstances to achieve the highest elected office of his country. We Americans seem fascinated with biography, and presidential sites are the physical counterpart of this longstanding literary tradition.

Conclusion

To summarize, these four considerations may help us to better understand what we are doing in preserving and presenting America's material culture at historic sites and in historic house museums. Continuity is the realization of the sequence of events in fact that have transformed a property over time. Integrity is the measured valuing of these events and their physical evidence so as to achieve historical truth. Plausibility reaches beyond the factual basis and intellectual understanding, and attempts to meld them with an emotional certitude that raises the visitor's experiential level to a heightened realization of the past. And meaning goes beyond the fact, truth, and experience of a site to place these components into a cultural unity locked into the deepest forces that shape a civilization. ©

The author is the Executive Director of the Western Reserve Historical Society in Cleveland, Ohio. His article was condensed from remarks delivered at the April 12, 1984 NPS Workshop on Historic Structures, and concentrated on the preservation of Lawnfield, and the Hale Farm and Western Reserve Village, both properties of The Western Reserve Historical Society.

ience of having a plaster cast made of his face. Volk utilized the cast to create a bust of the future President. In the magazine article, the sculptor recounted his visit to the Lincoln Home on May 8, 1860, when he presented to Mrs. Lincoln a small bust of her husband:

I was invited into the parlor and soon Mrs. Lincoln entered holding a rose bouquet in her hand, which she presented to me after the introduction; and in return I gave her a cabinet size bust of her husband, which I had modelled from the large one.

The *Leslie's Illustrated* engravings served as an important guide for the selection and arrangement of furnishings in the front parlor, rear parlor, and sitting room. The Furnishings Plan investigated a wide variety of additional sources which guided the furnishing of other rooms. These included contemporary written accounts, evidence of the 1861 sale of Lincoln furniture, photographs from 1865 and later, surviving original furnishings, records of furniture now missing, and Springfield account books which listed purchases by the Lincoln family. On December 31, 1846, for instance,

Mrs. Lincoln purchased a copy of *The House Book* by Eliza Leslie. This popular work revealed the housekeeping practices of the period with which Mrs. Lincoln would have been familiar. The 65 artifacts in the collection with a documented Lincoln association as well as the other types of evidence mentioned above provided many insights into the tastes of Mrs. Lincoln and the way she would have furnished her home.

As part of its reexamination of the Lincoln Home interior, the National Park Service requested specialists to prepare an historic wallpaper study, completed in December of 1983. Most of the wallpaper patterns presently displayed were selected in the 1950s, when very few documented reproductions were available and the techniques of research in this field were not highly developed. Subsequently, reproductions of documented period papers have been produced in much larger numbers. In addition, the application of microscopy and chemical tests has augmented the technology available for the investigation of historic wallpapers.

The *Leslie's Illustrated* engraving of the sitting room depicted wallpaper with a botanical design. In the case of the front and rear parlors, on the other hand, the wallpaper study illustrates how the application of new historical information can correct the misinterpretations of the past. In the

1950s' restoration, plain vertical stripe wallpaper was hung in the front and rear parlors because the *Leslie's* drawings of these rooms showed parallel lines on the walls. The wallpaper study, however, drawing on more recent historical findings, observed that such design was not typical of the 1850s, but rather of the period from 1820 to 1840. The lines in the *Leslie's* sketches run across the ceilings, as well as down the walls; it is now clear that it was not a practice in any period to apply striped papers to ceilings. Most likely, therefore, the lines were the artist's shading, rather than a depiction of the wallpaper pattern. A photograph taken in about 1865, showing botanical and floral motifs, seems to offer a better guide for papering the parlors as Mary Lincoln would have done.

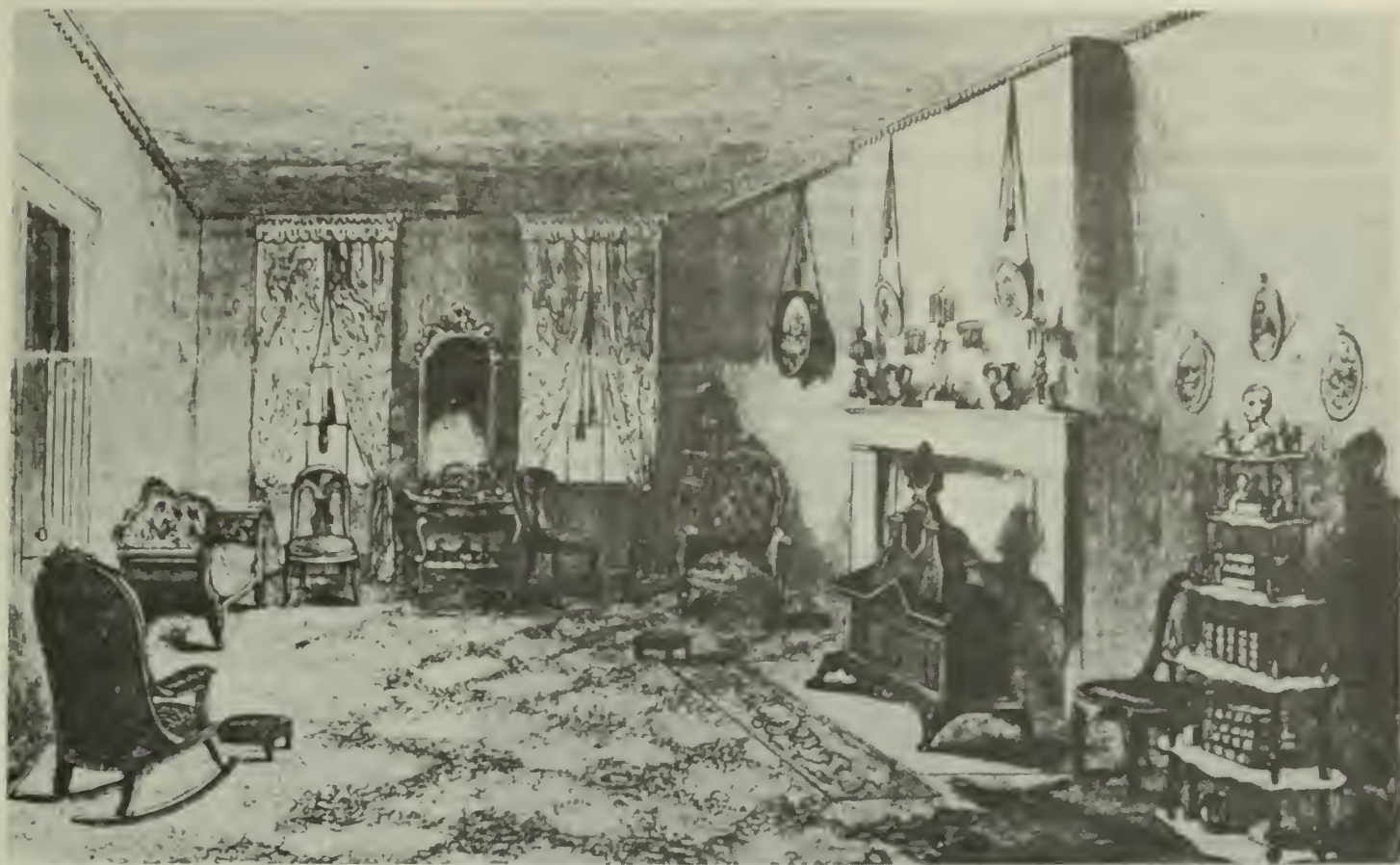
Abraham Lincoln's bedroom has on its south wall a large area of old wallpaper, considered original to the late 1850s. The wallpaper study, by utilizing new knowledge and methodology, found strong evidence that the paper is, indeed, original. Chemical tests place it in the correct period of wood pulp manufacture. The inks were block printed, consistent with the techniques of that era. The paper emphasizes colors which a recent and authoritative study identified as characteristic of American wallpapers in the 1850s. Close examination of the paper discovered a small graffito: "Bessie, June 13, 1875." Written sources reveal that Bessie was one of the daughters of George Harlow, who rented the house from 1870 to 1880. Since there is no record of Harlow or the previous renters repapering the walls, it appears very likely that the wallpaper has been in place since the time of Lincoln.

The original wallpaper in Mr. Lincoln's bedroom reveals a great deal about the types of paper Mrs. Lincoln may have chosen for other rooms. It was probably of French manufacture. Since the paper was embossed as well as block printed, it was undoubtedly expensive. The pattern emphasizes botanical motifs, which agrees with photographic evidence from 1865 and later for other parts of the house, including the front and rear parlors. By disclosing the tastes of Mrs. Lincoln, the wallpaper study thus complements the findings of the Historic Furnishings Plan.



The Lincoln Home exterior as it appears today.

continued on page 13



Engraving of the Lincoln Home Front Parlor which was published on March 9, 1861, in "Frank Leslie's Illustrated Newspaper".



In large measure, the restoration of the Lincoln Home Front Parlor is based on the "Leslie's Illustrated engraving".

ADAPTIVE USE: The Superintendents' Residence at Grand Canyon National Park

Billy Garrett

Treatment and management of a federally owned historic property in a national park can be problematic if the property is unsuitable for current Service needs, if it is unrelated to the major themes of the park, and if it is of less than national significance. Such conditions developed with a property at Grand Canyon. So the park undertook a leasing project which revamped the structure to serve as executive offices for a concessioner.

about one mile east of the house. The circulation system inside the park was also modified. As a result, the Superintendents' Residence became gradually isolated from other Service-used facilities. No longer on the edge of the settlement, the house now overlooks a complex intersection of roads connecting the historic village with modern areas of development.

Erected in 1921 to serve as the first administrative center for the park, the west end of the building contains two

a kitchen and breakfast nook, a living room, entry hall, laundry and a family room.

The Superintendents' Residence was entered on the National Register of Historic Places in 1974 for its long association with the administrative history of the park. More recently, the significance of the property has been enhanced by its identification as one of the major projects undertaken by the NPS Landscape Engineering Division during the formative period of park "rustic" architecture. Typical of many buildings designed in this style, the bottom story of the Superintendents' Residence is composed of native stone laid up in an uncoursed manner. Upper level walls are board and batten in some areas and rough sawn horizontal siding in others. Plastered walls, wood floors and simple rectangular trim characterize the interior.

Historically and architecturally, the most significant space in the house is the lower level area initially used for interpretation and later as the family room. Special features include a multi-level flagstone floor, grained wood ceiling, hand hewn beams and columns, bracket supported lights, a large stone fireplace, and a plank door with a hand carved latch. Distinctive features elsewhere in the house include fireplaces in both the living and dining rooms, and curtain rods of wrought iron. A steam radiator system, which was tied to a fuel oil fired boiler, heated the building.



Superintendents' Residence, now offices for the Fred Harvey Co.

Property Description

The Superintendent's Residence is a frame and masonry structure of rustic character located at the base of a low, south-facing ridge. During the ten-year period that encompassed its construction, the building was situated at the perimeter of Grand Canyon Village. To the rear of the house, overlooking Grand Canyon, were tourist facilities built by the Santa Fe Railroad and the Verkamp family; to the west was the village center (the depot, post office and store, ranger offices, power plant and barns); to the south was the village residential area.

In 1929, a large structure was erected in front of the house. This facility now houses a public garage and concessioner offices. During the 1960s, a new center for park administration and visitor service was built

stories—each with two rooms. Upper level rooms originally functioned as offices, lower level rooms as storage and interpretive facilities. In 1931, the structure more than doubled in size as it was modified for domestic use.

After completion of the addition, total habitable floor area was 3,505 square feet, divided into three bedrooms, three bathrooms, maid quarters,



Closeup of a light fixture.

Uses and Development

After fifty years of residential use, the park determined that the house was no longer suitable for its historic function. The high volume of traffic directly in front of the building and the high cost of heating (up to \$500 per month) were the two major considerations.

Several divisions considered taking the facility for staff offices but none could use the building as it existed and sufficient funds for rehabilitation were not available for the park budget. In addition, there was no adequate space for staff parking in the vicinity. Finally, use as National Park Service offices was discouraged because the property was isolated from other Service facilities.

Having considered these alternatives, the Superintendent approached the president of the Fred Harvey Company. Main offices for the Fred

Harvey Company, which has been operating at Grand Canyon since 1905, were located across the street from the house in highly congested quarters. The company decided that the relocation of executive offices to the house would solve their space needs inexpensively, while allowing their operations to remain close together. Negotiations for the house were concluded with a 15 year, 3 month lease. Under the terms of the agreement, the Service provides exterior maintenance and the concessioner handles interior improvements, subject to National Park Service approval.

Plans and specifications for modifying the building were developed by the park Historical Architect in consultation with the Director of Maintenance/Engineering for the Fred Harvey Company. Numerous meetings were also held with the contractor before and during construction. To assure congruence in review, documents were submitted to the Regional Historical Architect and the Regional Tax Certification Specialist at the same time.

Building Treatment

In order for the house to properly function in its new capacity, four general requirements needed to be met: (a) improve the heating and cooling systems, (b) increase telephone and electrical capacity, (c) eliminate or modify anachronistic features, and (d) apply new finishes. At the same time, original fabric had to be protected; the historic character had to be maintained; and new work had to be distinguishable from the old. Two work elements will illustrate the approach taken to accommodate both sets of concerns.

First, all frame walls were furred out in the interior. Rigid foam boards were installed between the furring strips to improve the energy efficiency of the building. The insulation was held in place by the furring strips and their gypsum board cover. Nailing was minimized. All mouldings and trim were left intact and protected by appropriately located furring strips. Trim on door and windows was extended to properly interface with the new interior wall plane. Where possible, new electrical and telephone service was run through the furred out wall. The new wall surface was textured in a manner similar to, but not identical with, the original plaster.

Another work element focused on the creation of office space. In a number of places, this required that doorways be changed, either by filling them in or by cutting new openings. Where openings were no longer needed, the area was furred over. Trim was left in place and, in a few instances, so were the doors. New openings were finished with trim similar to the original and date stamped. Doors for the new openings came from original doorways that had been covered over. A record of changes in door location was kept and placed in the project file.

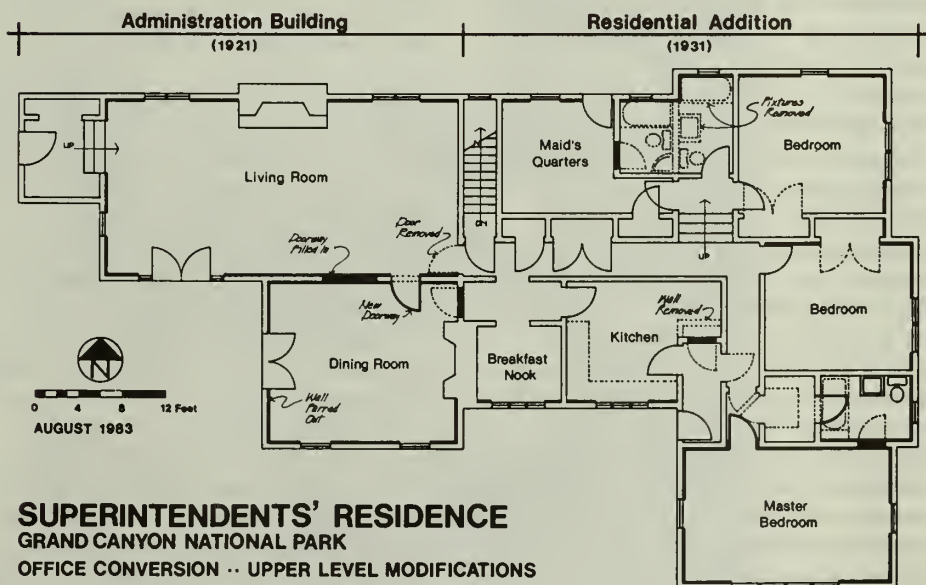
The most complex treatments occurred in the original interpretation room. This space had been reserved for use as a conference room. It called for a level floor and overhead lighting. To protect the grained ceiling, a rough sawn plywood ceiling was constructed between the exposed beams just 2 1/2 inches below the original surface. This provided adequate space for mounting six fluorescent fixtures over the conference table. Power for the lights was run inside chases built over the stone walls and finished with cork to function as pinup boards. The irregular flagstone floor was covered with a plywood platform carefully shimmed to create a solid, level base. The platform was

then carpeted. Like other major changes made to the building, the platform and plywood ceiling were installed in such a way that they could be easily reversed with minimum damage to the original fabric.

Assessment

Application of the conservative approach to building rehabilitation outlined above has resulted in a satisfactory achievement of both park and concession objectives. At no cost to the Service, management objectives for preservation of the property have been met. The building has been protected, and remained in full use, receiving \$69,000 in improvements. Because the project was executed under the provisions of a long term lease, on a National Register property, and in conformance with the Secretary of the Interior's Standards for Historic Preservation Projects, the work qualified for historic preservation tax credits. In addition to those credits, the Fred Harvey Company has secured much needed office space at a cost of only \$19.70 per square foot. Best of all, the building functions well, while retaining the integrity of its historic character. ©

The author is a Historical Architect at the Grand Canyon National Park.



SUPERINTENDENTS' RESIDENCE
GRAND CANYON NATIONAL PARK
OFFICE CONVERSION -- UPPER LEVEL MODIFICATIONS

Remarks by Russell E. Dickenson At The First World Conference On Cultural Parks, Mesa Verde National Park, Colorado, September 16, 1984

Brooke Hindle of the Smithsonian Institution observed that "the scientific revolution, the age of enlightenment, and the revolution of our own time have not eliminated the human need to touch the reality of our past."

I wish to emphasize that if there does not already exist a sense of urgency about our quest, then we should hasten to generate one. For it is apparent that time is growing short, if we are to recover even a portion of what remains in terms of the material and non-material remnants of our cultural heritage.

It is perhaps fortunate that there does not exist a catalog of all that has been lost—historic structures, legends, lifestyles, languages, precious

artifacts with a life all their own—for such an accounting would surely be as damning as it would be tragic.

And to what losses are we silent and unknowing witnesses, even at this moment? What traditions and treasures were sacrificed this very day in conflicts in a dozen places around the world? What was it that vanished under the demands of consumptive societies for ever more wealth and progress and production of material goods? What precious objects were scarred and eroded ever so slightly more this day in acid rain? And what have we allowed to be stolen from us, one and all, by lack of knowledge and complacency?

The cynic might ask: What is the harm if tradition should vanish, or an

artifact be destroyed, or a rock drawing be defaced? Who should care that there is no one left to tell the ancestral stories? Of what consequence is it that the songs and dances are gone?

The fact is that each of us has a stake in the incredible living diversity of the earth we live in. The heritage we share as inhabitants of this planet is a heritage that transcends both time and national boundaries. Because our lives would be much the poorer with their passing.

Because we thrive and prosper by living amidst diversity.

And because we are more and more learning that the cultures of the world must be nurtured, protected and encouraged if we are to maintain a sense of respect for our own, and if we are to learn from each other.

What course, then, are we to pursue if we are to fulfill our responsibility to our past and future cultural heritage? Allow me to suggest some items both practical and philosophical for your consideration.

First, the very concept of the park and its role in preserving significant cultural resources of a region or a nation. We consider the National Park System in the United States to be a richly endowed showcase that celebrates the history and ethnic plurality of America's people. We seek instruction on the past from the ancient settlements of Native Americans at sites such as this, at Mesa Verde, from Cape Krusenstern and the Bering Land Bridge, to the Southeastern Ancients of Ocmulgee National Monument and their Hawaiian Peers at Pu'uhonua O Honaunau National Historical Park. The great sites associated with the American Revolution, the birthplaces of presidents, the communities of early settlers such as Jamestown, the centers of local trade such as Hubbell Trading Post—all places that keep alive the traditions and crafts of our forebears. And let us not forget the belief in religious freedom commemorated by Touro Synagogue and the continuing quest for social justice marked by the Martin Luther King Jr. National Historic Site.

But on a broader scale, let us cherish the worldwide evidence of human creativity—on every continent—whether it is Europe's great historic districts, or Australia's rich sites of Aboriginal life and art, or the Serengeti of the Africa Savanna, the

First World Conference . . .

continued from page 3

their home countries with others of like interests from around the world. Their anticipation for holding these deliberations in an area of great archaeological significance and breathtaking natural beauty heightened expectations that the World Conference would serve as a significant step toward improving international cooperation in preserving the world's most significant cultural resources.

Sixteen resolutions were adopted. Several dealt with the importance of and obligation for recognizing and guaranteeing the survival of native cultures, and the responsibility for incorporating these groups into managing and preserving cultural parks. Others called for improving and promoting high professional standards in preservation work, standardizing techniques and procedures, reducing pollutants that degrade cultural and natural resources, and promoting greater participation in international conventions established to protect and preserve our resources.

The overall conference theme of preservation and use was divided into three sub-themes or topics: technology and preservation, tourism and use, and cultural parks and native cultures. Three sub-theme chairpersons presented summations of the

week's deliberations for their respective sub-themes. The participants voted on resolutions stemming from these three sections of the conference, as well as those introduced from the floor.

Park Service Director Russell E. Dickenson, serving as general chairman, deftly guided the often intense discussions that ensued during deliberations. Jerry L. Rogers, National Park Service Associate Director, Cultural Resources, chaired the technology and preservation sub-theme. The tourism and use sub-theme was handled by Lester Borley, Director of the National Trust for Scotland; and Manuel Esparza, Director of the State Archives, Oaxaca, Mexico, chaired the cultural parks and native cultures sub-theme.

Papers were far ranging, discussions and questions relevant and enlightening, and workshops well attended. Most gratifying to the National Park Service was the decision by the Mesa Verde participants to hold a second international gathering within the next three to four years. And in response to the invitation from Mr. Sime Mestrovic, this second World Conference on Cultural Parks will be held in Yugoslavia.

The author is Management Assistant, Mesa Verde National Park, Colorado. He served previously in Washington as founding editor of the CRM BULLETIN.

continued on page 10



Cliff Palace, showing towers. Seven hundred years ago, the Cliff Palace, largest of Mesa Verde's adobe dwellings housed at least 200 ancestors of present-day Pueblo Indians. Square living quarters and round ceremonial rooms called kivas reveal the lifestyle of 13th century cliff dwellers.

Taj Mahal, or any of the hundreds that could be mentioned.

There are no places on earth quite like some of these remarkable sites. Because there are unlikely to be many additional places of like character, the first moral imperative I would commend to you is the *identification, protection, and perpetuation* of these special places, the sanctuaries for so much of our culture and our heritage. They must survive.

Second, it occurs that we are at a remarkable point in time, a time when it behooves responsible parties to recognize and to act on what I might call an historic juncture of interests.

Modernization often finds the resources of small native communities being absorbed by government agencies and private interest groups. In the process, native peoples relinquish exclusive control over resources that support their lifeways and also contain ancestral sites invested with deep religious meaning. As we know, a peoples' lifeways or cultures depend for survival on intimate relationships with these resources. Often, too, the scientific, preservation and conservation communities prize those same resources for their historic and environmental values.

To further national conservation and preservation goals that affect native resources, then, it seems to me that we must seek innovative forms of rapprochement among native communities, government land managing agencies and groups who share that concern. This clearly would require:

First, recognizing and respecting the unique qualities of native cultures and the directions that native people wish their cultures should take. Developing permanent working partnerships with native communities to effectively incorporate them as allies and partners in planning a future that will significantly affect the lives of their children and their children's children.

Third, it is time for those of us concerned with cultural resources to recognize the value of cultural differences and different cultures in ensuring the growth and development of the world's heritage. The natural sciences have long recognized the role of biological diversity in ensuring the survival of

living forms, and we know that diversity leads to a rich genetic pool from which new life forms develop. It follows, then, that differences in lifeways offer the raw materials to fashion tomorrow's communities with their religious practices, their family arrangements, and their artists and artisans. As cultural resource professionals, we must seek to preserve for today's people and for future generations the lifeways by which ethnic and national groups wish to be distinguished.

Fourth, we must recognize that the concept of culture means much more than simply objects or structures. Material things are the result of a people's lifeways or cultures; that is, historic structures come from a people's way of organizing themselves into family groups. The temples we carefully preserve represent the labor of hundreds of people and the power of a small number of elite who could command that workforce and a belief system that could integrate them all. So our appreciation of objects must necessarily include appreciation for the cultural context that gave them meaning.

Finally, land managers and professionals must acknowledge their roles in a world system that includes native and other localized groups, each of whom depends upon the others to create and protect resources that all value, each in their own way.

Surely we recognize that there are other considerations, other concerns, other interests. The same factors that beset the national parks afflict those where cultural resources are of primary consideration: air and water pollution, noise, urban growth, exotic plants and animals, the problems of increasing visitation, indeed the problems of adequate funding for protection and interpretation.

I trust that some, perhaps all of these issues, will be addressed at this world conference, and certainly at future conferences. And as they are addressed, I trust, too, that we would be reminded once again of the sense of sharing, and of uncommon commitment to great issues of common interest.

For if we have a single home in the planet earth, then we continue to share a single heritage as part of the brotherhood of humankind. And we

can share no higher calling than to join together in seeking to preserve and to protect that which embodies our cultural heritage. ©

ABSTRACTS OF PAPERS —Mesa Verde Conference, September 16 - 21, 1984

Caesarea Maritima, Israel: A National Park and an International Archaeological Monument Under Siege—Robert L. Hohlfelder, Ph.D., University of Colorado

Caesarea Maritima, a seaport and capital city founded by Herod the Great, had a rich millennial history as a crossroads between eastern and western cultures. Its archaeological monuments, particularly those now submerged beneath the Mediterranean Sea, are an important part of the world's cultural heritage. But because of its location between Tel Aviv and Haifa along Israel's rapidly developing coastline, this national park and world archaeological site is under siege by industrial and business activities threatening the integrity of this site. This report, presented by a concerned, foreign archaeologist who co-directs the Caesarea Ancient Harbour Excavation Project with Israeli colleagues, will present the problems, pressures, successes and failures of various agencies to preserve an international cultural resource.

Urban Cultural Interest Parks in Chile
—Mario Correa, Embassy of Chile

The design of cities in Chile generally does not contemplate adequate open space. Public parks and landscaped plazas are scarce. This new concept is based on the idea of urban parks offering a wide variety of cultural activities intending to regain family responsibility for the educational role demanded in cultural affairs. Based, essentially, on the idea of a center for cultural instruction and orientation for children between ages 3-18, attention will focus on instruction, training and development of the senses leading to higher sensibility in ecology, art, music, dance, writing, and other cultural activities related to creativity, self expression and communication.

Participation of Aborigines and Archaeologists in the Management of Aboriginal Cultural Resources in the National Parks of Southeastern Australia—Isabel McBryde, Ph.D., Australia Heritage Commission, and Glen Morris, National Parks and Wildlife Service, Australia

This paper surveys the role of Aboriginal communities and Aboriginal staff officers, and of archaeologists in cultural

resource management applied to Aboriginal sites in southeastern Australia. The main emphasis will be on sites within national parks, but the situation outside these estates will also be considered.

Competing or Complementary Values: Private Property Rights and Cultural Parks—Sandra McCallum, University of Victoria, British Columbia

When national parks were first established in North America, the commonly held view was that public ownership of the title to land was the most effective means of control. Once the park concept expanded to include cultural parks, the effectiveness of public ownership should have been questioned. This paper suggests that one of the hallmarks of property law is the ability to fragment ownership; this allows consideration of covenants, easements and transfer of development rights. The paper suggests that these concepts should be used to protect the values inherent in cultural parks.

Museum Collections in the Park Planning Process—Ann Hitchcock, Chief Curator, National Park Service

Museum objects and specimens, as a resource, are frequently overlooked in the park planning process in most countries. As a result, many park collections have developed on an ad hoc basis. Because of the lack of clearly defined purpose and plans for collections, they are frequently not adequately documented, preserved, managed or interpreted in parks. The planning process in use by the National Park Service will be discussed as it applies to collections management.

The Anthropologist as Advocate for Local Interests in National Park Planning—Benita J. Howell, University of Tennessee

The Master Plan for the Big South Fork National River and Recreation Area, now under construction in Kentucky and Tennessee, elicited mixed reactions from local citizens: support for cultural preservation programs, but skepticism or opposition to proposed recreational uses. These reactions are predictable because planners failed to take into account local citizens' traditional recreational and economic uses of the area. The Big South Fork experience suggests that national park planning should incorporate timely ethnographic research to promote adequate public participation in planning, and to facilitate compromise between local concerns and the national interest served by professional park planners.

Legal and Political Constraints of Tourism and Use—Robert E. Stipe, North Carolina State University

Effective solutions to the problems of tourism and use by the year 2025 must begin with a re-examination of the traditional meanings of such terms as "cultural park," "tourism" and "use." The critical problems will involve coping with tourist-generated and difficult land use problems at the boundaries of existing parks and, for the purpose of providing new park opportunities for an expanding population, developing additional parks on private property on a large scale. Special problems will arise in the areas of intergovernmental relations, the rural/urban political contexts, the continuing reality of widespread rural poverty, a variety of land use planning and economic considerations—each of which carries with it certain legal and constitutional issues.

Cultural Parks: Portraits of the Human Experience—W. James Judge, Ph.D., National Park Service

This paper takes the position that national parks—particularly the cultural parks—are vital components of modern social systems in that they offer us standards against which to measure change. Cultural parks serve as portraits of abandoned lifeways and must be conserved for the future. However, conservation in the absence of thorough, scientific research is inefficient in the long run. Lack of attention to this will be extremely detrimental to the future since we are, after all, dealing with the preservation of experiments which cannot be repeated.

The Place and Protection of Historic and Cultural Resources in Chinese Scenic Areas and Historic Places—Wang Bingluo, People's Republic of China

The famous mountains and historic rivers of China were influenced by long historic processes and contain many historic and cultural traces. In China, the beauty of nature and the beauty of human culture permeate protected scenic areas and historic places. The state protects these resources by selecting designated historic monuments, scenic areas and historic places, and famous historic cultural towns.

Raising the Consciousness of Residents to Their National Heritage—Jesma McFarlane, Ph.D., Trinidad, West Indies.

The tourist industry is one of the main contributors to the economy of several underdeveloped countries. However, the native people of a country are the ones who remain in the community year round. Should tourism, therefore, incorporate the feeling and response of the native people to the development of any resource for such a purpose? ©

NEW ON THE MARKET

"Preservation Briefs: 13 The Repair and Thermal Upgrading of Historic Steel Windows"

"PB 13" by Sharon C. Park, AIA, discusses the development, use and styles of rolled steel windows popular in the first half of the 20th century. The steps for cleaning and repairing damaged steel windows are then explained in some detail and summarized in a 2-page chart. Thermal upgrading is discussed, with illustrations of appropriate methods of weatherstripping and options for storm panels or the installation of thermal glass.

"A Glossary of Historic Masonry Deterioration Problems and Preservation Treatments"

This publication has been developed in conjunction with the Census of Treated Historic Masonry Buildings. As the Census project has evolved, we have realized the need for a standard set of definitions. This illustrated glossary, which consists of 22 deterioration problems and 20 preservation treatments, has been compiled by Anne Grimmer as a general reference and interpretive tool to provide an explanation of all terms likely to be used in the Census.

"Moisture Problems in Historic Masonry Walls: Diagnosis and Treatment"

Written by Baird M. Smith, AIA, this Technical Report discusses problems caused by excessive moisture in historic masonry walls. It also gives a methodology for diagnosing such problems and selected treatments.

"Preservation Briefs: 8 Aluminum and Vinyl Siding on Historic Buildings"

"PB 8" has been revised and updated. The brief discusses the appropriateness of substitute materials for resurfacing historic wood frame buildings. The brief also includes a planning hierarchy for making decisions about the repair and replacement of historic materials.

For further information contact the Preservation Assistance Division, National Park Service, Washington, DC 20240.

continued on page 14

More Historic Structures Feedback!

THE BEST CUT

Performance of wood as a building material is based on many factors—species, density, grain, localized defects, etc. The way lumber is cut—the grain—is, after the selection of species, perhaps the most important factor in wood durability.

Lumber can be cut from a log in two distinct ways: tangent to the annual rings, producing what is called "plainsawed" lumber in hardwoods and "flat-grained" or "slash-grained" lumber in softwoods; and radially to the rings or parallel to the rays, producing "quartersawed" lumber in hardwoods and "edge-grained" or "vertical-grained" lumber in softwoods. Usually quartersawed lumber is not cut strictly parallel with the rays; and often in plainsawed boards, the surface next to the edges are far from tangent to the rings. In commercial practice, lumber with rings at angles of 45 to 90 degrees with the wide surface of the board is called quartersawed and lumber with rings at angles of 0 to 45 degrees with the wide surface of the board is called plainsawed. Both plain and quartersawed provide satisfactory lumber, but each type has its advantages and disadvantages.

A. Quartersawed

Shrinks and swells less in width.

Twists and cups less.

Surface-checks and splits less in seasoning and in use.

Raised grain caused by separation in the annual rings does not become so pronounced.

Wears more evenly.

Types of figure due to pronounced rays, interlocked grain, and wavy grain are brought out more conspicuously.

Does not allow liquids to pass into or through it so readily in some species.

Holds paint better in some species.

Sapwood appearing in boards is at the edges and its width is limited according to the width of sapwood in the log.

B. Plainsawed

Figure patterns resulting from the annual rings and some other types of figure are brought out more conspicuously by plainsawing.

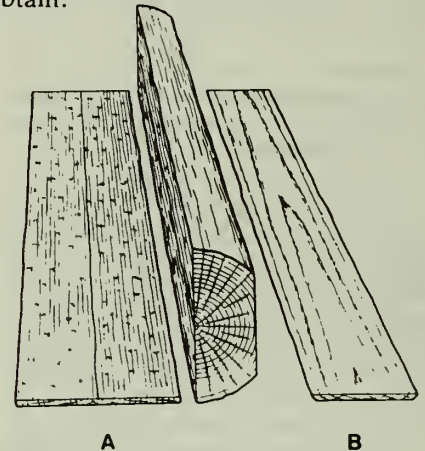
Round or oval knots affect the surface appearance less than spike knots in quartersawed boards. Also, a board with a round or oval knot is stronger than a board with a spike knot.

Shakes and pitch pockets, when present, extend through fewer boards.

Less susceptible to collapse in drying.

Shrinks and swells less in thickness.

May cost less because easier to obtain.



Williamsport Training Center

POULTICES AND GRAFFITI REMOVAL

Graffiti continues to recur and mar monuments, sculpture, and architecture in the National Park Service. Poultices of one formulation or another have always been a conservative and effective method of treating graffiti if the proper solvent is combined with an appropriate absorbent. The importance of matching the solution properties of the graffiti to the proper solvent is well known to anyone with experience in graffiti removal, yet the selection of and formulation of an absorbent material has largely been based on tradition.

This brief note suggests the incorporation of fumed silica (Fumed Silica M-5, Conservation Materials, Ltd., Sparks, Nevada) 5-12% (by weight) into most poultice absorbents to both improve the handling properties of the poultice and increase the rate of evaporation at the surface. Increased evaporation can improve the mechanics of less volatile formulations such as mineral spirits/absorbent. On the other hand, extremely volatile systems such as acetone/absorbent are negatively affected. Try a little experimentation and always use the test

patch approach before making broad application.

The author is currently working on developing a graffiti removal kit for the nondestructive removal of the most commonly recurring types of graffiti.

Gregory S. Byrne
Harpers Ferry Center

An interesting sidelight on this subject concerns the reproduction paper presently in Mr. Lincoln's bedroom. Prepared in the 1950s, it was intended to recreate the appearance of the original. Nevertheless, the historic wallpaper study ascertained that the reproduction inaccurately simulated the faded appearance of the old wallpaper, rather than the bright magentas, creams, and "French" blues that the Lincolns would have known. Furthermore, the reproduction lacks the rich surface texture of the embossed original. On the basis of such findings, the National Park Service plans to replace the reproduction wallpaper presently in the Lincoln Home.

In addition to the historic furnishings and wallpaper, the *Leslie's Illustrated* sketches also illustrate such structural features as doorways, windows, and fireplaces. Unlike the Historic Furnishings Plan and wallpaper study, however, the Historic Architecture Report has not yet been completed. In fact, the Furnishings Plan had to be finished first, in order to specify the location of large pieces of furniture. This, in turn, will help to determine the locations of vents for a proposed climate control system.

The architectural study is evaluating the need for structural strengthening in the floor of Mr. and Mrs. Lincoln's suite of adjoining bedrooms. The goal is to enable the public to pass through this area. Visitors presently look into Mr. Lincoln's bedroom over a barrier and then move through the guest and boys' rooms before they can look into Mrs. Lincoln's bedroom. As a result, they sometimes ask whether these "separate bedrooms" are an indication of marital disharmony. Passing through the suite of rooms will enable visitors to perceive them as adjoining rather than separate bedrooms. This goal necessitates adjustments in the Historic Furnishings Plan to position artifacts so as to provide a corridor for visitor movement.

Another facet of research in the restoration of the Lincoln Home interior is archeology. Artifacts from excavations carried out in the Lincoln Home backyard during the 1950s are undergoing analysis at the National Park Service's Midwest Archeological Center. They may reveal details about the home interior, such as window sash hardware or the types of

ceramics the Lincolns used. In this way, the archeological analysis will shed light on the study of historic architecture and furnishings—another example of the interplay between disciplines which characterizes the restoration of the Lincoln Home interior.

The value of this interdisciplinary project lies in the recreation of the ambience which Lincoln knew in the only home he ever owned. As a result, visitors will be able to experience the environment in which Lincoln lived with his family. Though not as firmly implanted in the popular imagination as his poignant early years or the fiery trials of his Presidency, Spring-

field nevertheless left an indelible impression upon Lincolns' character. During the twenty-five years he lived in the city and the seventeen years he spent in the home, Lincoln emerged from a self-taught lawyer with local political interests into the great statesman the world remembers as America's sixteenth President. In his Farewell Address to the citizens of Springfield, Lincoln declared, "To this place, and the kindness of these people, I owe every thing." ©

The author is a Historian at Lincoln Home National Historic Site.



Photographs of the Lincoln Home taken on August 8, 1860 with Presidential candidate Abraham Lincoln on the front steps of the Home, surrounded by a throng of his supporters.



A view of Mr. Lincoln's Bedroom as visitors see it today.

Forgotten Places and Things; Archaeological Perspectives on American History,

compiled and edited by Albert E. Ward, is available from the Center of Anthropological Studies, P.O. Box 14576, Albuquerque, New Mexico 87191. The selling price is \$24.00, plus \$2.00 postage and handling. The book is a special commemorative volume of the 1980 Albuquerque meeting of the Society for Historical Archaeology, and includes 40 papers covering a range of topics from the role of the historian to new trends in theory and methodology.

Protecting Historic Properties: A Guide to Research and Preservation

contains chapters which address architectural styles, researching old buildings, nominating a resource to the National Register, conducting surveys, forming a historic district and writing local ordinances, using preservation and facade easements, and taking advantage of tax incentives for rehabilitation. For information on how to order, write the Brandywine Conservancy, Environmental Management Center, P.O. Box 141, Chadds Ford, PA 19317 or call (215) 459-1900, ext. 140.

An Ethnography of Santa Clara Pueblo, New Mexico,

W. W. Hill. Edited and Annotated by Charles H. Lange. Albuquerque: University of New Mexico Press. 1982

The book covers topics like property, ownership, inheritance, agricultural economy, food preparation, and diet. It includes data on hunting and trading, material culture, life cycle, and social and political organization. A final chapter of 150 pages is devoted to ceremonial organization, which is probably the most important part of the book. It reflects Hill's skill as field-worker in a community traditionally secretive about religious matters, and the trust in which he was held by his Santa Clara informants, many of whom are now dead and were able to furnish information wholly unknown to the present generation. Although it is true of every ethnographic study that it could not be repeated, it is particularly true in this case, as Santa Clara has undergone tremendous changes in recent decades.

(excerpted from AMERICAN ANTHROPOLOGIST, Vol. 86, No. 2) ©

Robert Z. Melnick, A.S.L.A., with Daniel Spohn and Emma Jane Saxe, *Cultural Landscapes: Rural Historic Districts in the National Park System*, Washington, D.C.: U.S. Government Printing Office, 1984, 80 pp., 29 figures.

Review by:

Steven Elkinton, Landscape Architect, Cuyahoga Valley National Recreation Area, Ohio.

There are places in this country that we look at every day, but that we never really see. They are landscapes of heritage; places that seem so natural that they often go unrecognized, misunderstood, unprotected, and mismanaged. The purpose of this technical manual is to provide a distinct framework within which decisions can be made about these places. The ultimate goal of this manual is the protection, wise stewardship, and appropriate management of significant rural landscapes within the National Park System (Page 1).

As the National Park System grew during the 1960s and 1970s, rural lands which did not fit easily into any definable management category came under Federal management. Caught between the architectural orientation of historic preservationists and the wilderness perspective of national resource managers, these fragments of rural America were usually neglected. Although considered low priority in significance, they often formed essential backdrops to historical sites and recreation areas. The NPS organic act and subsequent policies set the stage, but managers had no clear instructions about managing such areas. Melnick's *Cultural Landscapes* provides the long-awaited bridge between policy intent and the management tool needed to preserve these historic places.

Written for park managers, this short, well-organized handbook keeps aesthetic languages to a minimum. The inclusive philosophical perspective is appropriate, resting solidly on an ecological perspective, rather than on regional or stylistic factors. The bibliography provides a comprehensive view of this new and nebulous field. Best of all, a whole set of terms, such as "continuity" and "scenic value" are clearly defined. The book's major weakness (although not distracting) is a choppiness caused by the different styles and perspectives of the several authors. Because these guidelines are new and untried, examples tend to be generic rather than specific.

The core of this book presents an evaluation technique for preparing National Register district nominations. Such nominations are difficult and often complex—these guidelines present a step-by-step approach with clearly defined criteria and standards.

Although written for NPS managers, *Cultural Landscapes* could easily be adapted by local governments, regional park authorities, and others responsible for protecting rural America. The section "How to Identify Rural Historic Districts" supplies a new and refreshing set of glasses for observing the character of mundane and vernacular landscapes, while the section on management options lays out a broad pallet of tools. These range from various types of government ownership to cooperative agreements and educational programs. The key to each step is to identify that which makes a particular district unique and precious and then to manage it appropriately. More discussion would be helpful concerning contemporary land uses that are economically viable while still perpetuating the historic integrity of a particular place.

continued on page 15



SIX BIG ISSUES

The start of the new year marks another milestone for the CRM BULLETIN. You can expect six issues to arrive annually rather than the usual four. In 1985, the BULLETIN will become a bimonthly publication. Listed below is the new schedule for submitting articles.

Deadline	Issue
December 1	February
February 1	April
April 1	June

June 1
August 1
October 1

August
October
December

I hope you will find the next six issues useful. Please submit all articles by the appropriate deadline. Address correspondence to:

Editor
CRM BULLETIN
National Park Service
18th & C Sts., NW
Washington, D.C. 20240

However, the project has been delayed due to design problems. Plans include the creation of under-the-ground-surface viewing areas through which visitors can see the original brick driveway, out-building foundations, and the lower part of the cast iron fence.

Aston Villa is only six feet above the sea level. The climate is subtropical, with torrential rains. With these circumstances in mind, Judy Scheibel, Director of the museum, would appreciate any information on Park Service properties which have solved similar exhibit problems. She may be reached at P.O. Box 1616, 2328 Broadway, Galveston, Texas 77553, or phone (409) 762-3933.

Book Review . . .

continued from page 14

In historic areas questions always arise concerning the historic period which should be recreated. Unlike a building, a landscape is a living system which cannot easily be returned to a former condition without high cost and disturbance (as at Williamsburg). The approach taken here is to "evoke", not re-create, the character of a desired period. Such a period can span a century or even the entire evolution of settlement in a particular place.

The perspective on the rural world around us outlines in *Cultural Landscapes* should help many to appreciate what before they considered mundane. The beauty of rural America is a treasure which can now be protected.

This country is rich in both natural and cultural splendor. We, as a people, are familiar with the arguments concerning natural resources conservation, as well as the need to preserve significant historic architecture. However, we are less inclined to recognize the value from a cultural perspective of the landscapes which we see around us. Rural cultural landscapes can appropriately serve as both a model and a study area for understanding that blend of natural and cultural splendor (Page 10). ©

INNOVATIONS IN LEATHER

The Leather Conservation course was held at Harpers Ferry Center from June 25-30, and included representatives from 20 institutions in Canada and the U.S. The course developed better understanding of historic leather and its needs since this area of conservation has not kept pace with advancements of other decorative arts. Also joining the course were Peter Hallebeek (Conservation Scientist, Central Research Laboratory, Amsterdam), Betty Haines (Industry Scientist, British Leather Manufacturers Research Association), and Leather Conservation Course Guide, Henk van Soest (Chief Restorer, Central Research Laboratory, Amsterdam).

REQUEST FROM THE DIRECTOR OF ASHTON VILLA

During the nineteenth century, Ashton Villa, home of Galveston's J. M. Brown and his elegant daughter "Miss Bettie," hosted exotic parties and housed witty guests. By the 1920s, however, the home was boarded up. The Galveston Historical Society interceded in 1973, transforming the site into a house museum.

Part of the landscape plan for Ashton Villa includes archeological exhibits.

REVISION TO MUSEUM HANDBOOK

Now that the *Museum Handbook, Part II—Museum Records* is completed, the Curatorial Services Branch is turning to the work of revising the other parts of the Handbook. On September 24, 1984, a new NPS Museum Handbook Steering Committee was established to work with the Curatorial Services Branch, advising and monitoring a Servicewide effort to revise and update Part I of the Handbook. The members of this committee include: Tom Carter, Conservator, Division of Conservation; John Conts, Chief, Anthropological and Library Collections, Western Archeological and Conservation Center; Bill Gregg, Coordinator, Man and Biosphere Program, Washington Office; John Hunter, Regional Curator, Midwest Region; Lynne Leopold-Sharpe, Curator of Minute Man National Historic Park; and Ellen Seeley, Curator of Glacier National Park. Chief Curator Ann Hitchcock, and Staff Curator Tony Knapp, will serve as ex-officio members. The first meeting of the new Steering Committee was held in Washington, D.C., on September 27 and 28, 1984. At this meeting, the Committee drafted a content outline and an action plan for completing the revision of Part I of the Handbook. Present plans call for completing and issuing Part I in 1986. ©

Calendar of Events

January 8, 1985

"Serving the Preservation of a Collection without a Staff Conservator." Contact: Bay Area Art Conservation Guild c/o Daedalus, 6020 Adeline St., Oakland, CA 94608 or call Robin Tichane, Program Chair, (415) 648-2388.

January 28-29

"Seismic Retrofit of Existing Unreinforced Masonry Building" Conference. Contact: Lt. Col. Charles Lindberg, Department of Civil Engineering, Citadel University, Military College of South Carolina, Charleston, SC 29409, (803) 792-5083.

February 7

"Deterioration and Preservation of Architectural Terra Cotta" Seminar. Contact: Friends of Terra Cotta, P.O. Box 421393, Main Post Office, San Francisco, CA 94142.

February 12

"Handbookbinding and Library Conservation." Contact: Bay Area Art Conservation Guild, c/o Daedalus 6020 Adeline St., Oakland, CA 94608.

February 25-March 1

Historians Workshop, Harpers Ferry Center. Contact: Ed Bearss, National Park Service, 1100 L St., NW, Washington, DC 20005 (202) 343-8163.

February 25-March 1

Cultural Resources Planning and Evaluation Methods, Mather Training Center. Contact: Michael D. Watson, National Park Service, P.O. Box 77, Harpers Ferry, WV 25425 (304) 525-6371, ext. 6405.

April 17-21

Organization of American Historians, Minneapolis, MN.

April 29-May 1

Archeology Workshop: Predictive Modeling, Fort Collins, CO. Contact: Vic Carbone, National Park Service, 1100 L St., NW, Washington, DC 20005 (202) 343-4105; Frank McManamon, North Atlantic Regional Office, National Park Service, 15 State Street, Boston, MA 02109 (617) 223-2778.

May 12-18

National Preservation Week



December 1984

Published quarterly by the Associate Director, Cultural Resources, in the interest of promoting and maintaining high standards in the management of those cultural resources entrusted to the National Park Service's care by the American people.

Director: Russell E. Dickenson

Editor: Mary V. Maruca

Assistant Editor: Karlota M. Koester

Graphic Design: Northlight Graphics

Cultural Resources, Washington, D.C.

IN THIS ISSUE. . .

Presenting The Truth1
Restoring The
Lincoln Home Interior1
First World Conference
on Cultural Parks3

Adaptive Use:6
Abstracts of Papers10
New on the Market11
Feed Back12
Book Review14
Announcements15
Calendar of Events16

Cultural Resources
National Park Service
U.S. Department of Interior
Washington, D.C. 20240

First-Class Mail
Postage & Fees Paid
U.S. Department of the Interior
G-83